

# the muezzin

University of Tampa

Winter, 1972





# Great moments to come

## Music

- Feb. 26** Pre-College Music Program, trumpet clinic, spons. by U. of T. Music Dept., open to public free, Plant Hall, Ballroom, 1 p.m.-4.
- Feb. 27** Fourth Annual Festival of Band Music, U. of T. Bands, open to public free, Falk Theatre, 8 p.m.
- March 9** The Hoffman String Quartet, spons. by U. of T. Music Dept., open to public, series ticket: \$10, individual concert ticket: \$4.50, Plant Hall, Fletcher Lounge, 8:15 p.m.
- March 18** Jazz Festival Concert, area bands and U. of T. stage bands, spons. by U. of T. Music Dept., open to public free, Falk Theatre, 1 p.m.-9.
- April 14** Junior Recital Bruce Dinkins, clarinet, spons. by U. of T. Music Dept., open to public free, Plant Hall, Ballroom, 8 p.m.
- April 21** Faculty Artist Series all Chopin concert, Leslie Jones, pianist, spons. by U. of T. Music Dept., open to public free, Plant Hall, Ballroom, 8 p.m.

## Special Events

- Feb. 21** Poetry recital, Dr. J. Duane Locke, open to public free, U.U., Rm. 3, 9 p.m.-10.
- Feb. 24** Panel discussion, with War College current affairs team, open to public free, U.U., Rm. 3, 5 p.m.-10.
- March 4-11** Anniversary Week, in celebration of opening of University Union, spons. by U.U. Program Council.
- March 8** U. of T. Woman's Club, theatre party and post play reception, Falk Theatre, 8 p.m.
- March 16** Convocation: Rap session, with former President of Peru, The Right Honorable Fernando De Launde-Terry, open to public free, Falk Theatre, 11 a.m.
- March 16** Reception, honoring De Launde-Terry, spons. by U. of T. Spanish Club, students/faculty/guests, Plant Hall, Fletcher Lounge, 3 p.m.
- March 20** U. of T. Athletic Scholarship Day, Florida Downs, parking fee, 50¢. Luncheon, Dutch Treat, Sky Terrace Dining Room, precedes event, minimum charge of \$2.50 may be utilized for food or beverage. For reservations and info, Ext. 272. Post time: 1:15 p.m.
- March 20** British Debate Team: Oxford University versus University of Glasgow, spons. by U. of T. Speech Department, open to public free, Falk Theatre, 8:30 p.m.
- March 21** Asolo State Theatre Trip, "Hay Fever," Noel Coward, spons. by The Chiselers, Inc., University family welcome to attend. Tickets include Greyhound bus transportation, box lunch and admission to theatre: \$10. Parking available at Florida State Fairgrounds. Reservations and info, Mrs. William E. Davis, 872-0029. Boarding time at fairgrounds, 12 noon.
- March 23** U. of T. Woman's Club, hobby show and meeting, Plant Hall, Ballroom, 8 p.m.
- March 29** THIEVES MARKET, spons. by The Chiselers, Inc., Plant Hall, Ballroom, Dome Room, Lobby, West Veranda, 10 a.m.-3 p.m.
- April 8** U. of T. Woman's Club, annual picnic, time and place to be announced.
- April 20** U. of T. Woman's Club, "Vacationing in the U.S.A.," presented by Dr. and Mrs. Francis Thompson, U.U., Rm. 3, 8 p.m.

## Radio-TV\*

- Series:** "History in the Making," Dr. Stephen L. Speronis, WFLA-TV, Channel 8, 7 a.m.
- Series:** "The University of Tampa Hour," under the direction of Mr. Al Gale, WSOL Radio, 10:45 a.m.-11:45.
- Series:** "Youth Speaks Out," U. of T. students, interviewer: Mr. Frank Hutchins, WSUN Radio, 11:35 a.m.-11:40.
- Sundays:** "The World Today," Dr. Willis J. Dunn, WLCY-TV, Channel 10, 12:30 p.m.-1.
- Series:** "Perspective," Dr. Carlos Weiman, WFLA-TV, Channel 8, 1:30 p.m.
- Series:** "Campus Point of View," moderated by Mel Berman in cooperation with the U. of T. Office of Public Information, WDAE Radio, 7 p.m.-8.
- Feb. 20** U. of T. Jazz Lab Band, under the direction of Professor Richard W. Rodean, WUSF Radio, Stereo, 89.7, 2 p.m.
- \*Subject to change without notice.

## Theatre

- Feb. 17** Ayako, Kabuki dancer, recital, open to public free, Falk Theatre, 1 p.m.
- Feb. 18** Ayako, Kabuki dancer slide and lecture program, "Theatre Arts of Japan," open to public free, Falk Theatre, 1 p.m.
- March 8-11** "Julius Caesar," U. of T. Drama Dept., U. of T. students/faculty/staff: I.D. cards, general admission: \$2, students \$1, for reservations: 253-3726, Falk Theatre, 8:30 p.m.



# the muezzin

University of Tampa Magazine

## Vol. 42 No. 1

The "Muezzin" is published six times a year by the University of Tampa, 401 West Kennedy Boulevard, Tampa, Florida 33606, with one issue in November, one in January, one in February, one in May one in July and one in August. Second class postage paid at Tampa, Florida.

Notice of address change should be directed to the University of Tampa Alumni Office, Room 344, Plant Hall. When requesting an address change, please enclose the old address label or print your old address exactly as it appeared on the label.

Our name "The Muezzin" originated in the religion of Islam founded by the prophet Mohammed in the early centuries after Christ and practiced primarily in middle eastern countries. The muezzin is the official who proclaims the azan (call to public worship) to which the Muslims respond with set phrases. The summoning is performed by the voice of the muezzin as he stands at the door or at the side of a small mosque (temple) or in the minaret of a large one. Today the muezzin still sounds the call to worship, but in some modernized mosques his voice is placed upon electronic recordings which are amplified to echo the azan throughout the countryside. The University of Tampa "Muezzin" publication performs a similar function in that it broadcasts the call for higher education among its readers. The name was inspired by Plant Hall's 13 Moorish style minarets, gleaming above trees and buildings as a landmark of learning in the heart of the city of Tampa.

## Staff

Editor, Doris Anne Brockway

Alumni Editor, Kenneth P. Hance

Assistant Editor, Janice Staley

## Contents

### Features

- 5 First the Nation, Then the World
- 8 Land for a New Mark
- 10 Inner Spectacle

### Departments

- 2 View from a Minaret
- 6 Editorial
- 7 Sports Page
- Alumni Section — Center

## About the Cover

The showy minarets, now lighted at night, focus the University of Tampa as a landmark of learning. Acquisition of the fairgrounds, announced in this issue, is expected to extend the landmark to heights yet undreamed.



Frank Hutchins





# View From a Minaret

## Tribune Exec on UT Board

J. Stewart Bryan, III, executive vice president of the Tampa Tribune Company, was elected to the University of Tampa Board of Trustees during the Board's fall annual meeting on campus.

Bryan, who moves from the UT Board of Fellows to the policy-making Board of Trustees, is president of the Citizens Safety Council, past president of Tampa Bay Art Center and a member of Ye Mystic Krewe of Gasparilla.

A former resident of Richmond, Va., he has been active in community affairs since moving to Tampa to join the Tribune Company. His father D. Tennant Bryan is chairman of Media General, the parent company of the Tribune.

The younger Bryan assumes the UT trustee position vacated by J. C. Council, chairman of the Tampa Tribune editorial board. Council will continue as a UT fellow.

The Board of Trustees is comprised of 33 business and professional leaders in the community. There are 32 members of the Board of Fellows and six trustees emeritus.

Elected to chair the University Counselors, a sub-group of the Board of Trustees, was J. Thomas Touchton, stockbroker with Riter, Pyne, Kendall and Hollister. Named during the Counselors' annual meeting in November Touchton succeeds Lee M. Bentley, president of Second National Bank in Tampa.

Touchton is past president of St. Joseph Hospital Development Council and a member of Ye Mystic Krewe of Gasparilla.

Other new Counselor officers are G. Pierce Wood, vice president, Tampa Electric Company, vice chairman, and Troy Brown, executive vice president and secretary, Raybro Electric Supplies, Inc., secretary.

Sixty-two young business and industrial leaders comprise the Counselors, who work in the interest of the University, directing the Forward Fund and the Honors Banquet.

## Twenty-one with Honors

One hundred and seventy-two students received degrees at mid-year commencement exercises, the first for Dr. B. D. Owens since becoming president last June. Speaker was Dr. Frank G. Dickey, executive

director of the National Accrediting Commission.

Outstanding among University of Tampa graduates was Army Capt. Norman Belson, Belmar, N. J., who was graduated magna cum laude with a 3.803 average out of a possible 4.0. Married and the father of two, the business administration major has been assigned to the ROTC program at Georgia Military College, Milledgeville.

Twenty-one students were graduated with special senior honors for attaining straight A's during their senior year. Eighteen of them were Bootstrap (military degree completion program) or MacDill Center students.

## Mrs. King Is Chief

Mrs. Karl King, former University of Tampa dean of women, was honored by the Champions of Higher Independent Education in Florida at a dinner given by the organization at Disney World last month. Mrs. King received the C.H.I.E.F. Award for her outstanding contributions to independent higher education.

## Four Make Marks

Three University of Tampa administrators and one faculty member have been recognized for outstanding efforts in their fields by being asked to assume leadership roles in community activities at regional and national levels.

Robert B. Gronlund, vice-president for development and public relations, has been elected vice-president and president-elect of the Central-North Florida Chapter of the Public Relations Society of America, Inc.

Edmund P. Sliz, vice president for business affairs, accepted a bid to serve on the subcommittee on finance, dues and budget for the steering committee of the College and Business Officers meeting in Memphis last month. The subcommittee is one of five named by the steering committee for a program of self study aimed at reevaluation through periodic review of the financial status of member institutions.

Because his outstanding leadership in establishing the University of Tampa band as one of the South's finest, Richard Rodean, Music Department chairman, was chosen to serve as music director for the Fourth Annual American Bowl game, televised nationwide from Tampa stadium last month.



Paul Sawyer was one of two college student financial aid officers from Florida to serve on a Department of Health, Education and Welfare regional panel at a year-end conference in Atlanta. The panel reviewed applications for student financial aid grants from institutions throughout the South.

## Admissions Combination

To streamline coordination between Admissions and Registrar's offices in a long-range admissions development effort the two offices have been combined as the office of Admissions and Records.

Heading the new admissions complex is Eugene H. Cropsey, who has been registrar since 1967.

President Owens said the move will facilitate coordination of admissions, enrollment and attrition studies and will eliminate duplication in record keeping.

Preparation of input for data processing will be upgraded as will follow-up procedures and controls for high school transcripts.

The consolidation will mean more responsibility for key personnel of the two offices. Also, it will permit a savings of space in combining filing systems and office equipment and supplies.

Cropsey has been active in modernizing registration and record-keeping procedures since becoming registrar. One of his major accomplishments was a computer program for evaluation of transfer credits. Future plans call for programming a computer to determine eligibility for graduation and use of on-line terminals to facilitate computer registration. Cropsey plans eventually to computerize all student records.

## Admissions Innovation

An unprecedented plan for immediate person-to-person interchange with high school counselors in key geographic areas sparks President Owens' priority effort to boost student recruiting results.

For four days this month the University will have as guests a group of counselors from outstanding mid-western schools, chosen because their location in the nation's heartland keeps them in constant touch with changing college admissions concepts across the country.

The program is financed through a grant from Tampa Alpha Chapter of the University's National Alumni Association. The only expense to the counselors will be a \$35 registration fee and the cost

of certain meals not furnished by the University.

The meeting will acquaint counselors with the University's facilities, programs and future plans and will provide opportunity for exchange of ideas of benefit to both the University and the counselors. Emphasis will be placed on admissions procedures, high school visits by admissions representatives, unique curricular developments and changes in high school grading systems.

UT President B. D. Owens stated, "Through interaction with high school counselors from other parts of the nation and members of our University community these panels hopefully will produce innovative ideas which will assist each of us as we attempt to meet the constantly changing mission of our organizations and the ever-increasing challenges of higher education."



Members of the Delo Dormitory Association of the University of Tampa hope to double the educational value of the printed page through recycling. Out to build a \$500 scholarship through collection and sale of discarded newspapers and magazines, the boys have averaged a ton a week over a five-week period and are well on their way toward reaching their goal by May when scholarships are awarded.





The 75-member Polish Heritage Foundation dedicated its newly-completed contribution to Western Civilization Corridor in Plant Hall last month. Cued to the Polish national colors, the basic theme of the ethnic classroom is red and white with touches of black. The Foundation, led by Mrs. Frank Filewicz, president, with members residing throughout Florida, initiated the project in 1969.

## Coups for Music and Health

Sharp rise in national stature for two University of Tampa departments — Music and Health — is evidenced by recognition from two of the nation's leading education associations.

The music program was accredited by the National Association of Schools of Music during NASM's 47th annual convention at year end in Boston.

UT, accepted for associate membership, joins 50 other institutions with newly accredited status.

Richard Rodean, chairman of the UT Music Department, explained that this newest academic credential which had been sought for two years, is in line with the expanded role UT has in cultural affairs assumed under the leadership of President B. D. Owens.

Following a five-year period as an associate fully accredited by NASM, qualifications are re-evaluated before full membership can be attained. The 278 full members represent virtually every major university and music school in the nation.

In addition to the University of Tampa, other Florida institutions accredited by NASM are Florida State, Jacksonville and Stetson Universities, the Universities of Florida and Miami and Rollins College.

Membership in the American College Health Association, representing colleges and universi-

ties across the nation, has been granted to the University of Tampa.

Mrs. Bernice Morris, UT director of student health, explained that information now will be available on all pending legislation applicable to the subject.

The American College Health Association also serves as a clearing house for exchange of ideas on matters such as mental health, environmental health and safety, nursing services, clinical and athletic medicines, dental health, administration and development.

## Forward Fund Out Front

For the third year in a row the University of Tampa has surpassed its Forward Fund goal.

Robert B. Gronlund, vice president for development and public relations, said the \$402,435 total "establishes a new record for Forward Fund." As significant is the increase in annual giving donors from 1,201 in 1970 to 1,305.

In going over the top the previous two years Forward Fund raised \$355,500 in 1969 and \$376,737 in 1970.

"Surpassing the goal was a tribute to UT Chancellor David M. Delo for whom the 1971 campaign was dedicated," Edward Snee, director of annual giving and coordinator of the program, reported. Dr. Delo served 13 years as president of the University.

Forward Fund is an annual current operating fund drive initiated in 1964 by then President Delo. First chairman was Loper Lowry, Tampa insurance executive and a member of the UT Board of Trustees since 1963.

Lee M. Bentley, president of the Second National Bank and general chairman of Forward Fund '71, cited the 28 per cent increase in the Community Division — from \$193,917 to \$244,268.

"I feel the increase in Community Division funds from \$144,245 in 1969 to \$244,268 in 1971 is significant because it demonstrates the faith the general business community has in the University of Tampa," Bentley said. "Certainly we feel the University of Tampa is a great asset to the community as a whole, and I sincerely hope support for the Forward Fund will multiply in the years ahead."

Significant also is the 30 per cent increase in campus support for the Forward Fund. The University of Tampa family contributed \$4,524 — \$1,068 over the previous year. Alumni contributions increased by \$4,000 to \$26,265.

In addition to the annual Forward Fund, which is conducted on a calendar year basis, the University also solicits gifts for capital and endowment purposes. Total gifts for all three purposes, which are reported on a fiscal year basis (July 1 to June 30), totaled just under \$3,000,000 for the past three fiscal years.





With establishment of a repertory company Vince Petti's educational theatre concepts advance rapidly.

## FIRST THE NATION, THEN THE WORLD

Falk Theatre Director Vincent Petti believes the United States can become an example of cultural education for other nations to follow. He and his students are helping it happen.

The longer you talk with Petti the more realistic his ambition seems. The key is in development of a new kind of campus repertory theatre geared to the cultural education of community youth as well as University drama students.

The new UT company, first repertory theatre in the Tampa area, is traditional in that a select group of actors prepares a collection of plays and performs them on a continuing basis with both personnel and materials being added or withdrawn as necessity dictates. It departs from the norm in its expanded educational concepts.

Besides the usual practice of holding general public performances to elicit support for the drama department while giving actors and stage crew a proving ground, the educational theatre offers total learning experiences designed especially for community youngsters at token admission charges. "If I had my way admission would be free," Petti says. His hope is to stimulate enough enthusiasm among patrons of the arts to fund the entire program.

Success of the repertory theatre as an important teaching device depends on the manner of presentation and the number of students reached. Designed for the youthful audience with materials ranging from pre-school to college levels, the programs stress the classics presented with innovative flair.

This season "Little Red Riding Hood" will be performed oriental style with thought-provoking asides from a philosophic narrator. On the same program nursery rhymes will be illustrated by live actors and puppet figures in black light. Characterizations often depart from the original straightforward version to give the audience a view beyond the obvious. In one scenario of this season's children's program the occupational hazards of being a witch are revealed.

To complete the learning experience and en-

courage total interchange between performers and audience a question-answer session is conducted following each youth performance.

In the beginning responsibility for extending the influence of Petti's educational theatre across the land will lie mainly with student participants. The 10-member company is comprised of serious drama students from all parts of the country, several of whom will be graduated each year and return to their home towns, hopefully, to establish similar programs.

Petti plans to expand the Tampa program by touring some of the shows, first in Florida towns and eventually outside the state. One of his priority projects is the acquisition of two portable television cameras for videotaping the shows for Florida schools with closed circuit TV facilities. Also, the tapes could be transferred to film for schools which have only motion picture projectors.

The repertory theatre is an expansion and refinement of Petti's Theatre Enrichment Program under which a roster of four or five drama department productions per season have included special youth matinees in addition to evening performances for the general audience.

In the new program any play in the company's repertory may be rescheduled at any time, and most performances will be staged especially for the youth audience, complete with question-answer period. General audience performances will continue but only productions with greatest adult appeal will be offered for the general public.

The most outstanding advantages of the repertory theatre over the usual short-run drama productions the larger audience that can be reached through repetitive scheduling of the same production and the ability to offer a larger number of plays per season with a ready-made cast continuously rehearsing one or more plays.

**By Doris Anne Brockway**



The first repertory production, "Classic Story Theatre," for elementary school children is slated to run the entire month of February with Saturday matinees at 10:30 a.m. and Sundays at 2 p.m.

In March "Big Julie," a spoof on "Julius Caesar," will be run during matinees. The script, written by Petti, is a musical comedy. While "Big Julie" is being presented in matinees, Falk Theatre will be staging "Julius Caesar" on weekends at night with well-known actors from the community in leading roles, supported by repertory theatre students.

Endorsing the repertory company's efforts UT President Owens stated, "A repertory theatre has been needed here for a long time. It will enhance the cultural status of the community and help the University of Tampa fulfill its commitment to the area."

Goals for Petti and the new theatre include the following:

A company of at least 20 actors, two designers, 10 technical people, two directors and a playwright in residence;

A bachelor of fine arts degree in drama, permitting University of Tampa students to earn from 15 to 30 hours;

Construction of a repertory theatre building along the Hillsborough River on the University campus with living accommodations for actors, designers and directors;

Expansion of operations to 10 months of the year with matinee and evening performances;

A touring company that will first cover Florida and eventually the entire United States.

Steps already have been taken toward the more readily accessible goals. "Plans are in the works for a BFA degree in drama, and I have been in correspondence with some graduate students at the Yale School of Drama who are interested in coming down to work with us," Petti reported. "This could mean some artists-in-residence."

"The emphasis always will be on education," Petti said. "We want our young people to develop educational and cultural standards. Right now the young people's entertainment standards have been shaped by television. If we want to have culture we must sell it, just as we do football and other sports. America has a great abundance of talent. This talent must have an avenue of expression to help establish the United States as a cultural contributor to the world."

## Editorial

# A Vested Interest

Everybody wants approval. It's human nature. But more than that we need recognition, even if it is not always flattering. It is more satisfying to be acknowledged through constructive criticism than to be lost in a shuffle of indifference.

The Muezzin has a new look — or haven't you noticed. The most obvious change is the new Alumni section — eight full pages of alumni news, printed on colored stock coordinated with our cover color and tucked neatly into the center of the book for our alumni readers' easy access.

The remainder of the magazine has adopted a general campus format with news and sports columns and features positioned in logical sequence. Our type face is new to match the Gothic simplicity of the University logo, and our masthead has been altered slightly, dropping the year date, to give it a timeless quality and to make it usable on other publications which also will bear the name Muezzin

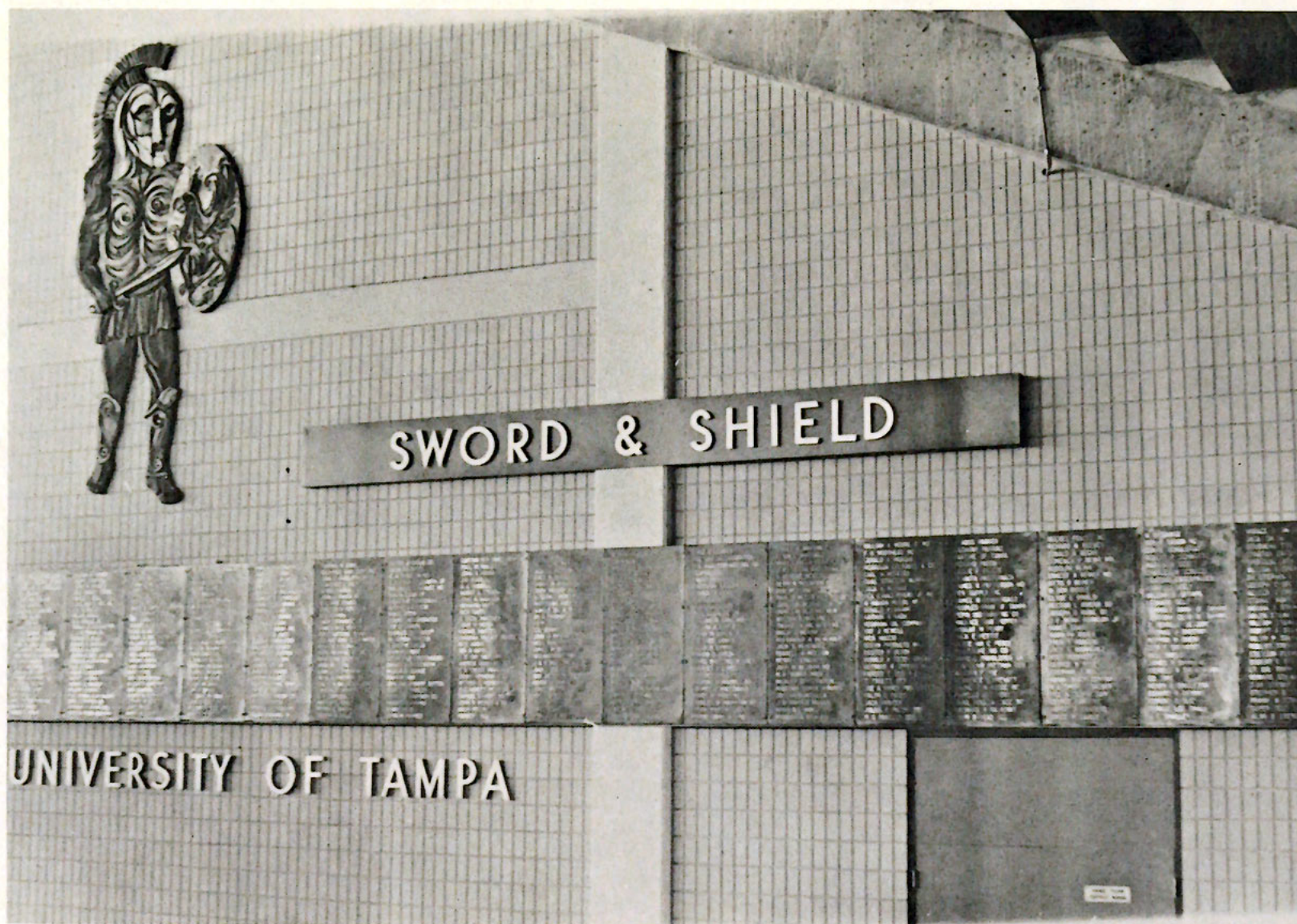
for mailing purposes.

Other changes cannot be perceived by just looking. You have to read us to see them. We are in the process of sharpening our insight into campus affairs, sifting out the most succulent tidbits of campus news, views and sports and presenting them to you in a tighter, more readable writing style. Upgrading our content is an even greater challenge than streamlining our appearance. In any self improvement program the look can change dramatically overnight, but developing personality, character and maturity takes time. We are working at it.

Among the most essential factors to self improvement is feedback from the audience. After all, they are the ones we aim to please. Let us hear from you. What do you like — what don't you like about us? How can we bring you more of what you want to see? If one of our stories provokes a thought about any issue at all we would like to know about it. With your response we might start a "Letters to the Editor" column and make your voice heard among all with a vested interest in the University of Tampa.



# Alumni Movement



Sword and Shield members who long have supported University of Tampa athletics in time, enthusiasm and dollars have been immortalized in bronze with their names on a mammoth plaque at Tampa Stadium. Commanding the attention of all who view the plaque is a giant ceramic sculpture of the Spartan Warrior, designed and constructed by UT art instructor Harold Nosti together with Tampa architect George Tebrugge.

## Beach-Keene, Leadership Combination

Perry O. Keene, Jr., '51, Tampa, vice-president of Tropical Garment Manufacturing Company, was named president-elect of the University of Tampa National Alumni Association at the annual meeting of the Alumni Council during Homecoming Week in November.

Installed as this year's president was Pinellas Circuit Judge Robert Beach, '55. Dr. G. Truman Hunter, '39, immediate past president of the Association, became vice-president.

Mrs. Doris (Mays) Morgan, '55, Tampa, a member of the Council, was elected secretary-treasurer of the Association at the same meeting.

## New Distinction for Senator Thomas

State Senate President Jerry Thomas became an honorary alumnus of the University of Tampa during a reception for state senators, December 13, in Fletcher Lounge.

UT President B. D. Owens staged the affair, assisted by alumnus Jim Ghiotto, '50, to give state legislators increased insight into the programs and plans of the University.





## Homecoming Flashbacks

Highlighting the 36th University of Tampa Homecoming, November 13, Dr. Walter Lane, '61, Temple Terrace physician, was named "alumnus of the year" by the National Alumni Association. The honor was bestowed at the annual Alumni Association buffet in the Aloha Room of Hawaiian Village Motel. Congratulating Dr. Lane (photo at upper right) is Ken Hance (left), director of Alumni Relations, while Perry O. Keene, Jr., '51, vice-president of Tropical Garment Manufacturing and president-elect of the Alumni Association, looks on. Other award winners honored during the buffet were professors: (l-r photo at lower right) Dr. J. Duane Locke, associate professor of English, outstanding achievement by a faculty member with more than five years of service, and Dr. Stanton G. Truxillo, acting chairman of the Physics Department, outstanding achievement by a faculty member with less than five years of service. Recognized during the buffet for his 13 years of dedicated leadership as president of the University, Chancellor David M. DeLo (above left) received a plaque containing words of a resolution passed by the Association naming him the University's first honorary alumnus.







Holding the bowl and red roses symbolic of her coronation, 1971 Homecoming Queen Lois Hamann (seated), Jericho, L.I., smiles upon her subjects. Members of the Homecoming court (l-r) are Maureen Starrt, Sierra Vista, Ariz.; Laura Wood, Lynne Carr, Chula Vista, Calif.; Sandy O'Shea, New York, N.Y., and Leni Waggoner. The coronation was held November 12 immediately following the "Spartan Spoofs" at Falk Theatre.

## FROM THE CHAPTERS

### Tampa Alpha

James Metcalf, '56, was named president of Tampa Alpha during the chapter's annual election of officers dinner, November 27, at Hawaiian Village Motel. He succeeds Thomas E. Bissonette, '50.

Other new officers are Aaron Dowd, '64, vice-president, and Marvin Scott, '55, secretary-treasurer.

In support of the University's accelerated student recruiting efforts Tampa Alpha members have made a generous gift to their alma mater in fund-

ing travel and living accommodations for a group of mid-western high school counselors on campus for four days this spring to discuss improvement of recruiting and counseling methods.

Tampa Alpha reports a highly successful senior social hour held prior to the commencement dance at Manger Motor Inn, December 17. The chapter sponsored the reception for graduating seniors, their parents and friends and alumni.



## **St. Petersburg Beta**

St. Petersburg Beta Chapter is busy planning its annual election of officers dinner meeting. An informal covered dish luncheon also is in the works, but no dates have been announced.

## **Miami Delta**

Miami Delta Chapter sent 32 representatives to the National Council meeting and other Homecoming events at Hawaiian Village, November 13. They expect to have many more next year as word spreads about the smooth handling of Homecoming activities by the Alumni Office, Perry Keene, '51, Homecoming chairman, and Tampa Alpha, the host chapter. Miami Delta wishes to congratulate all persons responsible for Homecoming arrangements.

A Spartan holiday party was held December 17 at the home of Tom and Joyce Traina, '63. There were 62 persons present for this BYOB affair with buffet and set-ups provided at a cost of \$1.50 per person. A profit of \$52.60 went into the treasury. Members commended Bekky Leonard, '71, Pat Munz, Mildred Scremin, Anne O'Grady, '39, Gina Bryan, Mary Neville, Joann Tosch, '62, John Mitchell, '61, Mrs. Gorman Mitchell and Mrs. Tony Traina for their special help in making the Miami party a success.

The next function Miami Delta plans will be the annual election of officers banquet. Current officers will meet in early March to discuss arrangements for the event.

## **Atlanta Theta**

Atlanta Theta President Peter M. Peck, '64, has announced plans are underway for a chapter dinner meeting late this month. The program will be devoted to outlining plans for boosting the University of Tampa in '72.

## **Tampa Nu**

Tampa Nu Chapter sponsored "College Day" on the University of Tampa campus in November.

"College — what it's all about," was the theme of the college orientation program that brought more than 100 students from 12 Hillsborough County high schools to the University, November 13.

The students, mostly seniors, attended two simulated college classes and participated in a question and answer session with UT counselors.

Tampa Nu held a meeting on November 15 at the Brown Bottle, Schlitz Brewery, to discuss business related to student recruiting to include in a report to the National Association. A social hour followed the meeting.

The chapter is planning a social event to be scheduled for late this month. Included will be a brief business meeting to discuss development of scholarship programs.

## **Washington Zeta**

Washington Zeta Chapter held a wine and cheese party for members and friends at the home of a member last month. This meeting, the first official gathering of the Zeta Chapter since its formal organizational meeting last summer, was held to develop new interest and support for the University of Tampa.

## **New Chapters**

Clearwater, Sarasota and New York City will have University of Tampa alumni chapters this year, Ken Hance, director of alumni relations, announced.

First on the list for an organizational meeting this spring is the Clearwater Chapter which also will encompass Clearwater Beach, Largo and Tarpon Springs. The Sarasota chapter, which will draw members from Bradenton as well as Sarasota, will follow Clearwater.

To encourage maximum attendance by prospective New York members, the New York organizational meeting will be scheduled after the return of warm weather.



# MISSING ALUMNI

Our graduates are important to us. Each has helped the University of Tampa achieve the success it enjoys today and offers a constant challenge to all new and continuing students. We try to stay in touch with our graduates, but once in a while one will slip away leaving no forwarding address. Over the years we have collected a sizable missing persons list, the first installment of which is published here in hopes you can help us trace them. If you recognize a name drop a line to the Alumni Office.

Blackburn, Margaret Louise '60  
 Blackmon, Charles Robert '46-'47  
 Blank, Mrs. Katrina '64  
 Blecke, Adele J. Shimansdy '51-'53  
 Bledsoe, Sarah Louise '42  
 Blich, Betty Carolyn '50  
 Borbridge, John J. '56  
 Borchardt, Richard Ralph '56  
 Bosworth, William P. '57  
 Boyd, Arthur Kenneth '64  
 Bradley, Jane Clair '59  
 Braithwait, Jo Jeanne '55  
 Brennan, Betty E. Savu '42  
 Bretz, Robert '43  
 Bridges, William Bullard '52  
 Brooks, Mrs. M. E. '54  
 Brooks, Martin R. '54  
 Brooks, William Arthur '59  
 Brown, Dewey A. '61  
 Brown, James Kerr '65  
 Brunet, Nancy Mooney '66  
 Brunet, Philip Mario '52  
 Bruni, Peter Louis '61  
 Bryan, Dale K. '64  
 Bryan, Hazel '49  
 B'Smith, Charley Francis '50  
 Buckley, Judee Lee '62  
 Buckshye, Alex  
 Buettner, Eleanor C. Nall '46-'49  
 Buettner, Wilbert Louis '46-'49  
 Bullard, Sarah Jane '65  
 Burden, Martin H. '68  
 Burkett, George S. '61  
 Butler, Bernadine Adelyn Becker '59

Calkins, Sara LaBoone '50  
 Callaway, Jeanne '55  
 Cambas, Edward Earl '58  
 Carey, Ann '31-'32  
 Carey, Rita Ward '51  
 Carraway, Merry Vargo '55  
 Carter, Dolores Patrick '50  
 Carpenter, Kathleen Ferriell '67  
 Cassady, Roma Joyce '38  
 Carver, Martin '42  
 Cerrone, Donna M. '69  
 Chambers, Ira Karl '45  
 Chandavimol, Preedavan '63  
 Cherry, Vern Dale '51  
 Church, Herbert Douglas '65  
 Ciaravella, Joe '39  
 Clark, David W. '68  
 Clawson, Joseph '35  
 Clemmes, Shirley R. '54  
 Clemons, Nell V. '42  
 Clewis, Cecil M. '36  
 Cloman, Robert E. '53  
 Colvard, Patricia 'AO  
 Cocke, John '36 & '37  
 Cohen, Norman S. '64  
 Coker, A. S., Jr. '58  
 Cole, Hazel T. '44  
 Collins, Constance J. '58  
 Cone, Donna Beniger '63

Connors, Raymond '50  
 Conover, William R. III '62  
 Conrad, Olga M. '64  
 Consaul, Donald F. '62  
 Conte, Violet Mae '46  
 Cook, David F. '57-'60  
 Cook, John Alfred '53  
 Cook, Muriel Gene '42  
 Cooper, Jocelyn J. '53  
 Corces, Dalia '52  
 Correria, Armand '65  
 Cothorn, Doris I. '57  
 Couch, Melvin J. '62  
 Courjo, Mercedes '60  
 Crane, Anne Conner '35  
 Crespo, Mary Lois '41  
 Crippen, David Wells '62  
 Crocker, Marie F. '37  
 Cronin, Robert J. '68  
 Culp, Lois Holder '62  
 Cunningham, Mark '58  
 Cushing, Margaret K. '57

D'Amico, Robert C. '68  
 Damico, Norma C. '59  
 Danyo, John E. '61  
 Davidson, Ralph (Capt.) '61  
 Davis, James B. '61  
 Davis, Robert Lee III '65  
 Dean, Charlotte '49  
 Dean, Mary Ann '60  
 Dean, Sylvia E. '61  
 DeCelle, William H. '63  
 Degenova, Joseph Anthony '67  
 Dehart, Adrian H. '50  
 Del Valle, Aida '59  
 Demaria, Guadalupe '67  
 Deminico, Donna '69  
 DeMott, Gilda V. '59  
 DeMott, George P. '59  
 DeMott, Ramon A. '60  
 Dervaes, Joseph R. '63  
 DeVitt, William A. '65  
 DeVore, Clair E. '39  
 Dewolf, Marjorie '39  
 Diamond, Sara E. '51  
 DiBona, Betty Faye '46  
 DiBona, Joseph A. '49  
 Dixon, Billy V. '62  
 Dixon, Henry C. '68  
 Dobson, Rebecca L. '60  
 Doherty, John M. '66  
 Dolgin, Phyllis Joy '58  
 Dominguez, Raymond '37  
 Donohue, Daniel F. '53  
 Droxie, Marie '58  
 DuBois, Mildred E. '48  
 Dugan, Walter Henry '61  
 Duggar, Lorraine '64  
 Durland, Richard B. '63  
 Duttin, Ronald Lee '64  
 Dumas, Betty Matthews '50  
 Dunning, William R., Jr. '62  
 Durham, Myrna Lee '54  
 Durrell, Violet R. '53-'54

Dutcher, Willard J. '62  
 Dwyer, Dorothy '54

Eccone, Donald J. '60  
 Edenfield, Clyde '46  
 Edenfield, James L. '61  
 Edilla, Sonia Sandra '60  
 Edmunds, Frank Joseph '61  
 Edwards, Paul B., Jr. '37  
 Eiroa, Rosa Martinez '62  
 Elliott, Mary Jane '57-'58  
 Ellis, Clayton Neal '46  
 Elmore, Jackie '63  
 Eskelson, Bethany '54  
 Evans, Carl Lee '63

Falsone, Joe '38  
 Fava, Rose Michelle '60  
 Fernandez, Holanda '57  
 Fernandez, Judith A. '58  
 Filardo, Fred '64  
 Fineman, Gerald '51  
 Fink, Mary Elizabeth '56  
 Fisher, Daisy B. '67  
 Fisher, Gail Frances '61  
 Fisher, William A. '40  
 Fraider, Robert D. '62  
 Frederick, Isaac L. '59  
 Freedy, Anthony R. '37-'38  
 Freeman, R. C. '54  
 Fried, Janice D. '67  
 Frier, Louise I. '63  
 Frye, Donald Guy, Jr. '63  
 Frye, Elaine T. '61  
 Fuller, Harold J. '57  
 Fuller, Veda Ann '56  
 Furman, Charles D., Jr. '51

Gable, James A. '55-'59  
 Gaffin, Clayton W. '64  
 Galese, John M. '67  
 Gallen, Thomas M. '52  
 Ganier, William H. '38  
 Garcia, Larry '59  
 Garcia, Lionel '65  
 Garza, Issac '68  
 Gasbarra, Gloria '48-'49  
 Gayton, Emily W. '63  
 Geavers, James A. '58  
 Gervers, James A. '52  
 Gibson, William A. '65  
 Gilbert, Joseph L. '63  
 Gilchrist, Russell A. '67  
 Giles, Nancy Jean '62-'63  
 Gill, Donald H. '67  
 Gill, William '60  
 Girard, Estelle W. '59  
 Giuntini, Ronald Edwards  
 Glover, John Edward '67  
 Gnagey, Larry H. '61  
 Gonzalez, Albert Jr. '61  
 Gonzalez, Mirta G. '60  
 Goodman, Jack '54  
 Goyer, Doreen S. '59



# MUEZZIN NOTES

1941

**Frances S. Hoffman** has received the Teacher of the Year nomination for Pinellas County where she is department chairman for science at the Azalea Junior High School. She will be considered for the Florida Teacher of the Year award for 1972. Mrs. Hoffman is currently serving as third vice president of Beta Chapter of the University of Tampa Alumni Association.

**Francis Clair Pittman**, Tampa insurance man, was honored by Occidental Life of California at a convention in Honolulu where he was named one of the leading salesmen of the company. He serves Occidental as general agent in Tampa and qualified for the convention by meeting high sales minimums set by the company.

1947

**Manuel Alvarez**, executive vice president of Commercial Bank of Tampa, has been elected president of the American Institute of Banking. Alvarez is a member of the Administrative Management Society, past president of the East Hillsborough Optimist Club and a member of Ybor City Chamber of Commerce.

1948

**E. P. "Penn" Taliaferro, Jr.**, a native Tampan and president of The First National Bank of Tampa, has been elected director and chairman of the board of The First National Bank in Plant City. He began his banking career with The First National Bank of Tampa in 1948 and currently serves as a member of the board of directors of The First National Bank of Tampa, the First National Bank of Brooksville, First National Bank of Lakeland and the First National Bank in Punta Gorda besides being active in many other companies and civic organizations.

**Richard W. Warner** of Pensacola Beach and district claims manager of Allstate Insurance Companies, has been named "Boss of the Year" by the PBX Club of Pensacola. He holds a master's degree from Stetson University and held several other positions with Allstate before his promotion to district claims manager last June.

1949

**Lillian Hodnett Bosch**, born in Winter Haven and now a resident of Australia's Gold Coast Surfers Paradise, continues to develop her interest in art as she works to establish her privately-owned international cultural center on beach-front property. She hopes that this will become an international center for fine artists and craftsmen. Her art work has been exhibited in many parts of the world, and this year she held a one-man show at Macquarie Galleries in Canberra, the capital of Australia.

1950

**Gus Richard Jimenez** has received the Master of Education degree in student personnel from the University of Mississippi.

**James Johnson** is director of the Madrigal Singers of Largo High School. He received his master's degree from the University of South Florida.

1951

**Marvin L. Hardin** will be the hard lines merchandising manager for Montgomery Ward when the company opens its new store in Tallahassee.

**L. B. McSwain, Jr.**, will assume duties as vice president of the Tampa Board of Realtors for the coming year. He served as treasurer of the Board for 1971 and has been a member of the Realtors' Board of Directors for several years.

1952

**Mary Hall**, who has been teaching in Hillsborough county schools for 29 years, has been appointed this year as reading specialist at Kingswood Elementary School, Brandon.

1953

**Holland Aplin**, coach of Robinson High School, has been appointed county coordinator of athletics as assistant to Wayne Williamson, county athletic director.

1954

**Robert W. Rawlins, Jr.**, has been named to one of two new judgeships in Hillsborough County Criminal Court of Record by Governor Reubin Askew. He received his law degree from Stetson College of Law and prior to his appointment served as public defender.

**Paul Rigsby** assumed command on October 1 of the Florida Parole and Probation commission office in Hernando county with headquarters on the third floor of the courthouse in Brooksville. He began his career as a probation and parole officer in Tampa 17 years ago.

1955

**Judge Robert Beach**, president of the University of Tampa National Alumni Association, is the newly elected president of South Side Junior High School Parent Teacher Association in St. Petersburg.

1956

**Barbara Lovelace** is teaching fifth grade at Brooker Elementary School in Brandon.

1957

**Sydney Owen**, a native Tampan and owner of Owen Northeast Funeral Home in St. Petersburg, has been licensed by the State of Florida as one of 20 funeral directors trained to remove eyes from the deceased for cornea transplant and research purposes.

1958

**Nash Higgins** has been honored by the Florida Turf-Grass Association of Florida. He is the first recipient of an honorary lifetime membership, presented to him as the result of his many years of outstanding support and continuing contributions to FT-GA.

1959

**Jean A. Morris** reports that she is currently employed by the Duval County



School Board as a production specialist for the Instructional Television Department and that she has recently completed two half-hour color documentaries on Special Programs in Duval county which are being distributed nationally. She received her Master of Arts degree from the University of South Florida in 1969 and is presently doing additional post graduate work at the University of Florida.

## 1960



**Gerald W. Bobier**, member of the Board of the Tampa Alpha Chapter of the National Alumni Association, has been promoted from vice president of First Federal Savings and Loan of Tampa to senior vice president. His new position culminates more than 13 years in the administrative phases of commercial banking and will include the overall office development and operations of First Federal.

**Rudolph W. Helmick** has been selected as the outstanding handicapped Floridian of the year by the Governor's Committee. He is one of 49 others chosen from the remaining states who will be nominated for a national honor and the President's Trophy. He served with the Army during World War II and is currently employed as chief placement interviewer with the State Employment Service.

**Mary M. Walker** has recently been employed as a teacher with the Killeen Independent School District, Killeen, Texas.

## 1961

**James B. Davis**, vice president, First Federal Savings and Loan Association of Osceola County, has been elected a director of the association. Before joining the Osceola county firm last April he was associated with Ocala Federal Savings and Loan and has long been active in American Savings and Loan Institute work.

**Leon Wayne Mitchell, M.D.**, announces the opening of his office for the practice of internal medicine at 3004 Fletcher Avenue in Tampa.

**Thomas S. Simmons** has become an instructor on the faculty of Southeastern Bible College in Birmingham, Alabama. He is the pastor of the Clairmont Avenue Baptist Church in that city where he and his wife, Bunny, reside with their two children.

## 1963

**George A. Clement**, who began his career as a scientific computer program designer, is now vice president of operations for Suncoast Highland Corporation, Largo. He is one of four young men who in 1964 founded the land development company which has become a major developer of acreage in central Florida with interests in Hernando, Pasco and Charlotte counties.

**James W. Sloan**, administrative aide to District 2 County Commissioner Mrs. Lori Wilson, has been named tourism coordinator for the Brevard Economic Development Council. Prior to his present position he served in the U.S. Navy and now lives in Cocoa Beach with his wife, Christie.

**Dr. Ronald C. Trost**, behavioral psychologist of the University of the South, Seawannee, Tennessee, is currently conducting drug addiction research experiments involving rhesus monkeys which he has trained in what he believes to be America's only undergraduate primate lab.

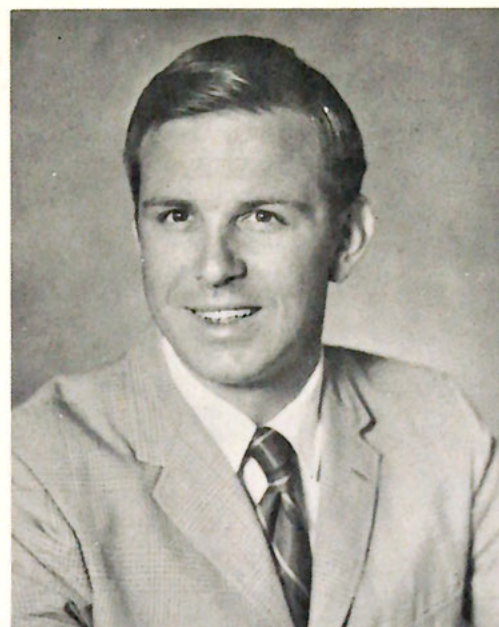
## 1964

**Edward P. Meyerson** has recently been made a partner of the law firm Denaburg, Schoel and Meyerson in Birmingham, Alabama, and is a member of both the Alabama and Florida Bars.

## 1965

**John Amos, Jr.**, a resident of Florida for the past 14 years, has been appointed director of marketing and public relations for Resort Inns, Inc., which operates Schrafft's Sandpiper Resort Inn, St. Petersburg Beach. His past experience includes positions with Electronics Communications, Inc., Infra Electronics, Bendix Aviation Corporation. Currently he is a member of the American Management Association.

**Artisti Parsons**, who was recently named Pasco county's Teacher of the Year, is presently teaching music at the East Elementary School of Zephyrhills.



**Joseph M. Tomaino** has been appointed director of alumni services for the University of South Florida, where he received a master's degree in August of 1971. At the time of his appointment he was serving as assistant director of student placement services and has been employed as an instructor and in administrative positions at USF since 1967.

**Captain Arthur C. Wittich** was graduated from the Osteopathic School of Surgery at Des Moines, Iowa, last summer and is serving his internship at Brooke General Hospital in San Antonio, Texas, in the Army Medical Corps.

## 1966

**Richard R. Davison** received the Master's Degree in Gifted Education from the University of South Florida on December 7, 1971, where he will continue work towards a post-master's degree. He and his wife, the former Dorinda Garcia, are teachers in the Hillsborough county school system and have a daughter, Roxanne Cherié, born September 28, 1969.

**Captain James E. Hoff, Sr.**, has received his Master of Science degree at the Air Force Institute of Technology, Wright-Patterson AFB, Ohio. He will remain at Wright-Patterson for duty with Headquarters, Air Force Logistics Command.

**James L. Lunetto** is the president of Formulate Laboratory, Inc., located in Drew Park. The firm which was started by Lunetto in 1968 and produces a nutritive weight-gaining food supplement, "Result," which was developed by him together with the aid of doctors, dietitians, food experts, chemists and biochemists. The product is widely distributed to high schools and colleges throughout the country for use by their athletes.



## 1967

**Jerold A. Little** has joined the staff of The Exchange Bank of Temple Terrace as assistant cashier in the installment loan department. He resides in Tampa with his wife, Virgie, and sons, Mike, 8, and Steve, 4.

## 1968

**Thomas G. Allen** has been named supervisor of the group claims department in the Columbia Casualty and Surety Division office of Aetna Life and Casualty in Columbia, S.C.

**Valse F. Johnson** is associated with the Division of Development Coordination in Bartow as coordinator for emergency employment programs. His new appointment is the result of the decision by county commissioners to change the planning department status to that of a division which will include departments of planning, code enforcement and development programs.

## 1969

**Ronald Brown**, former University of Tampa small college All-American, is presently employed as Tampa Catholic High School's defensive line coach.

**Brenda Cagiano** is a new fifth grade teacher at Lewis Elementary School this year. She and her husband reside at 401 Northeast Fifth Street, Fort Meade.

**Lieutenant William C. Diehl** has been awarded silver wings upon graduation from U.S. Air Force navigator training at Mather AFB, Calif. He will be assigned to MacDill AFB for flying duty with the Tactical Air Command. He was commissioned in 1970 upon completion of Officer Training School at Lackland AFB, Texas.

**Norman Redding** has received the Master's degree in Physical Education from the University of Florida. This fall he joined the coaching staff of Lake Wales High School where he also will teach physical education.

## 1970

**Robert Newman III** has been elected vice president of the Birch Advertising Agency, Clearwater, where he has been serving as an account executive before his promotion. During his military service he was assigned to the Voice of America and has held previous positions in educational and commercial television.

**Virgil F. Vollmar** has been commissioned a second lieutenant in the U.S. Air Force upon graduation from Officer Training School at Lackland AFB, Texas. He was selected for OTS through competitive examination and will be assigned to Mather AFB, Calif., for navigator training.

## 1971

**Ronald C. Fimbel** has been commissioned a second lieutenant in the U.S. Air Force upon graduation from Officer Training School at Lackland AFB, Texas. Selected for OTS through competitive examination, he is being assigned to Reese AFB, Texas, for pilot training.

**Brig. Gen. Sam Huey, USAF ret.**, is continuing his communications and electronics work which began at MacDill Air Force Base with U.S. Strike Command. His new position is senior technical analyst for General Telephone Electronic Data Services in Tampa.

**Arthur Perla** has been appointed to the teaching staff of Seffner Elementary School where he teaches fourth grade.

## MARRIAGES

**James Lee Frain**, '71, and Peggy Ricarda Matulewitz exchanged wedding vows in Temple Terrace Presbyterian Church. The couple live on Society Drive, Tampa.

**Douglas Jeffrey Haut**, '71, married Frances Elaine Baldwin at the Sheraton-Tampa Motor Inn. The couple live in Bridgeport, Connecticut.

**Georgia Anne Hopper**, '70, has married Anthony Spinelli in Elizabeth, New Jersey.

**David Paul Hoyle**, '71, married Bonnie Arlene Isbrecht at Saint John's Catholic Church in St. Petersburg. The couple now live in St. Petersburg.

**Rebekkah Housholder**, '69, was married to Tom Leonard on August 7. The bride teaches in Dade county and her husband is associated with the Leonard Brothers Trucking Company.

**Lucille Rose LoPresti**, '68, became the bride of **Frank John Honkus**, '67, on August 21 at Sacred Heart Church in Newburgh, N.Y.

**David Maguire**, '67, was married this summer to Virginia Zang. He is a teacher in the West Babylon school district on the 5th and 6th grade level and lives with his bride in North Babylon, N.Y.

**John A. Perry**, '67, was married to Ava Jean Culbreath on August 20 in Tallahassee. They will make their home in Miami where he teaches at Van Guard School and also is working on his master's degree at Florida Atlantic University.

**Lunell Rogers**, '63, will be married this month to the Reverend Marcus Roy Johnson in Panama City. The bride elect received a Master of Arts degree from the University of South Florida and is presently employed by the Bay County Board of Public Instruction at Oakland Terrace Elementary School.

**Martin Rossbach**, '62, was married to Sylvia Velasco on August 14. Both are employed as teachers in Dade county.

**Mary Anne Sylvester**, '64, married John R. Peek in Immanuel Lutheran Church, Evanston, Illinois. The couple will live in Sarasota where the bride teaches Spanish and her husband operates Lawn-Maid Company.

**Lyla Sarah Louise Thisse**, '56, became the bride of Donald William Semones on October 16 in Faith United Methodist Church in Tampa. She is a teacher at Tinker Elementary School and her husband is a printer for The Tampa Tribune Company.

## DEATHS

**George W. Crites, Jr.**, '51, passed away on September 19, 1971. He was in the insurance business in Tampa for 22 years and had been active in the city's business and civic affairs. He was a native Tampan and in 1965 was named alumnus of the year at the University of Tampa.

**Gene Holt Lasswell**, '49, Wildwood, died following a sudden illness. Born in Tampa, he was a teacher at Wildwood High School.

**Charles William Luther**, of Volusia County, died recently following an illness. Luther was graduated from the University of Florida Law School and served nearly three decades as chief legal counsel for the now-abolished Volusia County Commission.

**Kyong Ja (Lee) Ericsson**, '63, of River-view, Fla., died recently at her home. A native of Korea, Mrs. Ericsson had lived in the Tampa area for nine years.



# SPORTS PAGE

## The New Spartan Decade

University of Tampa Athletic Director, Gus Dielens has announced the 1972 Spartan schedule and season ticket prices in a new era for Tampa football, dubbed "The New Spartan Decade."

The eight home-game schedule includes an opening contest with 14th ranked Toledo, sporting a 35-game win streak after a victory over Richmond in the Tangerine Bowl. This encounter is set for September 9, the first scheduled college game in the nation.

Included on the home slate are Eastern Michigan, ranked third in the college division, September 23; Louisville, October 7; Southern Illinois, October 14, and Drake, October 21.

Rounding out the Spartan home package are Indiana State, November 11; Bowling Green, November 18, and Vanderbilt, the finale on November 25.

Again Florida A M will meet Tampa in Tampa Stadium, but the game is separate from the season ticket package.

The Spartans play their two road games against Northern Michigan, September 16, and then meet Kansas State on September 30.

"We feel that this is a competitive schedule," said Dielens. "Facing Toledo, Drake, Louisville and Vanderbilt look like tough assignments."

With "The New Spartan Decade" comes a new ticket price.

Season ticket books, including eight games, are \$36.00. Orders are already being taken.

Dielens cited three main points of the season ticket plan for "The New Spartan Decade".

First, each season ticket holder will receive pre-printed tickets for eight home games.

Second, all season ticket holders will receive a ticket priority number, which assures the same seats or better for future years. Past season holders have already been assigned a priority number for retention of their same seats if they renew for the '72 season.

Third, season ticket holders can participate in an exclusive parking plan, details to be announced in the near future.

"We have never given the public a reason to buy season tickets early," stated Dielens. "A reduced price, parking, and a priority system make this a package of tremendous value."

For ticket orders, call the Athletic Ticket Office at 251-2028 or 257-6401, or come by the office at 905 North Boulevard.

## Winning Epilogue

A so-so football season ended on a good note with a 56-14 win over rival Florida A & M and three Spartans named to the 1971 Little All-American team.

The Rattlers couldn't handle Tampa although they tried hard. For A & M it was the worst defeat since 1954.

Standouts in that game, Bobby Brown, Sammy Gellerstedt and Ron Mikolajczyk were destined for other honors. Gellerstedt and Mikolajczyk were named first team Little All-Americans by the Associated Press, while Brown received honorable mention.

Brown and Gellerstedt along with kicker Jesse Soper were invited to play in the American Bowl game.

Although 6-5 ended the year, Coach Bill Fulcher expects a comeback in 1972. The entire offense will return with names like Carter, Orndorff, Edlin, Wakefield and Solomon leading the roster.

With December graduation most of the losses hit the defense. Included were Gellerstedt and Brown. Also graduating was Wayne Jones who will be most remembered for a 89 yard punt return against Miami.

A new stadium record, school record and personal high was set by another of the seniors — Jesse Soper. He kicked a 51-yard field goal against East Carolina. Willie Lee Jones, Buzz Geiger, and Barry Perez round out the graduates for 1971.

In late February, the corps takes the field again to start five weeks of spring drills capped by the Spartan Spring Game.

## Spring Has Sprung

Forty-three prospective baseball players appeared at the first meeting of the University of Tampa baseball team this week as Head Coach Dan Sikes discussed the outlook for the coming season.

"This is the greatest number ever to come out for baseball since I have been the coach," said Sikes. "This makes me very optimistic."

Two other spring sports are underway, golf and tennis. The Spartan golfers have been practicing since early November and the tennis team under Coach Sam Bailey are working out daily at the University's courts.

## Sports Bulletin

Earl Bruce has been named head coach of the Spartan football team, succeeding Bill Fulcher who accepted the same post at Georgia Tech. Bruce has been backfield coach at Ohio State. Look for his story in the Spring issue of the Muezzin.



# Land for a New Mark



By Irving Edelson

Something is happening at the University of Tampa which is bound to deliver greater impact within the community and the University than any other single event in the school's 41-year history — in one fell swoop we are tripling the size of the main campus by acquiring the fairgrounds.

Sprawling for 33.11 acres due west of the main campus backyard, the Florida State Fairgrounds, eyed covetously by UT administrators, faculty and students for several decades, will be ours in exchange for 23.72 acres of University-owned riverfront property located north of Cass Street. Adding to the 15 acres comprising the non-urban renewal campus, UT's complex will expand to 48.11 acres.

Appraised value of the fairgrounds has been set at \$582,000 in contrast to the \$738,000 estimated value of the riverfront property. The fairgrounds are especially desirable to the University because of their proximity to the main campus, easy accessibility and the existing buildings which can readily

be converted to study centers.

Another phase of the agreement calls for the University to assume the \$46,000 annual operational costs for Plant Park, McKay Auditorium, Gun Park and Tampa Municipal Museum whose name will be changed to the H. B. Plant Museum.

Under terms of the proposal the University will be permitted to use the riverfront property for its intramural and recreational programs for a period of 50 years. This compensates for the difference in monetary value between the two tracts and the University's assumption of operating costs of the city-owned segments of the campus.

The city will realize immediate benefits from the facilities already established at the riverfront and from availability of University personnel to assist with recreational training programs. The property's location in an area encompassed by the Model Cities program provides the University and the city ideal recreational and training grounds.

Facilities at the riverfront, installed by the University since acquisition from the Urban Renewal Agency January 10, 1969, include a swimming





pool and dressing facilities, a boat basin, tennis and basketball courts, football, soccer, softball and baseball fields, a deep well and sprinkler system and fencing.

In announcing the transaction with Tampa Mayor Dick Greco UT President B. D. Owens said the plan sets a precedent as a cooperative venture between a city and a private university "in doing something for the citizenry which otherwise would not be possible.

"The University of Tampa needs additional space contiguous to its present holdings in order to continue to serve the educational, social and cultural needs of the community and nation and to continue its expanding leadership role in private higher education in the Southeastern region of the United States."

Mayor Greco observed: "The City of Tampa has considerable need for immediate and expanded recreational facilities in order to meet its continuing obligations to the citizens of Tampa and to provide viable programs as planned within the scope of the Model Cities program.

"This cooperative work with the University of Tampa for development of a summer recreation program will dovetail with the City Recreation and Model Cities program to offer one of the most comprehensive summer urban recreation programs on one piece of property."

Long discussed as the only logical means of expansion for the hemmed-in University of Tampa, the fairgrounds property becomes available after the 1973 fair. The Gasparilla and Fairgrounds Association has acquired a new piece of property near I-4 and U.S. 301 and plans to move there after the '73 event.

The Florida State Legislature in anticipating educational needs of the state has enacted legislation which provides for the transfer of the fairgrounds to the University of Tampa, and the University board of trustees has given its approval. The transaction is expected to be finalized by approval of the Tampa City Council.

Advantages to the city in acquiring the urban renewal property include the following:

Central location of recreation facilities; easy tie-in of city recreation program with Model Cities; opportunity to provide a wide range of sports at a single location (soccer, basketball, swimming, tennis, gymnastics, wrestling, football, volleyball, tumbling, softball, baseball, boating, water skiing, sailing);

Opportunity to provide cultural programs for participants on inclement days through cooperation with the University in use of its gym facilities; Model Cities program coordination and manpower backup by the University in cooperation with the City Recreational Department; closer liaison between the city and the University; continuation of the city's cultural, recreational, educational, aesthetic and economic growth through acquisition of essential space;

Expansion of the city's "green belt" beautification program and development of the east bank of the Hillsborough River; availability of highly desirable property for future city building needs.

Advantages of the swap to the University are:

Space for specialized educational needs contiguous to the existing campus; furtherment of the University's ability to grow to its projected maximum of 3,000 students; improvement of physical appearance and use of marginal property for development of an ideally cohesive campus in the center of Tampa;

Strengthened ability of the University to serve the community better through improved cultural and recreational facilities; assurance of continued presence of a private institution of high quality with outstanding academic and athletic programs which boost the images of both the city and the University of Tampa throughout the nation.



A sight-seeing tour bus stops at the University of Tampa. Passengers crane their necks and squint from the sun's glare on the Plant Hall minarets. Some get out cameras. To those who know the innersanctum the minarets are more than a visual curiosity. They mark the scene of rewarding intellectual revelations. For an insider's view of Tampa's landmark of learning the Muezzin has asked internationally celebrated poet Dr. J. Duane Locke, associate professor of English, to inscribe the following "native" photo tour...

# Inner Spectacle



**Dr. J. Duane Locke**

Noted for his electric inner-awareness of the world outside himself and his agility in drawing word pictures with graphic precision, Duane Locke was the most likely guide for an insider's tour of Tampa's landmark of learning.

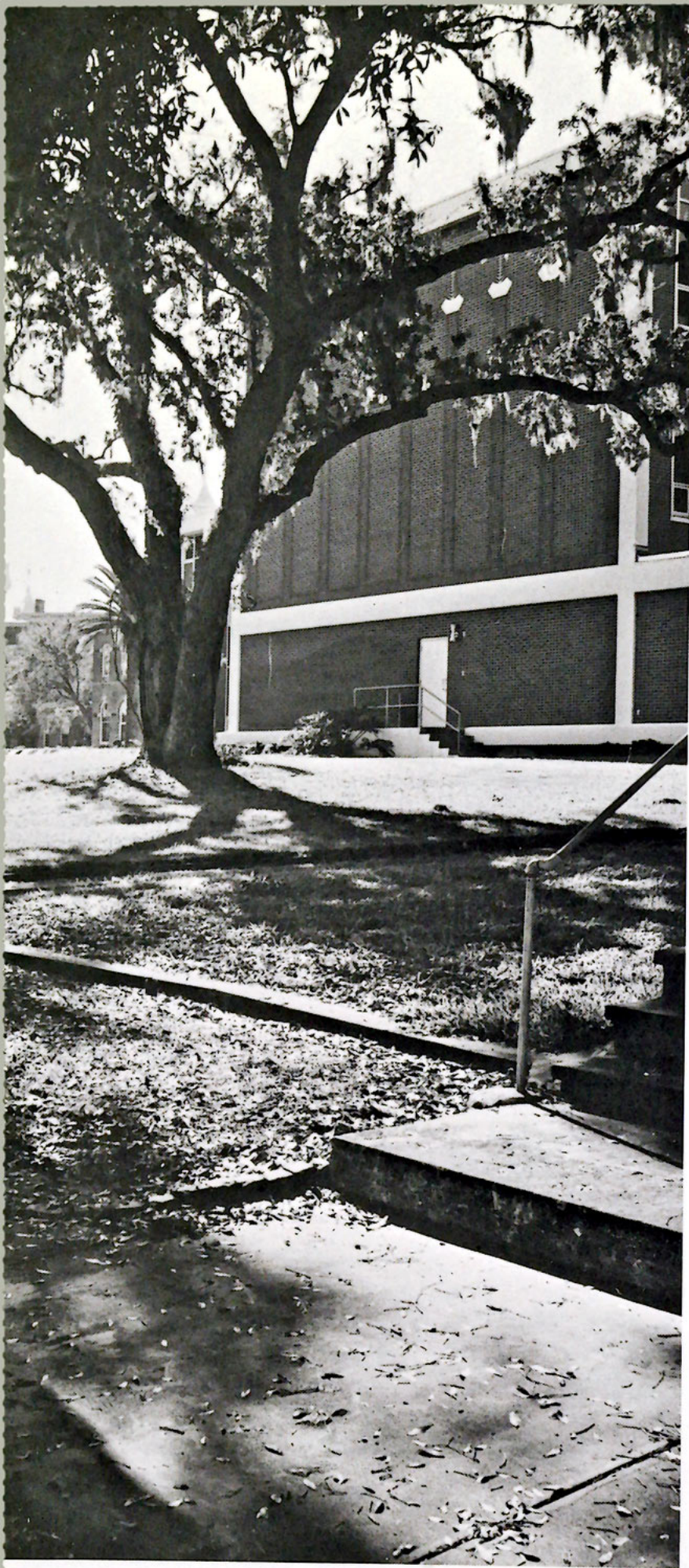
Among the most published poets on the contemporary scene, Dr. Locke recently has added three more distinctions to his weighty list of honors and awards. The DeKalb Literary Arts Journal, a nationwide quarterly, selected his poem, "Orpheus Outside His Cave a Few Minutes before the Meneads Tore Him Apart," as a prize winner in its annual contest.

A dual honor came to Dr. Locke in late November when his poem "Daphne" took first prize for free verse in the 20th Annual Florida Competition for National Poetry Week. In the same contest Locke's student Alan Britt, associate editor of UT's poetry magazine, took second prize for an offering entitled "Lorca."

Dr. Locke was named outstanding professor with more than five years' tenure by the UT National Alumni Association during the Homecoming celebration in November. Recently he served with Fred Wolven, a college administrator in Michigan, as co-editor of the new anthology of American poetry titled, "This Generation."







*Dark oak hearing the distance,  
the night wink of the flown firefly,  
the wind's eyelashes whispering,  
the steeples of dark spiderwebs  
singing to the silver tower.  
Prayer rugs of sunlight pressed  
by the knees of the sky.*



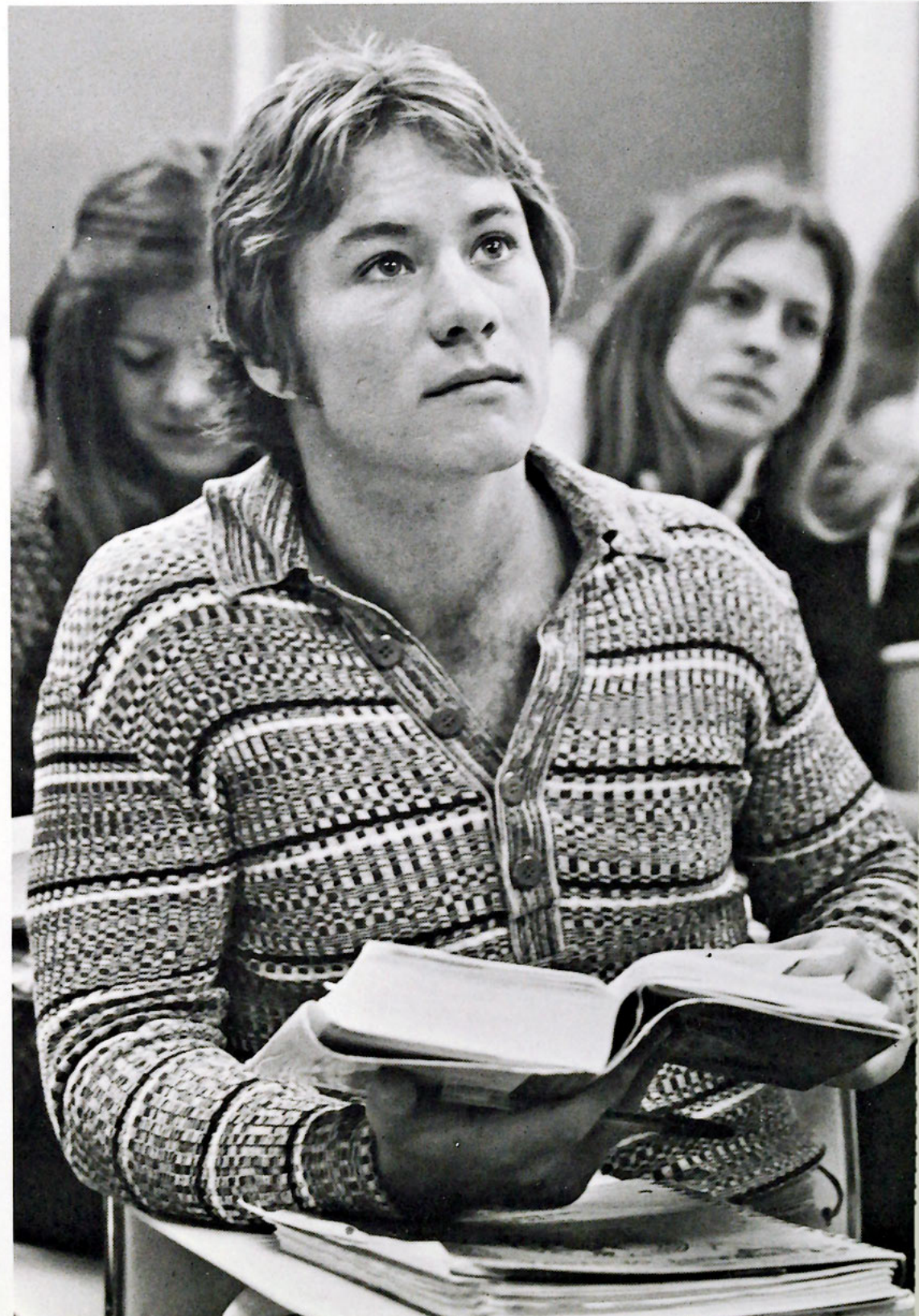
*She walks seen only  
by the dragonfly's eye  
and the tear of a swallow.  
Her voice sleeps  
in the thin bamboo shadow  
and dreams about  
wild horses and flickering candles.  
The room is a lantern lit  
by arrows shot from old hours.*





*A floor sky, stars  
stretched  
to quivering lines  
meeting  
and touching  
the timid shadow  
meeting  
and marrying  
the shy darkness.  
The darkness arising  
out from a sea of wood  
and clothing itself  
in blazing light.*

*Cave in the sea of the mind,  
the sea anemone pink green puddled floor,  
the green haired trembling dripping ledges,  
the glistening walls, the glowing ceiling,  
all arising out from the voice of voices,  
voices heard on noon sands,  
voices heard by midnight hedges,  
voices walking under water,  
voices sleeping on the other side of the sky,  
voices arising out of scrolls and skulls,  
voices becoming a face.*







*A dark horse gallops  
through a hand  
towards wooden flowers  
glowing  
in the night's spattered sun.  
On stairs flower headed men  
drift downwards,  
their bodies invisible and cool.  
In back the darkest steps  
and in a hurricane of light,  
a rainstorm of falling starfish.*

*The clock is a day  
in the waters of a mirror  
sunk beneath the sand.  
Cricket's voices emerge  
from a coral reef  
at the end of the long hallway  
and send out green voices  
to reach towards sidedoors  
where seaweed  
is playing a lute  
and fusing flesh,  
water and wood.*



*The brick's white voices  
echo  
through the boards  
and splash  
in the rivers  
their dreams have created.  
All voices spiral  
towards the unknown beginning  
of the unknown arms  
where light takes off  
on a long flight  
as its feathers  
dips in the wood waters.*



