

THE UNIVERSITY OF TAMPA

Journal

FOR ALUMNI & FRIENDS

VOL. VIII, NO. 1 SEPTEMBER 1992



THE ANNUAL REPORT ISSUE

T A B L E O F C O N T E N T S

2 Something from the past, for the future

After a year of contemplation about the University's past, President David Ruffer is beginning to set a new course for UT, one which is deeply rooted in our liberal arts heritage.



4 Five Community Leaders

When the UT Board of Trustees meet on Oct. 22 there will be five new members to help guide the University affairs.

5 An MBA Success Story

After preparing thousands of graduate students for careers in management, UT's MBA program enters a new era at age 20.

6 They're All Champions

Spartans took the grail in baseball this year, and the other Spartan teams did all right too.



8



Alumni Chapters

UT alumni are showing up in the oddest places: on boats in New York Harbor, on major league baseball fields, at Wrigley Field in Chicago, and soon, maybe in Atlanta at the Summer Olympics. It's all due to the formation of new alumni chapters.

9

Keep in Touch

From '41 to '92, it's all here. Catch up on your classmates lives: their careers, marriages, children and comings and goings in Class Notes.

■ ABOUT THE COVER ■

With the completion of the dome over Fletcher Lounge during the summer, the entire roof line of the century-old former Tampa Bay Hotel has been re-covered in stainless steel and should last another 100 years. The project of re-covering the six minarets, four cupolas, three domes, and the roof between them began in

1986 with a grant from the city of Tampa. Six years later, with the aid of state and city grants, and donations from the public, more than \$2,886,000 had spent on the renovation. Cost for the Fletcher Dome alone was \$400,000. Tampa photographer Jeffery Young took the photo.

13 Partners in Education

The University extends its appreciation to the contributors who have made a price-less investment in the lives of UT students.



28 Giving and Taking

A gift always has a way of coming back to you in a thousand ways after you get past the hard part and just "let go."

29 It's a Date

Mark your calendar for some upcoming UT events, offering something of interest for everyone.



The University Of

T A M P A

Journal

The University of Tampa Journal (USPS 748-810) is published four times a year by The University of Tampa, 401 W. Kennedy Blvd., Tampa, FL 33606-1490, with issues in September, December, March and June. Second-class postage paid at Tampa, FL.

Grant Donaldson
Editor

Anne Rowland
Designer

Contributing Writers:
Phil Hills, Jim Kelly, Gil Swalls

POSTMASTER: Send address changes to The Journal,
The University of Tampa, Box H, Tampa, FL 33606-1490.

The University of Tampa is an Affirmative Action/Equal Opportunity Employer.

DUPLICATE MAILINGS

Please help us cut down on mailing costs. If your household is receiving more than one copy of the Journal, send us the address labels from each copy. We will review our records and correct any duplication.

Send your labels to: The University of Tampa, Office of Alumni Relations, Box H, 401 W. Kennedy Blvd., Tampa, FL 33606-1490.

AFTER A YEAR OF STUDY: PRESIDENT RUFFER SETS NEW AGENDA FOR THE UNIVERSITY

By Grant Donaldson
Editor

A year after becoming UT's ninth president, David Ruffer has begun a process of defining his vision for the University: a vision aimed at taking the institution to the level of academic excellence it will need to survive in the twenty-first century.

He spent his first year "getting a feel for the place," asking questions, reading, and getting to understand the history of UT and the place it occupies in the community.

"I decided before I got here that I wasn't going to make any substantial changes for at least a year. I needed to understand the history of the place. You can't know where you are going unless you know where you've been," says Ruffer.

What Ruffer said he found was a University with an excellent faculty and curriculum but also one which had lost sight of its identity.

"UT seemed to be uncertain about its place in higher education, about where it was headed and what it needed to do to get there. It was evident in the way we defined ourselves to various constituencies and it was reflected in our student profile."

Ruffer, an historian and biologist, began systematically digging through the University's archives, reading everything he could, beginning with the vision outlined in 1931 by Frederic Spaulding, UT's first president.

His search took him through early books written about the University and subsequently resulted in the University's limited publication in September of Presi-

dent Emeritus David M. DeLo's memoirs, which detail a period in the University's history spanning the years from 1958 to 1971.

Defining the Liberal Arts

Even before he concluded his orientation, Ruffer began to reaffirm the University's mission as a liberal arts university. Though the University has been rooted in the liberal arts since its inception, Ruffer agrees that the term needs further definition before some of the constituencies, both on and off campus, fully understand what he means. But the re-dedication of UT as a liberal arts university is the beginning of the re-education process.

One misconception which occurred soon after he began using the phrase was in some quarters of the Tampa business community which interpreted the message as a signal that the University was beginning to de-emphasize its business connections to downtown.

Ruffer counters that the strong business orientation at UT remains a major part of the liberal arts component and the College of Business continues to be

"UT seemed to be uncertain about its place in higher education, about where it was headed and what it needed to do to get there. It was evident in the way we defined ourselves to various constituencies and it was reflected in our student profile."

— President Ruffer

strengthened in its current mission of producing quality business majors with liberal arts backgrounds. However, that mission will be shared equally with the College of Liberal Arts and Sciences which has its own unique qualities.



David G. Ruffer

'Reinvention' of the Economic Side

Ruffer's initial emphasis during the next year will not be on the academic side, which he considers to be strong, but on the administration of the daily business affairs of the University.

In July he issued a booklet entitled "A Liberal Arts University for a New Millennium" which is the first outline of a multi-step process of "reinventing" the University.

"This is not a reorganization. It's much more fundamental than that. It is a reinvention of the way we do business," he explained.

Ruffer intends to use as his "reinvention" model a major component of the Total Quality Management (TQM) discipline which is being adopted widely by American manufacturing and service companies as a way to regain their lost competitive edge in global markets.

TQM was adopted by the Japanese after W.W. II as a method of rebuilding their shattered economy. The system, developed by American academic W. Edwards Deming, is credited with having propelled the Japanese economy into world prominence. And the Japanese are now teaching the system to American businessmen.



Managing Processes is the Key

A major component of TQM is called **process management**, an approach which uses a team concept to solving problems. The process is difficult to comprehend for most Americans who are used to a vertical organization in which bosses and vice presidents make the decisions and workers follow their directives.

One of the major differences is that in process management the teams also make decisions about the product or service, from conception to completion. There are hundreds of examples of improved communication, efficiency and results in companies which have used the process management approach.

The discipline has not been widely used by American Universities as yet, but Ruffer expects it may be one way many small private universities such as UT will survive in a climate of increasing costs.

"We provide a product, education, and our customer is the student," said Ruffer. "If we don't keep that in mind in everything we do, we lose sight of why we are here, and we lose students (customers)."

A Case in Point

The University applied the process management approach two years ago in its spring registration after it became evident that students were greatly frustrated with the time-consuming and confusing operation.

Then President Bruce Samson appointed Student Affairs Vice President Jeff Klepfer to "fix" the registration problems. Klepfer's authority cut across all vice presidential lines. He assembled a team composed of every department involved in the process. The result was a smoother, more efficient model which reduced the frustration level of students.

While not all the problems have been solved, the process continues to be refined and used today.

The example illustrates another important difference between TQM and traditional American management structures. Most companies and universities use a vertical system in which information and decisions flow up and down between vice presidents and workers who are performing certain functions.

The flaw in that process, some say, is that communication between the various related functions doesn't occur and problems are created.

Under the TQM approach the organizational structure is placed on its side and all the related functions associated with an objective are

integrated into a process and managed by a team representing all the departments.

What Ruffer said he envisions is a series of interlocking processes which will take students from high school and carry them through the University to alumni status, a journey lasting from four to six years (for part time students) which involves every department in the University.

He concedes that the process management concept is still vague and confusing to staff, administrators and faculty.

"This process is new to many of us, but the confusion will dissipate as the faculty, staff and administrators begin to define the processes for themselves. A great deal of training and leadership is planned as we go along. Everyone," he added, "will be involved in the decision-making, from custodial workers and secretaries to administrators."

In order to help with that defining process, Ruffer has turned his senior staff into a **quality council** which is charged with identifying the processes and acting as a coordinating body for the process teams.

In-House Expertise

Ruffer didn't have to look any further than his own faculty to find the expertise necessary to engineer the reinvention. Among those advising him are Ron Vaughn, dean of the College of Business, an advocate of TQM who is already in the process of adopting the discipline in his college.

Frank Gryna, who joined the University in September 1991 to head the new Center for Quality, is the second member of the advising team. He is best known for his contributions to two landmark publications: "Quality Control Handbook," for which he was associate editor, and "Quality Planning and Analysis," which he co-authored with J. M. Juran.

Before coming to UT, Gryna was a senior vice president at the Juran Institute, recognized worldwide as a leading source of training and consulting for TQM.

The third member of the advising team is Burton N. Lowe, chair and professor of management at UT.

The eventual objective of the project is to stabilize student enrollment, increase retention, improve the student profile, free up limited resources for academic and program development and a host of other outcomes which together will help UT develop into a stronger and more prestigious institution.

Advocates of TQM caution that the adoption of its principles is a long and tedious process but that the rewards are worth the investment.

Says Ruffer, "We have no choice. We must change if

we are to meet the challenges of the 1990s and beyond."

UT

"We provide a product, education, and our customer is the student," said Ruffer. "If we don't keep that in mind in everything we do, we lose sight of why we are here, and we lose students."
— President Ruffer

"Before coming to UT, Gryna was a senior vice president at the Juran Institute, recognized worldwide as a leading source of training and consulting for TQM."

Five New Trustees Named to Board

The University named five new members to its Board of Trustees at its year-end meeting in May. They will attend their first meeting as trustees on Oct. 22.

James Allen Ingram Jr. (1 year) has been with Allstate Insurance Co. in Pinellas County since 1968. He is president of The University of Tampa Parents Council, and vice president of the Links Condominium Association.

J. Larry Massingill (1 year) is chief executive officer of the Elmer J. Krauss Organization, Realtors. Massingill spent

18 months at The University of Tampa as vice president of business and finance prior to joining the Krauss Organization. He is on the UT Board of Fellows and is a member of Leadership Tampa, and the Downtown Exchange Club.

Paul C. Petti (2 years) has worked for the CB Commercial Real Estate Group, Inc. in Tampa since 1982. He is a 1982 UT graduate, a past president of the Tampa Alpha Alumni Association, president elect of the UT National Alumni Association and is a member of the UT Board of Counselors.

Mrs. Ruth W. Turbeville (1 year) is president of the Chiselers Inc., a volunteer support group of the University which is dedicated to the preservation of H.B. Plant Hall, a national historic landmark. She is married to "Jack" Turbeville, a former UT trustee.

Bruce R. Zelazoski (1 year) has been with the Tampa firm of Fraser & Powers Inc. since August 1990. Fraser is a merger and acquisition consulting firm specializing in representation of medium-sized companies. Zelazoski is also chairman of the UT Counselors. **UT**



James Allen Ingram, Jr.



J. Larry Massingill



Paul C. Petti



Mrs. Ruth W. Turbeville



Bruce R. Zelazoski

BEAUTY TO BEHOLD

PLANT'S PALACE

Henry B. Plant and the Tampa Bay Hotel

Internationally known photographer Tommy Thompson captures the mystique of the architectural wonder — Plant Hall — in this magnificent, full-color tribute to the 100 years of the Tampa Bay Hotel.

Peer through the keyholes, marvel at the rich wood and iron detailing, experience golden mornings in Plant Park and purple dusks over the minarets.

Relive the history, as Dr. James Covington, professor emeritus recounts the story of railroad magnate Henry B. Plant and the evolution of his luxury hotel into the main academic building of The University of Tampa. Dozens of vintage photographs in black and white bring the story to life.

To order your copy of *Plant's Palace*, contact the Office of Institutional Advancement at (813) 253-6220. The cost of the book is \$29.95, plus \$3.50 for shipping and handling. Florida residents add \$1.80 for tax.

The Pinter Review:

Annual Essays

"... a splendid new title and a must for theater collections."

— *The Library Journal*

"For libraries serving graduate students and advanced undergraduates in English, theater and film."

— K. McLintock, *Choice*

Available in hardcover and paperback

Library Subscription Rates

- One year: 25* • Two years: \$45* • Three years: \$65*

*Add \$5 for hardcover edition

The Harold Pinter Society Membership Dues

- One year: \$15 (husband/wife: \$20) • Two years: \$25
- Sponsor: \$50 • Lifetime: \$100
- Student/emeritus/unemployed: \$10

Send manuscripts and editorial correspondence to:

Frank Gillen • The University of Tampa • Box 11F
401 West Kennedy Blvd. • Tampa, FL 33606-1490

Send membership dues, subscriptions and inquiries to:

Steven H. Gale • Harold Pinter Society
Kentucky State University • Frankfort, KY 40601

UT-MBA Program Enters 20th Year

Professor Mike Truscott remembers when UT's MBA program offered only four courses. He should, he taught two of them: macro economics and managerial economics.

That was in 1973. Truscott had been teaching economics at UT for two years when President B.D. Owens requested the Business and Economics Division to offer the Master of Business Administration (MBA) degree under the guidance of Chairman Bob Henderson.

There were 59 students in the first class, among them a student who would one day run the program. It was Everett Richards, who retired from UT last year.

Much has changed as the program enters its 20th year.

In 1973, recalls Truscott, the only competition for UT's MBA degree was the University of South Florida.

Today no less than 11 universities are recruiting in the Tampa Bay area for the yearly crop of candidates who are seeking graduate business degrees. As competition for high-profile students heats up, so has the expense and energy necessary to keep the program in the forefront.

UT business professors Mike Truscott, Everett Richards, Lee Hoke, Jim Fesmire and Ron Vaughn, former department chairs, have all had a stint or two running the MBA program which this year enrolled 359 students, an all-time record. There are 25 Ph.D. qualified professors teaching the courses.

In the early days, it was customary for the division chair to run the program but there was often precious little funding for promotion, program development or additional faculty.

Truscott remembers the infant MBA program as a shoe-string operation that received little funding or attention from the administration after it was launched.

"Even back in the early 1980s we were only getting about \$1,000 a year for promotion. The program was good but students heard about it mostly by word of mouth," said Truscott.

When Lee Hoke was running the MBA in 1986 he lamented that if he needed to

woo a downtown businessman he usually invited the potential donor to the Student Union's River Room for a \$1.36 lunch.

But the program was growing in spite of the meager funding and it was Hoke who in 1987 threatened to cap enrollment because classes were exceeding the optimum size for good teaching. The result was more professors.

Major changes began in 1988 when President Bruce Samson set up the two-college system at UT. The College of Business was the first to be formed and Vaughn, who had been in charge of the MBA program for a short time, was named dean of the college in June 1989.

"I think the MBA program is the jewel in UT's crown, certainly the jewel in the College of Business," said Vaughn.

While others have been charged with administering the MBA since Vaughn became dean of the college (among them Mike Truscott and Ken Kraft, the current director of graduate studies) most agree his support and prodding have kept it on the cutting edge.

Though he is satisfied with the climbing enrollment, Vaughn has initiated

sweeping changes in the last three years and plans even more innovations which he believes will drive the enrollment along at a comfortable pace.

Since its inception, the MBA program has enjoyed enviable support from the corporate leaders of Tampa, and Vaughn has made it a priority to stay attuned to Tampa's business needs.

Many innovations have been added recently, among them a focus on quality and cross-functional processes, an emphasis on leadership development, managerial skills, and interpersonal relations and cultural sensitivity.

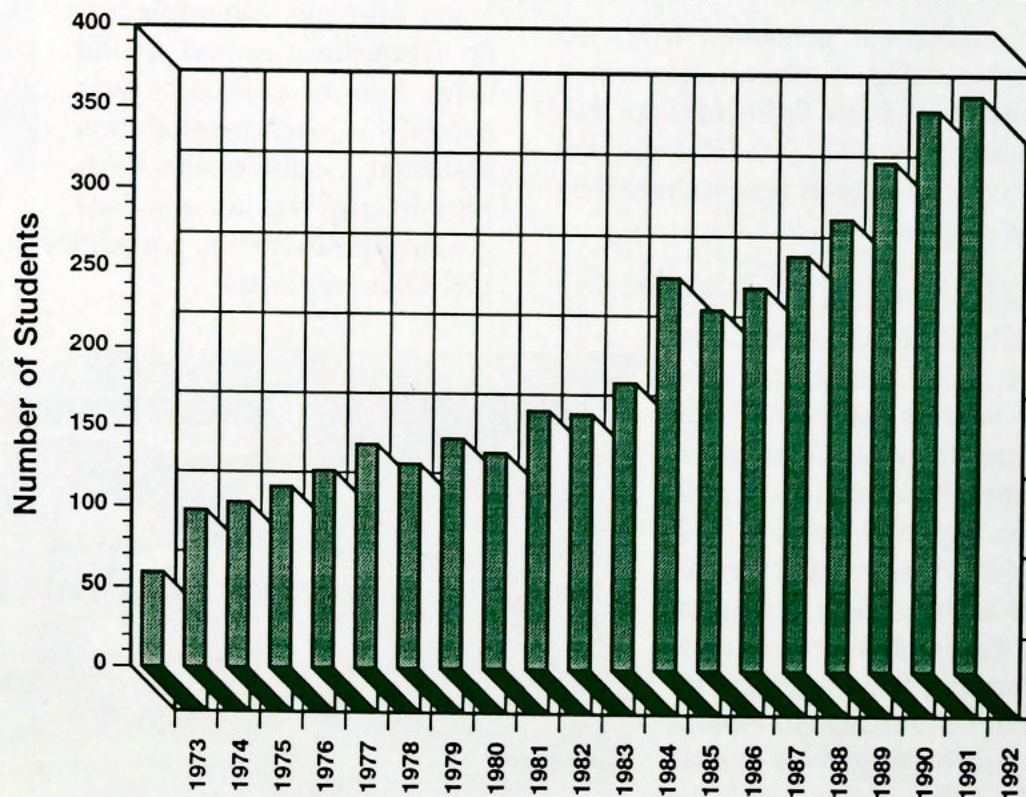
And there's much more to come, say Vaughn and Kraft

Currently, they have initiated a thorough internationalization of the MBA program involving changes in course content, adding specialized student training such as language and cultural immersion, foreign internships and possible foreign travel while emphasizing an applications orientation.

"I think if we to concentrate on providing measurable extraordinary value the program will continue to be in demand," said Vaughn.

UT

20-YEAR MBA PROGRAM ENROLLMENT



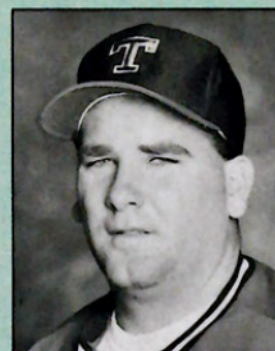
NCAA Baseball Title Caps Spartans' Year

By Gil Swalls
Assistant Athletic Director

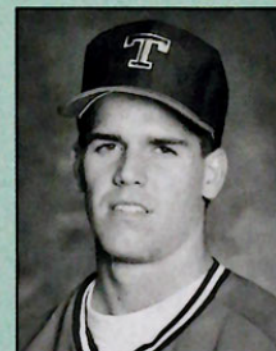
The University of Tampa's reputation and image were enhanced nationwide again with the Spartans' NCAA national championship in baseball and that was just the cap to a year which included two other Top Five finishes and plenty of highlights.



Joey Urso



Matt Hudson



Brian Zalatel

Baseball is No. 1

Coach Lelo Prado is a sure bet to earn national Coach-of-the-Year honors after guiding the Spartans to a 42-19 record and NCAA Championship, the school's first in baseball and fourth overall. UT raced through the Regional and National tournaments undefeated in seven games, including a two-game sweep of top ranked Florida Southern at Lakeland.

Tampa nearly swept individual honors and gained a Region MVP award for outfielder Eric Foster and Championship series MVP trophy for Joey Urso. Pitcher Matt Hudson was named first team All-American while third baseman Brian Zalatel joined Urso on the second team.

The excitement generated from the title has developed into an accelerated movement to obtain lights for Sam Bailey Field as the \$130,000 fund drive is expected to be met in time to light next season's games.

Volleyball is No. 3

Coach Chris Catanach was named AVCA National Coach-of-the-Year for guiding the Lady Spartans to a No. 3 national ranking in the final Div. II poll. Tampa finished with a 38-5 record and was the only team to defeat both national champion West Texas State and runner-up Portland State. After winning the Conference championship and beating rival Florida Southern three times during the

regular season, the Mocs upset the Spartans in the NCAA Regional Final.

Kim Dix became a two-time All-American for the Spartans while Luanne Baldwin was also named All-American.

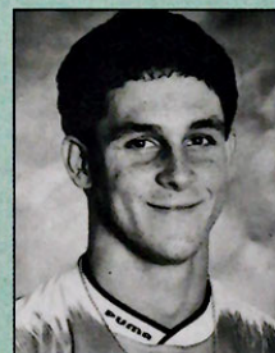
Soccer is No. 5

It came down to a match with Florida Tech which the Spartans fell short, 2-1 in the NCAA South Region Final, as the Panthers went on to win the NCAA Championship and the Spartans to a No. 5 final national ranking.

Under Tom Fitzgerald, Tampa finished at 17-4-1 as Adrian Bush was named 1st Team All-American while Justin Throneburg earned second team honors and later was named the Coaches Association National Goalie-of-the-Year. Throneburg was among four goalkeepers invited to participate in the U.S. Olympic Trials.

Swimming is No. 24

Ann Marie Nanai placed 11th in the 1,650-yard freestyle at the NCAA Championships, good enough to score six points and place the Spartans 24th in the nation. Scott Jones represented the men's team but was thwarted in his effort to score for UT. Coach Ed Brennan says



Adrian Bush



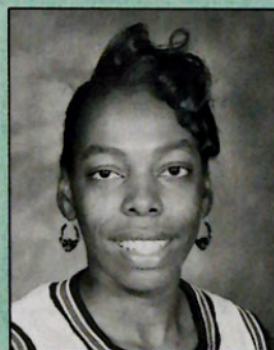
Justin Throneburg

Nanai's performance and this year's recruiting effort signals the UT swim program's return to national rankings.

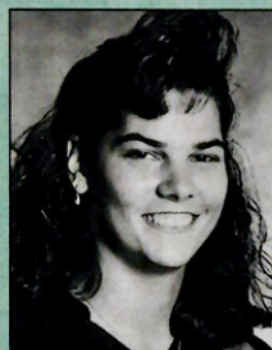
Men's Basketball

After jumping to a school record 14-0 start and No. 5 national ranking, Coach Richard Schmidt's young squad ran into difficulties in the Sunshine State Conference and closed at 19-10, falling below 20 victories for the first time during his nine-year tenure.

The best news is ahead, as Tampa dominated the SSC all-freshmen team with three selections and returns 10 lettermen, including all five starters.



Kim Dix



Luanne Baldwin

S P O R T S W R A P

Women's Basketball

Behind two-sport All-American Kim Dix, Coach Tom Mosca's team tied the school record for victories in posting a 20-9 season. Again, the Spartans dominated the all-freshmen team with three selections, including Tori Lindbeck, who set school records for three-point shooting and was named a freshman All-American.

Softball

Michelle Lamont's club also established a school record for victories, posting a 25-18 mark, including an all time best second place finish in the SSC at 18-6. Tampa earned a four-game split with top ranked Florida Southern. Pitcher Paula Proch tossed three no-hitters while pitcher Bridget Boswell advanced the farthest among UT's honor students, earning GTE/CoSIDA Academic all-Region status.

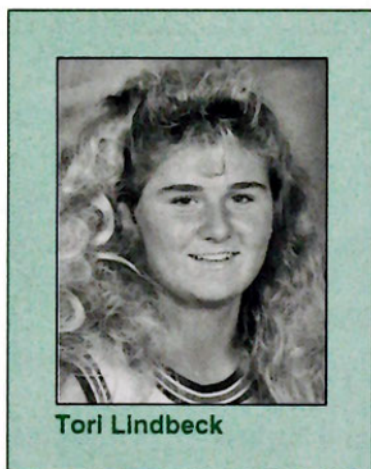
Rowing

Three crews qualified for the Dad Vail Regatta (small college nationals) under the mentorship of coach Bill Dunlap. Expecting to medal in all three races, the Spartans were disappointed as one team failed to run due to injuries while the other two were upset in qualifying heats.

The men's lightweight four had entered the regatta with just one defeat from the entire fall and spring seasons.

Golf

Dolph Roder placed second at the NCAA Southeast Regional and was invited to participate in the National Championship Tournament but elected to turn pro. USF's Rick Christie was hired this summer to take over the golf team which placed third in the SSC. Christie concluded a 20-year career as USF's course assistant manager.



Tori Lindbeck

Cross Country

The men's team placed eighth and the women 11th in the South Region meet. Linda Cassella and Gunnar Svendsen were named to the all-Conference teams. Coach Peter Brust is hopeful that both squads will emerge from the middle of the conference with a deeper squad this season.

Tennis

Both the women's (8-9) and men's (2-14) tennis teams showed improvement under Gregg Gruhl, who has brought organization and instruction to a predominately walk-on program. Linda

Cassella posted an 11-6 dual record at No. 1 singles while Raph Hurwitz was the top winner among the men.

Summary

UT won its fourth straight SSC all-sports trophy, this time by the women's teams and for overall points by men and women. The volleyball team won its SSC title while four other teams placed second in league standings.

Three teams placed among the top five nationally. There were two coach-of-the-year awards, four various types of player-of-the-year awards, nine All-America selections, 11 all-region honorees, 35 all-SSC players, a league-leading 22 Conference players-of-the-week and 17 Commissioner's Honor Roll Student/Athletes, including seven Academic All-America nominees providing one academic all-region selection.

Meanwhile, the Sword & Shield Club met its fundraising goal for the first time in four years and a major drive to fund new lighting for Sam Bailey field is near completion.

"This has been an exceptional year and certainly an exciting one from start to finish," said athletic director Hindman Wall. "You might think it would be difficult to top, but all of our coaches have enjoyed excellent recruiting while our support base continues to grow despite difficult economic times for everyone. This program will continue to get better and do the unimaginable." **UT**

SAVE, SAVE, SAVE with the UT SPARTAN SPORTS PASS!

Your ticket to UT's best home games in men's and women's basketball, soccer, and volleyball. You can be a season ticket holder in five UT sports and pay only for games you want to see. For only \$60, you receive 25 admissions to any regular season home game. That's 25 of UT's best home games in five sports for you, or take 24 of your closest friends to UT's best home game of the year, or take your family of five to any five games, or ... you get the idea!

Best of all, it's a discount off our lowest regular single game general admission prices. Just fill in the application below and return. Be sure to display your Spartan bumper sticker so everyone knows you're a UT supporter.

_____ Spartan Sports Pass, any 25 admissions (x) \$60 = _____

_____ Check here if you desire Sword & Shield Club information. The Sword & Shield Club generates scholarship funds for student athletes and provides many benefits to members.

Name _____

Address _____

Signature _____

City/Zip _____

Home Phone _____

Bus. Phone _____

MasterCard ☐ Visa ☐ No. _____

Exp. _____

Make check payable to: University of Tampa Athletics

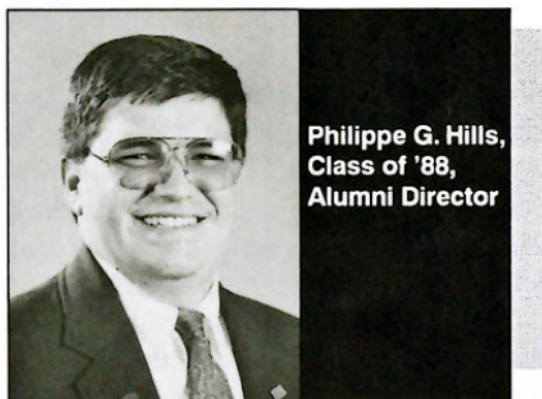
Mail to: Athletic Department
The University of Tampa
401 W. Kennedy Blvd. Box 1
Tampa, FL 33606-1490

FOR SCHEDULE AND TICKET INFORMATION, CALL (813)253-6240.

Muezzin



A L U M N I N E W S



Another summer has closed and the University once again is filled with the bustle of new students. The class of 1996 began classes on Sept. 1. It is amazing how quickly they have settled into their UT experience. But this summer was one like UT alumni have never seen before. Hopefully, it is the beginning of many summers of exciting events around the nation.

We have spirited alumni chapters springing up all around the nation. Our New York Metro Alumni Chapter had a memorable night aboard the DeWitt Clinton cruise ship as she sailed around Manhattan and out to the Statue of Liberty on July 10th. It was a beautiful New York evening and there was lots of excitement, dancing and other traditional UT happenings.

The talk of all alumni this summer has been our great National Champion baseball team. The pride and honor have not yet started to dull, and I was honored to provide the news to anyone who had not yet heard. By the way, UT National Baseball Champion T-Shirts are available by calling the UT Bookstore. Prices range from \$10-\$24.

A smaller group of alumni attended the July 12 New York Yankees v. Seattle

Mariners baseball game. We were treated to watch UT alumnus Tino Martinez '89 play first base for the Mariners and go 2-3 with an RBI. I guess he was lucky that Sam Militello '91 wasn't pitching for the Yankees (see class notes). Thanks to Tino for stopping by and saying "hi" to the group before the game.

Alumni in our South Florida Chapter have really gained great momentum as well. Those of you in that area who have not joined in on the events are missing a lot of fun. The group's leadership has taken the reins and begun to plan events for this fall and next spring. I look forward to seeing big crowds at those events as people realize the opportunity to see their UT friends. The talk at the last get-together was about the UT weekend cruise. Watch your mail for information; that looks to be one unforgettable weekend.

Oh yes Chicago, Chicago! The alumni in the Windy City know how to do things right. The members of the chapter that saw the Cubs play the Mets on Aug. 8 at Wrigley Field had the biggest thrill of the summer. Score tied, bottom of the ninth, men on first and third when Mark Grace hit a sacrifice fly to left field to win the game. Wrigley went crazy and so did our alumni.

And we're now on the verge of forming a chapter in Atlanta. July 4th weekend saw an organizing committee come together and begin the process. Alumni in Atlanta will soon receive information and volunteer forms to start the process of organizing the chapter. Who knows what might be in store for a chapter in a city that will host the next summer Olympics.

Alumni at every event this summer had a time to remember, a time to reflect, and a time to enjoy what it is to be a part of UT.

The National Alumni Association will continue to host events throughout the country. In conjunction with the admissions office, we will be hosting events with new and perspective students and will ask many of you to attend and assist with plans and events. If you choose not to join us, you are truly missing out on a special experience, an experience which is part of your UT life, an experience that you deserve as alumni of our university.

Tampa Bay, we have not forgotten you either. Tampa Alpha, our venerable local chapter with the richest history of all, will once again schedule its series of events this fall and spring, not the least of which is the Annual Raffle Night with its \$10,000 grand prize.

The raffle will be held on Nov. 21, in UT's Fletcher Lounge. Tickets are available to all interested persons (you do not have to be present to win). Ticket Cost is \$100 per chance. This year, don't be surprised if some special new twists are added to the event that will combine the tradition with a night like you have never seen before. Call the Alumni Office if you would like more information.

Finally, I would be remiss if I did not address the thrill in Tampa Bay about the prospect of the San Francisco Giants coming this Bay Area in 1993. With UT's connections to Major League Baseball now and in the past (Tino Martinez, Sam Militello, Lou Piniella, Mike Ilitch, Tony LaRussa et. al.) you know that we will flock to see the Tampa Bay Giants play.

The excitement of UT alumni continues to build, I hope that you will be a part of it. **UT**

C L A S S N O T E S

'49

W. J. Priff is retired and living in Boynton Beach, FL. He recently attended a South Florida Alumni Chapter event and met with UT President David Ruffer.

'53

Dale S. Kleinfelder retired from Southern Bell after 20 years with the company as an outside plant engineer. He and his wife spend their time between their home in Spring Hill, FL, and their beach house in Madeira Beach, FL.

'56

Arthur E. Blau is owner and President of All-Pro Gas in

Ft. Lauderdale, Florida. Arthur and his wife, Linda, have three children and live in Ft. Lauderdale.

'64

Catherine T. Scott is a retired school teacher and lives in Hernando, FL. Catherine's husband, John, died on Nov. 1, 1990. She works as a volunteer for Hospice of Citrus County.

'67

David Maguire recently contacted the Alumni Office to get back in touch with his alma mater after some years. David is living in Bay Shore, NY.

'68 REUNION

FEBRUARY 12-14, 1993

Robert Spence is Vice President & Business Development Officer for American Bank. He and his wife, Jane, have two children. They live in Ft. Lauderdale, FL.

Frank J. Johnson was recognized in March as an outstanding technology teacher by the International Technology Education Association. Frank is Department Head at Sligh Junior High School in Tampa. He received the award at the Association's 1992 Conference in Minneapolis, MN. Frank, his wife, Darlene, and two children, Frank, Jr., and Janette, live in the Tampa area.

'73 REUNION

FEBRUARY 12-14, 1993

John Pietrucha has completed a bachelors degree in Mechanical Engineering from Fairleigh Dickinson University. John is employed as the supervisor of the computer-aided drafting department at The Permutt Co., Inc., a subsidiary of Zurn Industries.

'75

Paul Louis Sollazzo has been named head women's basketball coach at Hillsborough Community College. This summer, his team won the under-18 AAU State Basketball Championship. Paul lives in Tampa with his wife, Terry, and two sons, Ryan and Adam. Paul also teaches P.E. at Lopez Elementary School.

Peter H. Simon is the Sports Information Director at the University of San Francisco.

He is working on his masters in Sports Administration while at the University. Peter, his wife, Vicky, and son, Joel, live in Millbrae, CA.

Maj. Paul F. Stewart recently graduated from the Air Command & Staff College and has been reassigned to the Joint Tactical C3 Agency, Pentagon. Paul and his wife, Georgina, live in Herndon, VA.

'78 REUNION

FEBRUARY 12-14, 1993

Lester W. Langford is Chief of Police at Cherry Hills Village in Colorado. Lester assumed this position on Jan. 1, 1992.

'79

Richard Vidal is an Assistant Principal with the Dade County Public School System. Richard and his wife, Maria, live in Hialeah, FL with their daughter, Lydia Theresa (12).

Capt. Odin F. Leberman, USMC, recently deployed to the Mediterranean with the 25th Marine Expeditionary Unit. Odin is based at Camp Lejeune, NC.

Patrick V. Simon and Lillian (Pauchey) Simon have moved with their two children, Lindsay and Ryan, to Ft. Leavenworth, KS. Pat was recently promoted to Major in the U.S. Army after receiving his Masters degree in Management. Pat will be attending the Command and General Staff College while at Ft. Leavenworth.

Continued on Page 10 . . .

STAR QUALITY

ART • POETRY • FICTION
ESSAYS • TRANSLATIONS • CONVERSATIONS

Tampa Review

New Art, Writing
and Ideas from Florida
and the World

Photo by Timothy Kennedy
from Tampa Review 4



Order Form

- Please send me the current issue of *Tampa Review* for \$5.95.
- Please enter my subscription for the next year for \$10.
- Please send me details about becoming a donor-sponsor of *Tampa Review*.

Name _____

Address _____

City _____ State _____ Zip _____

Return this form with a check, payable to:

Tampa Review • Box 19F • The University of Tampa • Tampa, FL 33606-1490

C L A S S N O T E S

Ronnie Fuerst has completed a residency in Emergency Medicine and a fellowship in Pediatric Medicine. Ronnie is currently serving as an Assistant Professor of Surgery at the University of Florida College of Medicine. Ronnie and his wife, Linda, live in Gainesville, FL.

'80

Daniel J. Lucas recently graduated from Golden Gate University with a Masters degree in Public Administration and has been promoted to Sergeant with the Tampa Police Department. Daniel lives in Tampa.

Anthony R. Vanchieri is the senior operations research mathematician for the Federal Aviation Administration's Office of Air Traffic System Effectiveness in Washington, D.C. Tony has worked for the FAA since 1990 after leaving the U.S.

Marine Corps after 15 years. While in the marines, Tony rose to the rank of Captain and earned his naval aviator wings. Tony earned his Master's from U.S.C. and is currently working on a Ph.D. from George Mason University. Tony, his wife, Valerie, and his daughter, Melina, live in Alexandria, VA. Tony encourages fellow alumni to contact him at his office whenever they are in D.C. at (202) 267-8036.

'81

Louis Bullard has recently been accepted for admission to Antioch New England Graduate School in Keene, NH. Louis will pursue a Master of Education degree in Elementary/Early Childhood Education.

'83 REUNION
FEBRUARY 12-14, 1993

G. Jeanne Giles received her Masters of Education in agency counseling for Lynchburg College in Virginia.

Ruth Pangallo Myles is a Laboratory Manager for VOC Analytical in Ft. Lauderdale, FL. She and her husband, Mark, live in Ft. Lauderdale.

Bryan Shuler has been awarded a Fulbright Scholarship from the prestigious world-wide Fulbright International Program. Bryan received his masters degree in music composition this summer from the University of South Florida. He will use the scholarship to study as a composer-in-residence from October 1992 to June 1993 at the National Dance Ensemble for the Institute of African Studies at the University of Ghana in Legon, Ghana.

Richard Jacovich and Angela (Kruger) Jacovich have celebrated their 5th wedding anniversary. Rich and Angela have two sons, Jared (2) and Ryan (1). Rich is an

accountant for Bozzuto's Inc. in Cheshire, CT, and Angela is a Personnel Director for the Hartford Insurance Group in Southington, CT.

Vicky Wilson works for Presbyterian Home Care in Charlotte, NC.

John M. Koivisto and Elizabeth Barnett Koivisto have recently moved from Ft. Gordon, GA to Fayetteville, NC. John is currently serving as an officer in the U.S. Army.

'84

Joe Furmanek has accepted a position with Central Florida Coca-Cola Bottling Company as Senior Financial Analyst. Joe lives in Tampa.

Jenny Martin Dey and Greg Dey '87 announce the birth of their second child, Joseph Richard, on June 5, 1992. Greg is a CPA with Gregory, Sharer & Stuart in St. Petersburg, FL. Jenny, Greg, Stephanie (2), and Joseph live in St. Pete.

Camille Burgess married Matthew Jowanna on June 20, 1992. Camille and Matthew will be living in Plantation, FL.

'85

Jena Swindle Mier married Christopher Mier on March 14. Jena is Vice President of the Phoenix Environmental Group, an environmental consulting firm in Tallahassee, FL.

Bob Carnaroli recently graduated from the Univer-

Use this form to notify the Alumni Relations Office of your change of address.

ALUMNI

Alumni Relations Office • Box H
The University of Tampa
Tampa, FL 33606-1490

Name _____

Social Security No. _____
(To verify records only)

Company Name _____

Address _____

Please change my/our address on your records. (Please include mailing label.)

Old Address _____

Class Year

Home Telephone _____

Work Telephone _____

Occupation _____

Spouses's Name _____

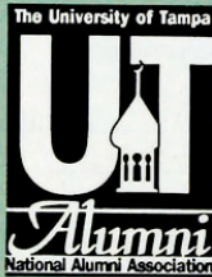
UT Class Year

New Address _____

The University of Tampa is vitally interested in the progress of its alumni. Use this form to keep the Alumni Relations Office informed.

Addition to family _____
Child's Name Birth Date

Additional news for Class Notes _____



C L A S S N O T E S

sity of Notre Dame with a Masters in Administration. He and his wife, Debu, are expecting a baby in December.

Cece Stepniewski Feathergill married William Feathergill. The couple have a home on Davis Islands, Tampa. Cece is an Environmental Supervisor with the Department of Environmental Regulation and William is a Private Investigator.

Carol Moses McTamney was married to Lt. Col. John McTamney in March 1991. Carol graduated from Widner University School of Law in May 1992 and is now serving as a Captain in the Delaware Air National Guard after five years in the U.S.A.F.

'86

Lt. Phillip C. Stephens recently returned from a six-month deployment aboard the USS Antietam. During the mission Phillip visited Japan, Hong Kong, Singapore, Malaysia, Thailand, Brunei, Australia, and Fiji.

Jacqueline Tumelty is completing her Masters of Arts degree in Counselor Education the University of South Florida. She is Director of Employment Counseling Services for The National Career Institute in Tampa.

Dr. Kerry Jackson graduated with honors from the University of Florida College of Veterinary Medicine in May 1992. Kerry holds a Masters Degree from UF as well. She works for Community Animal clinic and lives in Palm Coast, FL.

'87

Emily Boyer Cecchine and **Gary Cecchine '90** are stationed in Hawaii with the 25th Infantry Division (Light). Gary serves as the Environmental Officer and has deployed to Asia, and the Pacific, as well as working with a Disaster Relief Team in Somoa. Emily is an archaeologist for the Bishop Museum of Hawaii and is working on an ancient dig site on Oahu.

Carl A. Karr, M.D. has completed his internship and is now an in-house staff pediatric resident for BAMC Hospital in San Antonio, TX. Carl and his wife, Kerrie, live in the San Antonio area.

'88

REUNION FEBRUARY 12-14, 1993
Jill S. Smerling is currently attending the University of Miami School of Law.

Deborah Zarcone Kramer and her husband, Peter, announce the birth of their first child, Morgan Rose, on June 7, 1992. Deborah and Peter live in Tampa.

Wayne Fuller and his wife, Leslie, announce the birth of their first child, Austin Tyler Allen Fuller, on March 12, 1992. Wayne recently graduated from the University of South Florida Medical School and has begun a residency in Anesthesiology at USF Community Hospital.

Jeff Leonard and **Sara Huntsman** were married on Jan. 4, 1992. Jeff is a professional golfer and Sara works as a healthcare fundraiser with the Lakeland Regional

Medical Center Foundation. Jeff and Sara live in Tampa.

Susan Parker Poulakis is a loan officer with K-25 Federal Credit Union in Oak Ridge, TN. She and her Husband, Jon, live in Knoxville, TN.

Chritine Ahrens Greene was married to Scott Greene on Dec. 28, 1991. Christine and Scott live in their new home in Shrewsbury, MA. Christine is one of our New England alumni who will be working to develop an alumni chapter in the New England area.

'89

Bill Denne lives in West Palm Beach, FL and works for TrafficCopters as a Chief Pilot making daily traffic updates for a local radio station.

Elliot Smerling is President and CEO of Smerling Financial Group, Inc. He lives in Ft. Lauderdale, FL.

Richard Null, MBA '89, is an adjunct professor at UT and was accepted by Florida State University for Fall 1992 to pursue his Ph.D. in economics.

Stephen W. Preston has recently returned from Germany and is attending Military Intelligence Advanced Course at Ft. Huachuca, AZ.

Ronald Bowers teaches fifth grade in the Chicago Metropolitan Area. He has recently built a log cabin home in Wisconsin and enjoys fishing and hunting in the summer while teaching tennis.

Philip Rosing currently lives in Atlanta, GA where he works as Vice President for Rosing Painting & Wall-covering.

Brian Bowman announces his engagement to Helen Haupt. Helen is a Wake Forest and UNC alumna. The wedding is planned for spring 1993. Brian lives in Durham, NC.

'90

Donald "Rick" Bridges is a corporate accountant with The Sports Authority. Rick lives in Coral Springs, FL.

Kristy Strickland is at the University of Tennessee, Knoxville, pursuing a Ph.D. in History. Kristy announces her engagement to Doug Byrd of Maryville, TN. Doug and Kristy plan a June 1993 wedding in Tampa.

Sandy Flores has been awarded a full scholarship from the V.A. Health Professional Scholarship program to pursue her Master Degree in Gerontological Nursing at the University of South Florida College of Nursing.

Cary M. Bogue recently returned from a three-week trip to Thailand, Singapore, and Indonesia with UT Basketball Coach Richard Schmidt to search for exotic animals. Cary has also accepted a new job with Future Steps in Sarasota, FL as an Addiction Counselor for pregnant women with substance abuse problems.

Continued on Page 12 . . .

C L A S S N O T E S

Steven Baker is a managerial associate at Barnett Bank. He married Vanessa Moon on March 28, 1992 in Dallas, TX. The couple honeymooned in the Caymen Islands. Steven and Vanessa live in Sarasota, FL.

Hoang Van Bui received the \$3,000 "Best Show Award" for his sculpture at the 1992 Nestea Art and Music Festival. Hoang is enrolled at the University of Georgia where he is completing the requirements for a Master of Fine Arts degree in sculpture.

Micheal DePiro has been assigned to Ft. Lewis, WA as executive officer, B Battery, 4-7ADA with the US Army. Mike lives in Tacoma, WA.

Linda M. Register received a Master of Science degree in Psychology/Mental Health Nursing at the University of South Florida in the Summer of 1992. She has also been granted her ARNP license by the Florida State Department of Regulations.

'91

Sam Militello pitched his first Major League Game for the New York Yankees on Sunday, Aug. 9 against the Boston Red Sox. Sam pitched a one hitter through seven innings before a rain delay caused him to be pulled from the game. The Yankees won, thus giving Sam his first Major League win.

Tim Vannatta is currently attending Law School at the University of Mississippi.

Gregory Remsky is Vice President of Finance for Remedco, Inc. Greg lives in Boca Raton, FL.

Vicki Dominick will attend Florida State University this fall to pursue her Masters Degree in Higher Education.

Paul Squitieri, Jr. is an account executive with the Chase Manhattan Bank in New York City. Paul lives in Old Tappan, NJ.

Michael Gelfand works as a therapist in the Mental Health area. Mike will begin a dual degree Master program in Social Work and law this fall at Loyola University in Chicago.

William R. Pasquarella, Jr. works as a Marketing Representative for Arthur Andersen & Co.'s Tax Technology Group in Sarasota, FL. Bill is also pursuing his MBA in International Marketing.

John Cameron is a Computer Programmer for Qualifacts Systems in Seminole FL. He currently lives in Clearwater.

Charles Bruce Ford II married Cecelia Fowler on Aug 1, 1992. He works as a Quality Assurance Verifier at Attorney's Title Insurance Fund, Inc. in Clearwater, FL.

'92

Kevin A. Strange is working with KPMG Pea Marwick in Boston, MA. as a Management Consultant Kevin will begin Military Police School at Fort McClellan, AL in September

Rob Doll has accepted a position with Copyco as a sales consultant in Deerfield Beach, FL. Rob lives in Ft. Lauderdale.

Nigel Kirwan is a sales representative with the Tampa Bay Lightning Hockey team. The Lightning is Tampa's first NHL team and begins play in the 1992-93 season. Alumni interested in purchasing tickets can contact Nigel at Lightning Headquarters.

Aaron Todd Stuart is an account representative with MetLife Insurance Co. Aaron is at MetLife in Tampa and does much work in the New York City area. He lives in Safety Harbor, FL.

Angela Gates is currently working on her Doctorate degree at the University of Colorado - Denver in the area of Industrial/Organizational Psychology. She works for a corporate real estate agency in Denver.

Sharon M. Leibrock and Moin Marashi '91 were married on May 10, 1992.

Erin Euler Boone was married to Kenneth Boone, Jr. on May 16, 1992. Erin works for IBM as a Supplemental Programmer. She and Ken live in Tampa.

Deceased

Dr. M.C. Rhodes
David Pinholster '42
Donald S. Munn '51
Grover L. Woods '70
Eric Wheeler '84

UT DEVELOPING AN ALUMNI DIRECTORY

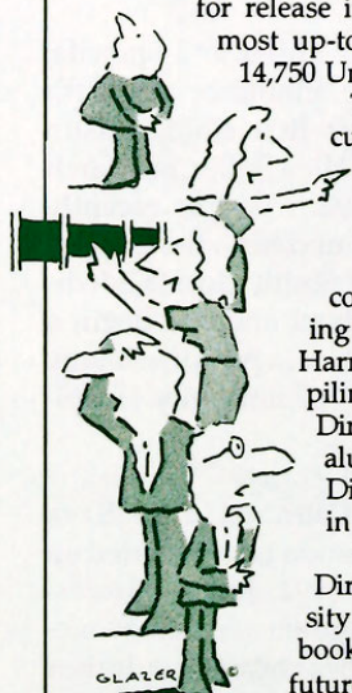
Finding a former classmate can be just like looking for the proverbial "needle in a haystack." But not anymore. Soon an impressive directory of our great alumni will be available to help you locate your old friends.

The new University of Tampa Alumni Directory, scheduled for release in August/September 1993, will be the most up-to-date and complete reference on over 14,750 University of Tampa alumni compiled.

This comprehensive volume will include current name, address and phone number, academic data, plus business information (if applicable), bound into a classic, library-quality edition.

The Alumni Office/Association has contracted the Bernard C. Harris Publishing Company, Inc. to produce our Directory. Harris will soon begin researching and compiling the information to be printed in the Directory by mailing a questionnaire to each alumni. If you prefer not to be listed in the Directory, please contact the Alumni Office in writing as soon as possible.

The new University of Tampa Alumni Directory will soon make finding a University of Tampa alumnus as easy as opening a book. Look for more details on the project in future issues.



C O N T R I B U T O R S

The University of Tampa recognizes through this listing, and those that follow, the invaluable contributions of individuals, corporations, organizations and foundations to the concept and importance of private liberal-arts education. Without this steadfast and loyal commitment from the community during the

1991-92 fund-raising year, the University could not continue to grow and prosper.

Donors named in the following lists contributed to The University of Tampa during the period of June 1, 1991 through May 31, 1992. Matching gifts received after that date will be credited to the fiscal year 1992-93.

Every attempt has been made to ensure the accuracy and completeness of these lists. However, error is possible and omissions sometimes occur. We apologize for any errors and/or omissions. Please contact the Office of Institutional Advancement at (813) 253-6220 to inform us of any inaccuracies.

1991-92 PRESIDENT'S COUNCIL

The President's Council is the most esteemed gift society of The University of Tampa, honoring annual donors of \$10,000 or more.

Mr. and Mrs. Alfred S. Austin
The Chiselers, Inc.
Conn Memorial Foundation, Inc.
Florida Department of State/Bureau of Historic Preservation
Florida Independent College Fund
GTE Foundation
Mr. and Mrs. John L. Harrell
Estate of Robert D. Hill
Max H. Hollingsworth
Mr. and Mrs. Robert A. Jaeb

Jones Intercable, Inc.
Estate of Bertha Jordan
Kimmins Environmental Service Corporation
Professor Emeritus John H. Lindenmeyer
Merchants Association of Florida, Inc./Mr. and Mrs. Richard C. Swirbul
Mr. and Mrs. J. Ross Parker
The Saunders Foundation

Sun Bank of Tampa Bay/George W. Koehn
Tampa Electric Company
Tampa Greyhound Track
The Tampa Tribune/H. Doyle Harvill
The University of Tampa Class of 1992
James W. Walter
Louise W. White
Estate of Rose Williams
W.R.B. Enterprises, Inc./G. Robert Blanchard

1991-92 MINARET SOCIETY

Named in honor of the minarets atop H.B. Plant Hall, the Minaret Society recognizes alumni and friends who annually contribute between \$1,000 and \$9,999 to The University of Tampa. Donors to athletics are members of Sword & Shield.

GOLD CRESCENT MEMBERS (\$5,000-\$9,999)

Girard F. Anderson
Mr. and Mrs. Thomas A. Cooper
A. D. Davis Family/WD Charities, Inc.
J. E. Davis/WD Charities, Inc.
Mr. and Mrs. James L. Ferman, Sr.
First Florida Bank, N.A.
Hillsborough River Realty Corp./John J. Avlon
George W. Jenkins Foundation, Inc.
Mr. and Mrs. Fred D. Learey
NationsBank/R. Eugene Taylor
Paul T. and Rita M. Nolan
Mr. and Mrs. R. James Robbins
William G. & Marie Selby Foundation
William L. and Elvira Stoeltzing

SILVER CRESCENT MEMBERS (\$1,000-\$4,999)

Payton F. Adams
Mr. and Mrs. John L. Adcock

Thomas D. Arthur/Havatampa Incorporated
Mr. and Mrs. W. DeHart Ayala
Lawrence J. Babbitt
L. Lowry Baldwin
The Bank Of Tampa
Bay Golf Cart
Best Termite & Pest Control
William B. Blackburn
William D. Blizzard, Jr.
Briggs Industries, Inc.
Caliana Foundation
Bruce and Elizabeth Carp
Mr. and Mrs. John B. Caswell
W. Scott Christopher/Tampa New Auto Dealers Association
Frank G. Cisneros/Marman U.S.A., Inc.
Alvia R. Cook
Robert W. Cook
Coopers & Lybrand/James H. Maxwell, Jr.

Mr. and Mrs. Thomas G. Creed
Critikon, Inc.
Mr. and Mrs. William M. Crosby
Peter Dartley
Mr. and Mrs. Jeffrey M. Davidson
Charles M. Davis, Jr.
Mr. and Mrs. Sam F. Davis
Dr. and Mrs. David M. Delo
Deluxe Corporation Foundation
David and Linda Devine
Mr. and Mrs. Robert H. Dewey, III
Dr. and Mrs. Stephen F. Dickey
Mr. and Mrs. Jerry D. Dingle
Mr. and Mrs. Richard J. Dobkin
Nancy V. Downey
Mr. and Mrs. Daniel M. Doyle
Dr. and Mrs. Garth R. Drewry
Mr. and Mrs. David L. Dunkel
Mr. and Mrs. William F. Ebsary
Anonymous

Continued on Page 14 . . .

C O N T R I B U T O R S

Pamela S. Erb
Mr. and Mrs. Hilliard M. Eure, III /
KPMG Peat Marwick
Thomas M. Evans/Frame
Fashions, Inc.
Anonymous
Mr. and Mrs. James L. Ferman, Jr.
First United Methodist Church
Florida Steel Corporation
Foundation, Inc.
Nancy T. Ford
The Free Press Publishing Company
Fassil Gabremariam
Steven and Virginia Galagan
Mr. and Mrs. John F. Germany
Leonard H. Gilbert/Carlton, Fields, Ward,
Emmanuel, Smith & Cutler, P.A.
Mr. and Mrs. William A. Gillen
Grace G. Giunta
Greater Tampa Chamber of
Commerce
Mr. and Mrs. Randall F. Greene
Dan and Barbara Gura
Thomas Hall
Melvin J. Hancock, Jr./Hancock's
Carpet Service
Mr. and Mrs. George E. Hanselman
C. S. "Stan" Harrell/Pharmacy
Management Services, Inc.
Robert A. Hays, Jr.
Mr. and Mrs. Syd N. Heaton
Thomas J. and Louisa Ivanova
Hegarty
Mr. and Mrs. Aaron W. Hendry
Lee H. Hill, Jr./Hill-Donnelly
Corporation
Lee H. Hill, III/Hill-Donnelly
Corporation
Harry M. Hobbs
Margaret D. Hobbs
Mr. and Mrs. Vincent A. Hoover
Col. and Mrs. Joseph W. House
Mr. and Mrs. Carlisle Hutchinson
Kenneth E. Hyatt
Pamela S. Jordan
Erwin I. Katz
Mr. and Mrs. Perry O. Keene, Jr.
Kris Douglas Kelley

1991-92 MINARET SOCIETY

Continued from Page 13

Mr. and Mrs. James M. Kelly
Elizabeth Kercher
Mr. and Mrs. David C. G. Kerr
Sophie T. Kurtz
Mr. and Mrs. Jan M. Larson
Michael J. Leding, Jr.
Carol J. Lingerfelt
John P. Lowth, III
David J. Lubin, M.D.
Michael D. Malfitano
Mr. and Mrs. Bert T. Martin, Jr.
Dr. and Mrs. Alfred S. Massam
J. Larry Massingill/The Elmer J.
Krauss Organization
Mary G. McCloskey
Metropolitan Life Insurance
Company/Rudolph Michaud
Mr. and Mrs. R. David Miller
Walter P. Moore & Associates, Inc.
Mr. and Mrs. Harris H. Mullen
Mr. and Mrs. Vincent J. Naimoli
Harold Nosti
Mr. and Mrs. Herman Oellerich/
Mathews Corporation
Mr. and Mrs. John K. Olson
Lester K. and Yette Brooks Olson
Mr. and Mrs. Solon F. O'Neal, Jr.
Mr. and Mrs. Michael D. Osterhout
Mary E. Parker Foundation
Lois W. Pauchey
Henry Bradley Plant Memorial Fund
The Polish Heritage Foundation
Scholarship Fund
Mr. and Mrs. Fred E. Pollock
Marc and Donna Popovich
Dr. and Mrs. Dennis F. Pupello
Margaret Reading Ragg
Samuel J. Rampello
Mr. and Mrs. Neil Rauenhorst
Mr. and Mrs. William W. Read
Allen N. and Vivian C. Reeves
Mr. and Mrs. Stephen M. Richards
Lance Ringhaver
Mr. and Mrs. Austin Rising

Carmen E. Rodriguez
Jack and Judy Rodriguez
Norma C. Roth
Dr. and Mrs. David G. Ruffer
Shirley A. Ryals
Mr. and Mrs. Bruce A. Samson
Shirley McKay Savage
Robert E. Scott
Mr. & Mrs. T. Terrell Sessums
Mr. & Mrs. Robert R. Sharp
Alex A. Sink
L. Garry Smith, Jr.
Dr. Frederick W. Spaulding
Helen M. Spaulding
Mr. & Mrs. William E. Starkey
Joan W. Stein
Mr. and Mrs. Joseph T. Steuer
Chris T. Sullivan
Mr. and Mrs. David M. Sykes
TECO Energy, Inc./Alan D. Oak
Tampa Alpha Chapter/University of
Tampa Alumni Association
Tampa Bay Business Journal/John
C. Beddow
Tampa Jai-Alai
Mr. and Mrs. Thomas E. Taylor
Dorothy Thomas Foundation, Inc./
Mr. and Mrs. Michael Thomas
Rick and Sandy Thomas
Mr. and Mrs. William G. Thomas, Jr.
Mr. and Mrs. J. Thomas Touchton
Dr. Israel Tribble, Jr.
Jack and Ruth Turbeville
UPS Foundation/FL Independent
College Fund
University of Tampa Board of Fellows
University of Tampa Women's Club
Mr. and Mrs. Thomas A. Valenti
Dr. and Mrs. Ronald L. Vaughn
Sylvia Corral Vega
Mr. and Mrs. Theodore E. Wade
Laura Waller
James W. and Celeste Whitehead
Dr. Byron G. Wilson
Michael Winner
Barbara M. Yadley
Alvin P. and Mary Ann Yorkunas
Gwynne A. Young
Joe and Vilma Zalupski

1991-92 FREDERIC SPAULDING SOCIETY

Named for the founding president of the University, the Frederic Spaulding Society recognizes those alumni and friends who annually contribute between \$100 and \$999.

FREDERIC SPAULDING SOCIETY GOLD (\$500 - \$999)

Christine Klopfer Angel
Colin A. Carter
Mr. and Mrs. Walter M. Cline

Coca-Cola Nestle Refreshments
Dr. and Mrs. Gordon W. Couturier
Gilbert and Loretta DeMeza
William F. Ebsary
Mr. and Mrs. V. L. Elliott

William G. Gieseking, Jr./Pepin
Distributing Co.
Dorothy Talbot Glover
Grant Thornton
Griffin Service Corp.

C O N T R I B U T O R S

GTE Data Services
Elizabeth A. Gavula
Dr. Steven A. Hendrix
Stephen P. and Linda Hess
Philippe G. Hills
James A. and Linda Ingram
Dr. George F. Jackson, III
Mary E. Kenny
Mr. and Mrs. John W. Kercher, III
Michael C. Lauder
Drs. Nicolas G. and Thelma Maragos
Robert A. Monroe
Mark J. Murphy
Daniel M. Norris
Harry F. Oleson
Poe and Associates, Inc.
Jerome D. Quinn
Robert R. Richards
Jerome A. Schine
Frank S. Sinkwich
Terry Jim Smith
South-Co Building Contractors
Dr. Frederick W. Spaulding
Helen M. Spaulding
Sue M. Stewart
Times Publishing Co.
Jose Nededog Unsiog
Wilber G. Van Scoik
Mr. and Mrs. William S. Weprin
Dr. John V. Whitbeck
Mr. and Mrs. Paul L. Whiting
Jack and Carolyn Wilson
YMCA/YWCO of Tampa &
Hillsborough County, Inc.
Richard J. Zeitler

FREDERIC SPAULDING SOCIETY SILVER (\$250 - \$499)

Dr. and Mrs. Braulio Alonso
Charles E. August, Jr.
Charles L. Bagby
Mark John Ball, Jr.
Thomas S. Beck
Douglas J. Bender
John C. Bierley
James S. and Margaret G. Boris
Douglas K. Brooks
J. Stewart Bryan, III
Emanuel Cardinale
Jeffrey S. Carr
Jim R. and Glenda Clare
Van J. Clark
Virginia M. Covington
Drs. Stanley T. and Roseanne
M. Crooke
Lawrence J. Cymment
Wayne R. Davis
Mr. and Mrs. Max Denoff
Mr. and Mrs. Eugene B. Dodson
Craig R. Edwards

Elizabeth Holton Enlow
Garry A. Flowers
GTE Florida-South Area
W. G. Gunnoe
John W. and Mimi Quick Hanna
Bart and Patricia Hartsock
Mr. and Mrs. Lewis H. Hill
Dr. James V. Hillman
Dr. Kenneth L. Jensen
Eric Kaltman
Molly Lawrence/Caspers Co.
Dr. and Mrs. Burton N. Lowe
Mr. and Mrs. John M. Luther
James A. McNulty
Melodee E. McThenia
James R. Mellaci
Robert D. and Judith P. Mohr
Stanley W. Moore
NCNB National Bank of Florida
James P. O'Drobinak
Rick and Sheri Ogorek
Angel Oliva, Sr.
James H. Overton
Michael J. Pacetti
Andrew L. Pink
Steven M. and Diane W. Platau
Dr. and Mrs. William L. Rhey
Michael V. Roberts
Samuel C. Russell
Leslie and Anita K. Scharf
Frederick E. and William "Fritz"
Scholze
Michael Shea
Andrew J. Schroder, III
Mr. and Mrs. James A. Singer
Joseph R. Smith
James B. Strenski/Public
Communications, Inc.
Strobe Studios, Inc.
Liza R. C. Sumulong
James K. and Linda S. Taggart
Tampa Bay Downs, Inc.
Thomas E. Taylor
Mary Jones Tylander
James W. and Tula Carter VerPlanck
Dr. Eric Vlahov
W101-FM Radio/Kris Boyd
H. Glenn Waddell
Ansley and Elaine R. Watson
Mr. and Mrs. M. Alex White
Kenneth T. Williams
Joseph P. Wright

FREDERIC SPAULDING SOCIETY BRONZE (\$100 - \$249)

Rebecca L. Abdoney
Miguel and Lydia M. Acosta
Mr. and Mrs. Bruce W. Adams
Dr. Michael K. Adams
Robert G. Addems

Nancy Alchediak
Carlos J. Alfonso
Judi Almaguer
Martin and Brigitte Hinz Andersen
Carlos A. Araujo
Mr. and Mrs. Charles E. August, Sr.
Paul W. Babikow
Dorothy F. Bachman
Theodore I. Bahn
Mr. and Mrs. Sam M. Bailey
Michelle Barry
Roger W. Baum
The Hon. Robert E. Beach
Susanne Bell
Lee M. and Laura M. Bentley
Howard P. Best, Jr.
Mr. and Mrs. E. F. Bills
Thomas E. Birmingham
Thomas E. Bissonnette
Wallace W. Blackburn
Dr. Earl W. Boatwright, Jr.
Gerald and Gloria Bobier
Robert E. Bodmer
Charles T. and Margaret L. Booth
Dr. Tommy J. Borrell
Peter K. and Connie Bradish
Edgar B. Bradley, Jr.
Martha Powell Brincklow
Mr. and Mrs. Rod Brooker
Douglas K. Brooks
Charles A. Brown
Thomas R. Brown
Larry W. Bryant
William C. Buchanan
Buddy Freddy's/Fred O. Johnson
Joan Griffin Burpee
Robert A. Burwell
John B. Cameron
Wanda Carter
Mike Cartwright
Alton C. and Joyce Carver
F. Chris and Linda H. Catanach
Joseph H. Chambers
Dorothy Chapman-Stewart
E. Ray Charles
Paul S. Charpentier
Mr. and Mrs. Mack T. Christian
Karen Clarke
Clayton Galleries, Inc.
Sgt. Anna M. Cline
Bernard I. Cohen
Richard L. Cohen
Mrs. Sidney Colen
Marlyn R. Cook
Norman D. Cramer
Estella R. Crane
Donald and Elaine M. Crowley
Austin R. Curry

Continued on Page 16 . . .

C O N T R I B U T O R S

G. Maurice Curtis
 Dr. and Mrs. William Cyzewski
 The Hon. and Mrs. Paul W. Danahy, Jr.
 Thomas H. Dankert
 Jan K. Dargel
 Craig A. Davis/Earle Palmer Brown
 Patrick A. Davis
 Winifred G. Davis
 John and Olive K. Deal
 Dr. Vincent H. DeCaprio
 Dennis A. and Elise S. Denoff
 Kathryn S. Denoff
 Kimberly F. DeShong
 Dr. William H. DeVries
 Catherine M. Diedrichsen
 Mel J. DiPietro
 William and Lois K. Dmytryk
 Amy J. Doktor
 Mr. and Mrs. John F. Dolan
 Gilmore A. and Rose Dominguez
 R. Grant Donaldson
 H. Hampton and Charlotte Dunn
 Andrew P. and Angela Dwork
 Drs. Paul B. and Sarah B. Edwards
 Brenda V. Ellison
 Marlon and Johnetta Ellison
 Neal S. Elosge
 Cynthia D. Ezell
 Daniel P. Fagan
 Jeanne Roubay Farris
 Richard B. Faunce
 Dr. and Mrs. Martin Favata
 Drs. Randy and Phyllis Feldman
 Dr. James M. Fesmire
 Howard Fineman
 Mr. and Mrs. Peter Fingar
 Daisy Bowman Fisher
 Dennis M. Fisher
 Dana T. Fogg
 Dr. David B. Ford
 Robert J. Fox
 Martha A. Franco
 Sharlene Anne Francois
 Wyckliffe and Jeanne Ryan Furcron
 George W. Gage, III
 Marty Gall
 Mr. and Mrs. James A. Gallagher
 Mark A. Garcia
 Bob Gelzheiser
 Peter L. Getzler
 John Giancola
 Louise Clayton Giargiari
 William A. Gibson
 Dr. and Mrs. Francis X. Gillen
 Sam A. Guinta
 Ruth H. Gleason
 Global Properties, Inc./J. Infante
 Jose I. and Margie Gonzalez
 Ralph and Cynthia Gonzalez

1991-92 SPAULDING SOCIETY

Continued from Page 15

Marian P. Goodbread
 Mr. and Mrs. John S. Goodson
 George F. Gramling, III
 Jerrold Wirth Gregory
 David A. Greif
 Mr. and Mrs. Edward C. Gross
 Paul Gruber/ERM-South Inc.
 Dr. and Mrs. Richard H. Gude
 Mr. and Mrs. Richard B. Hadlow
 C. Michael and Denise Fenimore
 Halfast
 Marilyn Hamlin
 John M. Hammer, Sr.
 Aubrey Hampton and Susan Hussey
 Mr. and Mrs. Lee Hane
 Dr. Everett M. Harrison
 Gayle G. Hartmann
 John W. Harvey
 Lt. Col. William F. Hawk
 G. Calvin Hayes
 Harry S. Hedges
 Gerard J. Henkel
 Dr. Lazaro A. Hernandez
 Ernest and Barbara Hetrick
 Mr. and Mrs. C. Harold Hippler
 Valerie Smith Hirvela
 Frances Sessions Hoffmann
 Marvin L. Holloway
 Barbara A. Holmes
 Steven W. Holub
 Dr. John I. Hopf
 Theron J. Hotaling
 Daniel B. and Mary H. Howell
 Mr. and Mrs. George B. Howell, III
 Walter R. Hudson
 H. Wayne Huizenga, Jr.
 Prentice and Dolores Draper Hull
 William H. Hutchins
 Robert B. Ilderton
 L. N. Ingram, Jr.
 Kenneth M. and Katherine H. James
 Samuel E. James
 Richard B. Jenkins
 Hal R. Johnson, Jr.
 Tom J. Johnson, Jr.
 Virginia Rhines Jones
 Gilbert W. Joseph
 Royce Kanofsky
 Frances Keating
 Fred H. Kenfield
 Dr. Timothy H. Kennedy
 David A. and Debra S. Kinser
 Albert J. and Skaye Kirk
 Dr. Marcy Kittner
 Joe M. Klay

Ralph D. Klein
 Gary W. and Laura B. Kleinman
 Robert J. Knight
 Christopher S. Knopik
 Michael J. and Judy Kosiba
 Stephen J. Krist
 Dr. and Mrs. Stephen M. Krist
 Ann M. Kulig
 John J. Lamoureux
 Dr. William D. Leith
 S. Dean Lesiak
 Edgel C. Lester, Jr.
 Harold C. Lewis
 Lisa Rosen Lievense
 Dr. Clayton S. Long
 Dennis A. Lopez
 Pedro Lopez
 Mr. and Mrs. Martin Lutzk
 Mr. and Mrs. Edward R. Mack
 Jewel H. MacLear
 Scott K. Mahlum
 Mabel L. Malsbary
 M. S. Mandell
 Mary Catherine Manning
 Michael G. Marino
 Stuart C. Markman
 Lt. Col. William B. Martin
 James J. Martindale
 Cary G. Mason
 Ronald R. McClarin and Lisa
 D. Shetter
 Mr. and Mrs. Hugh O. McCormick
 Susan S. McLain
 David B. McLaughlin
 Ronald A. McMakin
 Thomas K. McMullen
 Susan Anderson Meade
 Anne Marie Meegan
 Robert F. Meredith
 Dr. Paul S. Michaelson
 Cheryl Ellis Middlebrooks
 Gail C. Militello
 Mr. and Mrs. Stephen K. Miller
 Joe D. and Hilda Bethea Mills
 Mr. and Mrs. Ralph P. Millsap
 Carl William Moeller, Jr.
 Nicholas F. Mooney
 Tillman D. Moore
 Dr. and Mrs. William L. Moore
 Lucille G. Morris
 Francis R. Morse
 Kristine Tantsits Moscatello
 Robert J. Muir
 Cmdr. William M. Mulholland
 James B. Murphy, Jr.
 Col. Peter E. Murray
 Muscle Therapy Center/Dr. J. K.
 Johnson and Assoc.
 Rey A. Neville

C O N T R I B U T O R S

Eugene H. and Doris Nichols
 Mark Novak
 Guy W. Otto
 O. Y. Thomas Photography
 Scott R. Pailthrop
 Mary June Spencer Parent
 Thaddeus C. Parker
 Col. Wilmot E. Y. Paxton
 Mr. and Mrs. E. A. Peck
 Michael R. Pender, Jr.
 Mickey and Judy Perlow
 Charles W. Peters
 Dale N. Petersen
 Christina P. Petti-Shahum
 Paul C. Petti
 Thomas A. and Lucile L. Pignataro
 Dr. and Mrs. J. Richard Piper
 Joyce S. Plumley
 Ralph Poetsch
 Rennie K. Poirier
 Paul and Ruth Popp
 Michele L. Prater
 William J. Priff
 Timothy Prugh
 Pulte Home Corp.
 David W. Queen
 Lorraine K. Rafter
 Michaele Taylor Rao
 W. M. Rea
 Cecil B. and Hope F. Reed
 Kenneth J. Reid
 Tammy Rich
 L. David Richardson
 Alton L. Rine
 Dr. Harry S. Robertson
 Gregg B. Robins
 Peter Rodriguez, Jr.

Alan F. Roessler
 Jeffrey J. Rogo
 Mr. and Mrs. Carl David Ross
 Dr. Thomas V. Rossi
 William R. Roth
 Kirby R. and Jean Magi Ryan
 Joseph F. Santoiana
 Moses J. Sawney
 Patrick O. Schneider
 Marcelo J. Sempé
 Jane Pearson Setzer
 David J. Sheehan
 Patricia C. Sheehan
 John H. Sherman, Jr.
 James H. Shimberg
 Mark M. Shine
 Kevin Shukur
 Dr. Helene and Mr. Stuart Silverman
 Bethany Flint Simmons
 Elliot S. Smerling
 Mrs. Benjamin Tillar Smith
 Charles C. Smith
 Cindy Smith
 Dawn M. Smith
 Katherine M. Smith
 Paul H. Smith, Jr.
 Harold and Reva Sprung
 Thomas O. Stelling
 James and Wilanne Stowe
 Mark K. Straley
 Suarez Housing
 Dr. Beresford M. Swan
 Marie I. Swingley
 Frank R. Sylvester
 William P. Taulbee
 Mr. and Mrs. Edward J. Taylor

Mr. and Mrs. Jerome R. Taylor
 Carmelo and Mona Testa-Secca
 Lt.Col. Jeffrey H. Thomason
 Charlotte Anne Thompson
 Douglas J. Titus, Jr.
 Dr. Joanne T. Trekas-Richard
 Trenam Simmons Kemker Scharf
 Barkin Frye & O'Neill, P.A.
 Harry R. and Mary Carmen Trout
 Dr. Michael H. Truscott
 Jeremy S. Tyree
 UT Chapter of the AAUP
 UT Social Work Club
 Dr. Kathryn VanSpanckeren and
 Dr. Stephen Breslow
 Joseph H. Varner
 Robert and Carol Ann Vitols
 James W. Vondrak
 WYNF Radio-95 YNF/Jon Volmer
 Carol C. Walker
 Dr. H. Griffin Walling, Jr.
 David E. Ward, Sr.
 Sterling Wardwell
 Samantha Berg Warren
 Jerry W. and Karen G. Waxberg
 Andrew H. Weinstein
 Mrs. Cyril M. Weissman
 Catherine Hays Wellen
 Frederick S. Werdine
 Ruth Wernick
 Kathleen Wiedemer
 Mrs. Paul Wolfe
 Manuel and Josephine Yglesias
 Lee Zeigler
 Bruce Zelazoski
 Michael C. Zerofsky
 Stephen B. Zimmerman

1991-92 SWORD & SHIELD

Contributors to athletic programs of The University of Tampa are recognized as members of the Sword & Shield Club. With the support of these special donors, Spartan Athletics continues to grow and achieve.

SWORD & SHIELD DIAMOND (\$1,000 and Above)

Mr. and Mrs. John L. Adcock
 Air Flite Rent-A-Car
 W. Kendall Baker
 Robert Cash
 Champion Footwear
 Thomas M. Evans
 Greater Tampa Swimming Association
 Holiday Inn - Airport
 Holiday Inn - Ashley Plaza
 Denis Johnson
 Dr. and Mrs. G. Jeffrey Klepfer
 J. Larry Massingill

McDonald's Sun Bowl International
 Mr. and Mrs. David R. Murphey
 Mr. and Mrs. Lester K. Olson
 Pepin Distributing Company
 Pepsi Cola Bottling Company/South
 Dr. Maria Prado
 Frederick M. Rothenberg
 Dr. Richard Sellers
 T. Terrell Sessums
 Tampa Alpha Alumni Chapter
 The Tampa Tribune
 Rick and Sandy Thomas
 USAir
 Dr. Eric Vlahov
 Mr. and Mrs. Theodore E. Wade

SWORD & SHIELD GOLD (\$500 - \$999)

Eddie Amo
 Christine Klopfer Angel
 Charles Caccamo
 F. Chris and Linda Catanach
 Danka Industries
 Escot Transportation
 Dr. J. Patrick Figley
 Matthew S. Fisher
 Curt Genders
 John A. Green
 Edward I. and Wanda Howell

Continued on Page 18. . .

C O N T R I B U T O R S

Sal Italiano
Mark M. Kane
George A. Levy
Vincent J. Naimoli
Mr. and Mrs. Richard C. Swirbul
Tampa Jai Alai/Giles L. Ellis, Jr.
Glenn and Mary S. Tobin
Lee M. Tobin

SWORD & SHIELD RED (\$250 - \$499)

Manuel G. Alvarez
Andy Anderson
Sam Bailey
Cary M. Bogue
Douglas K. Brooks
Bill Cash
Anthony Cutrono, Jr.
Rafael Diaz
Mario Garrido
Gold Cup Coffee
Harry G. Guetzlaff
C. Michael and Denise Halfast
Edward I. and Wanda Howell
Dennis Kinard
Gene and Barbara King
Dr. and Mrs. Lee C. Kirkman
Mr. and Mrs. Fred D. Learey
Michael J. Leding, Jr.
Daniel F. Martinez, II
Thomas O. McDonald
John Morris/Quaker Oats-Gatorade
Robert E. Morris
Donald M. Nairne
Eric Robert Nordheim
Gregory K. Nordheim
Rick and Sheri Ogorek
Dr. Xavier E. Prida
David W. Queen
Richard J. Schwartz
L. Garry Smith, Jr.
Mr. and Mrs. William T. Snyder, Jr.
Norman E. Solomon
Mr. and Mrs. James E. Sweeney
Tampa Eye Clinic
Cynthia Tynes
Hindman P. Wall

SWORD & SHIELD BOOSTER (\$100 - \$249)

Laura E. Atteberry-David
Terence R. Brown, Jr.
Jeffery A. Carter
Mary and Mike Childers
Douglas B. and Maureen Cohn
Austin R. Curry
Robert M. and Lynda A. Daisley
Diaz/Fritz Group Construction
James J. Dinobile
Mr. and Mrs. Malcolm Eales
Dorothy (Talbot) Glover

1991-92 SWORD & SHIELD

Continued from Page 17

Lt. James T. Greene
Joseph Guerriero
W. G. Gunnoe
Dan and Barbara Gura
Matthew M. Haley, IV
C. L. Hall
Larry L. Hatlestad
Stephen P. and Linda Hess
A. Clewis Howell
Mike Hurley
J. Seth Huston
Thomas M. Janton
Manuel Junco, Jr.
Mr. and Mrs. James M. Kelly
James T. Kelly, Jr.
Roger H. and Barbara G. Kessel
Amy Wagner Kirkland
Michael J. and Judy Kosiba
James A. Kostoryz
Mr. and Mrs. James H. Kynes
Tom Leto
Dr. Mark Owen Lombardi
Michael J. Macaluso
Stephen and Rose-Marie Magriby
Tino Martinez
Peter H. Martinowicz
McIlwain, Silverfield and
Burnette, MD's
Dr. Linda L. Musante
Kenneth R. Nuznoff
Racers Edge Swim Wear
William E. Ragan
Angel and Eusebia F. Ranon
Bill Redford
Dr. Alice Rodriguez
Jack Rodriguez
Robert V. Rupp
Joseph "Red" Ryan
Marc D. Sarnoff
David R. Schulz
Arni and Andrea Sigurdsson
James Spellman
Emmanuel J. Suarez
Gil and Cathy Swalls
Dr. Susan Welsh
Bruce A. Wilkie
Stuart A. Williams
Jack and Carolyn Wilson
Joseph J. and Vilma Zalupski

ATHLETIC CONTRIBUTORS (\$1 - \$99)

A & A Electric Services
Thomas A. and Nancy J. Barrow
Bubba Beckwith

Dr. Wade G. Birch
Don Bostic
Mr. and Mrs. Ron Brown
Larry W. Bryant
Edward T. and Rebecca Caldwell
Jim Carroll
Michael Casagrande
Timothy J. Converse
Calvin E. Dillard
Paul Edwards
Richard Eskell
Maureen A. Fahey
Mr. and Mrs. Frank Ferlita
Joseph E. Frank
Wayne A. Fuller
Jim Hargrave
Paul B. Heth
Evelyn P. House
Therese M. Kominski
Greg K. Landmark
Ken Lippincott, Jr.
James J. Martindale
Stephen H. Mauldin
Mr. and Mrs. Boyd Nelson
Mr. and Mrs. Scot Newman
Joe Niland
Johnny Dean Page
Aurelio and Pamela S. Prado
James C. Preston, Jr.
Terry Rupp
Marcy Serafin
David Seward
Robert D. Simmons
Gerald L. Smith
Tom Snyder
Dr. Andrew J. Solomon
Randy Stevens
George W. Streff
Mr. and Mrs. Keith S. Surgenor
Robert J. Tart
Robert F. Tomczak
Salvatore J. Urso
Scott D. Wilson

SPECIAL GIFTS

IN HONOR OF THE 50TH REUNION
OF THE CLASS OF 1942

Tom J. Johnson, Jr.
James W. and Celeste Whitehead

IN HONOR OF THE BIRTHDAYS OF
JOHN and MARY WEEKLEY

Mr. and Mrs. William A. Gillen

IN HONOR OF JOYCE WILTSE

Norman D. Cramer

IN HONOR OF THE MEN and
WOMEN OF THE U.S. MARINE
CORPS

James J. Martindale

C O N T R I B U T O R S

1991-92 GIFTS (\$1-\$99)

Anonymous	Bennigan's	Joseph A. Cacciatore
Kathie J. Aagaard	Thomas R. Berg	Cactus Club
Robert and Karen Abberger	Mr. and Mrs. Bruce G. Berger	Mary Licalsi Cagnina
Trina L. Abruzzino	Sam G. Bessis	Norma Caltagirone
Richard C. and Linda Sue Ackert	Annette J. Betancourt	Marvin W. Campbell
Dr. and Mrs. Joseph D. Adams	Dr. Wade G. Birch	David H. Camper
A. Louise Agnew	Dr. Lisa C. Birnbaum	Dr. Xavier F. Cannella, Jr.
Margaret Neef Agnew	Robert C. Bixby	George R. Card
J. Craig and Kimberly Patterson	Stacey L. Blackwood	Mr. and Mrs. Joseph Card
Ainsworth	Russell M. Blain	Maurice H. Carleton
Patricia Alchediak	Robert L. Blanchard, Jr.	Lynne Ann Carlson
Gloria Gutierrez Alderman	George L. Blanco	Jean C. Carpenter
Donna Niedens Alexander	Rock A. Blanco	Gloria Carper
Frederick W. Alf, Jr.	Mr. and Mrs. Eugene P. Blich	Carey W. Carr
Dale W. Allen, Jr.	Boarding House/Yellow Rose	Stella Rogers Carr
Evelyn L. Almand	Bob Knight Photo Marketing	Deloris Patrick Carter
Frank F. Ambrosino, Jr.	Clementina V. Bode	Casa Gallardo
Drew Anderson	Sue Ellen Boggs	Robert F. and Ann Marie Cascella
Sylvia C. Anderson	Joe Bohren	Barbara Casey
Shirla Andes	Robert Boileau and Sherrie Gill	Mr. and Mrs. Eugene J. Casey, Jr.
James E. Andrews	Scott D. Bonifield	Calvin L. Catalano
Dr. Minerva Applegate	Maj. James Lee Bonnette	CDB Italian Restaurant
Celia M. Aquino	Elizabeth L. Boudreau	Ronald M. Cento
Msgt. Miller B. Arbutine	Raymond and Joyce Bourgholtzer	Kathryn Anne Chambliss
Ruben Ares	Maj. Kenneth G. Bowen	Francis D. Chatigny
Jack A. Arnold	April J. Boyle	Jay M. Chrobak
Jon C. Arnold	Mr. and Mrs. William Bradford	Lisa Jeane Owen Churilla
SFC Esteban Arroyo	Dr. Philip C. Bragg	Edward S. Ciocys
Audrey L. Ashley	Ruth Bragg	Dr. Axel W. Claesges
Doris M. Ashley	Joel P. Braverman	Beth-Anne Clancy
William K. Askew	Everett B. Bray	Mr. and Mrs. J. Wayne Clark
Laura E. Atteberry-David	Dr. and Mrs. Samuel E. Brick	Richard T. Clausi, Sr.
Jill HenryAufiero	Donald Bridges, Jr.	Marian Dimarco Cleland
Maureen Avila	Douglas H. Bridges	George A. Clement
Gregg Bachman	Susan F. Brinkley	Gregory A. and Mary Cleotelis
Shelton Lee Baenninger	Joseph P. Brinton, III	Mr. and Mrs. Donald B. Cohen
Mr. and Mrs. Arthur E. Bagley	Donald R. Britt	I. Michael Cohen
David W. Baker	Karen M. Britt	Sara Cohen
Phyllis Flanagan Baker	Dr. Joan Brock	Lizbeth J. Cohn
Sheryle R. Baker	Lt.Col. Orville Lee Brock	Jo Ann Coleman
Richard A. Baldwin	Dale L. Brook	Dr. Marie M. and Mr. Michael
Mr. and Mrs. David Barkey	Kevin E. and Renee Morgan Brown	R. Coleman
Carol A. Barnes	Brown's Trophies, Inc.	Susan L. Coley
Edward B. Barnes	Stacia Lyn Bryan	Ella Conarton
Kathy Erickson Bartalino	Buccaneer Car Wash	Michele M. Coneys
Cristin Marie Barth	Tammy J. Buchan	Heidi C. Conger
Lakshman P. Batni	Rey and Josette Bulnes	Reba F. Cook
Betty Johnson Becker	Robert A. Bunnell	Dr. Robert J. Cook
Lisa Douglas Bednar	Gail Burch	Richard B. Cooper
Mr. and Mrs. David C. Beecroft	Lydia E. Burguet	Olga Corrales
Jack D. and Ada C. Begelman	Lt.Col. Walter Burkett	William J. Counihan, III
Anne M. Behrendt	Elizabeth E. Burnside	Ileana R. Couret
Elizabeth Allen Bell	The Hon. Walter N. Burnside	Susan G. Courtney
Norma L. Bell	Stephen Burroughs	Diane Hocesvar Couzens
Lt. Col. William H. Bellis	Arthur E. Burrows	Sylvia A. Covington
Thomas P. Bennett	Bernardine A. Butler	
William W. Bennett, Jr.	Wayne Byrne	

Continued on Page 20. . .

C O N T R I B U T O R S

David A. Cowdrick
 Kristin K. Cox
 Crackers Comedy Club
 Pauline Craver
 Lt.Col. Marcus B. Crisman
 Gene and Jane Cropsey
 Dana L. Crosby
 James R. and Gail L. Crosby
 H. Lee Culbreath, III
 Pamela A. Cunningham
 Barry W. and Melissa Curewitz
 Lt. Patrick K. Curran
 Carl H. Dahm
 William D. Dallas
 Ruth L. D'Angelo
 Daphne A. Darden
 Lorraine D. Datello
 Jerry D. Davis
 Pamela J. Davis-Diaz
 Sandra Day
 Bessie Dean
 Kip and Ann DeBellevue
 David Dees
 Myrna De Jesus Flynn
 Delta Air Lines
 Andrew F. Demeyer
 Nancy M. Deshaies
 Louis Robert Diaz
 Tania S. Diaz
 Joe Dibari
 Alfred R. Dickey, Jr.
 Simon L. and Sandra Dingfelder
 Lawrence R. Donohue
 Mark F. Douglas
 Claire VanBreemen Downes
 Patrick Doyle
 Dean Charles Drapin
 John C. Dromey
 John T. Duff
 Mr. and Mrs. Lee Duncan, Jr.
 Dr. Ruth K. Duncan
 David Earle Dutch
 Sharyn Duval
 Frank J. Dykeman
 Mary Sheridan Easton
 Mr. and Mrs. Ray Eddy
 George E. Edmondson, Jr.
 Erica L. Edwards
 Kathleen Mary Egan
 Ruth Higginson Eikeland
 Cathleen Moran Elisha
 Dean S. Ellis
 Gini L. England
 Phillip and Bonnie Eppenstein
 George W. Ericksen
 Keith R. Erickson
 William C. and Louise W. Erk
 L. Ewing Esch
 Dawn M. Eslick

1991-92 GIFTS (\$1-\$99)

Continued from Page 19

Robert A. Estes, Sr.
 Dr. Nicholas V. Faklis
 Alphonse N. Falco, Jr.
 Col. John Francis Farnham
 Mr. and Mrs. Willard Fein
 Michael J. Feinstein
 Christian W. Felentzer
 Angela Felix
 E. Anne Ferguson
 Mr. and Mrs. Frank Ferlita
 Dr. Eustasio Fernandez
 Frank S. Ferreri, Jr.
 Lt.Col. Robert A. Fimbel
 C. Steven Finney
 Robert L. Fish
 Kenneth J. Fisher
 Eleanor A. Fisk
 Dr. Lawrence T. Fitzgerald
 Noa Spector Flock
 Robert Florio
 Jerry Flynn
 Dr. Carroll E. Fogal
 Brenda Foody
 Douglas A. Ford
 Lucille Fleet Ford
 Joyce K. Foy
 Shirley Frank
 John H. Franks
 Charlene Gibney Frazier
 Charles A. Friesema
 Maj. Richard Frysinger
 Christine Bradley Gagnon
 Ruby Gallagher
 Gonzalo C. Garcia
 Geoffrey R. Garson
 Randal E. Gassman
 Denis Gaston
 Rosemary Gecan
 Teresa J. Gettel
 Dave Green Giannis
 Gerald L. Gillis
 Paul M. Githens
 Domenic V. Giunta
 William W. Godfrey
 Deanne L. Godin
 Guillermina J. Gonzalez
 Jeffrey L. Goss
 Susanna Fenhagen Grady
 Andrea Graham and Geoffrey Simon
 Grand Prix Car Wash
 Charlotte H. Grant
 Anthony V. Greco
 Miriam Davis Green
 Gloria J. Griffith
 Theodore W. Griggs

Mrs. Anthony J. Grimaldi
 Brian L. and Chantelle D. Groene
 Richard H. Gruber
 Dr. Frank M. Gryna
 Patricia Gunn
 Marco T. Gutierrez
 Ruth H. Haager
 Robert O. Hach
 John E. Haefeli
 Seth D. Halpern
 Susan T. Hamer
 Mark and Heather Hamilton
 Mr. and Mrs. Cyril V. Handley
 Douglas G. Harding
 Dorothy T. Harper
 John D. Hassett
 Mr. and Mrs. Donald P. Heald
 Amy Hill Hearth
 Dr. Steve T. Hekkanen
 Lee O. Henley
 Andrew J. and Sylvia A. Henry
 Lois Henry
 Mr. and Mrs. W. Parke Herbert
 Lt. Dana L. Hess
 Dr. Suzanne M. Hiebert
 Patricia A. Higgins
 Robert J. Hilsky, Jr.
 Elizabeth W. Himes
 Lynnette Hirth
 Andrew Hlavach
 Dan S. Ho
 James H. Hockenberger
 Robert P. Hoenscheid
 Dr. and Mrs. Leon Hoke, Jr.
 Barbara K. Holt
 Viveca Holt
 William H. and Thelma M. Horne, Jr.
 Matt Horsfield
 John E. Horst
 Gregory F. Howell
 Kevin M. Hughes
 Dr. Robert B. Hughlett
 Elaine C. Humanitzki
 Mark A. Humphreys
 William B. Hungerford, Jr.
 Elizabeth Hunt
 Mr. and Mrs. James Huntress
 Florence Rogers Hurn
 Hyde Park Tanning Spa
 Joel and Jaimi Hyer
 Raymond Ingersoll
 Dr. David Clark Isele
 Ann K. Izmirlian
 Gerald S. and Patricia Jackson
 Earl P. Jacob, Jr.
 Samuel E. Jacobson
 Joel Jankowski
 Mary Jo Jarrett
 Michael G. Jeffries

C O N T R I B U T O R S

Carolyn Jelliffe
Benjamin W. Johnson
Francis E. Johnson
Lila L. Faulk Johnson
Mr. and Mrs. Raymond Johnson
F. Bertram and Jean Bonham Johnston
Pamela Dawson Johnston
Col. Arthur A. Jones
Clarence Joseph
Mr. and Mrs. Thomas J. Judge
Fred Judson
William F. Kailing
Bentley F. Kaplan
Dr. Robert H. Kasriel
Ricki Rosenthal Kasse
Grace Dayan Katz
Marc W. Katz
Maureen Kearney
Jean Keelan
Grace Bruton Kelly
Mr. and Mrs. Richard C. Kelsey
Edward T. Kendrick
Joseph H. Kerr
Richard and Frayda Kerstein
Dr. Robert J. Kerstein
Mrs. Carroll Thomas Kesinger
William C. Kiefert
Phyllis Kimbel
Phyllis J. Kimel
Mary J. King
Roy C. Kiser
Bruce M. and Winsome M. Klay
Suzanne K. Klepacky
Mr. and Mrs. Fred Knox
Michael D. Kolb
Therese M. Kominski
Connie Kone
Anthony P. Kopecky
Kenneth L. Kraft
Deborah Kurelik and John Connolly
Juliet LaDouceur
Nancy L. Laho
J. Mark and Gail Landers
Greg K. Landmark
Mark F. Lapp
Salvatore R. Lascari
Samuel Lasky
Alfred C. Laubsch
Patricia C. Laurenson
Victor and Lee Bird Leavengood
Daniel R. LeClair
Richard H. Lee, Jr.
Marcelino Lemus
Dr. Deborah M. Lester
Edward C. Levine
Robert Levy
Mr. and Mrs. Norman G. Light
Dr. Paul J. Linnehan
Charles M. Linville

Frederick G. Little
Jennie Cusmano Locicero
Marshall A. Lockridge, III
Ruth Lodde
S. Hansen Long
David J. and Ellen Batsavage LoNigro
Patricia A. Lord
Carmen Lorente
George J. Lorenz
William R. Lorton
Lt. John M. Lowe
Lowry Park Zoo
Edward R. Lowy
Mr. and Mrs. David A. Luhrsen
Norma E. Lurie
Robyn Lutzk
Sharon J. Lynch
Mr. and Mrs. John M. Lynn, Jr.
Michael G. Macaluso
Donald A. and Joan V. MacCuish
Douglas B. MacCullough
John R. Madden
Eric A. Magendantz
Marc W. Malavasic
B. Maniscalco
Frank P. Maniscalco
Dr. Donald Marinelli
Carnick A. Markarian
Marilyn A. Mars
Nilda R. Martin
Frank Martinez
Rich Martini
William E. Marvin
Wayne N. and Betty S. Marx
Richard R. Massey, II
Mary F. Mast-Smith
Dr. Richard Mathews
Jerome and Linda D. Matisak
Maj. Durward L. Matthews
Drs. Lee H. and Janet R. Matthews
Ludwig J. Mazur
Fred and Kathy McBee
Denise A. McCabe
Rev. Harry McCartney
Laura C. McCooole
Lueretha C. McCray
Wayne M. and Norma J. McCumber
Catherine A. McGarry
Fay Shaver McGaughey
Shel McGuire
Mrs. Richard S. McKay
David and Ellen McLean
Christopher R. McNulty
Mr. and Mrs. Stephen C. McNutt
James A. McPhail, Sr.
Linda McRae
Dr. William McReynolds
Carol Moses McTamney
Maurine Robles McTyre

Valerie S. Mecutchen
Dr. Mandy Medvin
Dr. Howard James Meginley, Jr.
Laura L. Meisler
Dr. Michael J. Mendelsohn
Frank D. Menendez
Luisa Meshekoff
Nancy Rubenstein Messham
Donald M. Metzger
Mr. and Mrs. Glen Meyers
H. Joseph Middendorf
A. Douglas Middlebrook
Linda M. Miller
The Hon. Thomas A. Miller, Sr.
Elizabeth Mitchell
Cheryl B. Mogul
Mr. and Mrs. Robert Monastero
Karen A. Monz
Barbara M. Moore
Mr. and Mrs. Thomas Moore
Sally D. Moorehead
Marian K. Morgan
Suzanne Morse
Henry A. Moshell, Jr.
Mary Mott
Lora V. Motyl
Jim and Barbara Muchmore
Frank H. Muckel
Barton Mumaw
Dr. and Mrs. R. Jack Munyan
Clarence L. Murphy
Lloyd T. Murphy, III
Dr. Linda L. Musante
Tamami Naito
Blace A. Nalavany
Tiffany J. Nelson
Jane Close Nepveux
Stanford J. Newman
Dr. Suzanne Nickeson
Northdale Court Cinema
Mary Ruth Noto
George A. and Brenda Nousiainen
Col. Rollie Oatley, Jr.
Barbara Haskins Oberman
Michelle Obremski-Bugaski
Joseph B. and Mary Anne Obusek
Rudolph R. Odermatt
Anne McCurdy O'Grady
Rezia White Olson
Glenda K. Ondracek
One Up Golf Center
Lori A. Oppenheim
Joseph P. Orlando
Rosemary Orlando
Roseann Hover Ott
Hilda Fulgueira Oural
Marian J. Paeth-Burton

Continued on Page 22. . .

C O N T R I B U T O R S

Brenda K. Pancoast
Robert W. Parke
Walter J. Parsick
Carol A. Partington
The Hon. Alexander L. Paskay
Christopher M. Pastina
James T. Pate, Jr.
Cherlyn Paul
Sandy L. Payne
Domingo Albert Pazo, Sr.
Lois D. Pearse
Kathleen Taormina Peck
Jerry Pedrero
Arthur D. Pepper, III
Katherine Fox Pekny
John W. Pelkey, Jr.
Tim J. Pelot
Juan Pena
George and Barbara M. Pennington
Steven R. Perez
Maj. William S. Perkins, Jr.
Edith Perlo
Noretta E. Perry
Linda Pearlman Pickel
Dr. Edward C. Pierson
Richard F. Pittman
Jill Kirby Platts
Paul A. Pollak
William W. Pond
Wilson J. Pontius
Christopher Popik
Charles G. Possick
Joseph T. Potuzak, Jr.
Barbara K. Powell
Power Pig/Scott Baker
Phillip O. Powers
Dr. Kristen J. Price
Dr. Wayne Price
Mr. and Mrs. John T. Primm
Project Peace
Tony Provenzano
Dr. Fred and Mrs. Mary Ann Punzo
Susan Quackenbush
Dr. and Mrs. Philip F. Quinn
Carolyn B. Rabun
Dr. Margaret H. Raffa
Mr. and Mrs. Arnold J. Ragucci
Augustina Ramirez
Kristianne Rapp
Mr. and Mrs. Tracy Ray
Roddy Reed
Dr. Barbara Reischmann
Douglas B. Remington
Cathy Rendle
Capt. Patrick R. Repka
Catharine E. Reynolds
William H. Reynolds
Luz Robayo
William A. Robbins

1991-92 GIFTS (\$1-\$99)

Continued from Page 21

Capt. John C. Roberts
Bill and Beverly Roberts
Wendy K. Roberts
Richard F. Rockwell
Connie Roda
Dick and Trucy Rodeau
Evaristo L. Rodriguez
Gilbert M. Rodriguez
Mr. and Mrs. Juan Rodriguez
Nancy C. Rogers
Steven M. and Lisa A. Rorrer
Mitchell Jay Rosensweet
Phillip L. Rosing
Douglas B. Rowe
Anne L. and Jack F. Rowland
Ernest Rubio
Robert Ruday
Mary B. Rumph
Gloria C. Runton
Clovis D. Rusk
Karen M. Russo
Dr. Hemant "Rusty" Rustogi
Linda Ryan
Lt.Col. Robert R. Ryan
Dr. Constance B. Rynder
Steven and Andrea Saltzman
Glenda Marie Sams
Jose M. Sanchez
Andrea Davis Sanders
Dr. Luciano A. Santa Cruz
Rayma Santos
Eugene D. Sawyer
Gerald R. Scara
Robert E. Schatzman, Jr.
Dr. Mary Jane and Dr. David Schenck
Hugo Schmidt
William and Mary Schmitz
Scott A. and Lori Reith Schneider
Casey J. Schoen
Kurt R. Schuldes
Priscilla R. Schultz
Annette Bayliss Schwab
Edith Sconyers
Catharine T. Scott
Leonard C. Scoville
Erskine A. and Irene P. Seay
Frank V. and Margaret H. Selph
Mark D. and Linda Saul-Sena
Diane Senechal
James M. Shattuck
Shells Restaurant
James Shelton and Jan Abell
Joann E. Shepard
Hugh F. Shepard
Stephen E. Shine

Mr. and Mrs. John R. Shurley
Katherine L. Sible
Katherine Weekley Sidwell
Silver Dollar Trap and Golf
Sid Silverstein
Karen M. Simon
Henry S. Simonds
Mr. and Mrs. Bill Simpson
Dr. D. Gregory Singleton
Robert James Siwula
Olga E. Martinez Skokan
Alan M. Slutsky
Donald L. Small
James D. Smalley
John H. Smiley, Sr.
Carl U. Smith
Ella B. Smith
Juanita A. Smith
Victor S. Smith
Joan Elizabeth Snyder
Dr. Andrew J. Solomon
Dr. Eldra Pearl Solomon
Michael S. and Amy Minoff Southard
Spaghetti Warehouse
Ira Spear
Robert L. Spencer
Gary L. Spinelli
Terrance E. and Sherill Z. Stahl
Diana Ray Stanley
Charles A. Stanton
William J. Starling
Neil Starr
Selma Starr
The Hon. Ralph and Mrs. Marlene
Steinberg
Leslie Ann Steward
Dr. John A. Stocker
Willie J. Stokes
Stephen R. Stonewell
Robert L. Stookey
Dr. Ralph E. Stout
Pamela W. Strada
Margaret Thompson Stumbo
Mr. and Mrs. George F. Sulock
Fred and Carol Sundberg
C. Michael Sunderland
Mr. and Mrs. George W. Suter
Elmer Daniel Swanson
Stanley J. Swanson
Ledra Sweeney
Wilhelmina A. Szabo
James R. Szelminski
Tampa Bay Travel/James Locke
Tampa Pitcher Show
Tampa Theatre
Derek A. and Leslie Taylor
Lt.Col. Emmett L. Taylor
Louis E. Taylor, Jr.
Mr. and Mrs. James L. Taylor

C O N T R I B U T O R S

Susan Mary Taylor
Robert J. Terri
William P. Terri
Bill and June J. Thomas
Dr. Albert H. Tillson, Jr.
John C. Todd, III
Rachelle M. Tokar
Lewis W. Tougaw
Mr. and Mrs. Jim J. Tozzi
John L. Traina
Daniel Traugott
Ivy L. Trekas
Msgt. Michael Trent
Shirley Trzaska
Timothy R. Trzcinski
Douglas A. Tulp
Kevin A. Turner
Martha H. Turner
Charlotte Eden Umholtz
Matt A. Valaes
Henry and JoAnn Valenti
George E. Vallejo
William O. Van Brunt
Dr. Albert C. Van Dusen
Victor Valez
James R. Verkler

Scot E. Walker
William F. Walker
Kathryn G. Wallace
Beth Walters
Joseph Ward
Kathryn Crabb Warner
Louise E. Gilbert Warner
Robert D. Warren
Wendell D. and Frances M. Waters
Peggy Foster Webb
Dr. Leila G. and Mr. William W. Welborn
Jeffrey L. Wells
Michael E. Wells
Cornelia St. Johns Wert
Allison E. West
Dr. Charles R. West, Jr.
Mr. and Mrs. Edward H. West
Melinda West
Lawrence P. Westfield
Mr. and Mrs. Malcolm Westly
Jackson B. Wharton
Geoffrey A. White
Jessica L. Whitman
Billy Wienman

Pat Fenda Wilborn
Stephen J. and Beverly Roy Williamson
Jeanette Fernandez Wilson
Jeanne Wiltse-Royston
Lynne Wimmer
Dr. and Mrs. Bruce C. Winkler
Sheila J. Winshurst
Dr. Elizabeth Winston
Dr. Norma Winston
Charles E. Wolfe
Lynona D. Woodbury
Sgt. Jerry Wooten
Brian S. Wormser
John B. Wuertz
Andre R. Wyatt
Cynthia E. Xenick
Mr. and Mrs. Charles M. Yancey
Dr. Francis A. Young
Roy N. Young
James L. Zachary
Henry P. Zaranski
Frank R. Zedar
Fred R. Zimmerman
Paul N. Zimmerman
Marie B. Zoretich

ENDOWED SCHOLARSHIPS

The University of Tampa gratefully acknowledges the individuals, corporations, and foundations who have established endowed scholarships and have so generously been instrumental in securing the university's future.

Jane and Sid Allen Athletic Endowed Scholarship
Mrs. Alfredo Antonini Music Award Endowment
Edna McDuffie Barritt Endowed Scholarship
Lillian K. Bassler Endowed Scholarship
William and Sarah Brorein Endowed Scholarship
William J. Carter Endowed Scholarship
W. Hampton Copeland, Jr. Endowed Scholarship
A. L. Cuesta, Jr. Endowed Scholarship
Dr. Martin S. Denoff Volunteer Award
Julia I. Dickenson Endowed Scholarship
Darin Donahue Endowed Scholarship
G. Paul Dorfuller Art Endowed Scholarship

Jack Eckerd Endowed Scholarship
Sam and Julia Flom Nursing Endowed Scholarship
Sherman B. Forbes Endowed Scholarship
J. A. Griffin Endowed Scholarship
Nash Higgins "Rat Hole Gang" Endowed Scholarship
Jones Intercable Tampa Trust Endowed Scholarship
Helen Drysdale Jones Endowed Scholarship
Kessler-Wittcoff Endowed Scholarship
Peter O. and Girlie Knight Endowed Scholarship
Karl R. Kreher Endowed Scholarship
Richard N. Lane, Jr. Endowed Scholarship
Dr. C. Herbert Laub History Award Endowment
Marian E. Learey Memorial Endowed Scholarship
Professor Emeritus John H. Lindenmeyer Political Science Endowed Scholarship
R. A. Little Endowed Scholarship
Lowry Freedom Award Endowment
K. I. McKay Endowed Scholarship
James D. Milligan Endowed Scholarship

Ellwood C. Nance Endowed Scholarship
Colonel George J. Oden Endowed Scholarship
Paul O'Donnell Endowed Scholarship
Lisa Pauchey Memorial Endowed Scholarship
Art Pepin Golf Award Endowed Scholarship
The Polish Heritage Foundation Endowed Scholarship
Austin and Arline Rising Endowed Scholarship
William J. Sammis Endowed Scholarship
T. Terrell and Neva S. Sessums Endowed Scholarship
John E. Sheridan Continuing Education Endowed Scholarship
Freddie Soloman Endowed Scholarship
Dr. William D. Stewart Memorial Scholarship
Lloyd G. and Jeannette C. Tingwall Endowed Scholarship
Frank Traynor Endowed Scholarship
J. A. Waterman Endowed Scholarship
Morris Edward White Memorial Endowed Scholarship

C O N T R I B U T O R S

IN MEMORIAM

PROFESSOR APPLE
DR. BAKER
JOHN A. BALDWIN
LEE BRAYDEN
DR. OSCAR BRONEER
JOHN M. COMPARATO
FRANCES DEMERS
DR. MARTIN S. DENOFF
RAY ELLIS
E. W. "JACK" FITZGERALD
FRANCIS P. KELLY
MARY KIDD

WARD KLEPPER
WILLIAM LANDWER
RONALD PETER MATHEWS
LILA MORGAN
HARRY A. MORRIS
JOSEPH E. NEBLETT
CONNIE NEWTON
RICHARD M. PROTOVIN
CLARENCE N. READ
DR. JOHN B. READ
MILFORD L. RHINES

SMITH RICE
DICK SLEICHTER
ED SLIZ
DR. STEPHEN L. SPERONIS
DR. WILLIAM STEWART
BERNICE TARNOW
CHRISTIAN G. TAYLOR
DONNA TRAYLOR
MILO VEGA
ADELE WARD
MR. & MRS. R. C. WOODARD
ARTHUR G. WUERTZ

1991-92 ALUMNI DONORS

'33
William A. Gillen

'35
Anthony J. Grimaldi
Carlisle Hutchinson
Harry McCartney
Mary G. McCloskey
Valerie (Stubbs)
Mecutchen
Mary B. Rumph
Edith (Hilliard) Sconyers
John L. Traina
Byron G. Wilson

'36
William C. Buchanan
Domenic V. Giunta
Sophie T. Kurtz
John H. Smiley, Sr.

'37
James E. Andrews
Paul B. Edwards
Dorothy (Talbot) Glover
W. G. Gunnoe
Olga E. (Martinez)
Skokan
Albert C. Van Dusen

'38
Robert B. Hughlett
L. N. Ingram, Jr.
F. Bertram Johnston
Lois (McGucken)
McCormick
Jane (Pearson) Setzer
Mark M. Shine

'39
Braulio Alonso
Martha (Powell)
Brincklow
Stella (Rogers) Carr

Carl H. Dahm
William Dmytryk
H. Hampton Dunn
Frances Keating
Grace (Bruton) Kelly
Jewel (Hamilton)
MacLear
Anne (McCurdy)
O'Grady
Cecil B. Reed
Kenneth J. Reid
Frances (MacNamara)
Waters
Wendell D. Waters
Alvin P. Yorkunas
Mary Ann (Sampey)
Yorkunas

'40
Margaret (Neef) Agnew
Edward B. Barnes
George E. Edmondson, Jr.
Martha A. Franco
Cyril V. Handley
Thelma M. Horne
William H. Horne, Jr.
Florence Rogers Hurn
Robert H. Kasriel
Stephen J. Krist
Henry A. Moshell, Jr.
Wilmot E. Y. Paxton
Dale N. Petersen
Margaret H. Raffa
Harry S. Robertson
John H. Sherman, Jr.
Ella (Berry) Smith

'41
Mark John Ball
Arthur E. Burrows
Anna (Lazzara) Duncan
John S. Goodson, Jr.
Frances Sessions
Hoffmann
Grace (Dayan) Katz

Frank P. Maniscalco
Margaret (Reading) Ragg
Alton L. Rine
Celeste (Dervae)
Whitehead
Francis A. Young

'42
Gloria Gutierrez
Alderman
Phyllis (Flanagan) Baker
Sam G. Bessis
Mary Eleanor (Mercer)
Cline
John C. Dromey
Lee Duncan, Jr.
Sarah (Barnes) Edwards
Edward I. Howell
Tom J. Johnson, Jr.
Carroll Thomas Kesinger
Stanley W. Moore
William W. Read
Mary Jones Tylander
James W. VerPlanck
Tula Carter VerPlanck
James W. Whitehead

'43
Olga Corrales
Jeanne (Rouby) Farris
Dorothy (Thonnesen)
Harper
Norman G. Light

'44
Elizabeth (Erwin)
Burnside
Maurice H. Carleton
Sidney Colen
Elizabeth Holton Enlow
Margie (Casal) Gonzalez
Miriam Davis Green
Wanda (Waters) Howell
Mabel (Aughinbaugh)
Malsbary

Maurine (Robles) McTyre
Hilda Bethea Mills
Gloria C. Runton

'45
Eleanor A. Fisk
Jose I. Gonzalez
Reonthia Hutchinson
Mary Catherine
(Martin) Manning
Dorothy (Giles) Read

'46
Cornelia (St. Johns) Wert

'47
Alfred S. Austin
Mary (Leone) Cleotelis
Robert O. Hach
Bruce M. Klay
Joe D. Mills
Kathryn G. Wallace

'48
Adelfa (Diaz) Alonso
Mary (Licalsi) Cagnina
Gloria (Rodriguez)
Ferlita
Lewis H. Hill, III
Jennie (Cusmano)
Locicero

'49
W. Kendall Baker
Donald R. Britt
Lawrence R. Donohue
Claire (VanBremen)
Downes
Mary Virginia (Fletcher)
Handley
Harry M. Hobbs
Patricia (Scott) Jackson
Benjamin W. Johnson
Katie Keene

William J. Priff
Kathryn (Crabb) Warner

'50
E.T. Kendrick
Thomas E. Bissonnette
Everett B. Bray
Deloris Patrick Carter
Gregory A. Cleotelis
Norman D. Cramer
Thomas M. Dankert
Bessie (Benton) Dean
Renee (Bleameneau)
Fisher
Louise Clayton Giargiari
Gerald S. Jackson
Fred H. Kenfield
Joyce S. Plumley
Katherine L. Sible
Henry P. Zaranski

'51
Bruce W. Adams
Dorothy F. Bachman
Carol A. Barnes
Bernard I. Cohen
Paul W. Danahy, Jr.
Carroll E. Fogal
C. L. Hall
Perry O. Keene, Jr.
John H. Lindenmeyer
James A. McPhail, Sr.
A. Douglas
Middlebrook, Jr.
Robert E. Scott
Frank V. Selph, Sr.
Emmanuel J. Suarez
Jose Nededog Unsiog

'52
Betty Johnson Becker
Wallace W. Blackburn
Georgia (Reed) Danahy
Mary Sheridan Easton

C O N T R I B U T O R S

John E. Haefeli
Alice Rodriguez
Ernest Rubio
Joseph "Red" Ryan
Priscilla R. Schultz
Leonard C. Scoville
Frank S. Sinkwich
Juanita A. Smith

'53

Walter N. Burnside, Jr.
Richard H. Gruber
Ralph Steinberg

'54

Ruben Ares
William W. Bennett, Jr.
Nicholas V. Faklis
Mary Ruth (Duncan) Noto
Tony Provenzano
Katherine Weekley
Sidwell
Robert L. Spencer

'55

Robert E. Beach
Charles E. Fisher, Sr.
Andrew J. Henry
John M. Lynn, Jr.
E. A. Peck
Joseph J. Zalupski

'56

James R. Crosby
William D. Dallas
Christian W. Felentzer
Jean (Bonham) Johnston
Kenneth R. Nuznoff
Jackson B. Wharton
Kenneth T. Williams
Vilma (Fernandez)
Zalupski

'57

George R. Card
Austin R. Curry
Louise W. Erk
Etelvina A. Hutchins
Tillman D. Moore
Jane Close Nepveux
John B. Wuertz
Manuel J. Yglesias

'58

Ruth Bragg
Ruth Higginson Eikeland
Nan (Davis) Gallagher
James M. Kelly
Joe M. Klay
Richard H. Lee, Jr.
Mary June (Spencer)
Parent
Domingo Albert Pazo, Sr.
Charlotte Eden Umholtz
H. Glenn Waddell

'59

George L. Blanco
Margaret (Guyer) Booth

Bernardine A. (Becker)
Butler
Joseph A. Cacciatore
David H. Camper
Kenneth J. Fisher
Robert Florio
James A. Gallagher
Ruth H. Haager
William D. Leith
Thomas A. Miller, Sr.

'60

Howard P. Best, Jr.
Wade G. Birch
Gerald W. Bobier
James Lee Bonnette
Calvin L. Catalano
Lawrence T. Fitzgerald
Sam A. Giunta
John N. Harrison, III
Barbara (Sapp)
Reischmann
Gilbert M. Rodriguez
Robert James Siwula
Norman E. Solomon
Diana (Ray) Stanley
Ralph E. Stout
Richard C. Swirbul
Lewis W. Tougaw
Andre R. Wyatt

'61

Charles T. Booth
Robert A. Burwell
L. Ewing Esch
Willard Fein
Robert J. Fox
Joseph H. Kerr
S. Hansen Long
Guy W. Otto
Dennis F. Pupello
Eldra Pearl (Brod)
Solomon
Robert L. Stookey
Stanley J. Swanson
Jeanne Wiltse-Royston

'62

Gloria (Pettigrew) Bobier
Wanda (Overman) Carter
Axel W. Claesges
Gilmore A. Dominguez
Marian P. Goodbread
John W. Hanna, Jr.
James J. Martindale
Joseph B. Obusek
William S. Perkins, Jr.
Charles G. Possick
John T. Primm
Jose M. Sanchez
Victor S. Smith
Marlene Steinberg
Mary Carmen Trout
Jeanette Fernandez Wilson

'63

Patricia Alchediak
Joyce (Boling)
Bourgholtzer

Mack T. Christian
Nannie G. Christian
George A. Clement
Theron J. Hotaling
Walter R. Hudson
Robert D. Mohr
Brenda (Baggett)
Nousiainen
George A. Nousiainen
Mary Anne (Fox) Obusek
Samuel J. Rampello
Luciano A. Santa Cruz
Joan Elizabeth
(Bettendorf) Snyder
Harry R. Trout, Jr.
Jessica L. Whitman
Cynthia (Kladis) Xenick

'64

Norma L. (Schwendau)
Bell
Marcus B. Crisman
Lorraine D. Datello
Andrew F. Demeyer
Geoffrey R. Garson
John E. Horst
Jacob Fred Judson
Nicolas G. Maragos
Catharine (Tucker) Scott
James D. Smalley
William P. Terri

'65

Nancy Alchediak
Paul W. Babikow
David W. Baker
Raymond Bourgholtzer
Gilbert DeMeza
Lucille Fleet Ford
William A. Gibson
Kevin M. Hughes
Alfred C. Laubsch
Patricia (Cunningham)
Laurenson
Richard R. Massey, II
Durward L. Matthews
Fay Shaver McGaughey
Suzanne Morse
Clarence L. Murphy
Walter J. Parsick
Phillip O. Powers
Douglas B. Remington
John R. Shurley, III
Donald L. Small
Wilanne (Starling) Stowe
Charles Walker
Robert D. Warren
Lawrence P. Westfield

'66

Walter Burkett
Wayne Byrne
Frank G. Cisneros
David Earle Dutch
E. Anne (Plummer)
Ferguson
Stephen P. Hess
Martin Lutzk
Janet (Rogers) Matthews

Rey A. Neville
Harold Nosti
Joseph P. Orlando
Jerome D. Quinn
Eugene D. Sawyer
Derek A. Taylor
Leslie Taylor
John V. Whitbeck

'67

Joel P. Braverman
Richard B. Cooper
Richard B. Faunce
Daisy Bowman Fisher
Mary Jo Jarrett
Lee H. Matthews
Robert F. Meredith
Cheryl (Ellis)
Middlebrooks
Charles A. Stanton
James Stowe, Jr.
Robert J. Terri
Marilyn J. Westly

'68

Edgar B. Bradley, Jr.
Dean Charles Drapin
Thomas M. Evans
Alphonse N. Falco, Jr.
Seth D. Halpern
Robert Levy
Norma J. McCumber
Ronald A. McMakin
Marian K. (Moore)
Morgan
Hilda (Fulgueira) Oural
Steven R. Perez
Andrew L. Pink
Michael Taylor Rao
Jack Rodriguez
William W. Welborn

'69

Linda Sue (Tennant)
Ackert
Richard C. Ackert
Robert G. Addems
Ron Brown
Robert J. Cook
Amy J. Doktor
Michael J. Feinstein
Manuel Junco, Jr.
Maureen Kearney
Nancy L. Laho
Edward C. Levine
Francisco R. Martinez
Howard James
Meginley, Jr.
Arnold J. Ragucci
Hugh F. Sheppard
Henry S. Simonds
Elmer Daniel Swanson
Martha H. Turner

'70

Robert L. Blanchard, Jr.
Connie (Ohlman) Bradish
Orville Lee Brock
Michael C. Cartwright

Anthony Cutrono, Jr.
Jerry D. Davis
John D. Hassett
Patricia A. Higgins
Gene King
Salvatore R. Lascari
Kathleen Taormina Peck
Fred E. Pollock
Louis E. Taylor, Jr.
William F. Walker
Stuart A. Williams

'71

Christine Klopfer Angel
Miller B. Arbutine
Ronald M. Cento
Richard T. Clausi, Sr.
Marian Dimarco Cleland
John H. Franks
Martin J. Gall
Susanna Fenhagen Grady
Marilyn (Menko) Hamlin
Gregory F. Howell
Scott K. Mahlum
William B. Martin
Rudolph R. Odermatt
Barbara K. Powell
Susan (Scolnick)
Quackenbush
William A. Robbins
Joann (Silka) Shepard
Ruth Wernick
Brian S. Wormser

'72

Martin Andersen, Jr.
Thomas R. Berg
Edward T. Caldwell
Rebecca (McMullen)
Caldwell
Marvin W. Campbell
Robert A. Estes, Sr.
Robert A. Fimbel
Gerard J. Henkel
Francis E. Johnson
Arthur A. Jones
Mary F. Mast-Smith
Charles W. Peters
William W. Pond
Samuel C. Russell
Alan M. Slutsky
Charles C. Smith
Terrance E. Stahl
Willie J. Stokes
Carol Granberg Sundberg
Rick Thomas
Sandy (Baldwin) Thomas

'73

Brigitte Hinz Andersen
Elizabeth (Allen) Bell
Kenneth G. Bowen
Douglas K. Brooks
Frank J. Dykeman
Robert L. Fish
Robert J. Knight
Michael R. Pender, Jr.

Continued on Page 26. . .

C O N T R I B U T O R S

1991-92 ALUMNI GIFTS

Annette Bayliss Schwab
Gary L. Spinelli
George F. Sulock
Jeffrey H. Thomason
Douglas A. Tulp
Frank R. Zedar

'74

Trina L. Abruzzino
Michelle (Lepore) Barry
Clementina (Varona) Bode
I. Michael Cohen
Dennis M. Fisher
Jeanne Ryan Furcron
Wyckliffe Furcron
James H. Hockenberger
Ricki Rosenthal Kasse
Ralph D. Klein
William R. Lorton
Stephen Magriby
Barbara M. Moore
Francis R. Morse
Robert W. Parke
Arthur D. Pepper, III
Juan Pena
Douglas B. Rowe
Dawn M. Smith
Sherill (Zucker) Stahl
Emmett L. Taylor
Victor Velez

'75

Douglas H. Bridges
Marie M. Coleman
Michael R. Coleman
Peter L. Getzler
Jerrold Wirth Gregory
Valerie Smith Hirvela
Anthony P. Kopecky
Samuel Lasky
David A. Luhrsen
Rose-Marie (Solis)
Magriby
Donald Marinelli
Pamela F. (Mason) Sulock

'76

Shelton Lee Baenninger
Douglas J. Bender
Robert C. Bixby
April J. Boyle
Philip C. Bragg
Diane Hocevar Couzens
Virginia M. Covington
Louis Robert Diaz
Mark F. Douglas
Robert J. Hilsky, Jr.
Vincent A. Hoover
M. S. Mandell
Michael G. Marino
Marian J. Paeth-Burton
Jerry Pedrero
W. M. Rea
Richard F. Rockwell

'77

Jon C. Arnold
Kathy (Erickson) Bartalino
Francis D. Chatigny

Howard Fineman
Gerald L. Gillis
Samuel E. James
Lila (Faulk) Johnson
Charles M. Linville
Norma E. Lurie
Marc W. Malavasic
Jerome Matisak
Linda (Como) Matisak
Lueretha C. McCray
Nancy (Rubenstein)
Messham
Rezia (White) Olson
Frederick C. Sundberg
George W. Suter
Jerome R. Taylor
William G. Thomas, Jr.
Josephine (Rey) Yglesias

'78

Xavier F. Cannella, Jr.
Robert F. Cascella
Paul S. Charpentier
David W. Devine
Alfred R. Dickey, Jr.
Andrew P. Dwork
Neal S. Elosge
William F. Hawk
Sylvia (Alonso) Henry
Connie Kone
Cheryl (Adams) Mogul
Tim J. Pelot
Rennie K. Poirier
Clovis D. Rusk
Carl U. Smith
Margaret (Thompson)
Stumbo
Peggy (Foster) Webb
Beverly (Roy) Williamson

'79

Frederick W. Alf, Jr.
William J. Counihan, III
Gini L. England
Garry A. Flowers
Bob Gelzheiser
David A. Kinser
James T. Pate, Jr.
Shirley Trzaska
Stephen J. Williamson
Charles E. Wolfe

'80

Dale W. Allen, Jr.
Thomas E. Birmingham
Anna M. Cline
John Francis Farnham
Gonzalo C. Garcia
Kris Douglas Kelley
Roy C. Kiser
Michael C. Lauder
Edward R. Lowy
H. Joseph Middendorf
James P. O'Drobinak
Katherine Fox Pekny
James C. Preston, Jr.

Continued from Page 25

David R. Schulz
Amy Minoff Southard
C. Michael Sunderland

'81

Charles E. August, Jr.
Susanne Bell
Larry W. Bryant
Norma Caltagirone
Daphne (Pappas) Darden
Rafael Diaz
Daniel P. Fagan
Matthew S. Fisher
Gail (Andrews) Landers
Frederick G. Little
Linda (Pearlman) Pickel
Christopher Popik
Kristen J. Price
Carl David Ross
Rayma (Downey) Santos
Marc D. Sarnoff
James M. Shattuck
James W. Vondrak
Sheila (Norton) Winshurst
Richard J. Zeitler

'82

William H. Bellis
Edward S. Ciocys
Marietta B. Crosby
H. Lee Culbreath, III
Patrick A. Davis
Ralph L. Gonzalez
Larry L. Hatlestad
Amy (Hill) Hearth
Aaron W. Hendry
William B. Hungerford, Jr.
Gary W. Kleinman
John P. Lowth, III
Sharon J. Lynch
Michael J. Macaluso
Elizabeth (Gavula) Martin
Stephen C. McNutt
Melodee E. McThenia
James R. Mellaci
Nicholas F. Mooney
Mary Mott
Donald M. Nairne
Paul C. Petti
David W. Queen
Catharine (Purcell)
Reynolds
John C. Roberts
Bethany (Flint) Simmons
Michael S. Southard
James R. Verkler

'83

Robert E. Bodmer
F. Chris Catanach
Heidi C. Conger
Charles A. Friesema
Rosemary Gecan
Anthony V. Greco
Susan T. Hamer

Heather (Towle) Hamilton
Mark J. Hamilton
Mary J. King
Amy Wagner Kirkland
Lisa Rosen Lievense
Robert J. Muir
Peter E. Murray
Mark Novak
Cherlyn Paul
Paul A. Pollak
Lisa (Tollinger) Rorrer
Steven M. Rorrer
Jean Magi Ryan
Leslie Ann Steward
Jeremy S. Tyree
Louise E. (Gilbert) Warner
Geoffrey A. White

'84

Thomas P. Bennett
Rock A. Blanco
Kristin K. Cox
G. Maurice Curtis
Myrna De Jesus Flynn
Joseph J. Dibari
Keith R. Erickson
Paul M. Githens
Thomas M. Janton
Laura (Bernon) Kleinman
Ludwig J. Mazur
Karen A. Monz
Michelle Obremski-
Bugaski
Christopher M. Pastina
Kirby R. Ryan, Jr.
Anita K. Scharf
Patrick O. Schneider
Diane Senechal
Jeffrey L. Wells

'85

Miguel Acosta
Jack A. Arnold
Lisa (Douglas) Bednar
Cathleen (Moran) Elisha
Brian L. Groene
H. Wayne Huizenga, Jr.
Mark M. Kane
Suzanne K. Klepacky
Carol Moses McTamney
Lloyd T. Murphy, III
Sandy (Lofland) Payne
Christina P. Petti-Shahum
Ralph Poetsch
Moses J. Sawney
Marcelo J. Sempe

'86

Rebecca L. Abdoney
Jill (Henry) Aufiero
Kathryn Anne Chambliss
Jay M. Chrobak
Barry W. Curewitz
Melissa (Levin) Curewitz
Chris B. DeBellevue
John T. Duff

Erica L. Edwards
Charlene (Gibney) Frazier
Chantelle (Hernandez)

Groene
Kenneth M. James
James T. Kelly, Jr.
Helen T. Kerr
Daniel R. LeClair
Shel McGuire
Barbara Haskins
Oberman
Lucile (Lawson) Pignataro
Thomas Anthony
Pignataro
Carolyn B. Rabun
Neil Starr
Frank R. Sylvester

'87

Elizabeth (Lombardo)
Boudreau
Kevin E. Brown
Jeffery A. Carter
David A. Cowdrick
Ann (Watson) DeBellevue
Kimberly F. DeShong
Kathleen Mary Egan
Brenda Foody
Christine Bradley Gagnon
William G. Gieseck, Jr.
William W. Godfrey
Jeffrey L. Goss
Charlotte (Henry) Grant
Gloria J. Griffith
Matthew M. Haley, IV
C. Michael Halfast
Denise Fenimore Halfast
Dan S. Ho
Joseph M. Hyer
Katherine (Hendrix)
James
Mark F. Lapp
David J. LoNigro
Ellen Batsavage LoNigro
Ronald R. McClarin
Thomas O. McDonald
Susan Anderson (Lucas)
Meade
William M. Mulholland
Eric Robert Nordheim
Edward C. Pierson
Jill Kirby Platts
Joseph T. Potuzak, Jr.
L. David Richardson
Andrea (Katz) Saltzman
Gerald R. Scara
Arni Sigurdsson
George E. Vallejo
Allison E. West
Scott D. Wilson
Joseph P. Wright

'88

Kimberly (Patterson)
Ainsworth
Donna (Niedens)
Alexander
Renee Morgan Brown
Gloria Carper

C O N T R I B U T O R S

Dana L. Crosby
Pamela J. Davis-Diaz
Wayne A. Fuller
Randal E. Gassman
Philippe G. Hills
Lynnette Hirth
J. Seth Huston
Catherine A. McGarry
David B. McLaughlin
Kristine (Tantsits)
Moscatoello
Gregory K. Nordheim
Aurelio Prado, Jr.
Patrick R. Repka
Karen (Costa) Russo
Casey J. Schoen
Lisa D. Shetter
Katherine M. Smith
Daniel Traugott
Bruce A. Wilkie

'89

J. Craig Ainsworth
William K. Askew
Margaret G. Boris
Terence R. Brown, Jr.
Thomas R. Brown
Tammy J. Buchan
Ann Marie Cascella
Lisa Jeane (Owen)
Churilla
Glenda Clare
Brenda V. Ellison
Maureen A. Fahey
James T. Greene
Marco T. Gutierrez
Dana L. Hess
Jaimi Dean Hyer
Therese M. Kominski
Juliet LaDouceur
John M. Lowe

Tino Martinez
Christopher R. McNulty
Blace A. Nalavany
Donna B. Popovich
Maria Prado
Lorraine K. Rafter
Scott A. Schneider
Karen M. Simon
Elliot S. Smerling
Stephen R. Stonewell
Catherine Hays Wellen

'90

Laura E. Atteberry-David
Cristin Marie Barth
Stacey L. Blackwood
Cary M. Bogue
Donald Bridges, Jr.
Stacia Lyn Bryan

William Cash
Linda H. Catanach
Michele M. Coneys
Patrick K. Curran
Catherine M. Diedrichsen
Jerome T. Flynn, Jr.
Pamela (Dawson)
Johnston
Greg K. Landmark
Eric A. Magendantz
Stephen H. Mauldin
Susan S. McLain
Donald M. Metzger
Tamami Naito
Tiffany J. Nelson
Thomas A. Pignataro
Diane W. Platau
Kristianne Rapp

Mitchell Jay Rosensweet
Phillip L. Rosing
Lori Reith Schneider
Kurt R. Schuldes
Timothy R. Trzcinski
Elaine R. Watson

'91

Maureen Avila
Lakshman P. Batni
John B. Cameron
Beth-Anne Clancy
Ilena R. Couret
Mark A. Humphreys
Raymond Ingersoll
Robyn Lutzk
Laura L. Meisler
Lora V. Motyl
Brenda K. Pancoast
William F. Scholze, III

1991-92 PARENTS' ASSOCIATION DONORS

Anonymous
Carlos A. Araujo
SFC Estaban Arroyo
Mr. and Mrs. Charles E.
August, Sr.
Mr. and Mrs Bruce
G. Berger
Mr. and Mrs. E. F. Bills
Mr. and Mrs. Eugene
P. Blitch
Mr. and Mrs. Joseph Card
Emanuel Cardinale
Bruce and Elizabeth Carp
Jean C. Carpenter
Alton and Joyce Carver
Mr. and Mrs. Eugene
J. Casey
Joseph H. Chambers
Jim R. and Glenda Clare
Richard L. Cohen
Susan G. Courtney
Dr. Stanley T. Crooke
and Dr. Roseanne
M. Crooke

Donald and Elaine Crowley
Ruth L. D'Angelo
Peter Dartley
Dr. Vincent H. DeCaprio
Gilbert and Loretta DeMeza
Dr. William H. DeVries
Phillip and Bonnie
Eppenstein
C. Steven Finney
Mr. and Mrs. Donald
P. Heald
Ernest and Barbara
Hetrick
Robert P. Hoenscheid
Mr. Robert B. Ilderton
James A. and Linda Ingram
Ann K. Izmirlian
Manuel Junco, Jr.
William F. Kailing
Eric Kaltman
Royce Kanofsky
Bentley F. Kaplan
Mr. and Mrs. Richard
C. Kelsey

Richard A. Kerstein
Phyllis J. Kimel
Albert J. and Skaye Kirk
Mr. and Mrs. Fred Knox
Michael J. and Judy
Kosiba
Pedro Lopez
George J. Lorenz
Mr. and Mrs. John
M. Luther
Donald A. and Joan
V. MacCuish
John R. Madden
Nilda R. Martin
William E. Marvin
Wayne N. and Betty
S. Marx
Dr. Paul S. Michaelson
Mr. and Mrs. Robert
Monastero
Dr. and Mrs. William
L. Moore
Frank H. Muckel

Lois W. Pauchey
Paul E. and Ruth L. Popp
Cathy Rendle
Michael V. Roberts
Bill and Beverly Roberts
Gregg B. Robins
Evaristo L. Rodriguez
Alan F. Roessler
Nancy C. Rogers
Dr. Thomas V. Rossi
William R. Roth
Dr. and Mrs. David
G. Ruffer
William and Mary
Schmitz
Frederick E. Scholze
Andrew J. Schroder
David J. Sheehan
Patricia C. Sheehan
Mr. and Mrs. James
A. Singer
Dr. D. Gregory Singleton
Donald L. Small

Paul H. Smith, Jr.
Mr. and Mrs. William
T. Snyder
Selma Starr
Mr. and Mrs. Joseph
T. Steuer
George W. Streff
Dr. Beresford M. Swan
Mr. and Mrs. Jim J. Tozzi
Dr. Michael H. Truscott
Robert and Carol Ann
Vitols
Dr. Harry G. Walling, Jr.
Jerry W. and Karen
G. Waxberg
Andrew H. Weinstein
Mr. and Mrs. William
S. Weprin
Lynona D. Woodbury
Michael C. Zerofsky
Fred R. Zimmerman
Paul N. Zimmerman
Stephen B. Zimmerman

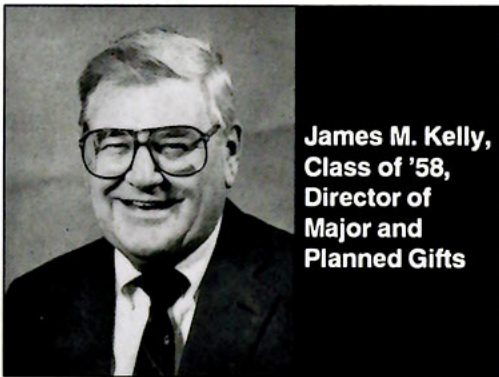
COMPANIES THAT PARTICIPATED IN THE MATCHING GIFTS PROGRAM DURING FISCAL YEAR 1991-92

Aetna Foundation
Allstate Foundation
Arthur Andersen and Company Foundation
AT&T Foundation
Ball Corporation
Barnett Bank
Beech Aircraft Foundation
Citizens & Southern Trust Company
Conoco, Inc.
Deloitte & Touche Foundation
Dun & Bradstreet Corporation Foundation
Ernst & Young Foundation
First Kentucky National Corporation
Ford Motor Company Fund
General Electric Foundation

General Mills Foundation
GTE Foundation
Hartford Insurance Group Foundation, Inc.
Hoffman LaRoche, Inc.
Honeywell Foundation
International Business Machines Corporation
Johnson & Johnson
Joseph E. Seagrams & Sons, Inc.
KPMG Peat Marwick Foundation
Martin Marietta Corporation Foundation
McDonnell Douglas
Metropolitan Life Foundation
NCNB Corporation
Philip Morris Company, Inc.
Price Waterhouse Foundation
Promus Companies

Searle
Shawmut National Corporation
Shearson Lehman Brother, Inc.
State Farm Companies Foundation
The Baxter Foundation
The BOC Group
The Chase Manhattan Bank
The Merck Company Foundation
The New England
The Prudential Foundation
Times Mirror
Times Publishing Company
US West Foundation
Winn-Dixie Stores Foundation
Yale Security, Inc.

Legal Ways to Give and Take



James M. Kelly,
Class of '58,
Director of
Major and
Planned Gifts

As I contemplate preparing this article the Democrats have concluded their convention in New York City and elected Bill Clinton and Al Gore as their standard bearers. Ross Perot has withdrawn and the remaining candidates have a long, hard, road ahead of them. I'm sure that two subjects, tax reform, and reducing the deficit will be in the limelight between now and November.

We last revised our tax laws in 1991, increasing the top income tax bracket to 31 percent. As a result of that change, Federal tax receipts did not materially improve (we're in a recession) and the deficit increased.

Let's review the avenues that are still available to anyone contemplating a charitable gift. Gifts of cash are still the top choice of most donors. Grantors may also establish a Charitable Lead Trust (the charity gets the income for a specific number of years and then the principal reverses back to the donor) or a Charitable Remainder Trust (the donor receives the income during his/her lifetime, and upon his/her death, the principal is distributed to charity).

A donor also may establish a Guaranteed Annuity Fund which pays a predetermined dollar amount, or create a Unitrust and the donor receives a percentage of income based each year on the market value of the principal.

All of these methods of gifts have been reviewed in earlier columns. The point here is that these methods are still legal ways to reduce your estate and income taxes, but may disappear in the next

revision of the tax code. If any readers want specific information on any of these methods, please drop me a line.

A great deal of interest has been indicated in gifts of real estate to favorite charities. Don't be too disappointed if your charity proceeds very slowly with a proposed gift of real estate.

Most charities will want to see some sort of environmental survey on property. These surveys are usually prepared by geological engineers and stipulate that the soil on the property is not contaminated. In addition, the court systems have held property owners liable for soil contamination, so charities are not very enthusiastic about accepting gifts of real estate. The donor must bear the cost of an appraisal.

You also may contemplate making gifts of personal property. Perhaps you are purchasing new office furniture; the furniture you intend to get rid of could be used by a local charity. The same could be said of new dictating equipment, new computers, etc.

Many years ago I served as president of the local Boy Scout Council. Our Council Executive always carried a card in his coat pocket displaying his "wish list." In all my years with the Council, I can't remember the Council buying office furniture or equipment. If you have excess furniture, give your charity a call; they will appreciate it.

Last year we had a donor give us an automobile. We drove it down to an automobile dealer who sold it for us. We issued a receipt to the donor for the amount of cash we received from the sale of the vehicle.

Most school libraries are always looking for books. Exclude text books, however.

Schools won't appraise books for you (you'll have to do that yourself), but they will be anxious to take your books.

Another way to help schools is to make a memorial gift to the library when a close friend passes on. Such a gift is a long-lasting tribute. Many of our friends follow this practice.

Life insurance policies are another way you can make gifts to your favorite charity. Assume your family is educated and grown, and that a life insurance policy that you purchased some 20 years ago to educate your family is not needed for that purpose. If you decide that you don't want to make any more premium payments, you can convert your present policy to a paid-up policy (for less than face value). By then assigning the policy irrevocably to your charity, you get an income tax deduction equal to the interpolated terminal reserve value of the policy. Your insurance salesman would be glad to handle the assignments of the policy and obtain the value of the policy for you.

If you assign ownership of the policy to your charity and name the charity beneficiary and continue to make premium payments, you will be able to deduct those premium payments as current gifts.

As you contemplate a gift program, be sure to consult with your attorney, tax advisor, insurance salesman or other financial advisor. At the beginning of this article, I mentioned that gifts of cash represented most of the gifts we receive. It may not be in your best interest to make a cash gift.

Let's suppose you want to make a gift of \$5,000. If you make a gift of stock that has a market value of \$5,000 but only cost you \$1,500, it would be wise to consider the gift of stock. You would get a charitable donation of \$5,000 and would not incur any capital gains taxes.

On the other hand, if the stock you wish to donate is worth less than you paid for it, you are best advised to sell the stock so that you can take advantage of the capital loss and give the charity cash.

Finally, you can make charitable gifts under the terms of your will. Your attorney can review the tax benefits of such gifts. Hopefully, the tax laws won't change no matter which candidate gets elected. If you want to be sure to have the tax benefit of a charitable gift, I suggest you make it before the election. **UT**

CALENDAR OF EVENTS

Campus-Wide Events . . .

All events are free unless otherwise noted. Tours of Plant Hall, 1:30 p.m. Tuesdays and Thursdays. Meet in Lobby.

- Oct. 16 Tampa Greyhound Track benefiting UT Scholarship Fund; sponsored by national Alumni Assoc. and Tampa Alpha Chapter; dinner and admission, \$10, 6:30 p.m., make reservations by Oct. 13 with Alumni Relations Office, 253-6268.
- Oct. 26 Faculty Honors Lecture Series: Analysis by Design: Biomechanics of Specialized Feeding Strategies in Snakes, by Dr. Fred Punzo, dana professor of biology. Refreshments and discussion follow slide presentation. Trustees Conference Room, 4 p.m.
- Oct. 30 to Nov. 1 Family Weekend
- Nov. 4 Executive-for-a-Day reception, 5:30 to 7 p.m., Dome Theatre.
- Nov. 9 Faculty Honors Lecture Series: Forces That Shaped the 60's by Dr. Michael Mendelsohn, professor of English. Refreshments with discussion. Trustees Conference Room, 4 p.m.
- Nov. 12 Board of Fellows Business Network Symposium, Ballroom, 7:15 to 8:30 a.m.
- Nov. 16 Honors Program Lecture Series: Your Mythic Journey, participants will view and discuss conversation between Bill Meyers and Sam Keen encourage us to explore our lives as on-going narratives. 5 p.m. Discussion and "Mythic Pizza," treat by Honors Program, 6 p.m. Honors Program Film Festival, Hear My Song, Sword & Shield Room, 7 p.m.
- Nov. 19 Faculty Honors Lecture Series: Revolution in Africa: Africa Revisited, by Dr. Mark Lombardi, assistant professor, political science. Refreshments with discussion, Trustees Conference Room, 7 p.m.
- Nov. 21 Tampa Alpha Alumni Chapter sponsoring Annual Fund Raiser, \$10,000 grand prize. Cocktails and Hors d'Oeuvres, Fletcher Lounge. 8 p.m. Call Alumni Relations Office, 253-6268
- Nov. 25 to Nov. 27 Thanksgiving Holidays - no classes; offices closed
- Nov. 30 Classes resume
- Dec. 1 Faculty Honors Lecture Series: The Former Soviet Republics: Cultural and Linguistic Revolutions in Moldova (formerly Moldavia), by Dr. Thomas J. Hegarty, provost and professor of history. Refreshments with discussion. Trustees Conference Room, 7 p.m.
- Dec. 5 Open house for students and parents from Hillsborough, Pinellas, Pasco, Hernando, Polk, Manatee and Sarasota, Scarfone Gallery, 4 p.m.
- Dec. 11 Classes end
- Dec. 12 Commencement, Falk Theatre, 2 p.m.
- Dec. 24 to Jan. 3 President's leave - University closed.

In the Gallery . . .

Open 10 a.m. to 4 p.m. Tuesday through Friday; 1 to 4 p.m. Saturday. No admission charge.

- Oct. 16 James Bojarzuk, painting; Charles Parkhill, sculpture. Reception: Oct. 16, 7 to 9 p.m.
- Nov. 20 Bonnie Van Allen, sculpture. Reception: Nov. 20, 7 to 9 p.m.

Musical Notes . . .

- Oct. 17 Pre-college recital, 2 p.m., St. Andrews Episcopal Church
- Oct. 28 Student recital, 3 p.m., Ballroom
- Nov. 8 King of Instruments, III, Celestial Galaxies, Dr. David Isele, organist; 4 p.m., Sacred Heart Church
- Nov. 11 Student recital, 3 p.m., Ballroom
- Nov. 14 Pre-college recital, 2 p.m., St. Andrew's Episcopal Church
- Nov. 16 *Spectrum* Contemporary Ensemble, 8 p.m., Ballroom
- Nov. 22 Tampa Arts String Quartet, 4 p.m., Ballroom
- Dec. 5 Pre-college recital, 2 p.m., Ballroom
- Dec. 6 Annual UT Christmas Festival, 4 p.m., Sacred Heart Church

Henry B. Plant Museum . . .

Open 10 a.m. to 4 p.m. Tuesday through Saturday. Suggested donation \$3/adults; \$1/children

- Nov. 7 Antiques appraisal session (\$5/item), 10:30 a.m.
- Nov. 20 Arthur Rackham's "A Christmas Carol" and "Night Before Christmas" prints. Also antiques from private collections.
- Dec. 1 to 21 Victorian Christmas Stroll: \$5, 1 to 9 p.m. Museum store is open for shopping from 10 a.m. to 5 p.m. without a \$5 charge.

Spartan Sports Scene . . .

The following schedules are for home games only. For more information, call the UT Athletic Office at (813) 253-6240. *Sunshine State Conference games. General public admission, \$5; Senior Citizens, \$3; Students, Faculty, Staff, free with I. D.

Pool Hours: Monday to Friday, 10 a.m. to 3 p.m.; Saturday and Sunday, 10 a.m. to 4 p.m.

Basketball: Games played at Martinez Sports Center; Women, 5:30 p.m.; Men, 7:30 p.m.

- Nov. 30 Webber College (M)
- Dec. 2 Florida Memorial College (M)
- Dec. 4 & 5 UT Invitational (W), TBA
- Dec. 5 North Central College (M)
- Dec. 7 West Georgia College (W); Augustana College-SD (M)
- Dec. 11 Edward Waters (M)
- Dec. 28 Rose Hullman Institute of Technology (M)
- Dec. 30 University of Michigan - Dearborn (W); Quinnipiac College (M)

Soccer: Games played at Pepin Rood Stadium, 7:30 p.m.

- Oct. 23 Butler
- Oct. 30 Puma Classic: FIT vs. Nemo, 5 p.m.; Tampa vs. UMSL, 7:30 p.m.
- Oct. 31 FIT vs. UMSL 5 p.m.; Tampa vs. NEMO, 7:30 p.m.
- Nov. 14 NCAA Regional Tournament, TBA

Volleyball: Games played at Martinez Sports Center, 7:30 p.m.

- Oct. 16 Tampa Classic, TBA
- Oct. 23 & 25 Tampa Prep Invitational, all day
- Nov. 11 University of North Florida
- Nov. 16 St. Leo College
- Nov. 21 Florida Southern
- Nov. 27 NCAA South Region-1st round, TBA
- Nov. 28 NCAA Region Championship, TBA
- Dec. 5 NCAA Div. II Championship, TBA

In the Falk Theatre . . .

Friday and Saturday performances, 8 p.m.; Sunday performances, 7 p.m.

- Nov. 12 UT fall student production of A.R. Gurney's *The Dining Room*
- Dec. 4 to 6; 11 to 13; 18 to 20 An original adaptation of Truman Capote's *A Christmas Memory* by Gary Luter and Anna Brennen



- Send orders accompanied by payment (no C.O.D. orders accepted.)
 - Make checks payable to: **The University of Tampa • Campus Bookstore**
 - Mail this order to: **Campus Bookstore • The University of Tampa
626 West North B Street • Tampa, FL 33606-1490**
 - Phone Orders: (813) 253-6230 or fax: (813) 254-6215
- Ship to: