



# NEWS *and* VIEWS

OF THE UNIVERSITY OF TAMPA

VOL. 3 — NO. 2

TAMPA, FLORIDA

JUNE, 1961

## A Glance at the Past -- A Glimpse into the Future

### COMMENCEMENT 1961

The Annual Commencement exercises were held at 10 o'clock on the morning of June 5 in the Britton Theatre, Britton Plaza.

The principal speaker was Dr. Joseph P. McMurray, President of Queensborough College in New York and recently appointed Chairman of the Federal Home Loan Bank Board. He was granted the honorary degree of Doctor of Literature.

A distinguished Tampa alumnus, Dr. George Truman Hunter, received the honorary degree of Doctor of Science for his research contributions in the field of electronic computation.

Two hundred ninety-seven degrees were awarded to graduates. This year for the first time, graduates in the MacDill Program of the Evening Division participated in the Commencement Exercises.

### The Commencement Calendar

The Annual Alumni Reunion was held on the evening of Friday, June 2, in the Palm Room of the Tampa Terrace Hotel. On Saturday afternoon, President and Mrs. DeLo were hosts to the graduating class and their parents at the President's home. Baccalaureate was held on Sunday, June 4, at 5 p.m. in Plant Park, with the sermon delivered by Reverend Preston B. Sellers, Pastor of the First Baptist Church.

This was a colorful and highly successful commencement weekend and many friends and alumni of the University attended one or more of the events.

### HIGHER ADMISSIONS STANDARDS

The Admissions Office has worked at increasing tempo during the past few months and reports that the University of Tampa is receiving inquiries and applications from greatly increased numbers of students throughout the eastern half of the United States. At present, applications received are 55% greater than a year ago, and it now appears that we will accept a freshman class somewhat larger than the one which entered in September, 1960. Admission standards have been increased so that approximately only two out of every three applicants are being accepted, according to Assistant Director of Admissions, Eduard Van Gelder.

This issue of NEWS AND VIEWS summarizes events, activities and work accomplished during the past twelve months. We are grateful to the many friends whose financial support, encouragement and assistance made this progress possible. With them we look forward to the future with optimism and expectation.

DAVID M. DELO, President



### LATIN AMERICAN EXCHANGE STUDENT

Through the generosity of Mrs. Alma Stanley of New York, the University will bring to the campus on scholarship Louis Biava from Bogota, Columbia, who is Assistant Concertmaster of the Symphonic Orchestra of Columbia, and first violinist of the String Quartet of Bogota.

Mr. Biava will attend classes at the University, play in the Tampa Philharmonic Orchestra, and be a member of the University of Tampa String Quartet.

### SUMMER SESSION OFFERS VARIED FARE

One hundred eleven courses in 18 fields will be offered during the annual Summer Session which opens with registration on June 15-16. Of the above courses, 37 will be offered by the Evening Division for those who wish to work during the day.

Although the courses offered cover most of the normal fields in the University curriculum, particular attention is paid to courses for teachers and those engaged in business.

Director of Admissions Willis J. Dunn reports a large number of applications received.

### "CULTURED" CLASSROOMS

In the belief that those things which are experienced and lived with are more easily understood, appreciated and absorbed, the University is planning, with the help of community friends and organizations, to convert a group of classrooms to represent the cultures of various countries throughout the world. These rooms will be symbolically designed and appropriately furnished. Each will contain a special library, describing the history of the particular nation and its people, and their contributions in the fields of art, literature, music, and architecture. These rooms will continue to be used for classes and seminars as well as meetings for town groups. They should promote a closer relationship with other peoples of the world, particularly those of other nationalities who live in our community, and who attend our University.

The University is proud to announce that the first of these rooms, "The Israeli Room" will be created in June, as a project of the Tampa Bay Chapter of the Zionist Organization of America who have already raised funds for this purpose. Symbolic of the new nation, and the cultural contributions of its people, this room will add to the beautification of our main building as well as to knowledge and understanding of the Hebrew people.

We look forward to working with other community organizations in developing similar settings depicting the cultural contributions of other peoples.



# Moving Forward *Math Lang. & (321) 1961*

## NEW SPACE FOR MUSIC

Eventually we will have a Fine Arts Building especially for Music and Art, two of our most rapidly expanding programs. Until that time, we have made a major conversion of one-half of the fourth floor of the Main Building, creating offices, studios and practice rooms for music. Rooms have been renovated and painted in soft grays, floors carpeted with hundreds of yards of carpeting contributed by friends of the University. Some rooms are sound-proofed. A number of practice pianos and new band and orchestral instruments have been added, although others are needed.

The temporary building, known to three generations of students as the "G.C.R. Building" was reconverted last summer and renamed the "Music Annex". The main portion was moved so that one room could be equipped with a stair-step curved floor for the use of music classes, chorus, orchestra and band. Now repainted, furnished with venetian blinds and new chairs with retractable tablet arms, the room serves for the new required music classes in creative listening as well as practice for the musical organizations named above.

An excellent stereophonic player and storage cabinets for a large collection of teaching records were contributed by the University of Tampa Associates.

Although still much too small and much too warm in the spring and fall, this new classroom is serving admirably as a temporary facility.

## YOU WOULDN'T RECOGNIZE IT—BIOLOGY

A major renovation, made possible by gifts from the facilities fund, took place in the Biology Department last summer through the untiring efforts of Dr. Charles Walker and members of the department.

Laboratories, lecture rooms, offices, storerooms, and storage cabinets were painted. Tile floor was laid in the lecture room and in Dr. Walker's office. The large lecture room was cleared to accommodate twice the number of students, painted throughout, and equipped with 800 new chairs. Newly created were a bacteriology storage room, a central chemical storeroom, and a rest-room for the faculty.

Purchased were a heater, an air conditioner, four new sinks, three mobile blackboards, 16 new lab tables, two audio-visual screens, 2 lecterns, and a glass-fronted bulletin board. A 64-drawer storage cabinet was constructed, four microscope cabinets were repainted, and eight new doors were installed on storage closets. Every piece of equipment was cleaned, and hundreds of items of glassware were washed and stored.

*"Things are happening at the University of Tampa"*



Presidents of the Circle K and Alpha Phi Omega present to Dr. Delo a check to pay for the sod.

## "AND THERE WAS LIGHT" In The Library

Thanks to the contributions of interested Tampa citizens, the University Library has been adequately lighted. Special fluorescent lights were designed, which now flood the individual reading tables.

Noiseless rubber tile floor covering was laid and 24 new book stalls were built. Four special record players were installed, each with 6 earphones, to allow 24 persons to listen at one time. The record library was expanded, a great boon to music students and those studying languages.

Although the library now contains 60,000 volumes, we recognize its physical limitations which loom significantly in our long-range development plans.



New lights in the Library make studying easier.

## "THE GREEN GRASS GROWS ALL AROUND"

During the early days of the Tampa Bay Hotel, its grounds, visited by thousands of tourists, were as famed as its architecture and luxurious furnishings. Gradually over the years, with less care and declining rain, the green beauty diminished to sandy wasteland.

Things are different now. Thanks to people who care, a beautiful oasis has been created. Mrs. Wallay Phillips, a public-spirited Tampa Bay citizen, has given the University what has been termed by one landscaper, "a gift of a lifetime." She has contributed hundreds of azaleas which she herself planted and raised. From the generosity of her heart, she gave these shrubs, representing a lifetime of love and effort, to the people of Tampa.

A civic-minded Tampa landscaper, chagrined at the neglect of years, and more interested in the beautification of the city than in his own remuneration, created a carefully laid out plan of future planting, and transplanted these azaleas on a cost basis. He also motivated and supervised the efforts of the Tampa Bay Chapter of the Florida Nurserymen and Growers Association. Members spent many a Saturday at the University planting their gifts in the form of a tropical garden, consisting of specimen plants.

Meanwhile, the Maintenance Department of the University found it necessary to keep ahead of the extensive planting by installing water outlets and pumps for adequate irrigation, and by doubling the gardening help.

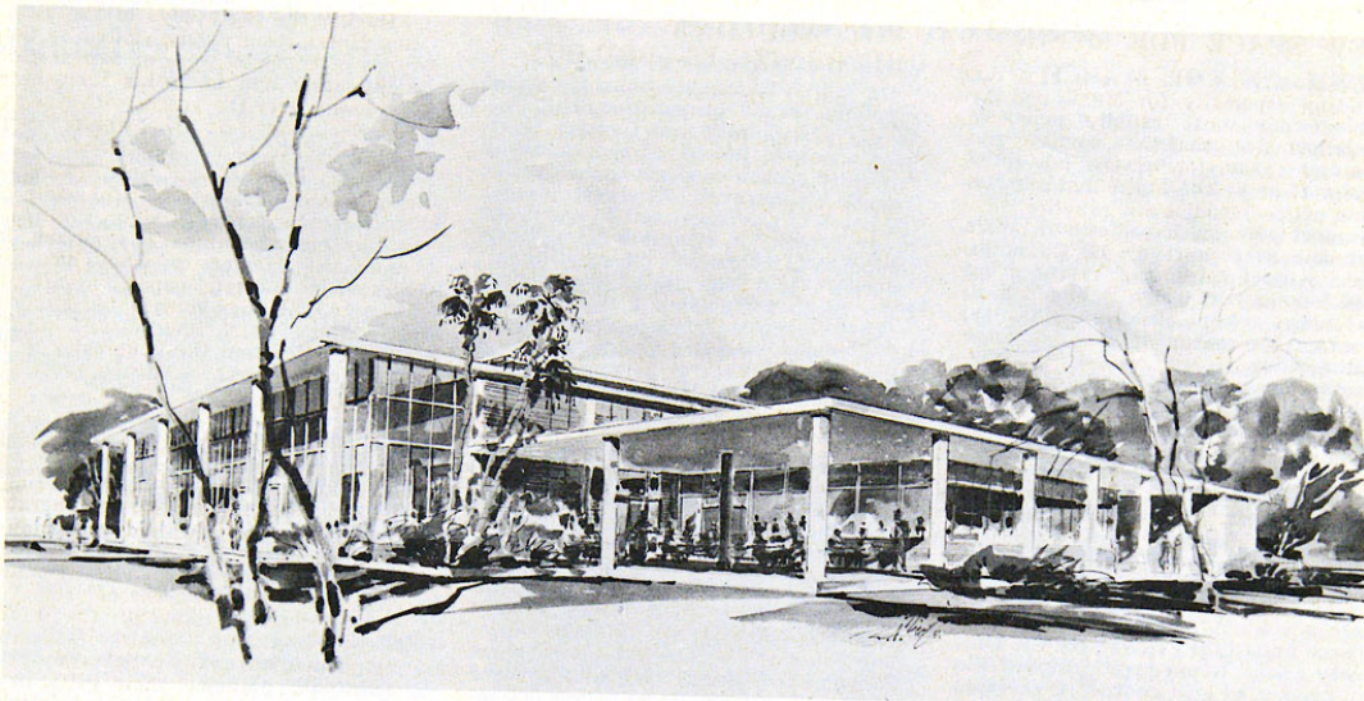
The City cleared the scraggly planting on the park drive in front of the building, laid a straight, newly-paved road complete with gutters, drains, curbing and sidewalks. This inviting, broad street is now named "University Avenue".

"The green grass (which now) grows all around" is gift grass, the gift of student fraternal organizations, APO and Circle K, and from a sod company.

The City has recently installed ornamental lighting on University Avenue. Now we are searching for a donor who might wish to memorialize a loved one by floodlighting the beautiful minarets, that they may shine out over the city, a beacon and symbol of Tampa.



# New Student Center - A Necessity



Student Union to be completed January 1962.

It is most appropriate that we expect to build on the historic site of the Old Tampa Bay Casino in Plant Park, facing the Hillsborough River, a beautiful and functional, air-conditioned Student Center. This site was the scene of Tampa's early cultural, recreational and social life. On it, the young men and women attending the University of Tampa will soon have modern facilities which will provide for these same purposes, and in addition, attractive dining quarters.

Tampa will be proud of this building, imaginatively designed by Eliot Fletcher. Its vista will be a great asset from downtown Tampa. Its rooms will welcome visitors.

In addition to a large dining room, with cafeteria service to serve 500, a snack bar, two small private dining rooms, and a covered dining terrace, the Center will contain a bookstore, a

post office, a lounge for reading and music listening, a small art gallery, and several student meeting rooms.

The building must be completed by January, 1962, to provide for the 800 non-commuting students who will be attending the University from 38 states and other countries at that time.

A federal loan has been reserved to cost, which may be amortized yearly. The remaining one-quarter plus the cost of the furnishings will be secured from friends and those who believe in private education.

## Additional Building Plans

To provide a modern, well-equipped, effective campus, other buildings must also be added. We must replace the unsightly frame temporary buildings,

no longer adequate in size and function to serve an expanding program and growing residential student body. To this end we are working closely with city planners, to create a distinctive University campus in the heart of the city. The core of this modern functional campus, regardless of additions or replacements, will always be the Tampa Bay Hotel, dear to the hearts of many Tampa people. It will continue to serve as reception, administration and classroom center. With the help of interested friends, we will continue to restore its interior, making it more functional, and accenting its architectural beauty and physical setting.

Future campus plans will include a Science Building, a Fine Arts Center, a Library. Wings will be constructed on each of the two new dormitories beginning this summer.

## LYKES HALL

The largest single gift ever received by the University from a local donor was contributed during 1960 when the Lykes family gave the Puritan Hotel to the University.

Renovated during the summer of 1960 and renamed "Lykes Hall", it houses 76 men, with adequate recreation and lounge space and has made a significant addition to the greatly needed living accommodations for students.

## IN MEMORIAM

The Board of Trustees has memorialized two former Board Chairmen by naming the new dormitories in their honor—"McKay Hall" for Kenneth I. McKay, Chairman from 1940 to 1945; and "Smiley Hall" for David E. Smiley, Chairman from 1946 to 1960.



## THROUGH MUSIC

### "MUSIC ON THE MARCH"

This past year; following a policy of enrichment for students, faculty, and community, the University presented a series of varied and excellent musical events.

Clarinet and tuba performers were given the rare privilege of attending three splendid music clinics featuring world famous clarinetist, Reginald Kell, and tuba soloist, Harvey Phillips, brought to the campus by Band Director Hunter Wiley.

In the newly-decorated Ballroom and in the Auditorium, we presented Frank Glazer, concert pianist, who has appeared with the leading symphony orchestras of the world; Edward Vito, harpist; Cherryl Stern, a young, accomplished pianist; Stephen Kovaks, pianist; Carl Palangi, San Francisco Opera Co. basso, and in a lighter vein, Earle Spicer, popular Ballad Singer. In addition, we have had regular monthly student recitals.

Three important FIRSTS for the University Music Department included the performance of our chorus in costume on the coast-to-coast CBS-TV network on Christmas Day, made possible through Maestro Alfredo Antonini, Musical Director of CBS, and Consultant

to our Department of Music.

On March 2, after months of careful preplanning and preparation, the University Community and Concert Choruses appeared in one of the regularly scheduled season concerts with our fine Tampa Philharmonic Orchestra under the baton of the Maestro. The ambitious program included selections from "Boris Godounov", "Nubucco", "La Gioconda", "Norma", and The Hallelujah Chorus from Beethoven's "Mount of Olives".

An evening of contemporary opera by a newly-organized opera workshop group gave delightful performances of Menotti's "The Old Maid and the Thief", and "Sunday Excursion" by Alex Wilder.

The University Band, under the baton of Hunter Wiley, presented an excellent symphonic concert in the Municipal Auditorium.

The oratorio, "St. Paul", by Mendelssohn, was given its Tampa premier performance on November 13th to an overflow audience in the Ballroom.

On May 15, Stephen L. Park, Associate Professor of Music, recently named "Composer in Residence", was honored by the chorus, band, and string ensemble which performed an entire evening of his compositions before an enthusiastic audience.



The University of Tampa Chorus with the Philharmonic Orchestra.

## THROUGH ART

### OUR 1960-61 ART CALENDAR SPEAKS FOR ITSELF

October—International Print Show from the George Binet Print Collection, consisting of fifty prints by outstanding artists from fifteen countries, including Picasso, Roulalt, Leger, Martung, Campigli, Marini, Sutherland, Heller, Siegl, Miro, Pins, and Wou-ki.

November—48 Turkish Miniatures and Calligraphies, collected by Aydin Under, made possible by American Friends of Middle East, Inc.

December—some hundred and fifty paintings and sculptures from the Famous Contemporary Arts of the Arab World Collection.

January—a collection of paintings by Mrs. Leta English Hess, Lecturer in Art at the University of Tampa.

February—exciting modern paintings by University of Georgia students, selected by Lamar Dodd, Chairman of the Art Department.

April—a photography show, Impressions of Iran, a follow-up of last year's Photography in the Fine Arts.

May—annual student art exhibit, including outstanding examples of ceramics, sculpture, painting, mosaic and drawing. One-man shows by John Murray, Ann Marie Regar, Ardis Phi Ardis, and Hannah Stills.

This spring the University of Tampa, jointly with the Tampa Art Institute presented "Modern Art" by Bartlett Hayes, Jr., Director of Addison Gallery of American Art at Phillips Academy; "What is Primitive Art" by Allan D. Chapman of the Museum of Primitive Art, New York City; and "Art of Russia and the Far East" by Lamar Dodd, Director of Fine Art, University of Georgia.



Conductor Hunter Wiley and the Tampa University Concert Band.



# Horizons

## THROUGH THE EVENING DIVISION AND MacDILL PROGRAM

The Evening Division continues to illustrate growth, with 411 corporations partially or wholly supporting the academic work of their employees at the University. The Evening Division classes, from 6:00 p.m. to 10:30 p.m. and Saturday mornings, currently include 18% of the total registration of the University.

The expanded Evening Division organized its own student council and elected its own officers in the Fall 1960 term. In addition to the required Convocations, it sponsored its first dance, which is proposed to be an annual affair.

Operation of the MacDill Air Force Base program by the University of Tampa began July 5, 1960. It has enjoyed steadily increasing enrollment and is now reported to be the largest college program of its type in the Armed Forces. As of June, 1961, 71 individuals will have received baccalaureate degrees under this program during the year.



Above, Sgt. George Lerner, Lt. Col. (now Col.) James Lake, President Delo and Dean Speronis display the Certificate of Achievement received from the Strategic Air Command for the excellence of the program.



Mrs. Alfredo Antonini and Carl Palangi enjoyed this concert, too.

## THROUGH EDUCATIONAL TOURS

To acquaint new out-of-state students with the beauty spots and cultural opportunities within our geographical setting, various departments in the University have organized field trips and visits which have included a day at the Ringling Museum in Sarasota, a trip to Silver Springs, and during Easter, a weekend in Nassau. This month a group visited the International Mineral and Chemical Corporation in the phosphate-producing area near Bartow, Florida. This summer the Spanish Department will sponsor a tour of Spain.



A panel of professors during Pan-American Week.

## THROUGH LECTURES AND INSTITUTES

Because of our geographic location Tampan and students at the University of Tampa have a special obligation to keep informed about trends in Latin America and to be concerned about the welfare of our Latin-American neighbors. With this in mind in March we observed Pan American Week at the University. "Spirit of the Americas" and "Alianza Para Progress" were the themes for a week of classroom lectures, student panels and demonstrations of music, art and customs of the Americas. We brought to the campus Joseph Cortino, Consul from Costa Rica; Earl Mullen, Director of the Pan American Commission; and other Tampa friends, the Robert Thompsons, the B. B. Verplancks, and Jerry Harper of WFLA, who shared with us their wide knowledge of our South American neighbors.

Latin America was the theme also of an October meeting of the newly organized Institute of International Affairs under the chairmanship of James Clendinen, editor of the Tampa Tribune. Speakers for this Institute were Dr. Marcilio M. Moreira from the Brazilian Embassy, Dr. Herminio Portell-Vila, Professor of History at the University of Florida, and Cuban exile Jorge-Zayas. The keynoter of the Institute was Dr. A. A. Lobanov-Rostovsky, Professor of History at the University of Michigan.

The Ballroom held a capacity audience for Dr. Oscar Broneer's lecture in January on "Gods and Games on the Corinthian Isthmus".

Dr. Andrew T. Roy, eminent professor of Philosophy at Chung King College, China, spoke to students and faculty on "College Life in Hong Kong."

Dr. F. W. Kokomoor, Mathematics Professor from the University of Florida delivered the dedication address of the new mathematics laboratory, furnished by the Tampa Rotary Club.

Scientist and author, Dr. Ralph Lapp, spoke to our students in the March Convocation and again to the community in the evening on space exploration.

Dr. Walter Judd, Republican Convention Keynoter, and Mr. John Sharon, Democrat, spoke on highlights of the national election.

Dr. Kenneth Scott, visiting research professor in American History, met informally with students and history classes.

Dr. Leonard A. Larson, Chairman of the Department of Health and Physical Education at the University of Wisconsin, gave several lectures on Research in Physical Education.

British scientist, Dr. S. E. G. Priestly spoke on "Political Science in Today's Crisis in World Affairs."

Dr. Ernest Mayr and Dr. Fillmore N. Sanford were presented by the Psychology Department.

Lectures on Teaching Techniques were given in a Foreign Language Teaching Laboratory conducted by the Radio Corporation of America.

Health Agencies on the community held numerous interviews and gave illustrated lectures during a two day Healthorama.



## PRIVATE ENTERPRISE SUPPORTS PRIVATE EDUCATION

Private higher education throughout the United States is enjoying greater support than ever before from private corporations and private individuals. The list given below includes the corp-

orations and companies, to whom we extend grateful appreciation for their generosity to the University of Tampa during the year 1960. A list of individual donors will be published at a later date.

### HONOR ROLL

Of companies and corporations which contributed to the support of  
The University of Tampa during 1960.

Adams-Magnon Jewelers, Inc.  
Advertisers Mailing Service  
Allen, Dell, Frank & Trinkle  
American Can Company  
Ammons, Phil A., Company  
Anderson, L. M., Dental Supply  
Anderson Surgical Supply Company  
Anheuser-Busch Charitable Trust  
Anthony Distributors, Inc.  
Automatic Merchandising Inc.  
Associated Out Door Clubs  
Belk-Lindsey Department Store  
Belmont Lumber Company, Inc.  
Bentley-Gray Dry Goods Company  
Berger & Rachelson Inc.  
Berry, L. M., and Company  
Best Sundries, Inc.  
Bonacker Brothers, Inc.  
Bogue, Lee, Compton Vass  
Borden's Dairy  
Boyle Motor Company  
Bradley Engraving Company  
Brake Service  
Brandon's Heating & Cooling, Inc.  
Brinen & Sinsley  
Brinson-Allen Construction Company  
Broadway National Bank  
Brown, C. L. Inc.  
Bryn-Alan Studios  
Burnett Brothers Inc.  
Byars-Forgy Inc.  
Caldwell Bonded Warehouses Inc.  
Canada Dry Bottling Company  
Carter, E. A. Brokerage Co.  
Carter, Mary, Paint Factories  
Cecyl's Gift Shop  
Cement Roofing Industries Inc.  
Central Bank of Tampa  
Central Truck Lines Inc.  
Chapman Machinery  
Chemex Industries Inc.  
Coca-Cola Bottling Company  
Colony Shops  
Columbia Bank  
Columbia Music & Appliances Co.  
Commercial Printers, The  
Cone Bros. Contracting Company  
Consolidated Distributors of Tampa, Inc.  
Continental Can Company, Inc.  
Cook Lumber Company  
Copeland's Super Market  
Corral-Wodiska y Ca  
Cralle, Ray B., Company  
Creighton Brothers Awning Company  
Crenshaw-McMichael Seed Company  
Dale Corporation of Florida  
Davis Islands Pharmacy  
Dempsey Chevrolet Inc.  
Diecidue & Company, Inc.  
Dixie Lily Ranch  
Dixie Linen Supply  
Dorothy Fashions  
Dulin Brokerage Company  
Eagle Drug Company  
Eagle Roofing & Art Metal Works  
East Side Sheet Metal Works  
Ellis-Erwin Supply Company, Inc.  
Emporium W. Millinery  
Epperson & Company  
Esso Education Foundation  
Exchange National Bank of Tampa  
Ferlita, G. & Sons, Inc.  
Fiberglas Corporation  
Fillette-Green & Co. of Tampa  
First National Bank of Tampa

Florida Cleaning Service Company  
Florida Clipping Service  
Florida Dairy  
Florida Nurseryman & Growers Ass'n  
Florida Portland Cement Division  
Florida Steel Buildings, Inc.  
Florida Steel Corporation  
Floridan Hotel  
Fluorescent Service Inc.  
Food Fair Stores Inc.  
Fowler, White, Gillen, Humphrey  
& Trenam  
Free Press Publishing Co., Inc.  
Frischia & Martino  
Fulghum's Office Economy Index, Inc.  
Galloway's of Tampa  
Gandy Medical Center  
Gandy Operating Company  
Gardner-Martin Asphalt Corporation  
General Electric Foundation  
General Telephone Company  
General Telephone & Teletronics  
General Welding Supply Company  
Gimpel's Office Supplies  
Gonzalez, A. A., Hospital  
Goodbody & Company  
Goodyear Service Stores  
Gordon, Dave, Steel Products Inc.  
Gradiatz-Annis & Co. Inc.  
Graham-Jones Paper Company  
Graham & Mann  
Greiner, J. E., Company, Inc.  
Gulf Advertising Service Inc.  
Gulf Fertilizer Company  
Gulf Freight Association  
Gulf Oil Corporation  
Gulf Southern Corporation  
Haber's Department Store  
Hammer, John M., Foundation  
Harless, Byron, Associates  
Hartstone Concrete Products Co. Inc.  
Harney & Harney  
Hav-a-Tampa Cigar Company  
Haverty Furniture Company  
Hendry Corporation  
Herman Sausage Company  
Homer F. Herndon  
Hickory Hill Meat Packers Inc.  
Hillsborough County Optometric Society  
Household Finance Foundation  
Holsum Bakers Inc.  
Holtzinger Motor Company  
Home Builders Supply Company  
Hunt Truck Sales & Service Inc.  
Industrial Supply Corporation  
International Business Machines Corp.  
Jacob Brothers, Inc.  
Jai Alai Fronton of Tampa  
Johnson Drug Company  
Johnston Fixture Co. Inc.  
Johnston Lithograph & Engraving  
Co. Inc.  
Jones-Mahoney Corporation  
Karl's Restaurant  
Klay, Joe B., & Sons, Inc.  
Knight & Wall Co.  
Krispy Kreme Doughnut Co.  
Lang, L. F., and Son  
Lanier Company, The  
Lee & Pomeroy Oil Company  
Leeds Shoes, Inc.  
Lenfestey Supply Company  
Lister Furniture Company  
Little Katz  
Local Finance Company

Logan Lumber Company  
Lykes Brothers, Inc.  
Lyons Fertilizer Company  
McAuliffe, Dick, Accounting Systems  
McCarthy, R. E. & Associates  
McAteer, Machine & Welding Works  
Maas Realty Company  
Maas Brothers  
Macfarlane, Ferguson, Allen & Kelly  
Malone, E. B., Co.  
Marine Bank & Trust Company  
Martin's Uniforms  
Martino, Pietro C.  
Mechling Barge Lines, Inc.  
Meighen, Rex, and Company  
Mirabella Fish Company, Inc.  
Morgan Cigar Company  
Musselman Steel Fabricators Inc.  
Mutual Finance Benevolent Fund  
Myrtle Hill Memorial Park Inc.  
National Airlines, Inc.  
National Auto Supermarket, Inc.  
National Cash Register Company  
Newbern Groves  
New Crescent Hotel  
New York Dress Shop  
Northside Bank of Tampa  
Nu-Air Manufacturing Company  
Nuerola Shoe Company, Inc.  
Nutrilite Food Supplement  
Nunn-Busch Shoe Company  
Ocean Products, Inc.  
Office Equipment Company Inc.  
Orange State Casket Company  
Orange State Motor Company Inc.  
Orkin Exterminating Company Inc.  
Otis Elevator Company  
Owens-Corning Fiberglas Corporation  
Padgett-Swann Machinery Company  
Pardo's Market  
Pendola, Jack, Men's Apparel  
Peninsular Fertilizer Works  
Peninsular Paper Company  
Peninsula State Bank  
Penney, J. C., Co., Inc.  
People's Gas System, Inc.  
People's Oil Company, Inc.  
Pepsi Cola Bottling Company  
Peter's Distributing Company  
Pillsbury Company  
Pioneer Tire Company  
Pittsburgh Testing Laboratory  
Porter, G. A. Roofing Company  
Power Flo Manufacturing Company, Inc.  
Protective Coatings, Inc.  
Publix Super Markets, Inc.  
Radiant Oil Company  
Ralar Publishers Inc.  
Raybro Electric Supplies Inc.  
RCA Service Corporation  
Redwing Carriers Inc.  
Reina Brothers & Company  
Richards Drug Store  
Richardson Company, The  
Ricketts Bag Corporation  
Rinaldi Printing Company  
Robbins Manufacturing Company  
Royal American Shows  
Schlitz, Jos. Brewing Company  
Schaarai Zedek Temple Reform  
Schulstad Rambler Company  
Security Mills of Tampa Inc.  
Sears Roebuck & Company  
Seely's Diner  
Self Service Shoe Store  
Seminole Bank of Tampa  
7-Up Bottling Company  
Sevilla Olive Packing Company  
Shackleford, Farrior, Stallings,  
Glos & Evans  
Sherman Concrete Pipe Company  
Showmen Studios, The  
Smith, Arthur, Music Company  
Smith & Braley  
South Atlantic Life Insurance Company  
Southern Mill Creek Products Co., Inc.  
Spada Fruit Sales Agency, Inc.  
Standard Cigar Company



## Honor Roll (continued)

Stanley Hughey Georgia Corporation  
Star Terminal & Warehouse Corporation  
Stovall Cabinet & Fixture Co., Inc.  
Stovall Store Fixture Corp.  
Suarez, C. G., Distributing Company  
Suncoast Fabrics, Inc.  
Sunshine Park Racing Association  
Superior Fertilizer & Chemical Co.  
Tampa Abstract & Title Insurance Co.  
Tampa Armature Works Inc.  
Tampa Bay Bank  
Tampa Coal Company  
Tampa Consular Corps  
Tampa Electric Company  
Tampa Federal Savings & Loan Ass'n  
Tampa Greyhound Track  
Tampa Hardware Company  
Tampa Marine Company  
Tampa Paper Company  
Tampa Radio Sales Inc.  
Tampa Ship Repair & Dry Dock Co., Inc.  
Tampa Soap Corporation  
Tampa Terrace Hotel  
Tampa Wholesale Lighting Fixture and Supply Corporation  
Tampa Wholesale Liquor Company, Inc.  
Taxicabs of Tampa, Inc.  
Tennant Bros. Building Supplies  
Texaco, Inc.  
Thomas Jefferson Hotel  
Thomson & McKinnon  
Tower Drive-In Theatre  
The Tribune Company  
Tropical Garment Manufacturers Corp.  
United Paper Company  
United States Steel Foundation, Inc.  
U. S. Phosphoric Products  
Valenti, J. C., Company  
Vogue Cleaners & Laundry, Inc.  
Von Kienbusch, Inc.  
Walter, Jim Corporation  
Ware Manufacturing Company  
Watts & Keltner, Inc.  
Williams Brothers Motors, Inc.  
Winn-Dixie Tampa, Inc.  
Wolf Brothers, Inc.  
Wohl Louis & Sons, Inc.  
Woodward Crowder Company  
WTVT Television Station

## FACULTY WOMAN'S CLUB

The following officers were elected and installed at the annual luncheon, May 20: Mrs. Harvey E. Maier, Chairman; Mrs. Alan E. Stuckey, Vice-Chairman; Mrs. J. Ryan Beiser, Corresponding Secretary; Mrs. Francis Thompson, Recording Secretary; Mrs. Rufus R. Whitis, Treasurer; Mrs. William D. Glenn, Parliamentarian; and Mrs. James Chambers, Historian.

The purpose of the club this year was to sponsor fellowship among the women of the faculty and staff. Each meeting of the club was planned with this in mind. From the proceeds of the linen, china and furniture sales, the club completed the renovation of the piano in the Ballroom.

## SPECIAL TRAINING PROGRAM

With academic standards becoming more exacting and student failures increasing, private colleges are making a stronger effort to help capable students avoid substandard work.

Approximately 50 students at the University of Tampa are currently being helped over study hurdles with an aggressive no-credit Special Training Program. These are students whose scholastic background is weak but whose apparent ability is high. The purpose of the program is to assist them in overcoming the deficiencies and difficulties which lead to unsatisfactory per-

formance in spite of their high potential.

Dr. W. D. Glenn, Chairman of the Psychology Department, was instrumental in establishing this program. Working with Registrar Dunn and Psychologist Ho, Glenn outlined the format for the course, helped to accumulate special equipment for the testing of hearing and sight deficiencies, and helped set up the testing program which is a vital adjunct of the program.

Evidence to date, after only one year of operation, indicates the program is accomplishing worthwhile results.

## INCREASED FACULTY SALARIES AND BENEFITS

An increase in faculty salary scale, becoming effective in September, will raise the scale approximately 40% over a period of two years and individual salaries approximately 10% this coming year. The amount of faculty and staff group insurance, furnished by the University, has been almost doubled. These benefits will be made possible by an increase in student tuition of \$125.00 per year, which will bring the tuition and fees to \$685.00, still far lower than that of most other colleges of our size.

Now in effect is the Faculty Children's Exchange Plan, which allows free tuition at a wide variety of colleges participating in the plan.

## BEAUTIFUL BALLROOM

The redecoration of the Ballroom by the "Chiselers" has now reached the stage where it more nearly resembles its original appearance than at any time since the Tampa Bay Hotel was occupied by the University. Last fall the Ballroom, originally called the Music Room, was repainted a soft blue; new blue damask Victorian-style draperies were installed; Victorian furniture was purchased; and the stage recarpeted. Recently a magnificent chandelier of Waterford glass has been added.

On May 1 the Chiselers held a punch party for friends of the University in the newly-decorated room. Their interest lies in the beautification of the old Tampa Bay Hotel building and the promotion of the University of Tampa as an educational and cultural center for students, faculty and community.

The annual report closing the year, given by the President, Mrs. Morris White, at the last meeting of The Chiselers, issued the following challenge:

1891 the Hotel was opened

1931 the College was born

1961 WHAT CAN WE DO that will make a big year for the University?

They, and we, extend an invitation to our friends to visit this restoration.

## DID YOU KNOW THAT . . .

40,362 pieces of mail were handled by the Admissions-Registrar office since September?

Approximately 8,535 persons attended meetings in the Ballroom during the first three months of 1961?

60 University-sponsored TV performances were presented during the year, and University personnel participated in 15 additional programs?

University of Tampa faculty and staff gave 267 addresses during the school year?

University of Tampa faculty members reported attending 48 professional meetings in 1960-61?

21 faculty members attended and/or addressed 16 out-of-state conferences?

1,364 tests were administered this year, including 678 College Entrance Exams, 177 National Teacher Exams, 454 Graduate Record Exams, 55 Navy College Exams, by Dr. Robert L. Mohr who serves as University representative for the Educational Testing Service?

News of individual honors and activities of students goes to the papers in their own home towns?

252 news items concerning the University were clipped from Florida papers during the month of April, in addition to the clippings from out of state?

95 schools in Florida were visited by Mrs. Elrita Crawford and 150 schools throughout the Middle Atlantic and Northeastern states by Mr. Eduard Van Gelder in the recruitment program?

## THE NEWEST ORGANIZATION

The newest organization on the campus is composed of a group of adults who are resuming their education. They have chosen to call themselves "Ten O'clock Scholars" and they invite other mature men and women to join them in the continuing program of education, in order to keep abreast of the younger generations, who face the difficult task of assuming leadership in this "Space Age", which we are now entering.



## CONGRATULATIONS TO . . .

MR. CHARLES HYDE, who was appointed to the Assumption Committee of the Community Development Program by the Greater Tampa Chamber of Commerce and has received a fellowship to the Economics in Action Conference at Case Institute of Technology this summer.

DR. ROBERT E. WEAN, who was appointed by Mayor Julian Lane for a period of three years as a member of Gordon Keller School of Nursing Advisory Council.

MR. JAMES BIGNELL, who was elected this year's Chairman of the Industrial Arts Teacher Educator Council for the State of Florida.

DR. J. DUANE LOCKE, who was awarded six Honorable Mentions and one Award for Best in a Photography Contest and was requested by the Photography Society of America to submit some of his work as representative of the best in nature photography today for an 18 month international traveling exhibition.

MRS. LETA ENGLISH HESS for the selection of one of her paintings to be hung in the Corcoran Gallery of Art in Washington, D.C.

MR. LYMAN WILTSE, who was elected President of the Florida Music Educators Association.

DR. CLYDE REED, who was selected as a Director of the National Association of Biology Teachers for a two year term in January, 1961.

RABBI ZIELONKA, who was appointed by Governor Collins for a four year term to the Hillsborough County Children's Commission in January, 1961.

MR. JOE TESTA-SECCA, who exhibited a painting in the South Coast Art Show in the Ringling Museum.

DR. CHARLES S. GILES, who was re-elected President of the Tampa Realist Artists, Inc.

MR. STEPHEN PARK, who was elected President of the Florida Composer's League.

MR. JOHN VON SZELISKI, who was appointed to the Radio Network Committee of the National Association of Educational Broadcasters.

MR. JAMES A. CHAMBERS, who received citations for his work with the Association of Childhood Education and DR. RALPH E. STOUT, for his work with the Student Florida Education Association, from the Hillsborough County Education Association.

PRESIDENT DAVID M. DELO, who received a scroll and citation for outstanding achievement from the Alumni Association.

MR. RUFUS WHITIS, to whom the students dedicated the 1961 Year Book.

DR. JESSE L. KEENE, whose article "Sectionalism in the Peace Convention of 1861" will be published in the July Issue of the Florida Historical Quarterly.

DR. EDWIN O. COOK, who has been selected as one of a group of 20 to participate in a summer conference on "Recent Advances in Astro-Geophysics" to be held at Georgetown University, Washington, July 6 to 28.

### Alumni:

MRS. OTTO R. SKOKAN, who was named Lakeland's "Woman of the Year" in November 1960.

ERNEST KEENE BARD, who won the coveted Walter Mann Award of \$250 for his outstanding work at Stetson Law School.

HOWARD GLENN WADDELL, who received the Gulf Life Scholarship Award of \$250 and the Student Bar Association Certificate.

TONY IPPOLITO, who was named Alumnus of the Year at the Fall 1960 Reunion.

GEORGE TRUMAN HUNTER, who was recently promoted to Systems Manager in the Federal Systems, Advanced Management Control, Division of IBM.

### Other:

HEALTH AND PHYSICAL EDUCATION DEPARTMENT, which has the largest student membership in the Florida Association of Health Physical Education and Recreation.

UNIVERSITY OF TAMPA CHORUS, which was featured on Nationwide Television, Christmas, 1960.

BENJAMIN C. GRAPHAM CHAPTER OF THE STUDENT FLORIDA EDUCATION ASSOCIATION, which for the fourth year received the statewide trophy for having the largest attendance at the annual FEA Convention as well as at leadership conferences during the year.

### RELIGION IN CAMPUS LIFE

The Administration, working through the Faculty Committee on Religion, with Mrs. Elrita Crawford as coordinator, has this year obtained leadership and fixed objectives for the religious life of the campus. The Sunday Afternoon Open House in October was planned on an interfaith approach. The February week of religious emphasis included a series of noon hour question and answer sessions, student forum, faculty seminar and the all-student convocation with representatives of the Catholic, the Jewish and the Protestant groups each speaking on "What My Religion Means to Me". A Workshop for student officers was held in May, to set up the fall program and complete organization of a Council.

The objective of the Administration is to keep religion in the forefront of campus life at The University of Tampa, since this is an essential part of the total program of developing the well-rounded college graduate, who is future-oriented to live successfully in the changing world of tomorrow.

BULK RATE  
POSTAGE PAID  
TAMPA, FLA.  
PERMIT NO. 27

JUNE 1961



**NEWS and  
VIEWS**

OF THE UNIVERSITY OF TAMPA