

FRESHMAN SPECIAL



Minaret

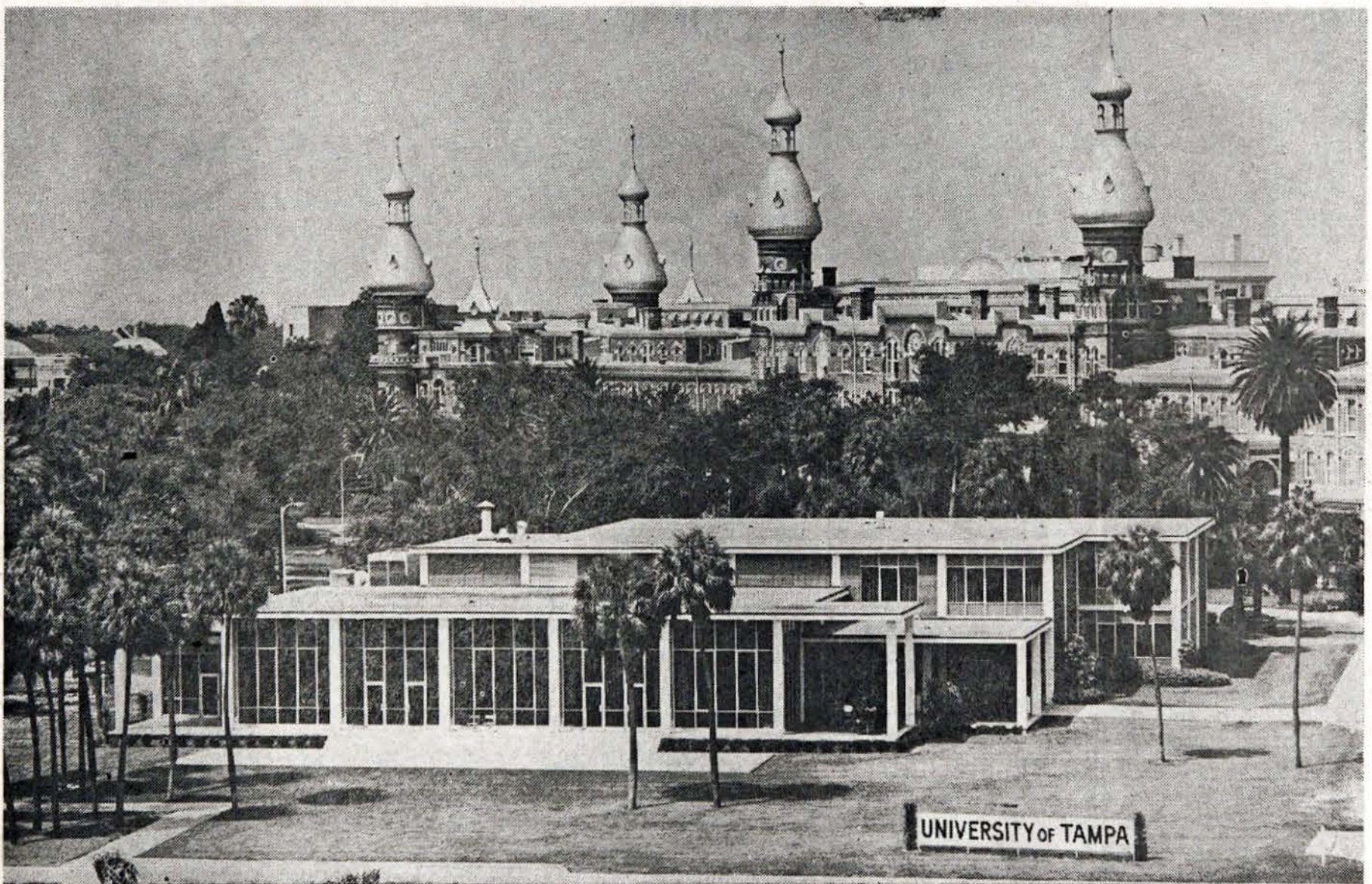


Volume XXXVI, No. 4 [1]

UNIVERSITY OF TAMPA, TAMPA, FLORIDA

Tuesday, September 14, 1965

Welcome to the University of Tampa



From The President

Mrs. DeLo and I extend a hearty welcome to all freshmen and new students. We hope you will find a friendly atmosphere at the University of Tampa, and everyone will be happy to assist you to become accustomed quickly to your new environment.

As college students you will be expected to assume responsibility for all your activities both within and outside the classroom. How you fulfill these responsibilities will determine both your share in creating a fine college and your continuation in it.

When you arrive you will become part of an institution which is in the midst of a progressive transition. I hope you will arrive fully ready for both work and play, and above all, eager to play your full role as a college citizen.

DAVID M. DELO,
President

Garbis Greets Students

It is my pleasure on behalf of the student body of Tampa University to welcome you: the class of 1969.

Tampa University is a growing institution which has progressed in leaps and bounds in the academic field. It is your privilege to contribute to the growth of this fine school.

To contribute means more, than to present a physical image on the campus. It means to be part of this community, your home, in both the academic and social areas. Each of you has talent which cultivated by the professors

and peers will help to make your life richer, but you in turn must do the same.

This is our school, let us work



together towards making it the finest institution in the country.

If Student Government can be of help in any way, please do not hesitate to call upon us.

Good luck, sincerely,
Gary Garbis

Inside This Minaret

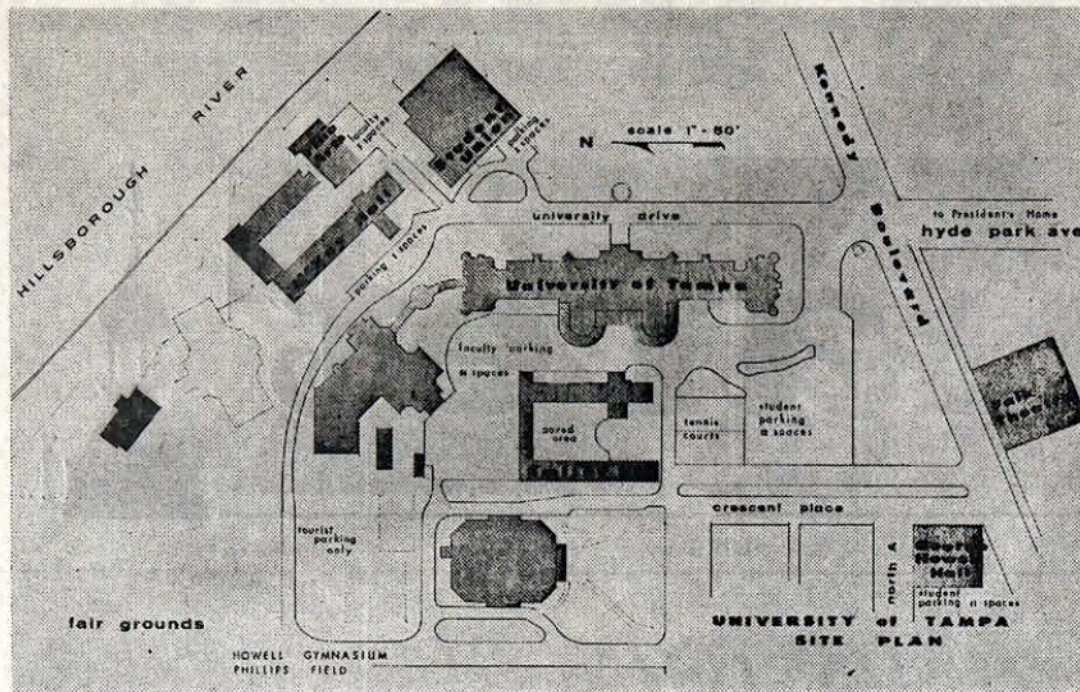
Meet your administration—Page 3.

The library is really a friendly place—See page 4.

Extra-curricular activities are an important part of college life.—Page 2.

Tampa U. has seven new professors—Meet them on Page 5.

Spartans face some tough opponents this season—Read about them on Page 6.



"Tampa U Is What You Make Of It"

EDITORIAL

The welcome mat is out for you, the class of 1969, and for you transfer students, whichever class you belong to.

As you have undoubtedly noticed by now this is the MINARET issue devoted especially to freshmen and transfer students. We hope that it help you begin your career at the University of Tampa.

The MINARET staff hopes that you will use this issue as a means of becoming acquainted with Tampa U. during those first few hectic days of college life and that in these pages you will find the answers to many of your questions, concerning life at Tampa U.

The beginning of a college education is the beginning of an adventure, both intellectual and social, and a chance to grow, to mature, to profit by this experience. The next four years are yours; they are what you make of them.

John Gardner Comments . . .

The independence or detachment of the creative individual is at the heart of his capacity to take risks and to expose himself to the probability of criticism from his fellows. Does this mean that he is a nonconformist? Yes, but not necessarily in the popular sense of the word. One of the interesting findings contained in recent research is that the creative individual as a rule chooses to conform in the routine, everyday matters of life, such as speech, dress and manners. One gets the impression that he simply is not prepared to waste his energy in nonconformity about trifles. He reserves his independence for what really concerns him—the area in which his creative activities occur. This distinguishes him sharply from the exhibitionists who reject convention in those matters that will gain them the most attention.

We have made much of the fact that the innovator frees himself from the old patterns and have neglected to emphasize that he does so in order to forge new patterns. This, if you reflect on it, suggests a picture of the creative individual fundamentally different from the romanticized version. The image created by the beatniks and by most of their predecessors back to the nineteenth-century bohemians has led us to suppose that people of high originality are somehow lawless. But the truly creative man is not an outlaw but a lawmaker. Every great creative performance since the initial one has been in some measure a bringing of order out of chaos. It brings about a new relatedness, connects things that did not previously seem connected, sketches a more embracing framework, moves toward larger and more inclusive understandings.

LETTERS TO THE EDITOR

Send all letters to:

Editor, MINARET

Box 49

University of Tampa

Tampa, Florida

Organization News

Participation in extra-curricular activities is an important part of one's college life. Here is an opportunity and challenge for one to meet new people and develop lasting friendships, as well as spend many relaxing hours.

Many organizations afford an opportunity to further one's major interest and one to develop new interests.

HONORARY ORGANIZATIONS

Alpha Psi Omega, Alpha Kappa chapter—National dramatic fraternity. It is the largest college organization in the world with more than 300 chapters. Membership is based on proved ability in dramatics and stagecraft.

Kappa Pi Alpha, Alpha Theta chapter—National art fraternity. Installed at the University of Tampa in 1948. Includes the finest artists, in the University. Second-year art majors in good standing are eligible for membership.

Kappa Kappa Psi—National affiliated honorary band fraternity. Membership is based on musical

ability, scholarship and participation in the University of Tampa band.

Pi Delta Epsilon—In 1954 the University journalism fraternity was first organized and installed as a chapter of Pi Delta Epsilon, national honorary collegiate journalism fraternity. Membership is open to men and women students who are qualified in the study and pursuit of journalism.

Sigma Alpha Iota, Beta Sigma chapter—National honorary music fraternity for women who have elected a major or minor in music. Membership is based on musical ability, scholarship and activity in music.

Sigma Tau Delta, Rho Zeta chapter—National professional English honorary fraternity. Its purposes are to encourage the student of English literature and to foster writing of high literary quality. The chapter at the University of Tampa publishes the literary journal, De Nova.

Psi Chi—National honorary society in psychology. Open to majors and minors with a B average in this field. Associate

membership is also available.

Delta Sigma Pi—International professional business fraternity. Its purposes are to encourage study of business practices and to develop a high sense of integrity.

Epsilon Pi Tau—International honorary industrial arts fraternity. Its purposes are to encourage and foster an interest in the many trade opportunity available to its students, other than the one that they have chosen.

Phi Alpha Theta—National history honorary fraternity. Open to majors and minors with 12 semester hours and a B average. Its purposes are to encourage and foster further pursuit of history and its applications.

Departmental and Special Circle K Club—Circle K is a service organization sponsored by the Kiwanis Club. Membership is open to men of the University of Tampa through election by Circle K members.

Florida Collegiate Academy of Sciences, University of Tampa chapter. Any student who is interested in the sciences—biological physical, medical, and social—may become a member. The Collegiate Academy is sponsored by the Florida Academy of Sciences which offers students an opportunity to work with the senior members.

Students Florida Educational Association—All students who select majors and minors in education are expected to join. The organization, which is affiliated

with the National Education Association, exists to help students who propose to make a career of teaching become better acquainted with their profession and to meet important visiting educators. It offers many opportunities for the development of leadership.

Health, Physical Education, and Recreation Association—Membership of this organization is drawn from students interested in physical education careers.

Spanish Club—Membership is open to students interested in the Spanish language and culture. Purpose of this organization is to promote the Spanish and Latin American culture for better understanding among the English-speaking and Spanish-speaking peoples, and to uphold the social and cultural standards derived from familiar and fluent use of Spanish.

Student Association for Childhood Education—The University of Tampa chapter of this national and international organization was founded in the fall of 1957 with a charter membership of 104 students. The objective of this organization is the continuing improvement of early childhood education in all fields—locally, nationally and internationally.

Pre Law Club—Open to any student interested in the law profession. Its purpose is the further study of law and its applications. Students must have completed 45 semester hours with a

C average.

Delo Forensic Society—Sponsored by the faculty in speech. Its purpose is to provide opportunity for practice in oratory, extemporaneous speaking, and poetry and play reading before campus and off-campus groups.

Le Cercle Francais—Every student enrolled in a French class is eligible for membership. Members of the faculty and others with interests in French are eligible for honorary membership.

Spartan Warrior Lettermen's Club—Men who are awarded a varsity letter in any intercollegiate sport automatically become candidates for membership.

The Ten O'clock Scholars—Open by invitation to adult students and alumni for the purpose of promoting lasting friendships and continuing ties with the University.

The University of Tampa Players—Sponsored by the Drama Department. Membership is drawn primarily from students interested in dramatics.

College fraternities and sororities play an important social role in the life of the college community.

The five national social fraternities on campus are: Pi Kappa Phi, Sigma Phi Epsilon, Tau Kappa Epsilon, Theta Chi and Epsilon Phi. The national social sororities on campus are: Alpha Chi Omega, Delta Phi Epsilon, Zeta Tau Alpha, and a colony, the Delta Colony.

MINARET

The MINARET is published weekly by the students of the University of Tampa, Tampa, Florida

Member: National Advertising Service, Inc., and Associated Collegiate Press

Editor-in-chief
Richard Perrier

Business Manager
Alyce Spohn

T. U. Administrators to Aid New Students

Dr. David Delo

Dr. David M. Delo, the fifth president of Tampa University, is a versatile and dynamic man.



His background includes being president, educator, author, and geologist.

Just before he came to the university, he served as President of Wagner College. Moreover, he was executive director of the American Geological Institute and executive secretary of the Division of Geology and Geography of the National Research Council in Washington, D. C.

He was instrumental in the establishment of the first formal reserve program for scientists and engineers. In addition, Dr. Delo is the recipient of a BA degree from Miami University, Ohio, an MA degree from the University of Kansas and a PhD from Harvard.

Another facet of Dr. Delo's personality is his interest and pursuit of aviation. He became a certified instructor in the civilian pilot training program.

As an author he has written many articles for technical and educational journals as well as co-author of "Years of This Land" (1943) and "Scientists in Uniform" (1948).

As an active civic leader, Dr. Delo has been associated with the Geographical Society of America, the Association of Geology Teachers, United Palsy Association and other numerous clubs and activities holding various offices.

Dr. Charles Walker . .

A very busy and versatile man is Dr. Charles R. Walker, Jr., the Vice President of Academic



Affairs. In this capacity Dr. Walker is concerned with the academic community which includes students, faculty, and the curriculum.

Prior to this position Dr. Walker has served the university in the capacity of biology department chairman, acting dean of administration, and the chairman of the university's first elected faculty committee.

As a native of West Virginia Dr. Walker is the recipient of six baccalaureate degrees. He holds a B.A., B.S., BSED, MA, MS, and a Ph.D.

Moreover, he served as personnel director of a national manufacturing company in Cincinnati, Ohio as well as having had prior college teaching experience.

Dean King . . .

Dean King is the Dean of Women. But more than that she's our friend and counselor. Women students go to her with any problems or questions, for the door to her office, her heart, and her home is always open to you.

Dean King says:

Greetings to all and returning students. We are happy to say hello to each of you new students, and welcome home to all you returning students.

We hope this will be the most profitable year of your life. A college education is the most valuable gift your parents can give you. Without a college degree, your earning power would be much less.

Dean DeCarlo . . .

Michael A. DeCarlo, Dean of Men, has been with the University of Tampa since July, 1962. During the period he has also served as Student Placement Director and as a logic instructor.

Dean DeCarlo earned his B.A. and M.A. in philosophy at the University of Miami and also completed a year of law studies. Prior to accepting his present position, he was Assistant to the Dean of University College, University of Miami and Director of Academic Counseling for all freshmen and sophomores. While attending as a full time student, he also supervised all male residence halls.

At age 20 Dean DeCarlo had completed two years of college

in the Naval Aviation V-5 Program and Navy flight training. Now a lieutenant commander in a Naval Air Reserve squadron, Dean DeCarlo served as a pilot, flight instructor, and administrator in the Regular Navy for seven years.

Mrs. DeCarlo attended the University of Miami and was graduate from Wesleyan College, Macon, Georgia. They have three children ages 8, 11, 13.

Robert Lovely . . .

ROBERT LOVELY: Coach Lovely is director of the Student Union. He welcomes all new students to Tampa U and reminds them that the Student Union is their living room on campus. Through various standing committees a variety of programs put on throughout the school year. The music listening room and game room are open to all students. Anyone interested in working on one of the committees is invited to come to Coach Lovely's office and sign up.



Coach Lovely first came to Tampa U in 1960 as coach and physical education instructor. In 1963 he began his present job as student union director. He received his BS degree in education from the University of Tampa and his MS from Boston University.

Dr. Robert Wean . .

"Although the scholarships and loans for the first semester have been allotted, students need not be shy about next semester and should make application early," said Dr. Robert Wean, director of student aid.

Financial aid at the University of Tampa is composed of scholarships, loans, and part-time jobs.

All students aid is awarded through application made to Dr. Wean or to Peter Cook, financial officer. Applications for scholarship must be filed no later than April 1 for the fall semester and December 1 for the spring semester. Loan applications may be received anytime.

Further information on types

of aid available may be found in the current catalog.

Donald Miller . . .

Donald Miller formerly a Tampa U field representative, is the new assistant director of Guidance. He is academic counselor to Evening Division students and head of the job placement center.



Mr. Miller invites evening division students to become acquainted with the counseling services of the university.

He will be available for conferences in his office, Room 279A, between 9:00 a.m. and 3:30 p.m., Monday through Friday; and, beginning on September 23, 1965, from 5:00 to 7:00 p.m. each Thursday.

It will be advisable to arrange a conference by appointment so that he will have your records available. Also priority will be given to those students having prearranged conferences. Appointments may be made by calling the Guidance and Placement Office, 253-8861, ext. 205.

Mr. Miller advises "Do not neglect your catalog! Strict compliance with its provisions will help you avoid serious problems which can come to light when your 60 and 90 hours evaluation is made."

Mr. Miller, reminds all students that the University of Tampa maintains a Placement Office to assist students to find employment. At present, the office has numerous part-time jobs available for both female and male students. Interested students should register at the Placement Office, Room 279A and check the job listings which are posted on the following bulletin boards:

Dr. Willis Dunn . . .

Dr. Willis Dunn is the new director of counseling and head of the Office of Guidance and Placement.

Dr. Dunn has been with Tampa U. since 1958.

He served as registrar and professor of sociology. He received his undergraduate degree from Ashbury College and his MA and PhD from Michigan State. He is also a Methodist minister and assistant pastor of the First Methodist church in Pinellas Park.

Dr. Dunn explained how the new center will operate.

"There will be five orientation meetings for all new students, freshmen and upperclassmen. At these meetings guidance profiles will be charted through testing."

(Continued on Page Four)

from Zale's
ACCUTRON®
the world's most
accurate timepiece!

Zale's is proud to present Accutron, developed by Bulova... the timepiece with the tuning fork instead of a balance wheel and mainspring. Here is accuracy that has the world talking...



**ACCUTRON
ASTRONAUT "A"**

Precise, electronic timepiece, stainless steel case, waterproof*, sweep second hand, rotating 24 hour bezel, 24 hour indicator, black luminous dial and hands, stainless back.

\$175

**ZALE'S WELCOMES TAMPA U. STUDENTS
SHOP IN THE HEART OF DOWNTOWN TAMPA
Open Mon. & Fri. Nite for Your Convenience
STUDENTS ACCOUNTS INVITED**

604 Franklin

Phone 229-2310

* when case and crystal are intact

no money
down

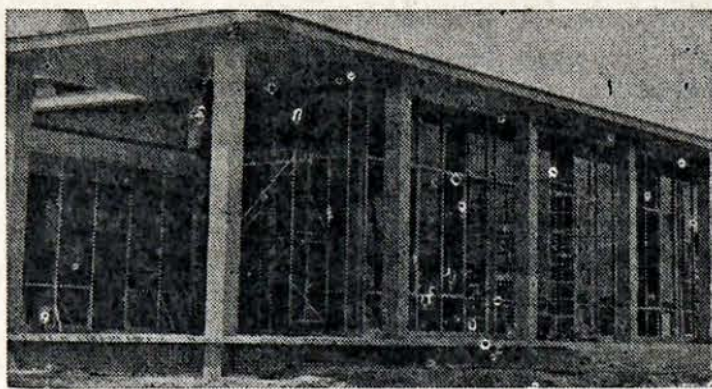
ZALE'S
JEWELERS

2308 convenient
terms

**FOLK AND
CLASSICAL
RECORDS
TAMPA
Art and Music
217 CASS STREET**

**Florida
Dairy**
Established 1921
Multi-Vitamin Milk, Homogenized Vitamin "D" Milk—Pasteurized Milk—Cream—Buttermilk—Chocolate Drink—Cottage Cheese—Ice Cream—Sherbets
**HOME OWNED &
OPERATED**
Home Delivery—Phone 248-3151
2209 Fortieth Street

**Manuel Beiro's
Valencia Garden
SPANISH RESTAURANT**
3 Blocks from T. U.
Lunches
Plate 95c — Regular \$1.20
From 11:30 - 3:00 P.M.
Dinners
\$1.75 and Up
11:30 A.M. to 12:45 A.M.
805-811 Kennedy Blvd.



New Student To Find Library Vital Experience

As college freshmen, the library will become an important, vital and hopefully interesting as well as pleasurable location.

To become acquainted with a library one must first check the basic materials available and their locations. Then it is possible to browse around to familiarize oneself with old friends and make new ones in the stacks, periodicals and reference sections.

The first old friend is the card catalog where the author, title and subject heading will be found. Then the reference section with its encyclopedias, dictionaries and basic research as well as scholarly tools should be visited. This gives the student a reading acquaintance with them which will save valuable time later.

Another old friend is the Reader's Guide to Periodical Literature. In this section a student will meet new friends like Dissertation Abstracts, International Essay and General Literature Index, Chemical Abstracts, Biological Abstracts, Psychological Abstracts, etc.

Moreover, the library contains various types of dictionaries and atlases. At Tampa University the stacks are open, that is, any book on the shelf may be checked

out by the student without prior placing orders except for reference and reserve. Although these books are usually available for circulation in the library proper, certain period of time is allotted each for use.

The library is located in the Main Building and contains approximately 74,000 selected volumes and 675 serial publications, newspapers, magazines, trade journals, professional periodicals and annuals.

In addition the library is very proud to be the recipient of several gift collections on various subjects: social science, education, languages, history, political science, and literature. It also has on file bound volumes of the Tampa Times and the Tampa Tribune.

The stacks are arranged according to the Dewey Decimal system. Furthermore, Tampa University library employs student assistants who are there to aid in the processing and answering questions.

The staff includes: Miss Charlotte Anne Thompson, Librarian, Mrs. Estella R. Crane, Circulation Librarian, Miss Gloria Runton, Catalog Librarian, Miss Vanda Nelson, Acquisitions Librarian.

T.U. TAKES ON NEW LOOK AS PHYSICAL PLANT EXPANDS

The University's physical facilities are being improved and expanded to keep pace with the school's intrinsic growth.

Although the main building of the University of Tampa is now three quarters of a century old and will celebrate the Diamond Jubilee of the opening of the Tampa Bay Hotel in January, 1966, much of its appearance will be brand new to students and faculty this fall.

James G. Chiricos, assistant director of the Physical plant, has announced the following renovations which were completed this summer.

On the outside of the building the wood trim has been painted from the northeast minaret to the southeast minaret. The color is a light cream in contrast to the red brick construction.

Indoors the entire first floor lobby and corridor have been redecorated. The dados have been finished in a vinyl fabric and the elevator entrance doors have been redecorated.

The telephone switchboard area has been modernized. Also, the stairs that led to the Minaret before completion of the Student Center have been converted to housing for additional telephone equipment.

Many first and second floor offices have been renovated with new paint, fabric wall covering, ornamental bookshelves, air conditioning and improved fluorescent lighting.

The second floor annex which takes in the hall area that extends from the center of the building north to the science laboratories has been painted a soft blue to match the south second-floor corridor.

Also on the second floor two new ethnic rooms have been installed along the Western Civilization Corridor. The "Rough Rider Room" was donated by the Tampa Exchange Club. The Senior Class of 1964-65 has financed construction of the Florence Room.

Outside the main building the east and west wings of Smiley Hall and McKay Hall dormitories have been redecorated. Also, more than half the rooms and baths at Howell Hall have been renovated.

Off campus at Phillips Field two visitors' dressing rooms have been repaired and re-roofed.

All renovating at the University of Tampa this summer with the exception of the two ethnic rooms was done by 10 full-time staff maintenance men and seven temporary summer workers.

Be watching in later issues of the MINARET for "Clues to Test Taking" that will be appearing as a service to all students from the Guidance Office.

T.U. Players Stage Tryouts Sept. 27 For 1st Production

Dominick J. Cermele, new director of the University of Tampa's Falk Memorial Theater, has announced that try-outs for the college's first dramatic production of the season, "Three Men on a Horse," will be held at the theater on Sept. 27-28 at 7:30 p.m.

Acting roles will be available for seven men and three women in "Three Men on a Horse," a classic farce by George Abbott and John Cecil Holm which had a successful Broadway run. The play will be staged at the Falk Theater Oct. 29-31 and Nov. 4-6.

COUPON

Bring This Ad In
Buy

Any Top 50 Hits

At 75c

(Regular \$1.00)

Any Top Album

At

Memorial TV

COUPON

Dr. Dunn . . .

(Continued from Page Three)

ing."

"The tests will be used to evaluate the students' abilities in four major areas: (1) verbal and non-verbal intelligence; (2) vocabulary and comprehensive reading; (3) mathematics reasoning and fundamentals; (4) English mechanics and spelling."

In addition to aptitude testing sessions will be used to urge incoming students to take a new course titled "Survey of College Life."

"Although it will not be an essential part of the core curriculum, the course will offer a one-hour credit. Also, we believe it will be invaluable in helping students find direction in college and in boosting school spirit," Dr. Dunn explained.

Dr. Dunn will be the instructor and will present methods of study, outlining, how to take tests, how to know the courses you need to take after you select your major, what to do when you decide to change your major.

Problems faced by college students in terms of values, value-judgments, and general social adjustment, will also receive due attention.

Perhaps the most important

SHIP A BOX OF FRUIT TO THE FOLKS BACK HOME

5% Discount to All Students and Faculty

ORDER NOW — WE WILL SHIP WHEN YOU DESIRE

Pay small amount at your convenience until shipping date

GREEN'S GIFTS

JELLIES — CANDIES — FLORIDA GIFTS

111 Hyde Park Ave.

Just off Lafayette St.

WELCOME STUDENTS

To PLANT PARK PHARMACY

(Across From Tampa U.)

- ◆ Visit our luncheonette
- ◆ School supplies
- ◆ Prescription Needs

FRIENDLY PERSONAL SERVICE

CHARGE ACCOUNTS INVITED — FILL IN AND MAIL

Student's Name _____

Parent's Name _____

Parent's Address _____

Parent's Signature _____

RESERVATIONS FOR

ANYTIME

ANY PLACE

ANYWHERE

University Of Tampa

Travel Agency

PLANE — TRAIN — BOAT — BUS

... At

Cashier's

Office



Publication Posts Now Available On Minaret

The University of Tampa has three outlets for creative students that like to write, enjoy photography or feel an urge to do something to aid their school and so turn to the area of publication.

The MINARET is published weekly during the year excluding vacations and the week of finals. Positions are available for the fall semester. The Minaret needs, writers, typists, and proofreaders. The business staff is not completely filled and is seeking people interested in advertising. Ad sellers receive a 15% commission on all advertising sold, so if you need some extra money come to the MINARET (experience is not required).

For people interested in future positions on the MINARET, or any other publications it is good experience to help out whenever possible. It also lets the students in on the inner workings of the University.

The editor in chief of the MINARET is Richard Perrier. The business manager is Alyce Spohn. So if you want to join our staff come to the MINARET office located in the basement, and talk with one of these students.

The MORROCAN is the yearbook that comes out the last week of every spring semester. Although it doesn't come out until May or June, work begins early in the fall. Trinidad Rio is MORROCAN editor and Tony Abella is business manager.

The third publication is DENOVO student magazine. In past years Sigma Tau Delta, the English honor fraternity, handled publication. All students are eligible to submit manuscripts.

Pi Delta Epsilon is the national journalism honor fraternity. Each year the best publication staffers are selected as pledges. This is another goal for those interested in working on either publication.

Seven New Profs On TU Staff

Dr. Floyd Allison

Dr. Allison will come to Tampa from Aberdeen, Md., where he has been branch chief at the U. S. Army Ballistic Research Laboratories since 1961. His work has entailed supervision of some 20 scientists, engineers and technicians in projects involving shock hydrodynamics and detonation of high explosives.

Dr. T. W. Jennings

Dr. Theodore W. Jennings, of Hattiesburg, Miss., will join the University of Tampa faculty this fall as an associate professor of Psychology. He will come to Tampa from the University of Southern Mississippi, where he is currently teaching developmental, general and personality psychology.

Other highlights of Dr. Jennings' career in the field of psychology are:

Clerkship in clinical psychology, Broward Mental Hygiene Clinic, Ft. Lauderdale; therapy practice, South Florida State Hospi-

tal, Hollywood, Fla.; testing cerebral palsy patients at Cerebral Palsy Center, Miami.

D. J. Cermele

Dominick J. Cermele, Toledo, Ohio, drama director and instructor, will join the University of Tampa faculty as associate professor of drama and director of the Falk Theater.

Cermele will come to the University from the Toledo Repertoire Theater, where he is a resident director and teacher.

He was graduated from the New York College of Music and received the Bachelor of Arts degree from Antioch College, Yellow Springs, Ohio.

He spent a year at the Yale School of Drama before receiving the Master of Fine Arts degree from the Boston University School of Fine Arts.

Cermele has held the position of supervisor of drama at Central State College, Wilberforce, Ohio, and has been an instructor of speech at Urbana Junior College, Urbana, Ohio.

Joe Testa-Secca

Joe Testa-Secca, well-known Tampa artist and artist-in-residence at the University of Tampa, has been appointed as a full-time professor of art at the University, effective Sept. 1.

A native Tampan and a graduate of the University of Tampa with a BA degree, Testa-Secca holds a Master of Fine Arts degree from the University of Georgia. He formerly served on the University of Tampa's part-time faculty.

Tampa Art Institute will open its 1965-66 season Sept. 11 with an exhibition covering 12 years of Testa-Secca's work. Represented will be borrowed work from collections, architectural commissions and new paintings.

Jan Bach

Jan Bach, a doctoral student in music at the University of Illinois and until recently a member of the U.S. Army Band, Washington, D. C., has been appointed as instructor of music at the University of Tampa.

Bach holds bachelor and master of music degrees from the University of Illinois, where he is studying toward a Doctor of Musical Arts degree in composition.

Dr. Mildred Mitchell

Dr. Mildred B. Mitchell, research psychologist with the Air Force Avionics Laboratory at Wright-Patterson Air Force Base, Dayton, Ohio, who assisted in selecting the first seven astronauts, will join the University of Tampa faculty as associate professor of psychology.

Presently employed in the Bionics Branch of the Electronic Technology Division of the laboratory, Dr. Mitchell was the first person assigned to that branch in 1960. She is in charge of monitoring bionics research contracts at universities and industries throughout the nation and lectures to numerous groups.

Jack Bertsch

Jack H. Bertsch, Columbus, Ohio, attorney and candidate for the Phd degree in philosophy, will join the University of Tampa faculty as an assistant professor of philosophy.

Bertsch is currently completing his PhD degree work at Ohio State University in Columbus.

During his legal career he has prepared briefs on merits and participated in arguments of two cases before the U.S. Supreme Court. He has worked on 28 cases which appeared before the Supreme Court of Ohio.

IF INTERESTED IN WORKING ON THE MINARET, or THE MOROCCAN, PLEASE FILL OUT

NAME

TAMPA ADDRESS

EXPERIENCED (Not Necessary)

Major at U of T

WELCOME TO TAMPA U.!

See Us For
SCHOOL JEWELRY
Heart Jewelers
434 W. KENNEDY
(Across from Campus)

RENT-A-CAR



\$5 per 24-hour day, 5c per mile

WEEKEND SPECIAL!

—Tampa University Students 18 Years of Age or Over—

FRIDAY NOON TO MONDAY MORN:

\$12.50 Plus 5c Per Mile

2303 N. Dale Mabry

Call 877-6051

WELCOME SPARTANS

TO

HYDE PARK VARIETY

- ◆ Meet your friends at our snack bar
- ◆ Discount on school supplies
- ◆ Complete laundry service
- ◆ Post office

HYDE PARK VARIETY

(ACROSS FROM TAMPA U)

Welcome To Tampa U!

For Art 102

(and all art classes)



WOLFE'S

Artists Supplies

(2 Blocks From Campus)

722 W. Kennedy

Buy your
Supplies

TAMPA SPARTANS



TAMPA ROSTER

Ends

Name	Hgt.	Wgt.	Class	Hometown
Dan Cogan	5-11	208	Sr.	King of Prussia, Pa.
George Wright	6-0	212	So.	Tampa
Gary Rapp	6-2	206	So.	Sebring
Mank Dixon	6-1	190	Jr.	Bartlesville, Okla.
Bucky Blallas	6-2	195	So.	Orlando
Jim Lake	6-3	200	Fr.	Plymouth, Mich.
Richard Nittinger	6-3	210	Fr.	Sayre, Pa.
Norm Soash	6-4	215	Fr.	Plymouth, Mich.

Tackles

Armando Flores	6-1	245	Jr.	Tampa
Mike Farley	6-1	235	So.	Stuart
Charles Fours	6-0	235	Sr.	Jacksonville
Charles McBride	6-2	250	Sr.	Tampa
John Yates	6-1	235	Sr.	Bradenton
James Cook	6-3	230	Fr.	Winfield, W.Va.
Vasa Stolbrand	6-1	210	Fr.	Jacksonville
Wayne Hayes	6-4	200	Fr.	Jacksonville

Guards

Gary Hallauer	6-2	210	So.	Orlando
Gerg Bonfe	6-1	230	So.	Syracuse, N.Y.
Doug Erwin	6-2	215	So.	Hurricane, W.Va.
Mickey Goff	6-0	206	Jr.	Fort Meyers
Ron Boylan	6-0	215	Jr.	Dallas, Tex.
Joe Flarity	6-0	195	Fr.	Miami
Russell Edge	6-0	195	Fr.	Cedartown, Ga.

Centers

Bob Olmstead	6-1	210	Sr.	Tampa
Dan Sikes	5-11	195	Sr.	Jacksonville
Fred Keely	5-11	215	Jr.	Plant City
Mike Raddick	6-0	200	So.	Pittsburgh, Pa.
Ronald Brown	6-1	210	Fr.	Sayre, Pa.
Gene Sherman	6-0	220	Fr.	Pataskala, Ohio

Quarterbacks

Val Johnson	5-10	175	Sr.	Lakeland
Ed Nizwantowski	5-11	173	So.	Peabody, Mass.
Vernon Korhn	5-11	182	So.	Tampa
Bobby Fernandez	5-11	165	Fr.	Tampa

Flanker Backs

John Perry	5-10	180	Sr.	Miami
Howard Langdon	6-0	195	Jr.	Havelock, N.C.
Pat Gispert	5-11	180	So.	Hialeah

Halfbacks

Wayne Blount	6-1	197	Jr.	Columbia, Ala.
Fred Branch	6-2	200	So.	Tampa
Mike Buss	5-11	182	Sr.	Miami
Jim Underhill	5-11	220	Jr.	Miami
Bill McManigal	6-0	210	Sr.	Hollywood
Ted Mims	6-0	165	Fr.	Lexington, Ky.
Rodney Walker	5-9	165	So.	Lexington, Ky.
David Morgan	5-11	185	Fr.	Sebring
Willmont Williams	5-11	190	Fr.	Cedartown, Ga.
George Barnes	5-11	170	Fr.	Atlanta, Ga.
				Daytona Beach

Defensive Specialists

Mike Davis	5-11	170	Jr.	Jacksonville
Frank Vining	6-0	178	Sr.	Lake City
Verlin Williams	5-11	180	So.	Orlando
Gary Linton	5-9	185	So.	Gardiner, Me.

Kicking Specialist

Kevin Hurt	6-4	220	Sr.	Butler, N.J.
------------	-----	-----	-----	--------------

Spartans Prepare for Opener

The University of Tampa football team opened practice a week ago and is now preparing for its opening game September 18th against McNeese State College in Lake Charles, Louisiana. The SPARTANS open the season with three road games before returning to Tampa for six home games. The home opener will be October 9th against North Texas State.

This year's team has shown promise of becoming one of the best in years at Tampa. Head Coach Sam Bailey and his staff are expected to again display the wide-open style of football that fans and students enjoy. Quarterback Val Johnson and flankerback John Perry are expected to head the passing attack while fullback Jim Underhill and halfback Wayne Blount will handle most of the ground work.

University of Tampa students are admitted to the games by merely showing their Student ID Card at the gate.

This will allow for more seating room for students. Every student is encouraged to attend each game and back the SPARTANS this year.

Oak Park Cleaners
SALUTES THE
TAMPA U.
SPARTANS

Spartan Warriors

DAN COGAN—Has good speed and strength. He has developed into an excellent tight end. Offensively he is a good receiver and blocker.

GEORGE WRIGHT—Has made the switch from fullback to end this spring. He does everything right. He has the potential to develop into a fine end. He will also be used a great deal as a defensive end.

GARY RAPP—Came to Tampa last year as a halfback and was moved to end. He has done an outstanding job and had an excellent spring. He possesses good speed, moves and hands. His excellent running ability peg him as the one most likely to be hauling in Tampa's long tosses.

KEVIN HURT—A kicking specialist. He handles extra points, kickoffs and punting. He averaged 39 yards per kick in 1963 and last year had an average of 38.1.

ARMANDO FLORES—One of the best linemen Tampa has had in a long time. He is strong and fast and likes to hit hard. Manny's 245 pounds will play both ways often this fall.

CHARLES FOURES—Outstanding lineman last year. He has good speed and is known as one of Tampa's hardest hitting tackles.

CHARLES MCBRIDE—Comes back to the team after a year's absence with an injury. He worked hard during the spring and could be a starting defensive tackle. He is quick and has good speed.

BOB OLMSTEAD—Didn't have a good spring but was a starter in 1964

on offense. He should be the starter this year. He can be as good as he wants to be.

DAN SIKES—A team leader. He has good speed, hits hard and is quick to learn. Will be a starter at linebacker. Providing an old neck injury doesn't act up, he could well be offensive starting center.

GARY HALLAUER—Was a starter as a freshman last year. He missed part of the spring with an injury. He is quick and aggressive and eager to learn. He will again be a starter on offensive guard.

GREG BONFE—Has good speed and will see a lot of action at linebacker. He had an excellent spring and should have a great year in 1965 at guard.

MICKEY GOFF—Returns to the squad after a year's layoff with an injury. Has the most potential of any player on the team. He will probably be a defensive starter at noseman.

VAL JOHNSON—Has developed into a fine dropback passer. Last year he established many new records in passing at Tampa. He improved his over all game this spring by improving his running. He is expected to have an outstanding season.

ED NIZWANTOWSKI—A fine runner who is extremely hard to contain. He improved his passing this spring and should give Johnson a battle for the role of starting quarterback.

WAYNE BLOUNT—Broke into the

(Continued on Page 4, Col. 5)



TWIN-PACK
BY

DANTE

FIRST IN MEN'S FASHION IN 66 COUNTRIES ON 6 CONTINENTS.

FOR MEN WHO KNOW HOW TO HANDLE WOMEN

Nothing weak about new Dante Cologne and After-Shave! It's a lasting scent with subtle power. Start the day with Dante, a never-ending pleasure the world over. Dante (Cologne and After-Shave) Twin Pack \$5. Cologne \$2.95. After-Shave \$2.50.

FALK'S
of Tampa

PROTEIN—

Tablets or Powder

By Hoffman or Weider

(CRASH CAIN WEIGHT)

(Pro-101)

Natural Vitamins,

Fresh Juices,

Health Products,

Books, Magazines

KEEPWELL

714 W. Kennedy

(2 Blocks)

UNIVERSITY OF TAMPA'S 1965 FOOTBALL SCHEDULE

Sept. 18	McNeese at Lake Charles, La.	8:00 P.M.
Sept. 25	Buffalo at Buffalo, N. Y.	1:30 P.M.
Oct. 2	Mississippi State at State College, Miss.	2:00 P.M.
Oct. 9	North Texas State at Tampa	8:15 P.M.
Oct. 16	Southwest Louisiana at Tampa	8:15 P.M.
Oct. 23	Delta State at Tampa	8:15 P.M.
Oct. 30	Jacksonville (Ala.) at Tampa	8:15 P.M.
Nov. 13	Maine at Tampa	8:15 P.M.
Nov. 20	North. Mich. at Tampa (HC)	2:30 P.M.

PARENTS:

Would you like to keep up with campus activities? If so, complete this blank for a subscription to the MINARET.

Name

Home Address

City State

Enclose a check or money order for \$3.00 for a years subscription to the MINARET. MINARET, Box 49, University of Tampa, Tampa, Florida.