

NEWS.

Campus police catch thief. See story, page 5.



FEATURES.

Houseguests from hell. *Mad-house* opens today. See story, page 7.



SPORTS.

Spartans win against St. Leo's. See story, page 9.



The Minaret



Vol. 59, No. 17

UNIVERSITY OF TAMPA • TAMPA, FLORIDA

February 16, 1990

Faculty salary resolution nears vote

By LLOYD CHATFIELD
Editor

Raising University of Tampa faculty salaries to regional and national averages is the goal of a resolution the UT faculty will vote on next week.

The Faculty Salary Enhancement Resolution, released to faculty members last Tuesday, was drafted by members of the UT chapter of the American Association of University Professors (AAUP). The resolution proposes the creation of a task force of administrators and faculty to increase faculty compensation to national averages "by 1995 or as soon thereafter as financially feasible," as stated in Master Plan III.

Constance Rynder, professor of history and president of the UT AAUP chapter, said the resolution was designed to allow the faculty and administration to work together to address faculty salary disputes.

"We think that this is a very conservative effort to address a problem that everyone knows exists and to do so in a cooperative manner with the administration," Rynder said.

According to an information sheet attached to the resolution, professors, associate professors, and assistant professors would have to receive annual salary increases of 9 percent, 8.5 percent and 7.5 percent, respectively, in order to meet national averages by 1994-1995.

The resolution also includes provisions for annual cost-of-living salary increases as well as merit-based increases.

"What we would like to see is an even split between cost-of-living increases and the merit system," Rynder said. "We feel that an all merit-based system can be abused."



Rynder

In the past, some faculty members have been given raises as low as 2 percent, which fail to compensate for cost of living increases.

Faculty salaries at UT currently range from 14 percent below national average for full professors to seven percent for assistant professors. Rynder pointed out, however, that these figures were based on AAUP statistics, which do not differentiate between salary levels of professors from different disciplines.

However, the administration uses figures from the College and University Personnel Association (CUPA), which does break down salary averages depending on a professor's discipline. The resolution suggests "that the best approach to achieving the stated goal is through a cooperative effort [using both sets of figures]."

Richard Piper, associate professor of political science and chair of the Faculty Committee, said the task force was a good idea but

"What we would like to see is an even split between cost-of-living increases and the merit system."

Constance Rynder
President, UT AAUP

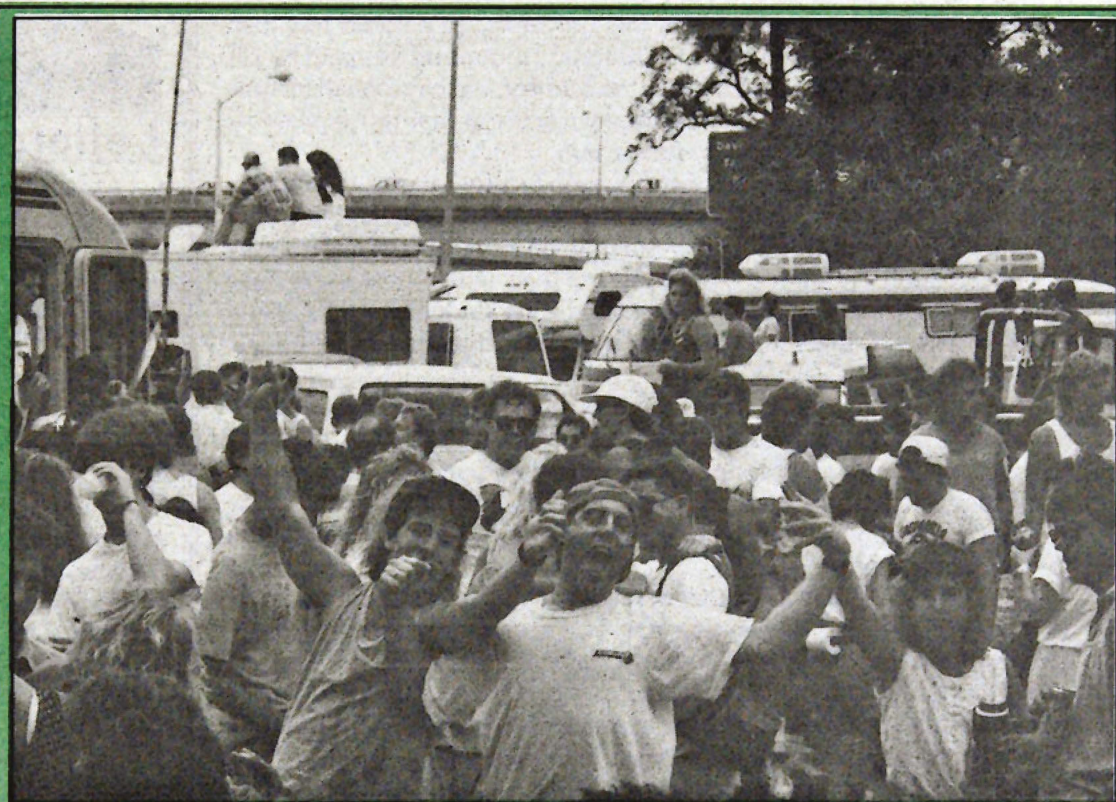
added that the CUPA figures would probably provide a better guideline for determining where salaries should be.

"It might be better to use more specific data," Piper said. "The [administration] uses CUPA figures, which break salaries down by discipline . . . I would support going that route."

UT Provost Thomas Hegarty said the administration would welcome the faculty's input but added that the administration was already studying the issue.

"I like the idea [of a task force], and I think it should be thoroughly and carefully explored," Hegarty said. "I also think the administration would appreciate the opportunity to fully explain what is being done currently, since I'm not sure

See **SALARY**, page 5.



Evan Crooke — The Minaret

University of Tampa students Seth Nieman and Derren Bookbinder were two of many who turned out to enjoy the parade and make merry during the annual Gasparilla festivities last Saturday.

Smith chosen as 1990 commencement speaker

By KYM KERAUVORI
News Editor

Roger Smith, chairman of the board of General Motors and one of the six candidates on the final list of nominees from the University of Tampa faculty, students, and trustees, has been selected as the speaker at commencement on Saturday, May 5. He will also be awarded an honorary degree of Doctor of Humane Letters as part of the ceremony.

Smith became the tenth chairman and chief executive officer of GM in January 1981, while also retaining his prior chairmanship of the GM finance committee and his memberships on the executive and administration committees. He serves on the corporation's ten policy-making groups.

John J. Connor, a spokesman for the board committee that studied the qualifications of top contenders for the position, described Smith as "aggressive, impatient, very bright, very thorough — and someone who would step on toes from time to time. I thought he would be someone who was willing to make changes, even in a bureaucracy as entrenched as GM's."

One of Smith's changes has since become controversial with the recent release of a documentary, *Roger & Me*. Under Smith, GM closed down its plants in Flint, Michigan, laying off 30,000 workers. The tongue-in-

cheek documentary details filmmaker Michael Moore's attempts to confront Smith through a haze of capitalistic coldbloodedness and invite him to visit Flint to see what effect the change had wrought.

Smith also established New United Motor Manufacturing, GM's tie-up agreement with Toyota Motor Corporation, Japan's largest carmaker, in 1983. The agreement provided for production of sub-compact cars using Japanese work rules and management in GM's formerly closed-down plant in Fremont, Ca. And, in 1984, Smith purchased the Dallas-based Electronic Data Systems, the world's largest data-processing firm, in the first step toward making GM a paperless corporation.

Smith was described by John S. DeMott in the Jun. 17, 1985 *Time* as cultivating a "deceptive aw-shucks manner and punctuat[ing] conversation with his favorite expression: 'Holy Toledo!' There is a touch of mischief mixed in with his boardroom appearance. His darting mannerisms are not those of nervousness, but of boyish restlessness, masking a powerful intellect."

In addition, Smith originated GM's Care-and-Share program for needy families and led the way in the establishment of the GM Cancer Research Awards in 1978. He is now chairman of the United Foundation in Detroit.

The recipient of honorary degrees from several universities, including a Doctor of Laws from De Pauw in 1979, Smith is on the advisory council of the Graduate School of Business of Stanford and is a trustee of the California Institute of Technology, the Cranbrook Educational Community, and the Michigan Colleges Foundation, Inc. He is a director of Johnson & Johnson, the Detroit Economic Growth Corporation, Detroit Renaissance, and New Detroit, Inc., as well as chairman of the board of the Motor Vehicle Manufacturers Association.

He was named 1984 Man of the Year by *Automotive Industries* magazine and top chairman of 1984 by *Automotive News*. In 1985 *Financial World* honored Smith as its overall Gold Award winner, the best CEO in fifty-three major industries, for having taken "the necessary strategic steps to redirect the company forward and move the industry along with it."

Smith married the former Barbara Ann Rasch, a GM secretary, on Jun. 7, 1954. They have four children.

During the UT commencement ceremony, State Senator Malcolm Beard, a 1940-1941 attendee of UT and a benefactor, will receive an honorary Doctor of Public Service degree.

The Board of Trustees will also designate a local community leader for the UT Medal for the first time in several years.

Editorial

Attention to faculty pay long overdue

It's not a new topic by any means — the need to increase professor salaries at the University of Tampa — yet it is one which has never been adequately addressed, much less rectified. This week's Faculty Salary Enhancement Resolution is, hopefully, the first step toward resolving this dilemma.

The professors are the backbone of any university. Their knowledge is the ultimate product of an institution of higher learning, and their ability to pass that knowledge on to us, the students, is what makes us come here.

Why, then, should professors at this university be paid far less than their counterparts at comparable institutions? Tuition and fees paid by UT students certainly aren't the lowest in the country. We pay a small fortune for our education, and we do so because we expect a first-rate education. We can't get one without quality instruction.

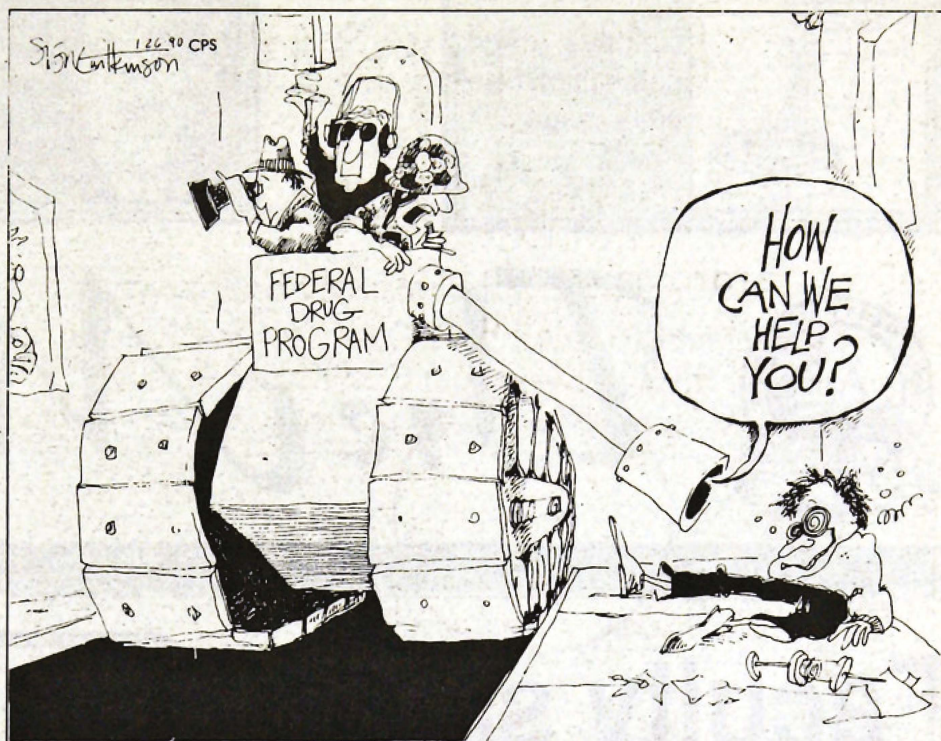
So what justifies the incongruity between faculty salaries here and at other institutions? Is teaching at UT somehow less challenging than elsewhere? We certainly doubt it. Besides having to deal with a seemingly endless stream of administrative nonsense over which professors have little or no control, they must attempt to educate students who, in many cases, are less prepared for the rigors of collegiate education than students at other schools.

Average SAT and ACT scores of UT students reflect a student body whose basic skills average among the lowest of any major private or public university in Florida. This is not to say that UT students are less qualified or intelligent than students at other schools, but it does indicate that many need extra attention during their first years here, and this burden falls on the shoulders of professors.

Professors must also make themselves available for advising students, an important and time-consuming task. This service is expected of nearly every professor and only adds to the difficulty of their task.

The current system of salary increases is based solely upon ostensible "merit." Professors deemed worthy of greater compensation by administrators, trustees, and division chairs get rewarded. However, since their merit is evaluated by administrators, with whom many of our best faculty often disagree, professors who fail to maintain the party line are susceptible to an administrator's pique. They could receive a miniscule raise, say two percent, and wind up poorer in the next year. The proposed mixture of merit- and cost-of-living-based salary increases will help alleviate this potential for politics to creep in where it doesn't belong, and not discourage innovation on the part of professors. The best professors are often those who follow a different drummer. Coercing these professors to conform is a disservice to us all.

Students entering UT soon recognize the exceptional quality of the faculty here. The faculty has always been the most consistently praised aspect of the university. Most professors are highly knowledgeable in their fields and genuinely interested in sharing their knowledge with students. It is unfortunate that their labors have been thus far shamefully under-compensated, but in light of the pending Faculty Salary Enhancement Resolution, we hope for a future in which UT's faculty get the respect — and compensation — they deserve.



Letters to the Editor

UT Division of Nursing aids in helping homeless

Dear Editor:

I read with interest your articles on the homeless in the Feb. 2nd edition of *The Minaret*. The Division of Nursing here at UT is doing its share to ease some of the problems these families experience, and I thought that the university community might be interested in reading about our activities.

Dr. Trekas and I provide our services to the Family Care Center on an on-going basis in our roles as Advanced Registered Nurse Practitioners. We perform physical examinations on the children in order for them to enter day care at the center or to enroll in school. We have also seen numerous sick children during our visits.

Students enrolled in NUR 318 (Client Assessment) have a brief clinical rotation at the Family Care Center to receive experience in pediatric assessment. This rotation also benefits the center, as these assessments clear the way for the children to enter

school or day care.

Students enrolled in NUR 346 (Family Nursing) also have a rotation through the Family Care Center. This rotation is much more intense and lasts for the greater part of the semester. Each student is assigned to a family at the center and works with the family helping with health problems, psychosocial issues, family communication skills, employment problems and wellness education. This individualized attention and assistance from our students enhances the family's chances to become a success story. The students are also invaluable to the families as a community resource.

Thank you for allowing me to share the Division of Nursing's activities at the Family Care Center with the university community.

Sincerely,
Julie Barroso
Instructor, Division of Nursing

Visitor praises *Minaret*

Dear Editor:

I was in Tampa over the weekend. I had some business meetings to attend on Monday and Tuesday and flew in from California a couple of days early to have a look around the area. I very much enjoyed the Bay area lifestyle and the people I met.

We were over by the Tampa Bay Performing Arts Center and noticed the pointed domes on your campus. We went to investigate and found the beautiful old building, Plant Hall. We went all through it and marveled at its beauty. I'm so glad it's being restored; there is so much to be seen and felt and learned in a wonderful building like that. I liked the rest of your campus too.

So — I enjoyed Tampa, the UT campus, that wonderful building, the people, etc. But that's not what I wanted to write you about.

I just wanted to tell you that I think *The Minaret* is the best college newspaper I have ever seen. I picked up the Feb. 2nd issue, and I am very impressed with its content, its look, its writing, its thoroughness, its creativity and most of all its positiveness. I just wanted to offer congratulations to what I am sure is a terrific staff. Keep up the great work!

Sincerely,
Chris Terrence
Fresno, CA



The Minaret



University of Tampa • 401 W. Kennedy Blvd • Box 2757 • Tampa, FL 33606 • Tel (813) 253-3333 ext. 335

UT's award-winning student newspaper

Lloyd Chatfield
editor

Maria Miller
assistant editor

Kym Keravuori
news editor

Susan Walter
opinion editor

Maya Lotz
features editor

Cary Bogue
sports editor

Jon Courtney
assistant news editor

Art Wayne
assistant features editor

Glen Finnerty
assistant sports editor

Evan Crooke
photography editor

Rebecca Cochran
assistant photography editor

C. Bruce Ford
business manager

Staff — Henry Allen, Samantha Baggett, Rick Brochetti, Gavin Chin Lee, Jemal Dangerfield, Richard Erbe, Mark Gadbois, Michelle Galicia, Mary Ellen Giunta, Laura Gonzalez, Mark Jerome, Sabrina O'Brien, Jenny Oestreich, Chuck Rodriguez, Chad Roffers, Marty Solomon.

Andy Solomon
faculty adviser

Rick Short
interim faculty adviser

Letters Policy

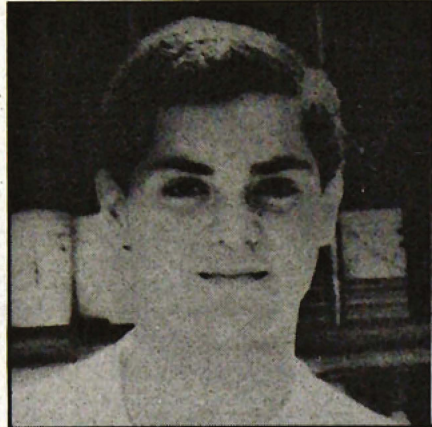
The Minaret welcomes any and all letters to the editor. Letters should address issues relevant to the University of Tampa community and be typed and double-spaced. *The Minaret* reserves the right to edit letters for brevity and style and to refuse publication of letters containing potentially libelous material. Although names may be withheld under certain circumstances, all letters must be signed and include the writer's P.O. box and/or telephone number. Letters may be sent to UT Box 2757 or delivered to University Union room 4.

Campus Voice

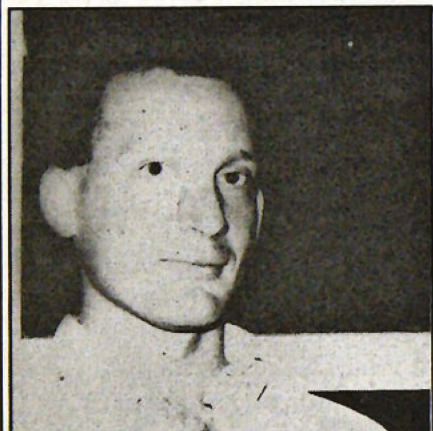
UT professor salaries are below national averages. What effect would raising their compensation have on the quality of education offered here?



Graciana Fuentes, Fr.
"There's no corrolation between scholars and under-achievers, so why should the latter be paid more?"



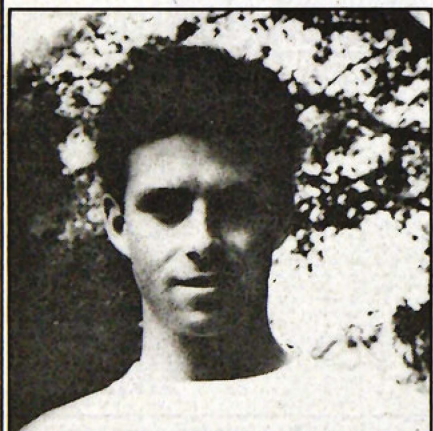
Pedro Hernandez, Fr.
"If they got paid more, they would be more encouraged to get the job done."



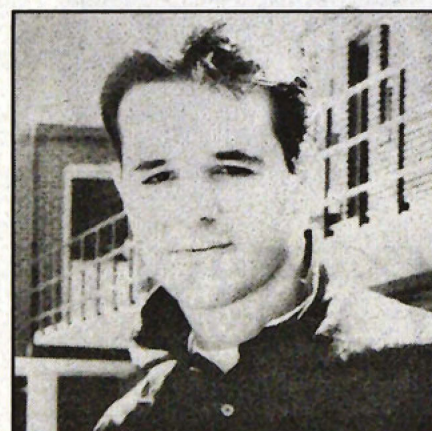
Brian Scott, Sr.
"This is a private school, so we should be able to pay our professors top money."



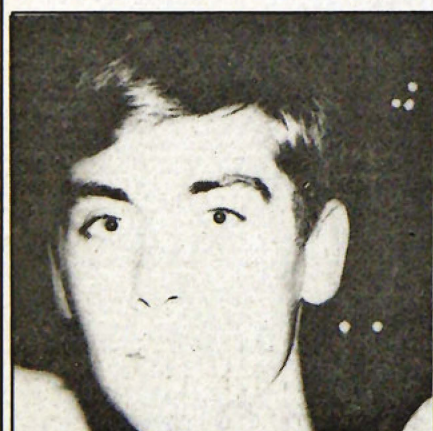
Shawn Galloway, Fr.
"The quality of education might not improve, but it's only fair that they are paid the national average."



Tad Harmes, Jr.
"Teachers ought to be paid the appropriate pay raise. They offer the one-on-one attention we need."



Chris Paradiso, Fr.
"If they get paid more their desire for us to excel would be much greater."

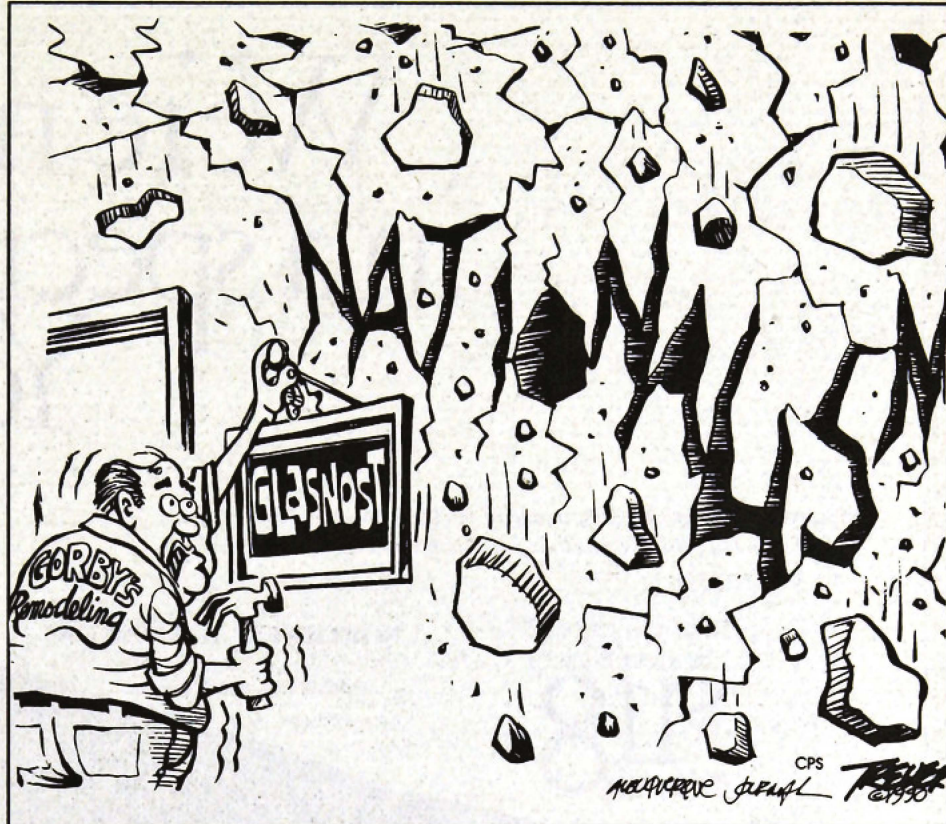


Tim Trzcinski, Sr.
"Raising salaries could possibly attract non-UT professors to teach here."



Joseph Holbrooks, Jr.
"A higher salary for good professors would be great, but a bad professor would still be bad."

Photos and Interviews by Rebecca Cochran — The Minaret.



Help us fill this space!

Got a complaint, or just a general opinion? Write a letter to the editor! Please send letters to UT Box 2757, and let your voice be heard.

Guest Column

Writer questions value of wasting student funds

By Kevin S. Kladakis

It's Homecoming time again ... a time when the UT basketball team tramples its opponent at the Martinez Sports Center and students and faculty dress up in their best duds for the all-important Homecoming Dance.

Ideally, the homecoming dance would be held in Fletcher Lounge. But then again, ideally there would also be a basketball game at the Martinez Sports Center (the Spartans play Barry College in Miami on Saturday).

Fletcher Lounge could be one of the most decorous ballrooms many students will ever see, with windows that climb the walls for what seems like a mile to a circular domed ceiling and another circle of windows at the top surrounded by lights. The only time I have seen Fletcher Lounge was while standing in line for three hours to register for classes. What a shame it can't be used for something a little more appropriate to its atmosphere.

Our elected tried and true, Student Government, has chosen to spend our money (the hefty student activities fee we cough up every year) in a different arena, so to speak. The Sheraton Grand. Elegant, impressive, expensive. Do you think that SG paid out the nose to rent a fancy-schmancy room to put on airs for a night? How about the booze and food? Ought to be quite a spread.

Of course, I cannot go without mentioning another expensive extravagance that SG has taken it upon themselves to procure. They have decided to rent limousines for transportation to what promises to be the most frivolous and ostentatious affair UT will see this year. Where there is other people's money to spend, yours in this case, only the best will do.

Consider the advantages of having the homecoming dance on campus. We could use the beauty of Fletcher Lounge for the purpose it was built for, not to mention the amount of money the university just spent renovating it. Our own police force could double as security. A Victorian stroll (like the one held every Christmas season outside Plant Museum) would certainly be more romantic than a stuffy limo ride with four strangers trying to make small talk. If the students were able to walk to the dance, we could almost eliminate the prospect of drinking and driving. Also, the close proximity would attract a greater number of students.

Think of the money that could be saved by using what's available to us, money that could be used for real entertainment such as a live band, and money that could be passed on to the students in the form of lower ticket prices. Maybe then SG would see a bigger turnout to their annual gala.

Although it's too late to do anything about this problem for this year's dance, next year UT students must be sure that they put their two cents in and let their elected student officials know how they feel and what they want. But for now we'll have to be satisfied with wishing upon a ridiculously expensive star, and paying for it.

Kevin Kladakis is a University of Tampa senior majoring in writing.

We're majoring in a special subject. You.

Get ready to fly for only \$118 roundtrip—twice. Choose from many of the more than 180 Northwest Airlines cities in the 48 contiguous United States.



Day or night,
we're here to answer
questions or
help you in an
emergency.

You're part of a special group of people.

So we've created special privileges with you in mind.

The tough assignments and long nights of college will soon pay off. In fact, they already have.

As a student with a bright future, you're eligible for American Express® Cardmembership now. You see, we believe in your potential.

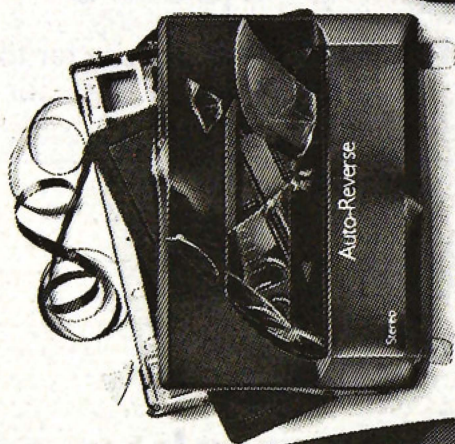
That's why we've made it easier for you to qualify for the Card on your own, even if you don't have a job.

And by becoming a Cardmember now, you can take advantage of the exclusive Northwest student travel privilege pictured here.

The fact is, we've added special student benefits like these because we're dedicated to serving our Cardmembers.

So apply now. About six weeks after the Card arrives, you'll receive your Northwest travel certificates.*

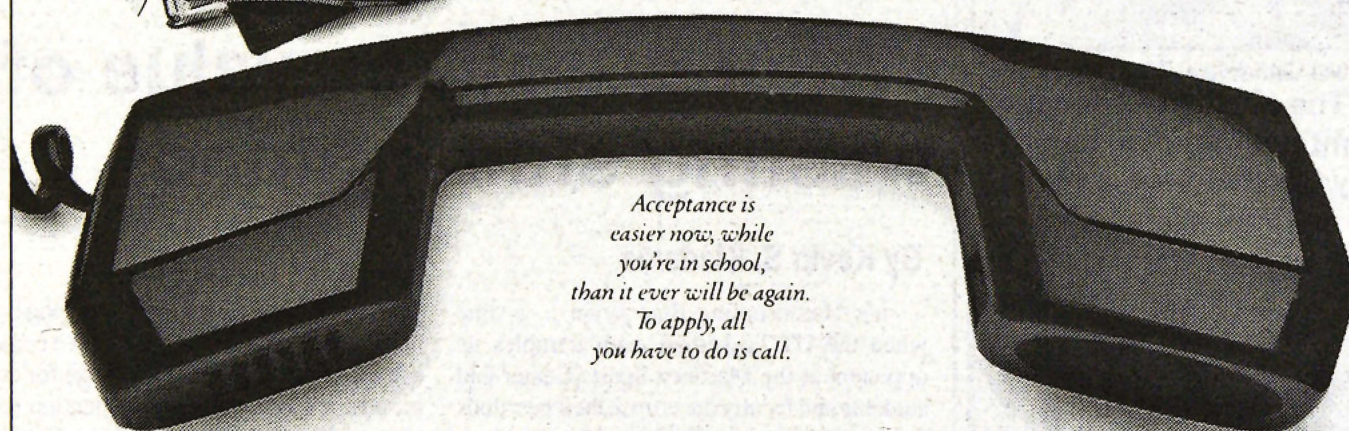
Call today. We're looking forward to welcoming one of our most important Cardmembers. You.



Exclusive discounts, articles, profiles
... American Express® Card CONNECTIONS is the
magazine designed especially for students.



If something you just bought is accidentally
damaged, lost or stolen—no problem. Just about
everything you buy with the Card is protected.



Acceptance is
easier now, while
you're in school,
than it ever will be again.
To apply, all
you have to do is call.



Membership Has Its Privileges®

APPLY NOW:

1-800-446-5389



*If you are already a student American Express Cardmember and have a question on this program, please send your written question, a copy of your student ID and class schedule to: American Express, P.O. Box 35029, Attn: Student Marketing, Greensboro, NC 27425. Fare is for roundtrip travel on Northwest Airlines. Tickets must be purchased within 24 hours after making reservations. Fares are non-refundable and no itinerary changes may be made after purchase. Seats at this fare are limited and may not always be available when you call. Travel must originate by certificate expiration date and be completed within 60 days of that date. Travel may not be available between cities to which Northwest does not have published routings. City fuel surcharges not included in fare from Boston (\$2.50), Chicago (\$5.00), Denver (\$2.00) and Florida cities (\$2.00). Certain blackout dates and other restrictions may apply. For complete offer details, call 1-800-446-5389. © 1990 American Express Travel Related Services Company, Inc.

THE AMERICAN EXPRESS® CARD. FOR STUDENTS MORE THAN EVER.

WUTZ, 1080 A.M.
YOUR CAMPUS RADIO
Is on the air

Mon — Fri 11 a.m.—1 p.m., 4 p.m.—12 p.m.
Sat — Sun 1 p.m. — midnight

Possible suspect in campus thefts apprehended

By MARIA MILLER
Assistant Editor

University of Tampa junior Mark Beasley rolled out of bed to answer a knock at the front door in ResCom A101 Tuesday, Feb. 13. To his surprise, he found someone standing in his apartment, the same person who fifteen minutes later was arrested on Kennedy Boulevard by UT police.

Eleven days after a spree of burglaries on the University of Tampa campus, a suspect may have returned to the scene of the crime.

"The guy was startled when I came out," said Beasley. "He asked if John was here. Then it clicked. I knew this was the same thing the guy said who broke in [to ResCom] a couple Saturdays ago."

Beasley learned of recent campus burglaries from reading the article printed in *The Minaret* and from talking to his neighbors in A102 and A103, victims of the Feb. 3 break-ins.

On Saturday, Feb. 3, while watching a movie, seniors Duane Brigio, Suzette Manganiello and a few of their friends were interrupted. "We heard two raps at the door followed by a man sticking his head in who said he was looking for someone," said Brigio, in the Feb. 9 issue of *The Minaret*.

"The guy used the same line used on Duane," said Beasley. "He asked me if John was here. I told him he was not, and he left. I immediately called the UT police department." By the time he got

off the phone and looked out the window into the courtyard, the man was gone. Beasley then spotted the man headed toward West. After informing some students across the hall that UT police were on their way to his room, Beasley hopped in his car to track the man.

"The guy had tried to get in the door to West but couldn't," said Beasley, who talked with UT police in the ResCom parking lot. The man headed down North Boulevard toward Kennedy, and, from Beasley's description, UT police spotted him.

"They pulled him over, frisked him and cuffed him," said Beasley.

Ten minutes after he got back to his room, Beasley received a phone call from UT police. The man they apprehended had been photographed and was being detained downtown.

Two days following this incident, Manganiello was called in by the UT police department to look at pictures of possible suspects. From Manganiello's description of the man she saw Feb. 3, UT police were able to come up with a picture.

"If you could see my composite and the guy in the picture," said Manganiello. "They were identical. The police guy said it [the resemblance] was incredible."

Both Manganiello and Beasley are sure they can identify the suspects they saw. The question remaining is whether they will identify the same man.

Strong turnout for first animal rights meeting

35 students concerned about treatment

MINARET STAFF REPORT

The University of Tampa Students for the Ethical Treatment of Animals held an interest session Thursday, Feb. 8 at the ResCom clubhouse. Attendance for the meeting was far higher than expected, according to one of the organizers, as nearly 35 students turned out. The meeting was geared toward educating about animal rights and what people can do to improve animal welfare.

The meeting was conducted by the four co-chairpersons of UT SETA: senior Jennifer Thomas, sophomores Amy Johnston and Helen Powell, and freshman Jon Courtney. They spoke alternately on topics such as medical and cosmetic testing, the fur trade, animal abuse, and vegetarianism. "In the time it took you to watch that clip," said Johnston after a

short video, "nearly 855 animals died in laboratories." The piece centered on alternatives to using animals in medical experimentation. Another video, titled "Britches," documented the life of a young laboratory monkey [Britches] who was rescued from a laboratory by animal rights activists after his eyes were sewn shut in a blindness experiment. "I would think that [the experimenters] purposes would be served a good deal better if they would use the same amount of research to find out about blindness from blind people" commented Grant Mack, President of the American Council of the Blind, in the video.

In addition to the videos and talks, Thomas, Johnston, Powell, and Courtney fielded questions from the group and provided vegan (containing no animal prod-

ucts) refreshments and photocopied information for the group.

Johnston was pleased with the large turnout. "I feel [the attendance] shows a genuine spirit of compassion among UT students to support an issue as important as this. Hopefully, the information we presented will be well considered and may possibly even change the way some people think."

Evidently, the meeting already has begun to have that effect. One person who came said that the meeting opened her eyes. "I came only because one of [the co-chairpersons] asked me to, but after listening to what they said I really have a different outlook towards animals and how they are used. Now I think I'll be more conscious of how I live and the effect it has on other creatures."

SALARY, from page 1

it's always understood."

"We need to determine appropriate salary levels for the university," Hegarty added. "I'm not sure national figures are the ones that are most appropriate."

Another project Rynder is pursuing involves a five-year comparison of changes in faculty salaries, administrative salaries, and student tuition costs. The university granted her request to receive a copy of its Internal Revenue Service 990 Form, a comprehensive financial report required of any tax-exempt institution. Rynder also has copies of the university's

990 Forms for the past four fiscal years, and she hopes to use this information to complete a report she is preparing in conjunction with the AAUP.

Rynder said the 990 Form "was delivered to me in what I consider to be good order and good time" but added that it would take several months to complete the study and that an outside expert would probably be recruited to sort through the documents.

"I think it would be interesting to take a look at a five-year pattern of trends in salaries," Rynder said.

In the meantime, Rynder will present the Faculty Salary Enhancement Resolution to the general faculty at its meeting Tuesday, Feb. 20. The current resolution is the result of presentations made at earlier meetings, and Rynder hopes the faculty can approve the measure before faculty contracting for next year begins, which is expected around March 1.

"The local AAUP thought this was something we could do for all of the faculty," Rynder said. "If [the resolution is not passed], we'll look in some other directions."

COLLEGE GRADUATES

Put your education to work—become a
Lawyer's Assistant
"The Career for the 90's"
at The National Center for Paralegal Training

- Oldest and largest graduate level ABA-approved program in the Southeast
- Employment assistance—over 1,000 employers in 38 states have hired our graduates
- 3 month day program with housing available
- 7 month evening program
- Diversified Curriculum—specialize in Litigation, Corporations, or Real Estate and Probate—including "Computers in the Practice of Law"

Meet with our representative
Wednesday, March 14, 1:00 - 5:00
Contact College Placement Office for appointment

The National Center for Paralegal Training
3414 Peachtree Rd. NE Atlanta, GA 30326
800-223-2618 In Georgia, call 404-266-1060

Please send me information about a career as a Lawyer's Assistant
Name _____
Address _____
City _____ State _____ Zip _____
College _____ Yr. Grad. _____
Phone: DAY () EVENING ()



**"America's Best
Dressed Sandwich"**

Now at 1155 S. Dale Mabry
(Next to Blockbuster)

**Thursday and Saturday Night
Specials!!!**
One dollar off any Combo Meal
(includes Bigger Bite Sandwich, chips,
and a 22 oz. drink for \$3.45)

286—9877

Coupons

Buy one sandwich, get a
second sandwich of
equal or lesser value
FREE w/ UT ID

Buy one sandwich, get a
second sandwich of
equal or lesser value
FREE w/ UT ID

French Tutor

Do you need help
or practice in
French Language
or grammar?

Call Amide Pecqueriaux
- Hayward at
888—7249

National Marketing
Firm seeks mature
student to manage
on - campus promotions
for top companies this
school year. Flexible
hours with earnings
potential to \$2,500 per
semester. Must be
organized,
hardworking, and
money motivated. Call
Jeanie or Lisa at (800)
592-2121.

AFTER Hours

Friday, Feb 16

Johnny Cash
Florida State Fairground
call TicketMaster for time and ticket prices
(287-8844)

Saturday, Feb. 17

Wish upon a Star
University of Tampa Homecoming
Sheraton Grand
9 p.m.
\$10

Beggars Ball
Cuban Club, Ybor City
9 p.m.
\$11 advance, \$15 day of event

Tuesday, Feb. 20

Molly Hatchet
RockIt Club
call TicketMaster for time (287-8844)
\$12 advance, \$15 day of show

Every Greek is a Somebody

Your One Stop Greek Shop!!

Greek Unique

THE COLLEGE CONNECTION

Remember ...

You can't be a Greek without us!!

Fowler Avenue at 51st Street
(813) 980-2137

Wanted

*Superior PA Resident Camp Seeks
Counselors and Specialists.*

*Fantastic Facility — Pools, Lakes, Sports,
Arts, etc.*

CAMP AKIBA
A GREAT SUMMER!

Interviewing March 9.
Call 974 — 2297 for more information.

UT Persona Profile #2 "The Granolas"

This week, *The Minaret* features the group that was once called "Hippies", but have now been renamed "Granolas." While they are a relatively small group on campus, most tend to be intensely active; finding crises and then finding cures.

Common names — Heather, River, Sarah, Rainbow, Harmony

First Word Uttered — "Save the Whales!"

Habitats — New Hampshire, Haight-Ashbury, communes, tents, anywhere where one can become one with the universe.

Hot Spots — The Granola's Theme: "Let's be mellow": The Hub, Tampa Bay Brewery, anywhere with trees and stuff, Masquerade ("But sometimes that scene really freaks me out.")

Role Models — Timothy Leary ("He did it in the name of science, man."), Abbie Hoffman, Jack Kerouac, Janis Joplin and a lot of other dead people.

Favorite Films — *Easy Rider*, *Woodstock*, *Up in Smoke*, *Hair* ("That 'Age of Aquarius' song is really groovy.")

Favorite Magazines — *Mother Earth News*, *HighTimes* ("It's filled with quick and easy recipes.")

Last Book Read — *The Electric Kool-Aid Acid Test* by Tom Wolfe ("Man, it's like our history.")

Last Term Paper Written — "Tetrahydracannubis as a Means of Enhancing the Time-Space Continuum"

Cars — Volkswagons (Bugs and Buses), Volvos (the older, the better)

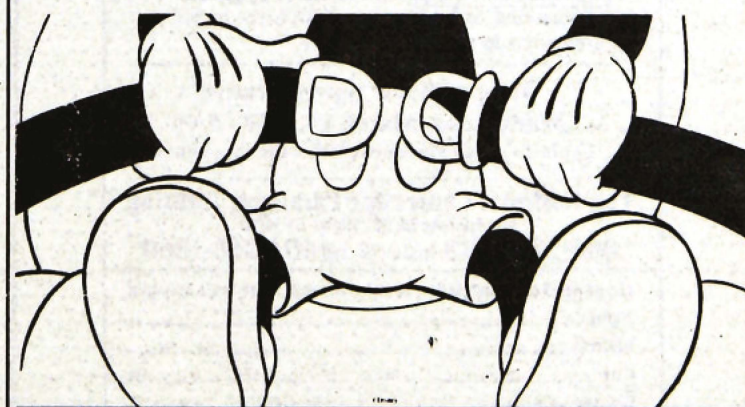
Overheard Saying —
"Peace, love and Jerry."
"Who are the Grateful Dead
and why are they following
us?"

Motto — "Tune in, turn
on, drop out."



Looking for a
fraternity, sorority,
or student
organization that
would like to make
\$500—\$1000 for one
week on-campus
marketing project.

Must be organized and
hardworking. Call
Jeanine or Lisa at (800)
592-2121.



Buckle Up For Spring Break '90

Madhouse mayhem lacks originality

New comedy relies on too many old gags

By MAYA LOTZ
Features Editor

We've all had our share of difficult houseguests. The ones who help themselves to the last of the Captain Crunch. The ones who make those marathon long distance calls. The ones who leave wet towels on the bathroom floor.

But Mark and Jessie Bannister's (John Larroquette and Kirstie Alley) houseguests make other visitors look like graduates from Swiss finishing schools. The pets they bring along with them—the cat, the snake, the elephant—cause the least of the inconveniences.

Louis Vuitton-slinging sister Claudia (Alison LaPlaca) transports Bloomingdale's to a spare bedroom. Cousin Bernice (Jessica Lundy) is required to remain in traction for the remainder of her pregnancy (a short six months). Next-door neighbor Dale (Robert Ginty) sets up his wood shop in the living room. And Nephew Jonathan (Bradley Gregg) directs his cocaine ring from the Bannister household.

These are just some of the annoyances that Mark and Jessie must endure when their relatives and neighbors move into the Bannister household in the new Orion Pictures release *Madhouse*.

Madhouse comes off more as an expanded television sitcom than a feature film. In their per-



formances as Mark and Jessie Bannister, Alley (of *Cheers*) and Larroquette (of *Night Court*) hardly deviate from their television roles. Desperately trying to keep their home sweet home just that, these actors spend the duration of the film suffering through one predictable mishap after another. What do you think happens when the next-door neighbor's bratty son's pet snake crawls into Mark and Jessie's sleeping bag? What ever can go wrong does go wrong until the Bannisters finally oust the freeloaders after Mark and Jessie set up a refugee camp for themselves in the backyard, and a SWAT team ransacks their home.

The madness begins when Mark's cousin, Fred (John Diehl) and his not-so-demure wife, Bernice arrive from Trenton, New Jersey to see all that sunny California has to offer. Their visit, for the most part, passes with little incident, until pregnant Bernice, as she says her good-byes, slips on

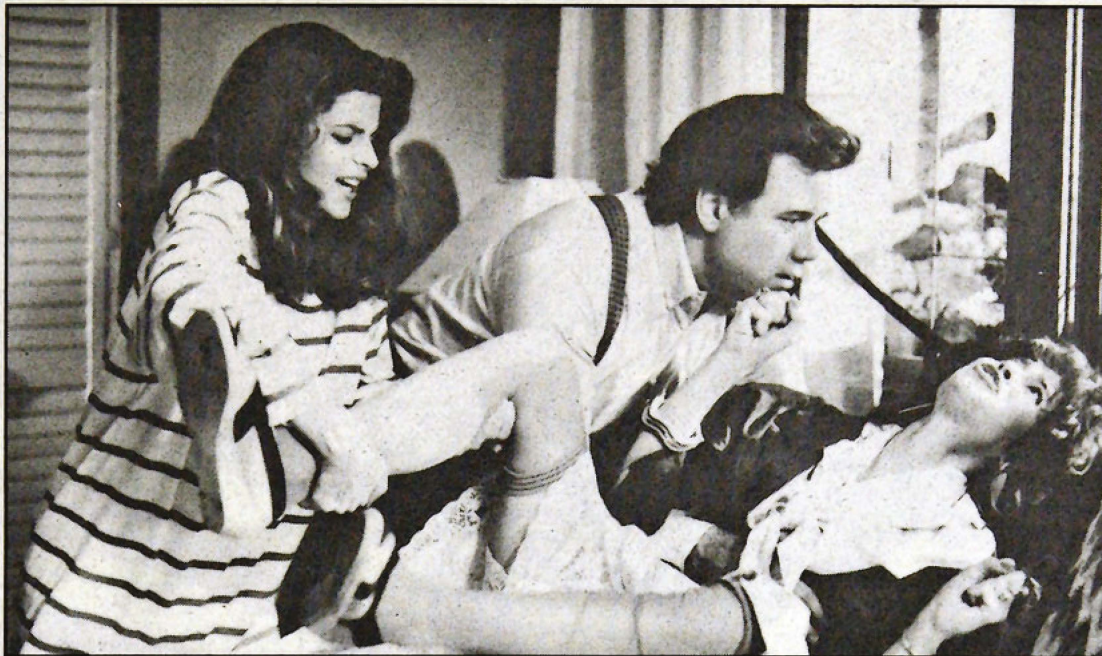


Photo courtesy Orion Pictures

It's no labor of love for Mark and Jessie Bannister (John Larroquette and Kirstie Alley) to cater to cousin Bernice (Jessica Lundy) in *Madhouse*.

the welcome mat and must convalesce in bed for the duration of her pregnancy. By far the most contemptible of the cast, her crude comments and constant complaining make for some of the hardest laughs in the film.

As if these characters are not a handful, Jessie's gold-digging sister Claudia and her son Jonathan demand not only a roof to sleep under but maid service

and premium scotch after she leaves her most recent wealthy husband whom she affectionately refers to as "that dessert rat." It's only a matter of time before the Bannister's divorced next-door neighbor and his adolescent children move in after their home burns to the ground.

Far from being a serious film, *Madhouse* does offer plenty of laughs, but they are laughs at ju-

venile and predictable gags we laughed louder at before. The ending especially is far-fetched. Just like a television sitcom, all is resolved in the end and everybody lives happily ever after. *Madhouse* is a cute film, but cute doesn't win Oscars. But, the next time you hear that relatives are coming for their annual visit, lock the doors, shutter the windows and suggest they take in a film.

Gender war still waged at UT

Honors program addresses age-old debate

MINARET STAFF REPORT

The argument has been fought since the beginning of time. Men vs. women. Who is superior? Now the battle between the sexes has reached the University of Tampa. As part of its continuing discussion on the perception or reality of gender differences, the Honors Program is sponsoring another series of lectures, to be held Mon. Feb. 19 in the Trustees Conference Room at 8 p.m. According to Dr. Frank Gillen, director of the Honors Program, the previous program on this topic was so successful that "a sequel" is being presented.

"Sexism [in rock music] is perpetuated by both male and female devotees."

Joe Musselman, senior

"Last time the discussion was so lively that they ran out of time. So many people wanted to speak that they couldn't fit [them all] in," said Gillen.

The first to offer his view on the issue will be Dr. Terry Snell, associate professor of biology, who will discuss the biological differences of men and women. A discussion from the theological perspective will be conducted by Rev. George Cave, associate professor of philosophy and religion.

Also speaking will be Diane Wilkinson, a civil rights activist of the '60's, has been a committed



feminist since 1970, a member of the National Organization of Women (N.O.W.) political action committee appointed by Molly Yard, a past president of Florida N.O.W., and is currently president of the Pinellas County chapter of N.O.W.

Students Joe Musselman, senior, and Ruth Isler, junior, will conduct a discussion on sexism in rock music, based on an experiment they conducted for Dr. Norma Winston's "Sociology of Sex Roles" course. "Sexism [in rock music] is perpetuated by both male and female devotees," said Musselman.

"This time we should have some very different views," said Gillen. "It should be a lively debate, and I hope the speakers will leave time for open discussion after the presentations."

While satisfactory answers to the age-old debate between the sexes may never be found, qualified opinions, one way or the other, will continue to be presented. Some of these, may be heard at Monday's conference.



Photo courtesy Alpha Phi Omega

Newly initiated Alpha Phi Omega members Earline Ashton, Tamami Naito, Candace Edwards, and Merrith Jones volunteer their time on one of their many service projects.

Greek Life

Alpha Phi Omega receives national charter

MINARET STAFF REPORT

The campus petitioning group of Alpha Phi Omega, the co-ed service fraternity, received its national charter at the annual APO convention at Clemson University on Feb. 8. The group has been active for three years at UT. Brian Nelson currently serves as president. Founding brothers include: Earline Ashton,

Karen Belanger, Duane Brigio, Rick Brochetti, Michele DeCroes, Elana Dunkin, Candace Edwards, Jill Friedman, Cherie Ginwalla, Paul Haase, Joseph Holbrooks, Merrith Jones, Asheena Khalak-Dina, Erin McKim, Tamami Naito, Melissa Schwartz and Jennifer Thomas. Advisers to the fraternity include Bill Faulkner, Dr. Eric Vlahov and Warren Kelly.

Members of the organization

have been involved in a great deal of campus and community service projects, including sponsoring the Holiday Benefit Ball in December which raised funds for Metropolitan Ministries. Other causes APO has been involved with include Special Olympics, the Boy Scouts, Meals-on-Wheels and Cystic Fibrosis. A formal initiation for members will be held in March.

WHEN YOU WISH UPON A STAR MAKES NO DIFFERENCE WHO YOU ARE • ANYTHING YOUR HEART
 DESIRES WILL COME TRUE • IF YOUR HEART IS IN YOUR DREAM NO REQUEST IS TOO EXTREME •
 WHEN YOU WISH UPON A STAR AS DREAMERS DO • FATE IS KIND SHE BRINGS TO THOSE WHO LOVE
 • THE SWEET FULFILLMENT OF THEIR SECRET LONGING • LIKE A BOLT OUT OF THE BLUE • FATE
 STEPS IN AND SEES YOU THROUGH • WHEN YOU WISH UPON A STAR YOUR DREAMS COME TRUE

*Wish
 Upon a
 Star*

Wish what you may
 Wish what you might
 We're wishing you here
 On Homecoming night

The University of Tampa
 Homecoming Dance 1990
 Sheraton Grand
 February 17, 1990
 9:00 p.m.- 1:00 a.m.
 \$10 per person

Men lose vital SSC game to FIT

By CARY BOGUE
Sports Editor

An afternoon game in steamy, sticky Hedgecock gymnasium is the last thing Spartan hoop coach Richard Schmidt wanted. It's what he got Saturday, though, thanks to SportsChannel Florida, which had originally planned to broadcast the game live and refused to change the time when they altered their own plans by moving the game to tape delay for the following Monday afternoon. The result: a 75-68 loss to #19 Florida Institute of Technology (20-2, 6-1), as the Spartans (20-2, 6-1) fell back into a tie for first place with the Panthers.

With the sun shining brightly, the temperature 85 degrees outside and well over 90 degrees inside, the walls themselves were actually damp. It was a beach kind of day. Bryan Williams and Drexel Deveau may have been better off at

the beach. While their bodies were at FIT, their minds appeared to be drifting along the seashores by highway A1A.

Although Deveau was able to keep Tampa in the game during the first half, a subpar three point performance in the final 20 minutes allowed FIT to pull away. Bryan Williams, who was held to 15 points, fell below 20 points for the first time in six games. At the other end, both Williams and Deveau took a defensive vacation.

"It would have been nice if Drexel had guarded [Astley Smith] once in a while. No wonder [Smith] got 21 points, they were all uncontested layups," said Spartan coach Richard Schmidt.

Both Williams and Deveau were quick to accept responsibility for their part in the loss. "I played terrible defense" said Williams. "Offensively, I was no factor. All I did was hurt our team today."

Deveau, who missed 5 of 6

from the free throw line, was equally self-deprecating. "I made some bad decisions today. If I can't do my job any better then maybe they better go to someone who can."

FIT jumped to an early 12-2 lead in the tape-delayed game. After a Spartan time-out UT scored the next five buckets to pull within two. FIT was able to maintain an edge, however, after a few lead changes and the score at halftime was to the Panther's advantage 42-38.

The Spartans trailed most of the second half and were able to knot the game up at 60, then 66, but FIT appeared too strong as they made all their free throws forcing the Spartans to foul in the final seconds.

"This win really puts FIT in the driver's seat," said Schmidt. "I've never seen them play this well. They are the top team in the conference right now."

Lady Spartans hoopsters halted for second time by FIT

By GLEN FINNERTY
Assistant Sports Editor

The rematch between the top two women's basketball teams in the Sunshine State Conference, Florida Institute of Technology and the University of Tampa, came on Saturday night. Once again, FIT got the best of the battle, defeating the Lady Spartans 59-51 before 200 fans at FIT's Hedgecock Gymnasium.

"We didn't convert on offense and we missed some key free throws," coach Tom Mosca said. "We had what is called a 'mental meltdown,' meaning we weren't mentally ready down the stretch. Our play was good enough to stay in the game, but it wasn't good enough to win."

Freshman Christi Hesse led UT with 12 points while sophomore Kim Dix added 11 off the bench. Four Tampa players shared the rebounding lead of five apiece: senior Julie Ratliff, sophomore Kelley Grider, Dix and Hesse. FIT forward Amy Fahrnow led the Lady Panther attack with 17 points and seven rebounds.

This game marked the first time in the past nine games that UT has been outrebounded. The Lady Panthers controlled the boards, 38 to 28, and thus controlled the outcome of the game.

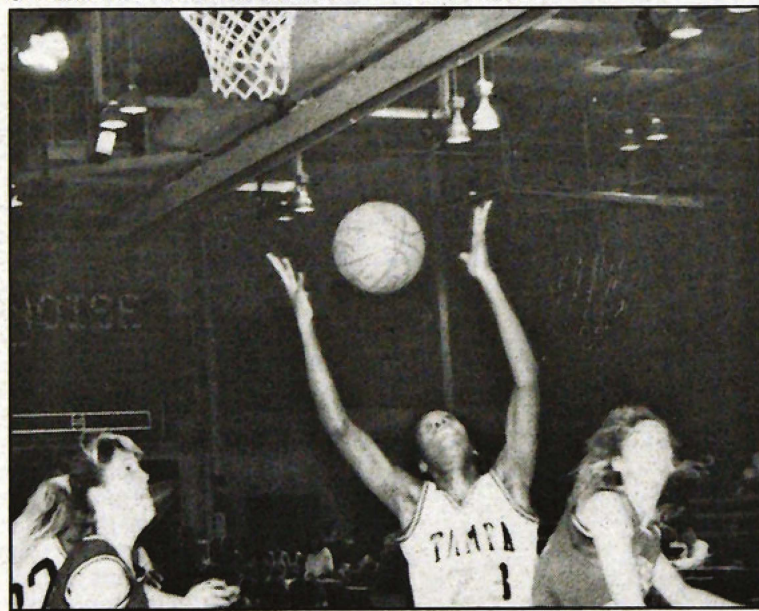
Despite the Lady Spartans' rebounding disadvantage, UT managed to stay close in the first half and went into halftime trailing by only three, 25-22. Tampa made only nine shots in the first half for a 47 percent clip. FIT also put the ball in the basket nine times and

could counter with only 33 percent shooting.

The second half featured back and forth action with no team able to take total control of the game until Tampa opened up a nine-point lead with five minutes remaining in the game. FIT kept its composure, however, and the Lady Spartans could not keep the flow of events from turning against them. The Lady Panthers overtook UT with a minute left.

"It just seemed like down the stretch when we had that big lead we would get intimidated when they did something good," Hesse said. "We had the momentum and we let them take it from us."

"They played tough zone defense down the stretch to get back into the game," Dix said. "And because of that, it was difficult to get the ball inside. We are keeping our fingers crossed for Barry to come through."



Minaret File Photo

Lady Spartan Kim Dix fights for a rebound against two FIT defenders. Dix scored 11 points and grabbed five rebounds for Tampa.

Deveau leads UT in 'ugly win' over St. Leo



Marty Solomon — The Minaret

Drexel Deveau goes up strong for a layup against a St. Leo defender. Deveau had a game-high 35 points.

By CARY BOGUE
Sports Editor

If Bob Barker had been master of ceremonies at Wednesday's basketball game against St. Leo he would have had to resign. No, there wasn't anyone wearing any furs or mistreating animals, but it was the farthest thing from a beauty contest you've ever seen.

In fact, Spartan coach Richard Schmidt may have described it best: "It was really ugly," said Schmidt. "Whenever we play St. Leo, the game is very ugly. I don't know why."

UT's 36 turnovers and 57% free throw shooting account for a lot of the ugliness. Another factor was the lineup change which saw Bryan Williams and Karel Dopwell watching the start of the game from the bench.

The Spartans (21-2, 7-1) got into foul trouble early, resulting in extensive substitution. Both Chris Henry and Steve Schmidt saw more action than usual.

"It's the same thing that happened there [at St. Leo]," said Schmidt. "Our guys got into foul trouble and we had to go to our bench."

Schmidt, who chose to pull Williams and Dopwell from the starting lineup, says he got mixed results. "I've been unhappy with some of our players' performances. I usually wait till after a loss to make a lineup change and the FIT game gave me that opportunity. Bryan hasn't been playing up to his ability. Defensively he isn't on the same page as the rest of us. I thought he had some good moments tonight, but Bryan needs more than good moments. He needs to put together 30-40 minutes of all-out effort."

"Now, I thought Karel responded all right. He came out and played pretty hard tonight."

UT was unable to gain a two point lead until the 15:02 mark when the score stood 14-12 after a layup by Drexel Deveau. Tampa's first 10 point lead came with 8:34 remaining in the first half when Bryan Williams hit a 3-pointer giving the Spartans a 32-22 lead. The Spartans' biggest lead of the half came on another 3-point shot, this time from Dopwell with 7:03 remaining, as UT went up 37-24.

St. Leo (10-12, 0-8) was able to pull within four, 45-41, at the half largely due to a 16 point first half performance by Pierre Augustin.

The second half began with four straight Monarch points as St. Leo pulled to a 45-45 tie with only a minute and half off the clock. The score was tied again at the 16:05 mark after Kevin Starnes fouled Augustin and he converted both free throws. The Spartans would not trail again, though, and established their largest lead of the evening as Deveau, who had a game-high 35 points, converted both shots on a one-and-one situation with 22 seconds remaining.

Tampa's win allowed them to keep pace with FIT who also won Wednesday at Eckerd. Both UT and FIT are 7-1 in the conference. If both teams remain undefeated for the rest of the season, a coin toss will determine who hosts the Sunshine State Conference Tournament.

UT travels to Miami Friday where it will play Barry College (8-14, 1-7) Saturday night at 7:30 p.m.. On Wednesday, Feb. 21 Tampa plays host to arch rival Florida Southern.

BEST FUNDRAISERS ON CAMPUS!

Is your fraternity, sorority, or club interested in earning \$1000+ for one week, on-campus marketing project? Must be hardworking and well-organized. Call Lisa G. or Myra at (800) 592-2121

GRADUATING SENIORS:

Now it's time for a career.

Prepare to work in law as a

PARALEGAL

at The National Center for Paralegal Training

MIAMI - FORT LAUDERDALE

- College degree or employee sponsorship required
- 4 month day / 8 month evening programs
- Employment assistance
- Faculty of practicing attorneys
- Classes in Miami or Ft. Lauderdale
- Student loans for qualified students

Meet with our representative

Tuesday, February 27, 9am - 12 noon

Contact College Placement Office for an appointment. Call or write for a free brochure and more information.

The National Center for Paralegal Training
1460 Brickell Ave., Suite 200, Miami, FL 33131



Pregnancy Tests

IMMEDIATE RESULTS
INSURANCE ACCEPTED
(O APPOINTMENT NECESSARY)

- Pregnancy Terminations
- Awake or asleep nitrous oxide available
- Professional, Confidential Care
- Individual Counseling
- Birth Control Services

INCLUDING PAP SMEARS and VD SCREENING

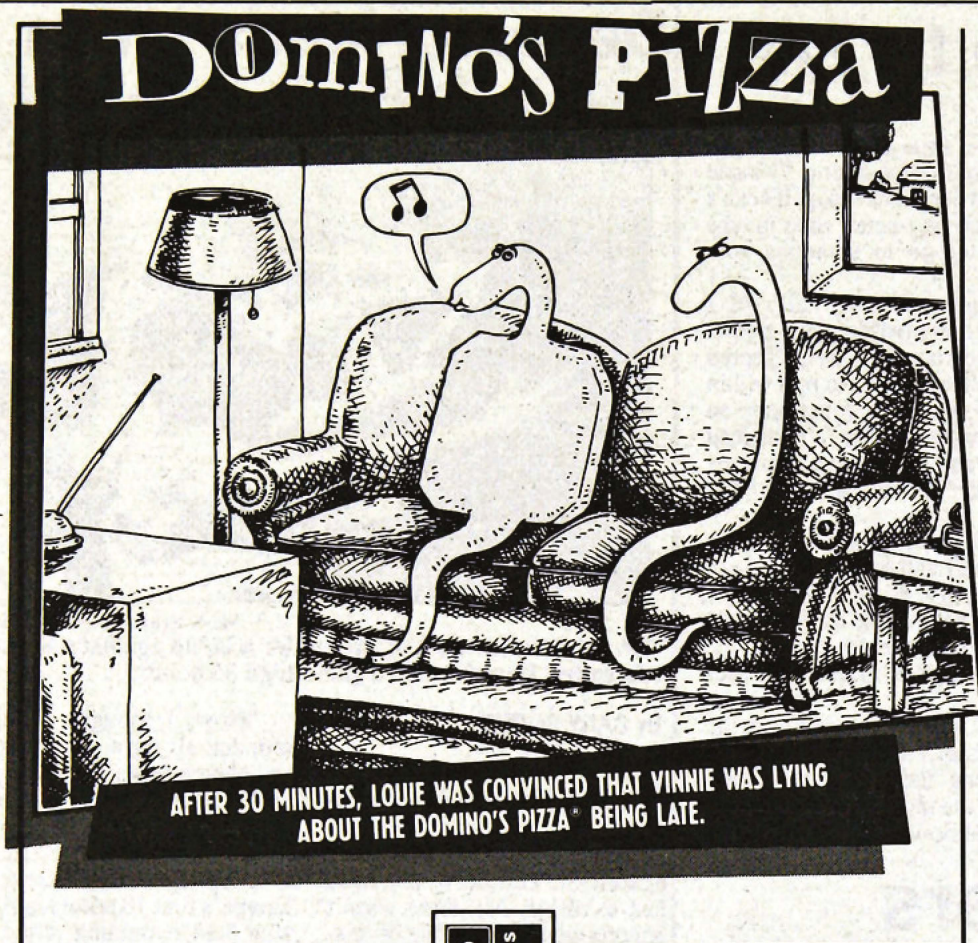
SOUTH TAMPA
251-0505

1302 S. Dale Mabry

NORTH TAMPA
961-7907

14704 N. Florida Ave.

•Member of the National Abortion Federation



IT'S TIME FOR DOMINO'S PIZZA.[®]
 Serving University
 of Tampa &
 Downtown Tampa:
221-1611
 1005 N. Tampa St.

Safety First!
 Domino's Pizza[®] hires only
 safe drivers. We check all
 driving records before
 hiring.

Delivery area limited to ensure safe driving. Drivers carry less than \$20. © 1990 Domino's Pizza, Inc.

CLIP AND SAVE

Pantastic Duo
\$9.99!

Just call and order TWO medium cheese Domino's Pizzas[®] and you pay only \$9.99! (Tax not included.)
 Coupon Necessary. Offer good thru 2/15/90.

Valid at participating locations only. Not valid with any other offer. Prices may vary. Customer pays applicable sales tax. Delivery area limited to ensure safe driving. Drivers carry less than \$20. © 1990 Domino's Pizza, Inc.

CLIP AND SAVE

Double Deluxe
\$9.99!

Just call and order TWO small original Deluxe pizzas each with Pepperoni, Sausage, Green Peppers, Onions and Mushrooms and you pay only \$9.99! (Tax not included.) Coupon Necessary. Offer good thru 2/15/90.

Valid at participating locations only. Not valid with any other offer. Prices may vary. Customer pays applicable sales tax. Delivery area limited to ensure safe driving. Drivers carry less than \$20. © 1990 Domino's Pizza, Inc.

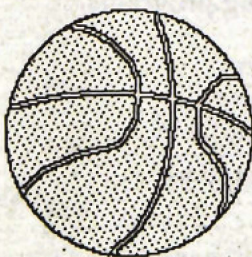
CLIP AND SAVE

Family Attraction
\$14.99!

Just call and order ONE large original cheese pizza and ONE large original pizza with FIVE delicious toppings and you pay only \$14.99! (Tax not included.)
 Coupon Necessary. Offer good thru 2/15/90.

Valid at participating locations only. Not valid with any other offer. Prices may vary. Customer pays applicable sales tax. Delivery area limited to ensure safe driving. Drivers carry less than \$20. © 1990 Domino's Pizza, Inc.

**Support
 Spartan
 Basketball**



UT baseball team wins one loses one to St. Thomas

By MARK JEROME
 Staff Writer

The No. 1 ranked University of Tampa Spartan baseball team continued its domination of St. Thomas last Sunday by slaughtering the Bobcats 15-3.

Sophomore Joe Urso, junior Paul Russo and senior Steve Mauldin had three hits apiece to pace an 18-hit attack. Russo, Mauldin and junior Glen Finnerty each homered, and senior Mike Simmons pitched five scoreless innings as the Spartans fed St. Thomas a dose of good old fashioned tan-hiding. Finnerty had four runs batted in and Russo had two.

Unfortunately for UT, its confidence may have been a bit too high. Tampa ended the two-day trip to Miami on Monday by being upset by St. Thomas 4-3 in the tenth inning.

Junior Sam Militello pitched six innings giving up only three hits and no runs in his second start of the season. Junior Russ Williams relieved Militello in the seventh inning with the Spartans leading 3-0. After retiring the Bobcats in order in the seventh, Williams was greeted with back-to-back doubles and a single in the eighth and was promptly replaced

by Pat Russo. With the Spartans leading 3-1, consecutive Bobcat sacrifices and a bloop single to right field tied the game at three apiece.

In the bottom of the tenth, after the Spartans failed to score in their half of the inning, the Bobcats hit back-to-back doubles to win the game.

Head baseball coach Lelo Prado hopes the loss was a learning experience for his team. "It was a great loss, if they learned anything. Our player's took them lightly. I told them if they let a team like this get back in the game they'll think they're the best. When we finally got around to turning on the switch to 'come-back,' it was too late. Next time, I promise we'll be ready."

Despite the loss, All-American Russo has upped his average to .444, with two home runs in just four games. Mauldin, another All-American, is hitting .412, while senior Kevin Langiotti is hitting .438.

All-American Militello has pitched 12 shutout innings, striking out ten, while allowing only three hits.

Tampa plays host to Valdosta State Saturday at 3 p.m. at Sam Bailey Field.

Women shatter St. Leo, clinch berth in SSC tourney

By GLEN FINNERTY
 Assistant Sports Editor

Hanging tough in the face of adversity describes how the University of Tampa women's basketball team has handled its past few games. The Lady Spartans sewed up a spot in the four-team Sunshine State Conference tournament by destroying St. Leo College 87-66 Wednesday night before a crowd of 175 at the Martinez Sports Center.

After a momentum-slowng loss to the Florida Institute of Technology on Saturday night, Tampa rebounded against the Monarchs and accomplished one major goal of coach Tom Mosca.

"This is something that was a season-long objective of this team," Mosca said. "This win secures us a spot in the conference tournament, but don't think that we aren't going to still try to win it outright."

As was the case the last time the two teams played, it was a battle of the Dix sisters as UT was led by sophomore Kim Dix's 18 points while the Lady Monarchs were led by senior Tonya Dix with 20 points and eight rebounds. UT freshman Christi Hesse had 17 points and senior Julie Ratliff had seven rebounds to lead UT. Freshmen Kristi Izor and Hesse chipped in six boards each.

The Lady Spartans (10-14, 6-3 in the SSC), opened up an early 16-8 lead, but St. Leo came back to take a 25-24 lead with a 17-8 run. It stayed close for much of the first half before Tampa opened up a little breathing room, taking a 43-35 halftime lead into the locker room.

UT took their eight-point lead into the second half and slowly started to pull away. Tampa put the game away on a 20-8 run that made the score 72-52 with 7:38 remaining in the game. It was all Tampa after that as the Lady Monarchs never again made a serious threat.

"We shot great," Mosca said,

"I was pleased with our half-court offense. Our pressure defense and full-court press were also excellent."

The Lady Spartans shot an outstanding 57 percent (35 of 62) from the field. St. Leo could put in only 38 percent (25 of 66) of their shots. UT also regained the rebounding advantage they had held for nine games before the FIT loss by pulling down 37 boards to St. Leo's 34.

"We rebounded and handled their press well," Hesse said. "We started out slow on defense and gave up some easy baskets, but we turned it around after that."

Tampa hit its foul shots at a 71 percent clip (17 of 24) while the Lady Monarchs shot 67 percent (14 of 21).

"They had a lot of turnovers and really couldn't handle our press," Dix said. "It was easy for me to score against their zone tonight because they would have two people out on the wing. This made it simpler for me to penetrate down the middle of the open lane and get the easy jumpers or layups."

Part of the reason for the victory was the outside shooting of Hesse. "Coach Mosca has been subbing me in for Julie [Ratliff] as of late," Hesse said. "I feel more comfortable in the guard slot. That's where I played my junior and senior years in high school."

UT still has a chance to win the conference, with some help from Barry University which has dealt FIT both of its losses. If Barry downs FIT one more time, Tampa could win the conference, provided that UT wins its last three games.

"It would be nice if we could play the conference tourney in our own backyard," Dix said. "It's a big advantage knowing that we're in our gym."

The Lady Spartans play at Barry University tomorrow night.

Skoe is a ray of Sunshine

By CARY BOGUE
Sports Editor

Sunshine, by Baby Face, that's Roscoe Brown's favorite song. It's appropriate, it fits his personality. So if you see a tall, thin man walking around campus with a mischievous grin on his face, chances are it's Roscoe Brown. Skoe, as he is known by his friends, is a fifth year senior entering his last year as a Spartan.

Richard Schmidt calls him an invaluable member of his team and most agree that his injury last year, which resulted in a red-shirt year after six games, is probably what cost the Spartans a fighting chance at the national championship.

Roscoe Nigel Brown was born in Clewiston, Fla. March 19, 1967. The son of Dorothy and Herb Brown, he is one of 13 siblings. Ahead of him are, starting with his older brother: Herb Jr., Lucy Ann, Michael T., Mary Alice, Georgia Ann, Constance D., Beverly D., Ruth Ann, Sonda and Sonia, William L., and Rosemarie.

According to Skoe's mother Dorothy, he was easy to handle. "Roscoe was a very amenable young boy. I never had a problem with him. He was always into sports. In the sixth grade he was already playing football, baseball, and basketball. He has always been a good boy. We've been very close."

While most people know Roscoe as Skoe his mother remembers another nickname. "We all called him 'Po Baby'. He was crazy about pork chops.

After 'Po baby's' injury this year some have called him injury prone. Mrs. Brown disagrees. "He doesn't like being injured. I just think it's bad luck. It only happens when he's away from home."

Mrs. Brown recalls when Roscoe was recruited by Richard Schmidt. "I was most impressed by coach Schmidt. He didn't come here with a chip on his shoulder. I live in the projects and that didn't bother him one bit. He wasn't in a hurry. He talked to Roscoe like a father. He told him the truth. He told him the way it was. He never lied. He said, 'I can't buy you cars and things like some coaches promise. All I can do is everything in my power to see that you gradu-

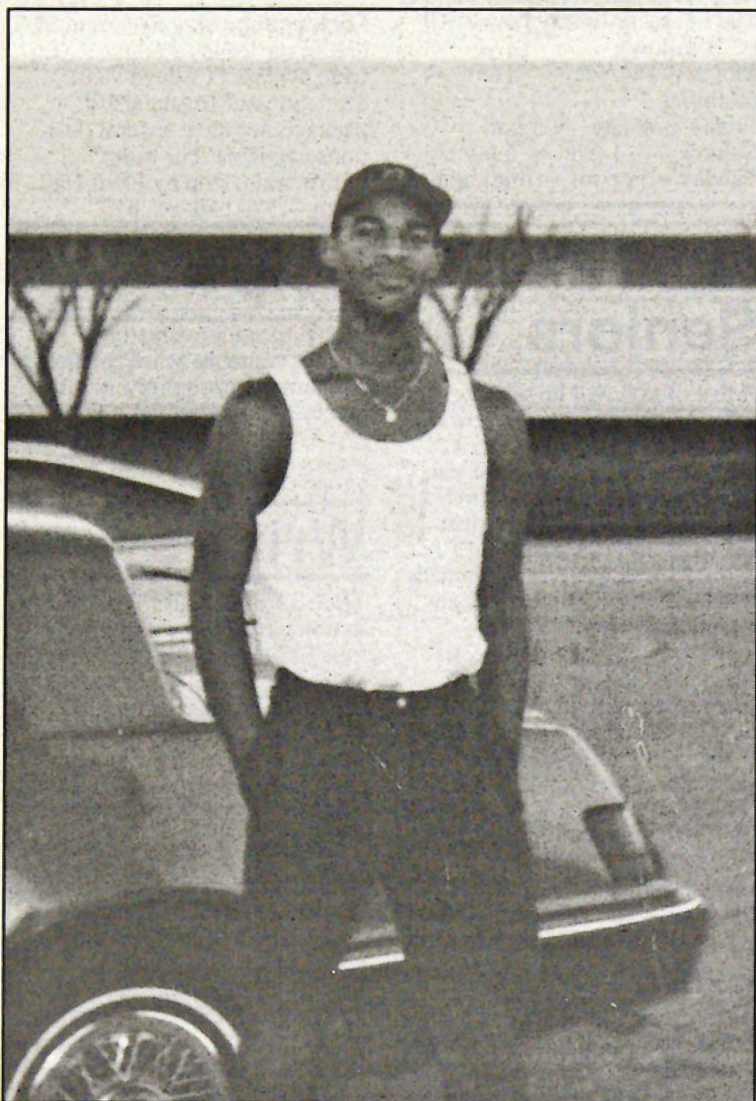


Photo courtesy Drexel Deveaux

Roscoe Brown leans against teammate Drexel Deveaux's car.

ate'. I am very happy with Roscoe's decision. It's made a man out of him. He has never given up on Roscoe. I admire coach Schmidt. He's like a father figure to him."

Roscoe grew up playing basketball at Riverdale High School. He was All-State and runner up for Mr. Basketball in the state of Florida. He averaged 22 points a game and 10 rebounds.

When he's not playing basketball, Roscoe enjoys listening to all kinds of music, except heavy metal. "Darrius Saunders and Wayne Fung are the people I hang out with the most. We go to each others rooms and watch games,

rent videos, and go to parties together, all the things friends like to do."

Roscoe likes this teams chances of going all the way. "We have the ability to go to the final eight. I like everyone on this team. We get along well. Everybody is more together than in year's past. In the past, three or four guys hung out and everybody else was on his own. This year we are all close. We stand by each other. I think that's important. If someone isn't doing well then two or three people come around to encourage him. We all talk to each other and support each other. That's what you've got to have."

Twins still love to compete

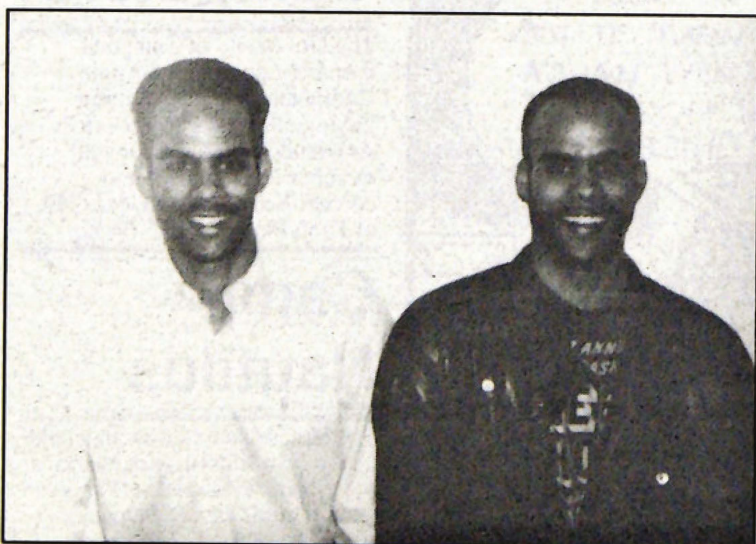
Brothers have psychic connection on basketball court

By CARY BOGUE
Sports Editor

Quick, which one of these two men is UT basketball player Chris Henry. Okay, so the beard gave Craig away. The resemblance in person is astounding. Craig Henry is Chris's twin brother. Both were born February 4, 1968. According to Craig, "We were very competitive, since people compared us. We always wanted to compete to see who was better. We played on the same basketball team from the time we were 9 years old. By the time we were Seniors we were known throughout South Jersey."

They still can't decide who the better player is. "I played point guard, said Craig. "He was shooting guard. He knew where I was going to be. If there was any psychic power between us we used it on the court."

Craig got a scholarship to San Francisco St. where he started at point guard. He quit after three



Cary Bogue — The Minaret

Chris and Craig Henry pose for a picture in McKay Hall Thursday night. They are twins. Craig is currently on his honeymoon.

years. "I was going to transfer but I ended up getting married and I started working. Right now I'm on my honeymoon with my wife

Valerie. We are staying in Orlando but are planning to go to Miami to see the Barry game."

On the front row with Cary Bogue



The women's basketball team is currently #2 in the conference with a 6-3 record. Wednesday night's victory over St. Leo College assured the Lady Spartans of a berth in the Sunshine State Conference Tournament. Tom Mosca has done a superb job, and his team is being given the respect it deserves by everyone. Almost everyone.

It seems the UT cheerleaders don't have time for the Lady Spartans. Their refusal to cheer at the women's games has stirred up quite a controversy, as evidenced by three subsequent letters to the editor on the matter.

After the first letter by Don Grider, father of Lady Spartan Kelly Grider, I was contacted by Carmen Gonzalez, the cheerleading coach. She was concerned about the bad publicity her cheerleaders had gotten, and wondered if I'd defend them "since you're such a good writer."

I had to tell Ms. Gonzalez that it would be hard for me to defend them when I agreed with what Mr. Grider had said. Gonzalez tried to convince me of her dilemma. "Coach Schmidt told us to go over and make an arch for the [men's] team when they came out of the dressing room, so the last couple of minutes we were preparing for that." She further claimed that her girls were not chanting FIT, they were chanting U of T, like they have all year long.

Having known Richard Schmidt for eight years, I assured her that he would never have concerned himself with whether the cheerleaders were forming an "arch" or not. Furthermore, I informed her that in the last eight years I have heard only the cheer UT, never U of T.

Still, it seemed like the cheerleaders deserved the benefit of the doubt. I suggested that if they could agree to cheer just the last 10 minutes of the women's game I would mention that as a step in the right direction. Ms. Gonzalez agreed to bring it up and get back with me at the next game.

I haven't heard from her directly since. After Gonzalez was unable to get the girls to agree, she wrote a letter herself. A condescending, supercilious, letter at that. Mr. Grider has every right to be insulted.

Lady Spartan coach Tom Mosca read the letter and was not pleased. "I think her statement—I was unaware of what a good Lady Spartan team we had—pretty much sums it all up," said Mosca. "I thought the cheerleaders were supposed to cheer at all the games. I don't see why women's basketball should be excluded. It's so late in the season now, though, it probably won't make any difference."

Following Gonzalez' letter, The Minaret received a second letter critical of the cheerleaders. At this point I felt it incumbent upon me to comment on the situation. I approached two cheerleaders and informed them of my predicament. The situation had reached a point where some sort of commentary was called for. Although I would prefer to write something positive about the cheerleaders, how they add color and spirit to the spectacle of college basketball, I told them that the current situation merited criticism. I asked them to give me some ammunition in their favor and once again suggested they cheer the last 10 minutes of the women's game. The told me they would discuss it, and I could meet them the following afternoon.

In retrospect I realize that by giving them that opportunity I was probably crossing some ethical boundaries. The story should have run without giving them that chance.

The following day brought a shock. The response I got was not what I expected.

"We are not cheering for the women's team, but thanks for the threat," said one UT cheerleader. "Why don't you take your attitude and get out of here. Tell it to our coach."

Assistant sports editor Glen Finnerty and I discussed the situation and decided that since I had become personally involved he should be the one to write the story. He felt strongly that the women's team was getting the short end of the stick, so I agreed.

Not long after our decision, our interim faculty adviser, Rick Short, came over to tell us that he had received a call from Dr. Marcy Kittner. She informed him that if I wrote anything I'd be in big trouble. She accused me of threatening the cheerleaders and asked him to resolve the situation before Friday, since Dr. Klepfer would be out of town that day. A call to Kittner from Finnerty yielded the following conversation:

Dr. Kittner, what is your position with the cheerleaders?

I have nothing to do with the cheerleaders.

Did you tell Rick Short that Cary Bogue better not write anything bad about the cheerleaders?

I wouldn't know Cary Bogue if he walked right past me. You better get your facts straight.

Dr. Kittner has nothing to do with the cheerleaders, but she does work with Gonzalez in the Computer center.

Next came a phone call from Athletic Director Bill Wall. Ms. Gonzalez and a number of the cheerleaders had been in his office accusing me of threatening them. Gonzalez warned him that if anything came out in The Minaret that she didn't like she would have me brought before the judicial board on charges of threatening another student.

A meeting of Finnerty, Minaret editor Lloyd Chatfield, Minaret adviser Andy Solomon, and myself resulted in our decision to go ahead with a commentary addressing the issue of the cheerleaders' failure to cheer for the Lady Spartans. But first, I made one last call to Wall, even handing the phone to Dr. Solomon who assured Wall the commentary would be written fairly and factually. Wall then informed Solomon that the cheerleaders had agreed to cheer at the women's games.

We therefore decided that there was little reason to run the commentary and cancelled it. It seemed the case was closed.

But it wasn't. The cheerleaders did not cheer at the next women's game. Their excuse? "We are understaffed and it's too much to cheer for both games." This despite their agreeing to cheer both games.

It's a shame that Ms. Gonzalez doesn't put as much energy into seeing that her cheerleaders treat everyone equally as she does into defending them from alleged "threats." It's a shame that our cheerleaders have attitudes like one who expressed, "I don't like cheering for women. They don't appreciate it. If they want us to cheer for them, then why don't they ask us?"

Until some changes are made, our women athletes will continue to be treated like they don't count.

Campus Recruiting

Spring 1990 recruiting schedule is as follows:

Feb. 20 — Metropolitan Life Insurance
Feb. 23 — Hacker, Johnson, Cohen & Grieb, Mass Mutual Life Insurance
Feb. 27 — NCR Corporation
Feb. 28 — Barnett Banks, Inc.
March 5 — Florida Engineered Construction Products
March 6 — XEROX Corporation, Electronic Data System
March 7 — Burdines
March 8 — The New England
March 9 — Florida Department of Revenue
March 12 — Arthur Andersen Tax Technology
April 2 — Danka Industries, Pizza Hut
April 3 — Airton, Inc., Pitney Bowes, Inc.
April 4 — Cameron & Barkley; Girardin, Baldwin & Associates, CPA's
April 9 — SunTrust banks
April 10 — Cental Intelligence Agency
April 11 — F.N. Wolf & Co.
April 12 — First Investors
April 17 — Radio Shack—Tandy Corporation
April 18 — Equitable Financial Services, State Farm Insurance Companies

Paper drive

The Residence Life is coordinating a paper recycling program. A local paper company is providing containers and free pick-up at the University Union of sorted paper (high-quality white & colored copier & computer paper & envelopes / low-quality green-bar computer paper / newspapers). All proceeds benefit local charities. For more information, please contact Debbie McKenna, ext. 416.

Study tour

Earn 4 semester hours credit and fulfill your Third World requirement. \$1549 cost includes round-trip airfare, three days in Mexico City, museums, folkloric ballet, historic sites; then travel to the historic city of Oaxaca for classes, lodging and meals with family, and guided trips to archeological sites, Indian villages, artisans' workshops. Contact Dr. Martin Favata, PH 205 or Box 111F.

Contest

National College Poetry Contest open to all college & university students desiring to have their poetry anthologized. Cash prizes will be awarded to the top five poems. Deadline: March 31. For information send SASE to: International Publications, Box 44044-L, Los Angeles, CA 90044.

Quilt

Quilt, UT's student literary magazine, is accepting submissions of poetry, fiction, essay, art NOW. Deadline is Feb. 28 but we love early submissions! Meetings every Monday at 8:30 p.m. in McKay Auditorium room 203 — anyone interested is welcome.

Career Workshops

The Personal & Career Development Center is sponsoring career services workshops.
Resume Writing:
Feb. 20 — 2 p.m. — 3 p.m.
Feb. 23 — 12 p.m. — 1 p.m.
Job Search Strategies:
Feb. 21 — 3 p.m. — 4 p.m.
Drop in Resume Reviews:
Monday — 5 p.m. — 7 p.m.
Tuesday — 10 a.m. — 11 a.m.
Wednesday — 10 a.m. — 11 a.m., 4 p.m. — 5 p.m.
Thursday — 11 a.m. — 12 p.m., 2 p.m. — 3 p.m.
Friday — 11 a.m. — 12 p.m.
Interviewing Skills:
Feb. 19 — 12 p.m. — 1 p.m.
Feb. 28 — 1 p.m. — 2 p.m.
These workshops will be held in Plant Hall room 306. For information, call ext. 218.

Summer Jobs

College students from across the country are being sought for summer jobs at one of the nation's most spectacular national parks. Glacier National Park, Inc., Montana, is looking for students to fill more than 900 summer jobs in all segments of the hotel and hospitality areas. Jobs include hotel front desk positions, maids, cooks, waitresses and bus drivers. Some students also participate in the guest entertainment. For details on jobs and salaries call Glacier Park, Inc., at (602) 248-2612.

Merl Kelce Library

The February library hours will be as follows:
Monday-Thursday — 8 a.m. — midnight
Friday — 8 a.m. — 5 p.m.
Saturday — 1 p.m. — 5 p.m.
Sunday — 1 p.m. — midnight

Graduating Seniors

-Most of you will be seeking full-time employment following graduation and the Placement Office is available to assist you. It is extremely important for you to register with the Placement Office as soon as possible.
-This semester over 40 organizations will visit UT to interview graduating seniors. These interviews will begin Jan. 23. Many position vacancies are listed in our job notebooks. Several openings are for students in the liberal arts and social sciences.
-For seniors relocating to another state after graduation, we list jobs available in Virginia, Pennsylvania, Iowa, Ohio, Maryland, Massachusetts, New Jersey, New York, California, Kentucky, Texas, Wisconsin, Michigan and Illinois. Those seeking employment in states not listed should ask for information. We are located in PH room 302, ext. 236. Please call or visit our office as soon as possible.

Relationships

If anyone is interested in how to develop and maintain healthy relationships, there will be an on-going group; one for males and one for females. Any person interested in joining one of these groups must sign up in Plant Hall 301 or call ext. 218 today. A minimum of five are needed for each group.

Trivia quiz

The winners of the Multicultural Trivia Quiz are:
Charles Barmby, Delo — first prize — dinner for two at the Cauldron restaurant
John Collins, commuter — second prize — lunch for two at The Thailand restaurant
Paul Pignatari — third prize — \$10 gift certificate

College Work study

Looking for a way to earn money and never leave campus? If you were awarded College Work Study in your financial aid package, we have several positions available. For more information, stop by Plant Hall room 443 or call ext. 410.

Help

Problems with overeating? There's someone who can help. A treatment group for bulimia meets at USF starting in February. The group will meet for 12 weeks. Call Madaline at 974-2496.

Writers

Quilt's Coffeehouse Weekend fiction workshop with writer Jane Smiley will be held March 3 at 10 a.m. If you are interested in submitting a short story (3000 words or less by Feb. 15) or sitting in, leave your name, story and phone number in Box 2732.

Job choice

"If you don't know where you're going, you may end up somewhere else." Are you sure you're headed for the right career for you? Join the career exploration group on Mondays 7 to 8 p.m. in PH 306. Sign up in PH301.

Writing Center

The Saunders Writing Center has opened its doors for the spring semester. The Center offers assistance with writing assignments from any course and with personal writing projects of any kind. The Center is located in PH 323, and its hours are Monday and Thursday 10 a.m. — 3 p.m. and 5 p.m. — 9 p.m.; Tuesday and Wednesday 10 a.m. — 3 p.m.; Friday 10 a.m. — 1 p.m.; and Sunday 5 p.m. — 9 p.m. Drop in or call ext. 244 for an appointment.

Keynotes

Your guide to on-campus housing sign-up procedures for 1990-1991. Every student will receive a copy in their UT Box prior to Spring Break.

Computers

The University of Tampa is preparing an order of Apple Computer products. Volume buying allows for lower prices. Any students, faculty or staff member interested should contact Brian Garman, ext. 349, or Dion Philipon, 875-0406.

Camp Nautilus

Spend your summer on an island. Camp Nautilus-Blacks Island, a boys' camp two miles off shore and 35 miles east of Panama City, Fl, is hiring. They need counselors, kitchen staff, a camp nurse, and activity leaders for sailing, fishing, diving and boating. Write to: Camp Nautilus, P.O. Box 945, Port St. Joe, Fla. or call (904) 227-1419.

Refund

If you have taken a production course in communications and you are not a Communication major you may be eligible for a \$100 damage deposit refund. Call ext. 216 to determine eligibility.

Tape return

If you have taken a production course in communications and have not picked up your final tapes, please do so. See Dan or Mary Ann, NC-8.

Employment

Looking for a part-time job? The Office of Placement Services may be able to help. Last semester we posted over 2,500 part-time jobs available to students. Many jobs are within walking distance. Come by and look through a job book and fill out a form if you are interested in temporary work. Stop by PH room 302 or call ext. 236. Hours are 8:30 a.m. to noon and 1 p.m. to 5 p.m.

Lecture

The Honors Program is sponsoring five speakers who will address the perceptions and reality of the effects of differences between men and women. The discussion will be held in the Trustees Conference Room at 8 p.m. on Monday, Feb. 19.

Personals

The sisters of Alpha Chi Omega would like to congratulate our new initiates: Heather Croft, Caroline Davis, Donna Donati, Daryl Fahey, Ute Herrman, Lani Liakos, Britt Lorish, Sandi Melchionne, Mary Snellman, and Tara Tobin. We love you all. The good times have just begun. We would like to welcome our new pledges: Tammy Berger, Michele Kaminski, and Becky Tozzi.

The Epsilon Theta chapter of Delta Gamma would like to congratulate and welcome their newly initiated sisters: Nicole Ruby, Kelly Runey, Laurie Wiest, Kristin Strammer, Julie Pettibon, Sandy Levi-Appel, Jennifer Mignone, Denise Disco, J. J. Mink, Debbie Rosmilso. Love, Sisters of Delta Gamma

The sisters of Delta Zeta would like to welcome our shining new Initiates. Congratulations Deanna Brewer, Kim Austin, Tara Bellion, Piper Yerks, Danielle DeHaven, Kelli Stover, Julie Fowler, Katie Livingston, Erin Euler, Kim Crotty. Love, Sisters of Delta Zeta

Suz and Rich, Congratulations!!!!!! Heaven doesn't suck.

R- D. not Trevor. Sorry about chips. It was J. H&H

CcCé, Sorry about the late V-Day and B-Day, but the care package should take care of it. Remember, we're too alike! Get ready for a kickass break! Mr. Cheerful



HARD-PURE CORNOGRAPHY