

THE UNIVERSITY OF TAMPA

# Journal

FOR ALUMNI & FRIENDS

VOL. IX, NO. 1 SEPTEMBER 1993



THE ANNUAL REPORT ISSUE





*The University Of*

T A M P A

# *Journal*

The University of Tampa *Journal* (USPS 748-810) is published four times a year by The University of Tampa, 401 W. Kennedy Blvd., Tampa, FL 33606-1490, with issues in September, December, March and June. Second-class postage paid at Tampa, FL. Opinions expressed in the *Journal* don't necessarily represent those of The University of Tampa faculty or administration.

**Grant Donaldson**

Editor

**Anne Rowland**

Designer

Contributing Writers:

Eleanor Jordan, Rebecca Morgan, Gil Swalls

Contributing Photographer:

Tommy Thompson

POSTMASTER: Send address changes to the *Journal*,  
The University of Tampa, Box H, Tampa, FL 33606-1490.

The University of Tampa is an Affirmative Action/Equal Opportunity Employer.



# THE UNIVERSITY OF TAMPA REPORT FOR THE YEAR 1992-1993

*From President David G. Ruffer*

**T**he year 1992-1993 was the **sixty-second** in the life of The University of Tampa and the second during my leadership. As I have described on other occasions, my plan for development of the University was deliberately cautious and circumspect.

During 1991-1992, through discussion and investigation, we developed an understanding of the way the University worked and the challenges that it faced.

Although some changes were made toward the end of that year, most notably in the leadership of our enrollment management efforts, it was a year of developing understanding.

During the summer of 1992 I outlined my analysis of the situation in a booklet titled **"A Liberal Arts University for a New Millennium."** The intent of that booklet was to set forth the context within which change would occur, and the agenda for that change.

Much opportunity was provided within the University for discussion of the ideas within the book, and many suggestions and ideas were presented.

During 1992-1993, the nature of those changes began to take form with the development of Quality Process Management. The work that has been accomplished was detailed in a second booklet titled **"Quality Process Management for The University of Tampa."**

At this early date, the signs that the Quality Process Management structure will be successful are numerous. I am optimistic that such success will continue.

Our plan has always identified the 1993-1994 academic year as being the most challenging as many of the changes we are implementing begin to be felt throughout the University. Early indications are that such a view of the year is not exaggerated.

Within this context, this report will give you some glimpse of the activities that filled the University during 1992-1993.

## GENERAL ACADEMIC INITIATIVES

As the state universities proved to be unable to serve the needs of all of the community college students, the University continued to develop articulation agreements with community colleges.

Twenty-five agreements with two-year colleges have been negotiated and will facilitate the transfer to UT of community college graduates who hold the Associate in Arts degrees.

The Joseph Campbell Students Program, modeled in part after the Honors Program and inspired by the work of the late Dr. Joseph Campbell, will take on the special mission of developing talented students of unrealized potential during their academic journey through UT.

The Honors Exploration Program provides an opportunity for students whose intellectual curiosity and academic prowess developed slightly later but who have the potential to be Honors students.

A "kick-off" visit of the University's newly designated liaison from the Southern Association of Colleges and Schools occurred on Jan. 22. The visit marked the start of formal preparation for the decennial visit to UT by a Reaffirmation Team in the spring of 1995.

## COLLEGE OF BUSINESS

Twenty years ago, UT began its MBA program, designed to meet the needs of business practitioners, scheduled in small classes on weekday evenings and offering an environment conducive to critical thinking and learning.

Changes include: growth in students (59 in the first class vs. 380 currently); growth in program options; growth in the percentage of women (very few in the first years vs. nearly 50 percent now); and, a dramatic increase in student diversity.

Graduate candidates now represent 139 undergraduate programs throughout the U.S. and abroad and many drive from areas far beyond Tampa. The



**President David G. Ruffer**

program continues to grow with the number of students up eight percent from fall 1991 to 1992. Our efforts to target minority enrollments resulted in a 52 percent increase.

During the year 31 students were placed in internship positions.

## NEW CENTER FOR LEADERSHIP

An exciting addition was added to the College of Business late this year. Like the Centers for Quality and Ethics, the new Center for Leadership was designed to provide important support for a critical aspect of business and individual success. Teaching the craft and science of leadership is one of the Center's main objectives, but it will also offer consulting and applied research services to businesses on a selected basis.

## G.L.O.B.E.

During the past year the College of Business began using a \$160,000 Project G.L.O.B.E. (Global Links—Organizations & Business Education) grant to improve international trade education for all business students and faculty.

*Continued on Page 2 . . .*



## Report

*Continued from Page 1*

Recognition was recently provided by AACSB as we were one of only three universities nationally that were approved as "AACSB Candidates."

### COLLEGE OF LIBERAL ARTS AND SCIENCES

The Committee to Advance the Core, after two years of intensive work, proposed to the faculty a "nine-goal" outline for a new general studies curriculum, to be called the UT Baccalaureate Experience.

The high points of the new Baccalaureate Experience curriculum include a Writing Intensive Program, a Discoveries Seminar for orientation, and a proposal for the Global Issues Program.

In addition, the Committee has begun work on the development of a Baccalaureate Cluster for first-year students in their second semester of course work; a restructuring of requirements in both Math and Computer Science; and a long-term strategic plan for ongoing core reform.

### MASTER'S OF NURSING ADMINISTRATION

A Master's of Nursing Administration program will begin in January, 1994. This is a joint venture between the two colleges. Students will take courses in both units to prepare to become nurse/administrators.

### CERTIFICATE IN GERONTOLOGY

The faculty approved the Certificate in Gerontology which requires students to take 18-20 hours of courses and will prepare those who are majoring in such fields as sociology, psychology, and social work to specialize in work with the elderly.

The College added two new academic support facilities: a six-station, state-of-the-art Sony LLC 9000 language laboratory, and a \$26,000 computer laboratory in the Department of Nursing. The latter was entirely paid for by a grant.

### SCHOOL OF CONTINUING STUDIES EVENING COLLEGE

The primary goal of the School of Continuing Studies over the past two

years has been to design and implement a comprehensive Evening College for mature students desiring to pursue a part-time degree program in a setting convenient to their work place.

Evening College features include small class size, close and informal interaction between students and faculty, "streamlined" admissions and registration procedures, and a full range of evening support services.

During the 92-93 academic year, the number of degree programs marketed through the Evening College was expanded to 10, including the MBA and a BA in psychology. It is likely that Evening College can grow to 600 students or more by the end of the decade.

### INTERNATIONAL EDUCATION

A comprehensive data base of the study abroad programs offered by more than one hundred foreign and domestic institutions on six continents has been developed.

A formal affiliation agreement has been signed with the American Institute for Foreign Study (AIFS) providing full-time UT students with access to some 30 AIFS programs in many parts of the world.

During the past year, meetings were held with representatives from more than 10 international universities to discuss potential student/faculty exchange programs.

A formal agreement was signed with Universitas Nebrissensis in Madrid through which 10-15 Spanish students will attend UT each year. A similar agreement is being worked out with institutions in France and the Netherlands.

As a result of these negotiations, an excellent start has been made toward expanding the number of European students attending UT, as well as placing UT students and faculty in appropriate foreign study experiences.

### SPONSORED RESEARCH

Since June 1, 1992, twenty-nine grant proposals were submitted to some 22 different agencies. Of these, nine already have been funded at \$332,229, 14 have been declined, and six remain pending with requests totaling another \$350,238. These totals compare favorably with

1990-91 when there were 18 proposals and seven awards totaling \$205,080.

### FINANCIAL MANAGEMENT

Fiscal year 93 was a difficult year due to a variety of reasons. It was a financial challenge given a \$900,000 shortfall of tuition and related revenues and unplanned budget additions and overruns. By year's end the University produced a surplus of \$71,000, the smallest of the four previous years, but on the right side of the ledger.

### STUDENT ENROLLMENT

Thirty six percent of the students who enter each Fall will complete their degrees at UT. The retention focus for this year will be to improve the retention of the new freshmen class to 73 percent.

The areas which will receive special attention during the 1993-1994 enrollment year are:

- Revision of the financial aid program.
- Development of technological support.
- Development of new publications and videos.
- A focus on international students.
- Development of research capacity.
- Improved retention for the new Freshmen class.
- Continued work with local schools.

### FUND RAISING AND UNIVERSITY RELATIONS

Total giving was \$1,066,523 and does not include any state grants or gifts-in-kind. This reflects a 6 percent increase in comparable totals to last year.

The University received more than 1,900 gifts which was an increase of 18 percent from 1991-92.

The unrestricted Annual Fund total was \$647,000 which was 13.5 percent more than last year.

Total giving to the Sword and Shield Club was about \$98,000, an increase of more than 28 percent over last year.

Over 70 percent of faculty and staff were donors, an increase of 15 percent from last year, and their gifts surpassed \$30,000.

The number of alumni donors exceeded 1,000 for the first time and was a 32 percent increase over last year.

Corporate gifts almost doubled in number and dollar amount.

**UT**



# The Vision Quest

The following speech was delivered to the new class during Convocation on Aug. 24 at Falk Theatre by Dr. Constance B. Rynder, recipient of the Louise Loy Hunter Award for Distinguished Teaching.

**I** have just returned from spending my summer among the Eastern Band Cherokees of western North Carolina. Each August when I leave my Indian brothers and sisters and return home from the mountains, I experience culture shock (and this year is no exception!) It's not just the awful heat of Tampa in late August. It is also the adjustment from Indian Time back to Industrial Time. We Anglos measure time in minutes, hours, days—we are wedded to a schedule, the clock, and the relentless pace of the Industrial World.

Native Americans, however, tend to measure time in years, generations, even centuries; they are wedded to the rhythm of nature. Perhaps that is why they have such respect for all living things.... Tribal Cherokees, like most traditional Indians, are steeped in spirituality, and they practice rituals that reflect their connectedness to all forms of life, plant and animal.

Among the Cherokee, as with other tribes, it was a tradition that a youth (and often, a maiden) went on a Vision Quest, usually by the time they reached age 16 or 17. Seeking a Vision was—and in some remote communities still is today—a ritual in which the young man or woman goes out to find him or herself, through prayer, fasting, wandering in the wilderness, and sleep deprivation for three to seven nights in a row. The seeker hopes to gain a vision which will empower him/her in certain ways, and will provide some sign of the special gift or talent that will shape the young person's adult life.

The Vision Seeker usually has a guide—an older man or woman—who acts as a mentor, teaching the young

person what he needs to know before he begins his quest.

The Vision Seeker then sets out alone for a secluded place, far from family and friends. Here, in the wilderness, he prays to the four directions, refrains from food and sleep for days on end, and tries to connect with the forces of nature that are, for him, part of the sacred hoop of life.

While on his quest, he may be visited by a sacred bird or powerful animal, or even the Great Spirit. He hopes this visitor will empower him with special "medicine," that is, a personal talent or gift that will give him strength and wisdom in his future life.

If the Vision Seeker is successful, he returns from his quest with new powers, and a sense of his (or her) special place in the clan, the tribe, and the larger universe.

This rite of passage for young Indians is both intensely personal and at the same time community-based. He shares his experiences with his mentor, and sometimes re-enacts part of the quest for his family and fellow villagers so that they, too, will know what role he is destined to play in the life of the community. Indeed, the visionary who does not share what has been conferred on him for the benefit of many, risks having the vision turn on him and destroy him.

The Vision Quest was essential to shaping a young Native American's adult identity. In some tribes, a young man could not leave his mother's lodge and become a recognized tribal member until he had gone on a Vision

Quest. Although it was less common for young women to go in search of a vision, those who did—and were fortunate enough to have visions—were regarded as the absolute equals of men.

Each of you new students sitting here this afternoon is about to embark on a



Dr. Connie Rynder delivered this year's Convocation address.

Vision Quest of your own—a Journey of Discovery. For you, it will begin tomorrow as you meet with your Discoveries instructor and catch a glimpse of the opportunities that await you on your journey. It will continue over the next four years as you seek new knowledge and awareness.

Part of your challenge at The University of Tampa will be to discover what your particular talent or gift may be; to develop that talent to the best of your ability; and then, put it to use for yourself and for the larger human community.

We, your mentors, will not ask you to fast, pray to the four directions, wander alone in the wilderness, or stay awake for seven nights in a row! But, we will ask you to endure long hours of study, and face tests of your intellectual growth. We will ask you to stretch your mind and reach for greater wisdom. We will ask you to seek a Vision for yourself. For, it is you who must provide enlightened leadership for *your* clan, *your* tribe, and the larger universe in the next century.

So, Class of 1997, welcome to your Vision Quest. May each of you be successful in gaining a Vision of who you are and what you can contribute to our world. May you be inspired by your Journey, and may you enjoy the gifts that you discover.

Ah ho!

UT

---

*"We will ask you to stretch  
your mind and reach for greater  
wisdom. We will ask you to seek  
a Vision for yourself."  
— Dr. Connie Rynder*

---



# Year in Review: Can It Get Any Better?

By Gil Swalls

Assistant Athletic Director

**U**nlike the good ol' boys sitting around the campfire in the commercial making the profound philosophical statement, "Men, it doesn't get any better than this," —for The University of Tampa Spartans, it always seems to.

Last year at this time, we reported on the Spartan baseball team winning its first NCAA national championship to culminate the University's most successful season since varsity sports were reinstated in the early 1980s. Yet a review of the past 1992-93 year shows the Spartans have truly outdone themselves.

Tampa's baseball program, under head coach Lelo Prado, became the fifth school in NCAA history to win back-to-back NCAA national championships in baseball, a feat which completed a year in which Spartan fans were dizzy with excitement.

UT captured four Sunshine State Conference championships, saw seven different teams appear in the NCAA Top 25 polls and six advance in their respective NCAA tournaments.

## Men's Soccer

Tom Fitzgerald's soccer team came within one goal of an NCAA title when the Spartans fell to Southern Connecticut State 1-0 at Pepin Rood Stadium,



George Fotopoulos

site of the Final Four tournament where over 3,000 fans viewed the action each night. The Spartans, SSC champions, defeated Oakland University (Mich.) in the semi-finals. Senior forward George Fotopoulos was named by the coaches' association the national on-field player-of-the-year while Ulf Lillius was the Final Four offensive MVP.

## Women's Volleyball

In the Martinez Sports Center, Chris Catanach's volleyball team was also dominating SSC play winning the league championship. Tampa advanced to the South Region final and finished its season 27-9, ranked 13th. Katia Serkovic earned All-America honors despite missing the final third of the season with an injury.

## Cross Country Running

Both the men's and women's cross country teams, under Coach Peter Brust, placed second in the SSC Championship meet. Tampa's Gunnar Svendsen was the men's individual medalist for the second time in three years.

Momentum carried into the winter season with successful campaigns by the men's and women's basketball and swim teams.



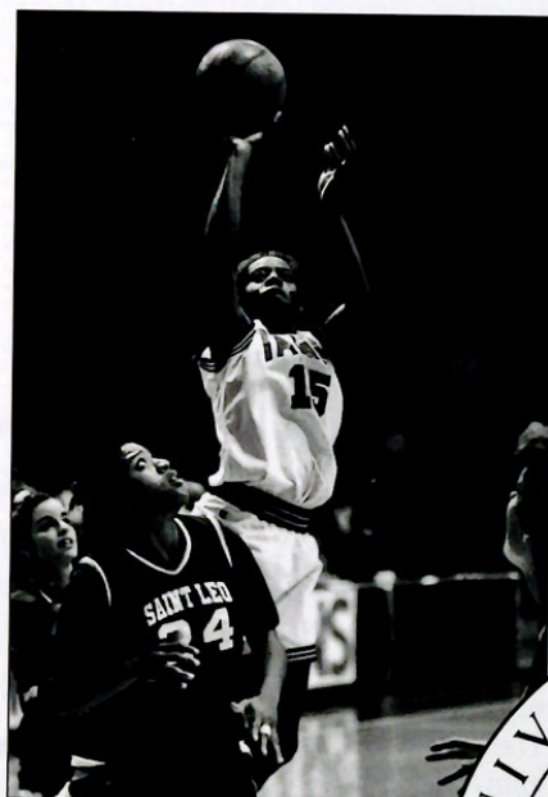
DeCarlo Deveaux

## Men's Basketball

UT's men's basketball team completed the season at 25-5 for Coach Richard Schmidt, was ranked No. 6 heading into the NCAA tournament, but lost its opening round game to Delta State after winning the SSC regular season conference championship. DeCarlo Deveaux, the SSC scoring champion, earned NABC second-team All-America honors.

## Women's Basketball

The women's basketball team finished 14-12 for Coach Tom Mosca's third consecutive winning season. Crystal Ashley was a fourth-team All-America selection by the American Women's Sports Federation.



Crystal Ashley

## Swimming

The women's swim team placed 18th and the men 22nd at NCAA Nationals under head coach Ed Brennan.





Shannon Abarbanel

## Women's Softball

The spring sports were not to be outdone. Michelle Lamont's softball team tied for second in the SSC behind eventual national champion Florida Southern. It marked the second consecutive year that Lamont had guided the Spartans to the league runner-up position. Her team won a school record 28 victories and appeared in a Top 20 poll at No. 17 for the first time in school history. Shannon Abarbanel was named conference co-MVP and voted the University's Most Outstanding Female Athlete for establishing several school softball records.

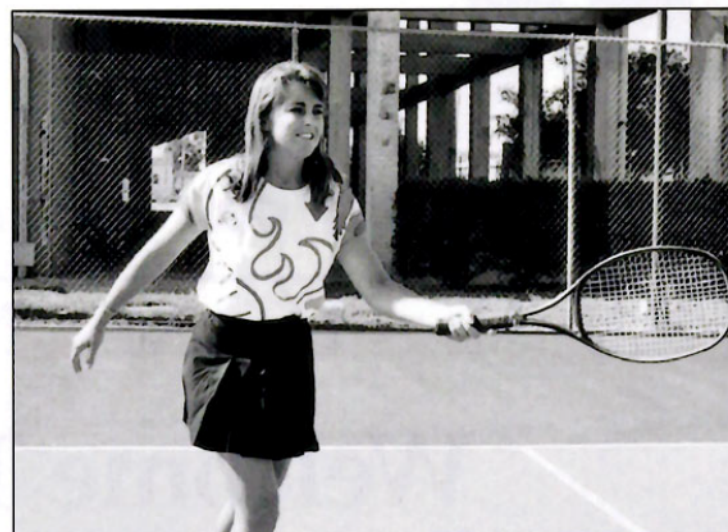
## Crew

The rowing team, with Bill Dunlap at the helm, had three crews advance to the Dad Vail Regatta (small school national meet), which was Tampa's best showing in five years. Two men's boats placed fourth and a women's boat was sixth.



## Tennis

Third-year coach Gregg Gruhl has the Spartan tennis program rising from the ashes. In years past, single victories were few and far between, but the netters continue to develop, highlighted by a 9-4 dual record for women, led by Linda Cassella who placed second in the SSC among No. 1 singles and was ranked No. 25 among individuals in the NCAA. Cassella earned all-conference honors in both tennis and cross country. The men were 4-11 in dual matches and fifth in the conference tourney.



Linda Cassella

ship trophies for both men and women. Additionally, Tampa placed 28 student athletes on the Commissioner's Academic Honor Roll to lead the Conference.

## Golf

The golf team, under first-year head coach Rick Christie, placed fourth in the SSC and has a number of good young players returning.

## Men's Baseball

Prado and his bunch brought it all home with the NCAA championship trophy in early June. Rodd Kelley was named SSC and South Region Player of the Year, All-American and selected as UT's Outstanding Male Athlete. David Dion was Region Tourney and Championship Series MVP. Prado's comment following the championship game summarizes the attitude of the entire athletic staff.

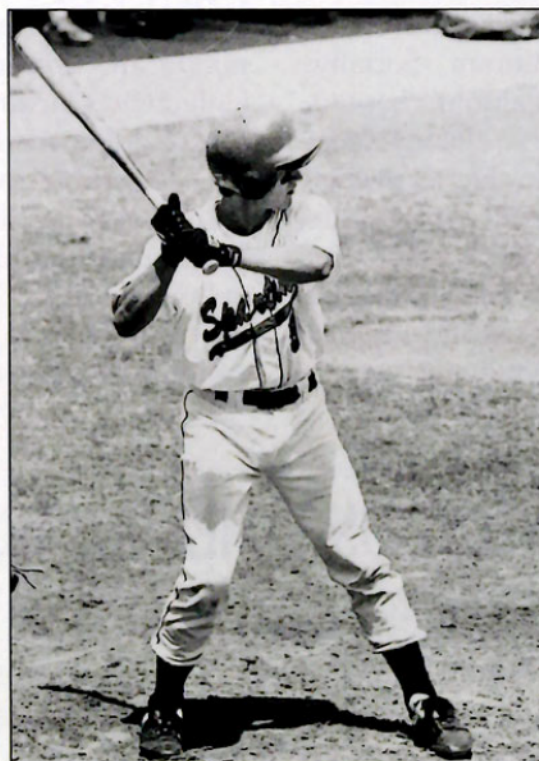
"It's difficult to repeat a national championship, but next year we'll be going for a third."

The University of Tampa athletic program, under the direction of Hindman Wall, earned the Sunshine State Conference all-sports champion-

## Boosters

The Sword & Shield Club, scholarship fund raising arm of Spartan athletics, enjoyed its most productive year as well with membership in excess of 150 patrons that led to exceeding the fund goal for the first time in years while completing the \$130,000 baseball stadium lights campaign. Attendance increased in every revenue-producing sport over the previous year.

Can it get any better than this? Ask a Spartan and you'll hear a resounding "Yes, it can!" On behalf of the 250-plus student athletes at The University of Tampa, you're invited to come and see your teams in action in '93-94. No matter what the sport, chances are high that you'll see a victory. **UT**



Rodd Kelley

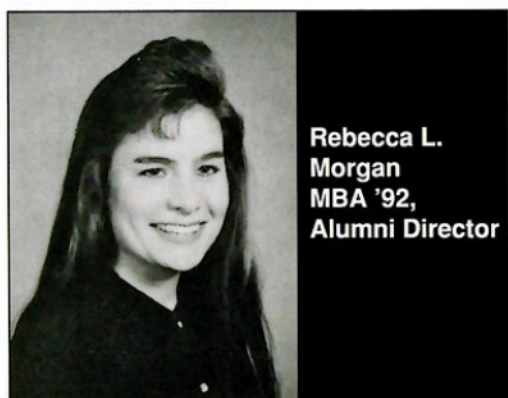


# Muezzin



A L U M N I N E W S

## Welcome To New Alumni



In deciding how to welcome the University's recent graduates to their alumni association, I realized all I had to do was look in our own backyard for inspiration. While we may not have 100,000 screaming fans at a football game, The University of Tampa has countless redeemable attributes and resources.

We must be forever mindful of the benefits of being UT alumni. Socially, we have many thriving alumni chapters throughout the country. In my most recent visits as liaison to chapter events, I have met people from all walks of life connected by the common bond shared as UT grads. Chapters are continually seeking the strength, ideas and support of new members. What better way to make new friends and contacts.

Professionally, UT offers many channels for personal growth. The Centers for Ethics, Leadership and Quality afford us the tools that are vitally important to operating a successful, well-managed business. The goal of these centers is to develop our University community into more efficient, productive and knowledgeable business leaders. At

our fingertips we have the library, the career center, and the small business development center to help us enhance existing careers or find new ones. Continuing our education through graduate programs, obtaining a second major, or simply auditing a class, broadens our minds and freshens our ideas. The University's faculty can be a wonderful source of knowledge and experience.

The Alumni Association supplies you with quality affinity products which contribute to alumni scholarships, travel opportunities at a discount, and a mark down at the bookstore. We can assist you in contacting old acquaintances, as

well as provide volunteer organizations for you to support your alma mater. Our primary goal is to provide our alumni with opportunities to socialize, advance

themselves professionally, and contribute to their university through donation, time, or participation.

The University and the Alumni Association welcome your attendance at

*"The University of Tampa has countless redeemable attributes and resource.s."*

— Rebecca L. Morgan

social functions and your utilization of these resources. The *Journal* is the publication dedicated to you for the purpose of communicating alumni events, keeping you in touch with other alumni, and reminding you of the excitement that continues on this campus.

On pages 10-12 of this issue you will see the events planned for fall Homecoming 1993. I urge you to join us, not only to enjoy yourself, but also to rededicate yourself to the University and your alumni association.

We as UT alumni are joined by the experiences that bind us together, working together, and growing together. The Alumni Association must see more of our visions turn into reality. Therefore, tap into all the resources this university has to offer. We should be proud of our education, this institution, and our status as UT alumni.

So, to the May '93 class, we wish you much success and a great big welcome to the UT Alumni Association. Our most valuable resource is you. **UT**



### ATTENTION TAMPA BAY AREA ALUMNI

Tampa Alpha, your local alumni chapter, is in search of a few interested people willing to share their time and valuable input on their Board of Directors. If you are interested in helping UT prosper and meeting other UT alumni, contact the Office of Alumni Relations at 813-253-6268.



# C L A S S N O T E S

**'62**

**Tina Sichel Morbitzer** is president of Morbitzer Group, Inc. a shopping center management and leasing firm. She and her husband, Tom, live in the Orlando, FL area.

**'70**

**Chris Miller**, after a 20 year television career in writing and producing, opened a new dimension floral gallery in Tampa's Hyde Park, Encore Florist.

**'74**

**David Hyde and Eileen Murphy** announce the birth of their son, Daniel Charles Thomas Hyde, in July and live in Germantown, MD. Daniel is the grandson of Charles and May Hyde. Processor Charles Hyde retired from UT in 1985.

**Cesar Ulloa**, a professional opera singer, is performing with opera companies throughout the U.S. and Europe. Debuts were at the Kennedy Center in Washington and with Zubin Mehta in Israel.

**'76**

**Philip Bragg** is employed at Teledyne Brown Engineering and lives with his wife, Terry, in Huntsville, AL.

**'77**

**Julie Bodmer Edwards** is a Corporal at the Hillsborough County Sheriff's Office in Tampa in the Professional Standards/Internal Affairs Section.

**'79**

**Patrick Simon**, Major in the U.S. Army, his wife, Lil, and children have moved to Weisbaden, Germany.

**'82**

**Shannon Brown Calahan** gave birth to Rebekah Lynn Calahan in Castro Valley, CA. Shannon has been promoted to Major in the Army Reserve. She and her husband, Phil, own an international marketing business and reside with their daughter, Joanna, in San Leandro, CA.

**'85**

**Danna Johansen and Kathy Oldford Johansen '86** announce the birth of their son, Merrick, born in March and are living in the Cincinnati, OH area.

**Dawn E. Clark** has been appointed editor of "USF Magazine" for the University of South Florida. She has also been accepted into the graduate program of USF's School of Mass Com-

munications, under the Division of Library and Information Science.

**'86**

**Chantelle Hernandez-Groene** and her husband, Brian, announce the birth of Nicholas Brian in May. Chantelle is manager at David Hernandez Financial Services in Tampa, FL.

**Peter Matthew Flanagan** is an Advanced Systems Engineer for EDS. Peter, his wife Deanna, and son, Michael Patrick, born in February, live in Plano, TX.

**'87**

**Jeffrey Fagler and Anne-Marie Nanai '92** were married in December 1992 and live in Tampa. Anne-Marie is an administrative assistant at WTVT, Channel 13, to Meteorologist Roy Leep.

**Timothy Mahek**, Captain in the Army Dental Corps, will marry B. J. Billo in September. Tim is serving in Wurzburg, Germany until December '94.

**Athena Koulizakis** received her MBA in December '92 from George Mason University and is working as a medical clinic manager at Central Physiotherapy Clinic in McLean, VA.

**Fiona McLatchie DeBartolo** and her husband, Thomas, announce the birth of their daughter, Nicole Christian, in July. Fiona received her masters degree in Educational Psychology in May.

*Continued on Page 8 . . .*



Thirty-five members of the Washington, DC area alumni chapter took part in a cruise on the Potomac River in August. Some of the participants were: from left Rob Manix, Alex Petrie, Jacques Leville, Stacey Solovey, and Rob Kaplan.



# C L A S S N O T E S

'88

**Katherine M. Smith** died in July. She was an investigator for the IRS, past president of Delta Zeta Sorority and will be greatly missed by her friends and family.

**Judith Ristow**, a business teacher for the public school system in Arlington, VA, was awarded the 1992/93 Teacher-of-the-Year Sallie Mae First Year Teacher Award.

**Bruce Wankoff** announced his engagement to Sharon Bryant and a May '94 wedding is planned.

'89

**Rob Tonnesen** and Cathy Ann Davis were married in May. **David Stansel '90** served as best man. They honeymooned in the West Indies and have purchased a farm in Hope, NJ to raise honey bees and tap maple trees for syrup.

**Lorraine Rafter** and Jonathan Graybill were married in June. The wedding party included **Margo Comport '90**, **Christine Doege '89**, **Lori Schneider '90** and **Barbara Vallin '90**. Lorraine is executive officer of her

reserve unit, the 441st Personal Service Company, and is with the Prudential Asset Management Company as Human Resources administrator.

'90

**Andrea Anthony** will marry Jerry Hart in February '94. Andrea works for the State of Florida as Environmental Health Specialist and Jerry is a Computer Aid Drafting and Design Specialist for Florida United Engineers.

**Michael Huet** and Shea Sutton were married in May

and live in Tampa. **Richard Bore '90** was in the wedding party.

**Vicki Robey** and Jack Werremeyer were married in June and live in Tampa. Vicki received her Masters in Social Work from the University of South Florida and is working as Director of Social Services at Manor Care.

**Linda Register** is a Psych/Mental Health Clinical Specialist for the VA Out-patient Clinic in Ft. Lauderdale, FL. She has received a nomination from the Florida Nurses' Association Nominating Committee as state delegate.

**James Beckman** and Maria Senediak were married in May and after graduating from Ohio State University, are working for law firms in Columbus, OH. **Jerry Flynn '90** and **Peter Platteborze '90** were groomsmen.

## SEEKING A FEW GOOD WOMEN AND MEN

UT is in search of candidates for alumni feature stories. Many of you have achieved great personal success since leaving your alma mater. Share your story with your fellow alumni. To nominate an alumni for a profile,

submit his/her name, graduation year and some highlights of the person's life to Rebecca Morgan, director of alumni and parent relations: The University of Tampa, Box H, 401 W. Kennedy Blvd., Tampa, FL, 33606.

Use this form to notify the Alumni Relations Office of your change of address.

## ALUMNI

Alumni Relations Office • Box H  
The University of Tampa  
Tampa, FL 33606-1490

Name \_\_\_\_\_ Class Year \_\_\_\_\_

Social Security No. \_\_\_\_\_ (To verify records only)

Company Name \_\_\_\_\_

Address \_\_\_\_\_

Home Telephone \_\_\_\_\_

Work Telephone \_\_\_\_\_

Occupation \_\_\_\_\_

Spouses's Name \_\_\_\_\_ UT Class Year \_\_\_\_\_

Please change my/our address on your records. (Please include mailing label.)

Old Address \_\_\_\_\_

New Address \_\_\_\_\_

The University of Tampa is vitally interested in the progress of its alumni. Use this form to keep the Alumni Relations Office informed.

Addition to family \_\_\_\_\_ Child's Name \_\_\_\_\_ Birth Date \_\_\_\_\_

Additional news for Class Notes \_\_\_\_\_

'92

**Robert Kaplan** will be attending The Roger Williams University School of Law and is still dating Stacey Solovey '93.

**Mark D. Tibbs** is completing his graduate studies at the University of Maryland while working at the Pentagon and living in Alexandria, VA.

'93

**Stacey Solovey** will be attending Marymount University in the fall studying fashion.



# UT Alumni Directory Coming Soon

The University of Tampa Alumni Directory project is nearing completion and soon shipment of the directories will begin.

This comprehensive new volume is a compilation of the most current data available on more than 15,738 University of Tampa alumni. The information has been obtained from questionnaire mailings, telephone research and/or from alumna/i records. Now that the editing, proofreading and printing are almost finished, the distribution of this impressive edition will begin.

Directories will be released in September. Please allow two to four

weeks for delivery. For alumni who reserved a copy of the directory during the verification phase of the project and have a question on their order, or if you wish to place and order, please contact the publisher directly:

Customer Service Department  
Bernard C. Harris Publishing Co., Inc.  
3 Barker Avenue • White Plains, NY 10601  
Phone (800) 877-6554

Our new directory is an excellent way of reliving your school days and getting reacquainted with former UT classmates. To those who returned their questionnaires – many thanks for your cooperation. And, to those who ordered a copy of the directory – enjoy! **UT**

## ATTENTION ALL GRADUATES OF UT'S DEPARTMENT OF EDUCATION

Those alumni who established credential files to be sent to employers and/or graduate schools should be aware that files will be kept for five more years and will then be destroyed. On June 1, 1998, all credential files dated 1993 or earlier will be eliminated. This change is in keeping with our new policy of retaining these files for a maximum of five years. If you have any questions, please call the UT Personal and Career Development Center at (813) 253-6218.

"...see a world in a grain of sand..."  
—William Blake

## Tampa Review

ART • POETRY • FICTION  
ESSAYS • TRANSLATIONS • CONVERSATIONS  
FROM FLORIDA AND THE WORLD

Lee K. Abbott • Stephen Dunn • Sara Maitland  
Dionisio D. Martinez • Peter Meinke • Rosalind Belben  
Robert Stackhouse • Philip Salom • Tom Disch  
Elizabeth Jolley • Silvia Curbelo • Amy Hempel  
Maciej Swiercocki • Ron Carlson • Duane Michals  
Elizabeth Spencer • Dmitri Prigov • Denise Levertov  
Kelly Cherry • Shirley Geok-lin Lim • Joseph Duemer  
Tess Gallagher • Adrian Popescu • Alane Rollings



### ORDER FORM

#### Tampa Review

Two issues annually: \$10. Single Copy: \$5.95.  
(Add \$3 for mailing outside U.S.)

☐ Please send me the current issue of *Tampa Review* for \$5.95.  
☐ Please enter my subscription for the next year for \$10.

Name: \_\_\_\_\_

Address: \_\_\_\_\_

City: \_\_\_\_\_ State: \_\_\_\_\_ Zip: \_\_\_\_\_

Please make your check payable to "Tampa Review" and return your order to:  
*Tampa Review* • Box 19F • The University of Tampa  
401 W. Kennedy Blvd. • Tampa, FL 33606-1490 USA

## ORDER THE 1994 MOROCCAN THE UNIVERSITY OF TAMPA'S YEARBOOK

The events and people in a student's life create memories that are special. The yearbook captures and preserves these unique times. The purchase of a 1994 *Moroccan* would be the ideal way to ensure that such an important record of college life is not lost.

The cost of the 240-page 1994 *Moroccan* is only \$18. The support of parents, alumni and students is very important for us to improve the quality of our book. With more pages, extended coverage and an increased amount of color, this 59th volume of the *Moroccan* promises to be an exceptional endeavor.

The 1994 *Moroccan* will include sections on student life, people, sports, Greeks, organizations, etc.

We can either deliver the book to your student or mail it directly to you when it arrives in April 1994.

### ORDER FORM

(Please print)

Name \_\_\_\_\_

Address \_\_\_\_\_

City \_\_\_\_\_ State \_\_\_\_\_ Zip \_\_\_\_\_

Student's Name \_\_\_\_\_

Class: ☐ FR ☐ SO ☐ JR ☐ SR Dorm/Room # \_\_\_\_\_

☐ Please deliver the *Moroccan* to my student. (\$18)

☐ Please mail the *Moroccan* directly to me. (\$20)

☐ Please send me information about 1994 advertising rates.

Return this form, with your check payable to the *Moroccan*, to:  
Evan Fetter – *Moroccan* Editor • Box 2756 • The University of Tampa  
401 W. Kennedy Blvd. • Tampa, FL 33606-1490



## THE UNIVERSITY OF TAMPA NATIONAL ALUMNI ASSOCIATION PRESENTS

**"BRINGING BACK THE FIFTIES"****ALUMNI  
HOMECOMING****1993  
SCHEDULE OF EVENTS  
OCTOBER 21-24****THURSDAY,  
OCTOBER 21**

5:15 to 6:30 p.m.

**Trustees Conference Room  
ANNUAL NATIONAL  
ALUMNI ASSOCIATION  
MEETING**

The National Board of Directors will meet in its annual meeting to finalize all programs for the Homecoming weekend. The 93-94 calendar of events will also be on the agenda. All general members of the association are welcome.

7 p.m.

**The Home of David  
and Marilyn Ruffer****NATIONAL ALUMNI  
ASSOCIATION DINNER**

All alumni and spouses can enjoy a

wonderful meal while having the chance to meet UT's president, his wife, and the National Alumni Board. Get reacquainted with fellow alumni and kickoff the weekend with a fabulous party!



9 a.m. to 7 p.m.

**Plant Hall Lobby****ALUMNI  
CHECK-IN AND  
HOSPITALITY  
CENTER**

Receive your Homecoming Weekend registration packet filled with tickets, schedules, and goodies. Refreshments will be served.

10 a.m.

**Babe Zaharias Golf Course****ALUMNI GOLF OUTING**

Get together with the old gang and play an informal round of golf. No matter what your handicap, we can assure you a good time!

10 a.m. to 4 p.m.

**Henry B. Plant Museum****MUSEUM TOURS**

Let the staff of the H. B. Plant Museum take you back in time to the Tampa Bay Hotel and its history. View some of the old treasures that have been preserved all these years. A small donation is requested for the tour.

11:30 a.m. to 1:30 p.m.

**Plant Hall Fletcher Lounge****GOLDEN SPARTAN  
REUNION LUNCHEON**

The classes of 1933-43 reunite to socialize over lunch. Come see how the old library has changed. Attendance by invitation. Due to this being the second homecoming for 1993, new members will be inducted in the spring of '94.

2 to 3 p.m.

**Plant Hall Lobby****MINARET CLIMB**

View the city from its best known landmark, the Minarets of Plant Hall. Be sure to wear flat shoes and bring your camera to capture the breathtaking view.

6 to 6:30 p.m.

**Plant Hall Fletcher Lounge****DEPARTMENTAL  
RECEPTIONS**

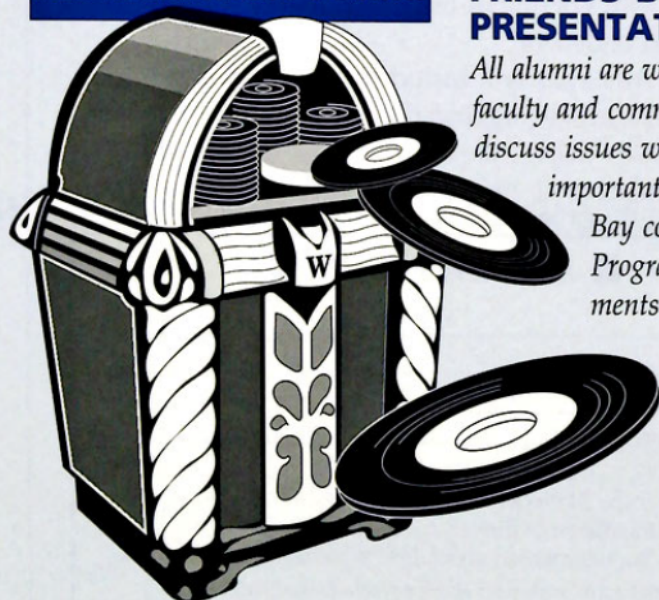
Reacquaint yourself with your old classmates and some of the old and new faculty. Mingle with those who were in your major and make your plans for the rest of the weekend.

6:45 to 7:15 p.m.

**Plant Hall Ballroom****PRESIDENT'S  
RECEPTION**

This annual reception for alumni, faculty and staff enables everyone to speak with David Ruffer, the University's president. Everyone is encouraged to join him as he discusses the 1993-94 school year and listens to your suggestions.

**SEE PAGE 12  
FOR ALUMNI  
HOMECOMING 1993  
REGISTRATION FORM.**

**FRIDAY,  
OCTOBER 22**

7:30 to 8:45 a.m.

**Plant Hall Ballroom****ALUMNI AND  
FRIENDS BREAKFAST  
PRESENTATION**

All alumni are welcome to hear faculty and community members discuss issues which are important to the Tampa Bay community. Program announcements and additional information will be distributed.



# H O M E C O M I N G S E C T I O N

7:30 to 9 p.m.

Pool Side

## **SOCKHOP SPLASH: "BRINGING BACK THE FIFTIES"**

A celebration of our university and the classes of the 50's. All alumni are invited as we go back in time to enjoy ourselves with some old fashioned fun! It's your party rain or shine. Dress casual or with a 50's theme.

9 p.m.

Plant Park

## **STUDENT LAWN DISPLAY JUDGING**

All day Friday student organizations will be adding the final touches to their displays depicting a designated Homecoming theme. All displays must be completed by 9 p.m. Final judging will occur after the Sockhop Splash. Alumni will cast their official ballot to be announced at the student dance the next evening.

9:15 p.m. to Midnight

The Rathskeller Pub

## **ALUMNI NIGHT IN THE RAT**

UT's old watering hole comes back to life as alumni gather to tell of their glory days as they enjoy tunes from yesterday and today. It could be a night you'll never forget! Door cover charge is \$2.

## **SATURDAY, OCTOBER 23**

10:15 to 11 a.m.

Plant Hall Classrooms 220 and 225

## **ALUMNI GO BACK TO SCHOOL**

Two seminars will be offered to all alumni on various topics pertinent

to our lives today. Faculty at UT will be speaking on a variety of issues that you do not want to miss. Topics to be announced.

11 a.m. to 1 p.m.

Plant Park

## **ALUMNI PICNIC IN THE PARK**

Bring your family to enjoy good food and lots of fun! Our Spartan athletes will be present to exhibit their talents. Various sporting events will be available for alumni throughout the afternoon.

1:15 to 2 p.m.

Plant Hall Classrooms 220 and 225

## **ALUMNI GO BACK TO SCHOOL**

Two seminars will be offered in the afternoon to all interested alumni. Hear distinguished faculty and community leaders discuss hot topics in the 90's. Topics to be announced.

2 to 3 p.m.

Plant Hall Lobby

## **MINARET CLIMB**

In case you missed Friday's opportunity, you don't want to miss your last chance to climb one of these famous architectural beauties! Bring your camera, wear flat shoes, and get ready for some breathtaking views of our city.

4 p.m.

Pepin Rood Stadium

## **INTRAMURAL FLAG FOOTBALL PLAYOFF GAME**

The excitement of intramural football is something you must experience. You will be amazed

how intense and thrilling this game is going to be. The hotdog stand is open and your seat is reserved!

7 p.m.

Plant Hall Fletcher Lounge

## **UT ALUMNI LAS VEGAS NIGHT**

This is a raffle and fund raiser to benefit the UT Scholarship Fund. This spectacular event is consistently successful, drawing one of the largest crowds of all alumni events. There will be a grand prize awarded at the end of the evening. The anticipation builds all night long as to who the lucky winner will be! A delicious buffet dinner and cocktails will be served.

Midnight

Chatterbox Lounge

## **LATE NIGHT AT THE CHATTERBOX**

Finish off the night the traditional UT way and come to "The Box". Your weekend just wouldn't be complete without it!

## **SUNDAY, OCTOBER 24**

11 a.m.

Hillsborough Community College Campus

## **PRE-GAME TAILGATE PARTY**

A picnic lunch and refreshments will be served to all who attend the Bucs game. Season ticket holders are welcome to attend.

1 p.m.

Tampa Stadium

## **TAMPA BAY BUCCANEERS VS. GREEN BAY PACKERS**

Bring your family and join the alumni association as we cheer our Tampa Bay Bucs on to victory. The Packer Backers is a crazy

group, so wear your orange and come support the home team!

Tickets available by request.



## **HOTEL & TRAVEL INFORMATION**

### **Hotel Information:**

Hyatt Regency Downtown Tampa  
(813) 225-1234  
(800) 233-1234  
ID Code: UT Homecoming  
\$72/night

### **Travel Arrangements:**

AAA Travel Service  
(813) 289-1483  
(800) 768-8735  
Contact: Cheryl Bush  
ID Code: UT Homecoming

### **Auto Rental Arrangements:**

Payless Car Rental  
(813) 289-6554  
ID Code: UT Homecoming



# H O M E C O M I N G S E C T I O N

## ALUMNI HOMECOMING 1993 REGISTRATION FORM

MAIL TO: Office of Alumni Relations • Box H • The University of Tampa • 401 W. Kennedy Blvd. • Tampa, FL 33606-1490

Name/Guest's Name \_\_\_\_\_

Class Year \_\_\_\_\_ Major \_\_\_\_\_

Address \_\_\_\_\_ City \_\_\_\_\_ State \_\_\_\_\_ Zip \_\_\_\_\_

Home Phone (\_\_\_\_\_) \_\_\_\_\_ Work Phone (\_\_\_\_\_) \_\_\_\_\_

**QUESTIONS?  
CALL THE OFFICE OF  
ALUMNI RELATIONS  
AT (813) 253-6268.**

**IMPORTANT:** Please indicate below the activities you plan to attend and enclose a check for the appropriate amount. Tickets can be picked up at the Office of Alumni Relations (Room 202, Plant Hall) or at Alumni Check-in on Friday, Oct. 22.

EVENT	COST PER PERSON	NO. OF PEOPLE	TOTAL
Annual National Alumni Association Meeting	Free		
National Alumni Association Dinner	Free		
Alumni and Friends Breakfast Presentation	\$5 per person		
Alumni Golf Outing	\$15 per golfer (includes cart)		
Golden Spartan Reunion Luncheon	By invitation		
Departmental Reception (Please indicate major above)	Free		
President's Homecoming Reception	Free		
Sockhop Splash: "Bringing Back the Fifties"	\$12 per person		
Alumni Picnic in the Park	\$6 per person Free for children under 12		
UT Alumni Las Vegas Night	\$50 per couple (includes dinner, drinks and gaming tables) \$100 per couple (includes dinner, drinks, gaming tables and jackpot entry)		
Pre-game Tailgate Party	\$10 per person		
Tampa Bay Buccaneers vs. Green Bay Packers	\$18 and \$25 are available		
<b>YOU MAY TAKE 10% OFF YOUR TOTAL COST IF WE RECEIVE YOUR REGISTRATION FORM AND CHECK BEFORE OCT. 9.</b>		<b>TOTAL AMOUNT ENCLOSED</b> (Please make checks payable to UT Alumni Association)	



# C O N T R I B U T O R S

**T**he University of Tampa recognizes through this listing, and those that follow, the invaluable contributions of individuals, corporations, organizations and foundations to the concept and importance of private liberal-arts education. Without this steadfast and loyal commitment from the community during the

1992-93 fund-raising year, the University could not continue to grow and prosper.

Donors named in the following lists contributed to The University of Tampa during the period of June 1, 1992 through May 31, 1993. Matching gifts received after that date will be credited to the fiscal year 1993-94.

Every attempt has been made to ensure the accuracy and completeness of these lists. However, error is possible and omissions sometimes occur. We apologize for any errors and/or omissions. Please contact the Office of Development and University Relations at (813) 253-6220 to inform us of any inaccuracies.

## 1992-93 PRESIDENT'S COUNCIL

**The President's Council is the most esteemed gift society of  
The University of Tampa, honoring annual donors of \$10,000 or more.**

Barnett Bank of Tampa, N.A./Mr.

James W. Ivey

Borrell, Inc.

The Chiselers, Inc.

Conn Memorial Foundation, Inc.

First Union National Bank/Mr.

Thomas H. Pacer

Florida Independent College Fund

Frank Stanley Beveridge Foundation

GTE Foundation

Mr. and Mrs. John L. Harrell

Mr. Max H. Hollingsworth

Humana Health Care Plans

Mr. and Mrs. Robert A. Jaeb

Kimmins Environmental Service

Corporation

Mr. and Mrs. William C. Mangan

Merchants Association of Florida, Inc./

Mr. and Mrs. Richard C. Swirbul

NationsBank/Mr. R. Eugene Taylor

Anonymous

Mr. and Mrs. Paul T. and Rita M. Nolan

Mr. and Mrs. Angel Oliva, Sr.

Mr. and Mrs. J. Ross Parker

Pepsi-Cola Bottling Company - South

Polish Heritage Foundation

The Saunders Foundation

Sun Bank of Tampa Bay/Mr. George

W. Koehn

TECO Energy, Inc.

Tampa Greyhound Track

The Tampa Tribune

Mr. and Mrs. Rick and Sandy Thomas

Anonymous

The University of Tampa Class of 1993

Mr. James W. Walter/The Walter

Foundation

W.R.B. Enterprises, Inc./Mr. G. Robert

Blanchard

## 1992-93 MINARET SOCIETY

**Named in honor of the minarets atop H.B. Plant Hall, the Minaret Society recognizes alumni and friends who annually contribute between \$1,000 and \$9,999 to The University of Tampa.**

**Donors to athletics are members of Sword & Shield.**

### GOLD CRESCENT MEMBERS

**(\$5,000-\$9,999)**

Mr. Girard F. Anderson

Citibank

A. D. Davis Family/Winn-Dixie Stores  
Foundation

J. E. Davis/Winn-Dixie Stores  
Foundation

First Florida Bank, N.A.

Hillsborough Education Foundation

Hillsborough River Realty Corp./

Mr. John J. Avlon

George W. Jenkins Foundation, Inc.-

George W. Jenkins, Founder of Publix

Jones Intercable, Inc.

Mr. Robert T. Jones

Pinellas County Education Foundation

Mr. and Mrs. William Roth

William G. and Marie Selby Foundation

Mr. William L. and Elvira Stoeltzing, Sr.

### SILVER CRESCENT MEMBERS

**(\$1,000-\$4,999)**

Mrs. Rebecca L. Abdoney

ARA Services

Mr. Thomas D. Arthur/Havatampa Inc.

Mr. and Mrs. Alfred S. Austin

Mr. Lawrence J. Babbitt

Mr. and Mrs. L. Lowry Baldwin

The Bank Of Tampa

Banyan Foundation/Mr. and Mrs.

Reese Coppage

Mr. Richard E. Benson

Best Termite & Pest Control

Mr. William B. Blackburn

Mr. William D. Blizzard, Jr.

Mr. Lee Borowsky

Mr. and Mrs. David E. Bussone

Mr. and Mrs. Scott and Linda Buttrey

Caliana Foundation

Mr. and Mrs. Bruce and Liz Carp

*Continued on Page 14 . . .*



# C O N T R I B U T O R S

## 1992-93 MINARET SOCIETY

*Continued from Page 13*

Mr. and Mrs. John B. Caswell  
Cellular One  
Mr. Frank G. Cisneros/Marman  
U.S.A., Inc.  
Mr. and Mrs. Joe and Terrell Clark  
Mr. Robert W. Cook  
Mr. and Mrs. Thomas A. Cooper  
Coopers and Lybrand/Mr. James H.  
Maxwell, Jr.  
Mr. and Mrs. Thomas G. Creed  
Ms. Pandit F. Crite  
Critikon, Inc.  
Mr. and Mrs. William M. Crosby  
Mr. and Mrs. Jeffrey M. Davidson  
Mr. and Mrs. Charles M. Davis, Jr.  
Mr. and Mrs. Sam F. and Helen Davis  
Mr. and Mrs. David W. and Linda  
Devine  
Mr. and Mrs. Robert H. Dewey III  
Dr. and Mrs. Stephen F. and Marsha  
Dickey  
Mr. Jerry D. Dingle  
Mr. and Mrs. Richard J. Dobkin  
Mr. and Mrs. Daniel M. Doyle  
Dr. and Mrs. Garth R. Drewry  
Frank E. Duckwall Foundation  
Mr. David L. Dunkel  
Mr. and Mrs. William F. Ebsary  
Mr. Gerald W. Eppley  
Ms. Pamela S. Erb  
Mr. and Mrs. Hilliard M. Eure III  
Estate of Mr. Walter R. Faires  
Mr. and Mrs. Bob and Vicki Fales  
Mr. and Mrs. James L. Ferman, Jr.  
Mr. and Mrs. James L. Ferman, Sr.  
Mr. and Mrs. Peter Fingar  
Anonymous  
The Free Press Publishing Company/  
Mr. John N. Harrison III

Ms. Virginia Wilson Galagan  
Mr. and Mrs. John F. Germany  
Mr. Leonard H. Gilbert/Carlton, Fields,  
Emmanuel, Smith & Cutler, P.A.  
Mr. and Mrs. William A. Gillen  
Mrs. Grace G. Giunta  
Greater Tampa Chamber of Commerce  
Mr. Richard Gonzmart  
Mr. and Mrs. Randall F. Greene  
Mrs. G. R. Griffin  
Mr. and Mrs. Daniel T. and Barbara  
Gura  
Ms. Margaret B. Haight/GTE Telephone  
Operations - South Area  
Mr. Thomas Hall  
Mr. C. S. "Stan" Harrell/Pharmacy  
Management Services, Inc.  
Mr. H. Doyle Harvill  
Mr. Robert A. Hays, Jr.  
Mr. and Mrs. Syd N. Heaton  
Dr. and Mrs. Thomas J. and Louisa  
Ivanova Hegarty  
Mr. Aaron W. Hendry  
Hill-Donnelly Corporation/Lee H.  
Hill III  
Mr. Harry M. Hobbs  
Mrs. Margaret D. Hobbs  
Mr. and Mrs. Vincent A. Hoover  
Col. and Mrs. Joseph W. House  
Mr. and Mrs. Jack L. Huss/Briggs  
Industries, Inc.  
Mr. Kenneth E. Hyatt  
Dr. George F. Jackson III  
Mr. and Mrs. Floyd P. Juster  
Kash N' Karry  
Mr. and Mrs. Erwin I. and Wendy Katz  
Mr. and Mrs. Perry O. Keene, Jr.  
Kris Douglas Kelley  
Mr. and Mrs. James M. Kelly  
Mrs. Elizabeth Kercher  
Mr. and Mrs. John W. Kercher III  
Mr. and Mrs. David C. G. Kerr  
Las Damas de Arte  
Mr. and Mrs. Fred D. Learey  
Mr. John P. Lowth III  
Macfarlane Ferguson  
Mr. Michael D. Malfitano  
Mr. and Mrs. Bert T. Martin, Jr.  
Dr. and Mrs. Alfred S. Massam  
Mr. J. Larry Massingill/The Elmer  
J. Krauss Organization

Mathews Corporation/Mr. and Mrs.  
Herman Oellerich  
Memorial Hospital of Tampa/  
Mr. Keith Henthorne  
Mr. R. David Miller  
Mr. Robert A. Monroe  
Mrs. Roxann W. Moore  
Walter P. Moore and Associates, Inc./  
Mr. Raymond F. Messer  
Mr. and Mrs. Harris H. Mullen  
Mr. Alan D. Oak/TECO Energy, Inc.  
Mr. and Mrs. John K. Olson  
Mr. Lester K. and Yetive Brooks Olson  
Oscar Mayer Foods Corporation  
Mr. and Mrs. Michael D. Osterhout  
Mrs. Lois W. Pauchey  
Henry Bradley Plant Memorial Fund  
Mr. Fred E. Pollock  
Mr. and Mrs. Marc and Donna  
Popovich  
Dr. and Mrs. Dennis F. Pupello  
Mrs. Margaret Reading Ragg  
Mr. and Mrs. Neil Rauenhorst  
Raymond James Financial, Inc.  
Mr. and Mrs. William W. and Dorothy  
G. Read  
Mr. Lance Ringhaver  
Mr. and Mrs. Austin and Arline  
Rising/Austin Foundation, Inc.  
Mrs. Carmen E. Rodriguez  
Mr. and Mrs. Jack and Judy Rodriguez  
Dr. and Mrs. David G. Ruffer  
Mrs. Shirley A. Ryals  
Ms. Ann V. Sahlman  
Salomon Brothers Inc.  
Mr. and Mrs. Bruce A. and Adajean  
Samson  
Mr. and Mrs. Robert E. Scott  
Mr. and Mrs. Ernest C. and Connie  
F. Segundo  
Mr. and Mrs. T. Terrell and Neva  
Sessums  
Mr. and Mrs. Robert R. Sharp  
Mr. and Mrs. Mandell Shimberg  
Mr. and Mrs. Coleman J. and Carol  
J. Shirley  
Drs. Helene and Stuart Silverman  
Mr. L. Garry Smith, Jr.  
Stage Works, Inc.  
Mr. and Mrs. William E. Starkey  
Mr. and Mrs. Joseph T. Steuer  
Mr. Chris T. Sullivan  
Mr. Lanny Sumpter  
Mr. and Mrs. David M. Sykes  
Dr. William L. Taldone

## DUPLICATE MAILINGS

Please help us cut down on mailing costs. If your household is receiving more than one copy of the *Journal*, send us the address labels from each copy. We will review our records and correct any duplication.

Send your labels to: The University of Tampa, Office of Alumni Relations, Box H, 401 W. Kennedy Blvd., Tampa, FL 33606-1490.



# C O N T R I B U T O R S

Tampa Alpha Chapter/University of  
Tampa Alumni Association  
Tampa Bay Business Journal  
Tampa Bay Downs  
Tampa Jai-Alai  
Tampa New Auto Dealers Association/  
Mr. W. Scott Christopher and  
Mr. George O. Wilson III  
Mr. and Mrs. Zachary T. Tapp  
Mr. and Mrs. Theodore C. Taub

Mr. and Mrs. Thomas E. Taylor  
Mr. and Mrs. Jack and Ruth Turbeville  
Mrs. Kathryn Hill Turner  
UPS Foundation/FL Independent  
College Fund  
University of Tampa Board of Fellows  
University of Tampa Women's Club  
Mr. and Mrs. Thomas A. Valenti  
Dr. and Mrs. Ronald L. Vaughn  
Mrs. Sylvia Corral Vega

Mr. and Mrs. Theodore E. and Mary  
Wade  
Mr. and Mrs. James W. and Celeste  
Whitehead  
Mr. and Mrs. Michael Winner  
World Trade Center Tampa Bay/Mr.  
John C. Beddow  
Ms. Barbara M. Yadley  
Mr. and Mrs. Alvin P. and Mary Ann  
Yorkunas  
Ms. Gwynne A. Young

## 1992-93 FREDERIC SPAULDING SOCIETY

**Named for the founding president of the University, the Frederic Spaulding Society recognizes those alumni and friends who annually contribute between \$100 and \$999.**

### FREDERIC SPAULDING SOCIETY GOLD (\$500 - \$999)

Ms. Christine Klopfer Angel  
Mr. Paul W. Allaert  
Bay Golf Cart  
Dr. Earl W. Boatwright, Jr.  
Ms. Ann I. Borrowdale  
Mr. and Mrs. William Brown  
Corporate Planning Group, Inc.  
Dr. and Mrs. Gordon W. Couturier  
Mrs. Olive K. Deal  
Dr. and Mrs. David M. Delo  
Mr. and Mrs. Gilbert and Loretta  
DeMeza  
Mr. and Mrs. Lani and Dao Elliott  
The Emergency Associates for Medicine  
Finerty Film  
First United Methodist Church  
Ms. Nancy T. Ford  
Ms. Elizabeth A. Gavula  
Dr. Curtis A. Gilgash  
Mr. and Mrs. Gerald W. Herzog  
IBM Corporation  
Mr. and Mrs. Jaime and Emma Illel  
Mr. and Mrs. James A. and Linda Ingram  
Mr. and Mrs. Albert J. and Skaye Kirk  
Mr. James H. Kynes  
Mr. Michael C. Lauder  
Lauren Film Productions  
Mrs. Molly Lawrence/Caspers Co.  
Dr. and Mrs. Burton N. Lowe  
Dr. and Mrs. Nicolas G. Maragos  
Ms. Elibeth A. Martin  
Mr. and Mrs. R. A. Minck  
Mr. and Mrs. O. William Moody  
Mr. and Mrs. Rick and Sheri Ogorek  
Dr. Terry M. Parssinen

Ms. Virginia M. Reaves  
Dr. and Mrs. William L. Rhey  
Mr. Stephen M. Richards  
Dr. Michael P. Sassaris  
Mr. Jerome A. Schine  
Mr. Michael L. Shea  
Mr. Frank S. Sinkwich  
Mr. James B. Strenski/Public  
Communications, Inc.  
Times Publishing Co.  
Mr. and Mrs. Larry and Jan Udell  
Mr. Anthony M. Van Ess  
Dr. John V. Whitbeck

### FREDERICK SPAULDING SOCIETY SILVER (\$250 - \$499)

Ms. Nancy Alchediak  
Dr. and Mrs. Braulio Alonso  
Anchor Glass Container Corp.  
Mr. Mark John Ball  
Mr. David Belcher  
Mr. John C. Bierley  
Dr. Robert Birrenkott  
Mr. Royce Brown  
Mr. J. Stewart Bryan III  
Mr. Robert A. Bunnell  
Ms. Mary Eleanor Cline  
Ms. Virginia M. Covington  
The Honorable and Mrs. Paul  
W. Danahy  
Mr. and Mrs. Max Denoff  
Mr. Gilmore A. Dominguez  
Mr. and Mrs. Andrew P. and Angela  
Dwork  
Mr. Craig R. Edwards  
Mrs. Julia Flom  
Mr. Fassil Gabremariam

Mr. and Mrs. Steven and Sara  
Goldberg  
Mr. Jerrold W. Gregory  
Mr. and Mrs. Richard B. Hadlow  
Mr. and Mrs. John W. and Mimi  
Hanna  
Mr. Philippe G. Hills  
Drs. Ronald and Dori Ingersoll  
Mr. and Mrs. Michael J. and Judy  
Kosiba  
Mr. Todd V. Larson  
Ms. Mallory Lykes  
Mr. John R. Madden  
Mr. George McLaughlin, Jr.  
Mr. James R. Mellaci  
Mr. and Mrs. Robert D. and Judith  
P. Mohr  
Neckermann Versand  
Mr. James P. O'Drobinak  
Mr. and Mrs. Michel Palein  
Mr. Michael R. Pender, Jr.  
Dr. and Mrs. Frank Pidala  
Mr. Andrew L. Pink  
Mr. Gilberto D. Prado  
Dr. George M. Puia  
Mr. Jerome D. Quinn  
Mr. Michael V. Roberts  
Dr. Nancy C. Ross  
Mr. Samuel C. Russell  
Ms. Linda S. Ryan  
Mr. Andrew J. Schroder III  
Mr. and Mrs. J. A. and K. Singer  
Mr. Joseph R. Smith  
Ms. Melodee M. Suarez  
Mr. J. Thomas Touchton

*Continued on Page 16 . . .*



# C O N T R I B U T O R S

Mr. and Mrs. Harry R. and Mary  
C. Sant Cruz Trout  
Mr. Glen Waddell  
Mr. David E. Ward, Sr.  
Mr. and Mrs. Ansley and Elaine  
R. Watson  
Mrs. Cyril M. Weissman  
Mr. Ted Williams  
Mrs. Jane C. Hall Witt  
Col. Harold W. Youmans

## FREDERIC SPAULDING SOCIETY BRONZE (\$100 - \$249)

Mr. and Mrs. Bruce W. Adams  
Dr. Michael K. Adams  
Mr. Sam Y. Allgood  
Mr. Leonard N. Altamura  
Mr. and Mrs. Martin Andersen  
Annis Mitchel Cockey et al  
Aquila Street Productions  
Mr. and Mrs. Charles E. August  
Mr. Gregg Bachman  
Mr. Douglas Bagge  
Mr. and Mrs. Sam and Cookie Bailey  
Ms. Jacqueline B. Baird  
Ms. Nancy J. Baird  
Mr. Richard A. Baldwin  
Mr. Andrew E. Balog  
Mr. Luis F. Barragan  
Mr. Bruce Barrett  
The Honorable Robert E. Beach  
Mr. and Mrs. David C. Beecroft  
Mr. and Mrs. Lee M. Bentley  
Mr. Howard P. Best, Jr.  
Dr. William Preston Billig  
Dr. Wade G. Birch  
Mrs. Karen E. Black  
Mr. Wallace W. Blackburn  
Mr. Russell M. Blain  
Mr. Arthur E. Blau  
Mr. Gerald Bobier  
Mr. Joseph Bonacci  
Dr. Tommy J. Borrell  
Mr. Robert A. Bourke  
Mrs. Connie Ohlman Bradish  
Mr. and Mrs. Edgar B. Bradley  
Ms. Beth Bronson  
Mr. Douglas K. Brooks  
Mr. Charles A. Brown  
Mr. and Mrs. Kevin E. and Renee  
Brown  
Mr. Larry W. Bryant  
Mr. William C. Buchanan  
Ms. Joan Griffin Burpee  
Mr. Robert A. Burwell  
Busch Gardens

## 1992-93 SPAULDING SOCIETY

*Continued from Page 15*

Mr. and Mrs. Kevin A. and Linda  
S. Cameron  
Mr. Edward S. Campbell III  
Mr. Gordon W. Campbell  
Dr. Xavier F. Cannella, Jr.  
Mr. and Mrs. Jay and Geri Card  
Mr. Colin A. Carter  
Mr. Michael C. Cartwright  
Cason Engineering Company  
Mr. Nelson D. Castellano  
Mr. and Mrs. F. Chris and Linda  
H. Catanach  
Mr. Joseph H. Chambers  
Mr. Paul S. Charpentier  
Mr. and Mrs. Jim R. and Glenda Clare  
Ms. Karen Clarke  
Mr. and Mrs. Gregory A. and Mary  
Cleotelis  
Mr. Bernard I. Cohen  
Mr. I. Michael Cohen  
Mr. Richard L. Cohen  
Mr. Jack T. Compton  
Mr. Norman D. Cramer  
Ms. Katherine D. Crase  
Ms. Cathy Crosby  
Mr. and Mrs. Donald and Elaine  
Crowley  
Mr. and Mrs. Thomas E. and Mary  
V. Cunningham, Jr.  
Mr. and Mrs. Barry W. and Melissa  
Curewitz  
Mr. Austin R. Curry  
Mr. Lawrence J. Cyment  
Dr. William W. Cyzewski  
Dr. Jan K. Dargel  
Mrs. Myrna De Jesus Flynn  
Mrs. Kathryn S. Denoff  
Ms. Kimberly F. DeShong  
Mr. and Mrs. Owen V. DeShong  
Mr. Alfred R. Dickey, Jr.  
Ms. Penelope F. Dickos  
Mr. Gerald DiFabrizio  
Mr. Mel DiPietro  
Mr. and Mrs. William and Lois K.  
Dmytryk  
Ms. Amy J. Doktor  
Ms. Rose Dominguez  
Mr. R. Grant Donaldson  
Mr. and Mrs. H. Hampton Dunn  
Drs. Paul B. and Sarah B. Edwards  
Mrs. Brenda V. Ellison

Mr. Larry L. Elliston  
Mr. Richard M. Enders  
Mrs. Elizabeth Holton Enlow  
Mr. David Epstein  
Ms. Dawn M. Eslick  
Ms. Cynthia D. Ezell  
Mr. J. Rex Farrior, Jr.  
Mr. Richard B. Faunce  
Dr. and Mrs. Martin Favata  
Dr. Randy M. Feldman  
Mr. Kenneth C. Ferlita  
Dr. James M. Fesmire  
Mrs. Margaret B. Finch-Arietta  
Mr. Howard A. Fineman  
Ms. Daisy Bowman Fisher  
Mr. and Mrs. Garry A. Flowers  
Mr. Dana T. Fogg  
Dr. David B. Ford  
Mr. Robert J. Fox  
Mr. Michael A. Freedman  
Maj. Rick Frysinger  
Mr. and Mrs. Wyckliffe Furcron and  
Jeanne Ryan  
Mr. and Mrs. George W. Gage III  
Ms. Christine B. Gagnon  
Mr. Marty J. Gall  
Dr. Luis Garcia  
Mrs. Robley Hunt Garrigan  
Mr. Robert P. Gelzheiser  
Mr. and Mrs. Peter L. Getzler  
Mr. John Giancola  
Ms. Louise Clayton Giargiari  
Mr. Gerald L. Gillis  
Mr. Kevin M. Gilhool  
Mrs. Kitty Anne Gilmer  
Mr. Sam Giunta  
Mrs. Dorothy Glover  
Mr. and Mrs. Jose I. and Margie  
Gonzalez  
Mr. Ralph L. Gonzalez  
Mrs. Marian Pedersen Goodbread  
Mr. and Mrs. John S. Goodson  
Mr. and Mrs. Ken and Jane Gordon  
Mr. Anthony V. Greco  
Mr. David A. Greif  
Mrs. A. J. Grimaldi  
Dr. and Mrs. Richard H. Gude  
Mrs. Louise Gunnoe  
Ms. Marilyn Menko Hamlin  
Mr. and Mrs. John M. Hammer  
Ms. Teresa Hanna  
Dr. Everett M. Harrison  
Mr. John W. Harvey  
Mr. Alan D. Harvill  
Mr. Richard Hatcher



# C O N T R I B U T O R S

Lt. Col. William F. Hawk  
 Mr. and Mrs. Calvin and Vicki Hayes  
 Mr. William C. Heithaus  
 Mr. Gerard J. Henkel  
 Dr. Lazaro A. Hernandez  
 Dr. and Mrs. Ernest W. Hetrick  
 Ms. Valerie Smith Hirvela  
 Mrs. Frances Sessions Hoffmann  
 Mr. Marvin L. Holloway  
 Mrs. Barbara A. Holmes  
 Mr. Steven W. Holub  
 Mr. John E. Horst  
 Mr. and Mrs. Daniel B. and Mary  
     H. Howell  
 Mr. and Mrs. George B. Howell  
 Mr. Walter R. Hudson  
 Mr. and Mrs. Prentice Hull  
 Dr. Truman Hunter  
 Mrs. Etelvina A. Hutchins  
 Dr. Robert B. Ilderton  
 Mr. L. N. Ingram, Jr.  
 Dr. David Clarke Isele  
 Mr. and Mrs. Gerald S. and Patricia  
     Jackson  
 Mr. Stewart D. Jackson  
 Dr. Michael G. Jeffries  
 Mr. S. Ross and Dr. Elaine Becker Jett  
 Mr. Edward A. Johnson  
 Mr. Hal R. Johnson  
 Ms. Virginia Rhines Jones  
 Dr. Gilbert W. Joseph  
 Ms. Frances E. Keating  
 Mr. Art Keeble  
 Mr. and Mrs. Richard C. Kelsey  
 Mr. Fred H. Kenfield  
 Dr. Robert J. Kerstein  
 Dr. Douglas K. Kessler  
 Mr. Franklin R. Kimbro  
 Mr. Jack King  
 Mr. and Mrs. David A. and Debra  
     S. Kinser  
 Dr. Marcy Kittner  
 Mr. Ralph D. Klein  
 Dr. G. Jeffrey Klepfer  
 Dr. and Mrs. Stephen M. Krist  
 Mrs. Ann M. Kulig  
 Mr. John J. Lamoureux  
 Dr. William D. Leith  
 Mr. S. Dean Lesiak  
 Mr. Edgel C. and Dr. Deborah  
     M. Lester, Jr.  
 Mr. Robert A. Lewandowski  
 Mr. Harold C. Lewis  
 Mr. Dave Lichtenfels  
 Mrs. Lisa Rosen Lievense

Dr. Clayton S. Long  
 Mr. Dennis A. Lopez  
 Mr. and Mrs. George and Judith  
     Lorenz  
 Ms. Elizabeth R. Lynn  
 Mr. and Mrs. Edward R. Mack  
 Mr. and Mrs. Stephen and Rose-Marie  
     Magriby  
 Mr. David Maguire  
 Mr. Scott K. Mahlum  
 Mr. Mark D. Mahmood  
 Mrs. Mabel L. Malsbary  
 Mr. M. S. Mandell  
 Mrs. Mary Catherine Manning  
 Mr. and Mrs. John M. Marek  
 Mr. and Mrs. Christopher and Michele  
     Marois  
 Lt. Col. William B. Martin  
 Mr. James J. Martindale  
 Mrs. Lois McGucken McCormick  
 Mr. Robert C. McGirr  
 Mrs. Susan S. McLain  
 Ms. Lesli Kelsey McQueeny  
 Ms. Anne Marie Meegan  
 Dr. H. James Meginley  
 Ms. Laura L. Meisler  
 Mr. Robert F. Meredith  
 Mrs. Marion C. Merriner  
 Mr. Frederick C. Meyers  
 Mr. and Mrs. Glen and Lynn Meyers  
 Mr. J. Patrick Michaels, Jr.  
 Dr. Paul S. Michaelson  
 Ms. Cheryl Middlebrooks  
 Mr. Emory Allen Mikell  
 Ms. Gail C. Militello  
 Mr. and Mrs. Stephen K. Miller  
 Mr. and Mrs. Joe D. and Hilda Bethea  
     Mills  
 Mr. and Mrs. Ralph P. Millsap  
 Mr. Paul N. Minichiello, Sr.  
 Mr. and Mrs. Ashby Moody  
 Dr. and Mrs. William L. Moore  
 Mr. and Mrs. James E. and Sally  
     D. Moorehead  
 Ms. Jennifer G. Morris  
 Mrs. Lucille G. Morris  
 Mr. Francis R. Morse  
 Mr. Robert J. Muir  
 Cmdr. William M. Mulholland  
 Mr. James B. Murphy, Jr.  
 Dr. Shirley Piper Myers  
 Mr. and Mrs. Eugene H. and Doris  
     Nichols  
 Ms. Karen Nissen  
 Mrs. Sally Giroir Noller

Mr. Mark Novak  
 Col. H. P. Ohm  
 Mr. Guy W. Otto  
 Mr. Thaddeus C. Parker  
 Col. Wilmot E. Y. Paxton  
 Mr. and Mrs. David H. and Linda  
     D. Pearce  
 Mr. and Mrs. E. A. Peck  
 Mr. and Mrs. Mickey and Judy Perlow  
 Mr. Dale N. Petersen  
 Mr. John V. Pietrucha  
 Mr. and Mrs. Thomas A. Pignataro  
 Dr. and Mrs. J. Richard Piper  
 P & J Graphics  
 Mr. and Mrs. Steve and Diane Platau  
 Ms. Joyce S. Plumley  
 Ms. Michele L. Prater  
 Ms. Lorenda Pucci-Rey  
 Mr. and Mrs. Tom and Michael  
     Taylor Rao  
 Mr. William M. Rea  
 Mr. Cecil B. Reed  
 Mr. John Reehill  
 Mr. Kenneth J. Reid  
 Dr. Barbara Reischmann  
 Mr. Andrew Rey, Jr.  
 Dr. Stanley A. Rice  
 Mr. L. David Richardson  
 Mr. Alton L. Rine  
 Mr. Donald L. Robertson  
 Mr. and Mrs. Tracy Robin  
 Mr. Jeff Rogo  
 Mr. Jack L. Romano  
 Mr. and Mrs. David and Terri Ross  
 Dr. Thomas v. Rossi  
 Mr. Louis H. Sanchez  
 Mr. William A. Sandman  
 Dr. Luciano A. Santa Cruz  
 Mr. and Mrs. Les and Anita Scharf  
 Mr. Patrick O. Schneider  
 Mrs. Jane P. Setzer  
 Mr. James M. Shattuck  
 Mr. John H. Sherman, Jr.  
 Mrs. Lisa Schmitz Sherman  
 Mr. and Mrs. Manfred N. Siller  
 Mrs. Bethany C. Simmons  
 Maj. and Mrs. Patrick V. Simon  
 Mr. and Mrs. Bill Simpson  
 Mr. Charles C. Smith  
 Ms. Cindy Smith  
 Ms. Katherine M. Smith  
 Mr. Robert L. Smith

*Continued on Page 18 . . .*



# C O N T R I B U T O R S

Ms. Carol L. Spielberger  
Mr. and Mrs. Leman and Doris Stafford  
Mr. Thomas O. Stelling  
St. Joseph's Diagnostic Center  
Mr. and Mrs. James V. and Wilanne  
Starling Stowe  
Mr. Mark K. Straley  
Mr. Stephen W. Swindal  
Ms. Marie I. Swingley  
Mr. Rick Sylvester  
Mr. and Mrs. James K. and Linda  
S. Taggart  
Mr. and Mrs. Derek A. and Leslie Taylor  
Mr. and Mrs. Jerome R. Taylor  
Dr. Susan Mary Taylor  
Mr. and Mrs. Carmelo and Mona  
Testa-Secca

## 1992-93 SPAULDING SOCIETY

*Continued from Page 17*

Ms. Charlotte Anne Thompson  
Mr. Douglas J. Titus, Jr.  
Mr. Daniel Trougott  
Dr. Michael H. Truscott  
Mr. Robert W. Turner  
Mrs. Mary Jones Tylander  
Mr. Jeremy S. Tyree  
Mrs. Mattie Vega  
Dr. Eric Vlahov  
Mr. James W. Vondrak  
Mr. Jim von Gartzen  
Ms. Christine E. Walker  
Mr. and Mrs. David F. Walker

Dr. H. Griffin Walling, Jr.  
Mrs. Mary Ann Ward  
Mr. Sterling Wardwell  
Ms. Kathryn Perdicaris Weed  
Mr. and Mrs. William S. Weprin  
Mr. Frederick S. Werdine  
Ms. Ruth Wernick  
Mr. William L. Willard  
Ms. Diana L. Winoker  
The Wirthlin Group  
Mrs. Mary Shackelford Wolfe  
Mr. and Mrs. Manuel and Josie  
Yglesias  
Mr. Teo Zacchini  
Mr. Lee Zeigler  
Mr. Bruce Zelazoski  
Ms. Marci E. Zimmerman

## 1992-93 SWORD & SHIELD

Contributors to athletic programs of The University of Tampa are recognized as members of the Sword & Shield Club. With the support of these special donors, Spartan Athletics continues to grow and achieve.

### SWORD & SHIELD \$1,000 AND ABOVE

Mr. and Mrs. John L. Adcock  
Mr. Paul W. Allaert  
Mr. and Mrs. Sam M. Bailey  
Mr. W. Kendall Baker  
Dr. Roger Brainard  
Mr. and Mrs. Edward and Lois  
Brennan  
Mr. and Mrs. Robert and Alice Briones  
Mr. Patrick J. Canavaggio  
Caspers Co.  
Champion Footwear  
Danka Industries, Inc.  
Mr. Thomas E. Doozan  
Mr. Bernie Epstein  
Mr. Thomas M. Evans  
Mr. Robert J. Gordon  
Mr. John A. Green  
Healthsouth Sports Rehabilitation  
Holiday Inn - Airport  
Holiday Inn - Ashley Plaza  
Mr. and Mrs. William Kraft  
Michael J. Leding, Jr. & Associates, Inc.  
Manufacturers Bank of Florida  
Mr. Tino Martinez  
Mr. Robert E. Morris  
Mr. and Mrs. David R. Murphey  
Mr. and Mrs. Vincent J. Naimoli  
Mr. and Mrs. Lester K. Olson  
Pepin Distributing Company  
Pepsi-Cola Bottling Company - South

Tampa Alpha Alumni Chapter  
Dr. Dennis F. Pupello  
Mr. Frederick M. Rothenberg  
Mr. Robert V. Rupp  
Selena's Restaurant  
Dr. Richard G. Sellers  
Mr. and Mrs. William T. Snyder, Jr.  
The Tampa Tribune  
Mr. and Mrs. G. Richard and Sandy  
Thomas  
Dr. and Mrs. Eric Vlahov  
Mr. and Mrs. Theodore E. Wade

### SWORD & SHIELD \$500 - \$999

AAA Auto Club South  
Mr. Joseph Abrahams  
Anthony Distributors Inc.  
Busch Gardens/Adventure Island  
Mr. and Mrs. Charles Caccamo  
Mr. and Mrs. Michael and Mary  
Childers  
Davis Baldwin Insurance and Risk  
Management Inc.  
Domino's Pizza Inc.  
Mr. Giles L. Ellis, Jr./Tampa Jai Alai  
Mr. J. Patrick Figley  
Dr. Brian L. Garman  
Mr. and Mrs. Tino and Rosa Gonzalez  
Mr. Michael G. Harley  
Mr. and Mrs. Edward I. and Wanda  
Howell

Mr. and Mrs. Mark M. Kane  
Dr. and Mrs. Jeffrey G. Klepfer  
Mr. and Mrs. Fred D. Learey  
George A. Levy Inc.  
Mr. Jack Lowman, Jr.  
NationsBank N.A.  
Mr. and Mrs. J. Larry Massingill  
Mr. and Mrs. J. Ross Parker  
Dr. Xavier E. Prida  
Rainbow Flowers, Inc./Mr. Ken Lee  
Mr. Richard J. Schwartz  
Mr. and Mrs. T. Terrell Sessums  
Mr. and Mrs. Richard A. Swirbul  
Tampa Sports Club  
Mr. and Mrs. Glenn W. and Mary  
S. Tobin  
Mr. and Mrs. Lee and Valerie Tobin  
Mr. and Mrs. Hindman Wall  
Mr. and Mrs. Joseph J. Zalupski

### SWORD & SHIELD \$250 - \$499

Barnett Bank of Tampa/Mr. James  
W. Ivey  
Dr. and Mrs. Robert M. Birrenkott  
Mr. Cary Michael Bogue  
Mr. James P. Bradley  
Mr. Douglas K. Brooks  
Burger King Corporation  
Mr. and Mrs. William R. Cash  
Mr. and Mrs. Douglas B. Cohn



# C O N T R I B U T O R S

Mr. and Mrs. Jeffrey and Anne-Marie  
Fagler

Mr. James L. Ferman, Jr.

Mr. Michael A. Fogarty

GBS Forms & Systems, Inc.

Mr. Curt Genders

Mrs. Dorothy J. Glover

Gold Cup Coffee Service

Mr. and Mrs. Michael and Denise  
Halfast

Humana Health Care Plans

Anonymous

Mr. and Mrs. Gene King

Mr. and Mrs. Lee and Suzanne

Kirkman

Mr. Richard P. Kramer

Mr. and Mrs. Thomas McDonald

Mr. and Mrs. Michael J. Macaluso

Captain Bill Miller

Mr. Steve Mitchell/Annis Mitchell

Cockey et al

Mr. Nicholas F. Mooney

Mr. Eric R. Nordheim

Mr. Greg K. Nordheim

Mr. and Mrs. Rick and Sheri Ogorek

Mr. and Dr. Aurelio Prado, Sr.

Price Waterhouse

Mr. and Mrs. Angel Ranon

Ringhaver Equipment Company

Romac and Associates/David L. Dunkel

Roger S. Sofer & Associates, Inc.

Mr. Harry E. Teasley, Jr.

TECO Energy, Inc.

Mrs. Esther S. Tobin

Bob Wilson Dodge, Inc.

Mr. and Mrs. Jack Wilson

Mr. and Mrs. Scott Wilson

## **SWORD & SHIELD**

**\$100 - \$249**

Mr. Alfred Alessi

Minnie and Julius Annis

Foundation, Inc.

Mr. Travis Allred/Brisco Brothers

Mr. and Mrs. Thomas A. Barrow

Mr. Michael L. Benito

Dr. Wade G. Birch

Mr. and Mrs. Chris F. and Barbara

Bryan

Mr. Wayne Byrne

Mr. and Mrs. Michael and Virginia  
Casagrande

Mr. and Mrs. Francis L. Corden

Mr. Austin R. Curry

Mr. Anthony Cutrono, Jr., C.P.A.

Mr. and Mrs. Malcolm Eales

Mr. Glenn M. Fulgueira

Mr. Mario Garrido

Mr. Jaime Gonzalez

Mr. Joseph Guerriero

Mrs. Louise Gunnoe

Mr. and Mrs. Daniel T. and Barbara  
Gura

Mr. and Mrs. Matthew M. Haley

Mr. C. Lin Hall

Mr. and Mrs. Larry and June Hatlestad

Mr. and Mrs. Stephen P. Hess

Mr. and Mrs. Ray and Evelyn House

Mr. and Mrs. Thomas M. Janton

Mr. and Mrs. John Arthur Jones

Mr. and Mrs. James M. Kelly

Mr. James T. Kelly

Mr. and Mrs. Roger H. Kessel

Mr. and Mrs. Brian and Amy Kirkland

Mr. and Mrs. Michael J. and Judy

Kosiba

Mr. Dave Lichtenfels

Mr. Anthony F. Maniscalco

Mr. Daniel F. Martinez II

Mr. Peter H. Martinowicz

Ms. Linda Musante

Mr. Donald M. Nairne

Mr. and Mrs. Gary Nuszer

Mr. Kenneth R. Nuznoff

Mr. Fred P. Pancoast

Mr. William E. Ragan

Mr. and Mrs. Angel Ranon

Mr. Gary L. Rapp

Mr. Dennis Reardon

Mr. Cecil B. Reed

Mr. Sam K. Rennard

Mr. Roger Rodriguez

Mr. Dennis Sanchez

Mr. Marc David Sarnoff

Mr. and Mrs. Arni and Andrea

Sigurdsson

Mr. David R. Schulz

Mr. Jeff N. Sidor

Sigma Phi Epsilon

Sims Crane & Equipment Co.

Mr. L. Garry Smith, Jr.

Ms. Karen Solis

Mr. James Spellman

Mr. and Mrs. Randy Stevens

Mr. George W. Streff

Mr. and Mrs. Gil and Cathy Swalls

Tampa Stars Over 40 Baseball Team

Mr. and Mrs. Jeffrey and Cindy Tynes

Mr. Bruce A. Wilkie

WTVT, Inc.

## **SWORD & SHIELD**

**\$1 - \$99**

Mr. and Mrs. Ron Brown

Mr. and Mrs. John T. Bullock

Mr. Barry A. Bustillo

Cosio Insurance Agency Inc.

Mr. and Mrs. Oscar Disgdiertt

Mr. and Mrs. Frank Ferlita

Mr. and Mrs. J. A. Fernandez

Mr. Tom Fitzgerald

Mr. and Mrs. Jerome and Diane Fulton

Mr. Paul M. Gouin

Mr. and Mrs. Gerald S. and Patricia

Jackson

Ms. Therese M. Kominski

Mr. Greg K. Landmark

Ms. Dora Linares

Mr. and Mrs. Stephen Magriby

Mr. James J. Martindale

Mr. William H. McBride, Jr.

Mr. and Mrs. Bob and Cher Pittenger

Mr. and Mrs. Lelo and Pam Prado

Mrs. Sally Ramos

Mr. Harvey R. Reilich

Mr. James Reinach

Mr. Ernest Rubio

Mr. and Mrs. Richard and MaryJo

Schmidt

Mr. and Mrs. W. Thomas and Elizabeth

Snyder III

Mr. and Mrs. Armando Suarez

Mr. and Mrs. Mario F. Suarez

Mr. Daniel Tejjido

Ms. Mable Williams

Mr. Henry P. Zaranski

## **1992-93 UNIVERSITY OF TAMPA FACULTY & STAFF DONORS**

Mrs. Lydia M. Acosta

Dr. Michael K. Adams

Ms. A. Louise Agnew

Mrs. Donna R. Alexander

Mrs. Julie Anderson

Ms. Shirila Andes

Mrs. Audrey L. Ashley

Mr. Gregg Bachman

Mr. Arthur E. Bagley

Mrs. Wing S. Barfoot

*Continued on Page 20 . . .*



# C O N T R I B U T O R S

## 1992-93 UNIVERSITY FACULTY & STAFF DONORS

*Continued from Page 19*

Mrs. Angela M. Barkey  
Mrs. Susan E. Beecroft  
Mrs. Anne M. Behrendt  
Ms. Annette J. Betancourt  
Ms. Alicia N. Biggers  
Dr. Lisa C. Birnbaum  
Dr. Robert M. Birrenkott  
Dr. Earl W. Boatwright, Jr.  
Dr. Scott D. Bonifield  
Dr. Dale Bracken  
Mrs. Laurie C. Bradford  
Ms. Ruth Bragg  
Dr. Stephen Breslow  
Ms. Susan F. Brinkley  
Ms. Linda E. Britton  
Ms. Carolyn A. Britz  
Dr. Joan Brock  
Ms. Adrian L. Brown  
Dr. Peter Brust  
Mr. Robert A. Bunnell  
Ms. Lydia E. Burguet  
Mr. Stephen M. Burroughs  
Ms. Cathy M. Butler  
Dr. Randall K. Campbell-Wright  
Mrs. Peggy L. Caparratto  
Mrs. Kelly M. Cason  
Mr. F. Chris Catanach  
Ms. Irene B. Chancellor  
Ms. Linda Clark  
Dr. Edward F. Cloutier  
Dr. Gerardine Cochran  
Ms. Jo Ann Coleman  
Ms. Marlyn R. Cook  
Mr. Robert Cook  
Dr. Gordon W. Couturier  
Mr. Eugene Cropsey  
Mrs. Jane Cropsey  
Ms. Pamela A. Cunningham  
Mrs. Sharon M. Cypriano  
Mr. Daniel J. Darcy  
Dr. Jan K. Dargel  
Mr. Gilbert DeMeza  
Ms. Nancy M. Deshaies  
Mrs. Linda Devine  
Mrs. Tania S. Diaz  
Mrs. Helen A. Dobbins  
Mr. R. Grant Donaldson  
Dr. Judy R. Downs  
Dr. Ruth K. Duncan  
Dr. Dean S. Ellis  
Ms. Dawn M. Eslick  
Ms. Cynthia D. Ezell  
Dr. Martin Favata  
Ms. Christian W. Felentzer  
Mrs. Joyce M. Fernandez

Dr. James Fesmire  
Mr. Peter Fingar  
Mr. Tom Fitzgerald  
Mr. Dana T. Fogg  
Dr. David B. Ford  
Ms. Paula E. Fry  
Mr. Jerome Fulton  
Dr. LeRoy A. Furr  
Mrs. Ruby Lee Gallagher  
Dr. Brian L. Garman  
Mr. John Giancola  
Dr. Francis X. Gillen  
Mrs. Deanne L. Godin  
Mrs. Carmen R. Gonzalez  
Ms. Guillermina J. Gonzalez  
Ms. Yvonne F. Gray  
Ms. Darlene B. Greene  
Dr. Frank M. Gryna  
Dr. Richard H. Gude  
Mr. Hayward Guenard  
Mr. Daniel T. Gura  
Mrs. Louise M. Hane  
Mr. Douglas G. Harding  
Dr. Thomas J. Hegarty  
Dr. Steve T. Hekkanen  
Dr. Steven A. Hendrix  
Dr. Suzanne M. Hiebert  
Mr. Philippe G. Hills  
Dr. Leon Hoke, Jr.  
Mrs. Jackie J. Holcomb  
Mrs. Barbara A. Holmes  
Ms. Evelyn P. House  
Mrs. Dolores Draper Hull  
Ms. Elizabeth Hunt  
Ms. Patricia A. Hunt  
Mrs. Catherine N. Huntress  
Mrs. Melinda L. Huskey  
Dr. Dori Ingersoll  
Dr. Ronald J. Ingersoll  
Dr. David Clark Isele  
Dr. George F. Jackson III  
Mr. Joel Jankowski  
Dr. Michael G. Jeffries  
Mrs. Lynda A. Johnson  
Dr. Gilbert W. Joseph  
Mr. Thomas J. Judge  
Ms. Jean Keelan  
Mr. James M. Kelly  
Dr. Timothy W. Kennedy  
Dr. Robert J. Kerstein

Mrs. Carmen M. King  
Mr. Jack King  
Dr. Marcy Kittner  
Dr. G. Jeffrey Klepfer  
Dr. Kenneth L. Kraft  
Mr. James D. Krause  
Mr. Michael J. Leding, Jr.  
Dr. William D. Leith  
Mr. Marcelino Lemus  
Ms. Susan Taylor Lennon  
Dr. Paul J. Linnehan  
Ms. Carol A. Lisowski  
Dr. William J. Lohman, Jr.  
Dr. Clayton S. Long  
Dr. Burton N. Lowe  
Dr. Gary S. Luter  
Mr. Douglas B. MacCullough  
Mr. Stephen Magriby  
Ms. Nilda R. Martin  
Dr. Richard Matthews  
Mrs. Laura C. McCoolle  
Ms. Keven E. McGinn  
Dr. William McReynolds  
Ms. Anne Marie Meegan  
Dr. Michael J. Mendelsohn  
Ms. Lynn M. Meyers  
Mr. Stephen K. Miller  
Mrs. Joyce L. Moore  
Mrs. Kerry A. Moore  
Mrs. Sally D. Moorehead  
Dr. Donald D. Morrill  
Ms. Kimberly Morris  
Dr. R. Jack Munyan  
Dr. Linda Musante  
Ms. Lynn Carn Myers  
Dr. Suzanne Nickeson  
Mr. Fernando A. Nolasco  
Mr. Jeff Norton  
Col. Rollie Oatley, Jr.  
Dr. Kathleen Ochshorn  
Mr. Bernard J. O'Connor  
Mr. Rick Ogorek  
Ms. Glenda K. Ondracek  
Ms. Lori A. Oppenheim  
Mrs. Karen E. Otto  
Ms. Brenda K. Pancoast  
Dr. Terry M. Parssinen  
Mr. John W. Pelkey, Jr.  
Mrs. Judy K. Perlow  
Mr. Mickey Perlow  
Dr. J. Richard Piper  
Ms. Cheryl L. Pittenger  
Mr. Steve Platau  
Mrs. Donna B. Popovich  
Mr. Lelo Prado, Jr.



# C O N T R I B U T O R S

Ms. Michele L. Prater  
Dr. W. Wayne Price  
Dr. George M. Puia  
Dr. Fred Punzo  
Mrs. Mary Ann Punzo  
Dr. Philip F. Quinn  
Dr. William L. Rhey  
Dr. Stanley A. Rice  
Ms. Tammy Rich  
Mrs. Constance Y. Roda  
Ms. Linda A. Rodriguez  
Mrs. Sonia Romero  
Mrs. Lisa A. Rorrer  
Dr. Nancy C. Ross  
Mrs. Anne L. Rowland  
Mr. Robert Ruday  
Dr. David G. Ruffer  
Ms. Gloria C. Runton  
Dr. Hemant Rustogi  
Ms. Linda S. Ryan  
Dr. Constance B. Rynder

Dr. Mary Jane Schenck  
Dr. Raymond A. Schlueter  
Mr. Richard Schmidt  
Ms. Sandra A. Schuh  
Dr. Britt Shirley  
Mrs. Alma L. Shoemaker  
Dr. Helene Silverman  
Mrs. Irene E. Simpson  
Mr. W. "Tom" Snyder III  
Dr. Andrew J. Solomon  
Ms. Carol L. Spielberger  
Mr. William J. Starling  
Dr. John A. Stocker  
Ms. Melodee M. Suarez  
Mr. Brian Sutton  
Mr. Gil Swalls  
Mrs. Ledra Sweeney  
Mrs. Mamie Tapp  
Dr. Susan Mary Taylor  
Mr. Robert J. Terri  
Mr. Joe Testa-Secca  
Mrs. June J. Thomas

Dr. Emilio Toro  
Mr. Daniel Traugott  
Ms. Mary Ann Trujillo  
Dr. Michael H. Truscott  
Ms. A. Tracy Tucker  
Ms. Maxine T. Tucker  
Dr. Kathryn VanSpanckeren  
Dr. Ronald L. Vaughn  
Mrs. Tia A. Vickers  
Mrs. Denise A. Vlahov  
Dr. Eric Vlahov  
Mr. Hindman P. Wall  
Dr. H. Griffin Walling, Jr.  
Mr. Mickey E. Wells  
Mr. Malcolm Westley  
Mrs. Kathleen Wiedemer  
Mrs. Sandra Winegar  
Dr. Bruce C. Winkler  
Dr. Elizabeth Winston  
Mr. Roy N. Young  
Mr. James L. Zachary

## 1992-93 GIFTS (\$1-\$99)

Mr. and Mrs. Robert and Karen Abberger  
Lt. Col. Charles S. Abell  
Mr. and Mrs. Richard and Linda Sue Ackert  
Mr. and Mrs. Miguel and Lydia M. Acosta  
Dr. and Mrs. Joseph D. Adams  
Mr. Joseph R. Adams, Sr.  
Mr. Robert Addens  
Ms. A. Louise Agnew  
Mrs. Margaret Neef Agnew  
Mr. Oscar Aguayo  
Mr. and Mrs. John C. and Kim Patterson Ainsworth  
Ms. Patricia Alchediak  
Mrs. Gloria Gutierrez Alderman  
Mrs. Donna R. Alexander  
Mr. Dale W. Allen, Jr.  
Lt. Col. Harry E. Allen  
Ms. Michelle M. Allen  
Mr. P. M. Allen  
Mr. Patrick H. Allman III  
Ms. Evelyn L. Almand  
Mr. Ernest A. Alonso  
Mr. Marshall Evan Ames  
Mrs. Jean Lackovic Amuso  
Mr. Carl Roy Anderson  
Ms. Gabrille Anderson  
Ms. Julie Anderson  
Ms. Shirila Andes  
Mr. William J. Antonini

Ms. Celia M. Aquino  
Msgt. Miller B. Arbutine  
Mr. Ruben Ares  
Mr. Jack A. Arnold  
Mr. Jon C. Arnold  
Mr. Marvin Aronovitz  
Around The Town, Inc.  
Mr. Mark W. Arrowood  
Mrs. Audrey L. Ashley  
Mr. Robert H. Ashmead  
Mrs. Jill Henry Aufiero  
Ms. Judi Aust  
Ms. Jan Fisher Ayala  
Ms. Jan Aylward  
Mr. and Mrs. Arthur E. Bagley  
Ms. Heather A. Bailey  
Mr. David W. Baker  
Mr. Gary Baker  
Mrs. Phyllis Flanagan Baker  
Mrs. Sheryle R. Baker  
Mr. Edward M. Baldwin, Jr.  
Ballet Folklorico of Ybor  
Mr. and Mrs. James L. Barfoot  
Mr. Rudolph L. Barker  
Mrs. Angela M. Barkey  
Mr. David M. Barksdale  
Ms. Carol A. Barnes  
Mr. and Mrs. John M. Barrett  
Ms. Michele Barry  
Mrs. Rose Beiro Barus  
Mr. Jerry O. Batley, Jr.  
Ms. Margaret J. Bator

Mr. Roger W. Baum  
Mr. and Mrs. Patrick Bayard  
Mrs. Betty Johnson Becker  
Mr. Jack D. Begelman  
Mrs. Anne M. Behrendt  
Mr. William W. Bennett, Jr.  
Mr. and Mrs. Allen Benz  
Ms. Martha Berdeal  
Mr. Thomas R. Berg  
Mr. Bruce H. Berger  
Mr. Herbert M. Berkowitz  
Mr. Thomas A. Bernadzickowski  
Ms. Kelly A. Besch  
Mr. Sam G. Bessis  
Ms. Annette J. Betancourt  
Miss Alicia N. Biggers  
Dr. Lisa C. Birnbaum  
Ms. Tiffany Jill Bishop  
Mr. Lael Blackstone  
Mr. and Mrs. Scott and Rebecca Blackwell  
Ms. Stacey L. Blackwood  
Mr. Bob Blanchard  
Mr. George L. Blanco  
Mr. Rock A. Blanco  
Mr. William W. Blankenship  
Mrs. Clementina V. Bode  
Ms. Andrea L. Bogusky  
Mr. Joe Bohren  
Mr. Robert L. Boileau and Ms. Sherrie Gill  
Ms. Cynthia L. Boliard

Ms. Lorelei F. Bolze  
Dr. Scott D. Bonifield  
Maj. James Lee Bonnette  
Mr. and Mrs. Warren G. Boswell  
Ms. Elizabeth L. Bourdreau  
Mr. and Mrs. Raymond Bourgholtzer  
Maj. Kenneth G. Bowen  
Mr. Charles E. Bowers  
Mr. Brian P. Bowman  
Ms. Madelyn Grace Boyd  
Mr. William Benjamin Boyd  
Dr. Dale Bracken  
Mr. and Mrs. William Bradford  
Mr. Philip C. Bragg  
Ms. Ruth Bragg  
Mr. Frank L. Brandon, Jr.  
Mrs. Imogene H. Braswell  
Mr. Joel P. Braverman  
Ms. Janice F. Bravo  
Mr. Dennis J. Breen  
Mr. Thomas C. Breslin  
Dr. and Mrs. Samuel E. Brick  
Miss Susan F. Brinkley  
Mr. Joseph P. Brinton III  
Mr. Donald R. Britt  
Mr. Harry Y. Britton  
Ms. Linda E. Britton  
Ms. Carolyn A. Britz  
Dr. Joan Brock

*Continued on Page 22 . . .*



# C O N T R I B U T O R S

## 1992-93 GIFTS (\$1-\$99)

*Continued from Page 21*

Lt. Col. O. Lee Brock  
 Ms. Laura Weathers Brooks  
 Ms. Adrian L. Brown  
 Lt. Col. Lawrence C. Brown  
 Mrs. Regina L. Brown  
 Ms. Shirley Rector Brown  
 Mr. David R. Bruss  
 Dr. and Mrs. Peter Brust  
 Ms. Tammy J. Buchan  
 Mrs. Bertha Bullard  
 Mrs. Ruth Burch  
 Dr. Richard Langworthy  
 Burdick  
 Ms. Lydia E. Burguet  
 Capt. Walter Burkett  
 Mr. Stephen M. Burroughs  
 Mrs. Rita Jackson Burysek  
 Ms. Bernardine A. Butler  
 Ms. Cathy M. Butler  
 Dr. K. Nelson Butler  
 Mr. and Mrs. Joseph A. and  
 Carmen A. Cacciatore  
 Mrs. Mary Licalsi Cagnina  
 Ms. Ruth Morgan Caldwell  
 Ms. Norma Caltagirone  
 Mr. John B. Cameron  
 Mr. and Mrs. Michael J. and  
 Edda Zupovitz Cammick  
 Mr. Marvin W. Campbell  
 Dr. Randall K. Campbell-Wright  
 Mr. Roger S. Campeau  
 Mrs. Alice Campion  
 Mrs. Estela G. Cannella  
 Mr. David F. Cannon  
 Mr. and Mrs. Robert F. Cannon  
 Mrs. Peggy L. Caparratto  
 Mr. Richard R. Caravana  
 Mr. Robert C. Carlen, Jr.  
 Mr. M. Haze Carleton  
 Ms. Jean C. Carlson  
 Dr. and Mrs. Leffie M. Carlton  
 Mrs. Stella Rogers Carr  
 Mr. Vincent Carrodegua  
 Mr. and Mrs. Robert F. Cascella  
 Mr. and Mrs. Eugene J. Casey  
 Mrs. Kelly M. Cason  
 Mr. Rosendo J. Castillo  
 Mr. Robert C. Castle  
 Mr. and Mrs. Earl D. and Elsie  
 L. Caton  
 Mrs. Mary Esther V. Champion  
 Mr. and Mrs. Wesley J. and Lisa  
 P. Champney  
 Ms. Irene B. Chancellor  
 Chase Education Finance  
 Center  
 Mr. and Mrs. David M. Chatfield  
 Mrs. Merry K. Chinnock  
 Mrs. Jeanne Chitester-Stinger  
 Mrs. Marien Kanne Christensen  
 Mr. and Mrs. Mack T. Christian

Ms. Gael M. Christie  
 Mr. Jay M. Chrobak  
 Mr. Kirk D. Churchill  
 Ms. Lisa J. Owen Churilla  
 Mr. Leonard J. Cimador  
 Mr. Thomas J. Cindric  
 Mr. Ronald L. Cinnamon  
 Dr. Axel W. Claesges  
 Ms. Beth-Anne Clancy  
 Mr. and Mrs. J. Wayne and Ruth  
 Almand Clark  
 Ms. Linda Clark  
 Mr. Richard T. Clausi  
 Clearwater Chemical Corp.  
 Mrs. Marian DiMarco Cleland  
 Mr. George A. Clement  
 Dr. Edward F. Cloutier  
 Ms. Vivian L. Coates  
 Dr. Gerardine Cochran  
 Mr. and Mrs. Donald B. Cogen  
 Ms. Jo Ann Coleman  
 Mr. Andrew Conda  
 Mrs. Julaine Condon  
 Ms. Michele M. Coneys  
 Mr. John Connolly and Ms.  
 Deborah Kurelik  
 Mr. William R. Conover III  
 Mrs. Theodore J. Conway  
 Ms. Marlyn R. Cook  
 Ms. Reba F. Cook  
 Dr. Robert J. Cook  
 Mr. L. W. Cooper  
 Mrs. Peggy A. Cooper  
 Mr. Robert E. Coover  
 Mr. Charles B. Cordeiro, Jr.  
 Mrs. Christine M. Cosgrove  
 Mr. Dan M. Costa  
 Mr. William L. Couchenour  
 Mr. William J. Counihan III  
 Ms. Ileana R. Couret  
 Ms. Susan G. Courtney  
 Mrs. Sylvia A. Covington  
 Mr. David A. Cowdrick  
 Mr. Kristin K. Cox  
 Mr. and Mrs. Allen W. and  
 Sandra K. Craft  
 Lt. Col. Elwyn L. Cranford  
 Ms. Pauline Craver  
 Lt. Col. Marcus B. Crisman  
 Mr. and Mrs. Eugene H. and  
 Jane Cropsey  
 Mr. and Mrs. Jim and Gail  
 Crosby  
 Mr. and Mrs. William M. and  
 Marietta B. Crosby  
 Mrs. Sharon S. Cross

Mr. and Mrs. Robert S. and  
 Coleen L. Crouch  
 Mr. John E. Crumbley  
 Mr. and Mrs. James M. and  
 Amy B. Crumpton  
 Ms. Sandy Cruse  
 Mrs. Lisa H. Culberson  
 Mrs. Louise Twyman Cullen  
 Mrs. Cheryl Austin Cunningham  
 Ms. Pamela A. Cunningham  
 Capt. Pamela E. Currie  
 Mrs. Sharon M. Cypriano  
 Mr. Carl H. Dahm  
 Rev. Otto L. Dale  
 Mr. Lee S. Damsker  
 Mrs. Mervella I. Daniels  
 Mr. William H. Daniels  
 Mr. John J. Daoud  
 Mr. Daniel J. Darcy  
 Mrs. Lorraine D. Datello  
 Mr. Alfonso A. Dato  
 Mrs. James Staples Daugherty  
 Mr. Michael J. Davies  
 Mr. and Mrs. Dudley W. and Flo  
 B. Davis  
 Mr. LaRone T. Davis  
 Mrs. Margaret Davis  
 Mrs. Sandra Day  
 Mrs. B. J. Dean  
 Mr. and Mrs. Chris B. and Ann  
 Watson DeBellevue  
 Mr. William H. DeCelle  
 Mr. David Dees  
 Ms. Ann L. Dela Cruz  
 Rev. Oswald Delgado  
 Mrs. Delia Delgrado  
 Mr. Andrew DeMeyer  
 Ms. Angela D. Dennis  
 Mr. Ronald L. Dennison  
 Ms. Nancy M. Deshaies  
 Mr. James A. Diaz  
 Mr. Louis R. Diaz  
 Mrs. Rose C. Diaz  
 Mrs. Tania S. Diaz  
 Ms. Betty Cumbie DiBona  
 Lt. Col. Joseph DiStefano  
 Mr. Richard B. D'Louhy  
 Mrs. Helen A. Dobbins  
 Mr. and Mrs. Eugene B. Dodson  
 Ms. Meg Dols  
 Mrs. Carol Dore-Falcone  
 Mr. Mark F. Douglas  
 Ms. Claire Downes  
 Dr. Judy R. Downs  
 Mrs. Janice Babe Dragone  
 Mr. Dean C. Drapin

Mr. Jack Dromey  
 Mr. Richard Dubin  
 Mr. Daniel M. Duda  
 Mr. John T. Duff  
 Col. Andrew S. Dulina III  
 Ms. Betty M. Dumas  
 Mr. and Mrs. Lee and Anna  
 Duncan  
 Dr. Ruth K. Duncan  
 Ms. Eveline P. Dunning  
 Mrs. Cynthia D. Dutkowsky  
 Ms. Sharyn Duval  
 Ms. Mary Sheridan Easton  
 Mr. and Mrs. Ray Eddy  
 Mr. John Russell Edge  
 Mr. George E. Edmonson, Jr.  
 Ms. Erica L. Edwards  
 Mr. L. G. Edwards  
 Ms. Kathleen Mary Egan  
 Mr. James M. Eikeland  
 Ms. Cathleen Moran Elisha  
 Mrs. Debbie Elliott  
 Dr. Dean S. Ellis  
 Mr. Ray F. Ellis  
 Ms. Elizabeth Harrison Engel  
 Ms. Gini L. England  
 Mr. George W. Ericksen  
 Mr. Keith R. Erickson  
 Mr. and Mrs. William C. and  
 Louise W. Erk  
 Mr. Donald N. Esposito  
 Ms. Lillian G. Ettinger  
 Mr. Alphonse N. Falco, Jr.  
 Col. Joseph V. Fedale  
 Mr. and Mrs. Willard Fein  
 Ms. Naomi E. Feldman  
 Mr. Christian W. Felentzer  
 Mrs. Karen Brooke Fenton  
 Mr. Marco J. Feola, Jr.  
 Mr. John X. Ferlita  
 Dr. Eustasio Fernandez  
 Mr. and Mrs. Gabriel C. and  
 Joyce M. Fernandez  
 Lt. Col. Robert A. Fimbel  
 Mr. Robert L. Fish  
 Ms. Eleanor A. Fisk  
 Dr. Lawrence T. Fitzgerald  
 Mr. Daniel C. Florenco  
 Mr. Robert Florio  
 Mr. Jerome T. Flynn, Jr.  
 Dr. Carroll E. Fogal  
 Ms. Brenda Foddy  
 Mrs. Lucille Fleet Ford  
 Mr. Daniel F. Francabandiero  
 Ms. Martha A. Franco  
 Ms. Shirley Frank  
 Mr. John H. Franks  
 Mr. Derek A. Fredette  
 Col. Herman O. Freeman  
 Mrs. Wanda Carolyn Frenzel  
 Mr. John F. Friedery



# C O N T R I B U T O R S

Mr. Herbert J. Friedman  
 Ms. Paula E. Fry  
 Mr. W. Karl Funds  
 Dr. LeRoy A. Furr  
 Mrs. Eva Maggio Gabriel  
 Mr. James J. Gabriel  
 Mr. Wilfred Gaier  
 Mrs. Ruby Lea Gallagher  
 Mrs. Ethel L. Gallaher  
 Mrs. Maria Derencin Gallina  
 Mr. Gonzalo C. Garcia  
 Dr. Brian L. Garman  
 Mrs. Joan Kelly Garrison  
 Mr. Geoffrey R. Garson  
 Ms. Angela Sue Gates  
 Mr. and Mrs. Bob and Maria  
   Gelinas  
 Mrs. V. Oliva Georgius  
 Mr. and Mrs. Scott K. Gibson  
 Dr. and Mrs. Francis X. Gillen  
 Ms. Patricia A. Gillette  
 Mr. Paul M. Githens  
 Mr. Domenic V. Guinta  
 Mr. Willilam W. Godfrey  
 Mrs. Deanne L. Godin  
 Mr. Armando H. Godinez  
 Mrs. Margaret M. Goff  
 Mr. Bruce K. Goldberg  
 Mr. Dean Goldsmith  
 Mr. Anthony S. Gonzalez  
 Mrs. Carmen R. Gonzalez  
 Mrs. Edith Elozory Gonzalez  
 Ms. Guillermina J. Gonzalez  
 Mr. and Mrs. Jim and Fran  
   Grace  
 Mrs. Frances Hornsby Graf  
 Mr. Clifford E. Granger  
 Mrs. Charlotte H. Grant  
 Ms. Yvonne F. Gray  
 Ms. Darlene B. Green  
 Mrs. Miriam Davis Green  
 Mr. Marcus W. Greene  
 Mr. Ralph M. Griffin, Jr.  
 Mrs. Gloria J. Griffith  
 Mr. Richard M. Griffith  
 Ms. Joan W. Griggs  
 Mr. and Mrs. Brian L. Groene  
 Mr. and Mrs. Edward C. Gross  
 Mr. Richard H. Gruber  
 Dr. Frank M. Gryna  
 Mr. Hayward Guenard  
 Lt. Col. C. Wayne Guest  
 Dr. Giacomo S. Guggino  
 Mr. Marco T. Gutierrez, Jr.  
 Ms. Ruth H. Haager  
 Mr. and Mrs. Robert O. Hach  
 Ms. Leah M. Hunter Hackney  
 Mr. John E. Haefeli  
 Mr. Charles W. Haldane  
 Mr. Leonard Hale  
 Mrs. Jeanie Trice Hall

Mr. Seth D. Halpern  
 Mr. and Mrs. Bill and Mary  
   Virginia Handley  
 Mrs. Louise M. Hane  
 Dr. Kenneth W. Haney  
 Mr. Leroy W. Hansen  
 Mr. and Mrs. Joseph G. Hanson  
 Lt. Col. Casimir J. Harazda  
 Mr. Douglas G. Harding  
 Mrs. Doris W. Hargrove  
 Ms. Dorothy Harper  
 Mrs. Margaret B. Harris  
 Mr. and Mrs. Robert and Louisa  
   Way Hart  
 Mr. and Mrs. Russ and Janet  
   Hart  
 Mr. Tracy Alan Harvard  
 Mr. John D. Hassett  
 Mrs. Julie C. Hawks  
 Mr. and Mrs. T. Wayne and  
   Margery Hayes  
 Ms. Amy Hill Hearth  
 Dr. Steve T. Hekkanen  
 Dr. Steven A. Hendrix  
 Mr. John K. Henne  
 Mr. and Mrs. Andrew J. and  
   Sylvia A. Henry  
 Mr. G. B. Henry  
 Mr. John H. Hernandez  
 Lt. Mark M. Herrin  
 Lt. Dana L. Hess  
 Dr. and Mrs. Linus Hewit  
 Dr. Suzanne M. Hiebert  
 Mrs. Ann J. Hilliard  
 Mrs. Elizabeth W. Himes  
 Mr. and Mrs. Andrew H. Hines  
 Mrs. Lynnette M. Hirth  
 Mr. Andrew Hlavach  
 Mr. Dan S. Ho  
 Mrs. Robyn K. Hoban  
 Mr. James H. Hockenberger  
 Ms. Claire Charlton Hoel  
 Mr. Robert P. Hoenscheid  
 Mrs. Dolores A. Hoffman  
 Dr. and Mrs. Leon Hoke, Jr.  
 Mrs. Jackie J. Holcomb  
 Mrs. Natalie A. Holmes  
 Ms. Annie M. Horne  
 Mr. and Mrs. William H. and  
   Thelma M. Horne  
 Mr. David D. Horner  
 Mr. Gergory F. Howell  
 Mr. Samuel M. Hubbell  
 Mr. Christopher P. Hughes  
 Mr. William B. Hungerford, Jr.  
 Ms. Elizabeth Hunt  
 Ms. Patricia A. Hunt  
 Mr. and Mrs. James Huntress  
 Mr. John B. Hurd, Jr.  
 Mr. and Mrs. Francis E. and  
   Florence Rogers Hurn

Mrs. Melinda L. Huskey  
 Mr. and Mrs. Carlisle and  
   Reonthia C. Hutchinson  
 Mrs. Geraldine Law Hynes  
 Mr. Earl P. Jacob, Jr.  
 Lt. Col. I. E. Jacobs  
 Mr. Samuel E. Jacobson  
 Mr. Joel Jankowski  
 Ms. Mary Jo Jarrett  
 Mrs. Mary Jane Jeffery  
 Mr. Matt M. Jetton  
 Mr. Benjamin W. Johnson  
 Mrs. Betty R. Johnson  
 Mrs. Dorothy W. Johnson  
 Mr. Francis E. Johnson  
 Mr. and Mrs. Raymond Johnson  
 Mr. Tom J. Johnson, Jr.  
 Mrs. Lila L. Johnson-Thomas  
 Mr. and Mrs. F. Bertram and  
   Jean Johnston  
 Mrs. Virginia V. Johnston  
 Col. Arthur A. Jones  
 Mr. Charles B. Jones  
 Sgt. Vernon R. Jones  
 Ms. Anne T. Joyce  
 Mr. and Mrs. Thomas J. Judge  
 Mr. and Mrs. Ernest M. Kaiman  
 Mr. Brian S. Kanter  
 Mr. Bentley F. Kaplan  
 Mr. Jack Kaplan  
 Dr. Robert H. Kasriel  
 Mr. Bill Katsaras  
 Ms. Jitka Kavanaugh  
 Ms. Maureen Kearney  
 Ms. Jean Keelan  
 Mr. Lawrence Paul Keenan  
 Mrs. Mary D. Keener  
 Mr. Sean R. Kelley  
 Mrs. Grace Bruton Kelly  
 Mr. Joseph H. Kelly, Jr.  
 Mr. and Mrs. Leo G. Kelly  
 Ms. Arlene Anne Kennedy  
 Dr. Timothy W. Kennedy  
 Mr. David B. Kerr  
 Mr. Joseph H. Kerr  
 Mr. Richard A. Kerstein  
 Mr. William C. Kiefert  
 Mrs. Carmen M. King  
 Mrs. Mary J. King  
 Mrs. Phyllis Hagin King  
 Mr. Roy C. Kiser  
 Mr. Bruce M. Klay  
 Ms. Esther S. Kleine  
 Mrs. Shirley Janis Knapp  
 Ms. Dana Kober-Manny  
 Ms. Therese M. Kominski  
 Mrs. Connie Kone  
 Ms. Angela Alvarez Konen  
 Mr. Anthony P. Kopecky  
 Ms. Judy Kopitnik  
 Mr. Clifford W. Korn, Jr.

Dr. Kenneth L. Kraft  
 Lt. Col. Stanley S. Kraus  
 Mr. James D. Krause  
 Mr. and Mrs. Fred and Mary  
   Kreider Trust  
 Mr. Stephen J. Krist  
 Mrs. Anne M. Kutchmire  
 Dr. Gerald Kutzman  
 Kuumba Dancers and  
   Drummers  
 Ms. Juliet LaDouceur  
 Ms. Therese J. LaDouceur  
 Mr. and Mrs. Mark and Gail  
   Landers  
 Mrs. Mary Landsberger  
 Mr. Paul R. Lang  
 Mr. Mark F. Lapp  
 Mr. Samuel Lasky  
 Mr. Alfred C. Laubsch  
 Ms. Margaret Lauder  
 Mrs. Jean S. Law  
 Mr. Michael R. Lawrence  
 Mr. and Mrs. Victor and Lee  
   Leavengood  
 Mr. Kenneth L. Lee  
 Mr. Richard H. Lee, Jr.  
 Mrs. Anna M. Leeds  
 Mr. Thomas F. Leffler  
 Mr. Marcelino Lemus  
 Ms. Susan Taylor Lennon  
 Dr. Lionel O. Leon  
 Mr. C. Scott Leonard  
 Mr. Ed Levine  
 Mr. and Mrs. J. Leonard Levy  
 Mr. David E. Lewis  
 Mr. Theodore R. Liautaud  
 Mr. and Mrs. Steve and Ashlee  
   Liautaud  
 Mr. Norman G. Light  
 Ms. Laura Malear Lindeman  
 Dr. Paul J. Linnehan  
 Maj. Charles M. Linville  
 Ms. Kathryn S. Lipman  
 Ms. Mary E. Liro  
 Mr. Frederick G. Little  
 Ms. Carol A. Lisowski  
 Mrs. Gail M. Llorca  
 Mrs. Nancy Taylor Lloyd  
 Mrs. Jennie Cusmano Locicero  
 Ms. Ruth M. Lodde  
 Mr. and Mrs. Claude D. Logan  
 Dr. and Mrs. William J. and  
   Tasha H. Lohman, Jr.  
 Mr. S. Hansen Long  
 Mr. and Mrs. David J. and Ellen  
   LoNigro  
 Mr. William R. Lorton  
 First Lt. and Mrs. John M. Lowe

*Continued on Page 24 . . .*



# C O N T R I B U T O R S

## 1992-93 GIFTS (\$1-\$99)

*Continued from Page 23*

Lt. Col. Craig L. Lowman  
Mr. Edward R. Lowy  
Ms. M. A. Lublin  
Mr. and Mrs. James S. and  
Sandra J. Luihn  
Mrs. Beth W. Lunsford  
Ms. Norma E. Lurie  
Dr. Gary S. Luter  
Mr. Mark H. Lynch  
Ms. Sharon J. Lynch  
Mr. and Mrs. John M. Lynn, Jr.  
Mr. Douglas B. MacCullough  
Mr. George A. Makinen  
Mr. Mark W. Malavasic  
Mr. Victor F. Mallens  
Ms. F. Maniscalco  
Mr. Frank B. Maniscalco  
Mr. Garrett C. Marcinkowski  
Dr. Donald Marinelli  
Mr. Mark D. Markwell  
Ms. Mindy A. Marshall  
Dr. and Mrs. Donald H. Marsian  
Ms. Cathie M. Martin  
Mr. Edward C. Martin  
Ms. Nilda R. Martin  
Mr. Andrew J. Martinez  
Mr. Frank R. Martinez  
Mr. and Mrs. Wayne N. and  
Betty S. Marx  
Mr. Richard R. Massey II  
Mrs. R. Talley Masters  
Mr. and Mrs. Charles Matheny  
Dr. Richard Mathews  
Mr. and Mrs. Jerry and Linda  
Como Matisak  
Mr. Anthony J. Matteis  
Mr. Russell J. Matteson  
Maj. Durward L. Matthews  
Drs. Lee H. and Janet R.  
Matthews  
Mr. Richard D. Maun  
Mr. and Mrs. Keith J. and Judith  
R. Maurer  
Mr. William B. Mayberry  
Mr. Timothy P. Mazzei  
Mr. Mark B. Mazzone  
Rev. Harry McCartney  
Mrs. Margaret A. McCarty-Jacks  
Mrs. Laura C. McCoole  
Mrs. Selma Geopp McCord  
Ms. Lu C. McCray  
Mrs. Norma J. McCumber  
Mr. Robert J. McDonaugh  
Ms. Robin M. McEvoy  
Mrs. Fay Shaver McGaughey  
Miss Keven E. McGinn  
Ms. Shel McGuire  
Mrs. Suzanne McInerney  
Mr. and Mrs. Doug and Stephi  
McKeen  
Mrs. Louise D. McKelvy

Mr. Donald W. McKenzie  
Mr. Frederick B. McKenzie  
Col. Kenneth E. McKim  
Mr. and Mrs. R. Davidson and  
Ellen H. McLean  
Mr. and Mrs. William C. McLean  
Mr. William T. McLean  
Mr. James A. McPhail, Sr.  
Dr. William McReynolds  
Mrs. Carol M. Moses McTamney  
Mrs. Maurine Robels McTyre  
Mrs. Valerie S. Mecutchen  
Mrs. Jennie C. Megna  
Mr. James F. Mellon  
Dr. and Mrs. Michael and Tiba  
Mendelsohn  
Mr. Vincent J. Mercadante  
Mrs. Carole Mercer  
Ms. Nancy Messham  
Mr. Donald M. Metzger  
Mr. Charles J. Meyer  
Mr. and Mrs. Doug and Dixie  
Middlebrook  
Mr. R. P. Mike  
Mr. Beverly A. Mikolash  
Capt. and Mrs. David G. and  
Wendy Ann Penna Milani  
Dr. and Mrs. Don E. Miller  
Mrs. Dorothy J. Miller  
Mrs. Linda M. Miller  
Ms. Lisa Hacker Miller  
Hon. Thomas A. Miller, Sr.  
Mr. David V. Millican  
Mrs. Kimberly V. Mirabella  
Mrs. Leandra Mollanazar  
Mr. R. Perry Monastero  
Ms. Dorothy E. Moore  
Ms. Gail Dee Moore  
Mrs. Joyce L. Moore  
Mrs. Kerry A. Moore  
Mrs. Tina Sichel Morbitzer  
Mrs. Marian K. Morgan  
Dr. Donald D. Morrill  
Ms. Kimberly S. Morris  
Capt. David G. Morrow  
Ms. Suzanne Morse  
Mr. W. James Motsett, Jr.  
Mr. Kenneth W. Mulder  
Mr. Doyle E. Mullis III  
Ms. Carole W. Munger  
Dr. and Mrs. R. Jack Munyan  
Mr. Clarence L. Murphy  
Mr. Edward J. Murphy  
Mr. John D. Murphy, Jr.  
Mrs. Alice M. Murray  
Ms. Donna P. Murray

Ms. Kathy Murray  
Ensign Robert L. Murray, Jr.  
Dr. Linda L. Musante  
Muscle Therapy Center  
Mr. and Mrs. Dan and Lynn  
Carn Myers  
Mrs. Ruth Pangallo Myles  
Mrs. Adrienne Menendez  
Napoli  
Mr. James R. Nassar  
Mr. Rick Nelson  
Mr. William J. Newton  
Dr. Suzanne Nickeson  
Mr. and Mrs. Steven and Nancy  
Nicolucci  
Ms. Ida M. Nix  
Mrs. Dolores A. Noble  
Mr. Fernando A. Nolasco  
Mrs. Angela F. North  
Mr. Jeff Norton  
Mrs. Mary Ruth Noto  
Mr. and Mrs. George A. and  
Brenda J. Nousiainen  
Col. Rollie Oatley, Jr.  
Mr. Daniel J. O'Brien  
Mr. and Mrs. Joseph B. and  
Mary Anne Obusek  
Dr. Kathleen Ochshorn  
Mr. Bernard J. O'Connor  
Mrs. Martha L. Oddo  
Mr. Rudolph R. Odermatt  
Mrs. Frances Offenberg  
Ms. Sandra Rae O'Hara  
Ms. Virginia S. O'Herron  
Mrs. Rezia White Olson  
Ms. Glenda K. Ondracek  
On Your Toes  
Ms. Lori A. Oppenheim  
Mr. Joseph P. Orlando  
Mrs. Karin E. Otto  
Mrs. Hilda Fulgueira Oural  
Ms. Trudy K. Overbey  
Mr. and Mrs. Ronald Eugene  
and Mary Bunch Overlay  
Ms. Denise A. Overstreet  
Mr. Michael J. Palais  
Ms. Brenda K. Pancoast  
Mr. Robert W. Parke  
Hon. Alexander L. Paskey  
Mr. Christopher M. Pastina  
Mr. James T. Pate, Jr.  
Mr. Maurice C. Partric  
Mr. John Patten  
Ms. Cherlyn Paul  
Ms. Sandy L. Payne  
Mr. Domingo Albert Pazo, Sr.

Ms. Kathleen Taormina Peck  
Mr. and Mrs. Irvin Peckett  
Mr. Jerry Pedrero  
Mr. Arthur D. Pfeffer III  
Mrs. Katherine Fox Pekny  
Mr. Richard H. Pelham  
Mr. John W. Pelkey, Jr.  
Mr. Tim J. Pelot  
Mrs. Alice A. Perez  
Mr. Benito L. Perez  
Ms. Edith Perlo  
Ms. Noretta E. Perry  
Mr. Charles W. Peters  
Lt. Col. Robert Peters  
Capt. Harold D. Peverell  
Dr. Edward C. Pierson  
Mr. Gene E. Pike  
Mr. Dudley Pinder  
Mr. and Mrs. Robert A. and  
Joyce K. Pisano  
Ms. Cheryl L. Pittenger  
Mr. Ralph Poetsch  
Mr. Paul A. Pollak  
Mr. Matthew J. Pollock  
Mr. Christopher A. Popik  
Mrs. Nicole L. Porcelli  
Ms. Penny S. Portnoy  
Mrs. Lyne C. Posey  
Mr. Charles G. Possick  
Mr. Joseph T. Potuzak, Jr.  
Ms. Barbara K. Powell  
Mr. John Preisser  
Dr. Kristen J. Price  
Dr. W. Wayne Price  
Mr. William J. Priff  
Mr. John T. Primm  
Mrs. Peggy A. Prosser  
Mr. Tony Provenzano  
Mr. Frank H. Puglisi  
Mr. David A. Pulver  
Dr. and Mrs. Fred and Mary  
Ann Punzo  
Mrs. Susan Quackenbush  
Ms. Dorothy Gonzalez  
Quarterman  
Mr. Michael G. Quinn  
Dr. Philip F. Quinn  
Mr. Julio G. Ramirez, Jr.  
Mr. Sam Rampello  
Mrs. Edith Lesley Randolph  
Mrs. May M. Rawls  
Mrs. Villa M. Ray  
Mr. William R. Raynor  
Mrs. Jan Newbanks Reagin  
Mr. Dennis G. Rears  
Mr. Joseph R. Reed  
Mrs. Margaret Reed  
Mr. Roddy Reed and Ms.  
Elizabeth Mitchell  
Capt. Patrick R. Repka  
Ms. Martha Strickland Repogle



# C O N T R I B U T O R S

Mrs. Emmy Purcell Reynolds  
Mr. William H. Reynolds  
Mr. Joseph F. Rich  
Ms. Tammy Rich  
Mr. Fred S. Ridley  
Dr. and Mrs. Carl D. Riggs  
Ms. Kathleen Dornblasser Rioux  
Mr. John Michael Rivard  
Mrs. Sarah Agliano Rivas  
Mr. and Mrs. John C. and Carole Roberts  
Ms. Loys H. Roberts  
Ms. Wendy K. Roberts  
Dr. Harry S. Robertson  
Mrs. Hazel Ballou Roche  
Mrs. Ana E. Rochet  
Mr. Richard F. Rockwell  
Mrs. Constance Y. Roda  
Mr. Henry C. Roddenberry, Jr.  
Mr. and Mrs. Dick and Trudy Rodean  
Mr. Gilbert M. Rodriguez  
Mr. Gonzalo R. Rodriguez  
Mr. and Mrs. Juan Rodriguez  
Mr. Alfonso Romanello  
Mr. Eric J. Romanino  
Mr. and Mrs. Victor Romero  
Mr. James L. Rooney  
Mr. and Mrs. John C. Rooney  
Mr. and Mrs. Steven M. and Lisa A. Rorrer  
Mr. Frank L. Rosenblatt  
Mr. and Mrs. James C. and Ann M. Ross  
Mr. Philip S. Rosseter, Jr.  
Mr. Edward J. Rossetti  
Ms. Catherine Champlin Rowan  
Mr. Douglas B. Rowe  
Mr. and Mrs. Jack and Anne L. Rowland  
Mr. Jeffrey D. Rubel  
Mr. Ernest Rubio  
Mr. Robert Ruday  
Mrs. Jo Lynn S. Rundle  
Ms. Gloria C. Runton  
Mr. Clovis D. Rusk  
Mr. Rett Russell  
Mrs. Karen M. Russo  
Dr. Hemant Rustogi  
Mr. Lester J. Ryals  
Mr. Joseph J. Ryan  
Dr. Constance B. Rynder  
Mr. and Mrs. Steven and Andrea Saltzman  
Ms. Susan Marie Samuel  
Mr. Jose Sanchez  
Ms. Andrea Davis Sanders  
Mrs. Diane Sangalli-Bain  
Ms. Ann M. Sarginson  
Mr. Gene Sawyer  
Mr. Gerry Scara

Mr. Marc J. Scheer  
Dr. Mary Jane Schenck  
Mrs. Robin V. Schenck  
Mr. Francisco Schettini  
Dr. Raymond A. Schlueter  
Mr. Hugo Schmidt  
Mr. and Mrs. William M. and Mary Schmitz  
Mr. Casey J. Schoen  
Mr. Gary T. Schott  
Mrs. Sharon Schrader  
Mr. Jason F. Schrago  
Ms. Sandra A. Schuh  
Mr. Kurt R. Schuldes  
Mrs. Annette E. Schwab  
Mr. Albert J. Scoles  
Mrs. Edith Sconyers  
Mrs. Catharine T. Scott  
Mr. Leonard C. Scoville  
Mrs. Lisa Scozzaro  
Ms. Irene P. Seay  
Mr. Frank V. Selph, Sr.  
Dr. John N. Shadgett  
Mr. James Shelton and Ms. Jan Abell  
Mr. Ricky Lee Shelton  
Ms. Joann E. Shepard  
Mr. Hugh F. Sheppard  
Mrs. Marjorie D. Sherrill  
Mrs. Leila Clark Shewfelt  
Mrs. Mark M. Shine  
Dr. Britt Shirley  
Mrs. Alma L. Shoemaker  
Mr. B. Jeff Shugart  
Mr. Kevin Shukur  
Col. John R. Shurley III  
Ms. Katharine Weekley Sidwell  
Ms. Paula Silverstrone  
Mr. Geoffrey Simon and Ms. Andrea Graham  
Ms. Karen M. Simon  
Mr. Henry S. Simonds  
Mr. Cary R. Singletary  
Dr. D. Gregory Singleton  
Mrs. Chantima Sirodom  
Si Simonds Flower Fair  
Mr. Robert J. Siwula  
Mrs. Olga Martinez Skokan  
Mr. Alan M. Slutsky  
Mr. Donald L. Small  
Mr. James D. Smalley  
Mr. John H. Smiley, Sr.  
Ms. Anne E. Smith  
Mr. Carl U. Smith, Jr.  
Mrs. Dorinda A. Smith  
Dr. Elden T. Smith  
Mrs. Ella B. Smith  
Mrs. Juanita A. Smith  
Ms. Julie A. Smith  
Mr. Victor S. Smith  
Mrs. Joan Elizabeth Snyder

Dr. Andrew J. Solomon  
Dr. Eldra P. Brod Solomon  
Mrs. Victoria M. Spain  
Mr. Robert L. Spencer  
Mrs. Shelia G. Spicola  
Mr. Gary L. Spinelli  
Mr. and Mrs. George Spoto  
Mrs. Jimmie A. Spoto  
Mr. John F. Sprengart  
Mrs. Diana Ray Stanley  
Ms. Barbara Amy Stanton  
Mr. Charles A. Stanton  
Mr. William J. Starling  
Mr. Neil Starr  
Mr. Gerald H. Stead  
Hon. and Mrs. Ralph and Marlene Steinberg  
Ms. Hilda A. Steiner  
Mr. Gary L. Stern  
Mr. Jeffrey M. Stewart  
Maj. Paul F. Stewart  
Ms. Sue M. Stewart  
Dr. John A. Stocker  
Ms. Kathleen C. Stone  
Mr. Stephen R. Stonewell  
Mr. Robert L. Stookey  
Mr. Kenneth H. Storz  
Dr. Ralph E. Stout  
Mr. Clifford J. Stuffer  
Mrs. Samuel Sugarman  
Mr. and Mrs. George F. Sulock  
Ms. Lee Anne Suszenski  
Mr. George W. Suter  
Mr. Brian Sutton  
Mrs. Carolyn Rabun Sutton  
Mr. E. Daniel Swanson  
Ms. Marcia K. Swanson  
Mr. Stanley J. Swanson  
Mrs. Ledra Sweeney  
Mr. Ted Swigart III  
Mrs. Sunday S. Swymer  
Mr. Robert A. Sylte  
Ms. Debra A. Tamborello  
Ms. Denise A. Tamborello  
Tampa Sports Massage  
Mr. and Mrs. John H. Tanner  
Mrs. Mamie Tapp  
Mr. Louis E. Taylor  
Mr. and Mrs. Max and Jean Taylor  
Ms. Phyllis M. Tellor  
Mrs. Melba R. Terrell  
Mr. and Mrs. Robert J. and Elsa G. Terri  
Mr. and Mrs. Joe Testa-Secca  
Mrs. Ella L. Thomas  
Mrs. June J. Thomas  
Mr. Mark D. Tibbs  
Times Publishing Company  
Mrs. Rachelle Tokar  
Mr. Peter J. Tomaino

Dr. Emilio Toro  
Mr. Lewis W. Tougaw  
Mr. and Mrs. Jim J. Tozzi  
Mr. John L. Traina  
Msgt. James A. Troche  
Ms. Mary Ann Trujillo  
Mrs. Shirley M. Trzaska  
Ms. Maxine T. Tucker  
Mr. Douglas A. Tulp  
Mrs. Peggyann Ferugia Tuma  
Mr. Kevin A. Turner  
Mrs. Martha Holden Turner  
Ms. Roberta Kidd Turner  
Ms. Karen S. Ugan  
Mrs. Charlotte Eden Umhotz  
U.S.A. Group, Inc.  
University of Tampa Athletic Department  
Mr. Frank D. Uvanni  
Mrs. Jeanette Deguzman Valenti  
Ms. Barbara A. Vallin  
Mrs. Dorothy P. Van Balen  
Capt. Anthony R. Vanchieri  
Dr. Albert C. Van Dusen  
Mr. Edward R. Van Horn  
Dr. Kathryn VanSpanckeren and Dr. Stephen Breslow  
Mr. Julius C. Vaughn III  
Lt. Col. Nicio Vega, Jr.  
Mr. James R. Verkler  
Mrs. Tia A. Vickers  
Mr. and Mrs. Everett J. and Heather Vitali  
Mrs. Denise A. Vlahov  
Ms. Patsy A. Voigtmann  
Mr. Elliott S. Volaski  
Mr. Donald S. Vowell  
Mrs. Marci Vucich  
Mr. Joseph L. Wachter  
Mrs. Jean Halpin Waddle  
Lt. Edward S. Wagner, Jr.  
Ms. Claudia Pontecorvo Waldron  
Mrs. Roberta Graham Walker  
Mr. Scot E. Walker  
Mr. William F. Walker  
Mrs. Kathryn G. Wallace  
Mrs. Medora F. Wallace  
Dr. Ellen D. Baker Wallen  
Dr. Colleen Podolsky Ward  
Mr. Robert D. Warren  
Mr. Allan P. Waters  
Mr. and Mrs. Wendell D. Waters  
Mrs. Betty B. Watson  
Mr. W. Bryan Webb  
Mr. Raymond C. Weber  
Mrs. Tracy Weixelbaum  
Mr. William W. Welborn  
Mr. Jeffrey L. Wells

*Continued on Page 26 . . .*



# C O N T R I B U T O R S

Mr. Michael E. Wells  
Maj. and Mrs. Gordon P. Wesley  
Dr. Charles R. West, Jr.  
Mr. and Mrs. Edward H. West  
Ms. Melinda West and Mr. Marshall Lochridge  
Mr. Steven Weichselbaum West  
Mr. Lawrence Pinco Westfield  
Mr. and Mrs. Malcolm Westley  
Mr. Jackson B. Wharton  
Ms. Jacqueline Whatley  
Mr. Daniel R. White  
Ms. Michelle White

## 1992-93 GIFTS (\$1-\$99)

*Continued from Page 25*

Ms. Carol J. Whiteside  
Mr. W. Weyman Whitlock, Jr.  
Mrs. Jessica L. Whitman  
Mrs. Kathleen Wiedemer  
Mr. William D. Wieland  
Lt. Col. Richard A. Wiggins  
Ms. Patricia Livingston Wilbanks  
Mr. and Mrs. Paul and Pat Fenda Wilborn  
Dr. and Mrs. Edwin F. Wilde  
Mr. James Wilfong  
Mrs. Frances Williams  
Mr. Herbert J. Williams III  
Mr. Morris S. Willner  
Mrs. Jeanette Fernandez Wilson  
Ms. Jeanne Wiltse-Royston  
Mrs. Sandra Winegar  
Dr. and Mrs. Bruce C. Winkler

Dr. Elizabeth Winston  
Mr. Charles E. Wolfe  
Ms. Lynona D. Woodbury  
Mr. Enrique A. Woodroffe  
Mr. Brian S. Wormser  
Mr. John B. Wuertz  
Mr. Andre R. Wyatt  
Mrs. Susan Gibson Wynn  
Mrs. Cynthia E. Xenick  
Mr. Roy N. Young  
Mr. James L. Zachary  
Mr. Frank R. Zedar  
Drs. Carl and Paula S. Zielonka  
Mr. Joseph L. Zolnowsky

## IN MEMORIAM

JOHN F. ALVAREZ  
FRED W. ANDERSON  
RALPH AYE  
DR. HOWARD G. BAKER  
VALERIE M. BROWN  
JUDGE WALTER N. BURNSIDE, JR.  
JOE CONZONERI  
SAM F. DAVIS  
OSWALD DELGADO  
GINNY ANN DELO

J. REX FARRIOR, SR.  
JOAN S. FORD  
FRANK FRANKLAND  
JOE F. GRABLE  
LILY F. GUAGLIARDO  
WILLIAM E. HENSON, JR.  
SARAH ALICE HOLT  
VIRGINIA DIXIE HURLEY  
NEVILLE ILKIN  
SOPHIE KURTZ

FRED D. LEAREY  
MARY LEAREY  
DR. HERBERT B. LOTT  
RONALD PETER MATHEWS  
JULIETTE MCKAY  
ANNE MARIE MEEGAN  
CRAIL A. MERRINER  
CONNIE NEWTON  
CLYDE PERRY  
DAVID PINHOLSTER  
MILFORD RHINES

M. RHODES  
MARIE HERMANN ROBBINS  
HERBERT E. ROBSON  
SUE SUE SHAW  
JEAN STEINMETZ  
LORENNE TURNER  
ARTHUR WIGGINS  
WALTER C. WILSON  
HENRY L. YOUNG  
LUIS T. ZENDEGUI  
DR. LESTER ZIPSER

## ENDOWED SCHOLARSHIPS

**T**he University of Tampa gratefully acknowledges the individuals, corporations, and foundations who have established endowed scholarships and have so generously been instrumental in securing the University's future.

Jane and Sid Allen Athletic Endowed Scholarship  
Mrs. Alfredo Antonini Music Award Endowment  
Edna McDuffie Barritt Endowed Scholarship  
Lillian K. Bassler Endowed Scholarship  
William and Sarah Brorein Endowed Scholarship  
William J. Carter Endowed Scholarship  
W. Hampton Copeland, Jr. Endowed Scholarship  
A. L. Cuesta, Jr. Endowed Scholarship  
Dr. Martin S. Denoff Volunteer Award  
Julie I. Dickenson Endowed Scholarship  
Darin Donahue Endowed Scholarship  
G. Paul Dorfuller Art Endowed Scholarship

Jack Eckerd Endowed Scholarship  
Sam and Julia Flom Nursing Endowed Scholarship  
Sherman B. Forbes Endowed Scholarship  
J. A. Griffin Endowed Scholarship  
Nash Higgins "Rat Hole Gang" Endowed Scholarship  
Jones Intercable Tampa Trust Endowed Scholarship  
Helen Drysdale Jones Endowed Scholarship  
Kessler-Wittcoff Endowed Scholarship  
Peter O. and Girlie Knight Endowed Scholarship  
Karl R. Kreher Endowed Scholarship  
Richard N. Lane, Jr. Endowed Scholarship  
Dr. C. Herbert Laub History Award Endowment  
Marian E. Learey Memorial Endowed Scholarship  
Professor Emeritus John H. Lindenmeyer Political Science Endowed Scholarship  
R. A. Little Endowed Scholarship  
Lowry Freedom Award Endowment  
K. I. McKay Endowed Scholarship  
James D. Milligan Endowed Scholarship

Ellwood C. Nance Endowed Scholarship  
Colonel George J. Oden Endowed Scholarship  
Paul O'Donnell Endowed Scholarship  
Lisa Pauchey Memorial Endowed Scholarship  
Art Pepin Golf Award Endowed Scholarship  
The Polish Heritage Foundation Endowed Scholarship  
Austin and Arline Rising Endowed Scholarship  
William J. Sammis Endowed Scholarship  
T. Terrell and Neva S. Sessums Endowed Scholarship  
John E. Sheridan Continuing Education Endowed Scholarship  
Freddie Soloman Endowed Scholarship  
Dr. William D. Stewart Memorial Scholarship  
Lloyd G. and Jeannette C. Tingwall Endowed Scholarship  
Frank Traynor Endowed Scholarship  
J. A. Waterman Endowed Scholarship  
Morris Edward White Memorial Endowed Scholarship



# C O N T R I B U T O R S

## 1992-93 ALUMNI DONORS

'33

William A. Gillen

'35

Anthony J. Grimaldi  
Carlisle Hutchinson  
Harry McCartney  
Valerie S. Mecutchen  
Edith Sconyers  
John L. Triana  
Dorothy P. Van Balen

'36

William C. Buchanan  
Domenic V. Guinta  
John H. Smiley, Sr.  
Victoria M. Spain  
George Spoto

'37

Paul B. Edwards  
Dorothy (Talbot) Glover  
Marjorie D. Sherrill  
Leila Clark Shewfelt  
Albert C. Van Dusen

'38

Leah M. Hunter Hackney  
Jeanie (Trice) Hall  
L. N. Ingram, Jr.  
F. Bertram Johnston  
Lois McMormick  
Jane (Pearson) Setzer  
Mark M. Shine

'39

Braulio Alonso  
Stella (Rogers) Carr  
Carl H. Dahm  
Rev. Oswald Delgado  
William Dmytryk  
H. Hampton Dunn  
Truman Hunter  
Frances E. Keating  
Mary (Miyares) Keener  
Grace (Bruton) Kelly  
Cecil B. Reed  
Margaret Reed  
Kenneth J. Reid  
Frances M. Waters  
Wendell D. Waters  
Alvin P. Yorkunas  
Mary Ann (Sampey)  
Yorkunas

'40

Margaret (Neef) Agnew  
George E. Edmondson, Jr.  
Eustasio Fernandez

Martha A. Franco  
Kitty Anne Gilmer  
Frances Hornsby Graf  
Cyril V. Handley  
Linus Hewit  
Thelma M. Horne  
William H. Horne, Jr.  
Florence Rogers Hurn  
Robert H. Kasriel  
Stephen J. Krist  
Col. Wilmot E. Y. Paxton  
Dale M. Petersen  
Harry S. Robertson  
John H. Sherman, Jr.  
Ella B. Smith  
Jean Halpin Waddle

'41

Mark John Ball  
Patricia Benz  
Anna (Lazzara) Duncan  
V. Olivia Georgius  
John S. Goodson, Jr.  
Frances Sessions  
Hoffmann  
Frank P. Maniscalco  
Margaret R. Ragg  
Alton L. Rine  
Celeste Whitehead

'42

Gloria Gutierrez  
Alderman  
Phyllis (Flanagan) Baker  
Allen Benz  
Sam G. Bessis  
Earl D. Caton  
Mary Eleanor (Mercer)  
Cline  
John C. Dromey  
Lee Duncan, Jr.  
Sarah B. Edwards  
Jose I. Gonzalez  
Edward I. Howell  
Tom J. Johnson, Jr.  
Louise D. McKelvy  
Emory Allen Mikell  
Joe D. Mills  
William W. Read  
Lester J. Ryals  
Olga (Martinez) Skokan  
Mary Jones Tylander  
James W. Whitehead

'43

Rudolph L. Barker  
Ruth (Morgan) Caldwell  
Elsie L. Caton  
Dorothy (Thonnesen)  
Harper

Jane Hewit  
Norman G. Light  
Kathryn Weed

'44

M. Haze Carleton  
Elizabeth Holton Enlow  
Margie (Casal) Gonzalez  
Miriam Davis Green  
Margaret B. Harris  
Wanda (Waters) Howell  
Mabel L. Malsbary  
Maurine (Robles) McTyre  
Hilda Bethea Mills  
Gloria C. Runton  
Elizabeth H. Tanner  
John H. Tanner  
Teo Zacchini

'45

Eleanor A. Fisk  
Reonthia C. Hutchinson  
Mary Catherine Manning  
Dorothy G. Read

'46

Alice Champion  
Betty Cumbie DiBona  
Robert O. Hach  
Benito L. Perez  
Jo Lynn S. Rundle

'47

Alfred S. Austin  
Mary Cleotelis  
Bruce M. Klay  
Dorothy Gonzalez  
Quarterman  
Kathryn G. Wallace

'48

Mary (Licalsi) Cagnina  
Otto L. Dale  
Gloria R. Ferlita  
Jennie (Cusmano)  
Locicero  
May M. Rawls

'49

Adelfa (Diaz) Alonso  
W. Kendall Baker  
Madelyn Grace Boyd  
Donald R. Britt  
Margaret Davis  
Claire (VanBreemen)  
Downes  
Janice Babe Dragone  
Mary Virginia Handley  
Harry M. Hobbs

Patricia (Scott) Jackson  
Benjamin W. Johnson  
Katie Keene  
William J. Priff

'50

Gregory A. Cleotelis  
Norman D. Cramer  
Bessie Juanita (Benton)  
Dean  
Betty M. Dumas  
Renee R. Fisher  
Louise Clayton Giargiari  
Anthony S. Gonzalez  
Gerard S. Jackson  
Fred H. Kenfield  
Andrew J. Martinez  
Joyce S. Plumley  
John N. Shadgett  
Robert W. Turner  
Henry P. Zaranski

'51

Bruce W. Adams  
Carol A. Barnes  
Rose (Berio) Barus  
Bernard I. Cohen  
Paul W. Danahy, Jr.  
Carroll E. Fogal  
Charles B. Jones  
Perry O. Keene, Jr.  
Russell J. Matteson  
James A. McPhail, Sr.  
A. Douglas Middlebrook, Jr.  
Frank H. Puglisi  
Alfonso Romanello  
Robert E. Scott  
Frank V. Selph, Sr.

'52

William J. Antonini  
Betty Johnson Becker  
Wallace W. Blackburn  
Shirley Rector Brown  
Bertha Bullard  
Robert E. Coover  
Georgia (Reed) Danahy  
Mary Sheridan Easton  
Kenneth W. Mulder  
Philip S. Rosseter, Jr.  
Ernest Rubio  
Leonard C. Scoville  
Frank S. Sinkwich  
Juanita A. Smith

'53

David M. Barksdale  
Richard H. Gruber  
John E. Haefeli

Harvey R. Reilich  
Ralph Steinberg  
Melba R. Terrell

'54

Rubin Ares  
William W. Bennett, Jr.  
Marien Kanne Christensen  
L. W. Cooper  
Louise Twyman Cullen  
Mary Ruth (Duncan)  
Moto  
Tony Provenzano  
Katherine Weekley  
Sidwell  
Robert L. Spencer

'55

Robert E. Beach  
Charles E. Fisher, Sr.  
Dean Goldsmith  
Andrew J. Henry  
John M. Lynn, Jr.  
E. A. Peck  
Harold D. Peverell  
Roberta Graham Walker  
Joseph J. Zalupski

'56

Arthur E. Blau  
James R. Crosby  
Christian W. Felentzer  
Jean (Bonhan) Johnston  
Charles J. Meyer  
Kenneth R. Nuznoff  
Fred P. Pancoast  
Constance Felicione  
Segundo  
Ernest C. Segundo  
W. Bryan Webb  
Jackson B. Wharton  
Ted Williams  
Vilma Zalupski

'57

Rita Jackson Burysek  
Austin R. Curry  
Louise W. Erk  
G. B. Henry  
Etelvina A. Hutchins  
Angela (Alvarez) Konen  
Vincent J. Mercadante  
Nicio Vega, Jr.  
John B. Wuertz  
Manuel J. Yglesias

*Continued on Page 28 . . .*



# C O N T R I B U T O R S

## '58

Ruth Bragg  
Harry Y. Britton  
Ronald L. Cinnamon  
Andrew Conda  
Dan M. Costa  
James M. Eikeland  
Claire Charlton Hoel  
James M. Kelly  
Phyllis Hagin King  
Richard H. Lee, Jr.  
Lionel O. Leon  
Domingo Albert Pazo, Sr.  
Coleman J. Shirley  
Marie I. Swingley  
Charlotte Eden Umholtz  
Glenn Waddell

## '59

George L. Blanco  
Bernardine (Becker) Butler  
Joseph A. Cacciatore  
Robert Florio  
Ruth H. Haager  
Samuel M. Hubbell  
Geraldine (Law) Hynes  
Matt M. Jetton  
William D. Leith  
Thomas A. Miller, Sr.

## '60

Patrick Maynard Allen  
Howard P. Best, Jr.  
Wade G. Birch  
Gerald "Jerry" Bobier  
James Lee Bonnette  
Gabriel C. Fernandez  
Lawrence T. Fitzgerald  
Sam Giunta  
John M. Harrison III  
Elaine (Becker) Jett  
Bill Katsaras  
George A. Makinen  
William T. McLean  
Alice A. Perez  
Barbara Reischmann, M.D.  
Gilbert M. Rodriguez  
Sharon Schrader  
Robert J. Siwula  
Diana (Ray) Stanley  
Ralph E. Stout  
Richard C. Swirbul  
Rosalie C. Testa-Secca  
Lewis W. Tougaw  
Andre R. Wyatt

## '61

Frank L. Brandon, Jr.  
Robert A. Burwell  
Joseph V. Fedale  
Willard Fein  
Robert J. Fox

Ralph M. Griffin, Jr.  
S. Ross Jett  
Dorothy (Westberry)  
Johnson  
Joseph H. Kerr  
S. Hansen Long  
Guy W. Otto  
Sylvia Rivero Peters  
Dennis F. Pupello  
Jan Newbanks Reagin  
Eldra (Brod) Solomon, Ph.D.  
Robert L. Stookey  
Stanley J. Swanson  
Joe Testa-Secca  
Jeanne Wiltse-Royston

## '62

K. Nelson Butler  
Mary Esther V. Champion  
Axel W. Claesges  
William R. Conover III  
Rose C. Diaz  
Gilmore A. Dominguez  
Edith Elozory Gonzalez  
Marian Pedersen  
Goodbread  
Giacomo S. Guggino  
John W. Hanna, Jr.  
Julie C. Hawks  
Gerald W. Herzog  
James J. Martindale  
Selma Goepp McCord  
Tina (Sichel) Morbitzer  
Suzanne Morse  
Joseph B. Obusek  
Mary Bunch Overly  
Charles G. Possick  
John T. Primm  
Jose Sanchez  
Victor S. Smith  
Marlene Steinberg  
Mary C. Sant Cruz Trout  
Maxine T. Tucker  
Roberta Kidd Turner  
Jeanette Fernandez Wilson

## '63

Joseph R. Adams, Sr.  
Patricia Alchediak  
Carl Roy Anderson  
Joyce (Boling)  
Bourgholtzer  
Merry K. Chinnock  
Mack T. Christian  
Nannie G. Christian  
George A. Clement  
Julaine Condon  
John J. Daoud  
Flo B. Davis  
William H. DeCelle

## 1992-93 ALUMNI GIFTS

*Continued from Page 27*

Walter R. Hudson  
Jennie (Campisi) Megna  
Robert D. Mohr  
Shirley Piper Myers  
Sally (Giroir) Noller  
Brenda J. (Baggett)  
Nousiainen  
George A. Nousiainen  
Mary Anne (Fox) Obusek  
Samuel J. Rampello  
Joan Elizabeth Snyder  
Gerald H. Stead  
Harry R. Trout, Jr.  
Jeanette Deguzman  
Valenti  
Jessica L. Whitman  
Cynthia E. Xenick

## '64

William Benjamin Boyd  
Marcus B. Crisman  
Lorraine D. Datello  
Jane Staples Daugherty  
Andrew F. DeMeyer  
Geoffrey R. Garson  
John E. Horst  
Nicholas G. Maragos  
W. James Motsett, Jr.  
Joyce K. Pisano  
Robert A. Pisano  
William A. Sandman  
Luciano A. Santa Cruz  
Catharine (Tucker) Scott  
James D. Smalley  
Robert A. Sylte  
Joseph L. Wachter

## '65

Nancy Alchediak  
Jean Lackovic Amuso  
David W. Baker  
Raymond Bourgholtzer  
Leonard J. Cimador  
Alfonso A. Dato  
Gilbert DeMeza  
Lucille Fleet Ford  
Luis Garcia  
Gerard Kutzman  
Alfred C. Laubsch  
Jean S. Law  
Richard R. Massey II  
Durward L. Matthews  
Fay Shaver McGaughey  
Clarence L. Murphy  
Dudley Pinder  
Jerome D. Quinn  
Col. John R. Shirley III  
Donald L. Small

Kenneth H. Storz  
Wilanne (Starling) Stowe  
Clifford J. Stuffer  
Peggyann Ferugia Tuma  
Everett J. Vitali  
Robert D. Warren  
Lawrence Pinco Westfield

## '66

Leonard N. Altamura  
Walter Burkett  
Wayne Byrne  
Norma Caltagirone  
Estela G. Cannella  
Frank G. Cisneros  
Dudley W. Davis  
Stephen P. Hess  
Janet R. Matthews  
Joseph P. Orlando  
Gene Sawyer  
Derek A. Taylor  
Leslie Taylor  
Mary Ann Ward  
Jacqueline (Beltram)  
Whatley  
John V. Whitbeck

## '67

Robert H. Ashmead  
Joel P. Braverman  
Donald N. Esposito  
Richard B. Faunce  
Daisy Bowman Fisher  
Edward C. Martin  
Lee H. Matthews  
Suzanne Townsend  
McInerney  
Robert F. Meredith  
Cheryl (Ellis)  
Middlebrooks  
Adrieene Menendez  
Napoli  
Eric (Rick) Nelson  
Kathleen Dornblaser  
Rioux  
Hazel Ballou Roche  
Mrs. Jimmie A. Spoto  
Charles A. Stanton  
James V. Stowe, Jr.  
Robert J. Terri  
Marilyn J. Westly

## '68

Margaret J. Bator  
Edgar B. Bradley, Jr.  
Dean C. Drapin  
Gerald W. Eppley  
Thomas M. Evans  
Alphonse N. Falco, Jr.  
Seth D. Halpern

Dolores A. Hoffman  
Norma J. McCumber  
Frederick C. Meyers  
Paul N. Minichiello, Sr.  
Marian (Moore) Morgan  
Hilda (Fulgueira) Oural  
Andrew L. Pink  
Michael Taylor Rao  
Gary L. Rapp  
Henry C. Roddenberry, Jr.  
Jack Rodriguez  
Cary R. Singletary  
Joseph A. Spoto  
Elsa G. Terri  
Peter J. Tomaino  
Edward R. Van Horn  
Allan P. Waters  
William W. Welborn  
Patricia Livingston  
Wilbanks  
Morris S. Willner

## '69

Linda Sue Ackert  
Richard C. Ackert  
Robert Addems  
Ron Brown  
Richard R. Caravana  
Robert J. Cook  
Cheryl Austin  
Cunningham  
Thomas E. Cunningham, Jr.  
Amy J. Doktor  
John Russell Edge  
Daniel F. Francabandiero  
Margery (Oleskie) Hayes  
T. Wayne Hayes  
Jack Kaplan  
Maureen Kearney  
Clifford W. Korn, Jr.  
Edward C. Levine  
Robert A. Lewandowski  
Theodore R. Liautaud  
Francisco R. Martinez  
H. James Meginley  
Hugh F. Sheppard  
Henry S. Simonds  
Robert L. Smith  
E. Daniel Swanson  
Phyllis M. Tellor  
James A. Troche  
Martha Holden Turner  
Herbert J. Williams III

## '70

Robert L. Blanchard  
Connie (Ohlman) Bradish  
Orville Lee Brock  
Michael C. Cartwright  
Anthony Cutrono, Jr.  
William H. Daniels  
Michael J. Davies  
Richard B. D'Louhy



# C O N T R I B U T O R S

Larry L. Elliston  
Wilfred Gaier  
Joan Kelly Garrison  
Pat Gillette  
Richard M. Griffith  
Charles W. Haldane  
John D. Hassett  
Gene King  
Jack King  
Cathie M. Martin  
David V. Millican  
William J. Newton  
Kathleen Taormina Peck  
Fred E. Pollock  
Roger Sofer  
Hilda A. Steiner  
Kathleen C. Stone  
Louis E. Taylor  
William F. Walker

## '71

Christine Klopfer Angel  
Miller B. Arbutine  
Robert C. Carlen, Jr.  
Richard T. Clausi  
Marian DiMarco Cleland  
Mary (Morrison)  
Cunningham  
Andrew S. Dulina III  
John H. Franks  
Glenn M. Fulgueira  
Martin J. Gall  
Robley Hunt Garrigan  
Marilyn (Menko) Hamlin  
Casimir J. Harazda  
Gregory F. Howell  
Kenneth L. Lee  
Scott K. Mahlum  
Garrett C. Marcinkowski  
William B. Martin  
R. P. Mike  
Rudolph R. Odermatt  
Barbara K. Powell  
Susan (Scolnick)  
Quackenbush  
Joann E. Shepard  
Ruth Wernick  
Steven Weichselbaum  
West  
Brian S. Wormser

## '72

Harry E. Allen  
Martin Andersen, Jr.  
Thomas R. Berg  
Lee Borowsky  
Marvin W. Campbell  
Peggy A. Cooper  
Elizabeth Harrison Engel  
Robert A. Fimbel  
Gerard J. Henkel  
John B. Hurd, Jr.  
Irard E. Jacobs  
Francis E. Johnson

Arthur A. Jones  
Vernon R. Jones  
David E. Lewis  
Nancy Taylor Lloyd  
Michael J. Palais  
Charles W. Peters  
William R. Raynor  
Gonzalo R. Rodriguez  
Samuel C. Russell  
Alan M. Slutsky  
Charles C. Smith  
Rick Thomas  
James von Gartzen  
Claudia Pontecorvo  
Waldron

## '73

Brigitte Hinz Andersen  
Edward M. Baldwin, Jr.  
Kenneth G. Bowen  
Charles E. Bowers  
Doug Brooks  
Joseph Di Stefano  
Robert L. Fish  
Peter L. Getzler  
Anthony J. Matteis  
Linda M. Miller  
Ronald Eugene Overley  
John Patten  
Michael R. Pender, Jr.  
John V. Pietrucha  
Lyne C. Posey  
Annette (Bayliss) Schwab  
Gary L. Spinelli  
George F. Sulock  
Douglas A. Tulp  
Frank R. Zedar

## '74

Michelle (Lepore) Barry  
Clementina V. Bode  
David R. Bruss  
I. Michael Cohen  
Elwyn L. Cranford, Jr.  
Jeanne Ryan Furcron  
Wyckliffe Furcron  
Joan W. Griggs  
C. Wayne Guest  
James H. Hockenberger  
Ralph D. Klein  
Thomas F. Leffler  
William R. Lorton  
Stephen Magriby  
Robert C. McGirr  
Frederick B. McKenzie  
Francis R. Morse  
James R. Nassar  
Robert W. Parke  
Arthur D. Pfeffer III  
Douglas B. Rowe  
Gary T. Schott  
Paula Silvestrone  
Chantima (Prapapant)  
Sirodom

Richard A. Wiggins  
Harold W. Youmans

## '75

Thomas J. Cindric  
W. Karl Funds  
Eva Maggio Gabriel  
Clifford E. Granger  
Jerrold W. Gregory  
Valerie Smith Hirvela  
Vincent A. Hoover  
David B. Kerr  
Anthony P. Kopecky  
Samuel Lasky  
Rose-Marie L. Magriby  
Donald Marinelli  
Kenneth E. McKim  
William D. Miller  
Sarah (Aglano) Rivas  
Paul F. Stewart  
Pamela (Mason) Sulock  
Shirley M. Trzaska

## '76

Charles S. Abell  
Martha Berdeal  
Robert Birrenkott  
William W. Blankenship  
Philip C. Bragg  
Virginia M. Covington  
Louis R. Diaz  
Mark F. Douglas  
Leonard T. Hale  
Ann J. Hilliard  
Paul R. Lang  
M. S. Mandell  
Timothy P. Mazzei  
Robert J. McDonaugh  
Daniel J. O'Brien  
Herbert P. Ohm  
Jerry Pedrero  
William M. Rea  
Richard F. Rockwell  
Albert J. Scoles  
Anne E. Smith  
Gary L. Stern  
Raymond C. Weber  
Gordon P. Wesley  
Daniel R. White

## '77

Jon C. Arnold  
Imogene H. Braswell  
Jeanne Chitester-Stinger  
Debbie Elliott  
Howard A. Fineman  
Herman O. Freeman  
Gerald L. Gillis  
Lila L. Johnson-Thomas  
Franklin R. Kimbro  
Charles M. Linville  
Norma E. Lurie  
Marc W. Malavasic

Jerome Matisak  
Linda Como Matisak  
Lueretha C. McCray  
Nancy (Rubenstein)  
Messham  
Edward J. Murphy  
Rezia (White) Olson  
Gene E. Pike  
David A. Pulver  
Villa M. Ray  
George W. Suter  
Jerome R. Taylor  
Frank D. Uvanni  
Elliott S. Volaski  
Susan Gibson Wynn  
Josephine Yglesias

## '78

Thomas A.  
Bernadzikowski  
James P. Canavaggio  
Xavier F. Cannella, Jr.  
Paul S. Charpentier  
LaRone T. Davis  
David W. Devine  
Alfred R. Dickey, Jr.  
Andrew P. Dwork  
William F. Hawk  
Sylvia A. Henry  
Virginia V. Johnston  
Connie Kone  
Stanley S. Kraus  
William C. Mangen  
Ida M. Nix  
Tim J. Pelot  
Eric J. Romanino  
James L. Rooney  
Edward J. Rossetti  
Clovis D. Rusk  
Carl Smith, Jr.  
Patsy A. Voigtman

## '79

Lael Blackstone  
William J. Counihan III  
Ronald L. Dennison  
Gini L. England  
Garry A. Flowers  
Bob Gelzheiser  
Bruce K. Goldberg  
David A. Kinser  
Michael R. Lawrence  
Harold C. Lewis  
Mindy A. Marshall  
Deborah B. Miller  
James T. Pate, Jr.  
Martha Strickland  
Replogle  
Lillian Simon  
Patrick V. Simon  
Edward S. Wagner, Jr.  
Betty B. Watson  
William D. Wieland

Diana L. Winoker  
Charles E. Wolfe

## '80

Dale W. Allen, Jr.  
Marshall Evan Ames  
Robert F. Cascella  
Wesley J. Champney  
Karen Brooke Fenton  
Gonzalo C. Garcia  
Mary Jane Jeffery  
Roy C. Kiser  
Michael C. Lauder  
Edward R. Lowy  
Mark H. Lynch  
Victor F. Mallens  
Margaret A. McCarty-Jacks  
Carole W. Munger  
James P. O'Drobinak  
Katherine Fox Pekny  
David R. Schulz  
B. Jeff Shugart  
Anthony R. Vanchieri

## '81

Joseph Bonacci  
Robert A. Bourke, CPA  
Larry W. Bryant  
Michael J. Cammick  
Eveline P. Dunning  
Margaret B. Finch-Arietta  
Leroy W. Hansen  
Gail (Andrews) Landers  
Frederick G. Little  
Gail M. Llorca  
Angela F. North  
Christopher A. Popik  
Kristen J. Price  
Joseph R. Reed  
Donald L. Robertson  
Carl David Ross  
James M. Shattuck  
James W. Vondrak  
Colleen Podolsky Ward

## '82

Edda Zupovitz Cammick  
Ann Marie Cascella  
Lisa P. Champney  
Francis L. Corden, Jr.  
Marietta B. Crosby  
John E. Crumbley  
James A. Diaz  
Joyce M. Fernandez  
Elizabeth A. Gavula  
William G. Giesecking, Jr.  
Ralph L. Gonzalez  
Amy (Hill) Hearth  
William C. Heithaus

*Continued on Page 30 . . .*



# C O N T R I B U T O R S

## 1992-93 ALUMNI GIFTS

Aaron W. Hendry  
William B. Hungerford, Jr.  
Shirley Knapp  
Todd V. Larson  
John P. Lowth III  
Sharon J. Lynch  
Michael J. Macaluso  
George McLaughlin, Jr.  
James R. Mellaci  
Nicholas F. Mooney  
John D. Murphy, Jr.  
Donald M. Nairne  
Michael G. Quinn  
Emmy (Purcell) Reynolds  
Joseph F. Rich  
John C. Roberts  
Diane Sangalli-Bain  
Marc J. Scheer  
Bethany C. Simmons  
Dorinda A. Smith  
Melodee McThenia Suarez  
James R. Verkler

### '83

Mark W. Arrowood  
Nancy J. Baird  
William Preston Billig  
Rebecca (Schuchardt)  
Blackwell  
F. Chris Catanach  
James J. Gabriel  
Anthony V. Greco  
Judith Gude  
Anne T. Joyce  
Mary J. King  
Lisa Rosen Lievense  
Lisa Hacker Miller  
Robert J. Muir  
Ruth (Pangallo) Myles  
Mark Novak  
Martha L. Oddo  
Cherlyn Paul  
Paul A. Pollak  
Dennis G. Rears  
John Michael Rivard  
Lisa A. Rorrer  
Steven M. Rorrer  
Louis H. Sanchez  
Ricky Lee Shelton  
Jeremy S. Tyree  
Martha G. Vucich

### '84

Gary Baker  
Rock A. Blanco  
Kevin A. Cameron  
Vivian L. Coates  
Kristin K. Cox  
Myrna De Jesus Flynn  
Keith R. Erickson  
Wanda Carolyn Frenzel  
Paul M. Githens  
Paul M. Gouin  
Therese J. LaDouceur

Mark B. Mazzone  
Nancy Nicolucci  
Denise A. Overstreet  
Christopher M. Pastina  
Jeffrey D. Rubel  
Anita K. Scharf  
Patrick O. Schneider  
Irene P. Seay  
Smitty Dorene L. Smith  
Ellen (Baker) Wallen  
Tracy Weixelbaum  
Jeffrey L. Wells  
Carol J. Whiteside

### '85

Miguel Acosta  
Jack A. Arnold  
Lorelei F. Bolze  
Dennis J. Breen  
Linda S. Cameron  
David F. Cannon  
Mercella I. Daniels  
Cathleen (Moran) Elisha  
Maria (Derencin) Gallina  
Brian L. Groene  
Mark M. Kane  
Jitka (Kocourek)  
Kavanaugh  
Joseph H. Kelly, Jr.  
Judy Kopitnik  
Anne M. Kutchmire  
Carol M. Moses  
McTamney  
Wendy Ann Penna Milani  
Sandy L. Payne, CPA  
Ralph Poetsch  
Peggy A. Prosser  
Lisa Scozzaro  
A. Tracey Tucker

### '86

Rebecca L. Abdoney  
Jill (Henry) Aufiero  
Judith E. Aust  
Heather A. Bailey  
Scott Blackwell  
James P. Bradley  
Jay M. Chrobak  
Barry W. Curewitz  
Chris B. DeBellevue  
John T. Duff  
Erica L. Edwards  
Lillian G. Ettinger  
Marco J. Feola, Jr.  
Armando H. Godinez  
Chantelle D. Groene  
John K. Henne  
Helen T. Kerr  
Tasha H. Lohman  
James S. Luihn  
Shel McGuire

*Continued from Page 29*

Carole (Ehrman) Mercer  
David G. Milani  
Jennifer G. Morris  
Kathleen M. Murray  
Robert L. Murray, Jr.  
Lucile (Lawson) Pignataro  
Thomas A. Pignataro  
Neil Starr  
Carolyn (Rabun) Sutton  
Edmund K. Swigart III  
Rick Sylvester  
Connie M. Wilde  
Dr. Edwin F. Wilde

### '87

Ernest A. Alonso  
John M. Barrett  
Jerry O. Batley, Jr.  
Elizabeth L. Boudreau  
Kevin E. Brown  
David M. Chatfield  
Gael M. Christie  
David A. Cowdrick  
Sharon S. Cross  
Lisa (Hoernlein)  
Culberson

Pamela E. Currie  
Ann (Watson) DeBellevue  
Kimberly F. DeShong  
Penelope F. Dickos  
Kathleen Mary Egan  
Brenda Foody  
Christine B. Gagnon  
William W. Godfrey  
Charlotte H. Grant  
Marcus W. Greene  
Gloria J. Griffith  
Matthew M. Haley IV  
Dan S. Ho  
Edward A. Johnson  
Mark F. Lapp  
C. Scott Leonard  
David J. LoNigro  
Ellen Batsavage LoNigro  
Donald W. McKenzie  
Lesli Kelsey McQueeney  
David G. Morrow  
William M. Mulholland  
Dolores A. Noble  
Edward C. Pierson  
Joseph T. Potuzak, Jr.  
L. David Richardson  
Andrea (Katz) Saltzman  
Susan Marie (Teague)  
Samuel  
Gerald R. Scara  
Shelia G. Spicola  
Barbara Amy Stanton

### '88

Kimberly Patterson  
Ainsworth  
Donna (Niedens)  
Alexander  
Renee Brown  
Robert C. Castle  
James M. Crumpton  
Sandra A. Cruse  
Philippe G. Hills  
Lynette M. Hirth  
Francis E. Hurn  
Craig L. Lowman  
Doyle E. Mullis III  
Steven Nicolucci  
Lelo Prado, Jr.  
Lorenda Pucci-Rey  
Patrick R. Repka  
John C. Rooney  
Karen M. Russo  
Casey J. Schoen  
Katherine M. Smith  
Jeffrey M. Stewart  
Debra A. Tamborello  
Ella L. Thomas  
Daniel Traugott

### '89

John C. Ainsworth  
Brian P. Bowman  
Thomas Royce Brown  
Tammy J. Buchan  
Rosendo J. Castillo  
Kirk D. Churchill  
Lisa (Owen) Churilla  
Glenda Clare  
Coleen L. Crouch  
Brenda V. Ellison  
Jeffrey C. Flagler  
Marco T. Gutierrez, Jr.  
Dana L. Hess  
Christopher P. Hughes  
Therese M. Kominski  
Juliet LaDouceur  
John M. Lowe  
Mark D. Mahmood  
Tino Martinez  
Richard D. Maun  
Fernando A. Nolasco  
Donna B. Popovich  
Catherine Champlin  
Rowan  
Lisa Schmitz Sherman  
Jeff N. Sidor  
Karen M. Simon  
Karen Solis  
Stephen R. Stonewell  
Lee Anne Suszenski  
Donald S. Vowell

### '90

Patrick H. Allman III  
Kelly A. Besch  
Tiffany Jill Bishop  
Stacey L. Blackwood  
Cary M. Bogue  
Andrea L. Bogusky  
Roger S. Campeau  
Vincent Carrodegua  
William R. Cash  
Linda H. Catanach  
Michele M. Coneys  
Robert S. Crouch  
Amy B. Crumpton  
Naomi E. Feldman  
Daniel C. Florenco  
Jerry Flynn, Jr.  
Yvonne F. Gray  
John H. Hernandez  
Lt. Mark M. Herrin  
Sean R. Kelley  
Steven E. Liebel  
Susan S. McLain  
Donald M. Metzger  
Dorothy E. Moore  
James E. Moorehead  
Sandra Rae (Stewart)

O'Hara  
Virginia S. O'Herron  
Richrad H. Pelham  
Diane W. Platau  
Matthew J. Pollock  
Kathy A. Rooney  
Jason F. Schrago  
Kurt R. Schuldes  
Barbara A. Vallin  
Elaine R. Watson

### '91

Thomas C. Breslin  
Christopher F. Bryan  
John B. Cameron  
Beth-Anne Clancy  
Christine M. Cosgrove  
William L. Couchenour  
Ileana R. Couret  
Megan M. Dols  
Cynthia D. Ezell  
Margaret M. Goff  
Tracy Alan Harvard  
Mary Landsberger  
Laura Malear Lindeman  
Kathryn S. Lipman  
Sandra J. Luihn  
Beth W. Lunsford  
Laura L. Meisler  
Leandra Mollanazar  
Brenda K. Pancoast  
Penny S. Portnoy  
John Preisser  
Robin V. Schenck  
Sunday S. Swymer  
Karen S. Ugan  
Marci E. Zimmerman



# C O N T R I B U T O R S

'92

Michelle M. Allen  
Bruce H. Berger  
Janice F. Bravo  
Regina L. Brown  
Charles B. Cordeiro, Jr.  
Ann L. Dela Cruz  
Angela D. Dennis  
Carol Dore-Falcone  
Derek A. Fredette  
John R. Friedery

Angela Sue Gates  
Douglas G. Harding  
Annie M. Horne  
Dana Kober-Manny  
Marcelino Lemus  
Mary E. Liro  
Mary Ann Lublin  
Mark D. Markwell  
Robin M. McEvoy  
Beverly A. Mikolash  
R. Perry Monastero

Alice M. Murray  
Frances Offenburg  
Trudy K. Overby  
Nicole L. Porcelli  
Julio C. Ramirez, Jr.  
Samuel Rennard  
Ann M. Sarginson  
Denise A. Tanborello  
Mark D. Tibbs  
Julius C. Vaughn III  
Joseph L. Zolnowsky

'93

Tammy Rich

CLASS YEAR  
UNKNOWN

Eleanor W. Conway

## SPECIAL GIFTS

IN HONOR OF THE MEN and WOMEN  
OF THE U.S. MARINE CORPS  
Mr. James J. Martindale

## 1992-93 PARENTS' ASSOCIATION DONORS

Mr. and Mrs. Charles E. August	Mr. and Mrs. Allen W. and Sandra K. Craft	Mr. and Mrs. James A. and Linda Ingram	Mr. William B. Mayberry	Mr. Andrew J. Schroder III
Mr. and Mrs. Patrick Bayard	Mr. and Mrs. Donald and Elaine Crowley	Ms. Mary Jo Jarrett	Dr. Paul S. Michaelson	Mr. and Mrs. Manfred N. Siller
Ms. Cynthia L. Boliard	Mr. and Mrs. Gilbert and Loretta DeMeza	Mr. Lawrence Paul Keenan	Dr. and Mrs. William L. Moore	Dr. D. Gregory Singleton
Mr. and Mrs. Warren G. Boswell	Mr. and Mrs. Owen V. Deshong	Mr. and Mrs. Richard C. Kelsey	Mr. and Mrs. James E. Moorehead	Mr. Donald L. Small
Dr. Richard Langworthy Burdick	Mr. Daniel M. Duda	Mr. Richard A. Kerstein	Ms. Donna P. Murray	Mr. and Mrs. William T. Snyder, Jr.
Mr. and Mrs. David E. Bussone	Mr. Richard M. Enders	Dr. Douglas K. Kessler	Mrs. Sally Giroir Noller	Mr. John F. Sprengart
Mr. and Mrs. Scott and Linda Buttrey	Mr. and Mrs. Bob and Vicki Fales	Mr. and Mrs. Albert J. and Skaye Kirk	Mr. and Mrs. Michel Palein	Mr. and Mrs. Joseph T. Steuer
Mr. Joseph A. Cacciatore	Mr. Michael A. Freedman	Mr. and Mrs. Michael J. and Judy Kosiba	Mrs. Lois W. Pauchey	Mr. George W. Streff
Mr. and Mrs. Robert F. Cannon	Mr. and Mrs. Fassil Gabremariam	Mrs. Anna M. Leeds	Dr. and Mrs. Frank Pidala	Mr. and Mrs. Joe Testa-Secca
Mr. and Mrs. Jay and Geri Card	Mr. and Mrs. Steven and Sara Goldberg	Mr. Dave Lichtenfels	Mr. Gilberto D. Prado	Mr. and Mrs. Jim J. Tozzi
Mr. and Mrs. Bruce and Liz Carp	Mr. and Mrs. Ken and Jane Gordon	Mr. and Mrs. George and Judith Lorenz	Dr. W. Wayne Price	Dr. Michael H. Truscott
Mr. and Mrs. Eugene J. Casey	Mrs. Doris W. Hargrove	Mr. John R. Madden	Mr. Michael V. Roberts	Mr. and Mrs. Larry and Jan Udell
Mr. Joseph H. Chambers	Dr. and Mrs. Ernest W. Hetrick	Mr. and Mrs. John M. Marek	Mrs. Ana E. Rochet	Mr. Anthony M. Van Ess
Mr. Jim R. Clare	Mr. Robert P. Hoenscheid	Dr. and Mrs. Donald H. Marsian	Dr. Thomas V. Rossi	Dr. H. Griffin Walling, Jr.
Mr. Richard L. Cohen	Dr. Robert B. Ilderton	Ms. Nilda R. Martin	Dr. and Mrs. David G. Ruffer	Mr. and Mrs. William S. Weprin
Ms. Susan G. Courtney		Mr. and Mrs. Wayne N. and Betty S. Marx	Mr. Joseph J. Ryan	Mr. James Wilfong
			Mr. Francisco Schettini	Mr. William L. Willard
			Mr. and Mrs. William M. and Mary Schmitz	Ms. Lynona D. Woodbury

## COMPANIES THAT PARTICIPATED IN THE MATCHING GIFTS PROGRAM DURING FISCAL YEAR 1992-93

Allstate Foundation	Ernst & Young Foundation	NCNB Corporation
Andersen Consulting	G. D. Searle & Company	Phoenix Home Life Insurance Company
Ball Corporation	General Electric Foundation	Price Waterhouse Foundation
Barnett Banks	General Mills Foundation	Promus Companies
The Baxter Foundation	GTE Foundation	SmithKline Beecham Foundation
Becton Dickinson & Company	Honeywell Foundation	Sony Corporation of America Foundation, Inc.
The BOC Group	IBM Corporation	State Farm Companies Foundation
Bridgestone/Firestone, Inc.	IDS Financial Services, Inc.	Tandy Corporation
Caterpillar Foundation	Jefferson-Pilot Corporation	Vista Chemical Company
Champion International Corporation	Johnson & Johnson	Wal-Mart Foundation
The Chase Manhattan Corporation	Joseph E. Seagrams & Sons, Inc.	The Washington National Foundation
Chrysler Corporation Fund	Massachusetts Mutual Life Insurance Company	Winn-Dixie Stores, Inc.
Cigna Foundation	McDonnell Douglas Foundation	Xerox Foundation
Coopers & Lybrand Foundation	Monsanto Fund	Zurn Industries, Inc.
Digital Equipment Corporation	NationsBank	



# We All Benefit from Others' Generosity



Eleanor  
J. Jordan,  
Director of  
Major and  
Planned Giving

**W**alter R. Faries was a scholar. He loved books, teaching, traveling and all things related to higher education and learning.

Mr. Faries, an attorney in Philadelphia, PA and a professor at Wharton School of Finance, became a devoted supporter of UT after he retired in 1957 and moved to Tampa.

He took classes in Western Civilization under Dr. Stephen L. Speronis. In the mid-1960s he created a Memorial Book Fund and contributed cash, negotiable securities and a vast collection of books to the University's Merl Kelce Library.

Mr. Faries later made a **Testamentary Trust** through his **Will** directing that the major portion of his estate be left in trust to UT.

He died in 1969. Today his trust is valued at over \$200,000.

Why was he so kind to UT? Mr. Faries understood the need for private support of higher education.

He had been the recipient of a memorial scholarship during his college years and passed on his assets so that qualified students wanting to attend UT could also receive scholarships.

How fortunate we are that Mr. Faries supported these two tenets: That we are all the recipients of someone else's generosity and that education is a continuing process.

Leaving a **Bequest** to the University is a simple procedure. You can contribute through your **Will** in three ways: (1) An outright bequest of a specific amount of

assets; (2) A division of your estate designating a fraction or percentage to UT or; (3) Designating that the remainder of your estate go to UT after other obligations and bequests have been fulfilled.

A donor may also create a Testamentary Trust through a Will. If you have already prepared a Will, you can add a **Codicil** that designates some of your assets be distributed to UT. The important thing to remember is to have the advice of an attorney to be assured you are following proper procedures.

Fortunately, the recent passage of the Tax Reconciliation Act of 1993 makes charitable giving more attractive than at any other time in our history.

A donor can contribute appreciated long-term securities **without incurring alternative minimum tax (AMT)** under the new tax act. Selling appreciated securities creates capital gains taxes. Donating them to a non-profit institution will generate a current tax deduction and save the donor capital gains taxes as well avoiding **AMT**, under the new law.

The University is licensed to issue **Charitable Annuities** to donors who contribute either cash or negotiable securities. Under this agreement UT will pay an eligible donor a **Life Income** amount either monthly, quarterly, semi-annually or annually. Often the rate of return on a Charitable Gift Annuity is greater than the donor is receiving from dividends on the securities or as income from a certificate of deposit. A Gift Annuity takes the appreciated assets out

of the estate, avoiding estate taxes or inheritance taxes for your heirs.

There are other IRS approved methods for receiving an income and a tax deduction from a donation of cash or securities and these include: a **Charitable Remainder Trust**, and a **Charitable Lead Trust**.

The rewards for the charitable donor that are available today are numerous and significant. The first and foremost is the satisfaction of enabling others to share your legacy, benevolence, and generosity.

Second, you can generate a tax savings and perhaps also create an income stream for life. Third, your estate is reduced by the size of your donation and your heirs can benefit with thoughtful estate planning. You could also include a **Wealth Replacement Trust** which avoids probate but preserves assets for your heirs.

**Charitable Giving and Estate Planning is not just for the older, more affluent donor.** Younger donors, and those without appreciated assets to give away, can make a significant contribution to UT by starting now to contribute to an insurance policy that names UT as the owner and beneficiary of the policy. The premiums are tax-deductible and the policy can grow to become surprisingly significant in size.

If we can assist you in any way in your charitable giving, please call us at (813) 253-6220 or write: Development and University Relations, 401 W. Kennedy Blvd., Tampa, FL 33606-1490. **UT**

## ESTATE PLANNING SEMINAR

Alumni, parents and friends of UT, please join us for an estate planning seminar to be held during Homecoming, Sat., Oct. 23 at 10:15 a.m. The free lecture by UT MBA graduate Fazal Dasankop will be in room 220 (The Florentine Room) in Plant Hall. Mr. Dasankop specializes in financial planning. Please let us know your plans to attend so that we can prepare adequate seating.



# CALENDAR OF EVENTS

## Campus-Wide Events . . .

All events are free unless otherwise noted. Tours of Plant Hall, 1:30 p.m. Tuesdays and Thursdays. Meet in Lobby.

- Sept. 27 **Honors Program:** "Racial Clashes in 1920's Music;" "Ghandi in the 20's;" "From KDKA to the Electron Microscope: Science in the 1920's;" Ferman Music Center, Rm. 115, 4 p.m.
- Sept. 30 **Honors Program:** "A Twenties Ball," costumes of the 20's, music of the 20's, bathtub gin, readings from the 20's; sponsored by Student Honors Council, PH Ballroom, 7 p.m.
- Oct. 4 **Honors Program:** "Tampa Politics in the 1920's;" "Hemingway's Niche in the Lost Generation;" "The Impact of Hans Vashinger's 'As If' Philosophy on Cognitive Personality Theory;" Trustees Conference Room, 4 p.m.
- Oct. 8-10 "Taste of Florida," Plant Park
- Oct. 12 **Honors Program Film Festival:** Conflict of Cultures, Martinez Sports Center, 7 p.m.
- Oct. 18 **Honors Program:** "Movies & Movie-Goers of the 1920's," Martinez Sports Center, 7 p.m.
- Oct. 20 **Scholarship luncheon,** PH Fletcher Lounge, noon
- Oct. 22-24 **Alumni Homecoming Weekend.** See *Journal* Pages 12-14 (or Call the Alumni Office for details at 813-253-6268)
- Oct. 25 **Honors Program:** "The Harlem Renaissance," Trustees Conference Room, 4 p.m.
- Oct. 28 **Board of Fellows Business Network Symposium,** PH Ballroom. 7:15 to 8:45 a.m.
- Oct. 29 **Golf Tournament,** MBA Assoc. Drive for Education, four person scramble, \$100/person, after Sept. 27, \$125/person; luncheon provided on course; buffet dinner served at Awards Reception, Westchase Golf Club shotgun start, 1 p.m. Call Alumni Office, 813-253-6268
- Nov. 1 **Honors Program:** "The Universe is Expanding;" "The Soviet Union in the 1920's: From Innovation to Repression;" Trustees Conference Room, 7 p.m.
- Nov. 3 **Honors Program:** International Food & Film Festival: Africa, Martinez Sports Center, dinner, 6 p.m.; film, 7:15 p.m.
- Nov. 8 **Honors Program:** "The Mexican Murals," Scarfone Gallery, 4 p.m.
- Nov. 9 **Advising/Conference Day,** no classes
- Nov. 18 **Honors Program:** "Philosophy in the 1920's," Trustees Conference Room, 4 p.m.
- Tampa Alpha Board Meeting;** Martinez Sports Center, reception, 6 p.m.; meeting, 6:30 p.m.
- Nov. 19 **Ritual dances; in conjunction with exhibit of glass sculpture** by Susan Batian Gott, Scarfone Gallery, 7 to 9 p.m.
- Nov. 24-26 **Thanksgiving holidays;** offices closed, no classes
- Dec. 7 **Honors Program:** "A Room of One's Own," by Virginia Woolf, Martinez Sports Center, 7 p.m.
- Dec. 11 **Commencement,** Falk Theatre, 2 p.m.
- Dec. 13 to 16 Final Exams
- Dec. 17 Residence Halls close
- Dec. 24 to 31 Winter leave, University closed

## In the Gallery . . .

Open 10 a.m. to 4 p.m. Tuesday through Friday; 1 to 4 p.m. Saturday. No admission charge.

- Sept. 10 Exhibition: Josette Urso, graphics, paintings, mixed media
- Oct. 15 Three Central American artists: Francisco Amighetti, printmaking; Grace Herrera, painting; Alberto Murillo, printmaking; reception, 10/15, 7 to 9 p.m.
- Oct. 16 "Woodblock Workshop," instructor, Alberto Murillo, noted artist from Costa Rica, advanced registration necessary, \$45/person; Call 253-6217; 9 a.m. to 4 p.m.
- Nov. 19 Susan Gott, glass, mixed media, reception: 11/19, 7 to 9 p.m.

## Musical Notes . . .

- Sept. 26 Amy Collins, oboist; PH Ballroom, 8 p.m.
- Student Recital, PH Ballroom, 3 p.m.
- Oct. 2 Pre-college Recital; PH Ballroom, 2 p.m.
- Oct. 3 King of Instruments II (organ) Suna Chung, Sacred Heart Church, 4 p.m.
- Oct. 11 Andrew Galos, violinist; PH Ballroom, 4 p.m.
- Oct. 17 Judith Edberg, harpsichord; PH Ballroom, 4 p.m.
- Oct. 27 Student Recital, PH Ballroom, 3 p.m.
- Nov. 8 *Spectrum Contemporary Ensemble*, PH Ballroom, 8 p.m.
- Nov. 14 King of Instruments III (organ), Carla Edwards, Sacred Heart Church, 4 p.m.
- Nov. 17 Student Recital, PH Ballroom, 3 p.m.
- Nov. 19 Senior Vocal Recital, C. Daviss Woodbury; PH Ballroom, 8 p.m.
- Nov. 20 Faculty Recital: Michael Hart, assistant professor of music and Dr. Terry Mohn, chair/professor of music; trumpet, clarinet and saxophone ensemble; PH Ballroom, 8 p.m.
- Nov. 21 Tampa Arts String Quartet, PH Ballroom, 4 p.m.
- Dec. 1 Student Recital, PH Ballroom, 3 p.m.
- Dec. 3 UT Jazz Ensemble, Falk Theatre, 8 p.m.
- Dec. 5 Christmas Festival, UT Collegiate Chorale and the Mostly Pops Orchestra, Sacred Heart Church, 4 p.m.
- Dec. 12 Senior Piano Recital, Linda Leuci, PH Ballroom, 4 p.m.

## Spartan Sports Scene . . .

The following schedules are for home games only. For more information, call the UT Athletic Office at 813-253-6240. \*Sunshine State Conference games. General public admission, \$5; Senior Citizens, \$3; Students, Faculty & Staff, free with I.D.

**Basketball: Games played at Martinez Sports Center; Women, 5:45 p.m., Men, 8 p.m.**

- Nov. 19 Lynn College (W), 7:30 p.m.
- Nov. 22 St. Thomas University (M)
- Nov. 24 Ashland (W); University of Central Arkansas (M)
- Nov. 26 Wingate College (W), 1 p.m.
- Nov. 30 Webber College (M)
- Dec. 2 Franklin Pierce College (M)
- Dec. 6 Kennesaw State College (W); Florida Memorial (M)
- Dec. 9 Edward Waters (M)
- Dec. 18 Talladega College (M)

**Soccer: Games played at Pepin Rood Stadium, 7:30 p.m.**

- Sept. 25 Barry University
- Sept. 29 St. Leo College
- Oct. 19 St. Thomas University
- Oct. 25 Carson-Newman College
- Oct. 29 UT Puma Classic: USC Spartanburg
- Oct. 30 Lander University

**Volleyball: Games played at Martinez Sports Center, 7:30 p.m.**

- Sept. 24 Tampa Invitational, 2 p.m.
- Jacksonville State, 5 p.m.
- Sept. 25 Alabama, Huntsville, 2 p.m.
- Mississippi University for Women, 5 p.m.
- Sept. 27 St. Leo College
- Oct. 6 Florida Southern
- Oct. 13 University of North Florida
- Oct. 16 Wayne St. of Nebraska, 11 a.m.
- Oakland University, 5 p.m.
- Oct. 20 Eckerd College
- Oct. 27 Florida Southern
- Nov. 10 Barry University

## In the Falk Theatre . . .

**Stageworks opens its 10th Mainstage and first full length season at The University of Tampa:**

- Sept. 10 "The Fantasticks," America's longest running musical.
- to 26 Price: \$15; \$12 for students and seniors. Thurs. to Sat., 8 p.m.; Sun., 3 p.m.



# UT Bookstore

Presents...

**Heavy Weight Embroidered  
Sweatshirts by MV SPORTS**

From left to right...

Navy/Green Colorblock \$42.95

Ash/Navy/Green with patch sleeve  
and front applique \$53.95

Ash/Navy/Burgundy with patch  
sleeve and front applique \$53.95

Navy/Ash/Green Hooded Sweatshirt  
with die cut letters and front pocket \$53.95

Embroidered Backpack \$34.95

Navy/Burgundy Colorblock \$42.95

Sizes available: M,L,XL

## Holiday Suggestions

From left to right...

Mistletoe Bear \$ 7.95

University of Tampa Gold Cut-out

Ornament with box \$12.95

Sketched Holiday Note Cards  
10/ \$ 5.95

Plant Hall Glass Ornament with box  
from the H.B. Plant Museum \$12.95

Ornament Stand \$ 3.50

Mail orders to: UT Bookstore, 626 West North B. Street,  
Tampa, Florida 33606-1490

Phone orders to: (813) 253-6230 Fax orders to: (813) 254-6215

Please allow 3 - 4 weeks for delivery

Photo location compliments of H. B. Plant Museum

Shipping & Handling

Up to \$10.00 - Add \$3.00

\$10.01 - \$20.00 - Add \$4.00

\$20.01 - \$30.00 - Add \$5.00

Over \$30.01 - Add \$6.00

*The University Of*

**T A M P A**



Office of Public Information • (813) 253-6232

401 W. Kennedy Blvd. • Tampa, FL 33606-1490