

# MINARET

"The Pursuit of Excellence"

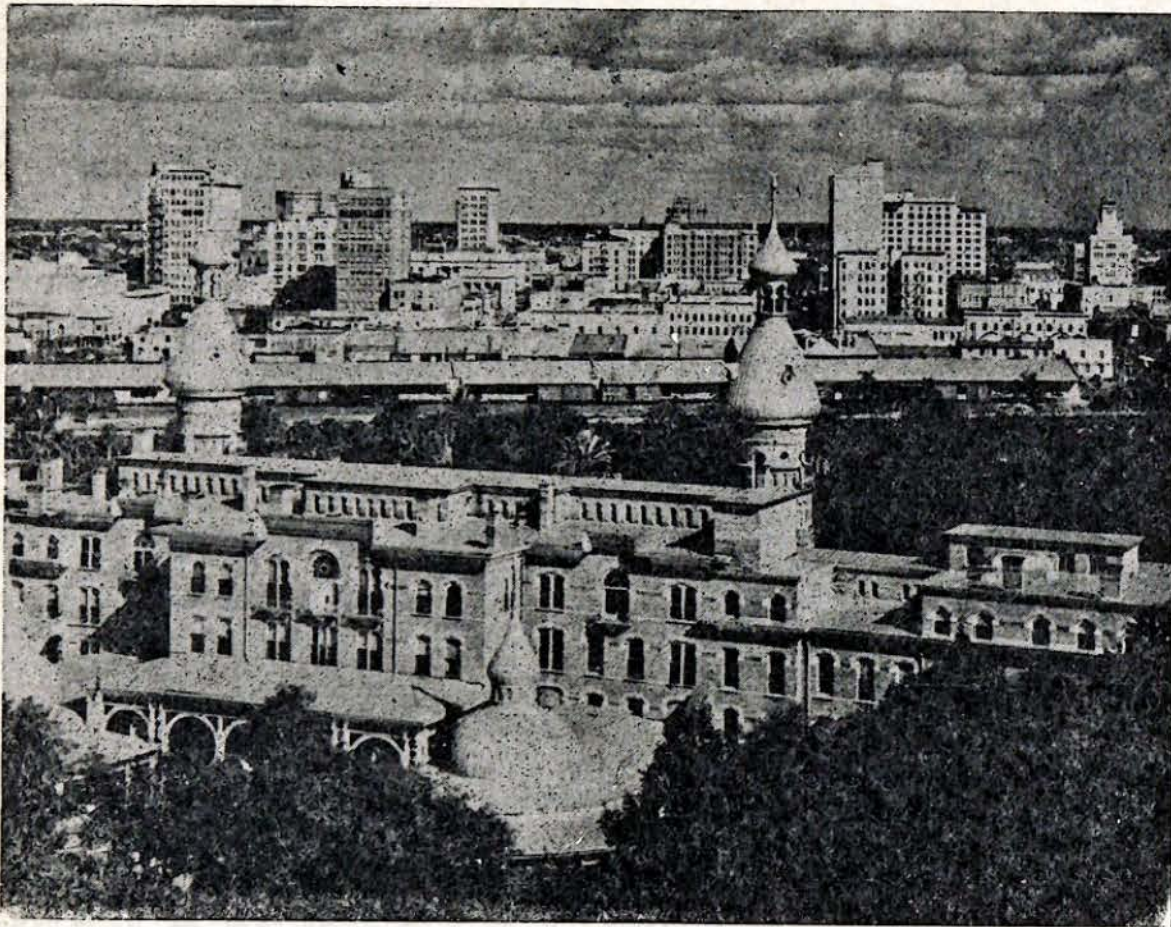
VOLUME XXXII, NO. 1

UNIVERSITY OF TAMPA, TAMPA, FLORIDA

SEPTEMBER 16, 1963

## FRESHMEN SPECIAL

### EVER STRIVING FORWARD



View of the University of Tampa and the City of Tampa

## University Students Get Green Light To Criticize School Policies

Boulder, Colo. — (I.P.) — The Faculty Senate at the University of Colorado adopted as submitted the report of the ad hoc committee to consider "the degree to which students may criticize publicly members of a university faculty and administration without disciplinary action by the University."

The committee, which included five faculty members and two student government representatives, agreed that disciplinary action "would be called for only under the rarest of circumstances. The com-

mittee said it "recognizes that 'guidelines' can consist only in the general principle to which we appeal."

"In the 'extreme case' we believe that the University Discipline Committee will have to rely on its own judgment as to whether the violation is so flagrant that it cannot pass unnoticed." The committee said it "was unanimous in its recognition that students must under no circumstances have their academic freedom abridged, and, indeed, that they should be encouraged to be critical of the teaching to which they are exposed."

The text of the committee's statement follows: "The University should encourage and stimulate independent thinking on the part of its students in every way possible. Likewise, it should encourage dissent, and freedom of opinion, and criticism of all ideas, policies, and programs of the University and of society. It should also encourage students to be critical of the quality of teaching to which they are exposed."

"However, it should be recognized that all such freedoms carry with them an obligation to use them wisely and prudently and in the best traditions of fair play and

justice; with due consideration and respect for the rights and feelings of others; and with a view to the ultimate effects upon the University of which they are a part."

"The University, since it is a corporate society having specific and unique aims, purposes, and objectives, has the right and the duty to expect of all its faculty, staff, and students, a reasoned and careful balance of their freedoms and responsibilities. In extreme cases the University, through appropriate channels, may be called upon to pass judgment upon its members with respect to their observance of the obligations that they owe to the University."

### TAIA Donates To Student Fund

The Tampa Association of Insurance Agents, consisting of 102 independent agents, has presented \$1,000 to the University of Tampa's Student Center Fund. After the presentation, Tom McMullen, representing the association, viewed the new furnishings in the Student Center lounge. McMullen is coordinator for the Fire and Casualty Insurance course at the university.

## Orientation Schedule

September 1963

- 14—Sat. 10 A.M. Residence Halls open
- 15—Sun. 7 P.M. Religious Group meetings
- 16—Mon. 9-10 A.M. Faculty and Freshman Convocation, Falk Theatre
  - 10 A.M.-12 M Placement tests for freshmen
  - 1-5 P.M. Placement tests for freshmen
  - 6-10 P.M. Placement tests, evening division, freshmen
- 17—Tues. 9 A.M. Convocation, Freshmen and Student Government — Falk Theatre
  - 10 A.M. Convocation — Women — Student Union, Dining Hall
  - 10 A.M. Convocation — Men — Falk Theatre
  - 2 P.M. Campus Tour
  - 3 P.M. Coke party honoring freshmen and transfer students — Student Union
  - 9 P.M. All Campus Sing — Student Union
- 18—Wed. 8 A.M.-5 P.M. Registration of freshmen and new transfer students
  - 3 P.M. Tea honoring all freshman women — sponsored by Panhellenic Council — Howell Hall parlor
  - 8 P.M. Religious group meetings
- 19—Thu. 12 M-8 P.M. Registration of sophomores and evening division students
  - 8 P.M. Movie, Falk Theatre
- 20—Fri. 12 M-4 P.M. Registration of seniors
  - 4-8 P.M. Registration of juniors and evening division students
  - 8 P.M.-12 M Back-to-school Dance — Student Union
- 21—Sat. 8 A.M.-12 M Registration (general)
  - 7 P.M. Pajama Parade
  - 8:15 P.M. Football game
  - 10:30 P.M. Delta Zeta script dance — Student Union
- 22—Sun. 4 P.M. Open House, local churches and religious groups
- 23—Mon. Classes begin.
- 24—Tues. Convocation, Dr. Delo, Guest Speaker

### Social Calendar

- Sept. 21 — Football, Western Kentucky State College, Phillips Field, 8:15 p.m.
- Sept. 26 — Football, Mexico Polytechnic Institute, Phillips Field, 8:15 p.m.
- Sept. 28 - Oct. 18 — Exhibition of new paintings by Joe Testa-Secca, LaMonte Gallery.
- Oct. 5 — Football, University of Southwestern Louisiana, Phillips Field, 8:15 p.m.

### H. E. Carmony Attends Emory

Harold E. Carmony, assistant professor of chemistry at the University of Tampa, was one of 22 college teachers attending a nine-week institute for college chemistry teachers at Emory University this summer.

This was the fifth year Emory has offered special chemistry instruction for teachers of college chemistry. The institutes, directed by Dr. W. H. Jones, are sponsored by National Science Foundation.

(Cont. on Page 3)

AN  
INFORMATION  
BOOTH  
WILL BE IN THE  
LOBBY DURING  
REGISTRATION WEEK  
TO HELP YOU

## ATTENTION!

ALL STUDENTS ARE TO WEAR TIE AND  
JACKET ON REGISTRATION DAY FOR  
MOROCCAN (ANNUAL) PICTURE.





## A Welcoming Message To The Freshmen From President Delo

It is always a thrill to meet a new class. You come to us from so many diverse backgrounds and localities. Each of you possesses abilities, outlooks, attitudes and potentials which are different from those of your classmates. But the same great question faces each of you. It is, "What will I do with the opportunity now before me — the opportunity to develop the capabilities which I possess?"

Each of you will find the faculty and staff interested in you as an individual, and willing to help you when assistance is needed. But this is a two-way street. By contrast, we expect you to assume your personal responsibilities as a member of the University. These include a high standard of personal behavior, both on and off the campus; conscientious performance of the academic tasks which are assigned by the faculty; constructive participation in various extra-curricular activities, which can be important experiences in your personal development.

**May I emphasize to you that a successful college career will require your full-time attention and maximum effort. Furthermore, one of the great elements in attaining this success is to exercise the self-discipline necessary to plan your days and weeks, to make a good start and then maintain the momentum you have achieved.**

For remember, that in all the colleges and universities of the United States, less than one half of the freshmen succeed in graduating because they do not exercise this self-discipline. I hope that you will disprove the average.

Mrs. Delo and I look forward to meeting each of you, and extend cordial wishes for a most successful and happy year.

Sincerely yours,  
DAVID M. DELO  
President

## From The Deans

Florida Rules and Regulations, Sales and Use Tax, Chapter 212, Florida Statutes, Florida's Revenue Act of 1949, as Amended 1961, Revised, Annotated and Indexed October 1, 1961, Rule 61 (13) states:

"Rentals of living quarters in fraternity house, apartments, hotels, motels and private homes as well as in dormitories, to bona fide students registered and attending daily classes at state-owned, and at chartered non-profit colleges and universities, are not subject to tax."

The University of Tampa is a chartered non-profit university. The above rules apply to full-time students taking at least 12 hours.

Effective immediately, Jimmie White's Bar, 1725 Grand Central, is OUT OF BOUNDS TO ALL STUDENTS. Any student who enters this property, or directly or indirectly, participates in, incites, or otherwise encourages any disturbance thereon shall be subject to immediate expulsion.

## Dear Editor

Dear Editor:

A problem that has been plaguing the driving portion of the student body this year is the parking situation. The student pays his two dollars every semester to park and when it comes time to park there are no facilities. The University charges for the privilege to park and then extends very limited privileges. It may seem annoying to harp on something but that is the only way to get something done. It is getting to be ridiculous. If you happen to park in some areas you are ticketed by both the city of Tampa and the school. Even the city condescends to give "courtesy" tickets. I'm not just going to complain but offer a suggestion. We may have to sacrifice some of our beautiful landscape but the problem must be solved. The half-grass, half-dirt area in front of McKay Hall could easily be converted into a rather large parking area for the sake of solution I think it is well worth it. The area between the two wings of this dormitory could also be sacrificed without the loss of beauty. Since a paved area would look a lot better than what it is now. The fines are also a little on the ridiculous side. To appeal a case you are actually gambling two dollars. If you pay the fine on time there is a reduction. For a five dollar fine it becomes three dollars. If you appeal you must pay the full five whether you are on time or not. Then hope for a favorable decision. I am also keeping an eye out for other possible solutions to this problem. Let me place emphasis on this: my purpose is not to lash out at the faults of the University, but to call attention to the problem and offer a possible solution.

AN UNHAPPY STUDENT

## Disc Dabblings

by Rita E. Owen

Spot-lighted in the new releases in records is Warner Brothers Records' Lynn Gold. This attractive folk singer appeared on the "Dinner with the President" on CBS Television this winter, and Miss Gold adds rich talents to the field of American folk music.

Her style combines singing, common enough to all singers, though her voice and range are distinctly uncommon and remarkably suited to her style of balladeering; and acting, not quite so common as the ability to sing. Miss Gold's major attraction, other than an extensive repertoire including songs in other languages, is her ability to combine a smooth, compelling voice with dramatization. She literally enters her songs, with a sensitivity so complete that the listener is projected into the medieval setting of "Anatheia," the Civil War tragedy of "The Melora Ballad," and the rollicking and slyly humorous Scotch-Irish sarcasm of "An Old Man Came Courting."

Her programming is likewise both common and uncommon. She pairs the best of several hundred years of balladry with popularly Americanized themes. "Anatheia" is joined by "Bonny Boy" in describing the hard, cruel life of the Medieval period, while at the opposite end of the calendar her rendition of Ewan MacColl's "Plane Wreck at Los Gatos" relays a very modern and very tragic theme of deportees. Miss Gold leans towards traditionalism with a refreshing like for lesser-known songs.

(Cont. on Page 4)

## Editorial

### OPERATION BUY

We all know that a college adds to the prestige of a community both culturally and economically. Your college, while both are done equally, receives face credit for only the first. Why is that so? This is a question that has us puzzled. Each year our student enrollment grows and with it the amount that we as students pour into the economy of Tampa grows. Yet, the business men are not willing to give us the credit we deserve (at least it appears as such).

How do we know? Advertising is the only way to inform the public of what you have to sell. Local merchants buy advertising in the local dailies to draw the general public to their stores and sell their goods. But they will not buy advertising in one of their more advantageous places, namely, The MINARET. When the larger businesses are approached on the subject, they tactfully bow out with the excuse that they have already contributed to the University of Tampa for this year. We maintain that they are NOT contributing to the University, but rather they are building their own sales volume.

How do we get them to realize this? Operation "BUY" has been started by the staff to inform the few faithful advertisers we have, of the amount of business we do give them. We are asking each new student to join with the upperclassmen and patronize those stores which are advertised in your paper. Also, we ask that you tell these people that you saw their ad in the MINARET. We want to show our advertisers and the rest of the businesses in Tampa that we are not a subject for CHARITY. Tampa should be proud of this University and realize that as it grows, so grows Tampa. Support your MINARET advertisers.

## From The Editor's Desk

May I, as Editor-in-Chief of the Minaret, congratulate you on your choice of the University of Tampa, and welcome you to the school.

It is my hope that through this FRESHMAN SPECIAL you will find your first few days in college a little easier.

When you arrive, you will find a warm and cordial atmosphere. Many upperclassmen are returning early this fall to help assist you in becoming familiar with your new surroundings.

So here you will find a University ever striving to create a quality academic program as well as one that keeps the pleasure and comfort of the student in mind.

From the President of the school to the Faculty and Staff, you will find a personal interest taken in your needs. This is something which you don't often find at other colleges.

With the excellent orientation week program which has been set up for you, I am sure you will have no trouble becoming a part of campus life.

Byron Hollingsworth  
Editor-in-Chief

## MINARET

The Minaret is published bi-monthly by the students of the University of Tampa, Tampa, Florida  
Member: National Advertising Service, Inc., Florida Intercollegiate Press, Associated Collegiate Press, Intercollegiate Press.  
Editor in Chief AL KINNAIRD  
BYRON HOLLINGSWORTH Business Manager



## Falk Theater To House Artists, Film Classics

Exciting entertainment will be offered area residents in the University of Tampa's 1963-64 "Theater Artists Series" at Falk Memorial Theater. It has been announced that special low prices on season's tickets will be in effect until Oct. 1, instead of Sept. 1, as previously announced. Dana Andrews, who was to appear in "Becket" on November 18, has been replaced by Academy Award winner Celeste Holm on that date. Other performances will be Jose Molina and his Spanish dancers October 31; Phillip Hanson in his famous one-man show, "Kings and Clowns," March 23, and Anna Russell, international concert comedienne, in a musical satire April 6. To reserve your season's tickets for only \$10 for orchestra seats and \$7.50 for balcony, write before October 1 to Drama Department, "Theater Artists Series," University of Tampa.

Ten Film Classics, with a bonus of ten short films, are slated at the University of Tampa.

The University of Tampa's Film Classics, in cooperation with the Cultural Activities Committee of the U. of T. Foundation, will present an outstanding series of movies in the Falk Theatre during the 1963-64 season.

Dr. Byron E. Besse, Chairman, announces the same social hour will continue at 8:00 p.m. before each showing at 8:30 p.m.

New season memberships are as follows:

Student Membership .....\$2.00  
U. of T. Foundation

Membership .....\$3.00  
Film Classics Membership .....\$4.00

Season memberships may be obtained by calling the University's Development Office, Ext. 270.

The following is the schedule for the season:

October 2 — **BALLAD OF A SOLDIER.** One of the finest European films of recent years. Directed by Grigori Chukrai. Awards at San Francisco and Cannes Film Festival. Russian 1960. Gerald McBoing's Boing Symphony — Short Subject.

October 16 — **THRONE OF BLOOD.** One of the world's greatest directors, Akira Kurosawa, has adopted the story of Shakespeare's

"MacBeth" to tell the tale of a power-hungry war lord in 16th century Japan. English subtitles. Japan 1957. Crime Control — Short.

November 6 — **DAS MADCHEN ROSEMARIE.** The story of the murder of Rosemarie Nitribitt, who kept a dossier on top German businessmen, diplomats, and foreigners. Starring Nadja Tiller and Peter Van Eyck. English subtitles. German 1958. Fatal Glass of Beer — Short Subject.

November 20 — **ROCCO AND HIS BROTHERS.** The study of a mother and her four sons who leave an impoverished farm in southern Italy to join a fifth son in Milan to seek a better life. Italian 1960. Captains Outrageous — Short Subject.

December 11 — **MEXICAN BUS RIDE.** The characters on the bus form a human comedy as it rolls through the tropical countryside. Directed by Luis Bunuel. Mexico 1952. Bencheley — Sex Life of a Polyp — Short Subject.

January 8, 1964 — **MAYERLING.** Most talked of, and most successful film of its time. It established Charles Boyer as "the" continental actor, and launched Danielle Darrieux on her career to becoming "the" continental actress. Directed by Anatole Litvak. Musical score by Arthur Honegger. France, 1937. Christopher Crummit — Short Subject.

January 22 — **EARRINGS OF MADAME DE.** A pair of earrings — pawned by the countess to pay debts she has incurred without her husband's knowledge, become the symbol of the countess' pride, without which she cannot live. Starring Danielle Darrieux, Charles Boyer. France 1953. Between Showers — Short Subject.

February 19 — **I'M ALL RIGHT, JACK.** A satire of trade-unionism, with Peter Sellers, Terry Thomas. England 1960. Violinist — Short Subject.

March 4 — **THE TITFIELD THUNDERBOLT.** An ancient single-track railway's fight for survival against a modern bus line. Stars Stanley Holloway. England. Great Train Robbery — Short.

March 18 — **TREASURE OF SIERRA MADRE.** Humphrey Bogart and Walter Huston play unforgettable roles in this story of men who seek, find, and die for gold

## Martineau New Resident Counselor For Dormitories

Michael A. DeCarlo, Dean of Men, has announced the appointment of Mr. Joseph Martineau as Assistant Resident Counselor for Men and Special Assistant to the Dean of Men. Mr. Martineau was selected for this position in recognition of his outstanding service to the University.

In his new capacity, Mr. Martineau will act as overall supervisor and coordinator of Smiley Hall, McKay Hall, and the Main Building Dormitory. In addition he will supervise the Dormitory Directors and Student Advisers.



Joseph Martineau

Mr. Martineau was born in Tampa, Florida. Upon graduating from Hillsborough High School in 1955, he entered Florida State University for one year. Thereafter he enlisted in the U.S. Air Force for four years and served as a Dental Laboratory Technician at a base in Paris, France. Upon being discharged in 1960 he entered the University of Tampa and was employed as a civilian dental laboratory technician at MacDill Air Force Base.

Mr. Martineau, a senior, is a pre-dental student majoring in psychology and minoring in French. He is a member of the Newman Club, Pi Kappa Phi fraternity, and the President of the Interfraternity-Sorority Council.

in the mountains of Mexico. United States Day Dreams — Short.

## Dr. Delo Appoints Lovely As Director Of Center

### Circle K Lists Service To Community

Robert E. Lovely, instructor of physical education at the University of Tampa, has been appointed as director of the college's new Student Center, Dr. David M. Delo, university president, announced.



Robert E. Lovely

Lovely, who takes over his new duties immediately in an office at the Center, will be responsible for scheduling of activities in various facilities at the Student Center, including the four meeting rooms. He plans to establish a program of recreational, social and cultural activities for students at the Center this fall and will work closely with a Student Center government which will consist of student representatives from dormitories and campus organizations.

The new director has been in charge of intramurals for the university's physical education department and has also served as assistant line coach of the Spartan football team since joining the university staff in September, 1960. He will relinquish these duties, but he and Mrs. Lovely will continue to serve as directors of Lykes Hall, men's dormitory at the university.

A native of South Groveland, Mass., and a graduate of St. James High School, Haverhill, in 1948, Lovely received a BS degree in education from the University of Tampa in 1956 and a Master of Education degree from Boston University the following year. He was an instructor at Bridgton Academy, North Bridgton, Maine, for

(Cont. on Page 4)

An outstanding opportunity for leadership, organization and management experience, and service to both the University of Tampa and the community is available to all students through membership in Circle K.

Circle K Clubs are college-level men's service organizations performing the same functions on the campus as do their sponsors — Kiwanis Clubs — in the community.

A few of the objectives of Circle K are:

1. To emphasize the advantages of the American way of life.
2. To provide an opportunity for leadership training in service.
3. To develop aggressive citizenship and the spirit of service for improvement of all human relationships.
4. To provide a practical means to form enduring friendships, to render altruistic service, and to build better communities.
5. To cooperate in creating and maintaining that sound public opinion and high idealism which makes possible the increase of righteousness, justice, patriotism, and good will.

Members are assigned to work on one or more standing and special committees. Standing committees are: House, Projects, Social, Public Relations, Education, and Membership.

Interested students are invited to submit their names to George Schill, President, Professor Keene (faculty adviser), or to the Dean of Men.

### CARMONY . . .

(Cont. from Page 1)

The course presented the newest developments in chemistry and gave teachers the opportunity to work with the newest instrumentation in the field. It was part of a national effort to strengthen science by improving science teaching.

# CAMPUS ORGANIZATIONS

The University of Tampa recognizes that important educational values are gained through participation in student activities. Students are encouraged to join and become active in one or more of the many organizations approved by and operating under the supervision of the University. This is intended to give the new students a brief description of some of the organizations now active at the University of Tampa.

### Honorary Organizations.

1. Phi Society — Students who appear on the Dean's List for academic excellence for both semesters of their freshman year may be eligible for Phi Society if the major portions of credits has been in Liberal Arts courses. Phi Society, installed at the University of Tampa in 1940, is a direct offspring of Phi Beta Kappa, oldest and most distinguished of American honorary fraternities. The organization is administered by faculty members who

belong to Phi Beta Kappa. The insignia is a gold key in the form of the Greek letter Phi — for Philosophy or learning in its broadest sense.

2. Alpha Psi Omega, Alpha Kappa chapter — National dramatic fraternity. It is the largest college organization in the world with more than 300 chapters. Membership is based on proved ability in dramatics and stagecraft.

3. Kappa Pi Alpha, Alpha Theta chapter — National art fraternity. Installed at the University of Tampa in 1948. Includes the finest artists in the University. Second-year art majors in good standing are eligible for membership.

4. Kappa Kappa Psi — National affiliated honorary band fraternity. Membership is based on musical ability, scholarship and participation in the University of Tampa band.

5. Pi Delta Epsilon — In 1954 the University journalism fraternity was first organized and installed as a chapter of Pi Delta Epsilon, national honorary collegiate journalism fraternity. Membership is open to men and women students who are qualified in the study and pursuit of journalism.

6. Sigma Alpha Iota, Beta Sigma chapter — National honorary music fraternity for women who have elected a major or minor in music. Membership is based on musical ability, scholarship and activity in music.

7. Sigma Tau Delta, Rho Zeta chapter — National professional English honorary fraternity. Its purposes are to encourage the study of English literature and to foster writing of high literary quality. The chapter at the University of Tampa publishes the literary journal En Avant.

### Departmental and Special Interest Organizations

1. Circle K Club — Circle K is a service organization sponsored by the Kiwanis Club. Membership is open to men of the University of Tampa through election by Circle K members.

2. Florida Collegiate Academy of Sciences, University of Tampa chapter — Any student who is interested in the sciences — biological, physical, medical and social — may become a member. The Collegiate Academy of Sciences which offers students an opportunity to work with the senior members.

3. Future Teachers of America (Student Florida Education Association) — All students who select majors or minors in education are expected to join the Future Teachers of America. The organization, which is affiliated with the National Education Association, exists to help students who propose to make a career of teaching become better

acquainted with their profession and to meet important visiting educators. It offers many opportunities for the development of leadership.

4. Health, Physical Education and Recreation Association — Membership of this organization is drawn from students primarily interested in physical education careers.

5. Spanish Club — Membership is open to students taking Spanish and to students interested in the Spanish language and culture. Purpose of the organization is to promote the Spanish and Latin American culture for better understanding among the English-speaking and Spanish-speaking peoples, and to uphold the social and cultural standards derived from familiar and fluent use of Spanish.

6. Student Association for Childhood Education — The University of Tampa chapter of this national and international organization

(Cont. on Page 4)





University of Tampa's new Student Center, above, is the hub of student activity.

## ORGANIZATIONS . . .

(Cont. from Page 3)

was founded in the fall of 1957 with a charter membership of 104 students. The objective of this organization is the continuing improvement of early childhood education in all fields — locally, nationally and internationally.

## FRATERNITIES AND SORORITIES

There are four national fraternities and five national sororities at the University of Tampa. The national fraternities are: Theta Chi, Pi Kappa Phi, Sigma Phi Epsilon and Tau Kappa Epsilon. Sororities are: Alpha Chi Omega, Delta Zeta, Zeta Tau Alpha, Phi Sigma Sigma and Sigma Sigma Sigma.

Each fraternity and sorority is a member of the Inter-Fraternity-Sorority Council, which promotes cooperation among the nine organizations. Each member organization has two representatives in the Council.

## Dean's Office Lists Male Dress Regulations For Fall

A student is considered to be a representative of the student body and the University of Tampa. Students are expected to dress as mature men and women and not as boys and girls. College is not an extension of high school, but the period when a student undergoes preparation to assume a position of leadership and responsibility in society.

While no effort is being made to regiment the student body in the matter of dress, every effort shall be made to promote those habits of dress and grooming considered in good taste and that do not attract unfavorable comment. College students should set the example for the community, not be pointed out as examples of deviations from the exemplary. In this regard, student body leaders, club presidents and other student representatives should take it as one of their implicit obligations to promote high standards. This can best be initiated by setting the example.

Students should be aware of the fact that the matter of personal appearance is always considered by admissions committees of universities, graduate schools, scholarship committees, officer candidate selection boards, and prospective employers. The latter will not be impressed by a neatly dressed, well-groomed applicant at the time of interview where the records of the personnel deans and the opinion sheets of the faculty and adminis-

tration indicate that the individual has been noted for his neglect of personal appearance and lack of pride.

*Failure to comply with both the letter and the spirit of acceptable standards shall result in the student being refused admittance to classes, the University cafeterias, and office spaces. Where students persist in ignoring or avoiding these standards, parents will be notified that the student is under suspension until he meets the standards of the University of Tampa. Under such circumstances, absences from classes are not excused. A letter has been sent to all parents and guardians advising them of this policy.*

1. The appropriate dress for men is suits, slacks, dress or sport shirts, with shoes and socks.

2. Footwear should cover the feet adequately. Thongs and other sandals are restricted to the dormitories, showers and beach use. They should not be worn anywhere else on campus or in town.

3. Sport shirts that are designed to be worn outside the trousers and do not resemble shirt tails may be worn outside the trousers. All other shirts must be tucked-in, neat, and clean.

4. Dungarees, blue denims, or three-quarter length slacks may not be worn on the campus at any time. (They may be worn inside the dormitory areas, but not outside).

5. Bermudas (Defined as approximately two inches above the knee).

**NOT PERMITTED:** Classrooms, Convocations, Main Building, Office Spaces, Sundays on Campus, Howell Hall before 6:30 p.m.,\* Howell Hall Sundays.\*

\*This includes the first floor balcony at Howell Hall.

**PERMITTED:** Cafeteria (only for Saturday breakfast and lunch), On Campus after 6:30 p.m. (except Sundays).

6. When dressed in bathing suits or similar attire in preparation for trips to pools and beaches, male students may not enter Howell Hall or the balcony. Men should arrange to meet their dates at specific times at the car. On such occasions, men should wear a shirt.

7. Dormitory Residents are not permitted outside of their dormitory in stages of undress at any time. A shirt must be worn in the lobbies at all times. Residents are not permitted in the dormitory lounges or lobbies barefooted at any time.

From time to time, special meetings or activities will be scheduled in the dormitory lobbies. Advance notice will be given. During these times students must be fully clothed when entering or passing through the lobby.

## U. S. Steel Gives \$1,000

The University of Tampa has received an unrestricted grant of \$1,000 from the United States Steel Foundation, Dr. David M. Delo, university president, announced.

The gift, which will be used as operating assistance by the university, is part of the Foundation's annual aid - to - education program. This year grants totalling \$2,480,000 have been awarded by the Foundation to 766 liberal arts colleges, universities and institutes in the nation, as well as 26 organizations dedicated to raising the quality of teaching and learning.

## Tu Graduates 61

Sixty-one seniors were candidates for graduation from the University of Tampa Friday, August 9.

No formal commencement exercises are held for summer graduates. The August candidates for graduation were honored at commencement exercises in June.

Forty-seven students received Bachelor of Science degrees and 14, Bachelor of Arts degrees.

## But Coach . . .

Dear Coach Musselman:

Remembering our discussions of your football men who were having troubles in English, I have decided to ask you for help.

We feel that Paul Spindles, one of our most promising scholars, has a chance for a Rhodes Scholarship, which would be a great thing for him and for our college. Paul has the academic record for this award, but we find that the aspirant is also required to have other excellences, and ideally should have a good record in athletics. Paul is weak. He tries hard, but he has troubles in athletics. But he does try hard.

We feel that Paul Spindles should hold a position of a regular varsity player, putting him if possible in the backfield of the football team. In this way, we can show a better college record to the committee deciding on the Rhodes Scholarships. We realize that Paul will be a problem on the field, but — as you have often said — cooperation between our department and yours is highly desirable, and we do expect Paul to try hard, of course. During intervals of study we shall coach him as much as we can. His work in the English Club and on the debate team will force him to miss many practices, but we intend to see that he carries an old football around to bounce (or whatever one does with a football) during intervals in his work. We expect Paul to show entire goodwill in his work for you, and though he will not be able to begin football practice till late in the season he will finish the season with good attendance.

Sincerely yours,  
Chairman, English Department  
Benjamin Plotinus

From: "The English Journal" — 1955

## DISC DABBLINGS . . .

(Cont. from Page 2)

Not to be ignored are "Sakura," the Japanese Cherry Song; and "Choucounne," which can be recognized as a basis for "Yellow Bird".

Interested in working on the University of Tampa newspaper, The Minaret, or Annual, The Moroccan? Either drop by the Minaret office or fill out the following form. Bring it or send it to: MINARET, UNIVERSITY OF TAMPA, Tampa, Florida (MINARET OFFICE on second floor of the main University Building).

MINARET

MOROCCAN

NAME \_\_\_\_\_

TAMPA ADDRESS \_\_\_\_\_

Experience (Not Necessary) \_\_\_\_\_

MAJOR AT U. of T. \_\_\_\_\_

## PARENTS:

Would you like to keep up with campus activities?

If so, complete this blank for a subscription to the Minaret, campus newspaper.

Name \_\_\_\_\_

Home Address \_\_\_\_\_

City \_\_\_\_\_ State \_\_\_\_\_

Enclose a check or money order for \$4.00, for a year's subscription to the Minaret. Send it to Minaret, University of Tampa, Box 28, Tampa, Florida.

# 1963

## University of Tampa Football Schedule

Sept. 21—Western Kentucky State College	(Home)
Sept. 26—Mexico Polytechnic Institute	(Home)
Oct. 5—University of Southwestern Louisiana	(Home)
Oct. 12—McNeese	(Away)
Oct. 19—Presbyterian College (2:30)	(Homecoming)
Oct. 26—Eastern Kentucky	(Home)
Nov. 2—Troy State	(Away)
Nov. 9—University of Mississippi	(Away)
Nov. 16—Wofford College	(Home)
Nov. 23—East Carolina	(Home)

All home games played at Phillips Field in Tampa, begin at 8:15 p.m.