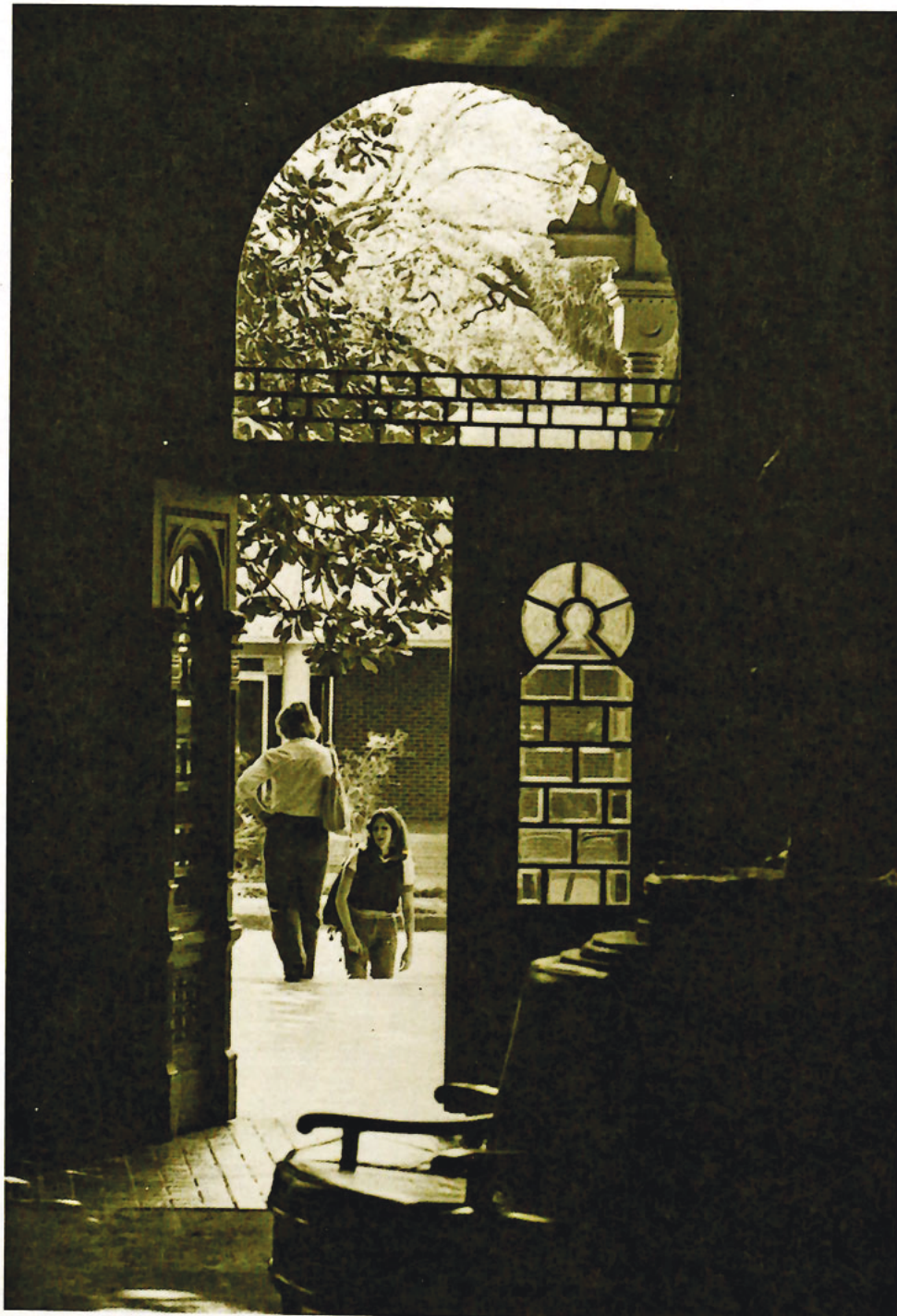


• The • University of Tampa •

MUEZZIN

Winter, 1980 Volume 51, Number 1



**Report of the
President
1979-1980**

BOARD OF TRUSTEES 1979

Executive Committee

Robert Thomas, *Chairman*, of the Board
President, Port Sutton, Inc.

J. Thomas Touchton, *Vice Chairman*, of the Board
Managing Partner, The Witt Company

Louis de la Parte, Jr., *Chairman*, Educational Affairs Council
Attorney, de la Parte and Butler, P.A.

James L. Ferman, Jr., *Chairman*, Business Affairs Council
President, Ferman Motor Car Company

David C. G. Kerr, *Chairman*, Public Affairs Council
Attorney, Macfarlane, Ferguson, Allison & Kelly

James W. Gray, Jr., *Member*, Executive Committee
Vice Chairman of the Board, Flagship Bank of Tampa

Thomas E. Bronson, *Member*, Executive Committee
President, Florida Mining & Materials

Elden T. Smith, *Member*, Executive Committee
Educational Consultant

Marlene M. Smith, *Member*, Executive Committee

Richard D. Cheshire, *Member*, Executive Committee
President of the University

G. Robert Blanchard
President, Rozier Machinery Company

H. L. Culbreath
President, Tampa Electric Company

Charles M. Davis
President, Davis Brothers Insurance Agency

A. L. Ellis
Chairman of the Board, Ellis Banking Corporation

Robert F. Ensslin, Jr.
Chairman of the Board, Ensslin & Hall Advertising, Inc.

Herbert J. Friedman
President, Southern Mill Creek Products Company, Inc.

John Germany
Senior Partner, Holland and Knight

Frank W. Harvey
President, Maas Brothers, Inc.

John J. Hennessey
Gen. U.S. Army, Retired

Max H. Hollingsworth
Member, Board of Directors, Winn-Dixie Stores

William A. Krusen
President, General Engineering & Machine Company, Inc.

Fred D. Learey
Chairman of the Board, Retired, General Telephone Company of Florida

Joseph A. Martineau
D.D.S.

Herbert G. McKay
Vice President, Dean Witter Reynolds, Inc.

Frank L. Morsani
President, Precision Motorcars

Harris H. Mullen
President, Trend Publications, Inc.

J. Ross Parker
President, Pepsi-Cola Bottling Co.

Barbara B. Romano
Secretary-Treasurer, International Travel Bureau, Inc.

Frederick M. Rothenberg
Attorney: Fowler, White, Gillen, Boggs, Villareal and Banker, P.A.

Hugo Schmidt
President, Hugo Schmidt & Company

T. Terrell Sessums
Attorney: Albritton, Sessums & McCall

Michael Thomas
President, Wayne Thomas, Inc.

William J. Turbeville, Jr.
Chairman of the Board and Chief Executive Officer, Phosphate Rock Export Association

J. H. Williams, Jr.
President-Treasurer, J. H. Williams Oil Company, Inc.

John M. Wolfe
President, Products for Industry, Inc.

TRUSTEES EMERITUS

Victor H. Northcutt, *Trustee Emeritus*
Honorary Chairman of the Board, Broadway National Bank

Walter S. Pierce,
Trustee Emeritus

Morris E. White, *Trustee Emeritus*
Attorney, Fowler, White, Gillen, Boggs, Villareal and Banker, P.A.

Alvin P. Yorkunas, *Trustee Emeritus*
Al Yorkunas Advertising Agency

SENIOR ADMINISTRATION

Richard D. Cheshire, Ph.D., *President*

Edwin F. Wilde, Ph.D., *Provost and Dean of Faculty*

Rudolph E. Koletic, M.B.A., *Vice President for Business Affairs*

J. Mark Lono, Ph.D., *Vice President for Public Affairs*

John D. Telfer, L.L.D., *Secretary of the University*

Dear Colleagues and Friends:

AS WE BEGIN the 1980-81 academic year, our fiftieth, we can see that much of what happened at the University of Tampa in 1979-80 formed the basis for important developments now underway.

Eleven donors committed gifts and pledges to the University in the extraordinary sum of three million dollars. Concern about a possible operating deficit led to cost-cutting efforts that allowed the year to end with a balanced budget and new ongoing efficiencies of operation. A new report on the future of the University produced during the year is now the basis of a disciplined long-range planning process. New initiatives in admissions and student services have resulted in a fall 1980 enrollment right on target. Adoption of a proposal for a pioneering new "bimester" academic plan resulted this fall in its first phase implementation.

A series of developments concerning campus facilities are triggering several important building renovations. A special report about curriculum released last year will generate major discussion of specific curriculum reforms this year and next. A management study of the public affairs area has set the agenda for its priorities in the year ahead. Administering the University now is a new team of senior officers appointed in 1979-80.

Academic Turning Point

THE 1979-80 YEAR proved to be an academic turning point for the University. Measurably higher standards of admission and continuance for students further enhanced the academic environment on campus but also caused a shortfall of enrollment. This contributed to a budgetary stringency that prevailed throughout the year and added further impetus to the tightening of administrative operations and expenditure controls.

The academic environment was strongly influenced at the beginning of 1979-80 by the release of the Report of the Special Committee on Calendar, chaired by Professor Robert Harder. This report led to a landmark decision for the University, approval of a new bimester academic calendar plan, wherein students generally take two courses at a time, eight hours a week for seven weeks, instead of the usual four or five courses at a time, three hours a week for fourteen weeks. Thirty-two of these enriched four-hour courses will be required for graduation compared to the usual 40 three-hour courses.



With students and faculty thus taking and teaching fewer courses at a time, there is an improved likelihood of coursework concentration, pace, and accountability. The implementation of this new split-semester academic calendar arrangement begins this fall with a group of 155 new students recruited specifically according to this plan. The whole University will be on the plan next year.

U.T.'s singular bimester plan was endorsed by a \$100,000 grant from the Charles Dana Foundation of New York to help pay the costs of transition to the new system, and by a

\$100,000 grant from the Saunders Foundation of Tampa, largely to pay for creating three new seminar rooms to foster the more individualized and intensive approach to education emerging at U.T. and represented by the bimester. As the academic year ended, the first group of 24 faculty members



to teach in the bimester participated in a special workshop, paid for in part by the Charles Frueauff Foundation of New York, to prepare them for the intensive small-group learning format of bimester courses.

Parallel with this attention to the *way* of learning in the academic turning-point year was consideration of the *content* of learning. A report of the Special Committee on Curriculum, chaired by Professor Mary Jane Schenck, presented proposals now being considered concerning the intellectual atmosphere on campus, academic advising, competency testing, core curriculum, and field study related to academic majors. Also, the English faculty put in place a new freshman writing program focusing on a common theme about the future, requiring all papers in the program to be submitted and resubmitted until they meet tough standards of writing correctness, and including four individual conferences between the professor and each student.

The scope of U.T.'s academic service broadened during 1979-80 with a new emphasis on continuing education: the appointment of the first dean of continuing education; the University's takeover of responsibility from a subcontracting organization for the middle-management seminars offered on the campus; a survey of educational needs downtown; the launching of a new "Re-entry Program for Women"; and a loan of \$50,000 from our local alumni chapter to help reconfigure the former Tampa Bay Art Center on our campus as a new continuing education center.

The academic emphasis in 1979-80 was also represented in rigorous and, in a specific case, controversial attention to the faculty tenure process, with the faculty approving new procedures extending the probationary period from four to six years. Nine of thirteen eligible professors were granted tenure in the spring.

As the year ended we were pleased to be able to welcome a new provost and dean of the Faculty, Dr. Edwin Wilde, an aggressive and imaginative academic leader from Beloit College and Roger Williams College. We appreciate the administrative assistance in academic affairs from Dr. David Ford, acting provost, and Dr. Stanton Truxillo, acting assistant provost, who helped during the transition period.

Dynamic Campus

CAMPUS LIFE IN 1979-80 was benefited by an increasing number of special events on campus, including a revitalized Fall Celebration for parents and alumni, the beginning of an annual economic forecast symposium for area business and professional people, and a spring Charter Day program on "Tampa's Downtown Boom."

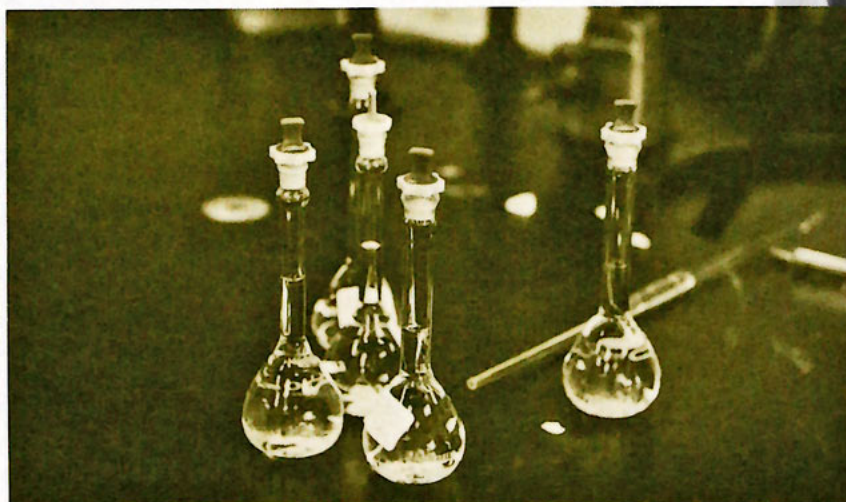
We are especially pleased to welcome into residency on campus the Alice People theatre company, which enjoyed a successful season in our David Falk Theatre, and we continued to appreciate the presence on campus of the Tampa Ballet, the Community Concert Association, the Spanish Little Theatre, and the Florida Gulf Coast Symphony.



A major fact of campus life is a larger resident population, more than 1,000 students living in our five major and five smaller residence halls. A problem emerged in the spring when much larger numbers of continuing students elected to live on the campus than had done so in recent years, a result in part of the tightening apartment situation in Tampa. This considerably complicated the housing assignment plan already in place and made dramatic the need for immediate planning of new residence space on campus.

As a short-term solution, the University purchased the Spartan Arms apartment opposite our main campus on Kennedy Boulevard, and this is now in use as a student residence hall, bringing our on-campus population to about 1,100 students.

Campus life is somewhat more spirited with the emergence of higher-profile athletic activity on campus.



Increasing numbers of student are participating in intramural and club sports, and our intercollegiate teams are flourishing under the direction of mostly full-time coaches and staff.

Efficient Operation

NEW GOVERNANCE and management initiatives and the very tight 1979-80 budget situation moved the University further toward efficient institutional operation.

The University began the year fresh from a 1978-79 year-long management study of the business affairs of the University, the first phase of the new Trustees-sponsored five-year cycle of administrative evaluations. This

undergirded the University's effort in budget management, plant operation, security, personnel, computer and legal services, purchasing, bookstore, post office, and food service.

The University also introduced a new budgeting process that is integrated closely with the university planning effort. This should provide a more comprehensive review of the

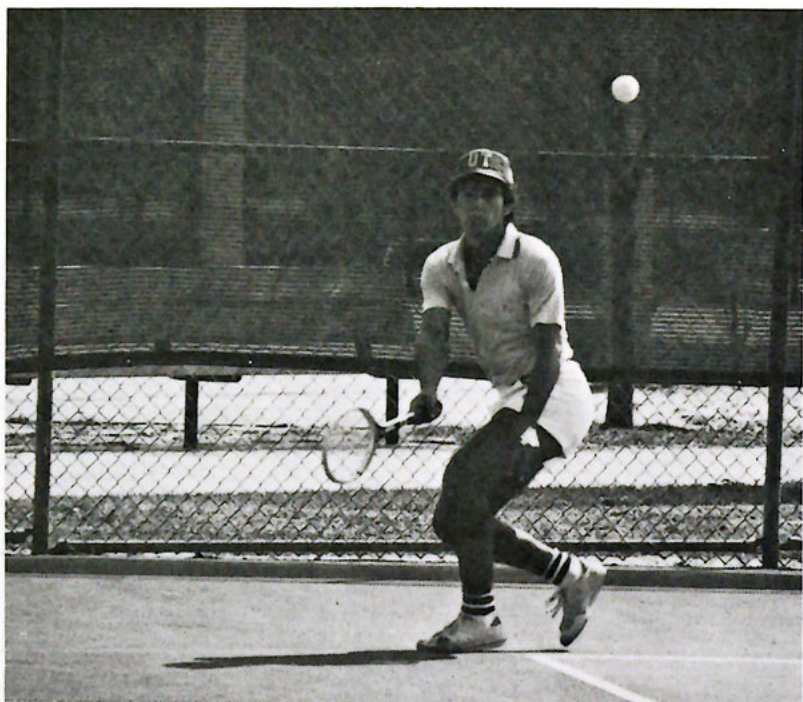


institution's priorities and funding commitments and a more effective use of its resources. The 1979-80 fiscal year ended on a positive note with a surplus of \$163,000 increasing the accumulated current unrestricted fund balance to \$207,000.

This was also a year of unusual attention to campus physical facilities, especially because initial arrangements were made to sell 6½ acres of University property which currently is the location of Howell Gymnasium, Phillips Field, the Alumni Building residence hall housing about 30 students, and our tennis courts. Max Factor III purchased an option on the property, which he hopes to make into a complex of condominiums, hotel, office towers, and shopping arcade to be called "Westbank" and to cost up to \$130 million. We expect to know this year how this project will

materialize, and when we do we will need to accelerate our planning for new sports facilities.

We strengthened our management of campus operations by the appointment of Leo Smith from Mercy College as our new plant director and Patrick Schaefer from the University of South Florida as our new campus police director; by the



appointment in the summer of 1980 of Morrison's Cafeterias to operate the food service; and by realignment and reduction of the grounds and maintenance staff. These developments resulted in a new emphasis on crime prevention, a greater efficiency in buildings and grounds operations, and a lower cost/higher quality dining program.

Heading the finances and facilities activities at U.T. is a new vice president for business affairs, Rudolph E. Koletic, who had been controller of the State University of New York at Buffalo and vice president at St. John Fisher College and who serves on the Small College Committee of the National Association of College and University Business Officers.

Recognition and Support

THIS WAS THE year of the largest philanthropic action ever on behalf of the University (and, to date, in the city of Tampa generally) — \$2,500,000 in pledges from seven anonymous donors, to be paid over the next five years as an expression of confidence in the University's future. Welcome also was a \$250,000 grant from the David Falk Foundation to help renovate the David Falk Theatre on the campus, and with the two \$100,000 grants and an anonymous \$50,000 donation this contributed to an unprecedented three million dollars in gifts and pledges to U.T. in just three months!

This was also a year when a new attitude toward independent colleges in Florida became evident — with the continuation of the Florida Student Assistance Grants, the beginning of the Tuition Voucher Fund for students attending private colleges in Florida, and authorization of a new Academic Merit Scholars Fund to include students at private colleges. State Senator Malcolm Beard, a U.T. alumnus, and other friends in the Legislature successfully assured the continuation of the so-called "charity days" at Florida Downs, Tampa Greyhound, and Tampa Jai Alai — which contribute collectively about \$100,000 a year to our scholarship program.

The public affairs operations of the University were the subject in 1979-80 of the annual Board of Trustees-sponsored management study of some aspect of the University's operations. This study, chaired by Trustee Harris Mullen, resulted in a series of specific recommendations we are now moving to implement. Assisting in the process were several consultants, most particularly Arthur Frantzreb, a highly regarded authority on philanthropy.

The former public information and publications offices were combined into a new communications office, headed by Tom Boyle, formerly with the University of South Florida which is providing improved service and new vehicles of communications for the University.

The admissions office helped encourage a 32% increase in applications for 1979-80, which held steady for 1980-81, with actual 1979 enrollments down somewhat from the 1978 highs but back up again this fall. The success of our promotion and recruitment efforts is necessary in order to



make possible a more selective admissions standard. While the national S.A.T. standard testing score averages have declined 88 points since 1963, U.T.'s scores have risen 103 points just since 1973, aided by a recent U.T. merit scholarship program that especially serves well qualified students nationally and Tampa area students particularly.



This increasing U.T. scholarship program plus the other sources of financial aid, a total of more than \$3 million in 1979-80, was administered early in the year by Financial Aid Director Rod Plowman, who then assumed a new position as director of development services and was succeeded by David Bodwell, who came to us from Roger Williams College in Rhode Island.

Heading the whole public affairs operation was Dr. J. Mark Lono, promoted last summer from his position as secretary of the University to be vice president for public affairs in order

for us to devote greater attention to constituency relations and financial support.

GIVING CONSTANT ASSISTANCE throughout the year was an exceptionally active and concerned Board of Trustees, inspiringly led for the second year by Robert Thomas, president of Port Sutton Inc., who has been succeeded for 1980-81 by Thomas E. Bronson, president of Florida Mining and Materials. Other leaders of the Board during the year included J. Thomas Touchton, Louis de la Parte, James Ferman Jr., and David C. G. Kerr.

Our planning for the future was moved forward during 1979-80 by the work of a Committee on the Future, headed by Trustee and past Interim President Fred D. Learey. The



Committee affirmed the University's new stated mission statement and its role as a collegiate university emphasizing undergraduate liberal arts and career studies. It recommended continued small size for U.T. and underscored the concepts of management partnership, learning partnership, and community partnership. The Committee's work has led to a master planning process directed by the new secretary of the University, John D. Telfer, an experienced campus planner who is a founder and past president of the Society for College and University Planning.

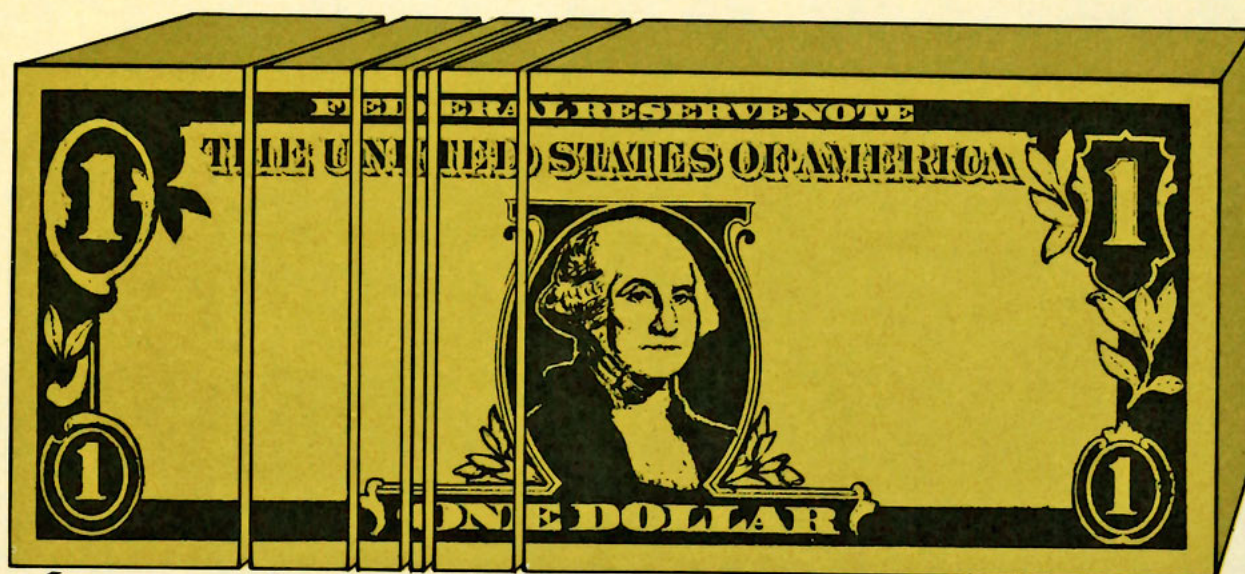
These accomplishments during 1979-80 have put the University of Tampa in a position of strengthened management, strengthened financial condition, and strengthened market position. As we begin our fiftieth year we are ready to focus confidently on the future.

We welcome your interest, advice, and support. Join us for a thriving second half century.

Willie Clumrie

The University Dollar

Revenue Sources



Auxiliaries 20¢

Revenues from bookstore,
residence & dining halls

Federal & state
student aid 8¢

Other 3¢

Income from rental property,
and short term investments

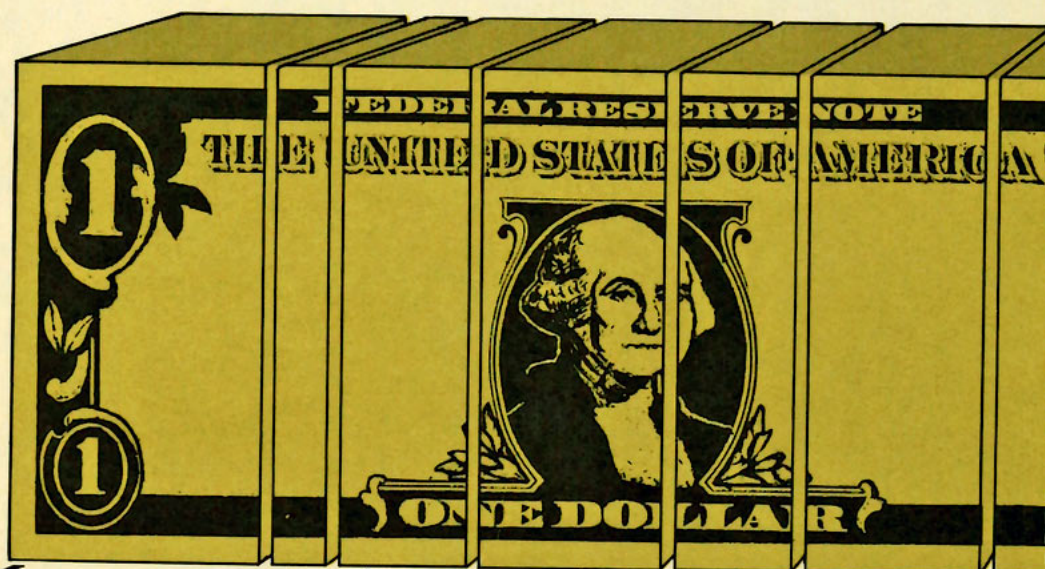
Endowment 1¢

Income from investments

Private gifts & grants 6¢

Tuition & fees 62¢

Uses



Instruction 22¢

Faculty salaries and benefits,
supplies and other costs
directly related to teaching.

Academic Support 5¢

Funds used to provide
support services to the
institution's primary mission
of instruction and public
service. It includes libraries
and academic
administration.

Student Services 11¢

Funds used to support
admissions, registrar, health
services, student activities,
cultural events, student
newspaper, intramurals,
student counseling and
Dean of Students.

Institutional Support 16¢

Includes expenditures for
central executive level
activities concerned with the
management of the
university's fiscal operations,
planning, employee
personnel and records,
computer services, risk
management and other
related services.

Student Aid
Scholarship
other stu-
dents
awards.

Maintenance of Phys
Plant 9¢
Maintenance of build
grounds and energy

FINANCIAL HIGHLIGHTS

| | 1979-80 | 1978-79 |
|--|--------------|--------------|
| CURRENT FUND OPERATIONS (Consolidated): | | |
| Revenues | \$10,870,576 | \$10,654,602 |
| Expenditures & Transfers | 10,612,750 | 10,656,468 |
| Net Increase (Decrease) Fund Balance | \$ 257,826 | (1,866) |
| GIFTS, GRANTS AND BEQUESTS | | |
| Current Operating Purposes | \$ 1,565,560 | \$ 1,638,856 |
| Endowment and Similar Funds | 52,324 | 81,053 |
| Plant Funds | 12,038 | 11,026 |
| Loan Funds | 131,122 | 75,300 |
| STUDENT FINANCIAL AID | | |
| Scholarships | \$ 1,629,779 | \$ 982,795 |
| Loans | 312,325 | 272,274 |
| Campus Jobs (College Work Study) | 146,219 | 110,248 |
| ENDOWMENT AND SIMILAR FUNDS | | |
| Book Value of Investments | \$ 1,493,819 | \$ 1,145,788 |
| Market Value of Investments | 1,555,507 | 1,182,791 |
| TOTAL ASSETS AND PHYSICAL PLANT | | |
| Total Assets (including Plant) | \$17,381,981 | \$16,753,471 |
| Total Plant Funds @ Book | 12,374,852 | 12,100,067 |

STUDENT ENROLLMENT PROFILE

| | Fall, 1980 | Fall, 1979 |
|---|------------|------------|
| Undergraduate | 1,844 | 1,799 |
| Graduate (Master of Business Administration & Master of Education) | 219 | 325 |
| MacDill Air Force Base Center | 174 | 174 |
| Total enrollment | 2,237 | 2,298 |
| Average Freshman Scholastic Aptitude Test (SAT) scores .. | 931 | 912 |
| National SAT average | 888 | 893 |
| Tuition and Fees | \$3,866.00 | \$3,506.00 |
| Students (Full-time Equivalent)* | 1,842 | 1,861 |
| Faculty (Full-time Equivalent)* | 112.35 | 110.75 |
| Student/Faculty Ratio | 1:16 | 1:17 |
| Library Volumes | 168,722 | 165,976 |
| Degrees Conferred (including Graduate) | 548 | 599 |



Debt Services 2^c
Repayment of loan interest
and principal.

Auxiliary Enterprises 20^c
Costs related to the
operation of housing, dining
and bookstore.

grants and
assistance

s,
ts.

University of Tampa Donors — 1979

Minaret Society

Minaret Society Chairmen

Founding Chairman: Fisher S. Black
1972-1973 Robert Thomas, Charter
Chairman
1973-1974 Sam F. Davis
1974-1975 Fred D. Learey
1975-1976 J. Thomas Touchton
1976-1977 H. Grady Lester, Jr.
1977-1978 J. Ross Parker
1978-1979 J. Ross Parker

Gold Crescent Life

Mr. and Mrs. A. L. Ellis
Mr. and Mrs. Israel Kessler
Mr. and Mrs. Walter Kessler
Ms. Kathryn Leahey McNulty
Mr. and Mrs. Fondren Mitchell
Mr. and Mrs. Richard R. Wittcoff

Silver Crescent Life

Mr. and Mrs. Max H. Hollingsworth
Mr. Thomas S. Lovering
Mr. and Mrs. Lester Mallett
Mr. and Mrs. Walter Mallett
Mr. and Mrs. Reginald Sims

Crescent Life

Mrs. D. E. Abbott
Mr. and Mrs. Doyle E. Carlton, Jr.
Mr. and Mrs. J. W. Crews, Jr.
Ms. Carol Ott Cutinha
Mrs. Jane Carlton Durando
Dr. and Mrs. Ralph Jensen
Mr. and Mrs. Harry A. MacEwen
Mr. and Mrs. Chester Mallett
Dr. and Mrs. W. J. Ott
Mr. Walter S. Pierce
Mr. and Mrs. Paul C. Pinson
Dr. and Mrs. Clyde Reed
Mr. and Mrs. Gilbert E. Turner

Gold Crescent

Mr. and Mrs. Sidney Allen
Mr. and Mrs. Thomas E. Bronson
Mrs. David A. Falk
Mr. and Mrs. J. Ross Parker
Mr. and Mrs. Edward B. Rood, Sr.
Mr. and Mrs. George M. Steinbrenner, III
Mr. and Mrs. Robert Thomas

Silver Crescent

Mr. and Mrs. Andres Faza
Mr. and Mrs. Albert Lang
Mr. and Mrs. Frank L. Morsani
Mr. and Mrs. Harris H. Mullen
Mr. and Mrs. Albert C. Van Dusen
Miss Rachelle Wilderman

Crescent

Mr. Thomas G. Abraham
Mr. and Mrs. Alfred S. Austin
Mr. and Mrs. W. J. Barritt, Jr.
Mr. and Mrs. Lee B. Berman
Mr. and Mrs. Charles W. Birdsong
Mr. and Mrs. G. Robert Blanchard
Mr. and Mrs. W. D. Blizzard
Mr. and Mrs. Sam Bucklew
Mrs. Byron Bushnell
Mrs. Doyle E. Carlton
Dr. and Mrs. Richard D. Cheshire
Mr. and Mrs. James J. Corral
Mr. Paul Cousins
Mr. and Mrs. George D. Curtis, Jr.
Mr. and Mrs. Charles M. Davis
Mr. and Mrs. Harold H. Davis
Mr. and Mrs. Sam F. Davis
Mr. and Mrs. Louis de la Parte, Jr.
Mr. and Mrs. Miguel A. Diaz
Mr. and Mrs. William F. Ebsary
Mr. and Mrs. Cecil Edge, Jr.
Mr. and Mrs. Robert F. Ensslin, Jr.
Mr. and Mrs. Lawrence L. Falk
Mr. and Mrs. James L. Ferman, Jr.
Mr. and Mrs. James L. Ferman, Sr.
Mr. and Mrs. S. L. Flom
Dr. and Mrs. David B. Ford
Mr. and Mrs. Herbert J. Friedman
Mr. and Mrs. John Germany
Mr. and Mrs. James W. Gray, Jr.
Mr. and Mrs. G. Richard Griffin
Col. and Mrs. Joseph S. Gutierrez
Mr. William Haggerty
Mrs. John E. Harris, Jr.
Mr. and Mrs. Frank M. Henry
Mr. and Mrs. Robert A. Jaeb
Mr. and Mrs. James S. Judy

Mr. and Mrs. Nash Karahan
Mr. and Mrs. John W. Kercher, III
Mr. and Mrs. Peter O. Knight, Jr.
Mr. Charles B. Krusen
Mr. and Mrs. William A. Krusen
Mr. and Mrs. Fred D. Learey
Mr. and Mrs. H. Grady Lester, Jr.
Mr. and Mrs. Colin Lindsey
Mrs. W. J. Lockett
Drs. Luz and Mark Lono
Mr. and Mrs. Ben Lynn
Dr. and Mrs. Alfred S. Massam
Mr. and Mrs. James F. Mellon
Dr. and Mrs. Michael J. Mendelsohn
Mr. and Mrs. Joseph D. Midulla, Jr.
Mr. and Mrs. J. B. Hamner Miller
Mrs. George F. Milliken
Mr. and Mrs. J. K. Murray
Mr. and Mrs. Herbert G. McKay
Mr. and Mrs. Lester K. Olson
Mrs. Charles C. Paterson
Mrs. Margaret Pendola
Mr. and Mrs. David C. Pinholster, Sr.
Mr. and Mrs. Allen N. Reeves
Mr. and Mrs. Jack Romano
Mr. and Mrs. Frederick M. Rothenberg
Mr. and Mrs. Chase M. Rotureau
Mr. and Mrs. Hugo Schmidt
Mr. and Mrs. James F. Sheldon
Mr. and Mrs. James H. Shimberg
Mr. and Mrs. Mandell Shimberg, Jr.
Mr. and Mrs. Freddie Solomon
Mr. and Mrs. William Steinberg
Mr. and Mrs. Paul A. Straske
Mr. and Mrs. Bill Thomas
Mr. and Mrs. G. Rick Thomas
Mr. and Mrs. Michael Thomas
Dr. and Mrs. Francis Thompson
Mr. and Mrs. J. Thomas Touchton
Mr. and Mrs. W. J. Turbeville, Jr.

Mr. and Mrs. J. Arthur Turner, Jr.
Mr. and Mrs. Ted C. Van Antwerp
Mrs. C. C. Milo Vega
Mr. and Mrs. Leslie Warner
Mr. and Mrs. Malcolm K. Westly
Mr. and Mrs. J. H. Williams, Jr.
Mr. and Mrs. Roland A. Wilson, III
Mr. and Mrs. Jack W. Winter
Mr. and Mrs. John M. Wolfe
Anonymous
Anonymous

Special Friends of the Minaret Society

Aboly Foundation
Ad Image
Alco Standard Foundation
Associated Outdoor Clubs, Inc.
The Chisellers
Cigar Manufacturers Association
Citibank, N.A.
Conn Memorial Foundation
Connecticut General Insurance
Corporation
Conoco, Inc.
Diaz, Seckinger & Associates
Dun and Bradstreet Companies
Foundation
Eastman Kodak Company
Edyth Bush Charitable Foundation
Ernst and Whinney
Exchange National Bank of Tampa
First National Bank of Florida
Flagship Bank of Tampa
Florida Downs and Turf Club
Florida Independent Colleges
Foundation
Florida Steel Corporation
Freedom Federal Savings and Loan
Association
Gardiner, Inc.
General Telephone and Electronics
Foundation
General Telephone Company of Florida
Honeywell Foundation
Independent Life and Accident Insurance
Company
Jefferson-Pilot Corporation
Lykes Brothers, Inc.
Maas Brothers
Metropolitan Bank
Mrs. Clare O'Donnell
Polish Heritage Foundation
Saunders Foundation
Sears, Roebuck Foundation
Shell Companies Foundation
Tampa Alpha Chapter,
University of Tampa National
Alumni Association
Tampa Electric Company
Tampa Jai-Alai
Tampa New Auto Dealers Association
Theodore Lesley Estate
The Tribune Company
WFLA
William F. Poe Foundation
Winn Dixie Foundation

*Denotes Minaret Society



Board of Trustees

*Mr. G. Robert Blanchard
 *Mr. Thomas E. Bronson
 *Mr. Doyle E. Carlton, Jr.
 *Dr. Richard D. Cheshire
 Mr. H. L. Culbreath, Jr.
 *Mr. Charles M. Davis, Sr.
 *Mr. Louis de la Parte
 *Mr. A. L. Ellis
 *Mr. Robert F. Ensslin, Jr.
 Mrs. Louis Ferguson
 *Mr. James L. Ferman, Jr.
 *Mr. Herbert J. Friedman
 *Mr. John Germany
 *Mr. James W. Gray, Jr.
 *Mr. G. Richard Griffen
 Mr. Frank W. Harvey
 Mr. George W. Harvey, Jr.
 *Mr. Max H. Hollingsworth
 Mr. David C. G. Kerr
 *Mr. William A. Krusen
 *Mr. Fred D. Learey
 Dr. Joseph A. Martineau
 *Mr. Herbert G. McKay
 *Mr. Frank L. Morsani
 *Mr. Harris H. Mullen
 *Mr. J. Ross Parker
 *Mrs. Barbara Romano
 *Mr. Frederick M. Rothenberg
 *Mr. Hugo Schmidt
 Mr. T. Terrell Sessums
 Mr. Elden T. Smith
 Mrs. Marlene Smith
 *Mr. George M. Steinbrenner, III
 *Mr. Michael Thomas
 *Mr. Robert Thomas
 *Mr. J. Thomas Touchton
 *Mr. W. J. Turbeville, Jr.
 Mr. Leland T. Waggoner
 *Mr. J. H. Williams, Jr.
 *Mr. John M. Wolfe

Dr. Peter O. Knight, IV
 *Mr. H. Grady Lester, Jr.
 *Mr. Colin Lindsey
 *Mr. Ben Lynn
 *Mr. James F. Mellon
 *Mr. Joseph D. Midulla, Jr.
 *Mr. J. B. Hamner Miller
 Mr. John C. Mills
 Adm. R. Brevard Moore
 Mrs. Anne Murphey
 Mr. William F. Poe
 Mr. Emilio G. Pons
 Dr. Ernest Reiner
 *Mr. Jack Romano
 Mr. Jeremy P. Ross
 *Mr. Mandell Shimberg
 Mr. W. J. Smalley
 Mr. Chesterfield H. Smith
 Mr. William Reece Smith, Jr.
 Mr. Melvin S. Stein
 *Mr. Paul A. Straske
 Mr. Joseph W. Taggart
 Mr. C. W. Thaxton
 Mr. Albert L. Trayner, Jr.
 Mr. John R. Trinkle, Jr.
 Mr. Robert S. Trinkle
 *Mr. Gilbert E. Turner
 *Mr. J. Arthur Turner, Jr.
 Mr. James R. Turner
 Mr. Milo Vega
 *Mrs. C. C. Milo Vega
 Mr. J. W. Warren, III
 Mr. Edward West
 Mr. Arthur W. Wiggins, Sr.
 *Mr. Roland A. Wilson, III

HONORARY FELLOWS

Dr. David M. DeJo
 Mrs. David M. DeLo
 *Mrs. David A. Falk

Board of Counselors

Mr. Ralph L. Andretta
 Mr. Michael D. Annis
 Mr. W. Dehart Ayala, Jr.
 Mr. Michael L. Carrere
 Mr. C. Frank Chunn, Jr.
 Mr. Joseph W. Clark
 Mr. W. Allen Clifford
 Mr. Robert W. Compton
 Mr. Douglas P. Cone, Jr.
 Mr. S. L. Cooksey
 Mr. J. David Cowart, Jr.
 Mr. H. Lee Culbreath, III
 Mr. Alberto de Alejo, Jr.
 Mr. Rodney A. DeHaan
 Mr. O. Fred Dobbins
 *Mr. Cecil E. Edge, Jr.
 Mr. J. Eugene Fogarty, Jr.
 Mr. Stapleton D. Gooch, IV
 Mr. Dana M. Groff
 Mr. Mark Gruetzmacher
 Mr. H. Thomas Hall, III
 Mr. Wiley S. Hazel, Jr.
 Mr. Thomas N. Henderson, III
 Mr. Thomas F. Icard, Jr.
 Mr. F. R. LeVarge
 Mr. William H. McBride, Jr.
 Mr. Charles McKay
 Mr. Graham McKeel
 Mrs. Susan S. McLain
 Mr. J. S. McMullen
 Mr. William R. Platt

Mr. William F. Poe, Jr.
 Mr. Donald A. Regar
 Mr. Robert C. Rice, Jr.
 Mr. Edward O. Savitz
 Mr. Marvin H. Scott, Jr.
 Mr. Stephen H. Sears
 Mr. Lee B. Sierra
 Mr. Norman Stallings, Jr.
 Dr. Dirk W. R. Suringa
 Mr. Stephen W. Swindal
 Mr. Richard C. Swirbul
 Mr. Robert E. Taylor
 Dr. John C. Toole
 Mr. J. Edgar Wall, III
 Mrs. Jo F. Waters
 Mr. David B. Weir
 Mr. Jon W. West
 Mr. J. Hulon Williams, III
 Mr. L. Phil Woods, Jr.
 Mr. O. Boyd Wynne, III
 Ms. Gwynne A. Young
 Mr. William T. Young, Jr.
 Dr. Carl L. Zielonka

Dr. Samuel E. Brick
 Mr. Donald R. Britt
 Broadway National Bank
 Burdines
 Mr. and Mrs. Calvin W. Carter
 Mr. and Mrs. Mack T. Christian
 Mr. and Mrs. W. Scott Christopher
 Mr. and Mrs. Fred B. Church, Jr.
 Mr. and Mrs. R. M. Clewis, Jr.
 Mr. and Mrs. W. Allen Clifford
 Colony Shops of Florida, Inc.
 Combustion Engineering, Inc.
 Mr. and Mrs. J. T. Compton
 Mr. John Condrick
 Mr. James E. Connell
 Mr. Robert W. Cook
 Mr. and Mrs. Richard B. Cooper
 Dr. and Mrs. James W. Covington
 Crompton and Knowles Foundation
 Crown Industries, Inc.
 Mr. and Mrs. H. L. Culbreath
 Dwight Darby and Company
 Mr. and Mrs. Alberto de Alejo, Jr.
 Mr. and Mrs. L. G. de la Vergne, Jr.
 Dr. and Mrs. David M. DeLo
 Mr. Nicholas J. Dennis
 Mr. and Mrs. Eugene B. Dodson



Century Club

Mrs. Lydia M. Acosta
 Ad-Print
 Mr. Sam Agliano
 Arthur Andersen & Co. Foundation
 Mr. and Mrs. Ralph L. Andretta
 Anheuser-Busch, Inc.
 Mr. and Mrs. Michael D. Annis
 Atlantic Bank
 Mr. and Mrs. Sam M. Bailey
 Mr. Mark J. Ball
 Captain and Mrs. Robert E. Bassler
 Beach Products, Inc.
 Belcher Oil Company
 Mr. and Mrs. Lee M. Bentley
 Mr. Wallace W. Blackburn
 Mr. and Mrs. Russell S. Bogue
 Mr. and Mrs. Talbot C. Boudreau
 Mr. and Mrs. John H. Boushall, Jr.

Mr. Robert Dougherty
 Dulin Brokerage Company
 Mr. and Mrs. Edwin A. Dunn, Jr.
 Mr. and Mrs. Ray F. Ellis
 Mr. Paul S. Elsberry
 Mrs. Elizabeth Enlow
 Mr. and Mrs. James Farren
 Mrs. Louise Lykes Ferguson
 Mr. Felix Figueroa
 Mr. and Mrs. Forest T. Fenton
 First National Bank of Clearwater
 Mrs. Harriet J. Fisher
 Food Equipment and Supply Company
 Mr. and Mrs. Duncan M. Fort
 Foster and Kleiser
 Free Press Publishing Co., Inc.
 Mr. Robert H. Frey
 Mr. James R. Galbraith, Jr.
 GTE Data Services
 Mrs. Bette D. Gifford
 Mr. William A. Gillen

Board of Fellows

*Mr. Alfred S. Austin
 *Mr. William J. Barritt, Jr.
 Mr. Lee M. Bentley
 *Mr. Charles W. Birdsong
 Mr. Russell S. Bogue, Jr.
 Mr. Talbot C. Boudreau
 Mr. John H. Boushall, Jr.
 Mr. Jacob F. Bryan, III
 *Mr. Gordon W. Campbell
 Mr. Calvin W. Carter
 Mr. Fred F. Church, Jr.
 Mr. Jack T. Compton
 *Mr. George D. Curtis, Jr.
 *Mr. Harold H. Davis
 *Mr. Sam F. Davis
 Mr. L. G. de la Vergne, Jr.
 Mr. Eugene B. Dodson
 *Mr. William F. Ebsary
 Mr. Raymond F. Ellis
 *Mr. James L. Ferman, Sr.
 Ms. Joanne Frazier
 *Mr. William B. Haggerty
 Mr. Benjamin H. Hill, III
 Dr. Richard S. Hodes
 Dr. G. Truman Hunter
 Dr. James M. Ingram
 *Mr. John W. Kercher, III
 Mr. Max W. Kinley

Mr. Stapleton D. Gooch, IV
 Ms. Lucille Gossett
 Govin's, Inc.
 Graybar Electric
 Mr. John P. Grimner
 Groff Industries, Inc.
 Mr. John A. Guyton, Jr.
 Mrs. Jeannie M. Trice Hall
 John Hammer Foundation
 Mr. George W. Harvey, Jr.
 Dr. Robert D. Henderson
 Mr. and Mrs. Benjamin H. Hill, III
 Mr. Lewis H. Hill, III
 Mr. Robert D. Hill
 Hillsboro Bank
 Hillsboro Printing
 Hillsboro Sheet Metal
 Mr. and Mrs. Edward I. Howell
 Dr. and Mrs. G. Truman Hunter
 International Business Machines Corp.
 Mr. William W. Jay
 Jimmy's Sod Company
 Kappa Delta Pi
 Mr. Robert J. Kaufmann
 Mr. Fred H. Kenfield
 Mr. and Mrs. David C. G. Kerr
 Kerr-McGee Foundation, Inc.
 Mr. Frank Kimbro
 Mr. and Mrs. Max W. Kinley
 Ms. Kathryn L. Knecht
 Mr. Peter O. Knight
 Mrs. Arnold C. Kotler
 Mr. Wolf A. Lederer
 Mrs. Eleanor Lehner
 Mrs. Rebekkah H. Leonard
 Mr. and Mrs. F. R. LeVarge
 Mr. George A. Levy
 Loren M. Berry Foundation
 Mr. David A. Luhrsén
 MMX Corporation
 Mr. W. C. MacInnes
 Mr. Thomas M. Macioce
 Mallinckrodt Fund, Inc.
 Dr. and Mrs. Joseph A. Martineau
 Dr. Miguel A. Martinez-Corpas
 Mr. and Mrs. Morley Mathewson
 Dr. Edward E. McCollum
 Mr. and Mrs. F. Graham McKeel
 Mr. Cesar Medina
 Mr. Philip J. Meloy
 Mr. and Mrs. Jay P. Miller
 Mr. and Mrs. Blair G. Mills
 Mr. and Mrs. John C. Mills, Jr.
 Mr. and Mrs. Carl W. Moeller
 Morrison Incorporated
 Dr. and Mrs. R. Jack Munyan
 Mrs. David R. Murphey, III
 Mr. Jozsef Nadudvary
 Mrs. Norma L. Noble
 Mr. and Mrs. Daniel O'Donnell
 Mr. David P. O'Donnell
 Ms. Ellen O'Donnell
 Mr. Angel Oliva
 Ms. Fay Pachler
 Mr. and Mrs. William P. Patterson
 Mr. Mickey L. Payne
 Peat, Marwick, Mitchell and Company
 Peoples Bank of Tampa
 Peoples Gas System
 Dr. and Mrs. G. J. Perdigon
 Mr. and Mrs. Paul C. Pinson
 Poe and Associates
 Mr. Emilio Pons
 Dr. Dennis F. Pupello
 Dr. Philip F. Quinn
 Radiant Oil Company
 Mr. and Mrs. Arthur C. Ramm
 Mr. Anthony J. Raso

Mr. and Mrs. Donald A. Regar
 Mr. Kenneth J. Reid
 Dr. and Mrs. Ernest A. Reiner
 Mr. and Mrs. Robert C. Rice, Jr.
 Riverside Hilton Inn
 Ben H. Roberts Produce, Inc.
 Mr. and Mrs. Daniel Rosenbaum
 Salomon Brothers Foundation, Inc.
 Mr. William A. Sandman
 Mr. and Mrs. Joseph F. Santoiana, Jr.
 Mr. Robert E. Scott
 Scottish Rite Foundation, U.S.A.
 Mr. and Mrs. Stephen H. Sears
 Seminole Bank of Tampa
 Mr. and Mrs. T. Terrell Sessums
 Mr. Henry Shell
 Mr. and Mrs. Mark Shine
 Smalley Transportation Company
 Mr. and Mrs. Chesterfield H. Smith
 Dr. and Mrs. Elden T. Smith
 Mr. and Mrs. Victor S. Smith
 Dr. and Mrs. Wayne L. Smith
 SmithKline Corporation
 Mr. and Mrs. Norman K. Snook, Jr.
 Southeast Bank of Tampa
 Southeast Bank of Westshore
 Southern Mill Creek Products
 Sperry Microwave Electronics
 Stars of the Future, Inc.
 Mr. Norman Stallings, Jr.
 Mr. and Mrs. Frank Stokes
 Ms. Fay F. Sumner
 Sun Bank of Tampa
 Thompson and Company

Mr. and Mrs. Dana R. Todsén
 Dr. and Mrs. John C. Toole
 Mr. and Mrs. John R. Trinkle, Jr.
 Mr. and Mrs. Robert Trinkle
 Col. and Mrs. Walter Turner
 Union Oil Company of California
 Mr. and Mrs. Herman J. Valdes
 Mr. and Mrs. Ronald P. Vanni
 Mr. and Mrs. Milo Vega
 Ver-Mar Plating, Inc.
 Mr. Leland T. Waggoner
 Mr. E. H. Ware
 Mr. and Mrs. J. W. Warren, III
 Mr. David B. Weir
 Westshore Glass Corporation
 Mr. and Mrs. James W. Whitehead
 M. E. Wilson Company, Inc.
 Mr. and Mrs. William S. Wilson
 Mr. and Mrs. Philip D. Winn
 Winn-Dixie Stores Foundation
 Mr. and Mrs. Bernard A. Wood, Jr.
 Mr. and Mrs. O. Boyd Wynne, III
 Mr. Edward R. Young
 Dr. and Mrs. Carl L. Zielonka

Anniversary Club

Mr. and Mrs. James C. Abruzzino
 Aetna Life and Casualty Foundation
 Mr. William H. Ailor, Jr.
 Mr. and Mrs. Benson Alexander

Mr. and Mrs. Walter M. Cline
 Mr. Maurice L. Conner
 Lt. Col. Alvin L. Cooleidge
 Mr. Edmund G. Correia
 Mr. and Mrs. Rodney A. DeHaan
 Mr. Robert Delgado
 Mr. and Mrs. Alfonso Dolcimascolo
 Mr. Gilmore A. Dominguez
 Mr. John J. Driscoll
 Mr. Hampton Dunn
 Mr. F. R. Edney
 Electric Supply
 Dr. and Mrs. Marlon L. Ellison
 El Encanto Cleaners
 Dr. Herman E. Fisher
 Flanagan-Metcalf, Inc.
 Florida Roofing and Metal Works
 Mr. Duncan M. Fort, Jr.
 Mr. and Mrs. J. Warren Frazier
 Mr. and Mrs. Victor H. Fresh
 Mr. and Mrs. Melvin Garten
 Gilman Paper Company
 Mrs. Dorothy T. Glover
 Ms. Beverly M. Haas
 Mr. Kenneth G. Haggerty
 Mr. and Mrs. Cyril V. Handley
 Mr. David P. Hansma
 Mr. Thomas H. Harris
 Mr. Donald C. Hatch
 Mr. and Mrs. Wiley S. Hazel, Jr.
 Mr. and Mrs. Thomas N. Henderson, III
 Mr. Stephen Hess
 Mrs. Carlisle C. Hutchinson
 Dr. and Mrs. James M. Ingram
 Jacobs-Fendig
 Mr. Elmer J. Krauss
 Mr. Nobuaki Kunimura
 Mr. Harold E. Lawber
 Mr. and Mrs. Charles E. Lawton
 Mr. and Mrs. Robert D. Leibforth, Jr.
 Dr. William D. Leith
 Mr. Norman G. Light
 Mr. Byrne A. Litschgi
 Mr. Scott K. Mahlum
 Mr. Charles H. Martin
 Ms. Vera T. Mansfield
 Mr. John R. Mason, Jr.
 Mr. William H. McBride, Jr.
 Mrs. Norma McCumber
 McElvy, Jennewein, Stefany and Howard
 Mr. and Mrs. Joseph A. Miller
 Mr. and Mrs. Ashby Moody
 Dr. Shirley P. Myers
 Pan American Bank
 Mr. and Mrs. Andrew Pink
 Mr. and Mrs. William R. Platt
 Mr. William F. Poe, Jr.
 Mrs. Margaret E. Ragg
 Mr. William Matthew Rea
 Mrs. Joanna M. Rogers
 Mr. and Mrs. Jeremy P. Ross
 Mr. Wendell D. Russell
 Mrs. Mary E. Shaffer
 Mr. and Mrs. James D. Smalley
 Mr. Bruce M. Smith
 Mr. Gerald H. Stead
 Mr. and Mrs. Melvin S. Stein
 Mr. Gene Stewart
 Mr. and Mrs. Robert Lee Taaffee
 Mr. Lewis W. Tougaw
 Dr. and Mrs. Michael H. Truscott
 Mr. Segundo A. Vior
 Mrs. Lamar E. Wardell
 Mr. and Mrs. James F. Waters
 Mr. and Mrs. Edward H. West
 Mr. J. Hulon Williams, III
 Jerry Williams Inc.
 Mr. Lem P. Woods, Jr.



Superior Pontiac — GMC, Inc.
 Dr. and Mrs. Dirk W. R. Suringa
 Sutton Distributing Company
 Mrs. Sally Sweat
 Swindal-Powell Company
 Mr. James Taggart
 Tampa Coca-Cola Bottling Company
 Tampa Federal Savings and Loan
 Tampa Wholesale Plumbing
 Supply Corp.
 Tate Electric
 Dr. and Mrs. John D. Telfer
 Mr. and Mrs. C. W. Thaxton

Auto Safety Company, Inc.
 Mr. and Mrs. DeHart Ayala, Jr.
 Mr. and Mrs. Herman Bachman
 Mr. William Kendall Baker
 Mr. Mervin Beattie
 Mr. Michael S. Benner
 Mr. W. W. Bennett, Jr.
 Mr. John Bristol
 Mrs. Lydia E. Burguet
 Mr. and Mrs. D. C. Burnham
 Mr. Robert A. Burwell
 Mr. Peter A. Cammick
 Mr. and Mrs. Michael L. Carrere

Friends

Ms. Pamela Ahlen
Mr. Gus J. Alfonso
Mr. Patrick M. Allen
Mr. Braulio Alonso
Mr. Leonard N. Altamura
Ms. Margaret R. Amo
Mr. Carl Roy Anderson
Mr. James E. Andrews
Mr. and Mrs. Joseph Andrews, Jr.
Mrs. John Annis
Dr. and Mrs. Leonard Annis
Mr. Art Arbutine
Mr. Ruben Ares
Mr. John L. Argerious
Mr. Robert Ashmead
Mrs. Patricia Badowski
Mr. Victor E. Baffa
Mr. David W. Baker
Mrs. Gustav A. Bartz
Mr. Dean Bates
Honorable Robert E. Beach
Mr. William R. Beam
Mrs. Betty Beiser
Dr. Lois Benjamin
Ms. Mary Benten
Mrs. Patricia Benz
Mr. Matthew Bernard
Mr. Patrick Biber
Dr. Wade G. Birch
Mr. George L. Blanco
Mrs. Clementina Bode
Mr. Joseph P. Bobo, Sr.
Mrs. Rita Bodo
Ms. Madelyn G. Body
Dr. Judith M. Bohren
Mr. J. C. Bold
Mrs. Anita Boos
Mr. and Mrs. Thomas M. Boyle
Mr. Edgar B. Bradley, Jr.
Mr. Gerald W. Bradley
Ms. Honora Bradley
Ms. Ruth C. Bragg
Mr. Warren W. Brainerd, Jr.
Mr. and Mrs. Donald F. Brasier
Mrs. Edna B. Brazenor
Mr. and Mrs. Peter J. Breijo
Mr. Robert Brenner, Jr.
Dr. and Mrs. Chester L. Brisley
Mrs. Dorothy Brown
Mr. Leonard Brown
Major and Mrs. John M. Bruce, Jr.
Mr. William C. Buchanan
Mr. and Mrs. Bill Bullard
Mr. Perry C. Bullard
Mr. Joe C. Bunch
Lt. Col. Walter M. Burkett
Mr. Joseph E. Burnside
Mr. Thomas C. Burwell, Sr.
Ms. Bernardine A. Butler
Mr. and Mrs. Wilbur Byerley
Mrs. Alice A. Campion
Mr. Joe Cannata
Mr. and Mrs. Sam Capitano, Jr.
Mr. Barry D. Carleen
Mr. Willie Carrol
Ms. Marvete Carter
Mr. and Mrs. Edward Casella
Mr. Fielding T. Cassels
Mr. Karl J. Catob
Mr. Earl D. Caton
Major Michael J. Cestaro
Mr. Howell H. Chambers
Mr. Michael A. Chamoun
Mr. Robert G. Chilton, Sr.
Mr. and Mrs. Gary C. Christy

Mr. and Mrs. C. Frank Chunn
Mr. Chester W. Clark, Jr.
Mr. John Casey Clark
Mr. Joseph W. Clark
Ms. Betty J. Cole
Mr. and Mrs. Robert W. Compton
Mrs. A. G. Condon, Jr.
Mr. Douglas P. Cone, Jr.
Mr. J. L. Cone, Jr.
Mr. William R. Conover, III
Ms. Marlyn R. Cook
Mr. Sehon L. Cooksey
Dr. Eugene J. Cornett
Mr. Edmund G. Correia
Mr. J. D. Cowart
Mrs. Linda K. Cox
Mr. E. L. Cranford, Jr.
Mr. Gino Crescenzi
Lt. Col. Marcus E. Crisman
Mr. and Mrs. Eugene H. Cropsey
Miss Barbara L. Cross
Mr. and Mrs. H. Lee Culbreath, III
Mrs. Louise Cullen
Mr. and Mrs. Daniel R. Curbelo
Mr. Robert A. Cushen
Dr. William W. Cyzewski
Mr. Tramel James Dailey
Dr. George R. Dam
Daniel Construction Company
Mrs. Alys T. Daniel
Mrs. Gertrude Darden
Ms. Jeannette L. Darling
Mr. and Mrs. Dudley W. Davis
Mr. H. E. Davis, Jr.
Mr. William R. Day
Mr. Jack Dayan
Mrs. Bessie Juanita Dean
Mr. Robert E. Dean
Mr. and Mrs. Robert Delf
Ms. Carmen DePaula
Dr. Dale W. DeWild
Mr. and Mrs. Joseph H. Diaz
Mr. Edwin B. Dickson
Mr. and Mrs. Robert Dille
Mr. and Mrs. O. Fred Dobbins
Mr. S. Edward Dobbins
Mr. Arnold R. Donaldson
Mrs. Janice B. Dragona
Mr. and Mrs. Joseph L. Duncan, Jr.
Mr. Frank J. Dykeman
Ms. Linda J. Eagle
Mr. James M. Eikeland
Mrs. M. Leo Elliott, Jr.
Mrs. B. W. Elsberry
Dr. and Mrs. John E. Enell
Mrs. Louise W. Erk
Mr. William D. Evans
Mr. Thomas E. Feaster
Mr. Willard Fein
Dr. James A. Fellows
Mr. and Mrs. Arthur H. Fernandez
Ms. Deltina Fernandez
Dr. Eustasio Fernandez
Mr. and Mrs. Ronald J. Fernandez
Ms. Marie Ferro
Dr. James M. Fesmire
Dr. Edwin J. Ficarrota, Jr.
Mrs. Harriet J. Fisher
Dr. Lawrence T. Fitzgerald
Florida Power Corporation
Mr. and Mrs. J. Eugene Fogarty
Mrs. Lucille F. Ford
Mr. and Mrs. H. H. Fortner, Jr.
Mr. and Mrs. Robert C. Fokett
Mr. and Mrs. Dale E. Friend
Mr. Tom Frinzi
Mr. John F. Frost
Mr. and Mrs. Alland G. Fry

Miss Paula Fry
Mrs. Myrtle C. Fuller
Mr. and Mrs. Wyckliffe S. G. Furcon
Mr. Gary E. Garbis
Mr. Louis Garcia
Mr. Preston T. Garrett
Mr. and Mrs. M. E. Gerwe
Ms. Pat Gillette
Mr. Gerald L. Gillis
Ms. Winifred H. Gilman

Lt. Col. Gove Johnson
Mr. Robert Johnson
Mr. Sigfrid N. Johnson
Mrs. Jean Johnston
Mr. Arthur A. Jones
Mrs. Betty Jones
Mr. Charles B. Jones
Mrs. Essie Jones
Mr. and Mrs. John A. Jones
Mr. and Mrs. Norman E. Jones



Dr. Carolyn Gingrich
Mrs. Jose I. Gonzalez
Mrs. Julia Gonzalez
Mr. Peter Gonzalez
Mrs. John S. Goodson, Jr.
Ms. Candy Gorra
Mr. Larry I. Gramovot
Mrs. Miriam D. Green
Mr. Jerrold W. Gregory
Greiner Engineering
Mr. and Mrs. B. L. Griffin
Ms. Emma Groom
Mr. and Mrs. F. F. Groseclose
Mr. Mark D. Gruetzmacher
Dr. and Mrs. Richard H. Gude
Mr. and Mrs. Charles Hach
Mr. Robert O. Hach
Mr. John Haefeli
Mr. H. Thomas Hall, III
Hamil Company
Mr. and Mrs. John A. Hancock
Ms. Margaret B. Harmon
Mrs. Margaret B. Harris
Mr. James D. Harrison
HARSCO Corporation Fund
Mr. and Mrs. George W. Harvey
Mr. John D. Hassett
Ms. Belle D. Hayden
Mrs. Sandra Haynes
Mr. and Mrs. Walter C. Heinrich
Mrs. Iris A. Helveston
Mr. Ellis Hill
Dr. and Mrs. Richard S. Hodes
Mrs. Dolores A. Hoffman
Mrs. Frances S. Hoffman
Mrs. Alma Hollinger
Mr. Eugene A. Homer, Jr.
Mr. Alonso A. Hubbard
Mr. Frank Douglas Hutchins
Mr. Thomas F. Icard, Jr.
Mr. William A. Imel
Independent Forms Associates
Mr. and Mrs. J. F. Jericho
Mr. and Mrs. Francis E. Johnson

Mr. Freddie Judge
Mr. and Mrs. Kenneth K. Kackley
Mr. and Mrs. Walter F. Kahne
Ms. Bertha Kallio
Miss Maureen Kearney
Dr. Jesse L. Keene
Dr. Carol Keller
Mr. R. F. Kellow
Mr. Kent Kemp
Ms. Mary R. Kendall
Mr. E. T. Kendrick
Ms. Elizabeth Kercher
Mr. Joseph H. Kerr
Mr. and Mrs. Dale Keyser
Ms. Kim E. Kilpatrick
Mr. Dennis King
Ms. Florence A. Kissling
Mr. C. R. Klein
Mr. Dale S. Kleinfelder
Mrs. Charlotte Klett
Mr. Jeffrey W. Kling
Mrs. Elsie C. Kohler
Ms. Constance L. Kone
Ms. Angela M. Konen
Mr. Walter Koss
Mr. Anthony L. Kovach, Jr.
Mr. and Mrs. Leslie J. Kramer
Mr. Stephen J. Krist
Ms. Sophie T. Kurtz
Mrs. Mildred Land
Mrs. Peggy B. Lang
Mr. Jarrette E. Langston, Jr.
Mr. David Lauder
Ms. Frances Laverghetta
Mrs. Ruth Lawson
Mrs. Alice C. Lawton
Learning in Focus
Mr. William G. Leavell
Mrs. Rebecca F. Leibowitz
Dr. Louise C. Leonard
Mr. and Mrs. Phillip Leto
Mr. Edward C. Levine
Levittown Medical Center LTD
Mr. Milton Lewis

Ms. Ann Lindeman
Major Michael A. Lindquist
Ms. Beverly Ann Lindsay
Mrs. Jennie C. Locicero
Mr. Carlo D. Losco, III
Mr. Mark J. Lowit
Ms. Jewel H. MacLear
Mr. Raydell Maddix
Mr. Juan Mallea
Ms. Flora M. Manheimer
Mr. Frank P. Maniscalco
Mr. Don Marinelli
Ms. Renata Martynienko
Mr. and Mrs. H. E. Mason
Mr. and Mrs. Richard R. Massey
Mr. Durward L. Matthews
Mr. and Mrs. Russell F. McCallister
Mr. Thomas H. McDonald
Ms. Fay S. McGaughey
Mr. Charles A. McKay
Mrs. Richard S. McKay
Ms. Maureen A. McKeever
Mr. Richard C. McKenzie
Mrs. Susan S. McLain
Mr. Jack A. McMillin
Mr. and Mrs. J. S. McMullen
Mr. James McPhail, Sr.
Mr. and Mrs. David W. Meachum
Mrs. Valerie S. Mecutchen
Mr. Bernardo J. Mendez
Mr. and Mrs. Stephen F. Miketic
Mr. Frank A. Milam, Jr.
Mrs. Dorothy J. Miller
Mr. Thomas A. Miller, Sr.
Mr. Robert Miloshevsky
Mr. and Mrs. Walter V. Minahan
Mr. and Mrs. George K. Mitchell
Mrs. Mary D. Miyares
Mr. Robert D. Mohr
Ms. Josephine N. Montes
Miss Barbara Mae Moore
Mrs. Elizabeth Moore
Mr. and Mrs. T. D. Moore
Mrs. Donald E. Morris
Mr. and Mrs. H. W. Morris, Jr.
Mr. and Mrs. H. A. Moshell, Jr.
Mr. Robert A. Munz
Mr. Clarence L. Murphy
Mrs. Anna Murray
Mrs. Adrienne M. Napoli
Mrs. Anna Noya
Mr. Milagro Nunez
Mr. Donald J. Nunley
Mrs. Bernard C. Oakes
Mr. and Mrs. Joseph B. Obusek
Mr. Rudolph R. Odermatt
Mrs. Anne E. O'Grady
Mr. Dennis O'Kain
Olsten's of Central Florida, Inc.
O'Neal Steel, Inc.
Mr. and Mrs. Donald E. O'Neal
Mr. and Mrs. Manuel D. Onis
Mr. Joseph P. Orlando
Mr. Guy W. Otto
Mr. Jose R. Oural
Ms. Willie Mae Owens
Mrs. Margaret Palmer
Mr. Domingo Pazo
Mr. Edmund A. Peck
Mr. Arthur D. Pepper, III
Mr. Tim Pelot
Mr. Michael R. Pender, Jr.
Mr. and Mrs. Morris J. Pennock
Mr. Nolberto Perez
Mr. and Mrs. Frank Pernas
Reverend Paul A. Perrine, Jr.
Mr. Howard N. Phillips
Dr. J. Richard Piper

Mr. Stanley Pleckas
Mr. and Mrs. Hoyt Plumley
Major and Mrs. James C. Pollard
Mr. Emilio Pons
Mr. Michael Edwin Posch
Mr. Joseph Pottebaum
Ms. Evelyn Potter
Mr. Thomas L. Powell
Mr. Robert M. Radlein
Dr. Margaret H. Raffa
Mrs. Margaret E. Rahner
Miss Joan A. Ramaglia
Mr. John Redding
Mrs. Irene A. Reed
Mrs. G. L. Reeves
Ms. Edna Rhem
Mr. Ray Rio
Mr. Ellis S. Roberts
Mr. James C. Roberts
Mrs. Nancy J. Robertshaw
Mr. Mark I. Rockaway
Mr. David Rodriguez
Mr. Jack N. Rodriguez
Mr. Juan Rodriguez
Mrs. Mary B. Rumph
Miss Gloria Runton
Mr. Samuel C. Russell
Mr. Joseph R. Ryan
Dr. and Mrs. Herman J. Saatkamp
Mrs. Barbara Sable
Mr. Jose M. Sanchez
Mr. Julio Sanchez
Mr. Robert San Martin
Mr. Edward O. Savitz
Dr. Mary Jane Schenck
Mrs. Dorothy T. Schiro
Ms. Dolores Schjaastad
Dr. and Mrs. Raymond Schlueter
Dr. J. Leon Schwartz
Mr. and Mrs. Marvin H. Scott, Jr.
Mr. James W. Seal
Mr. Frank V. Selph
Mr. Joseph A. Seminara
Mr. Rene Serralles
Mrs. Mary Shaffer
Mr. Ernest E. Siek
Mr. and Mrs. Lee B. Sierra
Mr. William E. Silver
Ms. Olivia Simmons
Mrs. Alberta Simpson
Mrs. Marjorie D. Singer
Mr. Hansel Singletary
Ms. Nicola C. Sirianni
Mrs. G. Dexter Sloan
Mrs. Benjamin Smith
Dr. Douglas C. Smith
Ms. Juanita A. Smith
Mr. Vincent Smith
Mrs. Victoria M. Spain
Mr. and Mrs. Harold Stafford
Mrs. Janice D. Staley
Mrs. Diana J. Stanley
Mr. and Mrs. Richard M. Starns, Jr.
Mr. and Mrs. Ralph Steinberg
Ms. Lily Stephan
Mr. Jackson C. Stevens
Ms. Laurel A. Stewart
Dr. and Mrs. William D. Stewart
Mr. Richard A. Stokes
Mr. Wilanne S. Stowe
Mr. Frank L. Straner
Mrs. Suzanne Sutker
Mr. Stanley J. Swanson
Mr. Stephen W. Swindal
Ms. Marie I. Swingley
Mr. and Mrs. Richard C. Swirbul
Mrs. Naomi T. Symmes
Mr. John W. Syron, Jr.

Mr. and Mrs. Joseph W. Taggart
Mr. and Mrs. J. H. Tanner
Mr. and Mrs. James G. Tarwater
Mr. and Mrs. Carl H. Taylor
Mr. and Mrs. Robert E. Taylor
Mr. and Mrs. Elliott Tepper
Mr. and Mrs. Robert J. Terri
Mr. Charles Thomas
Mr. Frederick M. Tibbitts, Jr.
Mrs. Sue S. Tihansky
Ms. Patricia H. Tomasino
Mr. Albert L. Trayner, Jr.
Msgt. James A. Troche
Dr. and Mrs. Stanton H. Truxillo
Ms. Maxine T. Tucker
Mr. James E. Turner
Mr. James R. Turner
Judge and Mrs. W. Rogers Turner
Mrs. Charlotte E. Umholtz
University of Tampa Women's Club
Mr. and Mrs. Richard A. Valeri
Mr. and Mrs. William Vallette
Mrs. Dorothy Van Balen
Dr. and Mrs. Edward Van Eepoel
Lt. Col. Nicio Vega, Jr.
Ms. Lillian Vesely
Mr. Leonard J. Vidal
Dr. Eric Vlahov
Mr. and Mrs. Karl A. Vogeler
Mrs. Dianna J. Wade
Mr. Mark J. Waite
Dr. Charles R. Walker
Mr. William F. Walker

Mr. J. Edgar Wall, III
Mr. Sterling Wardwell
Mrs. Kathryn Warner
Mr. Robert D. Warren
Major Warren S. Watkins
Mr. and Mrs. Ansley Watson
Mr. W. Bryan Webb
Ms. Grace West
Mr. and Mrs. Jon West
Westinghouse Electric Corporation
Mr. and Mrs. Ellis Wheatley
Mrs. Jessica L. Whitman
Ms. Diane Wiesenthal
Mr. and Mrs. Arthur W. Wiggins
Mrs. Frances Williams
Mr. and Mrs. George C. Williams
Mr. George H. Williams
Ms. Ann Wilson
Mr. and Mrs. George O. Wilson, III
Mr. Richard Wilson
Mrs. Retha Wimberly
Mr. and Mrs. Eugene Winters
Mr. and Mrs. Steven L. Wolfson
Mr. Ward Woolley
Ms. Mary M. Wotring
Mr. Andrew R. Wyatt
Mr. and Mrs. Manuel J. Yglesias
Ms. Gwynne A. Young
Mrs. Jane A. Young
Mr. and Mrs. William T. Young, Jr.
Mr. Henry P. Zaranski
Major Frank R. Zedar
Mr. and Mrs. William K. Zewadski







043480 01 I
L K. BASSLER SCHOLARSHIP FOUN
C/O MR ROBERT E BASSLER
4307 SWANN AVENUE
TAMPA FL 33609



The University of Tampa
401 West Kennedy Blvd.
Tampa, Florida 33606