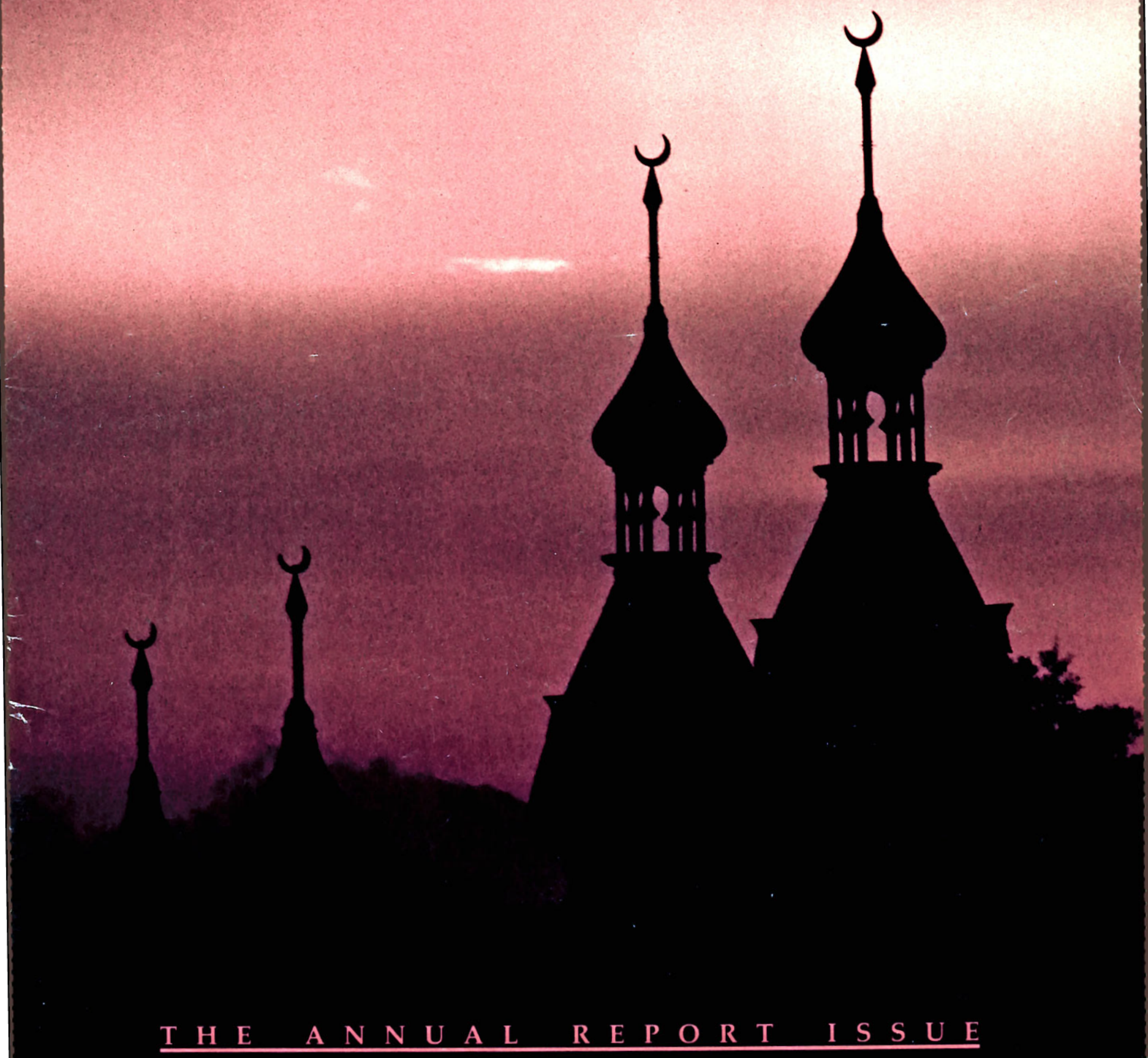


THE UNIVERSITY OF TAMPA

Journal

FOR ALUMNI & FRIENDS

VOL. VII, NO. 2 SEPTEMBER 1991



THE ANNUAL REPORT ISSUE

T A B L E O F C O N T E N T S

2



Solid Foundation

New president Dr. David G. Ruffer recounts the track record of the University in the past year as he shares his vision for the future.

8

Crowning Achievement

After nearly a decade of labor, the exterior renovation of Plant Hall will soon be complete with the restoration of the cupolas and Fletcher Lounge dome.

Read about this capstone event, and other bits of UT news, in Campus Bytes.

4



Settling In

New students from across the globe ease into the college routine during UT's weeklong orientation activities.

6

A Force to Contend With

Spartan teams burst forth on the national scene, placing in the Top 20 polls and earning a reputation for excellence in all areas of competition.



ABOUT THE COVER

The dark silhouettes of Plant Hall's minarets pierce the amber sky in this photograph taken by Atlanta photographer Tommy Thompson. A body of Thompson's work is contained in the beautiful, collector's edition of the University-commissioned book "Plant's Palace" (See page 12).



9

Glory Days

Alumni share a unique bond that bridges the gap between generations and reunites old friends who have lost touch over the years.



15

Silent Partners

The University extends its appreciation to the contributors who have made a priceless investment in the lives of UT students.

28

Play Keep-Away — IRS Style

In this day and age, there are still a couple of legal ways for investors to divorce themselves from taxable income.

29

It's a Date

Mark your calendar for some upcoming UT events, offering something of interest for everyone.



The University Of
T A M P A

Journal

The University of Tampa Journal (USPS 748-810) is published five times a year by The University of Tampa, 401 W. Kennedy Blvd., Tampa, FL 33606-1490, with issues in July, September, December, March and June. Second-class postage paid at Tampa, FL.

Grant Donaldson

Editor

Anne Rowland

Designer

Elaine Humanitzki

Writer

Contributing Writers:

Jim Kelly, Phil Hills, Gil Swalls

Contributing Photographer:

Daniel Forthuber

POSTMASTER: Send address changes to The Journal,
The University of Tampa, Box H, Tampa, FL 33606-1490.

The University of Tampa is an Affirmative Action/Equal Opportunity Employer.

From the President:

REPORT FOR THE YEAR 1990-91

THE UNIVERSITY OF TAMPA SUMMARY

The year 1990-91 was the 60th in the life of The University of Tampa. The following is a review of that year. Please share with us your comments and questions. Your continuing interest in The University of Tampa is appreciated.

Each year in the life of an organization as complex as a modern university contributes in a special way to the collective memory which forms the fabric of the community. The 1990-91 academic year will be remembered as it marked the last year in the tenure of Bruce A. Samson, the seventh person to follow Frederic Spaulding as president of The University of Tampa. President Samson joined the University community in 1986 and provided leadership until August of 1991.

His time of service will be remembered for stabilization of the fiscal circumstances, establishment of the collegiate structure, the restoration of Plant Hall and other campus facilities, the beautification of the campus, the initiation of a long-range planning process, the development of an academic enhancement program and the beginnings of new efforts in alumni relations and institutional development. The University will be better able to progress into the 21st century because of his leadership.

Academic Growth

Provost Thomas J. Hegarty reports on the several accomplishments which were directed toward our continuing efforts to strengthen the academic program.

Completion of the collegiate structure, development of the report of the task force on academic enhancement and the initiation of its recommendations, beginning of planning for the SACS accreditation visit in 1995, expansion of the Evening College, continuing work on the development of a process for outcomes assessment and efforts to improve advising were among the activities which seized the attention of the academic structure. These efforts continue to improve the already high quality of the academic programs we offer to students.



President David G. Ruffer

Related to this work, the seven-member faculty committee has been working on numerous projects intended to strengthen the University. Work with the presidential search committee, development of a revised faculty handbook and review and revision of many of the procedures included therein, adoption of the academic enhancement plan and the general business which comes before a faculty were among the items which occupied its attention.

Student-Life Services

Vice-President for Student Affairs, Jeffery Klepfer, reports an active year of programming and education in the student-affairs division. The award of a substantial grant to support our efforts in substance-abuse education was the highlight. Revision of student disciplinary procedures, the development of mechanisms through which students can come to know one another, enhancement of safety and security measures, the development of policies to protect students from sexual harassment, the creation of a Student Government Productions board to better coordinate the efforts of student activities planners, the utilization of new student spaces and the

expansion of the Peer Academic Consultant (PAC) program were other highlights of the year.

Student Recruitment

The fall semester opened with a total of 1,800 full-time students, including 690 new students, 467 of whom were freshmen. Vice-President for Admissions and Financial Aid, John Dolan, reports on the efforts of the admissions office to bring in

a similar number of students for the fall of 1991. Those efforts resulted in the enrollment of 1,676 full-time students, 383 of whom were freshmen. These numbers, and Dolan's comments, highlight the increasing competitiveness of the admissions climate.

Institutional Fund Raising

Vice-President for Institutional Advancement, Dan Gura, reports on a successful year in institutional advancement. Total gifts and grants (restricted and unrestricted) were \$1,454,514.49, publications and publication processes were strengthened, improvement of the ways in which the University relates to alumni and parents, the addition of a director of prospect research and the general strengthening of our processes and procedures were highlights of the year.

Athletic Success

Athletic Director, Hindman Wall, reports on the continuing success of Spartan athletics teams. The eighth straight 20-win basketball season, national rankings of number seven in soccer, ninth in baseball and 11th in volleyball; the formation of a campus athletics committee, the completion of an NCAA required

EARLY ANALYSIS

By David G. Ruffer
President

This report is being written at the close of my first month at The University of Tampa, and the end of the second week of classes. Any firm conclusions as to direction and process would be premature. I can, however, share with you some of the impressions I have formed as we continue to discover the resources we have for continuing the journey.

The UT curriculum is strong because of its clear derivation from a liberal-arts base, and because of the commitment the faculty has made for its continuing review and revision. The report of the task force on academic enhancement and its derivative groups will provide ideas and guidance necessary to make it even stronger.

New initiatives can develop from those discussions as we carefully and deliberately respond to our understandings of student needs and desires. We have clearly understood that we cannot be "all things," but must select from among all the possibilities those we can do well, and which fit with our vision of the baccalaureate.

The UT faculty has a level of scholarly excellence and commitment to working with students to help them

move from wherever they are to the most they can become, which is worthy of our highest praise. Nothing can be achieved without this commitment. With it, anything we determine possible can be.

UT students are interesting, searching, young people who have an energy level which will make it possible for them to respond to all the educational challenges we can deliver. The professionals who work with the extra-classroom portion of our curriculum are among the best I have met. They understand balance between the affective and cognitive parts of the UT experience, and will continue to develop the co-curriculum to enhance the total baccalaureate experience.

Our facilities are undergoing significant improvement, a plan which must continue. Ways of dealing with the crunch for space, the adequacy of space and the out-moded nature of some of our spaces are under discussion. These needs afford opportunities for increasing the commitment of persons to the University, and of increasing the overall level of the University's financial base.

The University is fortunate in the number of Tampa leaders who participate in the several boards. Between the Counselors, Fellows and Trustees, we engage the interest and commitment of

nearly 300 of Tampa's top leaders. We need to continue to explore ways in which we can take advantage of this unique resource.

We anticipate a continuing growth in the level of alumni giving, and in the participation of alumni in the life of the University. If we are doing our jobs, the needs we have will always outstrip our available resources. An active, involved, alumni body can provide funds, introductions, students and support which will enable us to grow.

The fall 1991 full-time enrollment of 1,676 is 124 students short of the budgeted enrollment of 1,800. The budget reductions necessary to achieve a balanced operation for 1991-92 were designed to have as little impact on programs as possible. The budget assumes a 7 percent drop from fall to spring. We will need to look carefully at this situation and bring the budget enrollment and actual enrollment into closer alignment.

In brief, my analysis of the situation is that The University of Tampa is strong and healthy. The problems we face are no different from those faced by many other universities. The advantage we have is that we have as members of this community the women and men with the brainpower and commitment necessary to figure out an appropriate solution to any problem. **UT**

self-study, the addition of a new softball field and a reorganization of the Sword and Shield club were among the highlights of the year.

Special note should be made that The University of Tampa won the Sunshine State Conference All Sports Men's Trophy for the second straight year, and that UT had the second highest number of Commissioner's Honor Roll Student-Athletes in the conference.

Human Resources Development

Vice-President for Human Resources, Linda English, reports on the continuing improvement of our efforts in human

resources planning and operation. Review of the wage and salary structure for faculty, development of new employee-handbooks and improvement of benefits programs were among the important efforts addressed during the year.

Business Matters

Vice-President for Administrative Affairs, Robert Forschner, reports on a difficult, complicated and eventful year in administrative affairs. Recovery from the Science Wing fire of August 1990, problems with allocation of financial aid expenditures, the cost of a presidential

search and a host of other unanticipated items made the close of the year with a small surplus a near miracle.

Total revenues and expenditures were \$27,911,243. The enormous cooperation of all persons in achieving this miracle is clearly important to note. Forschner's note that the year was "... one of great progress and considerable achievement" is an understatement.

You honored me by asking me to stand as the eighth successor to President Spaulding's dream. I pledge to you that I will do all that I can to hold on to that dream, and to help make The University of Tampa the great University we know it can become. **UT**

BEGINNINGS

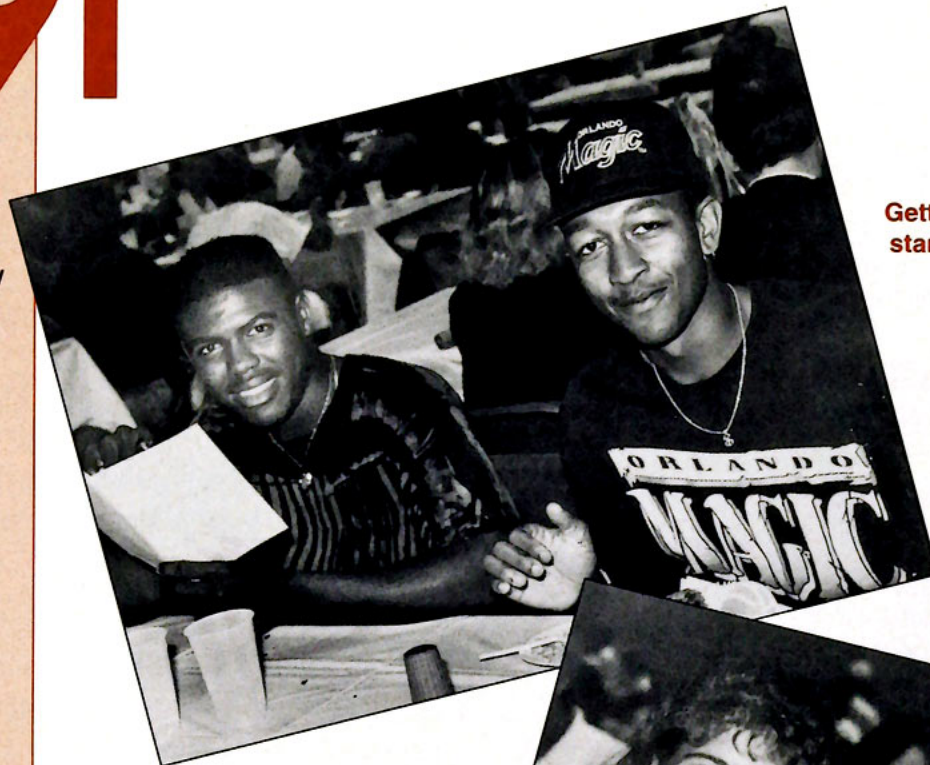
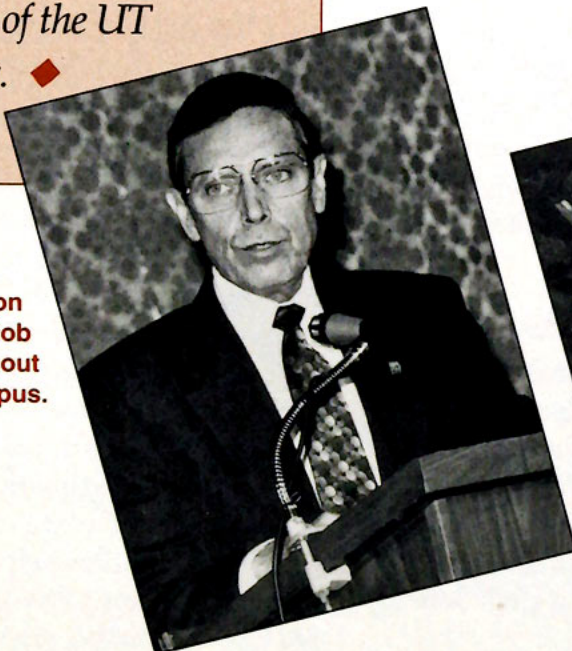
'91

New Student Orientation

The hectic ritual known as new-student orientation got underway with its usual rush of activity as parents and students struggled to pack a spate of receptions, mandatory meetings, late-night activities and the move into residence halls into seven short days.

◆ Orientation this year was held Aug. 26 - Sept. 1, then Labor Day took on a whole new meaning as the 393-member freshman class was introduced to its first day of classes. ◆ The process was aided by a host of UT faculty and staff who stood ready to aid the confused student or the wandering parent. ◆ That support will continue throughout the year as the new class is inducted into the lifestyle of the UT community. ◆

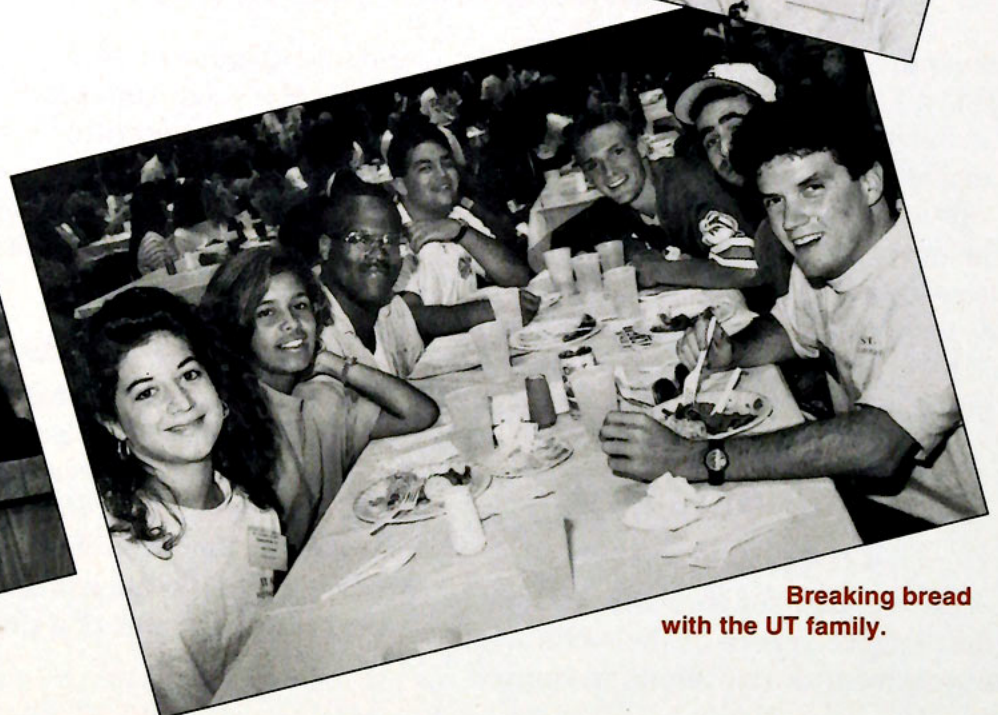
A word of caution from drug chief Bob Martinez, '57, about drug use on campus.



Getting an early start on the books?



A beginning for lasting friendships.



Breaking bread with the UT family.

UT

Dr. Ellis Cashmore, professor of sociology, contributed a chapter "Crime and Deviance" to *The New Modern Sociology Readings*, edited by Peter Worsley and published by Penguin this summer. In July, Cashmore acted as a consultant for BBC Radio's program "Racism-Is It a Black and White Issue?" on which he also appeared as a panelist.

Dr. James Covington, professor of history emeritus, had his book *The Seminoles and Their Neighbors* accepted for publication by the University of Florida Press. He also plans to teach a course on the American Indians next spring.

John Giancola, associate professor of communication, became a member of the Honor Society of Phi Kappa Phi in an April induction ceremony at the University of South Florida. In addition, he was presented with a Certificate of Recognition for Academic Excellence from the communication faculty at USF. Professor Giancola received a Master of Arts in Communications in August. He is in his second year of doctoral studies in communication.

■ FACULTY NOTES ■

Dr. Thomas Hegarty, provost and vice president for academic affairs, was elected in late spring to the board of directors of the Japan-America Society of Greater Tampa, the board of directors of the Florida Endowment for the Humanities and the board of SERVE (School Enrichment Resource Volunteers in Education).

Dr. David Clark Isele, Composer in Residence, has recently had two works published: "Come O Jesus," an advent song for mixed voices and keyboard accompaniment (G.I.A. Publications) and "Psalm 130" in a publication entitled *Vigils and Related Rites from the Order of Christian Funerals* (Canadian Conference of Catholic Bishops). On July 31, Isele presented the dedicatory recital on the newly rebuilt organ at Sacred Heart Church in Tampa. Over 800 people attended the program given on this historic instrument

originally dating from 1926. Assisting Isele in the recital were: Cheryl Isele, soprano; Dr. Beni Yangco, clarinet; Anna Yangco, violin; and Professor Malcolm Westly, accompanist. This was the first of 11 concerts on the UT Music Department's King of Instruments series for the 1991-92 season.

Dr. Tim Kennedy, assistant professor of communication, presented his paper "The Skyriver Project: A Model for Community Communication" at the International Visual Sociology Association Annual Conference. The conference was held at the Visual Studies Workshop, Rochester, NY, July 18-20.

Dr. Ronald Vaughn, Dean of the College of Business, gave a presentation at AACSB's national conference of business school deans, on "Committing to Total Quality Management: A Dean's Perspective." He also gave a presentation to the Florida Credit Union League on "Mastering Leadership." Vaughn has been added to the board of directors of the Tampa Bay Red Cross Chapter and the bay-area chapter of the American Society for Quality Control. **UT**

UT Communication Dept. on Cutting Edge

John Giancola, associate professor of communication, hosted a panel of jurors for the Independent Television Service (ITVS), May 31 - June 2, in the Communication Department of UT.

The ITVS was created by an act of Congress in 1988, and has a mandate to work closely with the Corporation for Public Broadcasting (CPB) in the development of programming that will "bring greater cultural diversity and stronger minority representation" to the Public Broadcasting System (PBS).

Giancola was joined on the panel by Clair Watkins, associate professor of communication at Emerson College and founder of the Boston Black Filmmakers Festival, and Coco Fusco, spokesperson for Latino media issues in New York.

The St. Paul-based ITVS issued a call for proposals from independent, non-commercial video and film producers and received over 2,200 responses.

The UT panel was one of 14 panels convened nationwide to judge proposals in the documentary category.

Of the 150 proposals and videotape samples reviewed by the UT panel, 10

were recommended to the final review panel which met in July.

ITVS is operating with an \$18 million production budget for the creation of programming projected to begin airing in the 1992-93 television season.

Congress created ITVS in response to an eight-year lobbying effort by the Association of Independent Video and Film Producers for better representation of American independent film and video on the Public Broadcasting System. **UT**

Scholarships to Honor Professors

Scholarship funds have been established in honor of two respected faculty members who died this year.

Dr. Marty S. Denoff (42), associate professor of social work, died of a heart attack in his office on April 24. **Dr. William D. Stewart** (70), professor of English, died on June 24, following a long illness.

Organizers of the scholarships are hoping that both funds will generate sufficient donations to qualify as perpetual scholarships.

The Denoff award will be made each spring at the University Honors Convocation to a junior UT student who has made an outstanding contribution of volunteer service to the community.

Since it was established in late Au-

gust, the Denoff fund has accumulated more than \$1,250, according to **Dr. Steve Hekkanen**, professor of psychology, who is accepting donations. Checks should be made out to the Denoff Scholarship Fund and mailed to Hekkanen, P.O. Box 101 F, 401 W. Kennedy Blvd., Tampa, FL, 33606-1490.

The Stewart scholarship will be awarded to an upper-level English major, but the qualifications have not yet been established by the English faculty, said coordinator, **Helene Silverman**, associate dean for the College of Liberal Arts and Sciences.

Anyone wishing to contribute to the Stewart fund should send it to Silverman at P.O. Box 52 F, 401 W. Kennedy Blvd., Tampa, FL, 33606-1490. **UT**

FROM THE LOCKER ROOM

Spartans Enter 1990s on High Note

By Gil Swalls
Sports Information Director

The 1980s brought an incredible re-emergence to The University of Tampa's intercollegiate athletic program as Spartan teams won numerous titles in virtually all 15 varsity sports, including NCAA championships in soccer and golf.

The phrase, "Decade of Success" was coined early in the decade to identify UT's athletic re-emphasis on men's varsity basketball, women's volleyball and other sports in a well-funded Division II program.

As a result of that commitment, intercollegiate athletics at UT entered the '90s on a roll and continues to build momentum as a premier NCAA II program. The Spartans completed the 1990-91 campaign with their second consecutive Sunshine State Conference all-sports trophy, sending teams to the NCAA championships, Top 20 polls and garnering recognition at all levels.

Soccer

Last fall, the Spartan soccer team got off to a fast start that carried throughout the school year. Coach Tom Fitzgerald's kickers raced to a 14-3-1 record, beating Div. I rival USF and blanking the nation's top-scoring team, Florida Tech, enroute to an SSC championship and No. 7 national ranking.

Two Spartans, goalkeeper Justin Throneburg and defender Niklas Fredriksson, earned All-America honors. Throneburg has emerged as one of college soccer's premier keepers, having played for a national AAU team and in the U.S. Sports Festival this summer. Jorgen Adolffson earned Academic All-America honors.

Volleyball

Chris Catanach's volleyball team enjoyed an equally successful season, posting a 33-11 record, placing second in the SSC and earning a No. 11 final national ranking. Junior Kim Dix earned second team All-America honors and was among four



Kim Dix

Lady Spartans to receive All-South recognition.

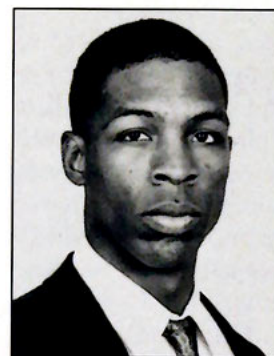
Cross Country

Spartan harriers placed third and fourth in men's and women's cross country in the SSC under coach Peter Brust. They saved the best for last as UT's season was highlighted by the one-two finish in the conference championship meet by



Gunnar Svendsen and Dave Shilkitus. The Lady Spartan's top duo of Linda Cassella and Luci Ladd placed sixth and seventh.

Men's Basketball



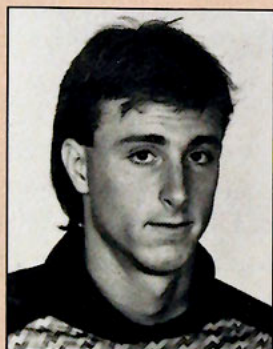
Bryan Williams

Momentum carried into the new year as Tampa's men's basketball team made national news in January. In his collegiate debut, freshman Rod Brooks posted two-game totals of 50 points, 20 rebounds and 10 steals to earn *Sports Illustrated's* National Player-of-the-Week honor. Meanwhile, senior Bryan Williams was creating ink in newspapers across the country as the "Williams Watch" led to an NCAA record (all divisions) for 3-point field-goal shooting.

With all that attention, Coach Richard Schmidt, who recorded his 200th career victory, kept his team's collective head on track to post an eighth consecutive 20-win season at 23-6. Williams was named third team All-American by *Basketball Times* while he and Drexel Deveau were selected first-team all-South and all-SSC. Senior Kevin Starnes became the school's career-assist leader, while Brooks brought UT its second straight conference newcomer-of-the-year award (sophomore Matt Streff won in 1989-90). DeCarlo Deveau also made the all-frosh team, providing UT with a strong nucleus for 1991-92.

Women's Basketball

In his second year at the helm of the women's basketball team, Coach Tom Mosca saw steady improvement as the Lady Spartans finished 12-14, the most



Justin Throneburg



Niklas Fredriksson



Jorgen Adolffson

wins in five years, and placed third in the SSC with a 7-5 mark for the third consecutive year. Kim Dix set 24 school records and became a rare prize for UT, earning All-America honors in a second sport as she was named to the Women's Sports Federation's first team in basketball, in addition to her earlier volleyball award.

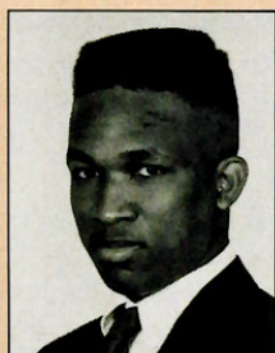


Swimming

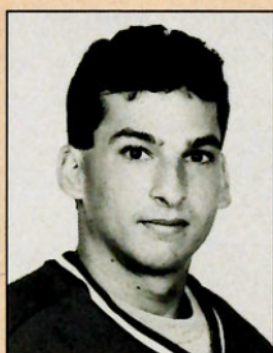
Laura Mercer represented Tampa at the NCAA championships to continue Spartan coach Ed Brennan's 11-year string in that sport.

Baseball

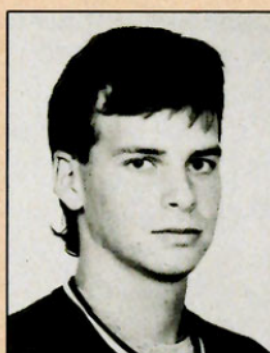
A second consecutive return trip to the NCAA Baseball Championships was thwarted in the South Region finals as Lelo Prado's Spartans fell



Ozzie Timmons



Joe Urso



Gary Graham

to Florida Southern to finish 34-17, ranked ninth nationally. Tampa produced three All-Americans in Ozzie Timmons, who signed a professional contract with the Chicago Cubs, and returning players Joe Urso and Gary Graham.

Timmons and Graham were named South Region Player and Pitcher-of-the-Year. Outfielder Tim Vanatta was voted to the baseball academic all-region team. Spartan players dominated the all-conference and all-region teams.

Women's Softball

The softball team made a dramatic turnaround under third-year coach Michelle Lamont. Sporting only one senior and one junior among 12 players, the Lady Spartans improved from 15-32 in 1990 to 22-24 in '91. The 22 victories set a school record. They were 14-10 in the SSC, earning third place.

Tennis

Tennis coach Gregg Gruhl guided the men to a 4-14 record in his first year, but the women, who had won just one match in their previous two seasons, finished the season with an 8-6 performance, giving credence to the belief that UT has added another superb young coach to its staff.



Golf

The golf team fell short of its goal to reach the NCAA championships, but was paced by All-American Fred Cornell who was medalist in two regular season tournaments and runner-up in two others. First-year coach, Bill Hayes, a master fund-raiser and president of the Chi Chi Rodriguez Youth Foundation, is making a big impact on UT's program.



Crew

As Gen. Norman Schwartzkopf was storming toward Kuwait, his daughter, Jessica, was winning medals on the home front as a member of UT's rowing program.

A UT freshman, Jessica and her fellow crew members won the women's novice heavyweight fours race at the 16th annual President's Cup Regatta. UT was also victorious in the women's novice lightweight fours that day and finished seventh overall among the 14 colleges entered.

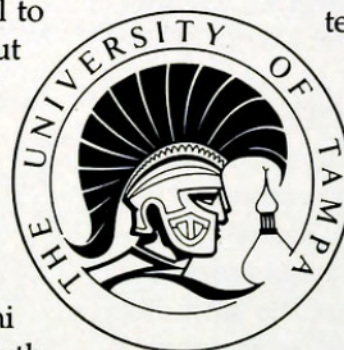
The President's Cup is the largest regatta of its kind in Florida and annually attracts top collegiate and high-school teams to UT's Hillsborough River location.

The 1980s marked a decade of success and growth for UT athletics. On the playing fields and in the classrooms, the Spartans have continued to excel into the '90s.

With new Athletic Director Hindman Wall at the helm, the marketing of a revitalized Sword & Shield club, combined with renewed emphasis on sponsorships, ticket sales and community-awareness programs, a fast pace is being set for Spartan athletics.

With all of this momentum, the Spartans look to the 90's as a time to reach for the top.

Wall has summarized it simply: "We want to be the best Division II program in the country with all of our student athletes earning their education and all of our teams having the chance to win national championships." **UT**



CAMPUS BYTES

Polishing off the Dome

Plant Hall's tarnished cupolas and the Fletcher Lounge dome will soon shine like new, as the University enters the next phase of its \$12 million dollar renovation of the national historic landmark.

Renovation of the century-old building's four cupolas and the dome over Fletcher Lounge, plus architectural fees, will cost approximately \$560,000.

The state has awarded a nearly \$420,000 historical preservation grant toward the project, and the remainder of the cost will be covered by the Plant Hall Project Fund, established by the University and city of Tampa.

The work on the four cupolas is expected to be completed in November.

Restorative work on the dome over Fletcher Lounge (phase two) will not start until January, and is expected to take approximately six months. Fletcher Lounge will be closed from Jan. 25 until the work is completed. With completion of the project, the entire roof line will have been restored in the last eight years.

Drugs on Campus

One in eight college students has admitted to using an illegal drug in the last month, said Gov. Bob Martinez, who now serves in Washington, DC, as director of the office of national drug control policy.

Martinez, '57, visited UT during orientation week, Aug. 28, to speak on substance abuse on college campuses during a program at Falk Theatre.

Nationwide, drug use has dropped 45 percent over five years, he said. On college campuses, drug use is down almost 40 percent from 1980 figures.

Still, "it is troubling to report that young people going to college are more likely to use drugs than those individuals who don't attend college," he said.

Last year, 11,000 Americans died directly as a result of using drugs, Martinez revealed.

Drug Program on Campus

After two years of rejections, the third time was a charm for the team of student-affairs officers seeking a hard-to-come-by federal grant to help implement a campuswide, substance-abuse program dubbed Partners for Responsible Choices.

The U.S. Department of Education has awarded the University a generous \$99,355 grant from its Fund for the Improvement of Postsecondary Education (FIPSE) for the two-year drug-awareness program.

Although drugs most frequently come to mind when someone mentions substance abuse, UT's program also will target alcohol, nicotine, steroids, even diet pills.

"We're not prohibitionists. We're educators," said Dean of Students and Project Director, Linda Devine. "We're trying to teach students to make responsible choices about what they're doing."

According to Devine, more than 80 percent of UT's discipline cases last year stemmed from alcohol, and more than 50 percent of students who visited the Personal and Career Development Center sought counseling for alcohol or other drug-related problems.

The program's six-pronged approach infiltrates every facet of the student's University experience from academics to residence life and social activities.

Advocate for Freedom Speaks at UT

Attorney Bruce Rogow, who represented rap group 2 Live Crew in their high-profile obscenity case, lectured on campus on Sept. 30.

Known as a champion for first-amendment rights, Rogow has been involved

in a number of well-publicized, controversial cases. He has represented a Miami Nazi group, the Ku Klux Klan, transvestites and a Seminole chief who killed and ate an endangered Florida panther.

Sponsored by UT's Diversity Project, part of the lecture and discussion centered on the debate between free speech versus hate speech.

UT Site of Gourmet Smorgasbord

Some of Florida's culinary treasures, will come to UT's Plant Park Oct. 11-13 for "Taste of Florida."

More than 40 restaurants and food vendors from throughout the state will sell samples of their specialties from 3 p.m. to 9 p.m. Friday; 11 a.m. to 9 p.m. Saturday; and 11 a.m. to 6 p.m. Sunday.

Renowned chefs and cookbook authors from around the country will demonstrate their favorite recipes and sign books as part of "Celebrity Corner." Admission to the event is free; however, tickets must be purchased in order to sample the food and beverages. Tickets will be available in Plant Park; prices have not been determined.

Proceeds will go toward the UT scholarship fund and the city of Tampa Friends of Recreation program.

Some featured chefs are:

- Paul Prudhomme — a celebrated Cajun chef from K-Paul's Louisiana Kitchen in New Orleans and author of "Seasoned America."

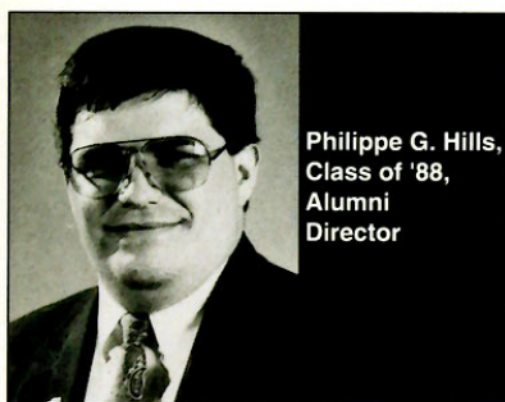
- Barbara Kafka — food columnist for Gourmet magazine, a feature writer for Food & Wine, the New York Times and Family Circle and author of the award-winning "Microwave Gourmet."

- John Mariani — a regular contributor to Fine Dining, The Wine Spectator, Country Living, Esquire and Bon Appetit and author of "Coast to Coast," a dining guide to 1,500 of the best meals available in 50 U.S. cities.

UT

Muezzin

A L U M N I N E W S



Philippe G. Hills,
Class of '88,
Alumni
Director

It is truly amazing how our shared experiences at our alma mater can bridge the generations. Over the summer I've had the opportunity to meet with many fellow alumni around the state and country. Some of these alumni I have known since I started school at UT not so long ago, and some I met for the first time. The memories and stories that are recounted always fascinate me.

So many of our fellow alumni remember the fantastic and joyous days they shared at The University of Tampa, yet so many lose touch with the closest and dearest friends they ever had. We all become too busy, or too involved, or too embarrassed to call after so many years. I am often asked, "Whatever happened to," or "Do you know how to contact...?"

In Orlando last July, a new group of alumni came together for the first time. Very few of the alumni in the room went to school together or knew each other before the meeting. By the end of the evening, stories from many class years were being told throughout the room. There was always a common thread, The University of Tampa. It tied memories and made the strangers friends.

Just a few days ago, a member of the class of 1949, Cipriano Cueto and his

wife, Esther, visited the campus and the alumni office for the first time in many years. We had lost all contact with Cipriano over the years. He had gone on to get his Ph.D. at Emory and we lost track of him.

While we sat and talked, the Cuetos looked through the 1949 yearbook. The joy and excitement in their voices and on their faces as they recognized old friends and professors cannot be described. Their memories of the times they spent around campus, the tough professors (and the easy ones), the cute girls and handsome guys, the sports teams and administrators, all came rushing back to them.

In the few short minutes we spent together, I got a feeling of what it was like in Tampa and at UT in 1949 and how much these two alumni enjoyed their time here. I hope to hear from these two new friends, fellow alumni, soon.

In my travels during the summer, I too was able to relive some of my college

memories. In Chicago I met with close to 20 fellow alumni as we celebrated the wedding of two classmates who are dear friends of mine. My job makes me relish such moments, for I see every day how close friends, who thought they would always be together, lose touch.

Why do I share these stories with you? Because I want you to remember your days at our alma mater. Call those old friends and think about the times you spent together. Don't worry that you haven't talked to each other for five, 10, 15 years or more. I guarantee that your Tampa experience can bridge the gap of any number of years. Take a moment; think about those times.

We can all get together again if we choose to make the effort. If you no longer know their address or phone number, call the Alumni Relations Office. We're here to help put you in touch with those memories whenever we can.

UT

ALUMNI CHAPTER UPDATE

By Nicholas F. Mooney

President, Tampa Alpha Alumni Chapter

As the University begins a new era under President David G. Ruffer, the Tampa Alpha Alumni Chapter continues its tradition of providing social and fund-raising activities to Bay-Area alumni.

The chapter kicked off the 1991-92 academic year with a general membership meeting/social on Sept. 19th. Outgoing President, Paul Petti, was awarded a plaque for his dedicated service the past two years. Last year, Tampa Alpha contributed nearly \$10,000 to University community groups and enjoyed several successful social functions.

The Annual Fund-Raiser Raffle will be held Oct. 18, at 7:30 p.m. in the Ballroom. We hope to have many of you join us,

so we can have the largest crowd ever. Other upcoming activities include a Golf Scramble with PGA Pro and UT graduate, Brian Claar, a Hall of Fame Bowl Tailgate Party and a No Lose Cruise on the Europa Sun.

To fully achieve the 'Audacious Dream' described by Dr. Ruffer, the University community needs the highest level of alumni membership and contribution. Tampa Alpha's commitment to the challenge of making UT a better university depends on the involvement of all alumni. Be a part of the new "Spartan Pride."

For raffle tickets or more information, contact the Alumni Office at 253-6268. **UT**

CALL FOR NOMINEES —1992 Alumni Awards—

To assist the awards committee in evaluating the nominee, please provide as much detailed information as possible, including significant history, community activities, honors received, published works and other pertinent data. Related newspaper clippings and magazine articles would be helpful. Please keep nominations confidential. Attach additional sheets as necessary.

ALUMNI AWARDS CRITERIA

Esse Quam Videri

Outstanding Alumnus Award

1. Must be a graduate of The University of Tampa.
2. Recipient's record of service to The University of Tampa and/or the National Alumni Association may be considered.
3. Recipient should have a record of outstanding achievements in his/her chosen career and/or his/her civic involvement.
4. This award may be presented annually to not more than three people.



Alumni Achievement Citation

1. Recipient must be an alumnus of The University of Tampa.
2. Recipient should have a record of outstanding achievements in his/her chosen career and/or civic involvement.
3. This award is given annually to as many nominees as the National Alumni Association Awards Committee feels appropriate to receive.

National Alumni Association Young Alumnus Award

1. Recipient must be a graduate of The University of Tampa.
2. Recipient must be forty (40) years of age or younger.
3. Recipient should show a level of achievement and leadership in his/her chosen career and/or civic involvement.
4. This award may be given annually to not more than three people.

National Alumni Association Recognition Certificate

1. Individual should show great levels of assistance, support and service to The University of Tampa National Alumni Association.
2. Individual may or may not be an alumnus of The University of Tampa.

3. This award is given annually to as many nominees as the National Alumni Association Awards Committee feels appropriate to receive.

REQUIREMENTS IN ALL CATEGORIES

1. Recipients must attend the awards ceremonies in order to receive the award.
2. The fact that an individual has received another type of award in a previous year does not preclude him/her from becoming a recipient of another award if qualifications are met.
3. Confidential nominations submitted on the appropriate form will be accepted by the awards committee from any alumnus, friend or alumni affiliate organization of The University of Tampa. Nominations must be submitted no later than January 15 each year.
4. Awards will be presented each year during the University's Alumni Homecoming weekend.

The NAA Awards Committee will review nominations for all of the awards and recommend recipients to the UT National Alumni Council.

UT

NOMINATION FORM

I nominate _____ Class of _____
for the 1991 _____ Award because: (Attach additional sheet.)
Nominee's Name _____ Nominee's Occupation _____
Nominee's Address _____
Nominee's Telephone Number (____) _____ Nominated by: _____

Nominations and supporting documentation must be received **no later than Jan. 15, 1992**. Please mail to:

NAA Awards Committee
The University of Tampa • Box H
401 West Kennedy Blvd. • Tampa, FL 33606-1490

C L A S S N O T E S

'39

Dr. **Braulio Alonso** and his wife Bebe celebrated their 50th wedding anniversary Aug. 3 by renewing their vows at Christ the King Church in Tampa. Over 200 family members and friends attended the event and luncheon. The Alonsos live in Tampa.

'51

Jose Unsiog recently visited UT for the first time since his graduation. He recently retired from the Guam government as Assistant Secretary of Labor and lives with his family in Guam.

'58

Vincent L. Tata was selected to represent Hernando County in Costa Rica this summer for the Florida Summer In Service Institute program. He is one of only 25 individuals so chosen. Tata teaches at Hernando High School in Brooksville.

'63

Thomas Ackerly was married on March 25. The couple live in Kenai, AL, where he is a legislative assistant to the Alaska state representative. He retired from teaching in May 1988.

Sam Rampello is serving his 15th year as a member of the Hillsborough County School Board. He was appointed in 1976 by then Gov. Reubin Askew and has since been elected to the board every term.

'64

Odis Gene Richardson is a teacher and counselor at Jean Baptiste Point DuSable High School on Chicago's south side. He assists students from Chicago's tough neighborhoods who want to go to college.

William P. Terri works for Aetna Insurance and has relocated from New York to London.

'67 (REUNION FEB. '92)

Douglas C. Smith has been living in the Orient as a visiting scholar. He works at West Virginia University as a senior professor and administrator.

'71

Karen Chapple has been named executive director of Summit House, a residential alternative to prison for women and their children. She lives in Greensboro, NC.

Joann (Silka) Shepard married Richard Shepard on Dec. 22. She teaches middle science at Holy Trinity School in Des Moines, IA. They live in Indianola, IA.

'74

David M. Hyde and **Eileen R. Murphy** live in Germantown, MD. He works for IBM's applications division in Gaithersburg while teaching part-time at Montgomery College in Rockville, MD. She works for the U.S. Commerce Department, fi-

nance services division of the National Oceanic and Atmospheric Administration.

'77 (REUNION FEB. '92)

Lt. Col. Wayne J. Morgan has received an appointment to the U.S. Army War College, Carlisle Barracks, PA, until June '92. He and his wife, Lindy, moved to Pennsylvania from Sarasota.

A. Louis Paolilli is working on his master's degree in human resource management at Florida Institute of Technology. He lives in Apopka, FL.

Susan (Gibson) Wynn and her husband, John, announce the birth of their third child, Matthew, on May 10. They live in Coral Springs, FL.

'78

David Devine recently attended an executive retreat in Atlanta, where he was trained in the management of sports professionals and their careers. The retreat centered on drugs and alcohol in sports. He and his wife, Linda, UT Dean of Students, live in Tampa.

'79

Mary Zukowski Rieder and her husband, Gene, live in Cape Coral, FL with their children, Brant Christopher (5) and Jessica Kate (1). The Rieders recently celebrated their ninth wedding anniversary.

Continued on Page 12...

One Hundred Years in the Annals of History

The University of Tampa 1991 Moroccan

Look Under the Minarets

Experience how Henry Bradley Plant's luxurious Tampa Bay Hotel transformed into The University of Tampa in the pages of this special edition of the Moroccan yearbook, commemorating the centennial of Plant Hall.

To obtain your copy of the 1991 Moroccan, complete and mail in the order form below, along with your payment.

Order Form

Qty: _____ X Price Each \$20 + \$2 Postage Fee = Total \$ _____

Name _____

Address _____

City _____ State _____ Zip Code _____

☐ Check ☐ Money Order

Please make checks payable to the Moroccan.

All inquiries should be sent to:

Rita Pavan • Moroccan editor
Box 2756 • The University of Tampa
401 West Kennedy Blvd. • Tampa, FL 33606-1490
(813) 253-6263

C L A S S N O T E S

'80

Anna M. Cline, is a staff sergeant in the U.S. Air Force with the 37th Air Force Reserve at MacDill Air Force Base. She has just returned from a six-month deployment in the Persian Gulf, and plans to complete her nursing degree and pursue a commission as an officer with the USAF. She resides in St. Petersburg, FL.

Elizabeth Johnson teaches eighth grade American history in the Baltimore County

School System. She received her M.A.T. from Vanderbilt University and teaches at Johnnycake Middle School.

Daniel J. Lucas graduated from Golden Gate University with a master's in public administration and a master's in justice administration. He lives in Tampa.

Maryl Gordon Henry and her husband, Bill, announce the birth of their first child, Candice Elaine, on July 9. They live in Sarasota, FL.

'82 (REUNION FEB. '92)

Jonathan W. Soule works for Windsor & Associates Inc. in land development research and planning. He lives in Tampa.

Glenn and Cynthia Romero live in Brownsville, TX, with their two-year-old daughter, Jordan Taylor. He is a partner with the law firm of Hirsch, Glover, Robinson & Sheiness.

Mark S. Rogers and his wife, Roberta, live in Glens Falls, NY, with their daughter Jamie (18 months) and son Michael (3). Rogers was recently promoted to regional sales manager for Commodore Cruise Lines.

'83

Kathy Carroll Cooper and **Bill Cooper '79**, announce the birth of a daughter, Jourdan, on May 19. They have one other daughter, Allyson, who is 4. They live in Tampa.

Allan Pollack married **Jodi Alexander** on July 7. He has accepted a position at North American Trust Company in San Diego as an assistant vice president and trust administrator. Pollack recently coached the San Diego Rangers of the Thousand Oaks Adult Hockey League to a league championship in his second year as head coach.

'84

Frederick J. MacDonald, O.D., is a lieutenant in the U.S. Navy stationed at the optometry clinic, Naval Hospital, U.S. Submarine

Base at Groton, CT. He received his optometric doctor degree in 1989. He and his wife, Elizabeth, were married on May 12, 1990.

Peggy Grubbs has signed a contract with Brady/Prentice Hall to publish a textbook which she is writing for nursing assistants in long-term health care. She lives in Riverview, FL.

'85

David A. Knight and his wife, Rattana, announce the birth of Michele Elizabeth on June 8. He is a supervisor for Security Systems of Connecticut. The family lives in West Hartford, CT.

Mary Morris married **Michael Joseph Palumbo** on April 20. They live in Washington, D.C.

Richard D. Kulp has graduated from the Marine Corps Basic School at Quantico, VA. He was trained as a commissioned officer for assignment to the Fleet Marine Force.

Richard McManus is a securities principal at John Hancock Mutual Funds in Boston.

Dawn E. Clark was appointed publications coordinator in the Office of Media Relations and Publications at the University of South Florida.

Larry A. Harvey was appointed associate general agent of Florida for Lutheran Brotherhood, the largest fra-



BEAUTY TO BEHOLD

PLANT'S PALACE

Henry B. Plant and the Tampa Bay Hotel

Internationally known photographer Tommy Thompson captures the mystique of the architectural wonder — Plant Hall — in this magnificent, full-color tribute to the 100 years of the Tampa Bay Hotel.

Peer through the keyholes, marvel at the rich wood and iron detailing, experience golden mornings in Plant Park and purple dusks over the minarets.

Relive the history, as Dr. James Covington, professor emeritus recounts the story of railroad magnate Henry B. Plant and the evolution of his luxury hotel into the main academic building of The University of Tampa. Dozens of vintage photographs in black and white bring the story to life.

To order your copy of *Plant's Palace*, contact the Office of Institutional Advancement at (813) 253-6220. The cost of the book is \$29.95, plus \$3.50 for shipping and handling. Florida residents add \$1.80 for tax.

C L A S S N O T E S

ternal insurance society in the United States. In May, he was appointed to the board of directors of the Florida Fraternal Congress, representing all insurance societies in Florida.

'86

Gina Bergamino was recently awarded a poetry grant from the Olive Garvey Foundation, and had her chapbook of love poems entitled, "When You Read This You'll Know Who You Are" published by Penumbra Press. Another chapbook entitled "OMA's Story" was published by Ancient Mariners Press.

Theresa Mane Garcia is attending Stetson University College of Law. Her expected graduation date is May 1992.

Erica Edwards received her juris doctorate degree from Duke University in May.

'87 (REUNION FEB. '92)

Tamela (Brooks) Liebel was married March 23 to **Chris W. Liebel**. She works for Price Waterhouse where she was recently promoted to senior support specialist in the information and technology center.

Patrick and Debra McKenna announce the birth of their first child, Elenor Frances, 6 lbs, 9 ozs, on April 2. Pamela Cunningham, director of residence life at UT, served as co-coach during the delivery.

Master Sgt. **John Brown** is stationed at Eaker Air Force Base in Arkansas and is the utilities superintendent for the 97th CES.

Fiona McLatchie married **Thomas DeBartolo** on July 17. She attends Montclair State College and is studying for her master's in educational psychology.

Dan Pavia recently returned from deployment in the Middle East in support of Operation Desert Storm while serving aboard the aircraft carrier, John F. Kennedy.

Dr. Edward C. Pierson graduated from The Ohio State University Medical School in June. He is now a psychiatry resident at the Cleveland Clinic Foundation in Ohio.

'88

Jeffery and Allison (Kostelnik) Schroeder live in

Monroeville, PA. She is an accountant for the law firm of Trushal, Klym & Olszewski in Pittsburgh. He recently won "Salesman of the Year" with MacGregor Golf Company, allowing him to attend the Masters Tournament in Augusta, GA.

Christian A. Aherns lives in Lexington, MA. She is engaged to Scott Greene. The couple is planning a December wedding.

Carmen (Tomasello) Brushwood received a master of arts degree at the Presbyterian School of Christian Education on May 26. She and her husband, Todd, are beginning a year's internship at Gulf Breeze Presbyterian Church in Florida.

Patti Warner graduated from UCLA with a master's in immunology in 1990. She has entered the optometry

program at the University of Missouri, St. Louis.

David Potter returned in July from serving in Operation Desert Storm. He served with the 32nd Transportation Group Army Reserve Unit along with Capt. **Jay Chrobak**, '86. Potter and his wife, Irene, live in Tampa.

'89

Scott A. Scheinder and Lori Reith, '90, were married Aug. 3 in Forest Park, IL. The wedding party included: **Chris Hughes**, '89, **Dave Hanson**, '89, **Sherri Watson**, '91, **Margo Comport**, '90, **Loraine Rafter**, '89, **Phil Hills**, '88, **Reggie Flesvig**, '89. The couple live in Arlington Heights, IL.

Ronald DuBois has completed a tour of duty in Korea with the U.S. Army as a

Continued on Page 14...

Alumni Relations Office The University of Tampa • Box H Tampa, Florida 33606-1490		<h2>A LUMNI</h2>		Use this form to notify the Alumni Office of your change of address.	
Please change my/our address on your records					
From:			To:		
_____			_____		
_____			_____		
(signed)			(class)		
The University of Tampa is vitally interested in the progress of its alumni. Use this form to keep the Alumni Office posted. I am happy to report the following:					
<input type="checkbox"/> New position <input type="checkbox"/> Promotion		<input type="checkbox"/> Civic or church post <input type="checkbox"/> Recent book or article		<input type="checkbox"/> Graduate study <input type="checkbox"/> Recently married _____ (date)	
(spouse's name)			(class)		
Addition to family			_____		
(birth date)			(name of child)		
Please give further details _____					
(signed)			(class)		

C L A S S N O T E S

platoon leader in an attack helicopter battalion. He returned to Ft. Rucker, AL, in August for an Officers Advance Course and an aircraft transition.

Craig Ainsworth and **Kim Patterson**, '88, were married May 25. The couple live in Atlanta. He is an assistant district manager for Blimpie/Astra Restaurant Group. She is a recruiter for Careers USA.

Chris Hughes has been promoted to first lieutenant in the U.S. Army. He is stationed at Schofield Barracks in Hawaii.

'90

Paul B. Heth lives in Tampa where he is vice president and co-founder of HGI Inc., a trade development and management firm.

Michelle Baker is teaching severely emotionally disturbed high-school students in Tampa and is working on her master's degree in emotionally handicapped teaching at the University of South Florida.

Vicki Robey has been accepted to the master's in social work program at the University of South Florida. She began her work in August.

Hoang Van Bui is studying in the visual arts graduate program at the University of Georgia. He plans to teach in Florida.

Kristy Strickland has completed her master's in history at the University of South Florida and is entering the doctoral program in history at the University of Tennessee, Knoxville.

'91

Steve Mumaw has been named assistant baseball coach and academic counselor at Pasco-Hernando Community College. He has played in the Toronto

Blue Jay and St. Louis Cardinal minor league organizations since playing with the Spartans.

Brett Heffernan works as a biologist for the environmental service firm of Geraghty & Miller Inc. He lives in Tampa.

Deceased:

William Glenn Jr., faculty
Anthony Freedy '42
Margaret D. Crepps '48
Charles T. Hammond '49
John L. Guagliardo '57
Robert J. Wilbur '59
Barbara Sobel Reddoch '67
Paul P. Reinhardt '69
Margaret Herold Roig,
M.Ed., '79

Tampa Review

Delightful Holiday Reading For You And Your Friends

The 1991 *Tampa Review* offers stories, art, interviews, essays and poems for memorable moments during the holidays and throughout the year.

Share a literary and artistic gift from your alma mater this holiday season.

Order Form

____ Please enter my subscription for the next *Tampa Review*. My check for \$7.50 is enclosed.

____ Please send a gift subscription for the 1991 *Tampa Review* to the enclosed individuals, at \$7.50 each. (Attach their names and addresses; gift cards will be enclosed.)

Your Name _____

Your Address _____

City _____ State _____ Zip _____

Return this form with a check, payable to:
Tampa Review • Box 19F • The University of Tampa
401 West Kennedy Blvd. • Tampa, FL 33606-1490

The Pinter Review: Annual Essays

"... a splendid new title and a must
for theater collections."
— *The Library Journal*

"For libraries serving graduate students and advanced
undergraduates in English, theater and film."
— K. McLintock, *Choice*

Available in hardcover and paperback

Library Subscription Rates

- One year: 25* • Two years: \$45* • Three years: \$65*

*Add \$5 for hardcover edition

The Harold Pinter Society Membership Dues

- One year: \$15 (husband/wife: \$20) • Two years: \$25
- Sponsor: \$50 • Lifetime: \$100
- Student/emeritus/unemployed: \$10

Send manuscripts and editorial correspondence to:

Frank Gillen • The University of Tampa • Box 11F
401 West Kennedy Blvd. • Tampa, FL 33606-1490

Send membership dues, subscriptions and inquiries to:

Steven H. Gale • Harold Pinter Society
Kentucky State University • Frankfort, KY 40601

C O N T R I B U T O R S

The University of Tampa recognizes through this listing, and those that follow, the invaluable contributions of individuals, corporations, organizations and foundations to the concept and importance of private liberal-arts education. Without this steadfast and loyal commitment from the community during the

1990-91 fund-raising year, the University could not continue to grow and prosper.

Donors named in the following lists contributed to The University of Tampa during the period of June 1, 1990 - May 31, 1991. Matching gifts received after that date will not be credited until the fiscal year 1991-92.

1990-91 PRESIDENT'S COUNCIL

**The President's Council is the most esteemed gift society of
The University of Tampa, honoring donors of \$10,000 or more.**

Mr. and Mrs. Alfred S. Austin
Senator Malcolm E. Beard
The Frank Stanley Beveridge
Foundation, Inc.
Conn Memorial Foundation, Inc.
The David Falk Foundation, Inc.
Florida Department of State/Bureau of
Historic Preservation
Florida Independent College Fund
GTE Foundation
Max H. Hollingsworth
Mr. and Mrs. Robert A. Jaeb

Mr. and Mrs. Julio Juristo
Kimmins Environmental Service
Corporation
Mary B. & Fred B. Kreider Trust
Mr. and Mrs. Fred D. Learey
Mr. Angel Oliva, Sr.
Mr. and Mrs. J. Ross Parker
Pepsi-Cola Company South
The Polish Heritage Foundation
The Saunders Foundation
Mr. and Mrs. T. Terrell Sessums

L. Garry Smith, Jr.
Mr. and Mrs. George M. Steinbrenner, III
Sun Bank of Tampa Bay/George W. Koehn
Estate of Victor E. Tack
Tampa Electric Company/
Girard F. Anderson
Tampa Greyhound Track
The Walter Foundation
WFLA/Media General Broadcast
W.R.B. Enterprises, Inc./G. Robert
Blanchard

1990-91 MINARET SOCIETY

**Named in honor of the minarets atop H.B. Plant Hall, the Minaret Society recognizes alumni
and friends who annually contribute between \$1,000 and \$9,999 to The University of Tampa.
Donors to athletics are members of Sword & Shield.**

GOLD CRESCENT MEMBERS (\$5,000-\$9,999)

Sandra Antonini
Carlisle Motor Company
Community Foundation for Southeastern
Michigan/Roger B. Smith Fund
Mr. and Mrs. Thomas A. Cooper
Critikon, Inc.
A. D. Davis Family/WD Charities, Inc.
J.E. Davis/WD Charities, Inc.
George W. Jenkins Foundation, Inc.
Hillsborough River Realty Corp./
John J. Avlon
Jones Intercable, Inc.
Lykes Brothers, Inc./Thomas L. Rankin
Merchants Association of Florida/
Mr. and Mrs. Richard C. Swirbul
NCNB National Bank of Florida
Radiomatic Instruments &
Chemical Company
Mr. and Mrs. R. James Robbins
William G. & Marie Selby Foundation
William L. and Elvira Stoeltzing
The Tampa Tribune

SILVER CRESCENT MEMBERS (\$1,000-\$4,999)

Alcalde, Rousselot & Fay/Hector Alcalde
Thomas D. Arthur/Havatampa
Incorporated
Mr. and Mrs. W. DeHart Ayala
Baldwin & Sons, Inc./Walter Baldwin
The Bank Of Tampa
Banyan Foundation/Mr. and
Mrs. Reese Coppage
Mr. and Mrs. John C. Bierley
William B. Blackburn
Mr. and Mrs. William D. Blizzard, Jr.
Dr. E. W. "Buddy" Boatwright
Troy A. Brown, Jr./Raybro
Electric Supplies, Inc.
C & S National Bank of Florida/
Roxann W. Moore
Bruce Carp
Mr. and Mrs. John B. Caswell
The Chisellers, Inc.
Mr. and Mrs. Frank G. Cisneros/
Marman U.S.A., Inc.
Citicorp/David Starr

Mr. and Mrs. Robert W. Compton
Robert W. Cook
Coopers & Lybrand/James H. Maxwell, Jr.
Mr. and Mrs. Thomas G. Creed
Mr. and Mrs. William M. Crosby
Dr. & Mrs. Charles J. Cunningham, Jr.
Mr. and Mrs. Jeffrey M. Davidson
Mr. and Mrs. Charles M. Davis, Jr./
Davis Brothers Insurance Agency
Mr. and Mrs. Charles M. Davis, Sr./
Davis Brothers Insurance Agency
Mr. and Mrs. Sam F. Davis
Dr. and Mrs. David M. Delo
Deloitte & Touche
David and Linda Devine
Dr. and Mrs. Stephen F. Dickey
Mr. and Mrs. Richard J. Dobkin
Mr. and Mrs. John F. Dolan
The Dorothy Thomas Foundation, Inc.
Dow Chemical U.S.A.
Mr. and Mrs. Daniel M. Doyle
Dr. and Mrs. Garth R. Drewry

Continued on Page 16 . . .

C O N T R I B U T O R S

Mr. and Mrs. David L. Dunkel/
Romac & Associates
Gerald W. Eppley
Ernst & Young
Hilliard M. Eure, III/KPMG Peat Marwick
Arthur Feldman
Mr. and Mrs. James L. Ferman, Jr.
Mr. and Mrs. James L. Ferman, Sr.
Mr. and Mrs. Peter Fingar
Mr. and Mrs. Charles F. Fisher, Sr.
Florida Steel Corporation Foundation, Inc.
Nancy T. Ford
FUJI Photo Film U.S.A., Inc.
Virginia Wilson Galagan, Inc.
Mr. and Mrs. John F. Germany
Leonard H. Gilbert/Carlton Fields, et al.
William A. Gillen
Grace G. Giunta
Mrs. G. R. Griffin
GTE Data Services, Inc.
Dan and Barbara Gura
Thomas Hall
Mr. and Mrs. George E. Hanselman
C. S. "Stan" Harrell/Pharmacy
Management Services, Inc.
John and JoBeth Harrison/Free Press
Publishing Co., Inc.
Mr. and Mrs. Syd N. Heaton
Thomas J. and Louisa Ivanova Hegarty
Mr. and Mrs. Dean R. Henderson
Mr. and Mrs. Robert D. Hill
Hill-Donnelly Corporation/Lee H. Hill, III
Hillsboro Sheet Metal, Inc.
Martin Himmel Health Foundation
Harry M. Hobbs
Margaret D. Hobbs
Mr. and Mrs. Vincent A. Hoover
Col. and Mrs. Joseph W. House
Mr. and Mrs. John T. Howard
Mr. and Mrs. Carlisle Hutchinson
IBM Corporation
Pamela S. Jordan
Mr. and Mrs. Perry O. Keene, Jr.
Mr. and Mrs. James M. Kelly
Mr. and Mrs. David C. G. Kerr
Sophie T. Kurtz
Mr. and Mrs. Jan M. Larson

1990-91 MINARET SOCIETY

Continued from Page 15

Susan W. Leisner
Carol J. Lingerfelt
Mr. and Mrs. A. Byrne Litschgi
Macfarlane Ferguson Allison & Kelly
Dr. William J. Manint
Dr. and Mrs. Alfred S. Massam
J. Larry Massingill/The Elmer J.
Krauss Organization
Mr. and Mrs. Herbert G. McKay
William C. McLellan/Odell
Associates, Inc.
Mr. and Mrs. Allan L. McLeod, Jr./
Barnett Bank of Tampa, N.A.
Metropolitan Life Insurance
Company/Rudolph Michaud
Moire' Graphics, Inc.
Mr. and Mrs. Ashby Moody
Mr. and Mrs. Harris H. Mullen
Mr. and Mrs. Mark J. Murphy
Mr. and Mrs. Vincent J. Naimoli
Daniel M. Norris
Mr. and Mrs. Herman Oellerich/
Mathews Corporation
Harry F. Oleson/Oleson's Frame Shop
Mr. & Mrs. Solon F. O'Neal, Jr.
Mr. and Mrs. Michael D. Osterhout
Mr. and Mrs. Jeffrey R. Parker
Mary E. Parker Foundation
Lois W. Pauchey
Phoenix Integrated Footwear
Marc and Donna Popovich
Dr. Dennis F. Pupello
Mr. and Mrs. Saul Putterman
Dr. Margaret H. Raffa
Margaret R. Ragg
Mr. and Mrs. Samuel J. Rampello
Allen N. and Vivian C. Reeves
Stephen M. Richards
Mr. and Mrs. Austin Rising
Deanne Roberts/Roberts & Hice
Public Relations
Carmen E. Rodriguez

Mr. & Mrs. Jack Rodriguez
Shirley A. Ryals
Joe Sacco
Mr. and Mrs. Bruce A. Samson
Shirley McKay Savage
Robert E. Scott
Sears-Roebuck Foundation/
FL Independent College Fund
Mr. and Mrs. Mandell Shimberg
Alex A. Sink
Southeast Bank, N.A./Nancy V. Downey
Mr. & Mrs. William E. Starkey
Joan W. Stein
Mr. and Mrs. Joseph T. Steuer
Chris T. Sullivan
Tampa Alpha Chapter/University
of Tampa Alumni Association
Tampa Bay Downs, Inc.
Tampa Jai-Alai
Mr. & Mrs. Thomas E. Taylor
TECO Energy, Inc.
Jeffrey D. Thaxter/Grubb & Ellis
of Florida
Mr. and Mrs. Richard C. Thomas
Mr. and Mrs. William G. Thomas, Jr.
Time Warner, Inc.
Mr. and Mrs. J. Thomas Touchton
Dr. Israel Tribble, Jr.
Jack and Ruth Turbeville
Mr. and Mrs. Gilbert E. Turner
Kathryn Hill Turner
UPS Foundation/FL Independent
College Fund
Mr. and Mrs. Thomas A. Valenti
Dr. and Mrs. Ronald L. Vaughn
Sylvia Corral Vega
Mr. and Mrs. Theodore E. Wade
Laura Waller
Mr. and Mrs. Roy M. Whitehead
Dina M. Williams
Mr. and Mrs. Richard K. Wittcoff
Barbara M. Yadley
Alvin P. Yorkunas/Al Yorkunas
Advertising Agency
Gwynne A. Young
Joe and Vilma Zalupski

1990-91 FREDERIC SPAULDING SOCIETY

Named for the founding President of the University, the Frederic Spaulding Society recognizes those alumni and friends who annually contribute between \$100 and \$999.

FREDERIC SPAULDING SOCIETY GOLD (\$500 - \$999)

Miguel and Lydia M. Acosta
Mr. Michael C. Ahern
Mr. Donald L. Appelquist
Mr. Jeffrey S. Carr
Mr. Van J. Clark
Mrs. Mary Eleanor Cline
Crackers Comedy Club
Mr. Jade Dellinger

Mr. and Mrs. Gilbert De Meza
Aaron H. and Vilma Dowd
Mr. and Mrs. V. L. Elliott & Connie
Mr. and Mrs. Patrick English
Mr. and Mrs. Robert E. Forschner
Mr. Kenneth Garcia
Mr. Robert A. Hays, Jr.
Mr. Stephen P. Hess
Maril B. Jacobs-Fendig
Mr. and Mrs. John W. Kercher

Mr. Allan Kwok
Mr. Michael C. Lauder
Mr. and Mrs. Robert Lawrence/
McDonald's-Caspers Co.
Mr. John P. Lowth, III
Dr. Nicolas G. Maragos
Mr. Robert D. Mohr
Mr. Michael J. Pacetti
Mr. Fred E. Pollock
Dorothy G. & William W. Read

C O N T R I B U T O R S

Mr. Jerome A. Schine
Mr. Casey J. Schoen
Mr. Michael Shea
Mr. James F. Shearer
Mr. Frank S. Sinkwich
Mr. and Mrs. Joseph R. Smith
Dr. William D. Stewart
Mr. and Mrs. David M. Sykes
Mr. and Mrs. W. Scott Trundle
Mr. Thomas A. Valdes
Mr. Milo A. Vega
Ms. Anne Verret
Dr. Eric Vlahov
Mr. Jack Wilson
Mrs. Jane Hall Witt

FREDERIC SPAULDING SOCIETY **SILVER (\$250 - \$499)**

All American Plumbing
All Pro Championships, Inc.
Arthur Andersen & Co.
Mr. Charles E. August, Jr.
Mr. and Mrs. Paul W. Babikow
Mr. and Mrs. Charles L. Bagby
Mr. Mark J. Ball, Jr.
Mr. Thomas S. Beck
Mr. Milton O. Bedingfield
Richard R. Boston
Mr. J. Stewart Bryan, III
Mr. David N. Carruthers
Mr. and Mrs. Anthony J. Coney
Virginia M. Covington & Douglas Bagge
C&S National Bank of Florida
Dr. and Mrs. William Cyzewski
Peter Dartley
John and Olive K. Deal
Ms. Kimberly F. DeShong
William and Lois K. Dmytryk
Mr. and Mrs. William F. Ebsary
Mr. Craig R. Edwards
Ms. Daisy Bowman Fisher/Bowman
Centre, Inc.
Mr. Richard E. Grabowski
Mr. Barton D. Hartsock
HSN Telemation, Inc.
James A. and Linda Ingram
Mr. and Mrs. Eric Kaltman
Mr. Arie Kanofsky
Dr. Jesse L. Keene
Ms. Elizabeth Kercher
Skaye Kirk
Mr. and Mrs. James H. Kynes
Dr. and Mrs. Burton N. Lowe
Mr. and Mrs. John M. Luther
Mr. George McLaughlin, Jr.
Ms. Melodee E. McThenia
Mr. Gene E. Moll
Mr. and Mrs. O. William Moody
Mr. James P. O'Drobinak
Rick & Sheri Ogorek
John and Dolores Parker
Mr. Andrew L. Pink
Mr. Jerome D. Quinn
Anita K. & Leslie Scharf

Mr. Andrew J. Shroder, III
Michael S. Southard
Southeast Bank N.A.
Mr. and Mrs. James B. Strenski/Public
Communications, Inc.
Mr. Russell L. Thompson
Trenam Simmons et al.
Mr. and Mrs. M. Alex White
Celeste & James W. Whitehead

FREDERIC SPAULDING SOCIETY **BRONZE (\$100 - \$249)**

Mr. and Mrs. Bruce W. Adams
Mr. Carlos J. Alfonso
Dr. and Mrs. Braulio Alonso
Mr. Leonard N. Altamura
Martin & Brigitte Hinz Andersen, Jr.
Applied Applications, Inc.
Mr. and Mrs. Charles E. August
Ms. Lynn M. Awad
Mr. Andrew M. Ball
Michelle (Lepore) Barry
Ms. Susanne Bell
Mr. Douglas J. Bender
Lt. Col. Clyde R. Bergwin
Mr. Herman O. Bips, III
Mr. Thomas E. Bissonnette
Mr. Wallace W. Blackburn
Mr. Gerald W. Bobier
Mrs. Joyce Mathews-Boose
James S. and Margaret G. Boris
Dr. Tommy J. Borrell
Mr. Robert A. Bourke
Connie (Ohlman) Bradish
Mr. and Mrs. Hank Brenner
Mr. David E. Bryant
Mr. Larry W. Bryant
Mr. William C. Buchanan
Mr. Thomas N. Burke
Mrs. Joan Griffin Burpee
Mr. Robert A. Burwell
Mr. Paul Y. Byars
Garrett V. & Brenna O'Shea Cagiano
Mrs. M. Lloyce Campbell
Mr. James H. Carroll, Jr.
Mr. Alton C. Carver/Joyce Carver Realty
Chris and Linda H. Catanach
Mr. E. Ray Charles
Mr. Paul S. Charpentier
Mr. Anthony G. Ciavarelli
Jim R. and Glenda Clare
Mr. Bernard I. Cohen
Mrs. Eleanor W. Conway
Mr. Norman D. Cramer
Stanley and Rosanne Crooke
Mrs. Elaine M. Crowley
Mr. Austin R. Curry
Paul W. & Georgia Reed Danahy
Mr. Thomas M. Dankert
Mr. and Mrs. Robert A. Darr
Mr. Patrick A. Davis
Rev. Oswald Delgado
Dr. William H. Devries

Mr. Alfred R. Dickey, Jr.
Mr. Emilio DiPietro
Eugene and Grace Dodson
Ms. Amy J. Doktor
Ms. Rose Dominguez
Mr. R. Grant Donaldson
H. Hampton and Charlotte Dunn
Mr. Neal S. Elosge
Mr. Ralph C. Eubanks, Jr.
Mr. Anthony J. Falci
Mr. Richard B. Faunce
Dr. and Mrs. Martin Favata
Drs. Phyllis & Randy M. Feldman
Mrs. Margaret B. Finch-Arietta
Mr. Dennis M. Fisher
Lt. Phaedra Bert Fisher
Mr. Richard J. Fitzpatrick
Mr. Garry A. Flowers
Mr. Robert J. Fox
Lowell T. & Anita Freeman
Mr. Victor H. Fresh
Francis F. & Jane B. Fuchek
Mr. and Mrs. George W. Gage, III
Ms. Patricia Gaggi
Mr. Neil J. Gallagher
Mr. Juan A. Garcia
Mrs. Robley Hunt Garrigan
Mr. Ernest M. Garrison
Mr. Robert P. Gelzheiser
Mr. Robert J. Gesemyer
Mr. Peter L. Getzler
Mr. John Giancola
Ms. Louise Clayton Giargiari
Mr. and Mrs. John Giordano
Mr. Sam A. Giunta
Dorothy (Talbot) Glover
Margie & Jose I. Gonzalez
Mrs. Marian P. Goodbread
James and Fran Grace
Mr. Jerrold W. Gregory
Mr. and Mrs. Edward C. Gross
Mr. and Mrs. Charles R. Guess
Mr. and Mrs. W.G. Gunnoe
Mr. and Mrs. Richard B. Hadlow
C. Michael & Denise Fenimore Halfast
Mrs. Marilyn Menko Hamlin
Dr. Kenneth W. Haney
Col. and Mrs. A. J. Harageones
Dr. Everett M. Harrison
Floral Impressions, Inc.
Mr. and Mrs. John W. Harvey
Mr. Alan D. Harvill/First Florida Bank N.A.
Mr. William F. Hawk
Mrs. Nita B. Hawkins
Mr. and Mrs. G. Calvin Hayes
Mr. Gerard J. Henkel
John K. Henne
Dr. Lazaro A. Hernandez
Ernest and Barbara Hetrick
Mr. Philippe G. Hills
Mr. and Mrs. C. Harold Hippler
Bradley R. & Valerie Smith Hirvela

Continued on Page 18 . . .

C O N T R I B U T O R S

Mr. and Mrs. C. David Hoffmann
 Mr. Marvin L. Holloway
 Barbara A. Holmes
 Mr. Theron J. Hotaling, Jr.
 Mr. and Mrs. Daniel Howell
 Mr. & Mrs. George B. Howell
 Mr. Charles H. Hubner
 Mr. and Mrs. Walter R. Hudson
 Prentice & Dolores Draper Hull
 William H. Hutchins
 David M. Hyde & Eileen R. Murphy
 Mr. Robert B. Ilderton
 Mr. Lafayette Ingram, Jr.
 Ms. Stacy A. Irving
 Dr. David C. Isele
 Mr. Adrian K. James
 Katherine H. & Kenneth M. James
 Mr. Richard B. Jenkins/Beach Products, Inc.
 Dr. and Mrs. Grant C. Johnson
 Mr. Royce Kanofsky
 Mr. Kenneth D. Karpay
 Miss Frances Keating
 Mr. and Mrs. Fred H. Kenfield
 Dr. Timothy W. Kennedy
 Mr. Joe M. Klay
 Ms. Denise M. Kleinrichert
 Dr. and Mrs. Stephen Krist
 Mr. Todd V. Larson
 Mr. Bennie Lazzara
 Mr. Kenneth L. Lee
 Dr. Deborah M. Lester
 Mr. Edgel C. Lester, Jr./Carlton Fields et al.
 Mr. and Mrs. Harold C. Lewis
 Mr. John H. Lindenmeyer
 Mr. and Mrs. Arthur H. Lippitt
 Mr. and Mrs. Joel C. Lobel
 Mr. and Mrs. Brad C. Luger
 Ms. Sandra J. Luihn
 Mr. Martin Lutzk
 Ms. Jewel H. MacLear
 Mr. William A. MacQuarrie
 Mr. Scott K. Mahlum
 Mabel (Aughinbaugh) Malsbary
 Mr. Milton S. Mandell
 Mrs. Mary Catherine Manning
 Mr. Stuart C. Markman
 Christopher & Michele Marois
 Mr. and Mrs. Bert T. Martin, Jr.
 Carol (Sewell) Martin
 Mrs. Elizabeth A. Martin
 Mr. William B. Martin
 Mr. Lerac E. Martinez
 Mr. and Mrs. Hugh O. McCormick
 Ms. Catherine Peek McEwen
 Ms. Anne Marie Meegan
 Mr. E. Andrew Meeks, III
 Mr. James R. Mellaci
 Ms. Debra Merin
 Mr. and Mrs. Leon M. Mezrah
 Ms. Gail C. Militello
 Mr. and Mrs. Stephen K. Miller
 Joe D. & Hilda Bethea Mills
 Mr. Jeffrey C. Mitchell

1990-91 SPAULDING SOCIETY

Continued from Page 17

Carl William Moeller, Jr.
 Mr. Nicholas F. Mooney
 Mr. John E. Moore
 Mr. and Mrs. Tillman D. Moore
 Mr. Francis R. Morse
 ILT. Kristine A. (Tantsits) Moscatello
 Mr. Robert J. Muir
 Mr. William M. Mulholland
 Mr. Doyle E. Mullis, III
 Mr. James B. Murphy, Jr.
 Eugene H. Nichols
 Mr. Michael J. Norton
 Mr. Harold Nosti
 Mr. Guy W. Otto
 Ms. June S. Parent
 Mr. Thaddeus C. Parker
 Mr. and Mrs. E. A. Peck
 Mr. and Mrs. Michael R. Pender
 Barbara & George Pennington
 Personnel Advisors Intl. Corp.
 Mr. Charles W. Peters
 Mr. Dale N. Petersen
 Ms. Christina P. Petti
 Mr. Paul C. Petti
 Mr. and Mrs. Steven M. Platau
 Mrs. Joyce S. Plumley
 Mr. Ralph Poetsch
 Mr. Rennie K. Poirier
 Mr. Lionel R. Polo
 Mrs. Lyne C. Posey
 Mr. Robert G. Pottinger
 Dr. Richard R. Powell
 Michele Prater
 Emily & Michael Price
 Mr. Timothy Prugh/Prugh & Associates P.A.
 Mr. and Mrs. David W. Queen
 Ms. Lorraine K. Rafter
 Mr. Richard Rateau
 Mr. William M. Rea
 Mr. Gene R. Reboh
 Mrs. Mary D. Redmond
 Mr. Kenneth J. Reid
 Mr. Andrew Rey, Jr./Coopers & Lybrand
 Dr. and Mrs. William L. Rhey
 Mr. Lance David Richardson
 Mr. Alton L. Rine
 R. M. Williams Contractors
 Mr. and Mrs. Sydney Roberts
 Mr. Donald L. Robertson
 Mr. Frederick T. Rodgers
 Patricia A. & Thomas J. Rogers
 Mr. Jeffrey J. Rogo
 Mr. and Mrs. Carl David Ross
 Dr. and Mrs. Thomas V. Rossi
 Mr. and Mrs. W.R. Roth
 Mr. and Mrs. Andrew J. Russ
 Mr. Samuel C. Russell
 St. Petersburg Times
 Mr. William A. Sandman

Mr. Joseph F. Santoiana
 Mr. Craig S. Scates
 Mr. James A. Schillo
 Mr. Credo Schwab
 Mr. John P. Scioscia
 Mr. and Mrs. William R. Scott
 Mr. Marcelo J. Sempe
 Mr. John H. Sherman, Jr.
 Mr. and Mrs. Howard Shifke
 Mr. Mark M. Shine
 Mr. Lonnie G. Shrum
 Mr. Alton R. Shuman
 Mr. John Council Skinner
 Mr. William J. Smalley
 Mr. Elliot S. Smerling
 Mr. and Mrs. John H. Smiley
 Mr. Charles C. Smith
 Ms. Dawn M. Smith
 Mrs. Jeannete M. Smith
 Mr. and Mrs. Thomas V. Smith
 Ms. Sandra Snell
 Mr. and Mrs. H. B. Solmson
 Lt. Roccie A. & Alice Ossenfort Soscia
 Mr. and Mrs. Richard Stein
 Mr. Thomas O. Stelling
 Wilanne & James Stowe, Jr.
 Mr. Frank L. Straner
 Mr. Fred N. Stribling/Sea-Land Service
 Mr. Clifford J. Stuffer
 Dr. Beresford M. Swan
 Ms. Marie I. Swingley
 Mr. Frank R. Sylvester
 Tampa Credit Union
 Mr. and Mrs. Jerome R. Taylor
 Carmello and Mona Testa-Secca
 Lt. Col. Jeffrey H. Thomason
 Miss Charlotte Anne Thompson
 Mr. Douglas J. Titus, Jr.
 Mr. James M. Tomlin
 Ms. Frances Makemie Toole
 Mr. Henry R. Trout, Jr.
 Charles and Vicki Truxton
 Mr. Jeremy S. Tyree
 Unit One Incorporated
 Frank J. & Loretta Sarcone Vacanti
 Mr. Glenn Waddell
 Ms. Christine E. Walker
 Mr. Sterling Wardwell
 Samantha B. Warren
 Mr. Christopher Washburn
 Mrs. Cyril M. Weissman
 Ms. Catherine Hays Wellen
 Ms. Suzanne V. Weston
 Mr. James W. Whitehead
 Dr. and Mrs. Edwin F. Wilde
 Mr. Kenneth T. Williams
 Ms. Patricia Jinx Wilson
 Ms. Diana L. Winoker
 Mr. Steven L. Wolfson
 Mr. Joseph P. Wright
 WYNF Radio-95 YNF
 Mr. & Mrs. Lee Zeigler/George A. Levy, Inc.
 Mr. Bruce Zelazoski

C O N T R I B U T O R S

1990-91 SWORD & SHIELD

Contributors of \$100 or more to athletic programs of The University of Tampa are recognized as members of the Sword and Shield Club. With the support of these special donors, Spartan athletics continues to grow and achieve.

SWORD & SHIELD DIAMOND (\$1000 and Above)

Air Flite Rent-A-Car/Wilhelm Stedding
Mr. Thomas D. Arthur/Hav-A-Tampa
Mr. & Mrs. W. Kendall Baker
Mr. Mark Brown/Pepsi-Cola South
Champion Footwear
Mr. C.A. Daniel
Mr. Thomas M. Evans/Frame Fashions, Inc.
Mr. William G. Giesecking/Pepin
Distributing Co.
Holiday Inn Ashley Plaza
Holiday Inn Tampa International Airport
J.A. Green Plumbing & Mechanical/
John A. Green
McDonald's Sun Bowl International/
Farukh Quraishi
Mr. John Morris/Gatorade
Mr. Robert E. Morris
Mr. & Mrs. Donald M. Nairne
Mr. Frederick M. Rothenberg
Tampa Alpha Alumni Chapter
Tampa Jai-Alai/Giles L. Ellis, Jr.

The Tampa Tribune/Doyle Harvill
Dr. Eric Vlahov

SWORD & SHIELD GOLD (\$500 - \$999)

Anthony Distributors, Inc./
Salvatore Italiano
Forms Management Services/Dennis Kinard
Mr. & Mrs. George J. Montz
Mr. & Mrs. J. Ross Parker

SWORD & SHIELD RED (\$250 - \$499)

Mr. & Mrs. Sam M. Bailey
Mr. Larry J. Cymet
Rick & Sheri Ogorek
Dr. Alice Rodriguez
Mr. George E. Sprenkle
Teams/USA, Inc.

SWORD & SHIELD BOOSTER (\$100 - \$249)

Mr. & Mrs. R. Dean Akers
Mr. Erwin G. Alber, Jr.
Mr. Robert C. Bissell

Mr. Michael A. Cauley
Mr. Anthony Cutrono, Jr.
Mr. & Mrs. Robert M. Daisley
David's Pharmacy/David Cartaya
Ms. Dorothy Talbot Glover
Mr. William T. Gordon
Mr. Joseph Guerriero
Dan & Barbara Gura
Mr. Steven W. Holub & Mrs.
Elizabeth M. Willson
Honeycomb Communications, Inc./
Belkis J. Lezcano
Ms. Janet A. Hurley
Mr. Stephen Magriby
Mr. & Mrs. William D. Miller
Mr. Nicholas F. Mooney
Michael & Susan Norton
Ms. Karen Solis
Mr. & Mrs. Gil Swalls
Mr. & Mrs. James E. Sweeney

ATHLETIC CONTRIBUTORS (\$1 - \$99)

Mr. James E. Willman, Jr.

1990-91 GIFTS (\$1-\$99)

AAA Florida-Georgia
Lt. Col. Charles S. Abell
Dr. Miller K. Adams
Ms. A. Louise Agnew
Mrs. Margaret N. Agnew
Mr. Frederick W. Alf, Jr.
Ms. Evelyn L. Almand
Dr. and Mrs. E. Bruce Aman
Mr. Joseph Amihere
Ms. Margaret Robinson Amo
Ms. Cynthia M. Amor
Mr. Owen J. Anders, III
Mr. Keith R. Anderson
Mr. Matthew P. Ansbro
Mr. Roberto Archila
Mr. and Mrs. Jack A. Arnold/DJ Plus 7
Accounting Services
Mr. Jon C. Arnold
Around The Town
Mr. and Mrs. Esteban Arroyo
Mr. Henry Arzadon
Mrs. Audrey L. Ashley
Doris M. Ashley
Mr. Robert H. Ashmead
Mr. William K. Askew
Mr. William O. Atteberry
Jill (Henry) Aufiero
Mr. Todd Augarten
Mr. and Mrs. William J. Ayala

Paul M. and Lois Baer
Mr. Judson B. Baggett
Mr. Theodore I. Bahn
Mr. William G. Bails
Mr. and Mrs. Cameron A. Baker
Mr. David W. Baker
Dr. Ellen D. Baker
Mr. Richard A. Baldwin
Mr. and Mrs. Robert E. Barber
Mrs. Sandra Lima Barco
Mr. Danny C. Barnes
Mr. Edward B. Barnes
Mr. John M. Barrett
Ms. Kathy E. Bartalino
Mr. Robert J. Bartusch, Jr.
Mr. Jerry O. Batley, Jr.
Mr. and Mrs. Roger W. Baum
Mr. and Mrs. Patrick Bayard
Mr. Thomas C. Beard
Ms. Lauren L. Becker
Mr. Robert S. Begelman
Mr. and Mrs. Robert B. Bell
Mr. and Mrs. Louis Bellotto
Mr. Richard L. Bennett
Bennigan's
Mr. and Mrs. Lee M. Bentley
Miss Martha Berdeal
Mr. Thomas R. Berg
Mr. and Mrs. Bruce G. Berger

Mr. and Mrs. Gary S. Bergman
Mr. and Mrs. Thomas E. Berry
Mr. Sam G. Bessis
Mr. Howard P. Best, Jr.
Mrs. Sandra Cottle Biggerstaff
Frank Birk
Mr. Robert C. Bixby
Mr. Russell M. Blain
Mr. Robert L. Blanchard, Jr.
Mr. George L. Blanco
Deanna R. Bley
Mr. and Mrs. Earl D. Bley
Mrs. Marisa A. Bloch
Blockbuster Video
Mr. James C. Blomeley
Mrs. Clementina V. Bode
Ms. Mollie A. Boettcher
Ms. Sue Ellen Boggs
Mr. Ralph F. Bohlke
Mr. William F. Boone, II
Mr. Mark D. Bosses
Ms. Elizabeth L. Boudreau
Maj. Kenneth G. Bowen
Mr. Charles E. Bowers
Mr. Brian P. Bowman
Mrs. Marian Simmons Boyd
Mr. Marshall L. Bradley

Continued on Page 20 . . .

C O N T R I B U T O R S

Mr. Stephen G. Brady
 Dr. Philip C. Bragg
 Mr. Joel P. Braverman
 Mrs. Anne Blake Brewer
 Dr. and Mrs. Samuel E. Brick
 Mr. Donald R. Britt
 Mr. Kitson T. Broadbelt
 Mr. Orville L. Brock
 Mr. Carter D. Brooks
 Mr. Douglas K. Brooks
 Mr. Robert L. Brorein
 Ms. Mary Mott Broughton
 Ms. Sadie L. Brown
 Mr. Thomas R. Brown
 Mr. Alfred Brunette, Jr.
 Buccaneer Car Wash
 Mr. Robert A. Bunnell
 Dr. Richard L. Burdick
 Mr. William E. Burke
 Mrs. Elizabeth Burnside
 The Hon. Walter N. Burnside
 Bernardine A. (Becker) Butler
 Mr. Wayne Byrne
 Cactus Club
 Mr. Eldon L. Cage
 Mary (Licalsi) Cagnina
 Ruth (Morgan) Caldwell
 Elaine & Peter R. Cannella, Jr.
 Mrs. Estela Cannella
 Dr. Xavier F. Cannella, Jr.
 Mr. David F. Cannon
 Mr. William N. Cantrell
 Mr. Mark J. Caporin
 Mr. and Mrs. Joseph Card
 Mr. Robert C. Carlen, Jr.
 Mr. and Mrs. M. H. Carleton
 Mr. Charles A. Carlson
 Mrs. Shelly R. Carnaroli
 Mr. Randy R. Carocci
 Stella (Rogers) Carr
 The Calvin Carter Family
 Casa Gallardo
 Mr. Richard A. Case
 Mr. and Mrs. Eugene J. Casey
 Mr. Robert C. Castle
 Mr. Carl E. Cavanaugh
 CDB Italian Restaurant
 Mrs. Anne L. Cecick
 Mr. Robert W. Cecil
 Mr. Ronald M. Cento
 Ms. Kathryn Anne Chambliss
 Mrs. Annie P. Chaniel
 Mr. Francis D. Chatigny
 Mrs. Linda Lewis Chewning
 Mr. and Mrs. Tom Christian
 Mr. Jay M. Chrobak
 Mr. Edward S. Ciocys
 Dr. Axel W. Claesges
 Mr. and Mrs. John W. Clark
 Mr. Richard T. Clausi
 Mrs. Marian Dimarco Cleland
 Mary and Gregory A. Cleotelis

1990-91 GIFTS (\$1-\$99)

Continued from Page 19

Mr. Robert E. Cogan
 Jo Ann Coleman
 Ms. Michele M. Coneys
 Mr. Charles A. Conti
 Mr. Matthew D. Conway
 Mr. John R. Cooke
 Mr. Richard B. Cooper
 Mr. Donald H. Corsa
 Mr. and Mrs. Thomas S. Corse
 Ms. Susan M. Courtney
 Mrs. Diane Hovevar Couzens
 Mr. Kristin Kyle Cox
 Ms. Pauline Craver
 Lt. Col. Marcus B. Crisman
 Mr. and Mrs. Willard Crosier
 Mr. and Mrs. David Cross
 Mrs. Louise T. Cullen
 Mr. Joseph P. Curau, Jr.
 Melissa and Barry W. Curewitz
 Rev. Otto L. Dale
 Mr. William D. Dallas
 Paul W. and Georgia (Reed) Danahy
 Mrs. Ruth J. D'Angelo
 Mrs. Julia M. Darby
 Mrs. Daphne A. Darden
 Mr. Kevin Dastis
 Mrs. Lorraine Briggs Datello
 Dudley W. and Flo Davis
 Mr. Jerry D. Davis
 Ms. Sandra A. Davis
 Ms. Pamela J. Davis-Diaz
 Mrs. Bessie Benton Dean
 Ms. Jaimi R. Dean
 Mrs. Ann DeBellevue
 Mr. E. B. de Diego
 Mrs. Carrie Hernandez Deeker
 Mr. Richard L. Deland
 Mr. Nicholas J. Delzotti
 Mr. Charles W. Demarest
 Mr. Ronald L. Dennis
 Mr. Douglas P. Deschler
 Mr. Louis R. Diaz
 Ms. Catherine M. Diedrichsen
 Lt. Col. Joseph Di Stefano
 Mrs. Patricia C. Doherty
 Mr. Larry M. Dombkowski
 Mrs. Jane Stokes Donoghue
 Mr. Mark F. Douglas
 Mrs. Janice Babe Dragone
 Mr. John T. Duff
 Mr. Bruce E. Duncan
 Mr. and Mrs. Lee Duncan, Jr.
 Mr. Jacob Dunn
 Mr. David Earle Dutch
 Mr. Richard A. Duttonhofer
 Mr. Frank J. Dykeman, Jr.
 Mr. Sean T. Eaton
 Ms. Kathleen Mary Egan
 Ms. Cathleen Elisha
 Mr. and Mrs. Ray F. Ellis
 Dr. and Mrs. Marlon Ellison
 Mr. Lewis E. Emery, Jr.
 Ms. Gini L. England
 Phillip and Bonnie Eppenstein
 Mr. Keith R. Erickson
 Mr. and Mrs. William C. Erk
 Mr. William A. Esposito
 Mr. Robert A. Estes, Sr.
 Mr. and Mrs. Steven H. Fadler
 Mr. and Mrs. Hubert Farnum
 Pamela and Randall D. Feder
 Mr. Willard Fein
 Ms. E. Anne Ferguson
 Frank and Gloria R. Ferlita
 Mr. John A. Fertic
 Dr. James M. Fesmire
 Mr. Robert L. Fish
 Mrs. M. Catherine Fisher
 Lawrence T. Fitzgerald, Ph.D.
 Ms. Ellen K. Fitzpatrick
 Ms. Bethany C. Flint-Simmons
 Mr. Robert Florio
 Mr. Jerome T. Flynn, Jr.
 Dr. and Mrs. Carroll E. Fogal
 Mrs. Lucille Fleet Ford
 Mr. T. Michael Foster
 Ms. Martha A. Franco
 Ms. Shirley Frank
 Mrs. Ruby Faye Franklin
 Mr. John H. Franks
 Mrs. Charlene Frazier
 Mr. Michael A. Freedman
 Mr. Charles A. Friesema
 Ms. Kathleen H. Fuller
 Mr. and Mrs. Robert Fusco and Family
 Ms. Christine Bradley Gagnon
 Mr. Wilfred Gaier
 Mr. Martin J. Gall
 Mr. Joseph A. Gallagher
 Lt. Col. Joseph T. Gallagher
 Mr. Charles G. Gallaher
 Ms. Maria B. Gallina
 Ms. Winifred N. Game
 Mr. Claude M. Garcia
 Mr. Paul Gatta, Jr.
 Mr. Gerald L. Gillis
 Mr. Paul M. Githens
 Mr. Domenic V. Giunta
 Mrs. Deanne L. Godin
 Mr. John A. Goldstein
 Mr. Stephen J. Gonyea
 Mr. and Mrs. Ralph L. Gonzalez
 Mr. Davelis C. Goutoufas
 Mr. Ronald E. Graf
 Mrs. Marilyn Graham
 Mr. George F. Gramling
 Mr. & Mrs. George F. Gramling, III
 Mr. Anthony V. Greco
 Mrs. Miriam Davis Green
 Lt. James T. Greene

C O N T R I B U T O R S

Ms. Gloria J. Griffith
Joseph W. Griffith
Ms. Joan W. Griggs
Brian L. and Chantelle Hernandez Groene
Mr. Paul S. Groschadl
Mr. Matthew Gross
Ms. Rachelle M. Grosso
Mr. Richard H. Gruber
Capt. Gregory F. and Marybeth
M. Guenther
Mr. Paul L. Guth
Charles and Donna L. Hach
Mr. Henry A. Hacsí
Mr. Charles W. Haldane/Great Bay
Landscape Service
Mr. Seth D. Halpern
Mark J. and Heather Hamilton
Mr. Charles T. Hammond, Jr.
Cyril V. and Mary Virginia Handley
Mr. Leroy W. Hansen
Mr. and Mrs. Joseph G. Hanson
Mr. and Mrs. Clyde H. Hardee
Mr. James R. Harnett
Mrs. Margaret B. Harris
Mr. John D. Hassett
Margery and T. Wayne Hayes
Amy (Hill) Hearth
Mr. Christopher J. Helbling
Mr. Jason A. Helfman
Mr. Gibson B. Henry
Mr. and Mrs. Ricot Henry
Mrs. Claire Weiner Herer
Dr. Suzanne M. Hiebert
Mrs. Elizabeth W. Himes
Mr. Andrew Hlavach
Mr. Dan S. Ho
Mrs. Robyn K. Hoban
Mr. James H. Hockenberger
Mr. Robert P. Hoenscheid
Mrs. Dolores Ann Hoffman
Dr. and Mrs. Leon Hoke, Jr.
Mr. Robert L. Holland
Mr. Eugene A. Homer, Jr.
Ms. Stephany F. Hooper
Thelma & William H. Horne, Jr.
Mr. Gregory F. Howell
Mr. Kevin M. Hughes
Dr. Robert B. Hughlett
Elaine C. Humanitzki
Francis E. Hurn
Mr. Robert Dean Hutchison, III
Joseph M. and Jaimi R. Hyer
John H. Ide
Lt. and Mrs. Timothy P. Ingram
Rob J. and Anita Kilbourne Irons
Mr. and Mrs. Leon Izmirlian
Lt. Col. George E. Jackson
Mr. and Mrs. Gerald Jackson
Mr. Jimmie Edward Jackson
Mr. Louis Jacobson
Mr. Samuel E. Jacobson
Mr. Joel Jankowski

Mrs. Dorothy Hill Jeffery
Mr. Benjamin W. Johnson
Mrs. Lila L. Johnson
F. Bertram and Jean Johnston
Mr. Floyd C. Johnston
Col. Arthur A. Jones
Ms. Sarah Jordan-Holmes
Mr. and Mrs. Richard Josephson
Mr. Leslie Joughin, III
Mr. Jacob F. Judson
Junior League Of Tampa
Mrs. Kimberly A. Kailing-Berry
Mr. and Mrs. Bentley F. Kaplan
Dr. Robert H. Kasriel
Mrs. Ricki Rosenthal Kasse
Mr. Robert A. Kastenbaum
Ms. Andrea L. Katz
Ms. Maureen Kearney
Mr. Keith G. Kehler
Rev. David P. Keister
Mr. and Mrs. Joseph H. Kelly
Mr. and Mrs. Richard C. Kelsey
Mr. Edward T. Kendrick
Mr. Joseph H. Kerr
Mr. Richard A. Kerstein
Mrs. Carroll Thomas Kesinger
Mr. Eldon W. King
Mr. and Mrs. David A. Kinser
Michael J. and Barbara Kinsey
Thomas W. Kirkland, J.D.
Mr. William H. Kitchens
Dr. Marcy Kittner
Bruce M. and Winsome M. Klay
Mr. Dale S. Kleinfelder
Ms. Suzanne K. Klepacky
Dr. & Mrs. G. Jeffrey Klepfer
Mr. and Mrs. Fred Knox
Ms. Therese M. Kominski
Mrs. Constance L. Kone
Mr. Anthony P. Kopecky
Mr. and Mrs. Michael J. Kosiba
Mrs. Margaretta R. Kramer
Mr. Wernher R. Kuck
Ms. Anne M. Kutchmire
Ms. Juliet LaDouceur
J. Mark and Gail Landers
Mr. Paul R. Lang
Mr. Mark F. Lapp
Mr. Samuel Lasky
Miss Margaret Lauder
Mr. and Mrs. Victor Leavengood
Mr. Daniel R. LeClair
Ms. Elizabeth D. Lee
Mr. Richard H. Lee, Jr.
Dr. Lionel O. Leon, Jr.
Rebekkah (Housholder) Leonard
Mr. Edward C. Levine
Mr. Joseph S. Levy
Mr. and Mrs. C. William Liebel
Mr. Steven E. Liebel
Mrs. Lisa Rosen Lievense
Dr. Paul J. Linnehan

Mr. Charles M. Linville
Mr. Frederick G. Little
Ms. Susan R. Little
Dr. William J. Lohman, Jr. & Mrs. Tasha
H. Lohman
Mr. S. Hansen Long
Patricia A. Lord
Mr. and Mrs. George J. Lorenz
Mr. William R. Lorton
Lt. Col. Craig L. Lowman
Mr. Edward R. Lowy
Mr. Jeffrey Lucas
Lufthansa German Airlines
Dave and Jill Luhrsens/American Business
Locations, Inc.
Ms. Norma E. Lurie
Sharon J. Lynch
Elizabeth R. Lynn
Mr. and Mrs. John M. Lynn, Jr.
Mr. Keith D. Machette
Mr. and Mrs. John R. Madden
Mr. Michael E. Mahoney
Main Street Six Theatres
Mr. Marc W. Malavasic
Mr. Wayne Mallo
Mr. Frank Maniscalco
Dr. Donald Marinelli
Mr. Michael G. Marino
Mr. Mel P. Marrone
Mr. Edward R. Martel
Mr. David A. Martin
Mr. Edward K. Martin
Mr. Jack B. Martin, Jr.
Mr. James J. Martindale
Mr. Francisco R. Martinez
Mr. John L. Martinez
Mr. and Mrs. W.E. Marvin
Mr. Richard R. Massey, II
Dr. Richard Mathews
Durward L. and Grace Matthews
Mr. Richard D. Maun
Mr. Ludwig J. Mazur
Harry and Geneva McCartney
MSG. Joe C. McCloney
Ms. Alexandra McConnell
Mrs. Norma J. McCumber
Mr. Thomas H. McDonald
Drs. Michael W. & Daria P. McDonough
Mr. Shel McGuire
Suzanne Townsend McInerney
Mr. George L. McKay
Mr. & Mrs. Richard S. McKay
Mr. & Mrs. David B. McLaughlin
David and Ellen McLean
Mr. Ronald Albert McMakin
Ms. Jeanne L. McNiff
Mr. James A. McPhail, Sr.
Carol Moses McTamney
Maurine (Robles) McTyre
Mr. Stephen B. Mead
Valerie K. (Stubbs) Mecutchen

Continued on Page 22 . . .

C O N T R I B U T O R S

Dr. Howard James Meginley, Jr.
 Dr. Michael J. Mendelsohn
 Mr. Robert F. Meredith
 Mrs. Nancy Messham
 Mr. Donald M. Metzger
 Mr. Leroy B. Meyer, Jr.
 Mr. A. Douglas Middlebrook
 Dr. Barry Miller
 Doris (Cargile) Miller
 Mrs. Margaret Potter Miller
 The Hon. Thomas A. Miller, Sr.
 Mr. Todd M. Miller
 Mr. Walter V. Minahan
 Ms. Barbara G. Mitchell
 Mr. James J. Moore
 Mr. William T. Moore
 Mrs. Rose Cueto Morales
 Mrs. Bette Morris
 Ms. Jennifer G. Morris
 Ms. Mary Elizabeth Morris
 Lt. and Mrs. David G. Morrow
 Miss Suzanne Morse
 Mr. Lawrence E. Mulcahy
 Dr. and Mrs. R. Jack Munyan
 Mr. Russell J. Munyan, Jr.
 Mr. Clarence L. Murphy
 Daniel J. & Mary Pratt Murphy
 Mr. and Mrs. L. T. Murphy
 Ms. Bonnie Schall Murray
 Ms. Kathleen M. Murray
 Ms. Sharon E. Musser
 Mr. Philip J. Nastyn
 Col. Collin L. Neal
 Mrs. Jane Close Nepveux
 Hazel B. (Bryan) Newby
 Mr. William J. Newton
 Northdale Court General Cinema
 Mary (Duncan) Noto
 Brenda and George A. Nousiainen
 Mrs. Barbara Haskins Oberman
 Mr. John P. O'Brien
 Mr. Joseph B. Obusek and
 Mrs. Mary Anne Obusek
 Mr. Rudolph R. Odermatt
 Anne M. (McCurdy) O'Grady
 Mr. Hugh T. O'Hara
 Mr. John J. O'Hara, Jr.
 Mr. Herbert P. Ohm
 Mr. Marvin E. Oliver
 Mr. Alfred Olsen
 Mr. Donald L. Olsen
 Rezia (White) Olson
 Mr. Mark H. O'Malley
 Ms. Lydia S. Ophaug
 Mr. Joseph P. Orlando
 Mr. and Mrs. Jose R. Oural
 Mr. John J. Owens
 Mr. Robert W. Owens
 Ms. Marian J. Paeth
 Mr. Kevin P. Pangburn
 Mr. Robert W. Parke
 Mr. Walter J. Parsick

1990-91 GIFTS (\$1-\$99)

Continued from Page 21

Alex and Rose Paskay
 Mr. Christopher M. Pastina
 Ms. Cherlyn Paul
 Mr. Max D. Payne
 Mrs. Lois D. Pearce
 Ms. Pamela J. Pearson
 Ms. Kathleen Taormina Peck
 Mr. Jerry Pedrero
 Mrs. Katherine Fox Pekny
 Mr. Tim J. Pelot
 Mrs. Jo-Ellen Percival
 Mr. and Mrs. Mickey Perlow
 Mrs. Ann-Sue Bell Peterson
 Mr. Robert G. Petrisko
 Robert A. & Christine Pizzi Pette
 Leslie (Wheeler) Pettygrove
 Ms. Sonia E. Picallo
 Mrs. Linda Pearlman Pickel
 Thomas A. & Lucile Lawson Pignataro
 Mr. and Mrs. Roy E. Pinch, Jr.
 Mr. Joseph T. Potuzak, Jr.
 Miss Barbara K. Powell
 Ms. Marie Prado
 Dr. Kristen J. Price
 Mr. William J. Priff
 Mr. John T. Primm
 Mr. Randell L. Prince
 Mr. John A. Priore
 Mr. Tony Provenzano
 Dr. Fred Punzo & Mrs. Mary Ann Punzo
 Mrs. Susan Quackenbush
 Ms. Kathy Quesnell
 Mr. Martyn L. Quinn
 Ms. Carolyn B. Rabun
 Dr. Margaret H. Raffa
 Miss Jean A. Ramaglia
 Mr. Augusto Ramos
 Ms. Krisitianne Rapp
 Mr. Woodrow A. Ray
 Ms. Dorothy J. Reagin
 Mr. and Mrs. Richard W. Reeves
 Dr. Barbara Reischmann
 Mr. Carl K. Renninger
 Mrs. Catharine E. Reynolds
 Mr. and Mrs. Thomas H. Rice
 Mr. Joseph F. Rich
 Ms. Tammy Rich
 Rico's Pizza Shop
 Dr. Bruce Thomas Ridinger
 Mr. Lloyd L. Roark
 Mr. David A. Robbins
 Ms. Donna M. Robinson
 Mr. George R. Robinson, III
 Mr. Stephen R. Rogers, Sr.
 Mr. Alfonso Romanello
 Mr. Kenneth E. Rosa
 Mr. Mitchell J. Rosensweet
 Mr. Phillip L. Rosing

Ms. Nancy Kemetick Ross
 Jack and Anne L. Rowland
 Mr. and Mrs. Michael S. Rubio
 Mr. Juan M. Ruiseco/Caribe Trading
 Corporation
 Mrs. Mary B. Rumph
 Ms. Gloria C. Runton
 Mrs. Karen M. Russo
 Mr. Edward J. Sadlowski
 Mr. Jose M. Sanchez
 Mr. James Sanders
 Mr. and Mrs. Sergio N. Santana
 Mrs. Rayma Santos
 Mr. Nicanor S. Santosdedios
 Mr. Moses J. Sawney
 Mr. Eugene D. Sawyer
 Mr. Edgar C. Sayles, Jr.
 Mr. Daniel D. Scaringi
 Marion G. Schandle
 Mr. Robert E. Schatzman
 Mrs. Joanne Hattum Schmidt
 Mrs. Lori Reith Schneider
 Mr. Patrick O. Schneider
 Mr. Scott A. Schneider
 Mr. John N. Schofield, Jr.
 William "Fritz" Scholze & Frederick
 E. Scholze
 Ms. Jane M. Schroeder
 Mrs. Priscilla R. Schultz
 Mr. Edward C. Schuppenhauer
 Mrs. Catharine Scott
 Mr. Leonard C. Scoville
 Mr. Charles F. Sears
 Mr. Frank V. Selph, Sr.
 Mr. James M. Shattuck
 Marjorie (Dennis) Sherrill
 Mr. Stephen E. Shine
 Mr. John R. Shurley, III
 Mr. Ernest E. Siek, Jr.
 Mrs. Joann Mottet Silka
 Ms. Karen M. Simon
 Mr. Henry S. Simonds
 Mr. Jeffrey D. Singer
 Dr. Darryl G. Singleton
 Chantima Prapapant Sirodom
 Ms. Joann L. Sirota
 Ms. Tami J. Skifstad
 Mr. Alan M. Slutsky
 Mr. Richard L. Slye
 Mr. James D. Smalley
 Mr. Fletcher L. Smiley
 Mr. Albert E. Smith
 Ms. Anne E. Smith
 Mr. Clyde B. Smith, III
 Mrs. Ella Smith
 Mrs. Juanita A. Smith
 Mr. Victor S. Smith
 Dr. and Mrs. Terry W. Snell
 Mrs. Victoria M. Spain
 Mr. Ira Spear
 Mr. Robert L. Spencer
 Mr. Willard A. Spencer

C O N T R I B U T O R S

Sheila Spicola
Mr. Gary L. Spinelli
Terrance E. & Sherill Stahl
Diana (Ray) Stanley
Ms. Barbara A. Stanton
Mr. Charles A. Stanton
Mr. Neil Starr
Ms. Caren B. Staskin
Mr. and Mrs. Richard N. Stein
Ralph and Marlene Steinberg
Ms. Leslie A. Steward
Mrs. Jeanne Chitester Stinger
Mr. and Mrs. Jimmie L. Stokes
Mr. Willie J. Stokes
Mr. Stephen Stonewell
Dr. Ralph E. Stout
Pamela W. Strada
Mr. Jackson B. Strawn
Ms. Margaret C. Stumbo
Emmanuel J. Suarez
Frederick C. & Carol Grandberg Sundberg
Mr. C. Michael Sunderland
George W. Suter
Mr. E. Daniel Swanson
Tampa Pitcher Show
Tampa Theatre
Mr. James G. Tarwater
Ms. Shelli D. Taylor
Ms. Brenda Thaler
Dr. and Mrs. C. D. Tharp
The Nature Shop
Ms. Ella Lou Thomas
Tip Top Car Wash

Mr. John C. Todd, III
Mrs. Lia Martinez Toledo
Mr. Michael Anthony Tommasi
Mr. Lewis W. Tougaw
Ms. Mary Elizabeth Tounge
Mr. and Mrs. Santo Trafficante
Mr. Daniel Traugott
MSG. James A. Troche
Dr. Michael H. Truscott
Mr. Timothy R. Trzcinski
Mr. Douglas A. Tulp
Mrs. Martha H. Turner
Mr. J. Patrick Turtle
Mr. Ronald M. Udelson
Mr. Charles C. Underwood
US Air
Mr. Matt Valaes
Ms. Marie A. Valenti
Capt. Anthony R. Vanchieri
Dr. Albert C. Van Dusen
Dr. Edward F. Van Eepoel
Mr. Alva A. Van Fleet
Mr. James R. Verkler
Mr. James W. Voss, Jr.
Mr. William F. Walker
Mrs. Mary Anne Wall
Mr. John F. Walsh
Mrs. Louise E. Warner
Mr. Robert D. Warren
Wendell D. Waters
Mrs. Kathryn P. Weed
Mr. and Mrs. John D. Weekley
Mr. Douglas R. Weg

Ms. Ruth Wernick
Mr. Lawrence P. Westfield
Mr. and Mrs. Malcolm Westly
Jacqueline (Beltram) Whatley
Mrs. Audrey L. White
Mr. Daniel R. White
Mr. Edward D. White, III
Mr. Geoffrey A. White
Mrs. Jessica L. Whitman
Lt. Col. John N. Wiegner
Patricia Livingston Wilbanks
Mr. Paul D. Wilbert
Mrs. Anita E. Wilder
Mrs. Kimberly S. Wiley
Mr. Jack L. Williams, Jr.
Mr. Jeffrey L. Williams
Stephen J. & Beverly Williamson
Ms. Jeanne Wiltse-Royston
Mr. Otis Ellsworth Winn
Mrs. Sheila J. Winshurst
Ms. Lynona D. Woodbury
Mrs. Sandra Weingarten Woolf
Mr. Brian S. Wormser
Mrs. Mary Greenwald Wotring
Mr. Andre R. Wyatt
Mrs. Susan Gibson Wynn
George and Cynthia E. Xenick
Manuel and Josephine Yglesias
Mr. James A. Youndt
Mr. and Mrs. Milton P. Zamore
Mr. Henry P. Zaranski
Mr. Michael C. Zerofsky
Mr. and Mrs. F.R. Zimmerman

IN MEMORIAM

MARIETTA E. BERGHOFFER
Mr. and Mrs. William Erk
HOWARD L. BEYNON
Mr. and Mrs. William W. Read
WARREN WILLIAM BRAINERD
AAA Travel Florida-Georgia
Mrs. Anne L. Cecick
Mr. and Mrs. Hubert Farnum
Mrs. M. Catherine Fisher
Mr. and Mrs. Robert Fusco & Family
Mr. and Mrs. George F. Gramling, Jr.
Mr. and Mrs. George F. Gramling, III
Ms. Marion G. Schandle
Mr. and Mrs. Robert E. Schatzman, Jr.
ETHEL BROREIN
Mr. and Mrs. Fred D. Learey
MARVIN BROWN
Mr. and Mrs. William W. Read
ISABEL F. CARRENO
Mr. and Mrs. Alfred S. Austin
JAMES A. CLENDINEN
Mr. and Mrs. Alfred S. Austin
The Chisellers, Inc.
Dr. and Mrs. David M. Delo
Ms. Juliette M. McKay
Mrs. Jeannete M. Smith

Mrs. Kathryn Hill Turner
Mrs. Margaret T. Van Eepoel
Mr. and Mrs. John D. Weekley
FRANK J. CLINTON
Mr. and Mrs. John H. Smiley, Sr.
THEODORE J. CONWAY
Mrs. Eleanor W. Conway
THEODORE DISTLER
Dr. and Mrs. David M. Delo
ETHELENE FORGY
The Chisellers, Inc.
Mr. and Mrs. James M. Kelly
MRS. FRANK (PATTI) FRANKLAND
Dr. and Mrs. David M. Delo
Mr. and Mrs. Bruce A. Samson
LARRY GIARGIARI
Ms. Louise Clayton Giargiari
MRS. JOHN E. HARRIS, JR.
The Mary E. Parker Foundation
GORDON G. HAWKINS
Mrs. Nita B. Hawkins
VERA HECKER
Mr. and Mrs. Alfred S. Austin
MOSELLA O. HILL
Elizabeth W. Himes

WALTER B. HOY
Mr. and Mrs. Charles A. Carlson
Ms. Kathleen H. Fuller
Harry and Geneva McCartney
Drs. Michael W. and Daria P. McDonough
Mr. and Mrs. L. T. Murphy
Mr. and Mrs. John H. Smiley, Sr.
Mr. and Mrs. Charles C. Underwood
FRANK D. HUTCHINS
Dr. and Mrs. David M. Delo
ROSEMARY JOHNSTON
Mr. and Mrs. Lee Bentley
SYDNEY LENFESTY
Mrs. Jeannete M. Smith
P. SCOTT LINDER
Mr. and Mrs. Alfred S. Austin
Mr. and Mrs. Fred D. Learey
AUDREY LOTT
The Chisellers, Inc.
JOHN WADE LOVELACE
Mr. and Mrs. William W. Read
WILLIAM S. MARBOURG
Mr. and Mrs. John H. Smiley, Sr.

Continued on Page 24. . .

C O N T R I B U T O R S

W. THOMAS MORGAN

The Chisellers, Inc.
Elizabeth W. Himes
Mrs. Jeannete M. Smith

CONNIE NEWTON

Mr. and Mrs. V. L. Elliott & Connie

DR. GUS PERDIGON

Mr. and Mrs. Alfred S. Austin
The Chisellers, Inc.

Dr. and Mrs. David M. Delo

WILBUR H. PURCELL

Mr. and Mrs. William W. Read

DR. JOHN B. READ

Mr. and Mrs. William W. Read

MRS. JOHN ROSENBURG

Mr. and Mrs. Fred D. Learey

IN MEMORIAM

Continued from Page 23

MARY LOUISE SAMSON

The Chisellers, Inc.
Mr. and Mrs. Fred D. Learey
The Calvin Carter Family
Mr. and Mrs. Richard W. Reeves
Mr. and Mrs. T. Terrell Sessums

WILLIAM A. SETZER

Mr. and Mrs. Bruce A. Samson

BOB SPENCER

Johnette Ellison

DR. STEPHEN L. SPERONIS

Lt. Col. Jeffrey H. Thomason
WALTER C. WILSON
Mr. and Mrs. Charles G. Gallagher
CURRIE B. WITT

Mrs. Richard S. McKay

Mrs. Jeannete M. Smith

MR. AND MRS. R. C. WOODARD

Dr. Albert C. Van Dusen

ROBERT TODD WOODS

Mr. and Mrs. Alfred S. Austin

The Chisellers, Inc.

Elizabeth R. Lynn

David and Ellen McLean

SPECIAL GIFTS

IN HONOR OF THE BIRTH OF
CHRISTOPHER BROCK BLOMBERG

Mr. Philippe G. Hills

IN HONOR OF BIRTHDAY OF

WILLIAM F. BOONE, III

W. F. Boone, II

IN HONOR OF JON KALTMAN

Mr. and Mrs. Eric Kaltman

IN HONOR OF ANDREW EVAN
LIPPITT

Mr. Arthur H. Lippitt

IN HONOR OF THE MARRIAGE OF
SCOTT & LORI SCHNEIDER

Mr. Philippe G. Hills

IN HONOR OF BIRTHDAY OF

GEORGE STEINBRENNER

Mr. and Mrs. Alfred S. Austin

1990-91 ALUMNI DONORS

'33

William A. Gillen

'35

Miller K. Adams
Eldon L. Cage
Carlisle Hutchinson
Dorothy Hill Jeffery
Harry McCartney
Valerie K. (Stubbs)
Mecutchen
Mary B. Rumph

'36

William C. Buchanan
Domenic V. Giunta
Sophie T. Kurtz
O. William Moody, Jr.
John H. Smiley, Sr.
Victoria M. Spain

'37

Dorothy (Talbot) Glover
Marjorie (Dennis) Sherrill
Albert C. Van Dusen

'38

Robert B. Hughlett
Lafayette Ingram, Jr.
F. Bertram Johnston
Lois (McGucken)
McCormick
Mark M. Shine

'39

Braulio Alonso
Stella (Rogers) Carr
Oswald Delgado
William Dmytryk
H. Hampton Dunn
Ronald E. Graf
Frances Keating
Jewel (Hamilton) MacLear
Anne (McCurdy) O'Grady
Richard R. Powell
Kenneth J. Reid
Frederick T. Rodgers
Alva A. Van Fleet
Wendell D. Waters
Alvin P. Yorkunas

'40

Margaret (Neef) Agnew
Edward B. Barnes
Martha A. Franco
Jose I. Gonzalez
Cyril V. Handley
Thelma Horne
William H. Horne, Jr.
Florence Rogers Hurn
Robert H. Kasriel
Dale N. Petersen
Margaret H. Raffa
John H. Sherman, Jr.
Ella (Berry) Smith
Kathryn P. Weed

'41

Mark J. Ball, Jr.
Clyde R. Bergwin

Frances (Sessions)

Hoffmann
Frank Maniscalco
Margaret (Reading) Ragg
Alton L. Rine
Albert E. Smith
Celeste (Dervaes)
Whitehead

'42

Sam G. Bessis
Paul Y. Byars
Mary Eleanor (Mercer)
Cline

Lee Duncan, Jr.

Jacob Dunn

Carroll Thomas Kesinger

William W. Read

James W. Whitehead

'43

Ruth (Morgan) Caldwell

'44

Malcolm E. Beard
Elizabeth (Erwin) Burnside
M. H. Carleton
Margie (Casal) Gonzalez
Miriam Davis Green
Margaret (Bachman) Harris
Mabel (Aughinbaugh)
Malsbary
Maurine (Robles) McTyre
Hilda (Betha) Mills
Gloria C. Runton

'45

Mary Catherine (Martin)
Manning
Bette Morris
Dorothy (Giles) Read

'46

Hazel (Bryan) Newby

'47

Alfred S. Austin
Mary (Leone) Cleotelis
Bruce M. Klay
Joe D. Mills

'48

E. Bruce Aman
Mary (Licalsi) Cagnina
Otto L. Dale
Gloria (Rodriguez) Ferlita
Charles Hach
Roy E. Pinch, Jr.
George R. Robinson, III
James Sanders

'49

W. Kendall Baker
Donald R. Britt
Janice Babe Dragone
Charles T. Hammond, Jr.
Mary Virginia (Fletcher)
Handley
Harry M. Hobbs
Benjamin W. Johnson
Katie Keene

William J. Priff

Credo Schwab
Thomas V. Smith

'50

Milton O. Bedingfield
Thomas E. Bissonnette
Gregory A. Cleotelis
Norman D. Cramer
Thomas M. Dankert
Bessie Benton Dean
Robert L. Fish
Gerald Jackson
Edward T. Kendrick
Fred H. Kenfield
Margaret Potter Miller
Joyce S. Plumley
Michale S. Rubio
Milton P. Zamore
Henry P. Zaranski

'51

Bruce W. Adams
Bernard I. Cohen
Donald H. Corsa
Paul W. Danahy, Jr.
Carroll E. Fogal
Perry O. Keene
John H. Lindenmeyer
John L. Martinez
James A. McPhail, Sr.
A. Douglas Middlebrook
Collin L. Neal
Lloyd L. Roark
Alfonso Romanello

C O N T R I B U T O R S

Robert E. Scott
Frank V. Selph, Sr.
Emmanuel J. Suarez

'52

Elizabeth Sperry Birk
Wallace W. Blackburn
Robert L. Brorein
Georgia (Reed) Danahy
Victor H. Fresh
Paul Gatta, Jr.
Henry A. Hacs
Margaretta R. Kramer
Alice Rodriguez
Priscilla R. Schultz
Leonard C. Scoville
Frank S. Sinkwich
Juanita A. Smith

'53

Walter N. Burnside
Robert E. Cogan
Richard H. Gruber
Clyde H. Hardee
Dale S. Kleinfelder
George J. Montz
Daniel D. Scaringi
Ralph Steinberg

'54

Louise (Twyman) Cullen
Mary (Duncan) Noto
Tony Provenzano
Stephen R. Rogers, Sr.
Ernest E. Siek, Jr.
Robert L. Spencer

'55

John M. Lynn, Jr.
Charles E. Fisher, Sr.
Donald L. Olsen
E. A. Peck
Joseph J. Zalupski

'56

Hector Alcalde
William D. Dallas
Jean (Bonham) Johnston
Walter V. Minahan
Rose Cueto Morales
Doris (Cargile) Miller
Kenneth T. Williams
Vilma (Fernandez)
Zalupski

'57

Austin R. Curry
Louise W. Erk
Gibson B. Henry
Etelvina A. Hutchins
Robert Dean Hutchison, III
Tillman D. Moore
Jane Close Nepveux
Thomas J. Rogers
Manuel J. Yglesias

'58

James C. Blomeley
James M. Kelly

Joe M. Klay
Richard H. Lee, Jr.
Lionel O. Leon, Jr.
George L. McKay
Patricia A. (Bullard) Rogers
Marie I. Swingley
James G. Tarwater
Glenn Waddell
Audrey (Letourneur)
White

'59

George L. Blanco
Bernardine A. (Becker)
Butler
E. B. de Diego
Robert Florio
Francis F. Fuchek
Jane (Bradley) Fuchek
Thomas A. Miller, Sr.

'60

Howard P. Best, Jr.
Gerald W. Bobier
Calvin L. Catalano
Lawrence T. Fitzgerald
Lowell T. Freeman
Sam A. Giunta
John N. Harrison, III
Sonia Edilla Picallo
Barbara (Sapp)
Reischmann
James F. Shearer
Diana (Ray) Stanley
Ralph E. Stout
Richard C. Swirbul
Lewis W. Tougaw
Andre R. Wyatt

'61

Margaret Robinson Amo
Thomas E. Berry, Jr.
Robert A. Burwell
Willard Fein
Anita (Gonzalez) Freeman
James R. Harnett
Joseph H. Kerr
S. Hansen Long
Guy W. Otto
Dennis F. Pupello
Dorothy J. Reagin
John N. Schofield, Jr.
Jeanne Wiltse-Royston

'62

Axel W. Claesges
Carrie Hernandez Deeker
T. Michael Foster
Marian P. Goodbread
George E. Jackson
James J. Martindale
Joseph B. Obusek
John T. Primm
Jean A. Ramaglia
Jose M. Sanchez
William J. Smalley
Victor S. Smith
Marlene Steinberg

'63

Flo (Brown) Davis
Theron J. Hotaling, Jr.
Walter R. Hudson
Robert D. Mohr
Brenda (Baggett)
Nousiainen
George A. Nousiainen
Mary Anne Obusek
Lionel R. Polo
Augusto Ramos
Samuel J. Rampello
Henry R. Trout, Jr.
Frank J. Vacanti, Jr.
Jessica L. Whitman
Mary Greenwald Wotring
Cynthia E. (Kladis) Xenick

'64

Norma (Schwendau) Bell
Thomas N. Burke
Robert W. Cecil
Marcus B. Crisman
Lorraine Briggs Datello
Aaron H. Dowd
Robert J. Fox
Jacob F. Judson
Nicholas G. Maragos
William A. Sandman
Catharine (Tucker) Scott
James D. Smalley
James G. Stephenson

'65

Paul W. Babikow
David W. Baker
Sandra Lima Barco
Gilbert De Meza
Patricia (Cunningham)
Doherty
Lucille Fleet Ford
William A. Gibson
Marilyn (Bronstein)
Graham
Kevin M. Hughes
Richard R. Massey, II
Durward L. Matthews
Barry Miller
Suzanne Morse
Clarence L. Murphy
Walter J. Parsick
Edward J. Sadlowski
John R. Shurley, III
Richard L. Slye
Wilanne (Starling) Stowe
Clifford J. Stuffer
Robert D. Warren
Lawrence P. Westfield

'66

Leonard N. Altamura
Ralph F. Bohlke
Wayne Byrne
Estela (Gual) Cannella
Frank Cisneros
Julia (Mullinax) Darby
Dudley W. Davis
David Earle Dutch

E. Anne (Plummer)
Ferguson
Stephen P. Hess
Martin Lutzk
Harold Nosti
Joseph P. Orlando
Jerome D. Quinn
Eugene D. Sawyer
Malcolm Westly
Jacqueline (Beltram)
Whately
Otis Ellsworth Winn
Sandra Weingarten Woolf

'67

Owen J. Anders, III
Robert H. Ashmead
Joel P. Braverman
Garrett V. Cagiano
Richard B. Cooper
Ralph C. Eubanks, Jr.
Richard B. Faunce
Daisy Bowman Fisher
Edward K. Martin
Thomas H. McDonald
Suzanne Townsend
McInerney
Robert F. Meredith
Alfred Olsen
Charles A. Stanton
James Stowe, Jr.
Frank L. Straner
Russell L. Thompson, Jr.

'68

Kitson T. Broadbelt
Anthony G. Ciavarelli
Jane Stokes Donoghue
Gerald W. Eppley
Thomas M. Evans
Joseph T. Gallagher
Seth D. Halpern
Dolores Ann Hoffman
Norma J. McCumber
Ronald Albert McMakin
Hilda (Fulgueira) Oural
Andrew L. Pink
Jack Rodriguez
Patricia Livingston
Wilbanks

'69

Marian Simmons Boyd
Marshall L. Bradley
Brenna O'Shea Cagiano
Linda Lewis Chewning
Amy J. Doktor
Margery (Oleskie) Hayes
T. Wayne Hayes
Claire Weiner Herer
Maureen Kearney
Rebekkah (Housholder)
Leonard
Edward C. Levine
Francisco R. Martinez
Howard James
Meginley, Jr.
Lonnie G. Shrum

Henry S. Simonds
E. Daniel Swanson
Brenda Thaler
James A. Troche
Martha H. Turner

'70

Robert L. Blanchard, Jr.
Joyce Mathews-Boose
Connie (Ohlman) Bradish
Orville L. Brock
M. Lloyce Campbell
Randy R. Carocci
Anthony Cutrono, Jr.
Jerry D. Davis
Bruce E. Duncan
Wilfred Gaier
Joan Kelly Garrison
Charles W. Haldane
John D. Hassett
Jason A. Helfman
Robert T. Newman
William J. Newton
Kathleen Taormina Peck
Fred E. Pollock
Jeffrey D. Singer
William F. Walker

'71

Henry Arzadon
William O. Atteberry
William E. Burke
Robert C. Carlen, Jr.
Ronald M. Cento
Richard T. Clausi
Marian Dimarco Cleland
Charles A. Conti
Nicholas J. Delzotti
Pamela (Cornwell) Feder
John H. Franks
Martin J. Gall
Robley Hunt Garrigan
Paul L. Guth
Marilyn Menko Hamlin
Eugene A. Homer, Jr.
Gregory F. Howell
John H. Ide
Robert A. Kastenbaum
Kenneth L. Lee
William B. Martin
William T. Moore
Scott K. Mahlum
E. Andrew Meeks, III
Daniel J. Murphy, Sr.
Rudolph R. Odermatt
Robert W. Owens
Pamela J. (Hudson)
Pearson
Robert G. Pottinger
Barbara K. Powell
Susan (Scolnick)
Quackenbush
Donna M. (Aller) Robinson
Joann Mottet Shepard
Michael Anthony Tommasi
Ruth Wernick
Brian S. Wormser
James A. Youndt

Continued on Page 26. . .

C O N T R I B U T O R S

'72

Martin Andersen, Jr.
Thomas R. Berg
Robert C. Bissell
Alfred Brunette, Jr.
John R. Cooke
Thomas S. Corse
Ronald L. Dennis
Robert A. Estes, Sr.
Randall D. Feder
Neil J. Gallagher
Paul S. Groschadl
Gerard J. Henkel
Adrian K. James
Arthur A. Jones
Keith G. Kehler
Charles W. Peters
Gene R. Reboh
Samuel C. Russell
Alan M. Slutsky
Charles C. Smith
Terrance E. Stahl
Willie J. Stokes
Jackson B. Strawn
Carol Granberg Sundberg
Richard C. Thomas
Marie A. Valenti
Steven L. Wolfson

'73

Brigitte Hinz Andersen
Judson B. Baggett
Kenneth G. Bowen
Charles E. Bowers
Carter D. Brooks
Douglas K. Brooks
Joseph Di Stefano
Frank J. Dykeman, Jr.
William A. Esposito
Joseph A. Gallagher
Thomas W. Kirkland, J.D.
Joe C. McCloney
Michael R. Pender, Jr.
Lyne (Carr) Posey
Gary L. Spinelli
Jeffrey H. Thomason
Douglas A. Tulp

'74

Michelle (Lepore) Barry
Sandra Cottle Biggerstaff
Clementina (Varona) Bode
Dennis M. Fisher
Joan (Wyeth) Griggs
James H. Hockenberger
David M. Hyde
Ricki Rosenthal Kasse
William H. Kitchens
William R. Lorton
Stephen Magriby
Francis R. Morse
Eileen R. Murphy
Marvin E. Oliver
Mark H. O'Malley
Robert W. Parke
Max D. Payne
Robert G. Petrisko

Chantima Prapapant
Sirodom
Dawn M. Smith
Sherill (Zucker) Stahl

'75

William D. Miller
Danny C. Barnes
Mark J. Caporin
Steven H. Fadler
Peter L. Getzler
Jerrold W. Gregory
Bradley R. Hirvela
Valerie Smith Hirvela
Anthony P. Kopecky
Allan Kwok
Samuel Lasky
David A. Luhrsens
Donald Marinelli
Mel P. Marrone
William D. Miller
James J. Moore
Nancy Kemetick Ross
Jimmie L. Stokes
Lorretta Sarcone Vacanti
Mary Anne (Levings) Wall

'76

Charles S. Abell
Robert J. Bartusch, Jr.
Robert S. Begelman
Douglas J. Bender
Martha Berdeal
Herman O. Bips, III
Robert C. Bixby
Philip C. Bragg
Anne Blake Brewer
Sadie L. Brown
Carl E. Cavanaugh
Matthew D. Conway
Diane Hocevar Couzens
Virginia M. Covington
Kevin Dastis
Louis R. Diaz
Larry M. Dombkowski
Mark F. Douglas
Richard J. Fitzpatrick
Vincent A. Hoover
David P. Keister
Paul R. Lang
Milton S. Mandell
Michael G. Marino
Carol (Sewell) Martin
Gene E. Moll
John J. O'Hara, Jr.
Herbert P. Ohm
Marian J. Paeth
Jerry Pedrero
Ann-Sue Bell Peterson
John A. Priore
William M. Rea
Edward C. Schuppenhauer
Charles F. Sears
Alton R. Shuman

1990-91 ALUMNI DONORS

Continued from Page 25

Anne E. Smith
Caren B. Staskin
James M. Tomlin
James W. Voss, Jr.
Daniel R. White

'77

Jon C. Arnold
Kathy (Erickson) Bartalino
Francis D. Chatigny
Charles W. Demarest
Anthony J. Falci
Gerald L. Gillis
Lila L. (Faulk) Johnson
Eldon W. King
Charles M. Linville
Norma E. Lurie
Nancy (Rubenstein)
Messham
Marc W. Malavasic
Barbara G. Mitchell
Rezia (White) Olson
Woodrow A. Ray
Joanne Hattum Schmidt
Jeanne Chitester Stinger
Frederick C. Sundberg
George W. Suter
Jerome R. Taylor
William G. Thomas, Jr.
Charles M. Truxton
Jack L. Williams, Jr.
Susan Gibson Wynn
Josephine (Rey) Yglesias

'78

Xavier F. Cannella, Jr.
Paul S. Charpentier
Robert W. Compton
Sandra A. Davis
David W. Devine
Alfred R. Dickey, Jr.
Lewis E. Emery, Jr.
William F. Hawk
Stacy A. Irving
Constance L. Kone
Philip J. Nastyn
Tim J. Pelot
Rennie K. Poirier
Bruce Thomas Ridinger
Margaret C. Stumbo
Douglas R. Weg
John N. Wiegner
Beverly (Roy) Williamson

'79

Frederick W. Alf, Jr.
Joseph Amihere
William F. Boone, II
William N. Cantrell
Neal S. Elosge
Gini L. England
John A. Fertic
Garry A. Flowers

Robert P. Gelzheiser
David A. Kinser
Harold C. Lewis
Todd M. Miller
Leslie (Wheeler) Pettygrove
Ronald M. Udelson
Stephen J. Williamson
Diana L. Winoker

'80

Peter R. Cannella, Jr.
Deborah D. Compton
Winifred N. Game
Michael C. Lauder
Joseph S. Levy
Edward R. Lowy
James P. O'Drobinak
Katherine Fox Pekny
Fred N. Stribling
C. Michael Sunderland
Anthony R. Vanchieri

'81

Matthew P. Ansbro
Roberto Archila
Charles E. August, Jr.
Susanne Bell
Robert A. Bourke
Larry W. Bryant
Elaine (Clifford) Cannella
Daphne A. (Pappas)
Darden
Margaret B. Finch-Arietta
Claude M. Garcia
Leroy W. Hansen
Robert L. Holland
Floyd C. Johnston
Gail (Andrews) Landers
Frederick G. Little
Wayne Mallo
Keith D. Machette
Sharon E. Musser
Linda Pearlman Pickel
Kristen J. Price
Martyn L. Quinn
Donald L. Robertson
Carl David Ross
Rayma (Downey) Santos
Edgar C. Sayles, Jr.
James A. Schillo
James M. Shattuck
Sheila J. (Norton)
Winshurst

'82

Mary Mott Broughton
Shelly R. (Havas) Carnaroli
James H. Carroll, Jr.
Edward S. Ciocys
Marietta B. Crosby
Patrick A. Davis
Douglas P. Deschler
Bethany C. Flint-Simmons
Ralph L. Gonzalez

Amy (Hill) Hearth
Michael J. Kinsey
Todd V. Larson
John P. Lowth, III
Sharon J. Lynch
Elizabeth A. (Gavula)
Martin
Jack B. Martin, Jr.
George McLaughlin, Jr.
Melodee E. McThenia
Stephen B. Mead
James R. Mellaci
Nicholas F. Mooney
Donald M. Nairne
Hugh T. O'Hara
Kevin P. Pangburn
Paul C. Petti
David W. Queen
Catharine E. (Purcell)
Reynolds
Joseph F. Rich
John P. Scioscia
Sandra (Malafronte) Snell
Michael S. Southard
James R. Verkler
John F. Walsh
Dina M. Williams

'83

F. Chris Catanach
Sean T. Eaton
Charles A. Friesema
Juan A. Garcia
Anthony V. Greco
Heather (Towle) Hamilton
Mark J. Hamilton
Wernher R. Kuck
Lisa Rosen Lievense
Michael E. Mahoney
Edward R. Martel
Robert J. Muir
Bonnie Schall Murray
Cherlyn Paul
Jo-Ellen Percival
Christine Pizzi Pette
Richard Rateau
Leslie A. Steward
Jeremy S. Tyree
Louise E. (Gilbert) Warner
Geoffrey A. White
Jeffrey L. Williams

'84

Keith R. Anderson
Ellen D. Baker
Marisa A. (Perillo) Bloch
Mollie A. Boettcher
Mark D. Bosses
Kristin Kyle Cox
Pamela J. Davis-Diaz
Keith R. Erickson
Ellen K. Fitzpatrick
Ruby Faye (Williams)
Franklin
Paul M. Githens
John A. Goldstein
Jimmie Edward Jackson
Ludwig J. Mazur
Michael J. Norton

C O N T R I B U T O R S

Christopher M. Pastina
Robert A. Pette
Kenneth E. Rosa
Nicanor S. Santosdedios
Anita K. Scharf
Patrick O. Schneider

'85

Miguel Acosta
Jack A. Arnold
David F. Cannon
Cathleen (Moran) Elisha
Maria B. (Derencin) Gallina
Richard E. Grabowski
Brian L. Groene
Suzanne K. Klepacky
Anne M. Kutchmire
Alexandra McConnell
Jeanne L. McNiff
Carol Moses McTamney
Leroy B. Meyer, Jr.
Mary Elizabeth Morris
Russell J. Munyan, Jr.
Christina P. Petti-Shahum
Ralph Poetsch
Moses J. Sawney
Marcelo J. Sempe
Mary Elizabeth Tounge

'86

Jill (Henry) Aufiero
Lauren L. Becker
Richard A. Case
Kathryn Anne Chambliss
Jay M. Chrobak
Joseph P. Curau, Jr.
Barry W. Curewitz
Melissa (Levin) Curewitz
John T. Duff
Charlene (Gibney) Frazier
Stephen J. Gonyea
Chantelle (Hernandez)
Groene
Gregory F. Guenther

Christopher J. Helbling
John K. Henne
Stephany F. Hooper
Anita Kilbourne Irons
Kenneth M. James
Helen T. Kerr
Daniel R. LeClair
Tasha H. Lohman
Jeffrey Lucas
Shel McGuire
Jeffrey C. Mitchell
Jennifer G. (Faust) Morris
Kathleen M. Murray
Lawrence E. Mulcahy
Barbara Haskins Oberman
Lucile (Lawson) Pignataro
Michael Price
Carolyn B. Rabun
Carl K. Renninger
Tami J. Skifstad
John Council Skinner
Clyde B. Smith, III
Neil Starr
Frank R. Sylvester
Lia Martinez Toledo
Suzanne V. Weston
Edwin F. Wilde
Kimberly (Savoy) Wiley

'87

John M. Barrett
Jerry O. Batley, Jr.
James S. Boris
Elizabeth (Lombardo)
Boudreau
Sharon S. Cross

Ann (Watson) DeBellevue
Kimberly F. DeShong
Kathleen Mary Egan
Christine Bradley Gagnon
William G. Giesecking
Gloria J. Griffith
C. Michael Halfast
Denise Fenimore Halfast
Dan S. Ho
Joseph M. Hyer
Katherine (Hendrix) James
Kimberly A. Kailing-Berry
Andrea L. Katz
Mark F. Lapp
Lerac E. Martinez
David G. Morrow
William M. Mulholland
Joseph T. Potuzak, Jr.
Emily (Gardner) Price
Mary D. Redmond
Lance David Richardson
Joann L. Sirota
Barbara A. Stanton
Leslie Reicin Stein
Paul D. Wilbert
Anita E. Wilder
Joseph P. Wright

'88

Andrew M. Ball
Robert C. Castle
Annie P. Chaniel
Pamela J. Davis-Diaz
Phaedra Bert Fisher
Marybeth M. Guenther

Philippe G. Hills
Rob J. Irons
Craig L. Lowman
David B. McLaughlin
Kristine (Tantsits)
Moscatello
Doyle E. Mullis, III
Lydia S. Ophaug
David A. Robbins
Karen M. (Costa) Russo
Casey J. Schoen
Roccie A. Soscia
Ella Lou Thomas
Daniel Traugott

'89

William K. Askew
Lynn M. Awad
Margaret G. Boris
Brian P. Bowman
Stephen G. Brady
Thomas R. Brown
Robert A. Darr
Jaimi R. Dean
Richard L. Deland
Richard A. Duttonhofer
James T. Greene
Timothy P. Ingram
Therese M. Kominski
Juliet LaDouceur
Richard D. Maun
Donna B. Popovich
Marie Prado
Lorraine K. Rafter
Juan M. Ruiseco

Craig S. Scates
Scott A. Schneider
Jane M. Schroeder
Karen M. Simon
Elliot S. Smerling
Karen Solis
Stephen Stonewell
Shelli D. Taylor
Catherine Hays Wellen

'90

Linda H. Catanach
Michele M. Coneys
Catherine M. Diedrichsen
Jerome T. Flynn, Jr.
Davelis C. Goutoufas
Elizabeth D. Lee
Steven E. Liebel
Susan R. Little
David A. Martin
Donald M. Metzger
Thomas A. Pignataro
Krisitianne Rapp
Mitchell J. Rosensweet
Phillip L. Rosing
Lori Rieth Schneider
Fletcher L. Smiley
Timothy R. Trzcinski
J. Patrick Turtle
Edward D. White, III

'91

Arie Kanofsky
Sandra J. Luihn
Kathy Quesnell
James E. Willman, Jr.

'92

Cynthia M. Amor
Thomas C. Beard
Denise M. Kleinrichert

'93

Todd Augarten

Every attempt has been made to ensure the accuracy and completeness of the lists which appear in this report. However, error is possible and omissions sometimes occur. We apologize for any errors and/or omissions. Please contact the Office of Institutional Advancement at (813) 253-6220 to inform us of any inaccuracies.

COMPANIES THAT PARTICIPATED IN THE MATCHING GIFTS PROGRAM DURING FISCAL YEAR 1990-91

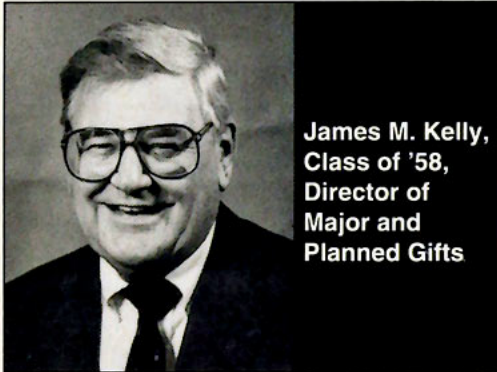
American International Group, Inc.
Anheuser-Busch Companies, Inc.
Arthur Andersen & Co. Foundation
The Ashland Oil Foundation, Inc.
AT&T Foundation
The BOC Group, Inc.
Ball Corporation
Barnett Banks, Inc.
Beech Aircraft Foundation
Bellsouth Corporation
Bristol-Myers Squibb Foundation, Inc.
CIBA-GEIGY Corporation
Campbell Soup Company
Caterpillar Foundation
Champion International Corporation
Chase Manhattan Bank, N.A.

Chrysler Corporation Fund
Connecticut Mutual
Conoco, Inc.
Deloitte & Touche Foundation
Ernst & Young Foundation
General Dynamics Corporation
General Electric Foundation
GTE Foundation
The HCA Foundation
Home Life Insurance Company
Honeywell Foundation
IBM Corporation
Johnson & Johnson
The Mead Corporation Foundation
Merchants Association of Florida, Inc.
Merrill Lynch Pierce Fenner & Smith, Inc.

Metropolitan Life Foundation
NCNB Corporate Charities
Price Waterhouse Foundation
Provident Mutual
The Prudential Foundation
Raytheon Company
New York Life Insurance Company
Shawmut National Corporation
Shearson Lehman Hutton, Inc.
Southern Bell
State Farm Companies Foundation
Sun Refining & Marketing Co.
Time Warner, Inc.
Unisys Corporation
USF&G Insurance
Winn-Dixie Stores Foundation

Charitable Lead and Charitable Remainder Trusts

Tax Avoidance Made Simple



James M. Kelly,
Class of '58,
Director of
Major and
Planned Gifts

Professional periodicals these days are filled with articles on both Charitable Lead and Charitable Remainder Trusts. The professional is referred to countless sections of the tax code, revenue rulings, procedures and the court memos. If a layman was to do independent research on the subject, he/she would become so confused, I doubt if anyone would utilize such trusts.

The use of these trusts is very sophisticated, so I don't mean to down play all the regulations. Let me suggest that you let your attorney, C.P.A. or other tax advisers worry about the regulations. The purpose of this article is to describe to you in broad terms how you might utilize these trusts in your overall estate plans. Be sure, however, to consult with your tax advisers and follow their suggestions.

Dodging the Tax Man

Charitable Lead Trusts usually are established by an individual who wishes to divorce him/herself from taxable income for a specified time. When the time expires, income then flows to the grantor. This type of trust is irrevocable, so great care must be utilized in drafting such a document. Many such trusts terminate when the income period expires.

You may wonder why an individual would utilize such a trust. Imagine, if

you will, a high-salaried, high-asset individual who has supported his college with after-tax dollars. His adviser points out that he can place his assets in trust and have the income go to his school for 10 years. After that time, the trust terminates (presumably when the grantor retires and needs the income), and assets and income are returned to the Grantor.

Because the assets are in a Charitable Lead Trust, no income taxes are paid by the grantor while the school receives the income. Extreme care should be used in entering into this type of agreement because the grantor divorces himself from income for at least a 10-year period. Normally such an agreement names the grantor's bank as trustee. This provides independent investment supervision.

'Til Death Do Us Part

Another tool of estate planning is the opposite of a Charitable Lead Trust. It is called the Charitable Remainder Trust. With this type of trust, the grantor gets all the income for life or a specified period, and after death, the trust terminates and the trustee (usually a bank) turns the assets over to the charity.

The time period could include the lives of the grantor, grantor's spouse and children. Of course, the more lives involved the less the tax deduction. A descriptive use of a Charitable Remainder Trust is as follows:

Mr. and Mrs. Smith are a retired couple who have adequately provided for their children during their lifetime. They wish to provide for their college upon their deaths, and, if possible, increase their income during their lives.

They establish a trust with their assets. This is an irrevocable trust that provides income to Mr. Smith during his lifetime, income then to Mrs. Smith, and upon her

death, the trust terminates and the principal is paid to the school. The Smith's bank is named as trustee. At the time the trust is established, the Grantor is entitled to an income tax deduction. The trustee may sell low income-producing property for higher income-producing assets without problem of a capital gains tax. The Grantor also assures him/herself that the assets will pass on to the school with a minimum delay. In addition, the Grantor gets an estate tax deduction.

There are other bells and whistles that can be added, such as a unitrust and multiple income beneficiaries. A Grantor may also name multiple charities to receive the remainder interest. A unitrust provides a better hedge against inflation.

Explore Your Options

The two trust types discussed thus far were established by Grantors during their lifetime. A Charitable Remainder Trust might also be a Testamentary Trust, that is, created by the property owner's will.

A typical situation might find the Grantor deciding that he wants to control his property during his lifetime, but provide investment services for his widow and be sure that what's left after the widow's death goes to his school or other designated charity.

His will would, therefore, establish the Charitable Remainder Trust providing life income to the widow. Since such a trust is irrevocable, the donor's estate would obtain estate tax deductions.

Please understand, the use of Charitable Lead and Charitable Remainder Trusts is complicated and should not be attempted unless the parties concerned spend time with their attorneys and other advisers. This type of trust just might work for you.

UT

CALENDAR OF EVENTS

Campus-Wide Events...

- Tours of Plant Hall. Meet in Lobby, Tuesdays & Thursdays, 1:30 p.m.
- 10/3 Honors Program film/lecture series: "Hamlet Today" with Tom Stoddard, 8 p.m., Sword & Shield Room, Martinez Sports Center.
- 10/4 NAA Scholarship Night, Tampa Greyhound Track, 6 p.m.
- 10/9 Board of Fellows: Fellows Scholars luncheon, noon to 1 p.m., Trustees Conference Room.
- 10/10 Third Annual Computer EXPO: 9 a.m. to 3 p.m., Ballroom.
- 10/11-13 "Taste of Florida," a three-day culinary celebration in Plant Park, 3 to 9 p.m. Fri.; 11 a.m. to 6 p.m. Sat.; 11 a.m. to 6 p.m. Sun.
- 10/12 Rathole Gang Reunion: 5 p.m. Sword & Shield Room, Martinez Sports Center; dinner: 6 p.m., Dome Theatre, Plant Hall.
- 10/17 Faculty Honors Lecture series: Cutting Edges with Dr. Bill Rhey, "Marketing Behind What was the Iron Curtain," 4 p.m., Trustees Conference Room.
- 10/18 Tampa Alpha Raffle, 7:30 p.m., Ballroom.
- 10/23 Second Annual Scholarship luncheon, noon, Ballroom.
- 10/25-27 Family Weekend.
- 10/25 MBA Alumni Assoc. Golf Tournament.
- 10/29 Faculty Honors Lecture series: Dr. Mary Jane Schenck, "The Politics of Language," 7:30 p.m., Trustees Conference Room.
- 11/1 Minaret Society dinner.
- 11/4-8 "Student Executive for a Day," with reception on 11/5 for participating firms, students, COB faculty and invited guests, 5 to 6:30 p.m., Dome Theatre.
- 11/7 Honors film/faculty lecture series: Dr. Richard Mathews, "Science Fiction and the Future: Cyberpunk," 6 p.m. lecture; 6:40 p.m. supper. Reservations requested. Call 253-3333, Ext. 3321.
- Film: "Blade Runner," 7:30 p.m., Sword & Shield Room, Martinez Sports Center.
- 11/11 College of Liberal Arts & Sciences and Honors Program presents: Distinguished Scholar lecture, "Civility and Difference: Multiculturalism and American Higher Education," by Dr. John Trimbur, 8 p.m., Ballroom.
- 11/13 Graduate and Professional Schools Day, 11 a.m. to 4 p.m., Fletcher Lounge.
- 11/18 Faculty Honors Lecture series with Dr. Joe Decker, "The End of the Cold War," 4 p.m., Trustees Conference Room.
- 11/18 Emerging Leaders Recognition dinner, 6:30 to 8 p.m., Dome Theatre. Call 253-3333, Ext. 3685.
- 11/27-29 Thanksgiving Holiday. Offices closed. No classes.
- 12/9 Faculty Lecture series with Dr. Bob Kerstein, "Public Policy for the Future of Tampa and Hillsborough County," 4 p.m., Trustees Conference Room.
- 12/14-17 Final Exams.
- 12/18 Residence Halls Close.
- 12/24 - President's Leave: All offices closed. No classes.
- 1/1/92

In the Gallery...

Open Tuesday through Friday, 10 a.m. to 4 p.m.; Saturday, 1 to 4 p.m. The Gallery will be closed 12/24 through 1/1/92.

- 10/18-11/15 Denis Gaston, paintings; Dean Warren, sculpture. Reception: 7:30 p.m., 10/18, Scarfone Gallery.
- 11/22-12/20 Cynthia Davis, photography. Reception: 7 to 9 p.m., 11/22, Scarfone Gallery.

Musical Notes...

- 10/2 Camerata Strings, 8 p.m., Ballroom.
- 10/12 Pre-College music recital, 2 p.m., Ballroom.
- 10/20 King of Instruments: organ, brass and choir, 4 p.m., Sacred Heart Church.
- 10/21 Spectrum, a contemporary chamber-music ensemble, 8 p.m., Ballroom.
- 10/23 Kevin Fuller, bassoonist, 8 p.m., Ballroom.
- 10/30 UT student recital, 3 p.m., Ballroom.
- 11/10 Pre-college music recital, 2 p.m., Ballroom.
- 11/20 UT student recital, 3 p.m., Ballroom.
- 11/22 Kurt Knecht, pianist, junior recital, 8 p.m., Ballroom.
- 11/23 Jazz Ensemble, 8 p.m., Falk Theatre.
- 11/24 King of Instruments: David Matthews organist, 4 p.m., Sacred Heart Church.
- 12/1 Family Christmas Festival with the Collegiate Chorale and Mostly Pops Orchestra, 4 p.m., Sacred Heart Church.
- 12/2 Wendy Okamoto, flutist, senior recital, 8 p.m. Ballroom.
- 12/6 University of Tampa Symphonic Band, 8 p.m., Falk Theatre.
- 12/8 King of Instruments, organ and strings, 4 p.m., Sacred Heart Church.
- 12/15 Pre-college music recital, 2 p.m., Ballroom.

Henry B. Plant Museum...

Open Tuesday through Saturday, 10 a.m. to 4 p.m. Suggested donation: \$2/adults; 50 cents/children. The Museum will be closed 12/24 through 1/1/92.

Exhibit through Nov. 2: Steamships & Railroads, photos, prints and cases with railroad and steamship memorabilia.

- 10/5 Antiques appraisal session (\$5/item), 10:30 a.m.
- 11/2 Antiques appraisal session (\$5/item), 10:30 a.m.
- 11/9-1/92 Winslow Home prints of children's games, children's toys in cases; family preview opening with hands-on activities.
- 12/1-21 Victorian Christmas Stroll: "A Grand Hotel Celebrates the Season," 1 to 9 p.m.

Spartan Sports Scene...

The following schedules are for home games only. For more information, call the UT Athletic Office at (813) 253-6240.

*Sunshine State Conference games.

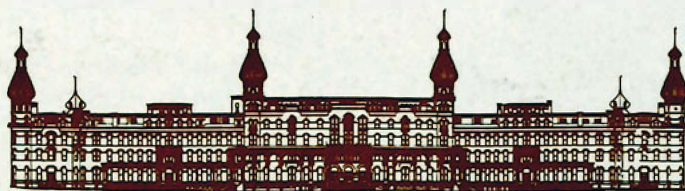
Soccer: Games played at Pepin Rood Stadium, 7:30 p.m. 10/2, *St. Leo; 10/8 Florida Atlantic; 10/23, South Florida (Mayor's Cup).

Volleyball: Games played at Martinez Sports Center, 7:30 p.m. 10/1 *Florida Southern; 10/8 *Florida Tech; 10/15 *Rollins; 10/17, Gannon University; 10/18 "Tampa Classic," St. Joseph's, 5 p.m.; Indiana-Purdue; 10/19 Ashland, 1:30 p.m.; 10/19 Metro State; 10/29 Central Florida; 11/7 *St. Leo, 11/9 *Barry, 11/21 *Florida Tech (senior night); 11/29-30 NCAA Regionals, TBA.



The University Of

T A M P A



Office of Public Information • (813) 253-6232

401 W. Kennedy Blvd. • Tampa, FL 33606-1490