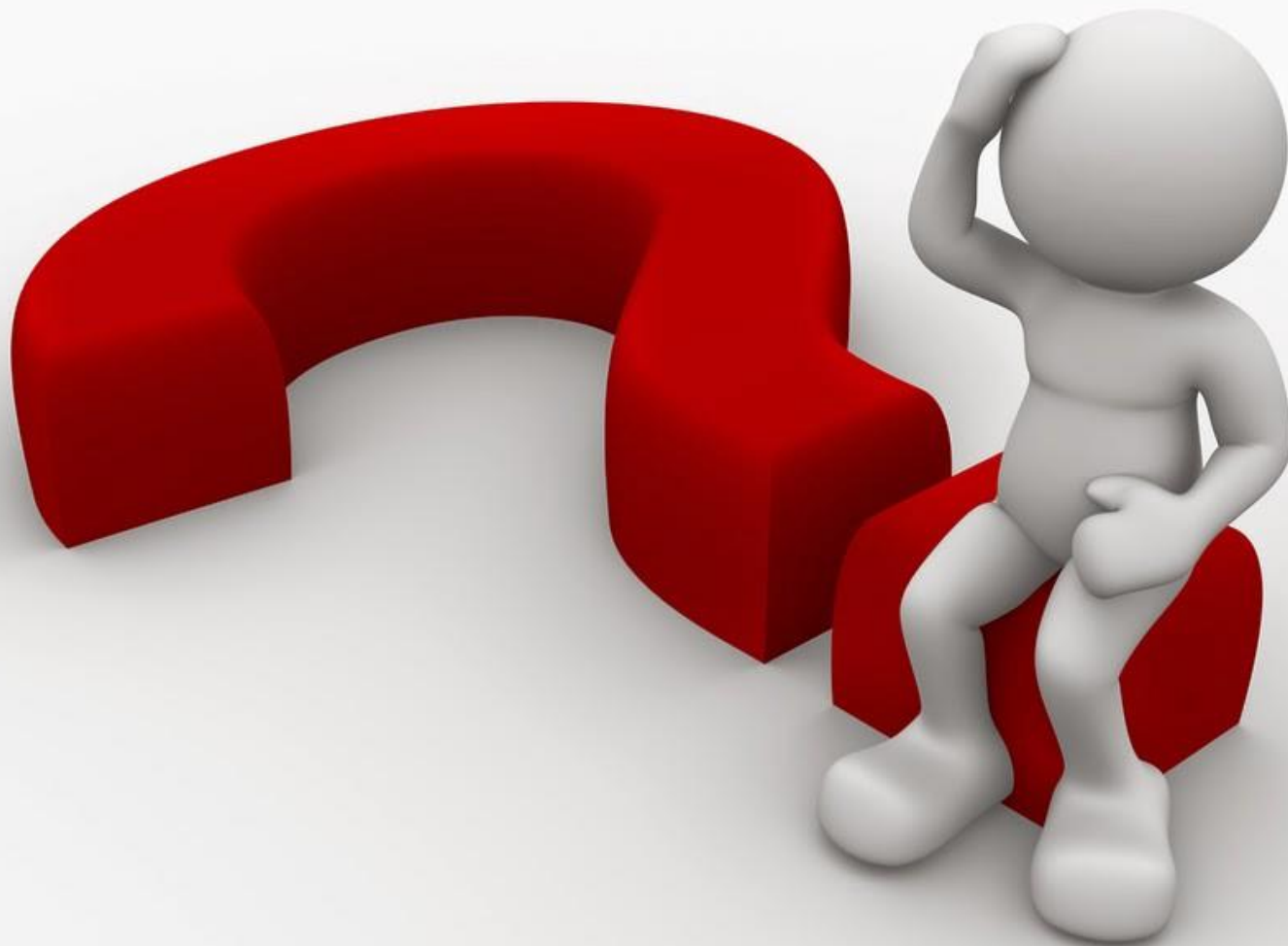


# *Chateau Cat*

By: Kylie Lowell





# Current State





- Takes up valuable space
- Does not match the decor

There must be a better way to integrate cat products  
into the design of the space!

# What I learned from my research...



- Still takes up space
- Limited Selection



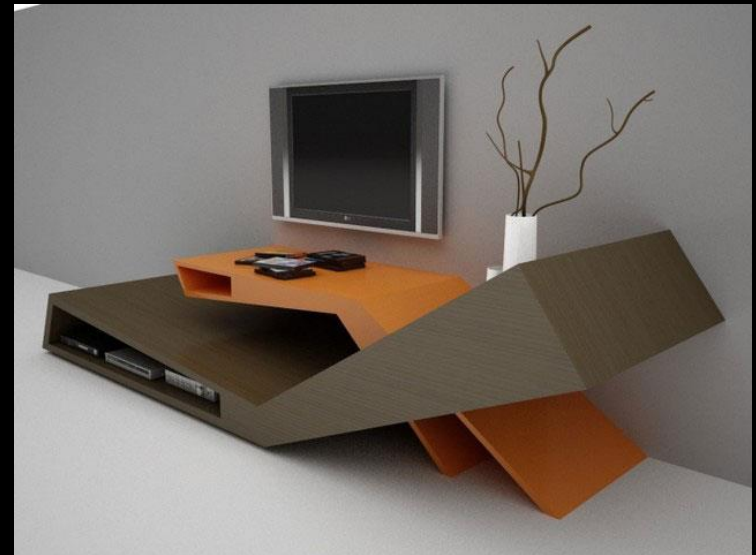
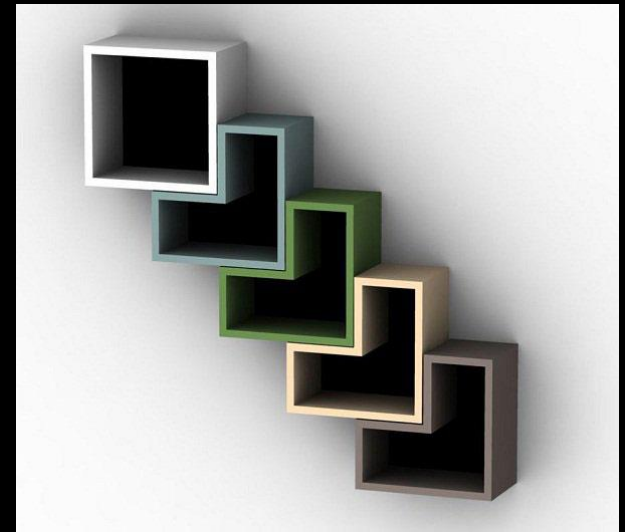


*Chateau Cat*

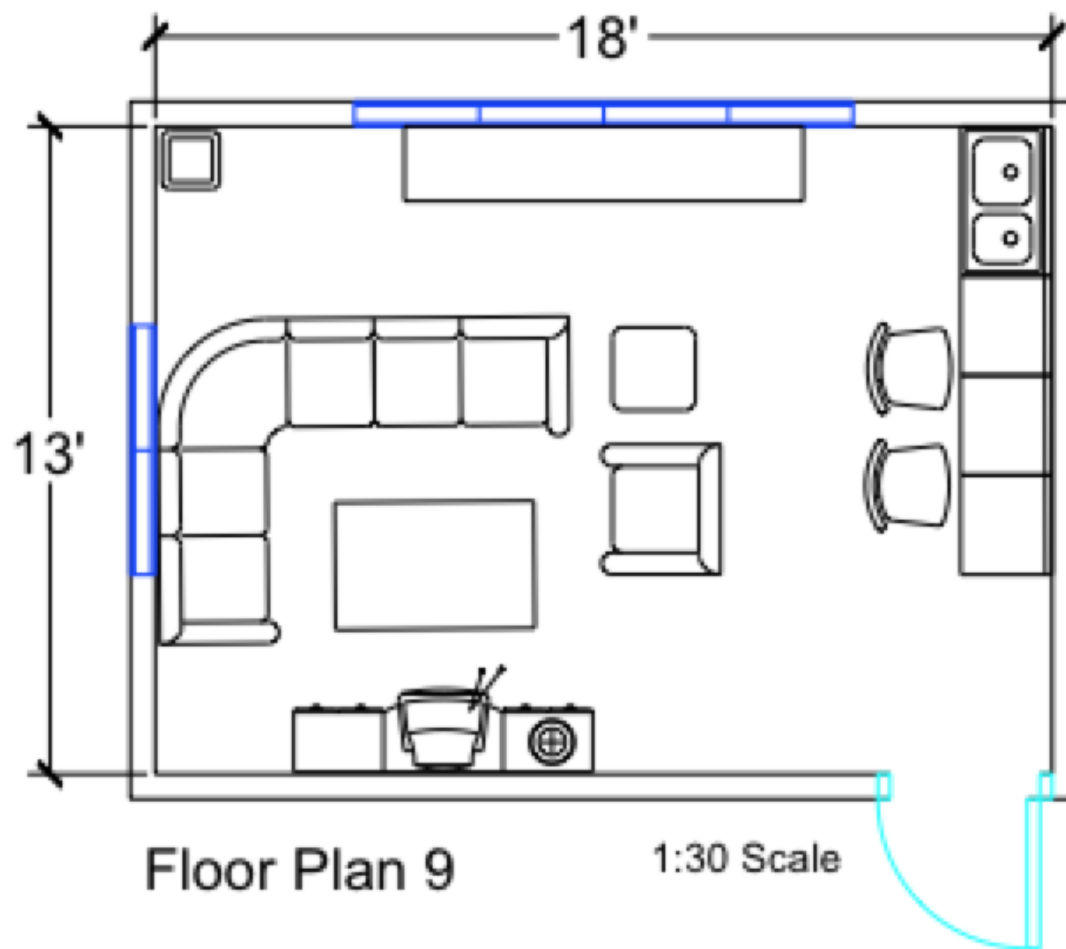
# Client Interview

- Size of space
- Number of cats in the space
- Client's preferred style
- Other needs

# Findings from modern furniture research



# Final Floor Plan



## Other Necessities:

- Elegance
- Durability
- Functionality

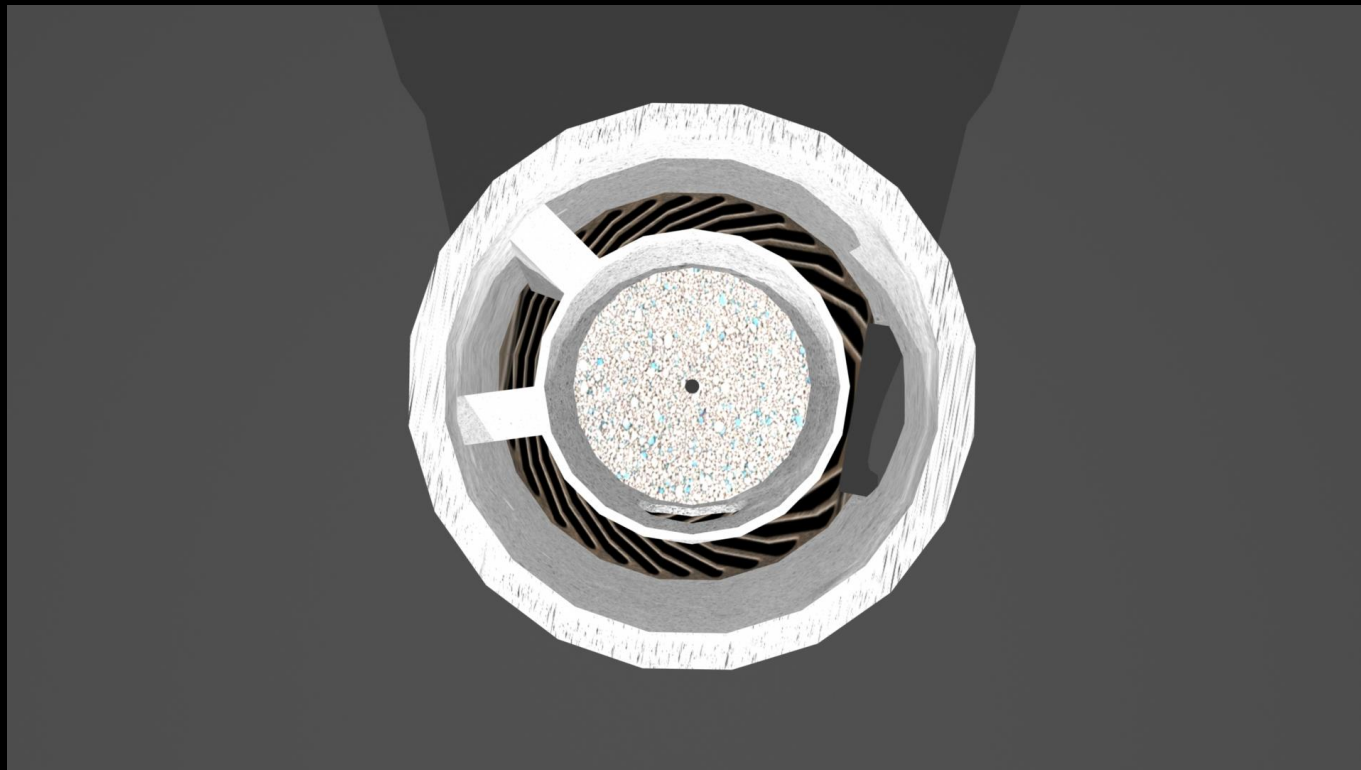
# Completed Model in Maya



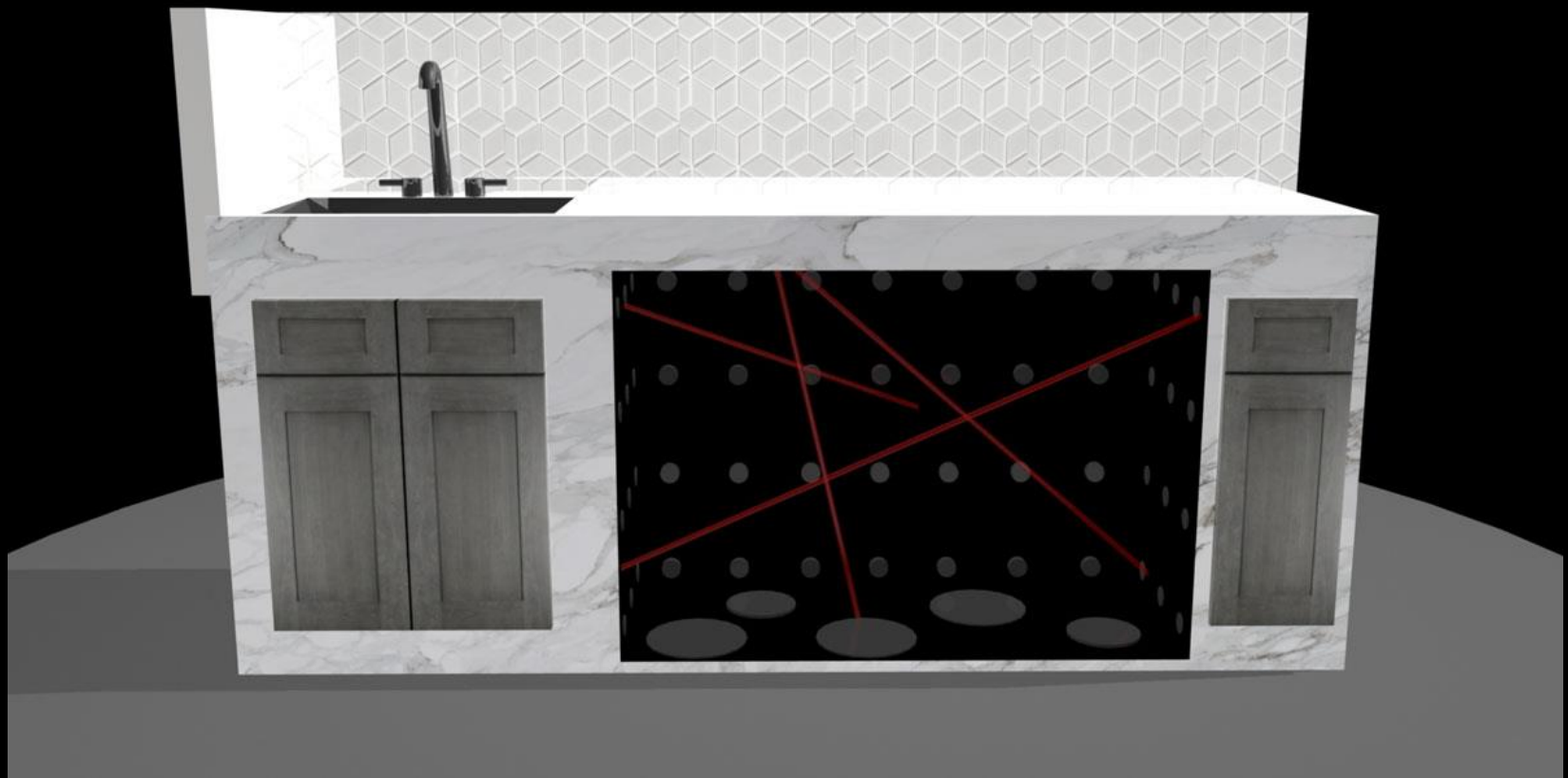
# The Curious Cat Side Table



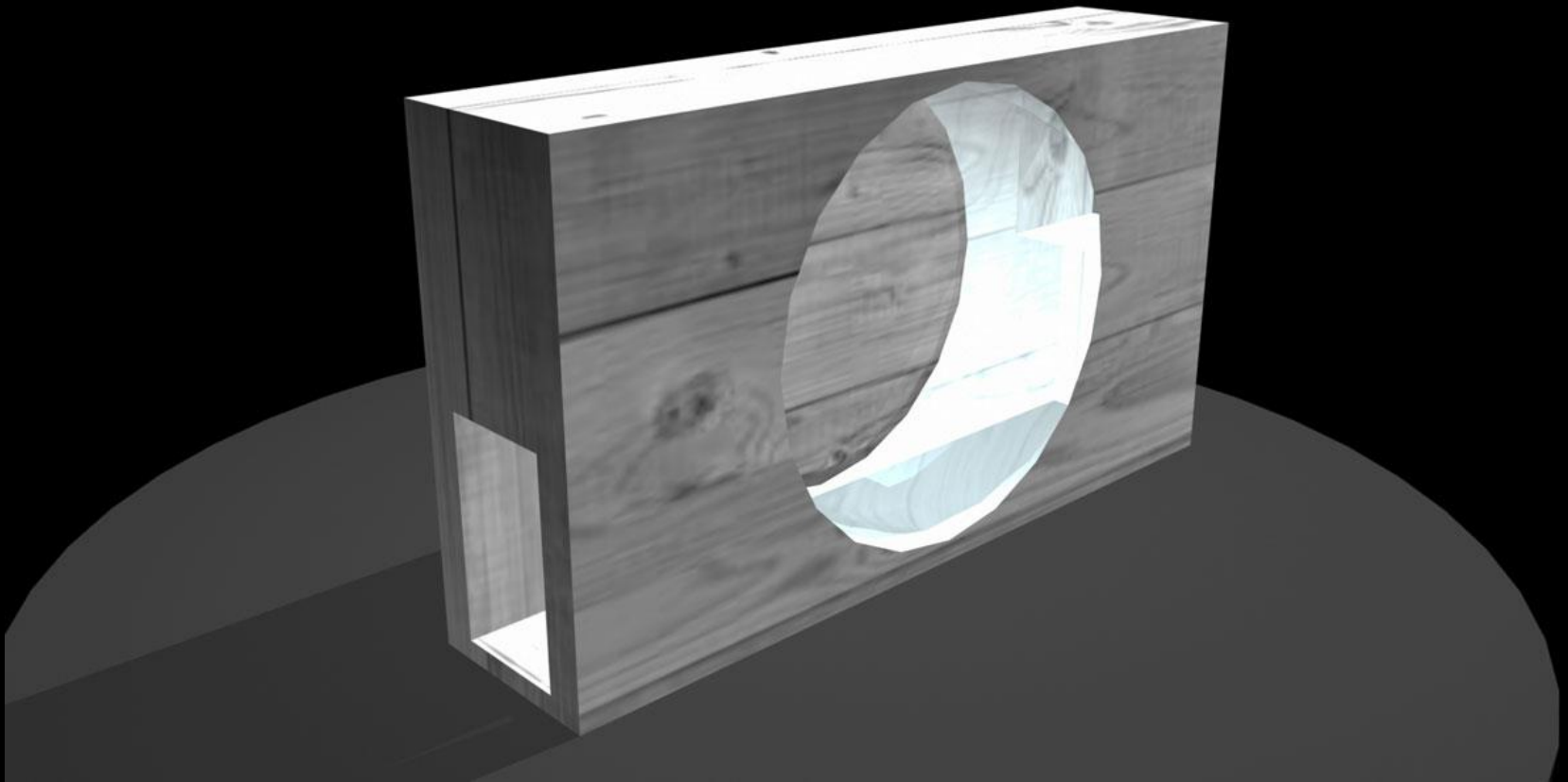
# Clean Cat Litter Box



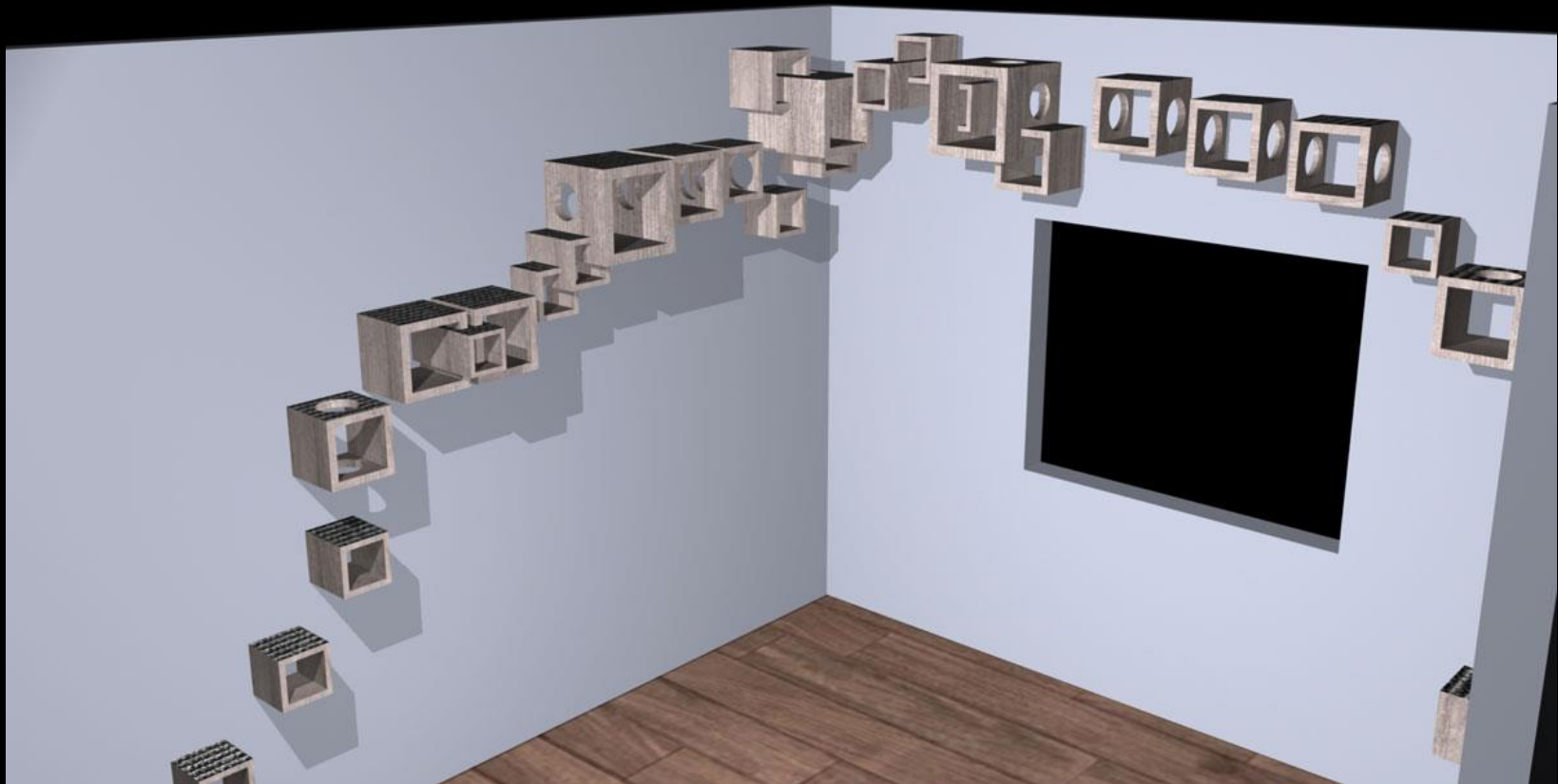
# Cavern Cat Bar



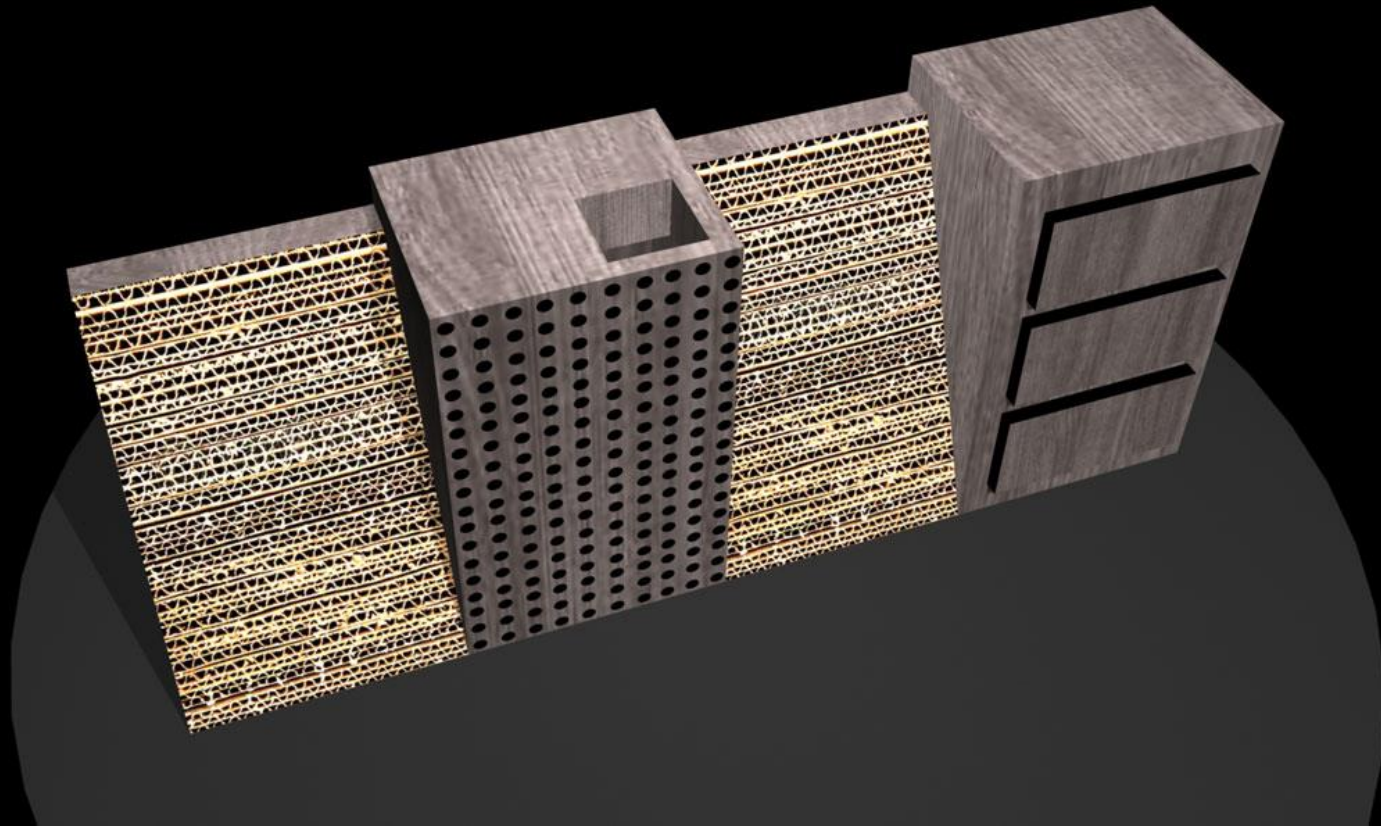
# Cardio Cat Wheel



# Climbing Cat Wall Decor



# Captivated Cat Console



## Software Used to Create the Project

- Autodesk AutoCad
- Adobe Illustrator
- Adobe Photoshop
- Autodesk Maya

# Thank You

