

## Administration Set To Help Freshmen

During your first week at the University you will undoubtedly have many questions you'll want answered. Here are some names and faces you should get acquainted with. They will help you whenever they can.

**DR. DAVID M. DELO**  
Dr. Delo is the president of the University of Tampa. His duties are numerous and he is a busy man; however, if you ever need him for some academic or personal problem, he will be glad to be of help to you. He takes a deep interest in each and every University of Tampa student.

**MRS. DAVID M. DELO**  
We are all proud of our first lady. When you arrive at school you will want to take note of our beautiful landscape and lavish ballroom. These additions to our university came from interested Tampa citizens through drives spearheaded by Mrs. Delo. Upon arrival, you will want to become acquainted with Mrs. Delo. She also will assist you whenever possible.

**DR. M. C. RHODES**  
Dean Rhodes is our Dean of Administration. His office staff will help and counsel you as you plan your academic program. Do not take advice from fellow students when it comes to your academic requirements. Whenever you're in doubt, ask Dean Rhodes. You will find him courteous and helpful.

**MRS. LUCILLE KING**  
The office of the Dean of Women will be very helpful to all our women students. If you're ever in doubt as to where to go, Dean King will be of great assistance to you. If you have a personal problem, share it with Dean King; she will do her best to work it out for you. Her warm smile and her office will be a source of her sincerity in assisting you.

**MR. W. H. HAYES, JR.**  
Dean Walter Hayes will at all times assist our male students with their questions. He is a top counselor and you will want to share your problems with him. His friendly nature and warm personality are indeed a wonderful addition to our campus.

**JOHN W. HANNA, JR.**  
John is president of the University of Tampa Student Congress. You can usually find him in the Student Congress office on the second floor. If you have questions about University policies affecting you, John will be glad to answer them.

**DR. WILLIS J. DUNN**  
Dr. Dunn is the University

of Tampa registrar. If at any time you have a question about admission or your grades, his office will be glad to accommodate you.

**DR. JAMES W. COVINGTON**  
For those entering as evening students, the Evening Division Office will be the place to go for most of your questions.

**MRS. ELRITA CRAWFORD**  
Mrs. Crawford is Coordinator of Campus Activities. Her office is located in the Rawlings Room on the first floor of the main building. She will be able to answer most of your inquiries about school activities.

If you should find that the person you wish to see is not available, many times their secretaries will be of great assistance to you. Get acquainted with them: Mrs. Edgar Block and Mrs. Rowland Pittman, in Dr. Delo's office, Miss Evelyn G. Bennett, secretary to the Dean of Men, and Mrs. C. M. Cooper, secretary to the Dean of Women.

If there is any question about your luggage or necessities for your room, you will contact Mr. Rufus Whitis, the Building Superintendent. His office is on the first floor of the main building, near the elevator.

There will be an information booth in the lobby during registration. You will want to use it during that time.

"Minaret" staff members will be always glad to assist you at any time. You will find them in the "Minaret" office on the second floor, next to the Student Congress office.

## Tour Scheduled For Students

All students who are new to Tampa this year will be taken on a tour of the points of interest in the community, as a part of the Orientation Week schedule.

Students will meet in the lounge of their residence hall, Wednesday, September 20, at 1 p.m. and will proceed to the main lobby of the Administration Building. Cars will leave from the front or East entrance at 1:30.

Residential areas of Tampa, as well as business and industry will be visited. The Latin Quarter in Ybor City and Davis Islands will be included. This is your opportunity to get an early impression of a cross-section of the city in which you will live for the next several months.



## ★ AN INVITATION TO LEARNING ★

From the President

## Welcome to the University of Tampa

A cordial greeting to all freshmen and new students from the President's office! You will find that students, faculty and administrators alike will welcome you cordially and be as helpful as possible to assist you in becoming accustomed to your new environment.

You will find at the University of Tampa a friendly and vigorous atmosphere and a progressive attitude. Here is a college in transition. Great physical and other changes are anticipated. This summer we purchased a new excellent dormitory for women. Construction should start this fall on new dormitory wings which will house 165 additional students. A campaign to secure the needed finances for a greatly desired student center building has begun. A mathematics laboratory was installed last year; a new language laboratory will be ready for the opening of school. New equipment has been purchased for dormitories and the departments of music and art.

Thus you will be part of a college which is on the move in terms of the character of its student body, the quality of its academic program, and the scope of its activities.

I am confident that you will take full advantage of the opportunities you are offered and do your full share as college citizens to assist in creating the kind of atmosphere which will allow you to gain the most from your years at the University of Tampa.

David M. Delo, President

## Orientation Week Includes Numerous Student Activities

Nine hundred and fifty new students will begin arriving at the University of Tampa today for a week of orientation and registration activities preceding fall semester classes starting September 25.

They will be introduced to various phases of academic and extra-curricular life at the University through student convocations and social gatherings. A tour of the city is planned for the out-of-town students. Residence halls will be opened to the new students today at Kay Hall Saturday night. Religious organizations on campus will hold open house at their various meeting rooms Sunday afternoon and night. Sunday also is the day that Eastern Air Line's annual "Spartan Special" jet flight from New York will arrive at Tampa International Airport.

### ORIENTATION WEEK SCHEDULE

|           |          |   |
|-----------|----------|---|
| Friday,   | Sept. 15 | 9:00 a.m. to 4:00 p.m. — Faculty Workshop.              |
|           |          | 9:00 a.m. — Opening of Residence Halls to new students. |
| Saturday, | Sept. 16 | 10:00 a.m. — Student Leaders' Workshop — Ballroom.      |
|           |          | 8:00 p.m. Free Movie — McKay Hall Lounge                |
| Sunday,   | Sept. 17 | Afternoon — Church Group Meetings                       |

ALL INCOMING STUDENTS — See Advisor Mon. - Tues. or Wed. between 10:00 a.m. and 4:00 p.m.

|            |          |  |
|------------|----------|--|
| Monday,    | Sept. 18 | 9:00 a.m. to 10:00 a.m. Faculty and Freshman Convocation.  |
|            |          | 10:00 a.m. to 12:00 noon — Math and English Placement Tests.   |
|            |          | 1:00 p.m. to 5:00 p.m. — Freshman ACE, Iowa Reading, Psychological, and other tests.                           |
|            |          | 6:00 p.m. to 10:00 p.m. — Placement Tests, Evening Division Freshmen.  |
| Tuesday,   | Sept. 19 | 9:30 a.m. — Convocation, Freshmen & Student Congress.  |
|            |          | 10:30 a.m. — Convocation, Women — in the Ballroom.   |
|            |          | 11:30 a.m. — Convocation, Men — in the Ballroom.   |
|            |          | 3:00 p.m. — President's Reception for Entering Students.   |
| Wednesday, | Sept. 20 | 9:00 a.m. to 12:00 Noon and 1 to 3 p.m. — Library Orientation.   |
|            |          | 8:00 p.m. — Campus Sing (Cheerleaders, Student Leaders, etc.)  |
| Thursday,  | Sept. 21 | Noon to 8:00 p.m. — Registration of freshmen and Evening Division.   |
| Friday,    | Sept. 22 | Noon to 8:00 p.m. — Registration of transfer students; also sophomores, 2nd semester freshmen and Evening Div. |
|            |          | 8:00 p.m. — "Night in Madrid" — entertainment and street dance sponsored by Student Congress.                  |
| Saturday,  | Sept. 23 | 8:00 a.m. to 12:00 Noon — Registration general.  |
|            |          | Evening — Football game, followed by Delta Zeta Sorority script dance.   |
| Sunday,    | Sept. 24 | 8:00 p.m. — Religious Organizations Meeting.   |

9 a.m. Faculty members of the university will attend a day-long workshop at the Non-Commissioned Officers' Club, MacDill Air Force Base, to discuss planning for the academic year. yofhents niversit lenU.

**Orientation Workshop**  
Saturday student leaders of the university will hold a workshop on campus to make final plans for orientation activities. A free movie for students will be held in the lounge of McKay Hall Saturday night.

where a large group of former students will be on hand at 4:30 p.m. to welcome an estimated 150 new students. A faculty and freshman convocation is scheduled for 9 a.m. Sept. 18. Three convocations for new students are planned for Tuesday morning.

Entering students will be honored Tuesday afternoon at a reception in the lounge of McKay Hall which university faculty members will attend.

## Fla. Climate - TU Activities Determine Campus Fashions



For classwear, informal sportswear is popular among T.U. students.



Bermuda shorts are favorites for after-class activities.



January, February and March call for heavy coats and woollens even in Florida.



Formals and dinner jackets are "musts" for many Tampa U. functions.





# EDITORIALS

## To Freshmen, A Hearty Welcome

As Editor-in-Chief of the Minaret, I would like to welcome you to the University of Tampa. May your days here be a pleasant as we have found ours in the past.



Gonzalez

The Minaret is the University's newspaper, published bi-monthly by students, under the supervision of the Publications Committee.

Students interested in journalism, either as a career or as an educational experience, serve as members of the staff. Membership — not only editorial

but advertising and business administration — is open to all interested students and promotions within the staff are on a competitive basis.

During Orientation Week, you will note that a Publications Seminar will be held. We hope that you will take the opportunity to acquaint yourselves more thoroughly with the University publications and perhaps apply for staff membership.

We are looking forward to meeting you and extend a hope that some of you will be working with us shortly — serving the student body of the University of Tampa.

The Editor

On behalf of your Student Congress and myself — "Welcome to the University of Tampa." Your life here should prove to be exciting and educational.



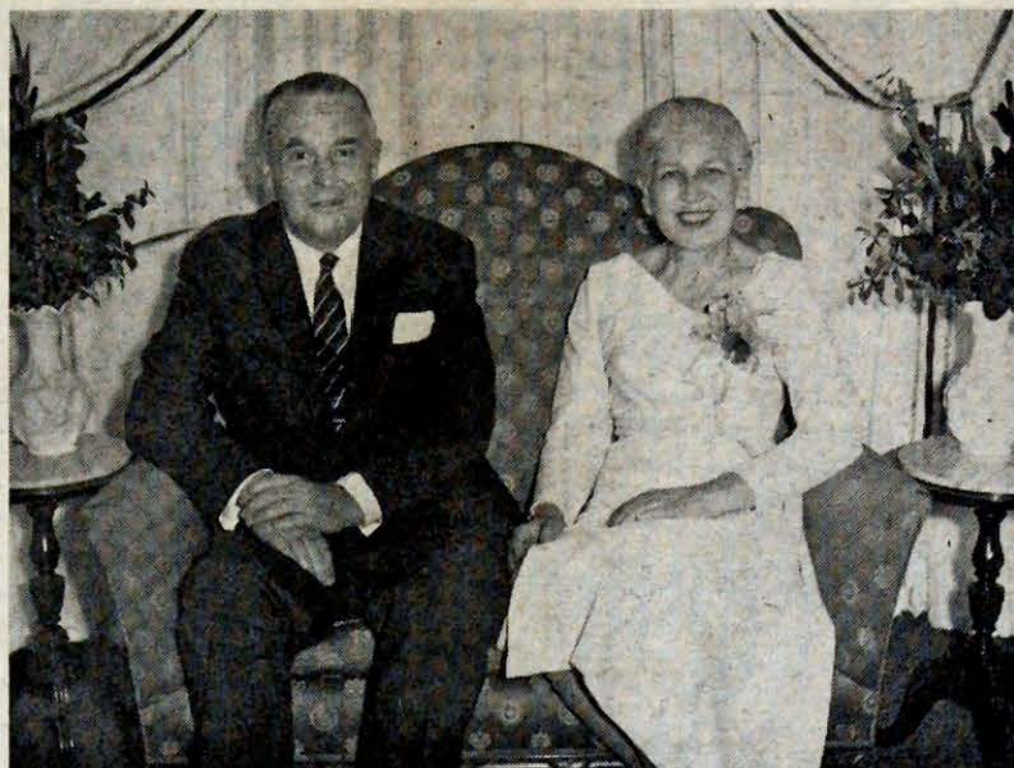
Hanna

For many years the University of Tampa has offered a challenge in achieving academic excellence. Although this is the primary goal of the University program, it does not curtail the import-

ance of other activities that assist in the full mental and physical growth of the student. I would like to join the administration and faculty in encouraging you to take an active part in the campus life at the University.

The coming academic year of 1961-62 will be a banner one for all at the University of Tampa, I am sure, but we must all take an active part.

John Hanna  
President Student Body



University of Tampa President and First Lady, Dr. and Mrs. David M. Delo.

## University of Tampa Building Has Colorful, Historical Background

"Only God knows why Plant built a hotel here, but thank God he did," said an American cavalry general of the Spanish-American War. He was speaking of what you now know as the University of Tampa building and of the dynamic personality, Henry H. Plant, who built it.

Henry B. Plant of Connecticut settled in Georgia in 1854. Soon afterward he organized the Southern Express Corporation. During the depression of 1873-79, Mr. Plant began to buy bankrupt railroads in the southeastern part of the United States. He brought Savannah, Jacksonville and Tampa into continuous communication, and by 1884 Tampa had regular train service with Jacksonville, thus being linked with the rest of the country.

Tampa at that time was a community of 700 in a "sea of sand" with "wooden derelict buildings." Mr. Plant's most colorful venture was to build the Tampa Bay Hotel, now home of our University.

The cornerstone was laid in 1888 and the formal opening was in February, 1891. This was a great event for Tampa.

Elaborate festivities including a grand reception and a ball marked the opening.

The first season was a big success. When a naval squadron came to Tampa, Mr. and Mrs. Plant entertained Admiral Walker with appropriate ceremony. Four years later Mrs. U. S. Grant was an honored guest. Another cause for elaborate celebration was the opening of the Lafayette Street Bridge.

Gay and fashionable tourists thronged this ornate and gorgeously furnished hotel, though some of Mr. Plant's critics described it as a bizarre affair, covered with gingerbread decoration. Railroad and steamship connections and a good hotel helped Tampa to grow from 700 people to 10,000 in five years.

At the beginning of the Spanish-American War, Tampa had the best port (owned by Mr. Plant's company) for operations in Cuba. Soldiers of the regular army began to pour into Tampa by the thousands. During the war the Tampa Bay Hotel was linked to a Brussels hotel just before the battle of Waterloo. Famous newspaper correspondents including such great names as Richard Harding Davis, Fred-

eric Remington and Stephen Bonsal stayed here. Theodore Roosevelt had his camp one mile from the Tampa Bay Hotel. Mrs. Roosevelt stayed here when she visited him. Porches and corridors were filled with officers of the Army and Navy.

The City of Tampa bought the hotel in 1905 and operated it for a number of years. Later the hotel closed, and in 1933 the building was reopened as the newly organized University of Tampa.

When you pass through the halls of Tampa U., walk proudly, for you are walking on historic grounds. These same halls have echoed with the footsteps of the lighthearted and frivolous, sounded with the tread of the rich and the mighty. They have thundered with the footsteps of soldiers. Great personages have passed through the rotunda. Great names in history, memories now.

But in our American way of life where success grows effort — who knows, perhaps even greater personages may evolve from the group that passed this very morning. They may find fame and accomplishments that will further enrich our country's history — and the history of this building.

## Welcome Freshmen

### Dean of Women

Greetings! My sincere welcome to each of you. We feel you have made a wise choice in the selection of your university.

We hope that you will enter Orientation Week with great enthusiasm. We have planned some special events for your entertainment. We hope you will make many friends during these various special events.

At the all women's convocation, we will discuss rules and regulations pertaining to campus behavior and dress, study habits, and other phases that make up the well-rounded college life.

We know you will love your new Women's Dormitory with its wall to wall carpeting in hallways, rooms and suites; air-conditioning in every room and suite; and with a dining hall in the building.

The football game on Saturday night, followed by the script dance by the Delta Zeta National Sorority will be a fitting climax to your first week on campus.

My best wishes to you for a happy year at the University of Tampa, and welcome to our great and wonderful University.

### From the First Lady

To members of the class of 1965 and every newcomer to the University of Tampa:

I look forward to a year of getting to know you, of attending your special functions, of entertaining you in the President's Home, of working with you.

I look forward to your enthusiasm, the new ideas which you will bring from all parts of the country and from all corners of the globe, your creative endeavors, your cooperation.

For each of you will have much to share with those of us already here. Be generous and in the sharing you will reap.

Mrs. David M. Delo

### Dean of Men

To all new students arriving at the University of Tampa for the academic year of 1961-62: WELCOME!

I, too, am new to this campus. However, already I have had an opportunity to observe, firsthand, the many facilities that the University has to offer. Let's use these facilities! Let's become a part of this academic community, the University of Tampa; participate in the classroom activities; join some of the many student organizations on the campus; enjoy the social and cultural activities of the University, its clubs and organizations, and its fraternities and sororities.

Many of you are new to a university campus; some of you are new to this campus. But all of you have new experiences before you. The benefits you gain during your stay at the University of Tampa will be in proportion to your efforts. I sincerely hope that you are entering this academic year with us with a determination to reap an abundant harvest of the benefits waiting for you and your efforts. I assure you, men of this student body, that my staff and I will cooperate with you in your endeavors to advance yourself.

I welcome you all and we look forward to knowing you well during this promising year of 1961-62 at the University of Tampa.

### A Message To Parents

The best suggestion we may offer you is, "Save money on long distance calls, send cookies instead." Letters are always welcome. You may not get much response at first because everything will be strange and new to the freshmen. The letters will be more like epistles — just grit your teeth and try to stand it. Homesickness hits campuses like an old-fashioned epidemic. As soon as everyone gets in the "swing" of college it goes away.

Your freshman will be doing exciting things. The classes he attends, the people he meets, the clubs he joins, all combine to produce a well rounded person. Why don't you sit back and enjoy his college career?

We hope that you will be able to visit our campus soon. We are proud of this University. We are proud of its unusual architecture, its outstanding faculty, and its standards of education. We know that you and your freshman will enjoy this year and the years to come at the University of Tampa.

### Next Issue

Minaret

October 6

### FILM CLASSICS LEAGUE

#### University of Tampa

October 13 — Me and the Colonel

November 3 — Hamlet

November 17 — The Roots

December 1 — The Spectre of the Rose

January 19 — The Cupboard Was Bare

February 2 — Father Panchali

March 9 — La Traviata

April 13 — The Happy Time

—Plus bonus film — to be announced later—

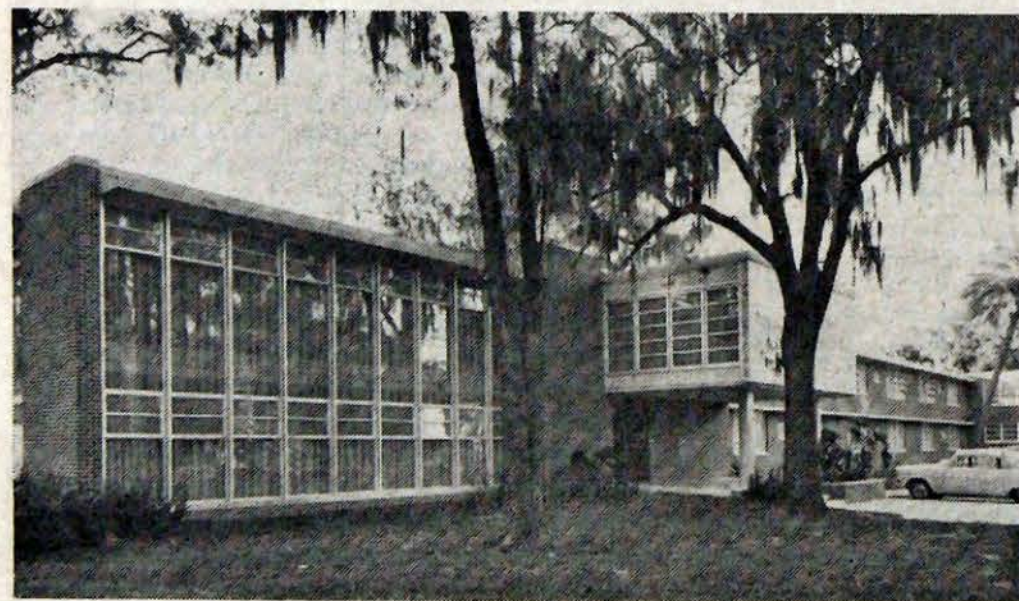
Student Membership ----- \$3.00

Regular Membership ----- \$4.00



MINARET STAFF MEMBERS. Al Frankel, Associate Editor and Norma Blancato, Business Manager work on the pre-registration issue.

## "THE NEW LOOK" - UNIVERSITY OF TAMPA



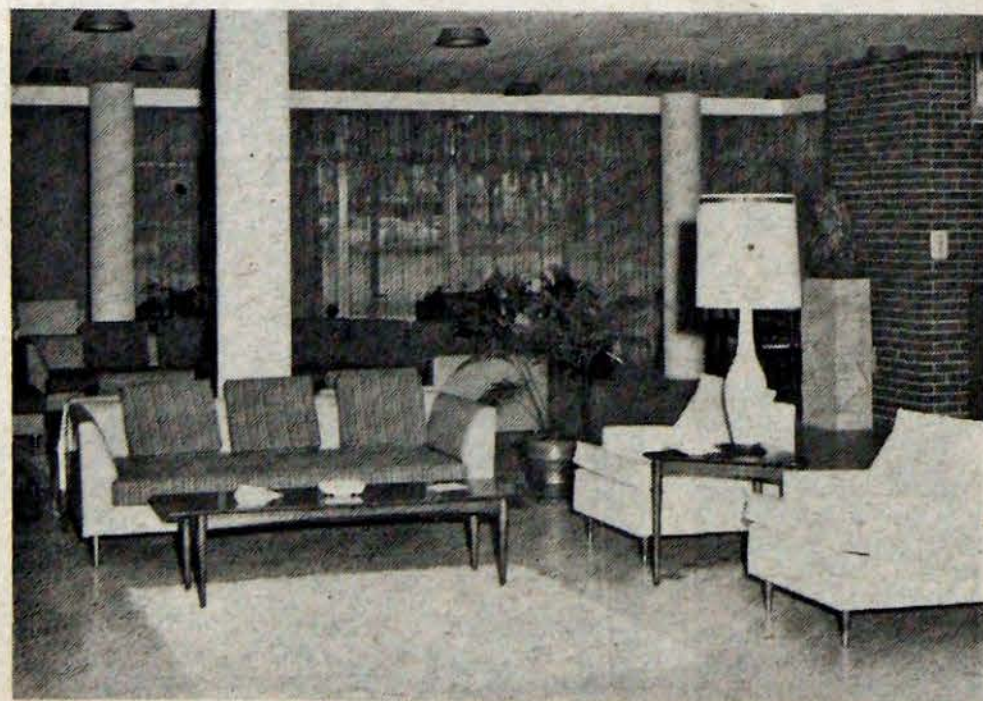
Smiley Hall, completed in 1959, will house approximately 55 men. This completely air-conditioned dormitory is adjacent to the main building.



Above is the sketch of the air-conditioned, river front student center which will be constructed in 1962.



McKay Hall, a modern brick air-conditioned dormitory for men, faces the river near the main building. This dormitory was completed in 1959.



Residents of Crescent Hall will find the furnishings of this lounge on the first floor modern and comfortable.



## Campus Organizations

by NORA PALLEIRO

Campus Organizations Editor

The University of Tampa recognizes that important educational values are gained through participation in student activities. Students are encouraged to join and become active in one or more of the many organizations approved by and operating under the supervision of the University. This is intended to give the new students a brief description of some of the organizations now active at the University of Tampa.

### Honorary Organizations

1. Phi Society — Students who appear on the Dean's List for academic excellence for both semesters of their freshman year may be eligible for Phi Society if the major portions of credits has been in Liberal Arts courses. Phi Society, installed at the University of Tampa in 1940, is a direct offspring of Phi Beta Kappa, oldest and most distinguished of American honorary fraternities. The organization is administered by faculty members who belong to Phi Beta Kappa. The insignia is a gold key in the form of the Greek letter Phi — for Philosophy or learning in its broadest sense.

2. Alpha Psi Omega, Alpha Kappa chapter — National dramatic fraternity. It is the largest college organization in the world with more than 300 chapters. Membership is based on proved ability in dramatics and stagecraft.

3. Kappa Pi, Alpha Alpha Theta chapter — National art fraternity. Installed at the University of Tampa in 1948. Includes finest artists in the University. Second-year art majors in good standing are eligible for membership.

4. Kappa Kappa Psi — National affiliated honorary band fraternity. Membership is based on musical ability, scholarship and participation in the University of Tampa band.

5. Pi Delta Epsilon — In 1954 the University journalism fraternity was first organized and

installed as a chapter of Pi Delta Epsilon, national honorary collegiate journalism fraternity. Membership is open to men and women students who are qualified in the study and pursuit of journalism.

6. Sigma Alpha Iota, Beta Sigma chapter — National honorary music fraternity for women who have elected a major or minor in music. Membership is based on musical ability, scholarship and activity in music.

7. Sigma Tau Delta, Rho Zeta chapter — National professional English honorary fraternity. Its purposes are to encourage the study of English literature and to foster writing of high literary quality. The chapter at the University of Tampa publishes the literary journal, De Novo.

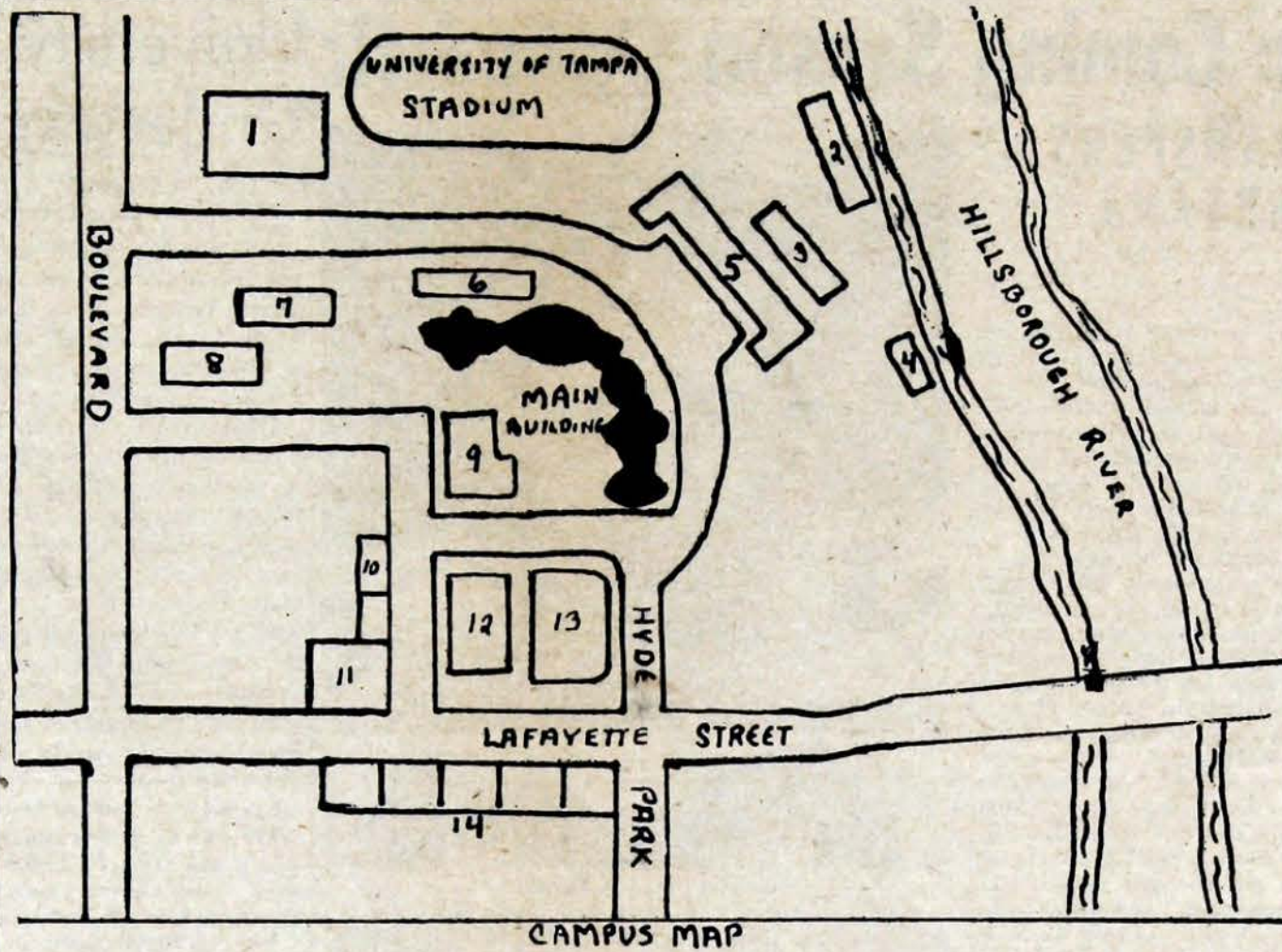
### Church Related Organizations

1. Baptist Student Union — A link between the campus and the Baptist churches, the BSU aims to create and maintain a church consciousness among students and to encourage them to take active parts in all church organizations. Holds regular meetings on campus and sponsors social and recreational events.

2. Newman Club — A club of Catholic culture and fellowship that fosters the spiritual, intellectual and social activities of Catholic students. Principal purpose is to weld Catholic students into a common union. Assists the University and all students whenever possible. Meets weekly during the entire academic year. Open to all students of the Catholic faith.

3. Westminster Fellowship — Strengthens, correlates and unifies all Presbyterian activities into one all inclusive program of religious activity. Enlists students in activities essential for Christian development and spiritual growth.

4. Canterbury Club — Aims to serve the mission of Chris-



CAMPUS MAP

1. GEORGE B. HOWELL GYM
2. FINE ARTS BUILDING
3. INDUSTRIAL ARTS BUILDING
4. BOATHOUSE AND DOCK
5. McKAY HALL
6. MUNICIPAL AUDITORIUM
7. MUSIC BUILDING
8. BASKETBALL COURT
9. STUDENT PARKING
10. SIGMA PHI EPSILON HOUSE
11. CRESCENT HALL
12. TENNIS COURTS
13. STUDENT PARKING
14. COMMERCIAL AREA

## Pi Kaps Purchase New Fraternity House, Will Add Recreation Room

Brothers of Pi Kappa Phi Fraternity will move into their newly purchased fraternity house this semester. The three-story building is located at 304 Plant St.

Mrs. Hanley, former dorm counselor of Smiley Hall will serve the Pi Kaps as house mother and will occupy an apartment on the first floor.

The house has a living room, dining room, kitchen, and chapter room which will be used for fraternity meetings. A library, located on the third floor, will be fully equipped and available to pledge trainees during certain hours.

Arrangements have been made concerning eating facilities. After Christmas, the brothers plan to employ a full-time cook and servant. Under this arrangement, two meals will be served daily. Maid service will be available as soon as the house is occupied.

Construction of a 50 x 90 ft. recreation room will begin immediately. The room will be completely sound-proof and will include dance hall, small

stage for bands, and a basement bar, to be used for fraternity parties. Billiard and ping-pong tables may be set up at will. The roof of the recreation room will also serve as a sun deck.

Pi Kappa Phi will hold an Open House party during the first week of the semester.

## Need Help?

INFORMATION

BOOTH

IN LOBBY

DURING

REGISTRATION

WEEK

## Newly Purchased Crescent Hall To Serve as Women's Dorm For University of Tampa Girls

Of interest to the academic community, here at the University of Tampa, was the recent announcement by University officials of the purchase of the Crescent Hotel for use as a dormitory.

This building will house all women students. Work men are busy preparing "Crescent Hall" for its new residents, approximately 190 girls.

There are five floors in the building. The first floor includes the dining room, two lodges, a T.V. room and Committee Room.

The individual rooms, are completely air-conditioned, have carpets, and private baths. Two new house mothers have been hired for Crescent Hall. Their suites will be located on the first and third floors.

Self-operated elevators will be in full operation for the students' convenience.



Tampa University's new women's dormitory, Crescent Hall, will house approximately 190 students.

### CESAR'S SHOE SHOP

- Work by Skilled Craftsmen
- Finest Materials Used
- Genuine Leather Soles

510-B Grand Central Ave.

Tampa, Fla.

## NEBRASKA PRINTING COMPANY

Commercial, Social and Publications  
Offset and Letterpress Printers

Charles Cuervo, Sr. and Charles Cuervo, Jr.

PHONE 2-2423

2104 NEBRASKA AVENUE

TAMPA, FLORIDA

### NOTICE

School Postoffice

Located in

**Ray's Variety Store**

Use Our  
Laundry & Cleaning  
Service

412 W. Lafayette St.

When You Arrive in  
Tampa Visit

**Charm Beauty Salon**

Specializing in All Lines  
of Beauty Work

FOR APPOINTMENT  
PHONE 86-7151

117 Hyde Park Ave.  
Down the Street from T.U.

### FALTER'S

"YOUR" PERSONAL  
INVITATION

To Visit Our

Women's Wear Shop  
Dresses - Blouses - Sportswear

434 W. Lafayette St.  
Opposite Crescent Hall  
Phone 8-6512

### Theta Chi

#### CAR RAFFLE

To Be Held Saturday,  
SEPTEMBER 30

at the

#### SCRIPT DANCE

Following the  
the  
Western Carolina  
Football Game

Tickets will be  
on sale at school  
by all Theta Chis

### Simon's Studio

- Portraits
- Weddings
- Commercial Photography

4602 Florida Ave.

Phone 35-5031

Res. WE 4-0868

## THE 3D'S TO FASTER PHONING

Dialtone — wait  
for the tone!

Double check  
your number!

Dial carefully!

GENERAL TELEPHONE  
America's Largest Independent Telephone System

• TROPHIES • ENGRAVINGS • SCHOOL CHARMS  
**HEART JEWELRY CO.**  
440 W. LAFAYETTE STREET  
Opposite Crescent Hall

Hey Men! — If You Wear Pants — See Us  
**THE PANTS SHOP**  
Fine Quality Seconds Direct from Factory  
Latest Styles and Patterns at Prices You Will Like  
801-B GRAND CENTRAL AVENUE

**PIONEER**  
Cleaners & Laundry  
Tailoring & Alterations  
For Men and Women

510 Grand Central  
Around the Corner from  
Crescent Hall  
Phone 85-8642

**Davis Barber Shop**  
803 Grand Central  
We Specialize  
in  
FLAT TOPS  
and  
HAIR STYLING  
—4 BARBERS—

Interested in any phase of Journalism?  
(Writing, broadcasting, art, etc.)

☐ MINARET  
School Paper

☐ MOROCCAN  
Annual

☐ WTUN  
School FM Station

Name \_\_\_\_\_

High School or College \_\_\_\_\_

Experience (not necessary) \_\_\_\_\_

Major at U. T. \_\_\_\_\_

MINARET  
UNIVERSITY OF TAMPA  
PLANT PARK  
Tampa, Florida



# Huerta's Outlook on Coming Season Optimistic

## RETURN OF LETTERMEN, TRANSFERS, WILL STRENGTHEN THE SPARTANS

by MARCELINO HUERTA  
Head Football Coach

"We are of age. We have size, pretty good speed, experience, and real good team spirit. We are going to give somebody a lot of trouble."

These are some of the quotes heard most frequently around Lykes Hall, the cafeteria, athletic offices, or anywhere a University of Tampa Griddier can have a say about this coming fall.

All our Gridders are anxiously awaiting to encounter their first opponent. The aches, pains, and sufferings of the past two seasons are not easily forgotten! Especially if you are made up of the material that these young men are. They are eager to prove to the athletic world that they are fine athletes (football players) and only needed to mature and gain a little experience.

This same feeling of team pride, confidence, and desire to prove is also held by the Spartan Coaching Staff — starting with the Head Coach and covering the managers.

The ball club is sound. The staff has evaluated the squad from all angles and we feel the squad is pretty sound. There is still a lot of work to be done but the balance, depth, and qualities of a good football team are here.

Let's take a look at the ball club. Ends — I believe this position and center are the two strongest positions. It is definitely the strongest we have ever been at end since I've been coaching. There are four or five ends that could be starters and we wouldn't weaken our club — the other three are real fine athletes, too. The moving of Charles Rose from fullback to end was a real good move and the addition of Jim Galmin makes this position the strongest. Our captain is Charles Bailey, a three-year letterman! There are six lettermen at end. Our tackles last year were freshmen and sophomores — they are now sophomores and juniors with quite a bit of experience — they acquired it the hard way — which is the best way. We made one of the best finds this spring when we got Don Scott. His addition makes this position very formidable. Don should

be drafted by the pros, even though he still has two years of eligibility left. Lettermen returning are: Juniors, Max Davis (his greatest day was against Ala. U.) and Bob Banks (two years letterman), Sophomores, Blaine Turner (a starter at guard last year) and Mark Beaubien (who played a lot the latter part of the season). Bob Watts had a good spring and Alan Wood was a spring addition that will be counted upon to help.

At guards, we have five lettermen plus Sophomore Ron Brett and Gene Rowell, who had a broken leg last fall but had a real good spring. The lettermen are Juniors, Bill Croft (2 letters, a real tough boy), Hollis Curling (2 letters), Joe Arasim (2 letters) and Nelson Guggino (1 letter). Jim Neve, injured last fall will be welcomed back.

Centers — this position makes us feel very secure. There are very few schools that have the depth and talent we have here. The two alternate captains are Junior Paul Gore and Sophomore Tony Yelovich — two of the finest. We also have Bill Gudalis who lettered as a sophomore at Tenn. U. and a prep school addition by the name of Ed Owens who will play at lot of ball. These four men will handle the center position capably!

The backfield will have more offensive potential than we've had the last couple of years. At quarterback there are two year lettermen Ron Perez and Sophomore Vaden Bessent battling it out for the starting assignment. Pushing them will be Sophomore Bill Osler, and two new additions, Wayne Owen and Andy Machek. We feel that in this group there is one that will move our Spartans. Ronnie will be a junior. More mature Vaden had a great spring and has a lot of confidence. Our passing will definitely be better.

Our halfbacks will be minus Charles McCullers and Buddy Williams but Dick O'Brien looks like he will be the outside threat we need. Ernest Stout had a fine spring and should have a great year. Boys that had a fine spring were

Bill Boyd and David Mitchell and newcomer Jim Caldwell will give added depth.

Our fullback situation looks real good with the conversion of Bob Moore to fullback. This big boy took the change like a duck takes to water. His size gives him the power for short yardage and his speed (fastest in squad) makes him a threat to go all the way any time he carries. Besides Moore there is "Big Sam" Rodriguez who did a good job this spring. Sophomore Frank Scerbo and newcomer John Siretto gives this position depth, too.

This is the way it looks to me but actually this ball club is not as experienced and mature as it can be. The squad is predominately composed of sophomores and juniors. There is still plenty of room for more experience, but their tremendous pride and confidence in themselves will outweigh what they might lack.

I believe very strongly that in order to be a Champion — you must be able to sacrifice both physically and mentally and in order to be able to do this, you must have Pride, Desire, and Self-discipline and I know this bunch of young athletes have these qualities!

### Gridders Practice In Early Morning

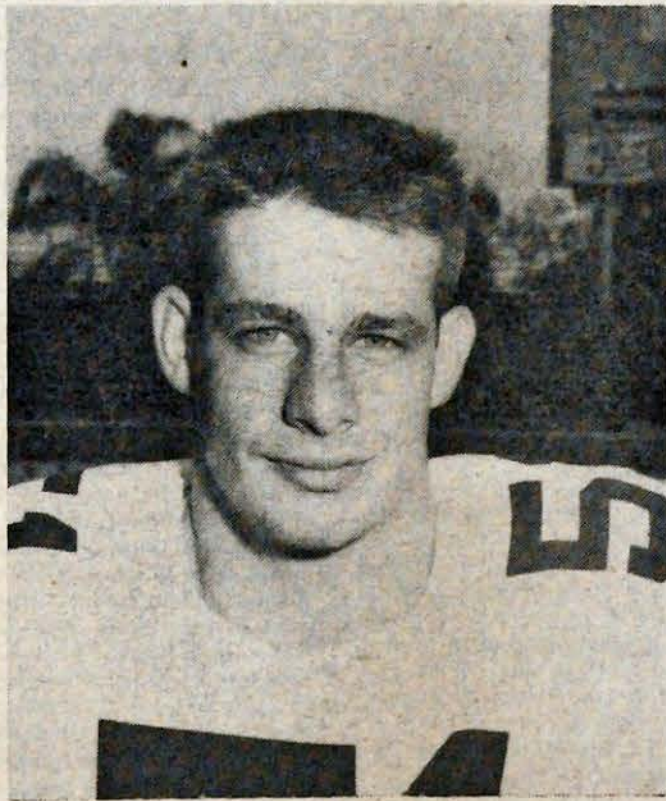
Clouds of dust rise early in the morning from Plant Field. Located in the rear of the University of Tampa, this field has been the scene of early and hard workouts for the 1961 Spartan Football squad. Practice sessions have also been held in the afternoons.

Highlighting the fall practice these past few weeks were: the return of Ron Perez, Tampa's only veteran quarterback; the defensive prowess of end Jesse Lane of Orlando and Gary Hobbs, a hard hitting halfback from Miami; the pass catching of team captain Charles Bailey, a senior end and defensive halfback; the passing of quarterback Buddy Owens of Key West, the added strength from transfer students Jim Galmin, University of Iowa end and Fred Scott, University of North Carolina tackle.

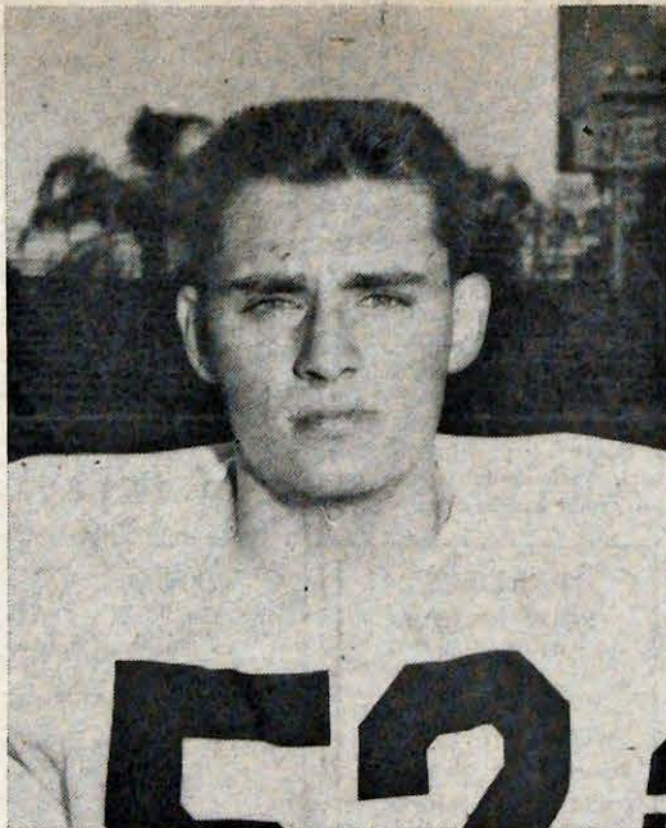
The Spartans, who had a 2-7-1 record last year, open the season at home September 23 against Livingston State College from Alabama.



Charles Bailey — Captain



Paul Gore — Co-Captain



Tony Yelovich — Co-Captain

## University Intramural Program Underway, Program Announced

by AL FRANKEL  
Minaret Associate Editor

On the playing fields, physical fitness may make the difference between victory and defeat. In life, too, the man or woman in top physical condition has a priceless advantage. Accordingly, the University of Tampa recognizes that as one physically fit athlete may influence the outcome of a contest, so may some 2,000 student influence the world in which they live.

Tampa U.'s traditional goal of training men and women physically as well as intellectually requires an athletic program which can meet the varied sports interests and abilities of its entire student body.

The more skilled athlete may participate on varsity teams in four sports: football, basketball, baseball, and crew.

The intramural sports program involves students from dormitory, fraternity, inter-class, town, and independent groups. Here, over twenty regularly established sports offer a chance for the average student to find supervised, competitive exercise. Students not participating in any organized sport must report for regularly scheduled physical education classes and those with physical limitations are given corrective exercises. All students must be acquainted with physical fitness before graduation.

A former lineman for the New York Giants, Robert Lovely, is director of men's intramurals. Assisting the ex-Spartan warrior is Nelson Butler, the student director. Activities for the men's intramural program includes fencing, horse shoes, touch football, handball, volleyball, bait casting, archery, basketball, wrestling, table tennis, foul shooting, badminton, softball, tennis, track, golf, bowling and swimming.

Miss Alice Rodriguez, assistant professor of Physical Education, heads the women's division.

The women's program includes such sports as volleyball, tennis, archery, basketball, bowling, table tennis, foul shooting, softball, track, golf, swimming, and badminton.

In addition to the Women's Intramural Program the Department of Physical Education

for Women sponsors intercollegiate teams in basketball, softball and tennis. All interested parties may contact the Director.

The planning, equipping, and supervision of these combined programs comprise an obligation which the University of Tampa gladly accepts, confident that the interest of our city, county, state, and nation will be best served by a well-balanced graduate, equal to the responsibilities of his society.

### MEN'S INTRAMURAL PROGRAM

October—Fencing, Horseshoes  
November—Handball, Volleyball  
December—Bait Casting, Archery  
January—Basketball  
February—Wrestling, Table Tennis

March—Foul Shooting, Badminton, Softball, Tennis  
April—Track, Golf  
May—Bowling, Swimming

### WOMEN'S INTRAMURAL PROGRAM

October—Volleyball  
November—Tennis, Archery  
December—Basketball, Bowling  
January—Table Tennis  
February—Foul Shooting  
March—Softball  
April—Track, Golf  
May—Swimming, Badminton

# IVY

With A  
Southern  
Accent

Kirby's Caters  
to Collegians



See These Specials Before You Buy!  
Greatest selection of button-down collar tapered-waist shirts (including Manhattan) in Tampa. Back-to-school specials — long and short sleeves from \$3.90.

Greatest selection of plain-front, Ivy-styled trousers in Tampa. Back-to-school special — Haggard slacks at \$8.95.

**Kirby's**  
MEN'S WEAR

1728 SOUTH DALE MABRY  
TAMPA 9, FLORIDA



**PERSONALIZED SERVICE**  
See how you benefit from this special feature of Kirby's! Discover how we fit your suits and slacks — and even taper your shirts — just the way you like them.  
Open Monday & Friday Nights

### 1961 Tampa U. Football Schedule

|          |                             |               |
|----------|-----------------------------|---------------|
| Sept. 23 | Livingston State College    | Home          |
| Sept. 30 | Western Carolina            | Home          |
| Oct. 7   | Open                        |               |
| Oct. 14  | Elon College                | Home          |
| Oct. 21  | Presbyterian College        | Clinton, S.C. |
| Oct. 28  | Southeastern Louisiana Col. | Home          |
| Nov. 4   | Troy State College          | Troy, Ala.    |
| *Nov. 11 | Northern Michigan           | Home          |
| Nov. 18  | Appalachian State College   | Home          |
| Nov. 25  | Wofford College             | Home          |

\* Homecoming

All Home Games Played at Phillips Field in Tampa and Begin at 8:15 P.M.

FOLLOW  
THE  
SPARTANS

OAK PARK

PAUL GREENE  
Watchmaker  
115 Hyde Park Ave.  
Down the Street from T.U.

RESIDENTIAL & INDUSTRIAL  
WIRING

Electrical Repairs  
ONE TRIP SERVICE TRUCK  
— Free Estimates —

QUINBY ELECTRIC

210 Franklin Street Phone 2-2772

**NAYLOR'S**

CHICKEN BASKET & STEAK HOUSE

"We're proud of our past T.U. friends and are looking forward to making new ones"

• VISIT US OR CALL FOR DORM DELIVERY •  
Two New Service Trucks For Your Convenience

909 Grand Central Ave.

Phones: 8-1990 - 8-8592



PARENTS!

Would you like to keep up with campus activities?

Please return this completed blank for subscription to the Minaret, campus newspaper.

Name \_\_\_\_\_

Home address \_\_\_\_\_

City and State \_\_\_\_\_

Enclose \$2.00 check or money order for a year's subscription and send to Minaret, University of Tampa, Plant Park, Tampa, Fla.