



NEWS *and* VIEWS

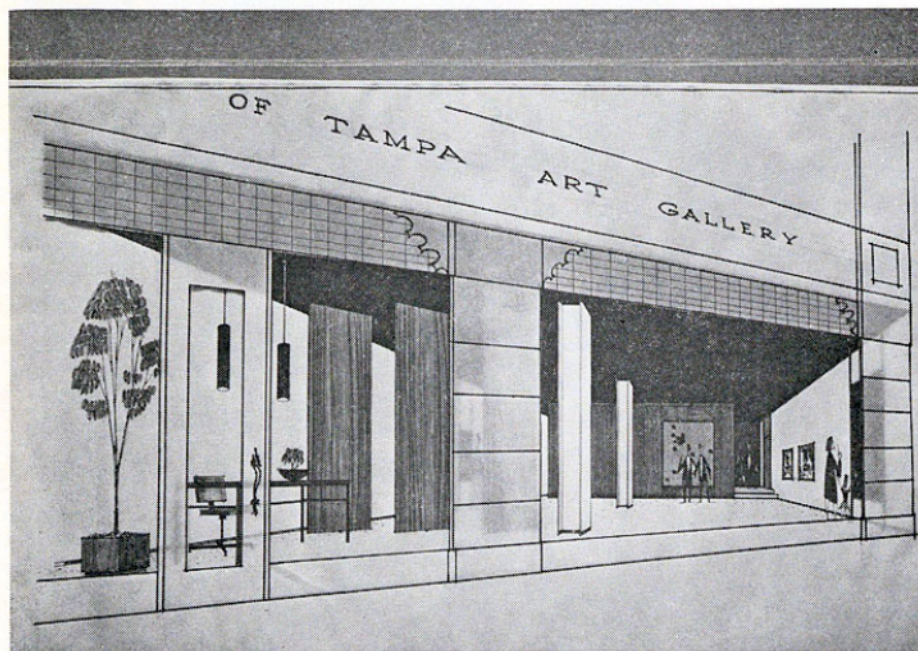
OF THE UNIVERSITY OF TAMPA

VOL. 4 — NO. 4

TAMPA, FLORIDA

DECEMBER, 1962

HERY CHRISTMAS TO FURVON!



Art Gallery Is Planned By University

Will Be Located
Next To Falk Theatre

Plans are under way for a University of Tampa art gallery to be located adjacent to the Falk Memorial Theater—a facility which is greatly needed by the university and which would benefit the entire Tampa Bay area.

As conceived by Wallace F. Green, new chairman of the university's department of art, the modern and functional theater gallery would serve as the site of traveling exhibitions and those from the Tampa Bay area, as well as the university's own art exhibitions. It will be located in a vacant store building in the Falk Theater building, just east of the lobby.

At present the university has no adequate art exhibition facilities, and the gallery will be very important to the development of the university's art program.

Eventually, Mr. Green hopes that printmaking and ceramics workshops can be held in conjunction with the gallery, which would service not only Florida but the whole Southeastern area.

Mark Hampton, prominent Tampa architect, is in charge of plans for remodeling and decoration of the gallery building, which will include, in addition to the exhibition space, a small kitchenette, work room, and storage space. Entrances are planned to the gallery from both the theater and Lafayette street.

Before the art gallery can become a reality, however, extensive remodeling of the space must take place. According to Mr. Green, some \$5,000 to \$8,000 will be necessary for the renovation work. Although the university has some building materials on hand, still needed are a lighting system, air-conditioning system, serviceable flooring, a set of double glass doors, colored burlap for three rotatable panels, and large quantities of sheet rock.

Persons interested in the proposed art gallery are invited to contact President Delo or Mr. Green.

This is the architect's rendering of the proposed University of Tampa art gallery, to be located adjacent to the Falk Memorial Theater.

University to Get More Land

Plans have been announced to make additional land available to the University of Tampa through the expansion of the Florida State Fair grounds and relocation of the Tampa Tourist Center, both of which lie adjacent to the campus.

The announcement was made in a news story which appeared in "The Tampa Tribune" on Nov. 24. It reported long-range plans disclosed in the Tampa mayor's office for a \$20 million expansion of the State Fair in connection with construction of a proposed railroad-vehicle viaduct downtown.

Involved in the university's expansion are exhibition halls and the livestock buildings and show arena in that portion of the fairgrounds bounded by a northward extension of Brevard street, Cass street and the Hillsborough River. The present site of these facilities will presumably become campus area when new exhibition halls and a new arena are built to the west of the present fairgrounds property.

The fair's planning is to make the

fairground area a vast civic, cultural, recreational, sports and entertainment center. The university, seen as benefiting from joint use of some of the center's facilities, would bound the expanded fair site on the east.

In addition, removal of the baseball diamond from the infield of the grandstand area at the fairgrounds would make possible additional parking area year-round for the university's student body and faculty.

The Tampa Tourist Center in Plant Park is to be "phased out" of its present location to make way for University and state fair expansion, it also was announced. The moving of the center to another location is now in the planning stage.

The additional space which would be made available under this plan is vitally needed by the university, which is in the midst of an expansion program necessitated by the transition from a commuting to a residential institution, with a preponderance of students from out-of-state.

Planning Program For UT Growth Is Initiated

When the \$600,000 Student Center is completed in March of 1963, it will be the capstone of a University building and acquisition program which has assumed dramatic proportions over the last three years.

The minaret-topped main building, which for almost three decades was the only center of academic and social life of the college, is now the heart of a complex of buildings which testify to the dynamic growth and progress of Tampa's oldest educational institution.

With the burgeoning of the university as a primarily resident institution, the need for increased dormitory space was in the vanguard of construction plans. McKay and Smiley residence halls for men were completed in 1959, followed in 1960 by the acquisition of the Puritan Hotel, now Lykes Hall for men. In 1961 the university purchased the Crescent Hotel, a luxury residential hotel, which was renamed George B. Howell Hall for women in memory of the late Mr. Howell, a founder and trustee of the university who died in the fall of 1961.

This year the Park Theater became the property of the university through an initial gift of \$35,000 from the Falk-Mandel Charity Foundation, which met the down-payment. It has been named the David A. Falk Memorial Theater in memory of the late Mr. Falk, long-time prominent Tampa resident and a former member of the university's board of trustees. It is rapidly becoming one of the major cultural centers of the Tampa area.

1962 also has seen the construction of additional wings on McKay and Smiley halls. Modern and centrally air-conditioned, these wings house 166 men. Also completed this year was the new industrial arts building which was dedicated at Homecoming Oct. 20.

More land is the crying need of the rapidly-growing University of Tampa. More space for recreational and intramural activities as well as a science building and library are in the plans for the future. The city of Tampa is undergoing one of the greatest expansions in the country, and the university is planning to grow right with it.

Hence, using the self-study completed recently for the 10-year evaluation visit of the Southern Association, the Board of Trustees has authorized a 5-year projective study to begin at once.

This study will involve trustees, administration, faculty and special consultant services. It will include careful projective estimates of land, buildings, equipment, faculty, staff and services estimated to be necessary for a program of high quality over the next five years.

This will be used as a basis for a long-range funding program to insure adequate financial resources for the University's future.

... And A
Happy New Year



Harris Standard Paint Co. of Tampa, a division of the Rapid American Corp. of New York, has made a \$5,000 grant to the University of Tampa on behalf of the Rapid American Scholarship Fund. Making the check presentation recently to Dr. David M. DeLo, president of the university, second from left, was John E. Harris, Jr., far left, chairman of the board of Harris Standard Paint Co. Beaming approval on behalf of the student body was coed Lillian Dootson, as M. J. Catena, president of Harris Standard, looks on. The \$5,000 will be used in amounts of \$1,000 annually to provide scholarships for University of Tampa students.

High Academic Level Maintained

By Willis J. Dunn
Director of Admissions

Students entering the University of Tampa for the past six years have achieved standardized entrance test scores that compared with the national average of college freshmen. During the last three years while we have been shifting from a predominantly local constituency to a student body derived from some 35 states outside of Florida, there has been no decline in the academic standard of our entering students.

As a means of alerting students whose high school record indicates they may have difficulty in college work, we have accepted such students on probation, limiting their class load to 12 semester hours. The wisdom of this practice has been indicated by the fact that 80% of those so accepted have earned sufficiently high grades to be removed from probation.

Increasingly, the applicants to the University are ranking in the upper half of their class, and we accept each year a number of students who are accelerated, being granted a high school diploma by their high school after they successfully complete their first semester here. Usually these are honor students, who raise the scholastic level of the classes in which they enroll.

We anticipate a limited number of openings at the end of the fall semester. Especially we are anxious to increase our enrollment of young women, as we have additional space in the women's residence hall.

Aid Offered In Estate Planning

The University of Tampa has received many generous gifts from alumni and other friends of the University. Any person making a bequest to the University of Tampa must consider how the gift will affect his own and his family's financial position. Careful planning of gifts to education may substantially better one's financial situation, plus benefiting the University of Tampa and providing for one's family in the future.

Careful studies of tax and probate records indicate that few estates are well planned. As a result, thousands of dollars are lost that could be used by the family and the University of Tampa. This circumstance can be attributed to failure to keep an estate plan up to date to fit revisions in tax and other laws.

The University of Tampa gift and estate planning program will offer an important service in helping alumni and others with their estate planning. Detailed information on estate planning is available from the Office of University Development. President DeLo and Dr. Speronis will be very happy to work personally with anyone interested in advancing the growth of the University of Tampa. (S.L.S.)

Theater Artists Series
Presents
The National Players
Feb. 21, 1963

Curriculum Changes Made

By Charles R. Walker, Jr.,
Acting Dean of Administration

The Office of the Dean of Administration has begun a revision of certain aspects of the academic program as a result of the University's change from a commuter to a residential college. It also is part of a complete analysis of the University's functioning begun through preparation of the self-evaluation report for the Southern Association and to be included as part of a five-year projective study now in the planning stage.

During the fall semester these efforts have been concentrated in two areas: the schedule and the catalog offerings. Beginning in February, 1963, the schedule will no longer have the free period at 11 a.m. on Tuesday and Thursday. Classes will be scheduled during this period, and convocations will be held at various class times during the semester. Required courses will be scheduled throughout the day instead of being limited in general to the morning hours,

and a gradual shifting of a portion of the upper division courses to the afternoon hours will be initiated. These changes should relieve the pressure for classroom space and diminish the number of schedule conflicts.

In an attempt to lower instructional costs, which are directly related to our large number of small classes, the catalog offerings are being reduced. The theory behind this is that if courses are listed in the catalog, they will be scheduled, and small classes will result in many instances. Certain departments offer twice the number of courses required for a major, and some of these courses are in highly specialized fields which are beyond the scope of the University's objectives.

A course is removed from the catalog only after conferences between the dean and the department chairman and upon concurrence of the Curriculum Committee. In all cases, great care is taken to assure that the effectiveness of the educational program will be maintained.



The University was the recipient in October of a check for \$12,800 from the Scholarship Night held at the Tampa Greyhound Track. Shown making the check presentation to President Delo, second from left, is E. A. Rouleau, right, general manager of the track. Looking on are John Hater, far left, assistant track manager, and Sam Bailey, athletic director at the university. The annual affair produced the largest student aid donation in the history of the event. For the first time also, the Tampa Quarterback Club held a special racing party which included a buffet supper in the clubhouse preceding the races.

President and Mrs. Delo's daughter, Ginny, was seriously burned early in November but is now off the critical list at Tampa General Hospital, where she is a patient. She is making slow progress but is expected to leave the hospital before Christmas.

President and Mrs. Delo wish to thank all those who have been so solicitous and thoughtful, to extend appreciation for the remembrances, gifts and flowers during Ginny's recuperation, and to express their gratitude to the many students and the dormitory and fraternity groups who contributed blood for Ginny when it was desperately needed. They also wish to thank all those who have offered other assistance.

Scholarships Are Vital to Program

By Stephen L. Speronis,
Director,

Office of University Development

No university can grow properly unless it has the necessary scholarship funds through which it can assist excellent students who lack all the financial resources to meet college expenses. Many students of great ability and promise are refused admission each year because the needed scholarship funds are lacking.

Individuals or groups wishing to establish scholarship programs at the University of Tampa may decide to select any of the following:

1. **Endowed scholarships** involve the donation of a sum of money or securities, the interest from which will be used to assist a worthy student. The principal sum remains intact, so that the scholarship remains in perpetuity. It may be named for the donor or as a memorial to a person or institution.

2. **General scholarships** are given on an annual basis, whereby the capital sum is expended to assist needy and worthy students selected by the scholarship committee.

3. **Work scholarships** are set up by various corporations whereby the employer defrays the cost of tuition for his employee. The University of Tampa is at present cooperating with some 50 business firms in this type of work-study scholarship.

4. **Scholarship funds** enable a foundation or interested persons to contribute the nucleus of a fund and expand it by adding annual contributions, thereby making of this fund a multilateral endowed scholarship program. In this way, many students may be assisted.

5. **Designated scholarships** may be set up to assist students interested in specific departmental majors, such as business administration, history, chemistry, music, etc.

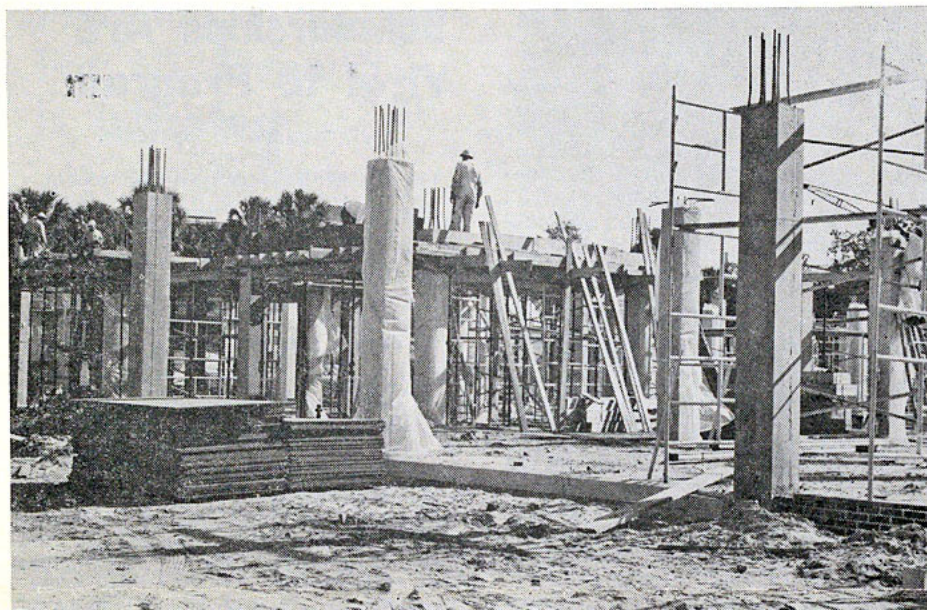
As a general suggestion, it will help the University and the students if the donor specifies whether or not the interest, the capital, or both are to be used in the granting of the scholarship.

Anyone interested in the university's annual scholarship program may contact the Office of University Development or President David M. Delo, who will be happy to assist in establishing this kind of scholarship. All scholarship contributions, small or large, are welcome.

Faculty Invited To Dinner Dance

President Delo and the University Women's Club will entertain members of the faculty and staff at a Christmas dinner dance to be held at 8 p.m. Dec. 21 in the university ballroom.

This event, at which members of the Women's Club will serve as hostesses, will take the place of the club's annual Christmas party. Mrs. E. O. Cook, president; Mrs. Frank Hutchins, corresponding secretary, and Mrs. Rufus Whitis, social chairman of the club, are assisting with arrangements.



Work is progressing rapidly on construction of the University's Student Center, which is expected to be completed in March, 1963.

Students Hear Noted Speakers

Outstanding speakers and other programs of interest to the students are presented at monthly convocations for the student body and faculty members in the Falk Memorial Theater.

Following the opening convocation on Sept. 25, at which President Delo spoke on "New Dogmas for New Times", the students next heard Philip B. Welch, noted Chicago architect, Oct. 24 in a dynamic lecture, "Silent Voices". To accompany his talk, Mr. Welch showed more than 500 colored slides carrying out the theme of his presentation, which was a review of world cultures and their impact on our way of life.

Dr. James Parrish, vice-president of Stetson University, DeLand, Fla., gave an inspirational talk entitled "Priorities in a Confused World" at a convocation on Nov. 19. Dr. Parrish is a well-known religious and civic leader.

A special Christmas convocation is scheduled for Dec. 20, when the univer-

sity's choruses and symphonic band will present a program of Christmas music.

Final event of the fall semester will take place Jan. 23, when Dr. William H. Kadel, president of Florida Presbyterian College, St. Petersburg, will be the featured speaker at a convocation honoring January graduates of the university.

Monthly convocations will continue during the spring semester.

Garden Circle Donates Plants

Contributing greatly to the attractiveness of the new wing on Smiley Hall for men are the lovely plantings around the building which are the gift of Rose Garden Circle, of which Mrs. Delo is a member.

The Circle is currently holding a series of informal parties to raise money for additional plantings. A coffee was held Dec. 13 at the Delo home.

Jimmy's Sod Company has generously donated sod which was placed around the new wing.

Famed Actress Delights Audience

The attractive and witty actress-author Cornelia Otis Skinner appeared in her original character sketches Nov. 12 at the Falk Theater before a capacity audience which received her enthusiastically.

As the second event in the university's 1962-63 Theater Artists Series, Miss Skinner's performance, aided only by a few simple costume changes and a table and chair for staging, was highly acclaimed by local critics. Her wit, dramatic ability and charm in the humorous and satirical sketches won her numerous ovations.

Other performers scheduled in the Theater Artists Series for the remainder of the season are The National Players of Washington, D. C., who will present Moliere's "School for Wives" Feb. 21, and Hal Holbrook, noted Broadway actor, who will give his famous characterization of Mark Twain on March 25.

Reservations for the events are handled through the box-office of the Falk Theater or by writing to the Drama Department, Theater Artists Series, University of Tampa. University students are admitted to the events free of charge upon presentation of identification cards.

Plans Made For "CAP Day"

Dr. Stephen L. Speronis, director of the Office of University Development, and Colby Armstrong, executive vice-president of the Merchants Association of Greater Tampa, are making plans for a second annual "Citizens for Academic Progress Day" to be held in January.

Purpose of the "CAP Day" will be to raise funds for development of the university. It will be similar to the first "CAP Day" held Jan. 15, 1962, under the sponsorship of the Greater Tampa Merchants Association. Nearly 100 Tampa stores contributed a share of their sales proceeds for that day to the university's Student Center fund.

Non-Profit Organization
POSTAGE PAID
TAMPA, FLA.
PERMIT NO. 27

DEC. 1962



NEWS and

VIEWS

OF THE UNIVERSITY OF TAMPA