

Hi Moms and Dads!
Welcome To UT!

Students Rally To Draft Kennedy

by Thomas Slaymaker
Campus News Editor

A *Students for Kennedy* rally was held last Friday afternoon in Plant Park. Approximately 150 interested students and faculty attended the rally and listened to speeches delivered by President of Student Council, Guy Euliano and Florida State Representative, George Sheldon.

Euliano welcomed the crowd and told them that their attendance indicated that students were not apathetic, as is frequently suggested. He mentioned the important influence

that students could have on the future of this country. Euliano stated that the Florida Democratic Caucus which was held on Saturday, October 13, was an opportunity for those unhappy with the Carter administration to express their disapproval by voting for delegates who supported Kennedy.

Local politician George Sheldon spoke next. He began his verbal barrage on the Carter administration: "President Carter is often talking about the malaise which encompasses the nation, but I question who is really suffering from mal-

aise." He noted the lack of confidence which the public has in its present leadership. Sheldon also described the frequent non-decisions which have been delivered by Carter, and also mentioned policy reversals which often follow statements made by the president.

Sheldon said that he decided to support the "Draft Kennedy" movement because of his interest in preserving the strength of the Democratic Party. He believes that the best prospect for the Democrats is for Carter to be defeated in the early primary elections so that he will quickly exit from the

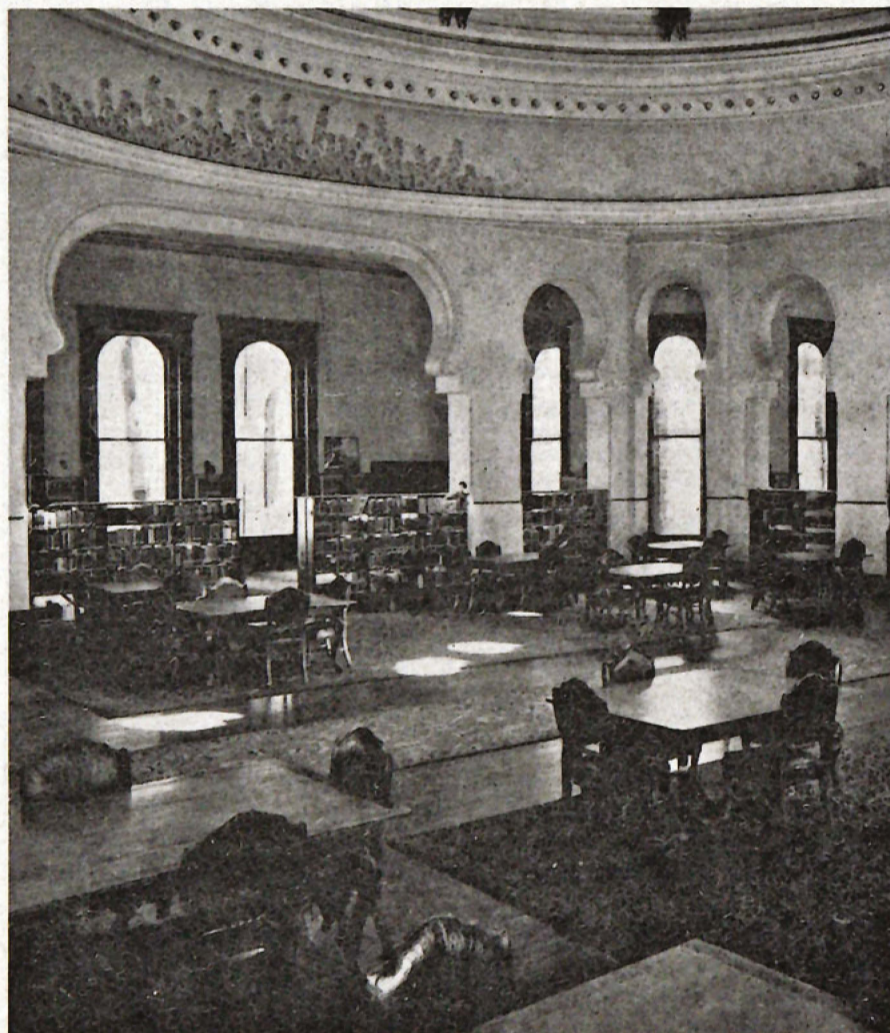
Presidential race, thereby allowing the more-qualified Kennedy to rally the party behind his leadership.

Sheldon, who has a very bright future in Florida politics, has been a friend of the UT community for a number of years. He attended this rally with the knowledge that most UT students would not be eligible to vote in the Caucus, since they are not residents of the state of Florida. "Providing the opportunity for students to be involved in the political process which will shape our future," was Sheldon's explanation for attending the rally.

Continued on Page 8

CELEBRATION! Library Traces Roots During Anniversary

by Laurie Noller, Minaret Staff Writer



UT's library, located in Fletcher Lounge, as it appeared in 1946.

October 19 marks the tenth anniversary of UT's Merl Kelce Library. To commemorate this event, a two-day booksale and a noon luncheon have been planned. However, although the Merl Kelce Library is only ten years old, the University of Tampa has had a library since 1933.

Two years after UT was founded as a junior college in 1931, a library was opened in the Plant Hall ballroom. With approximately 2,500 volumes, the library had a staff of one - Charlette Thompson.

The history of UT's library is almost a history of Thompson. Thompson was with the library for 43 years, and was director 36 of those years. She served under six of the college's seven presidents.

Thompson recalls the first library as "rather makeshift." Two fireplaces provided the heat, and the mahogany bookshelves were really coat and hat racks. A Florentine cabinet was situated between each window in the ballroom-library, and dining room tables served as reading tables. The chairs also came from the dining room.

"We didn't have any money to buy things," Thompson explained.

After a year in the ballroom, the library moved to what is presently Fletcher Lounge. At first, there were no tables or lights. Thompson said "nearby domes" provided all the light at night. Later, par-

chment shade table lamps were added. This library had no air-conditioning, but it did have oil heaters which Thompson said "took off some of the chill." The office and workspace were in what is now the kitchen. The balcony above Fletcher Lounge served as storage. In the center of the lounge there was a round carpet and a circular table.

During wartime, training corps on campus used the library for study. "They would do their drills around the building," Thompson recalled.

Various organizations made donations to the library, and it was gradually improved. More shelves were added, and in 1950 the library expanded into the corridor between the Post Office and Fletcher Lounge.

The library was "upgraded considerably" in the 60's. The carpet was replaced with what Thompson called "river tile," and along came fluorescent lamps.

The library remained situated in Fletcher Lounge until 1969. Thompson recalls the final years there.

"Everything grew," she remarked. "We were very crowded the last two or three years. It was very frustrating."

The new Merl Kelce Library, located on the site of the former

Continued on Page 9

UT News Briefs

Campus Interviews

October 23 - General Telephone of Florida - interested in Accounting, Business Management, and Finance majors, as well as MBA students. Position available: Accountant, Management Trainee, Communications Consultant. Salary Range: \$14,600 +

October 24 - John Hancock Insurance Co. - interested in all majors, particularly Marketing and Business majors. Positions available - Management Trainees in Marketing. Salary up to \$1,500 per month plus commissions and benefits.

October 25 - American Hospital Supply - interested in all majors in the Division of Business and Economics. Positions available: Sales, Operations, Accounting, Finances, Marketing, Distribution; salary range: Upper Quartile of Fortune 500 Corporation.

Notice All Students

This year the *Moroccan* (yearbook) will be sold to all students at a price of \$5.00 per copy.

A table will be in the University Union starting October 22nd for one week at which time you can purchase your copy, in advance.

The reason for the \$5.00 charge is because the budget given to the *Moroccan* for this year by Student Government is considerably less than last year. This charge is a necessity in order to publish a quality yearbook that will truly represent this academic year at the University of Tampa.

UT Poets To Read In Tarpon Springs

UT's Poet-in-Residence, J. Duane Locke, will be reading from his latest book, *Foam on Gulf Shore*, tomorrow, Friday, October 19 at 8 p.m. in Tarpon Springs. Howard Ibach and Lisa Phillips, two of Locke's students, will also be reading selections of their poetry.

The poetry reading, which is open to the public free of charge, will be highlighted by Debbie Schultz's interpretive dance of Locke's *Foam*.

Tarpon Spring's Recreation Department Building will be the location of the poetry reading. The address is 111 West Lime Street. For more information, contact Duane Locke, ext. 221, or call the Humanities office, ext. 442.

Inside

Personals..... Page 2

A Soph Touch..... Page 3

Tampa Prep News.. Page 4

Sororities..... Page 5

Greenpeace..... Page 6

Are Sororities Back? Page 7

Lady Spartans Sweep Page 11

Fall Celebration.... Page 12

EFFECTIVE LIVING

By Dr. Edwin J. Nolan, Director of Counseling

Test Anxiety

Have you ever been in a testing situation and become so nervous that you can't answer the questions, even the ones you know? You know the feeling - sweaty palms, stomach in knots, heart racing and pulse throbbing. This is what is commonly called test anxiety.

American society places much emphasis on assessing, measuring, evaluating, and testing our performances. This is especially true in the academic life of the college student. We have come to place great importance (often rightfully so) on performing well during periods of assessment and look upon ourselves negatively when we perform - or think we will perform - badly.

Because our thoughts greatly influence our emotions, having negative thoughts about one's worth as measured by a test will lead to negative emotions. Thus, we develop a self-fulfilling prophecy of failure, i.e., 1) we realize that we are being judged; 2) we place importance on doing well; 3) we fear that we may fail; 4) we become nervous over the possibility of failure and all it means; and 5) we make ourselves so nervous that we cannot perform well and eventually do poorly.

Research has indicated that a certain amount of anxiety is helpful in a test situation if it tends to "task-relevant behavior," that is, it summons our energies to master the task at hand. In other words, it helps us focus on the test. On the other hand, students who are highly test-anxious focus on themselves, emitting negative, self-centered responses to the inherent threat associated with the testing/evaluation situation. Such people develop feelings of inadequacy, helplessness, anticipate a loss of self-esteem or status, and strong desires to leave the testing situation. Anxiety

in this case becomes debilitating rather than helpful as it leads to "task-irrelevant behavior."

Test anxiety consists of two major components, the first of which is worry and the second emotionality. Worry is described as the cognitive concern about the consequences of failure, while emotionality refers to the physiological reactions to evaluative stress.

A variety of techniques have been employed to help college students cope with test anxiety. The most popular and effective is a form of relaxation training. First, students are trained to relax. Once this is mastered, they are encouraged to imagine progressively more anxiety-producing situations while relaxed. Eventually, they are able to carry this learning over to test situations.

Some of the latest research in this area indicates that testing the worry and emotionality components is insufficient. The belief now is that any treatment of test anxiety must be coupled with a program designed to improve study skill habits and attitudes.

If you find yourself in a state of "test anxiety" during tests and want to do something about it, stop by the Counseling Center in Plant 305 - we've got some ideas.

Next week: Behavioral Self-Management.

Pi Kappa Phi

The Hat Party Friday night was great. A super time was had by all. See ya in November!!

As you should know, Octoberfest is this weekend. Pi Kappa Phi will have a booth set up so that everyone can come to "throw a Pie at a Pi Kapp!" All are invited to partake and enjoy in this festive event. Al and Jeff will be on hand for assistance.

This past weekend all the brothers and pledges got together and painted a wall in front of the grandstands. Everybody did a great job! Thanks.

Congratulations to the winner of the two fifty-yard line Buc tickets. Denise Bennett won the jelly bean raffle with the guess of 1210. The actual amount was 1233.

Hey Jeff, did you happen to see where Wade scratched his initials in the Big Grey Motel?!

Aloha,
Mrs. Murphy



Greasing the threads on glue and nail polish bottles will keep them from getting stuck.

Career Placement Bulletin Available

by Norma Callagiron
Career Counselor

The first issue of what is expected to be a monthly publication was released last week by the Counseling Center's Office of Career and Life Planning Services. The **Career Placement Bulletin** contains announcements of placement opportunities and related items, i.e., monthly recruiting schedule, job openings, workshops, and the like.

The first complimentary issue was distributed to all seniors and faculty members via their campus P.O. Boxes. Interested graduate students and alumni may pick up a complimentary copy in room 305, Plant Hall. Future issues will only be available to students with active Placement Folders on file.

In order to activate a Placement Folder, go to 305 Plant Hall to obtain the necessary materials, including a Personal Data Sheet and Recommendation Forms. Type and return all information, along with a \$3 fee to cover cost of copying and postage. The items in your Placement Folder (PF) will be sent to any potential employer or graduate school you designate. You will also be eligible to sign up for on-campus interviews and to receive the monthly Career Placement Bulletin.

"Consistency is the last refuge of the unimaginative."
Oscar Wilde

Sororities Blooming On Campus

by Holly Fredericks

Last Thursday's Sorority Social was a big success! Approximately twenty girls were present showing a lot of interest and enthusiasm. We would like to extend our thanks to Arlene Shears, Vicki Ahrens, and Sue Helterbran who were speakers at the meeting.

For those of you who could not attend the Sorority Social, we would appreciate your stopping by Dave Jackson's office in the Student Union to fill in information cards. If you have any questions or would like

more information on sororities, see Dave.

Thursday, October 18 at 9 p.m., we will hold another social in Room 3 of the Student Union. Those of you who could not attend the last meeting are welcome to come, as well as any other interested girls. At this time, we will form groups and provide more information dealing with sororities.

We look forward to seeing you at the meeting!

Classified Ads

Easy Money

Wanted: Colorado Ski Rental Representative. Looking for enterprising individual to sell ski rentals in spare time on a commission basis to large on-campus groups. Write for details: Sport Stalker, Box 22353, Kansas City, Mo. 64113.

Paying \$10 Men's, \$5 Women's for Class Rings, Any Condition. Will arrange pick-up. Phone toll free 1-800-835-2246 Anytime.

ROOMS FOR RENT: Furnished, walking distance to UT. \$100 monthly, no lease. Call Robert Chester: days, 974-2146; evenings, 895-6551.

In memory of Jim Morrison, Janis Joplin, Jimi Hendrix, Duane Allman, Berry Oakley, Keith Moon, Brian Jones, and of course, Pigpen.

SMDMF,
The Knolls Boys

Jerry two step, teach me the steps, you lost me on that one.

pool shard and friends

Noelle, did you hear your bells go off this morning? Well not tomorrow!

Scary R.

Recovered yet?

NECAA

Island Girl,
Thanks for the great get away weekend at Little Gasparilla.

Shots

Blue Eyes,
You know me and I'd like to know you. Make your presence known.

K.J.

Where are the Buterbaughs of yesteryear?

The Phoenix

Lawrence - 'Brother Dear,' remember you promised to replace the rosewood pen you lost?!

To Maria - I love you, Phil.

John D. - You saved Rivershore Towers! Thanks, GT

Sister Mary Beth, I'm a beaver, you're a beaver. Or is it a hog? Dahf

Dear Miss Bunny,
I love you!

Yours truly,
Ziggy

You're right, Spud, nice game, really nice game!

Laughing Eyes,
Ralph misses you, and I love you. Perhaps we can arrange a merger in November, Ralph, you and I.
Love, your Braschle.

Bucko,
Brave stranger I know. I just never figured on such a *Final* scene. Your Buddy Remember,

Bertha

S.M.
Just thought I'd say hi, but with a mouth like mine it's safer to write. Hi!

Repulsive

THE NATURAL KITCHEN

\$1.00 OFF WITH EACH PURCHASE OVER \$3.50 WITH THIS COUPON

(One Coupon Per Check)
Expires 11/4/79 (Not valid on take-outs)



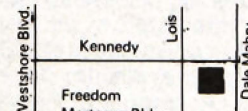
OPEN FOR LUNCH & DINNER

Mon.-Fri. 11:30 a.m.-9 p.m.
Sat. 12 noon-9 p.m.

10200 N. 30th Street
Tampa, FL
971-3107

Sat. 12 Noon-8:30 p.m.
Mon.-Fri. 11:30 a.m.-8:30 p.m.

4100 W. Kennedy Blvd.
Tampa, FL
870-1385



FREE PREGNANCY TESTING

ABORTIONS

Up thru 20 weeks

Licensed Gynecologist
Individual Counseling

251-0505

All Women's Health
Center of Tampa
1302 S. Dale Mabry



LETTERS TO THE EDITOR

Dear Editor:

AN ADDRESS TO THE BOARD OF TRUSTEES

Change is a continual fact of the universe. Humans, in some cases, can control change; shape it to meet their own and society's needs and wants. We can try and change something which already exists into something else that is supposedly better. Sometimes the change works; other times it backfires. Who determines whether to initiate a change or not? In this democratic nation of ours, we have been geared by the good will of our forefathers to select what path to follow by majority approval or disapproval. Our government is set up with an internal series of checks and balances that insures the populace no one person or body has total control of all decisions made in government.

The proponents of the Flexible Calendar Plan feel that a change to it from our present calendar is in the best interest of UT. Our university, however, also provides us with a system of checks and balances. In order to become a new school policy, the Flexible Calendar Plan has to pass through three voting bodies: the faculty, the Collegium, and the Board of Trustees. Let me recall for you the results of the first two voting bodies:

Faculty: 46-41 in favor of
Collegium: 11-10 in favor of

Having the final vote, you, the Board of Trustees, will decide the future of the Flexible Calendar; whether it becomes school policy or passes into limbo. Before you render a final verdict, let me point out to you a few facts and observations I have noted:

1) Regarding the faculty vote: eight votes, all in favor of the change, were from administrators and librarians. Therefore, a pure faculty vote would have been 41-38 against the new calendar.

2) Either way you look at it, the outcome of both votes, faculty and Collegium, were extremely close.

3) The Executive Council, fellow students whom we chose to represent our student body, voted 9-3 against the calendar change.

4) The General Assembly, made up of students who represent dormitories, clubs, and organizations, voted 36-17 against, with 8 abstentions.

5) There is a strong general feeling against the calendar that you can pick up from the students, this school's main asset, in the hallways, the elevators, and the cafeteria. To prove this statement true, I proceeded, on October 3, to knock on every door in Delo Hall, where I am a resident, and take a poll on the number of students who liked or disliked the new calendar. Out of the present 202 occupants of Delo Hall, 162 were found home. Here are the results:

In favor of new calendar	— 20
Against	— 111
No opinion	— 20
Don't understand	— 11
	— 162

President Cheshire told the members of the Collegium to "consider the larger long-term best interest of UT" that would result in the passing of the new calendar. First of all, it is not known for sure by Cheshire or anyone else that the new calendar will be in UT's best interest. Furthermore, the students here now are strongly against the change. I hope that before the Board of Trustees vote on the Flexible Calendar Plan, you take into consideration the items that have been brought to your attention in this address.

Thank you for your time,
Charles J. Kubinyi

A SOPH TOUCH

by Tony DeSormier, Minaret Sports Editor

It has finally happened!

It's that time of the year again that is the plight of the American housewife and the joy of the American male. If you time it right, you could watch a bit of NFL action, see the Major League World Series, watch Jabbar and Walton go back at it, and take in some hockey. Spice it up with a little NCAA competition, a tad of bowling, a divot or two of golf, and a tennis tournament, and you have the basis for all kinds of exciting confusion.

It's easy to get lost in a conversation on sports; just mention the word "Bird." You could mean the Baltimore variety in this year's World Series, the Boston species that may save the Celtic franchise, or the St. Louis family.

The St. Louis family is really interesting. Before you even start a conversation about them, you have to ask, "baseball or football?"

Or ask how the Bears are doing. Chicago? Again, you first have to qualify the question, "football or baseball?" Or it could ever refer to the Boston Bruins. (Yes, a bruin is a bear.) And, of course, Paul "Bear" Bryant, the football coach from Alabama.

Cities with more than one team in a single league can also cause trouble. I was watching a ball game recently (baseball, that is) and someone stopped and asked me: "How's Chicago doing?" I had to ask, "which league,

American or National?" The comedian replied "both."

It can be kind of fun after a while. I was watching a television in the lobby of Delo one night when the news came on. The scene was set. All kinds of self-proclaimed sports know-it-alls from all over the country, each with his (and her) own view of sports and sporting idols.

The highlights of the World Series were shown first. Debate #1 was ready to go.

"Ah, the Orioles s _ _ _ !"

"What the hell do you know?"

"A whole lot more than you!"

"Will you two shut up!"

"Who asked you?" said the first two in chorus.

Football was next.

"...in NCAA action today, the USC Trojans continued their winning ways..." intoned the television.

"USC won!"

"All right!"

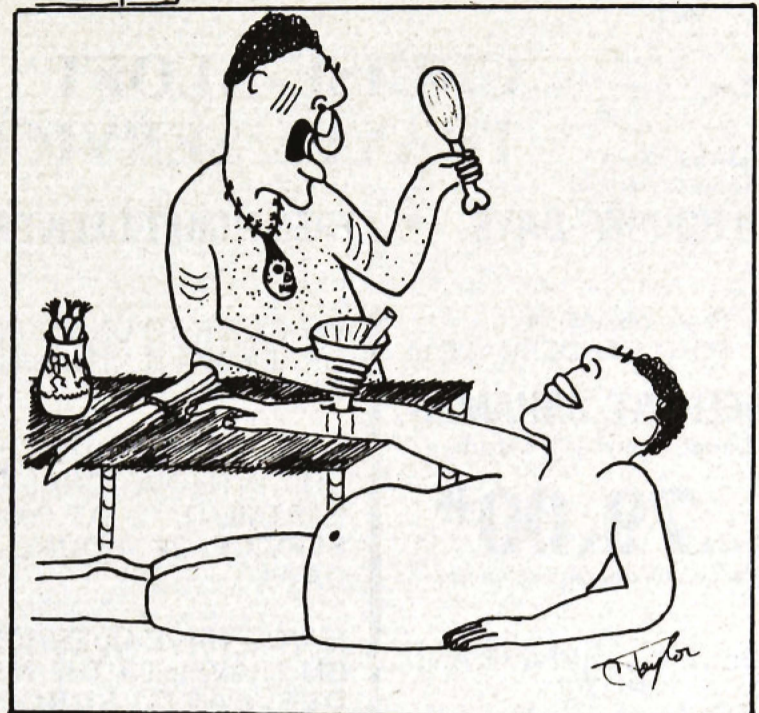
"OH NO!"

"What do you mean?" each demanded.

On and on and on.

I wonder when the ballet will be in town?

Murphy



"It's a new method I have developed for when you're sick and can't eat. I call it intravenous feeding."

ORR WHAT?

by Heather Orr, Minaret Staff Columnist

Cold Shoulders

Guess what? After attending this school for three glorious years, I've actually found it! It really wasn't that difficult; I've just never looked hard enough. I can honestly say, though, that it's not as bad as everyone thinks. I am, of course, referring to our campus library.

Many students feel threatened by the mere mention of the word *library*, but it really isn't all that foreboding. However, there is one major drawback; once inside you are likely to turn into a UT-sicle. That place is cold! The polar ice (not to mention the cobwebs) on the books is inches thick. My hand froze (ACHOO!) in mid-sentence while writing this article. I'm glad that the employees are armed with ice picks, or there would

be a number of new statutes decorating the aisles.

I suppose the refrigeration must help stimulate brain performance, because I now finish my assignments in record time. Writing, however, has become quite difficult because it is nearly impossible to write while my teeth chatter like wind-up dentures.

It is also a novel sight to observe students entering the library carrying more excess clothing than books - in *October*! Maybe the pseudo-winter atmosphere helps our northern students feel more at home. If this is true, should we inform the Admissions Office that UT now has facilities to accommodate a new freshmen enrollment of polar bears and penguins, or what?

The Peace Movement, Continued.

Peace is more than the absence of war. Help us turn America's priorities around.

☐ Tell me how I can get involved. Here's \$1 for my information packet.

Name			
Address			
City			
State	Zip	Phone ()	



COALITION
For a New Foreign and Military Policy

120 Maryland Ave., N.E., Washington D.C. 20002

Minaret — Fall, 1979

Editor-in-Chief	Howard F. Ibach
Managing Editor	Margaret McNiff
Faculty Advisor	Dr. Andrew Solomon
Senior Copy Editor	Tim O'Connor
Layout Editors	Maria DeHostos and Connie May
Sports Editor	Tony DeSormier
Campus News Editor	Tom Slaymaker
Features Editor	Brad Black
Business Advertising	Scott Clarkson
Secretary	Gail Tucker
Circulation Manager	Dean Broder
Photo Editor	Tim O'Connor
Photographers	Jerry Thomsen, Mike Baker, Mark A. Denonis, Lisa Pianka, Brad Black, Joe Wolf
Staff Writers	Dean Broder, Mike Baker, Laurie Noller, Mark A. Debonis, Tom Ferri, Jerry Thomsen, Alex Job, Rich Vidal, Lisa Pianka, Sean Ferrell, Jay Strappe, Chris Jolly, Heather Orr, Andy Pappas, Sandra Archey, Sharon Waldron, Tampa Prep Correspondent, Vicki Stewart

The Minaret considers articles from all interested persons. All material submitted must be typed and have the writer's name and box number on each page. A Style Book is available in The Minaret office. Deadline is Friday at noon.

The Minaret is printed by The Free Press Publishing Company, Inc.

The Minaret

Box 2757

Extension 335



There is one vending machine for every 53 Americans.



CRUISE-ALOFT TRAVEL SERVICE

24 HOURS/7 DAYS • FREE TICKET DELIVERY

From MIAMI or
FORT LAUDERDALE to
FREEPORT, BAHAMAS
3 Days(2 Nights daily departure

From **79.00***
Per person double occupancy

INCLUDING AIRFARE AND
HOTEL

*not including taxes and
gratuities

IT COSTS YOU NO MORE
TO LET A TRAVEL AGENT
HANDLE ALL YOUR TRAVEL
ARRANGEMENTS.

WE CATER TO UNIVERSITY
OF TAMPA'S STUDENTS
AND FACULTY.

FOREIGN STUDENTS:
OUR INTERNATIONAL DE-
PARTMENT IS AT YOUR
SERVICE 24 HOURS / 7
DAYS.

IF YOU HAVE QUESTIONS
ON TRAVEL TO THE MID-
DLE EAST, EUROPE,
SOUTH AMERICA, CALL
US ANYTIME.



253-2651



519 NORTH HOWARD AVE. (Across from Armory)



According to the AMA, a foundation cream applied under
make-up can help protect skin from being dried by
cold winds.

TAMPA PREP: A View From Both Sides

by Sondra Archey
Minaret Staff Writer

Recently, the University of Tampa and Tampa Preparatory School have come to an agreement which will benefit both institutions. The plan will facilitate cooperation and interaction between the two schools. Tampa Prep no longer will be just the leasee of some buildings on campus; it will become a more active member of the UT community.

The agreement has many focal points, but the part which will most directly benefit the students is the opportunity for UT students to observe, first hand, Tampa Prep classes. Education majors will be able to observe and to act as teachers' aides. This will be quite helpful, and a worthwhile preparation for internships in local schools. There are two distinct advantages to this: first, students won't have to enter internships "cold turkey," and second, Tampa Prep is located so close to UT that it will be convenient to go over whenever the intern has free time.

Other aspects of the agreement include the opportunities for faculty research, the mutual communication of staff needs, and the recruitment of new students for UT. All of these points should, in one way or another, benefit UT students. In the opinion of Dr. Cheshire, who is a member of the Board of Trustees for Tampa Prep, one of the major reasons for implementing this plan is for "the greater financial support." He feels that the cooperation between schools will "help the University of Tampa by enhancing the school's case for financial support from the community."

A birdseye view reveals this new agreement to be highly beneficial to both UT and Tampa Prep.

by Vicki Stewart
Tampa Prep Correspondent

There are probably many UT students who don't even know that Tampa Prep exists. If they are to find out about us and to realize that we are a productive part of the campus, and not just a "bunch of high-school kids," there must be some communication. And that communication must start now, because it has been put off long enough.

Though we are a small school of only two hundred and twelve students, tucked away in the corner of the University of Tampa campus, we are big in many ways. Tampa Prep is a school of high academic standing. In the past, several of our graduates have been accepted at some of the highest ranking colleges and universities in the nation. This year's senior class boasts five National Merit Student Semi-Finalists. No other high-school in Hillsborough County has as many.

We are under a new administration, one that is highly receptive to the idea that our two institutions develop a friendly relationship. Mr. Joe Wandke, headmaster, and Mrs. Susan Fernon, his assistant, are both very willing to help Tampa Prep and UT work well together. Hopefully, both the university and T.P. will make good use of this opportunity to cooperate and work as one.

Though we are proud of all our teams, our most award-winning team is Forensics, under the leadership of Mrs. Carolyn Lindley. It would be impossible to list all the awards that they have brought home to fill the trophy case at T.P.; they are constantly involved in one tournament or another. Also under the direction of Mrs. Lindley this semester is the Drama Production Class. Right now, they are preparing for the production of an 1890's melodrama-musical entitled, *Because Their Hearts Were Pure*. It will be presented in "dinner theater form" on the evenings of December 12, 13, 14, and 15. The Tampa Prep Parent's Club will be sponsoring the dinner.

We are willing to work toward forging a closer Tampa Prep-University of Tampa alliance. No longer will we be "that little high-school by the track," and you the "university next door."

Editor's Note: We are pleased to announce that Vicki is now a correspondent for the Minaret. She is the editor of Tampa Prep's *The Distant Drummer*.

Cook Speaks

by Alex Job
Minaret Staff Writer

With all the talk and articles that have been written concerning the new calendar and, with most students still not really understanding what the calendar is all about, we were fortunate to have Mr. Cook from the Admissions Office speak to us at our October 10th Student Council General Assembly Meeting. Mr. Cook has worked on a calendar similar to the proposed system and, therefore, talked about the calendar from personal experience. He would like to see interested students take part in recruiting new students when they go home for Christmas this year. It is students who are attending or who have previously attended UT who make the best impressions on prospective students.

All plans are set for that big event we have all been waiting for: OKTOBER-FEST!! The Juggernaut Jug Band will be providing entertainment, and there will be plenty of food and beer for everyone, so come out Saturday, October 20 and have a good time. Mike Lauder, Senior Representative, also has plans underway for a beach party tentatively scheduled for October 27. This is a party you surely don't want to miss.



There are easier ways to pay for college.

Conducting telethons, waiting tables or parking cars may not be the only ways to help you pay for college. There may be a scholarship or grant available that you've overlooked. Or it may be as simple as cutting back on expenses. Read the next issue of *Insider* and find out.

Ford hopes this next issue of *Insider* will give you a "better idea" for paying your way

through college. And if you need a set of wheels to get you around campus, check out the sporty Fords for the 80's.

Look for Insider— Ford's continuing series of College newspaper supplements.

FORD

FORD DIVISION



Myla And Brent Join UT Community

by Christing Jolly, Minaret Staff Writer

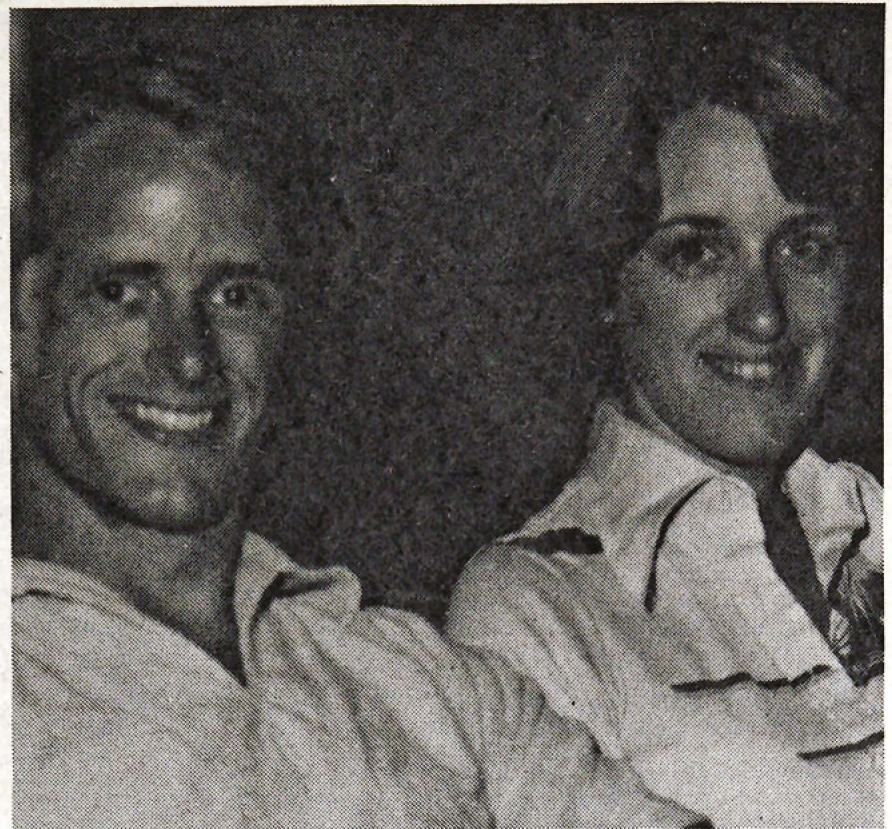
The University of Tampa is proud to welcome Brent and Myla Uppercue to the campus community. The young couple resides at Smiley Hall.

Myla was recently hired as the director of Smiley Hall. In addition to this time-consuming occupation, she is the program advisor for student activities. "I'm basically a resource person. I am available to students who need information on various UT functions."

Originally from Massachusetts, Myla attended Elizabethtown College in Pennsylvania, where she majored in

sociology and theatre. She received her Master's in Counseling at Shippensburg State in Pennsylvania. Brent also attended Elizabethtown College, while majoring in music education. He would like to conduct a choral group in the Tampa area.

Myla and Brent are extremely interested in theatre. Future plans for them include Myla performing on stage, with Brent providing musical accompaniment. However, they are perfectly satisfied with the life they are beginning at the University of Tampa.



Myla and Brent Uppercue have big plans for UT. Photo by Tim O'Connor

Sororities Make Appearance On UT Campus

by Christine Jolly, Minaret Staff Writer

The idea of sororities returning to the University of Tampa is quickly becoming a reality. A committee of interested students, led by Dave Jackson, Director of Student Activities, has been meeting regularly in an attempt to restore an old tradition at UT.

"The women on campus are once again ready for sororities," stated Dave Jackson, "the fact that 190 girls have expressed their interest proves the popularity is there."

Social sororities approached by the organizing committee are: Alpha Chi Omega, which was previously at UT; Alpha Epsilon Phi; Kappa Delta; and Gamma Delta. During the summer, Liz Lucas, a UT senior, wrote letters to many national sorority chapters asking if they were interested in UT as a future chapter. The positive responses led the committee to believe that sororities could, in fact, be part of the campus community. Of course, these girls were also aware of the time-consuming functions that were necessary to spread the news of sororities to everyone; they made that sacrifice.

The reason sororities no longer exist on campus is because their charters were either pulled, retired, or sus-

pended by the nationals. Sororities were withdrawn due to declining membership, poor undergraduate leadership; and inadequate alumni support. To compound these difficulties, women became more involved in "little sister" programs, the residence halls increased their programming, and the majority of the sorority leadership graduated.

Arleen Shearer, an alumni of Sigma Kappa Sorority at the University of Florida, is a member of this organizing committee. "We're anxious to start over with these girls. They are excited and realize the advantages of sororities. There is a definite learning experience involved, and there is room for every type of individual. A young woman discovers a closeness between her and her sisters, and this union makes her develop into a better individual," Shearer commented recently.

The primary advocate of the return of sororities has been the UT fraternities. Fraternities feel that the sororities will help to stimulate the social and intellectual activities of fraternities, and, therefore, increase the strength of the entire Greek system.

On October 11, interested women gathered in the University Union to learn about sororities. Arleen Shearer, who represented the organizing committee, explained, "The reasons we have asked you to come are: one, to relate to you what we (the committee) have done thus far; two, to develop a commitment to a particular sorority, three, to meet sorority women and to discover what being a sister means to them, and four, to meet each other."

A second meeting is planned for October 18 to discuss further details. All concerned women are welcome.

Sorority Social Held At UT

On October 11, 1979 the first Sorority Social was held on the University of Tampa campus since the Spring of 1977. The guest speaker was Mrs. Vicki Ahrens, President of Tampa City Panhellenic. City Panhellenic is an organization composed of all the active sorority alumnae in the Tampa area. Mrs. Ahrens discussed the cost, time commitment, rush and pledging procedures, and personal rewards of being a sorority member. She also addressed the different philanthropic projects sororities have selected around the country.

Also present was Mrs. Sue Scaglione Helterbran, an alumna of UT. Sue was selected as the Outstanding Female Graduate of her class and was president of her sorority, ZETA. Sue discussed activities on the UT campus when she was active in sorority life.

Arleen Shearer of the Counseling Center was the moderator. Mrs. Shearer told the audience of seventy women the status of colonizing sororities on the UT campus. The possibility of having a "Greek Building" in the present Administration Building on the fairgrounds was announced as having been proposed to Dr. Mendelsohn.

A second social hour is scheduled for Thursday, October 18, at 9 p.m. in Room 3 of the Union. Individuals who are interested in finding out more about sororities on campus are invited to attend.

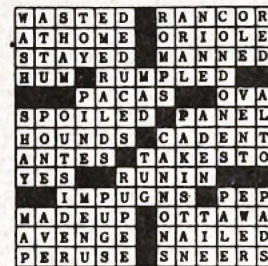
Monteith Performs Friday

From *The Tonight Show* to the *Mike Douglas* and *Merv Griffin* shows Kelly Monteith comes to the University of Tampa, Friday, October 19 at 8:30 p.m. in McKay Auditorium.

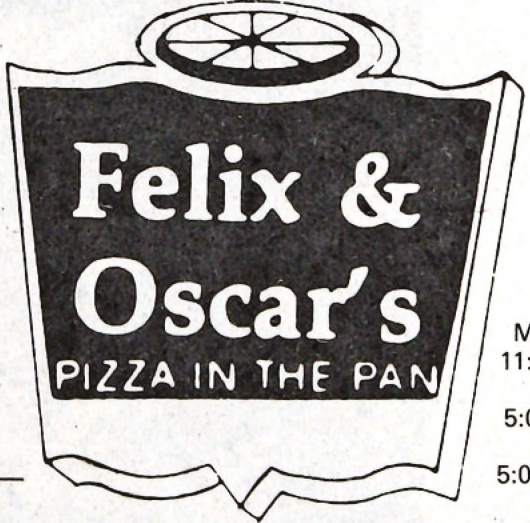
Kelly Monteith has toured colleges and universities across the country, filling auditoriums each time. His unique style of humor is directed toward the college student; you'll be guaranteed a night of laughter.

Starting the show will be Jack and Sally Jenkins. The Jenkins are alumni of the University of Tampa and have been touring the country for 18 years since their graduation in 1962.

Tickets are on sale at the Check Cashing window in the Union, and at the door the night of the show; prices are \$2.50 for students with ID, \$3.50 for parents and alumni, and \$4.50 for general admission.



Solution
To
Last
Week's
Puzzle



University of Tampa
Kennedy
Dale Mabry
Felix & Oscar's

Mon. - Thurs.
11:30 - Midnight
Fri. & Sat.
5:00 - 2:00 a.m.
Sun.
5:00 - 10:00 p.m.

236 N. Dale Mabry
Tel. 879-4219 (Delivery)

**DEEP DISH SICILIAN
STYLE PIZZA DELIVERED
STEAMING HOT TO YOUR DOOR**

Cheese	Canadian Bacon
Sausage	Black Olives
Mushrooms	Green Olives
Garlic	Pepperoni
Onion	Ground Beef
Green Pepper	Shrimp

Ask About Our Private Parties!

Greenpeace Fights A Leviathan Battle

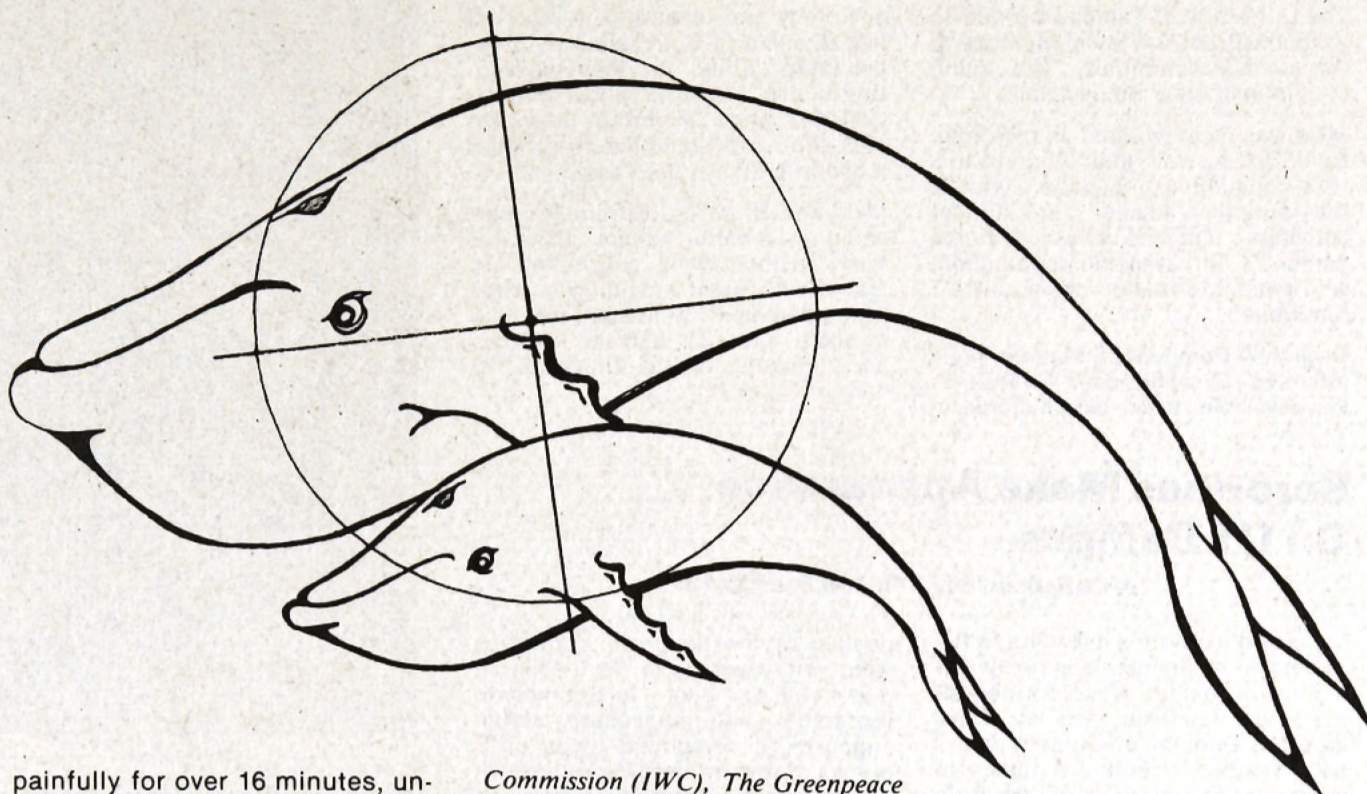
by Dean Broder
Minaret Staff Writer

On July 9, 1979, in the icy waters off the Icelandic coast, the international conservation group **Greenpeace** battled at sea for an endangered species of whales. **Greenpeace**, which was founded over a decade ago, has been protesting against whaling operations around the world.

Greenpeace leader David McTaggart, 47, and his crew, manned four outboard-powered inflatable boats in an attempt to stop an Icelandic whaling boat from harpooning a school of fin whales. Second in size (75 feet) to the mammoth blue whale, the fin whale is an endangered species everywhere in the world. The Icelanders are allowed to take several hundred each year.

Whenever a fin whale surfaced from the icy depths, the **Greenpeace** team would run parallel to the whale in an attempt to interfere with the aim of the harpooner. Whenever the whaler came close enough for a shot, one of the boats would speed into the line of fire. This stalemate continued for over 18 hours.

Finally, after several misses, the gunman managed to make a hit. In order to minimize the danger of killing the **Greenpeace** crew, the explosive head of the harpoon was removed. The whale suffered



Ralph P. Masiello

painfully for over 16 minutes, until an explosive harpoon blew the insides of the whale apart. "What we saw today was disgusting. The whale is a mammal. It makes love. It is warm-blooded. It has been here 40 million years longer than we have," stated McTaggart.

Each year thousands of whales are slaughtered, most of which are shipped to whale-consuming countries such as Japan and Russia. *The International Whaling*

Commission (IWC), *The Greenpeace Foundation*, and several other organizations, can only estimate the number of species still existing today. Some species, like the *Bowhead* and *Right* whales, now number less than three thousand, both threatened by extinction.

The Greenpeace Foundation needs the help of universities, high schools and ecology groups across the country. A petition will

be circulated around campus and then mailed to the U.S. Ambassador to Japan. Please sign your name and social security number. It is important that we try to stop this senseless destruction of the largest creature on earth.

Please help.

The Perfect Pet—No Leashes Required

by Lisa Pianka



Minaret Photo
by
Lisa Pianka

Laurie Standley and Cindi Bozciewitz never have to take their pets for a walk or worry if they're house broken. Both girls have to get their exercise in some other way than walking their pets, because even if they made leashes small enough, the walks would take all day.

Even the problem of house rules are avoided since their pets are perfectly legal. This perfect pet is the turtle, of course!

Laurie and Cindi, Smiley Hall residents, are convinced that their pets are ideal.

Not only are they easy to care for, but they can be held—turtles are tough little fellows. They're also inexpensive.

A ten or fifteen gallon tank with some colored gravel on the bottom and a rock or platform that reaches above the water is all you need to keep turtles happy.

If you want to get fancy you can buy a light to put over the top of the tank.

Feeding the turtles is no problem. The pond behind the cafeteria serves as a source of minnows which are

suitable turtle food. Once a day Cindi and/or Laurie can be found working the pond with a net.

After they catch the minnows, Laurie and Cindi run hot water over them, and put them in the turtle tank. On occasion, Cindi feeds her turtles leftover cafeteria food.

Inexpensive, playful and easy to care for, what more can you ask for? Need a friend, try a turtle?

FLORIDA MUSIC SERVICE

(formerly Buffalo Ave.)

We've moved to
3640 W. KENNEDY BLVD.

(Between Dale Mabry and Himes)

Larger quarters and
Ample Parking

Tel. 877-0435

Visit Us Soon!

\$5.00 Men's Hair Style (Reg. \$9.00)

with UT I.D.

CLIP

CLIP

Includes: Shampoo, Conditioner, Cut, Style & Blowdry

OCTOBER SPECIAL

Open Monday, Tuesday, Thursday, Friday 9-9
Saturday 9-4

REDKEN®



By Appointment Only

THE HAIR HUT

9104 N. Florida Ave., Phone 932-5908
Only a 12 minute ride from UT

Busch Blvd.

HAIR HUT

1-75

Florida Ave.

THE CHEESE SHOP

1906 S. DALE MABRY HWY.
LOCATED AT THE CARRIAGE PLAZA

300 Varieties of cheese from around the world . . .
Wide selection of imported and domestic wines

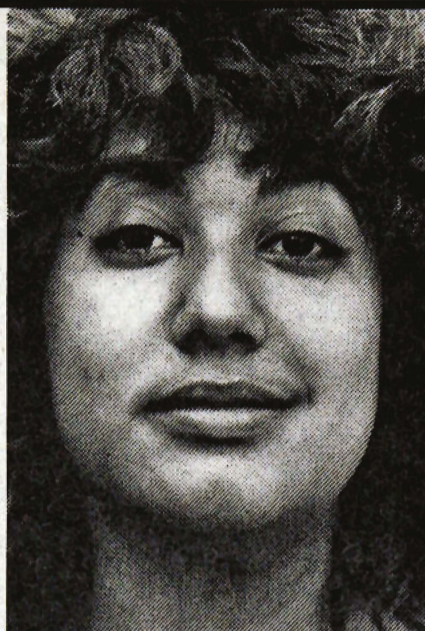
- Deli Sandwiches
- Fresh Homemade Salads Daily
- Quiche Lorraine Made Daily

10% discount on anything in stock with this ad

Phone 251-9258



Jennifer King, (freshman): "I think they're expensive."



Awilda Rivas, (junior): "They will bring leadership to the females at school."



Nick Derrico, (senior): "God bless them."

What Do You Think

Minaret Photography by Tim O'Connor



Dima Smirnoff, (alumnus): "I've had a deep feeling of resentment against them ever since they turned me down for membership."



Robin Denman, (freshman): "It doesn't really matter. I don't care about it."



Lucky Zebel, (senior): "I don't like them. I don't think sororities ever have a purpose besides socializing. They're not like academic sororities or fraternities which help students better their schoolwork. They don't have a purpose."

Of Sororities On Campus?

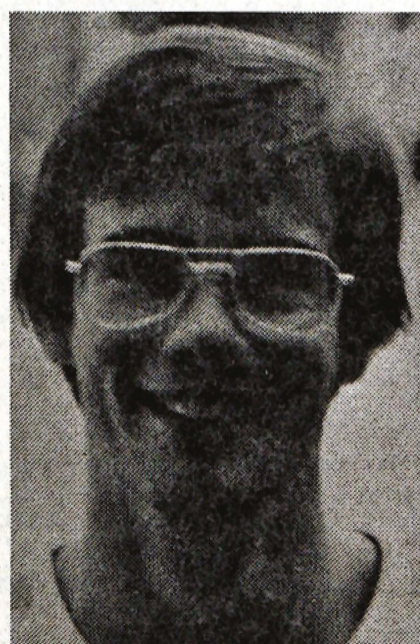
by Sondra Archey
Minaret Staff Writer



Shelley Havas, (sophomore): "I like them."



Dave Thomas, (crew coach): "They're great."



Tom Schoonmaker, (junior): "I think it's a great idea."

Dracula Comes To Falk Theatre

The Alice People Theatre Company is pleased to announce its 1979-80 season. The Company is now in residence at the University of Tampa's Falk Theatre located on Kennedy Blvd. across from the main campus. The 1000 seat facility with its rich and colorful history will be shared by the Alice People, the Tampa Ballet and several university performing arts groups.

The classic thriller *Dracula* came to life Monday, October 8 at 8 p.m. as part of the Artswatch celebration. The Production's official opening will be Friday, October 26 with performances thru November 3. Evening performances are scheduled for 8 p.m. with early curtains set for Sundays at 7 p.m. Matinees will be offered Saturday, October 27 and November 3 at 2 p.m. We will also have a very special Midnite performance Halloween nite October 31 which has become a tradition for the Company.

The season will offer a wide variety of drama, comedy and music, including the first presentation of a large scale musical when *Cabaret* is presented.

The season continues with *Alice* to be presented January 4 thru January 20. This adaptation of *Alice in Wonderland* was the initial production of the Alice People five years ago and was met with rave reviews from critics and audiences alike. Its success and the dedication of those involved resulted in the formation of the Company and a commitment to bringing a permanent resident company to Tampa.

Alice will be followed by *Room Service* February 22 thru March 9. This hilarious farce is best known as a classic Marx Brothers vehicle. The play was presented on Broadway and later the Marx Brothers film was produced.

March 14 through March 30 a World Premiere will be presented. The script will be an original work by a Florida playwright. Further details will be forthcoming.

Kennedy, continued from page 1

The Florida Caucus which was held last Saturday denied either politician a clear mandate. However, supporters of both candidates claimed victory. Kennedy's backers felt that his showing was a tremendous victory because he was battling an incumbent President with all of the advantages of that office. People still voted for Kennedy although he has not officially declared his candidacy for office.

Pro-Carter forces felt that Kennedy's failure to win a clear majority proved that his name alone would not insure a Kennedy victory. The media has conducted numerous polls which clearly show that a majority of Amer-



Greg Howell, of Alice People, stars as Dracula in the company's season opener.

icans would prefer Kennedy as president rather than Carter. Happily for Carter's candidacy, this preference was not demonstrated in the Florida voting.

Results of the vote in Hillsborough County, which include Tampa, were evidence of the effectiveness of the "Draft Kennedy" movement in this area. Kennedy won a clear mandate in Tampa with his support coming from the University of South Florida area and the Latin section of Ybor City. Early Hillsborough County estimates forecast Senator Kennedy winning 40 delegates and President Carter winning 5. State Senator Sheldon should be very pleased by the Kennedy showing in this county as it was largely the result of his active assistance.

Life would be much simpler if we didn't try to make people think we're what we're not.



The custom of throwing old shoes or tying them to the bridal car after the wedding dates back to ancient Egypt.

The final production of the season will be the Tony award winning musical *Cabaret*. *Cabaret* has won virtually every award in the theatrical world and world-wide acclaim. The Alice People are pleased to be able to present their first musical presentation as part of an effort to offer a truly diversified and exciting season.

The months of November and December will find the Company touring Elementary Schools with a Children's Theatre production. The tour will take the show to over 90 area schools. A special *Outreach* program is also to be implemented that will bring theatre to Halfway Houses, Senior Citizen Centers, Prisons and other facilities that otherwise might not have the opportunity to experience live theatre.

It is a period of growth and development for the Alice People and we look forward to welcoming many new patrons to our new home on the University of Tampa campus. We greatly appreciate the support and assistance of the university and look forward to a year of mutual growth and fulfillment.

Tickets for all Alice People productions will be \$5 with the exception of *Cabaret* which will be priced at \$6. Student and Senior Citizen discount tickets will be priced at \$3.50. Generous discounts will be offered for groups of 20 or more as well as special party nites for fundraising purposes. Season tickets are available for \$20 giving the patron a savings of over 20%. Subscribers will be given preferential seating and several artist and audience "get togethers" are planned.

Tickets will be available at the Tampa Theatre and at the Alice People office in the Falk Theatre from 12 noon to 5 p.m. daily. Reservations and Information: 223-8981 or 256-7911 (after October 9).

Come and skate for the health of it!

RENT-A-SKATE

237 E. Davis Blvd.
Davis Island, Tampa

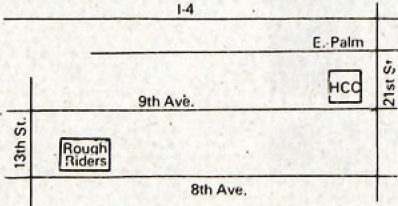
Tel. 251-0003

Outdoor Skate Rentals
and Sales

ADVERTISING
SALES PEOPLE NEEDED
FOR THE MINARET

All sales persons are paid
a commission.

Interested students should
apply in the Minaret office,
Room 4, University Union,
2nd floor, anytime.



- Monday Night Football Special. Big Screen TV, 3 Hot Dogs for \$1.50, Litre of Beer for \$1.50
- Tues. 1/2 Price Drinks with UT ID
- Wed. Wild Turkey Night
- Thurs. Ladies Night. 50¢ Bacardi Daiquiris. Live Entertainment
- Fri.-Sat. Live Entertainment

ROUGH RIDERS RESTAURANT
1901 13th Street
Tampa, Florida 33605

IN HISTORIC
YBOR SQUARE
813-248-2756

Oktoberfest, UT Style

by Lisa Pianka, Minaret Staff Writer

Dave Jackson, Director of Student Activities, and Jim Sobalvarro, Chairman of the Special Events Committee, agree that the combination of Parent's Weekend, Oktoberfest and Homecoming into one weekend has made planning hectic, but they, also agree that the weekend will be great.

Beginning with activities on Friday, festivities will reach their peak at noon on Saturday.

The Oktoberfest celebration is a UT tradition, open to all students. A student with an "A" or "B" meal plan

can participate in the Oktoberfest festivities for \$3.50. All other students will be charged \$6. Activities will include apple dunking and egg-throwing booths sponsored by on-campus organizations, slave labor auctioning by the Inter-fraternity Council, and the Juggernaut Jug Band, specializing in 1920's rock 'n' roll.

Along with beer, an Oktoberfest mug and frisbee will be provided for all students.

Oktoberfest will be an event you won't want to miss.



John Abendroth, saxophone and Jim Feist, flugal horn, take a break during the concert.

Minaret photo by Tim O'Connor

Stormbringer Rocks On Campus

by Carol Dixon

A new group of talented musicians has arrived on campus.

Jim Fyke, UT junior, Mike Malloy, a senior at Plant High School, and Mark Noto, UT sophomore, are members of **Stormbringer**. **Stormbringer** was formed during the Summer of 1979; Noto joined in August. Their repertoire is rock-oriented.

Fyke, a music-education major and lead guitarist in **Stormbringer**, has been a musician for thirteen years. His musical talent, including a wide variety of instruments, also includes fine vocals.

Malloy, the youngest member of the band, is an accomplished bassist with four years of experience.

Noto, a political-science and English major, is the drummer; his experience includes five years of hard playing.

Stormbringer played at the UT porch party, held at the beginning of the semester. The band played that night after a few short practices, but their appearance was warmly received. The rehearsals later became more time-consuming and intense.

The Q 105 Battle of The Bands was held on October 5 at Franklin Street Mall. The band swiped first place in this competition. On October 10, Suncoast Scene (Channel 44) hosted **Stormbringer** on their series as part of the first-place prize for winning Q 105 Battle of the Bands.

Stormbringer's future prospects appear positive. The band is in the process of negotiating with one of three agents and expects to be making appearances in the Tampa Bay area. The rockers are looking forward to the summer for the possibility of a small tour.

Library, continued from page 1

Tampa Tourist area, was dedicated on Sunday, October 19, 1969. The two-story building is reminiscent of some of the Moorish architectural characteristics of Plant Hall. The library has a capacity of 200,000 volumes and currently has 188,000. There are individual study rooms, two typing rooms, two classrooms, an audio-visual center, staff lounges, and a memorabilia room. The building is carpeted and air-conditioned throughout. The total cost of this library was \$1,327,533. Merl Kelce, after whom the library is named, was a co-recipient in 1961 of the prestigious Horatio Alger Award with President Dwight Eisenhower. Kence is currently a resident of Missouri, and is affiliated with the Sinclair Investment Company of St. Louis.

Now, ten years later, the new library is celebrating its anniversary. Mark Harris, author of "Bang the Drum Slowly" and "It Looked Like Forever" will be the speaker at a noon luncheon, October 19, in Fletcher Lounge. Tickets for the event are \$10, with all proceeds going to the library's book fund. Reservations may be made by contacting Lydia Acosta, library director, at 253-8861, ext. 385. A benefit book sale will also be held October 18-19 from 9 a.m. to 6 p.m. in the Plant Hall ballroom. Thousands of books will be on sale at bargain prices. These two events, sponsored by the Friends of the Library, will take the library back to its "roots"—the Plant Hall ballroom and Fletcher Lounge.



Bucky Pizzarelli, Jr. cooks on "Feel So Good."

Minaret Photo by Tim O'Connor

Jazz Ensemble Jams

by Dean Broder, Minaret Staff Writer

Artswatch festivities blossomed last Thursday afternoon as the University of Tampa's Division of Fine Arts presented a jazz ensemble in Plant Park.

The superb forty-five minute concert, conducted by Don Ziegel, was comprised of songs by such well-known jazz artists as Les Hooper, Horace Silver, Marvin Hamlisch, and Chuck Mangione.

The show opened with a short introduction, followed by Chuck Mangione's **Love The Feelin'**. Flugal horn was played by Jim Feist.

Next up was **Nobody Does It Better**, a Marvin Hamlisch tune from the James Bond film, **The Spy**

Who Loved Me. It was warmly received by the fairly small crowd. A popular Chuck Mangione hit, **Combo**, heightened the applause with an excellent trumpet solo by Jim Feist and a nice performance by guitarist John Pizzarelli.

The ensemble continued with Les Hooper's **Look What They've Done**. The concert's last ride was Horace Silver's **Sister Sadie**, featuring an excellent sax solo by Steve McLaughlin, and marvelous trumpet technique by Jim Feist.

Other ensemble members were: Rick Zeitler on vibraphone; Emmy Purcell and Michele Tappouni, trombones; on bass, Norman Ludwin; Scott Brown, John Abendroth, Hiroshi Orii and Chris Garcea with saxophones; Richard Mayer, drums; Art Yaroshefsky, Tim Neldner, Craig Strack and Mark Evans on trumpets, and at the piano, Tara Richards.



Even though new music is being written all the time, and musical styles undergo many changes, the desire of man to express himself in song dates back at least to prehistoric times. Whistles and flutes made from bones have been found in Hungary and Russia that are at least 25,000 years old.

The reason some people talk so much about themselves is that they know so little about anything else.

The
Perfect Point
Lifestyle Gifts

LIFE STYLE GIFTS FOR
THE HIGH SOCIETY
7806 N. ARMENIA AVE.
TAMPA, FLORIDA 33604
TELEPHONE 935-4914

Mention this ad and receive a 10% discount on anything in stock.

PARTY KEGS LOWEST PRICES 50 POUNDS OF ICE FREE WITH EACH KEG	INDEPENDENT ICE CO.			SAVE MONEY
	602 North Albany Tampa, Florida Tel. 253-6021			
Our Everyday Low Prices				SODA
	Keg	Case	6-Pack	
Budweiser.....	35.00	8.26	2.07	Pepsi Products \$.90
Busch.....	34.00	8.26	2.07	
Michelob.....	41.00	9.37	2.35	6 Types of Soda
Miller.....	35.00	8.17	2.07	
Miller Lite.....	35.00	8.55	2.16	
Old Milwaukee....	29.95	5.96	1.49	
Schlitz.....	33.00	7.40	1.85	

Spartans Mired In Slump

by Tony DeSormier
Minaret Sports Editor

Last week was a long week for the Spartans. They started the week at 4-0, ranked No. 15 in the south and ended the week at 4-2, probably knocking them out of the rankings.

Rollins College was the first team to spoil the perfect Spartan streak as they beat the Spartans at home, 3-1. Rollins started the scoring at 11:09 when Dave Arrendondo sent home the first goal. Rich Bergold knotted the score at 40:13. Rollins scored another goal before half time to take a 2-1 lead.

In the second half, Rollins fell back into a defensive posture, only moving the ball into Spartan territory occasionally. UT kept the pressure on, but couldn't capitalize. Rollins did capitalize, and Ed Berger topped the scoring for the day with a goal at 71:50 on a break away. Final score: 3-1.

It seemed a good opportunity for the Spartans to get back to their winning ways when the West Virginia University Mountaineers paid the fairgrounds a visit.

The Mountaineers played badly the day before, and were defeated by the University of South Florida, 4-0. But the Mountaineers played up to their reputation and caught the Spartans by surprise. The Spartans were kept in the game by the strong goal tending of freshman Craig "the Scarp" Scarpelli. It seemed as though the Spartans had started to excell, but by



(Left) WVU goalie Jon Capon makes misplay that could have been fatal. But WVU was able to recover and clear the ball away.
(Right) Mark "Moose" Putnam goes up for ball against WVU.

half time, the score remained 0-0.

In the second half, freshman Brian Keener was called for a foul in the penalty area, which resulted in a penalty kick for WVU's Henry Long. The penalty shot was good, and, at 50:48, the Mountaineers led, 1-0.

Less than five minutes later, a foul was called on the Mountaineers,



which resulted in a penalty kick for the Spartans. But WVU goalie Jon Capon came up with a spectacular save off of the foot of Peter Johansson. It didn't look good for the Spartans.

But Mike Fall hustled in on a weak chip back to the goalie. The ball was then chipped over the head of the goalie to send the game into overtime, 1-1.

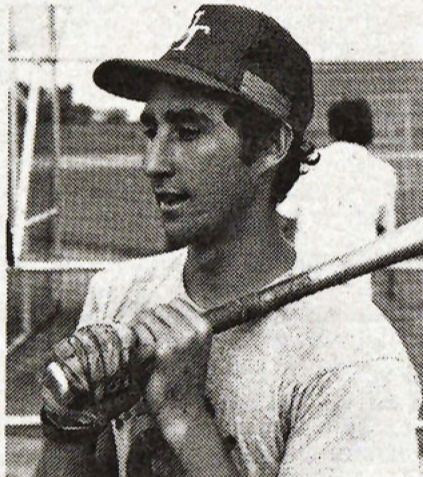
The Spartans played defensively in the first 10 minutes of the overtime, waiting to get the wind advantage in the second 10. It looked as though their strategy would work as the Spartans came up with a few good attempts.

But at 102:06, Sung Gul Cho sent a cross to Yong Kim to give the Mountaineers a 2-1 lead which they held onto, despite a late flurry by the Spartans.

After Tuesday's game against St. Leo, Alabama A&M, a national soccer power, makes its first visit ever to the Tampa fairgrounds on Friday, the 19th at 3:30. It promises to be a great game. Come out and join the Spartans.

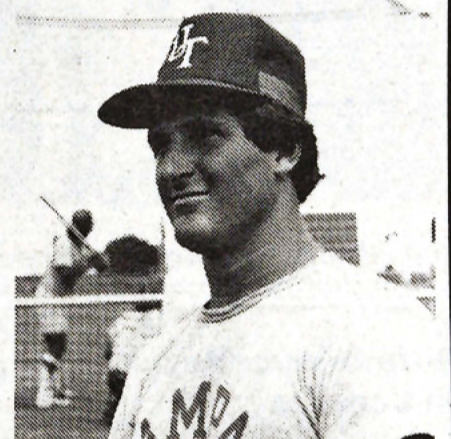
Minaret photos by Lisa Pianka

'79 - '80 UT Baseball Co-Captains



Senior Andy Faza (left) and Junior Frank Ramppen (right) have been chosen to be the UT Spartan baseball team co-captains for the '79-'80 season. Faza led the Spartan defense last year while Ramppen led all Spartan hitters with a .341 average.

Photos by M. David Tisdell



Winning Weekend For UT Women's Soccer Club

by Sharon Waldron, Minaret Staff Writer

A two-and-a-half hour drive to Gainesville on Saturday, and a game at Henry's Poultry Farm on Sunday wasn't enough to snuff out the Spartan spirit as the women's soccer club gained its first victory over the University of Florida in three seasons, and out-hustled the previously undefeated Silverstreaks in two pressure-filled games.

In the first fifteen minutes of Saturday's game it was obvious that UT had made a long trip in cramped quarters and UF picked up a quick goal to lead 1-0.

Colleen Podolsky was the first Spartan to come to life, and she woke up Nancy Byonpane with a pass that brought the UF goalie out of the net; Nancy slammed the ball into it.

The game remained tied until Podolsky hustled to snag a goal kick, banging it home.

UT led 2-1 at halftime.

In the second half, Rachel Strauss sent a pass up the line to Debbie Adams. Adams hustled the ball downfield, went one-on-one with the goalie, and tucked it away in the corner.

UT led 3-1 when a Spartan handball forced a penalty shot. The shot hit the goal-post and went out, but the referee charged UT's goalie with moving before the ball was kicked.

UF scored on the second penalty shot, narrowing UT's lead to 3-2 with ten minutes to play. Tension peaked,

with both teams struggling for the lead.

UT stuck it out to win 3-2.

On Sunday, cows lurking behind goal posts and sweet reminders of their presence floating in the air, UT stunned the Silverstreaks in Plant City, 3-1.

Winger Nancy Byonpane flew past two defenders, pounding a shot in the net to start the UT attack. A Silverstreak forward answered with a freak knee-high headball, making the halftime score 1-1.

Byonpane connected in the second half on a halfback pass to put UT back in the lead, 2-1.

Nancy then hooked a UT corner kick to Beth Flint, and Flint gave the Spartans an insurance goal on a picture-perfect header to make the final score 3-1.

UT fullback Debbie Hare deserves recognition for performing "above and beyond the call of duty." Three times the UT defender climbed a ladder into a pasture and battled a cow for possession of an out-of-bounds ball.

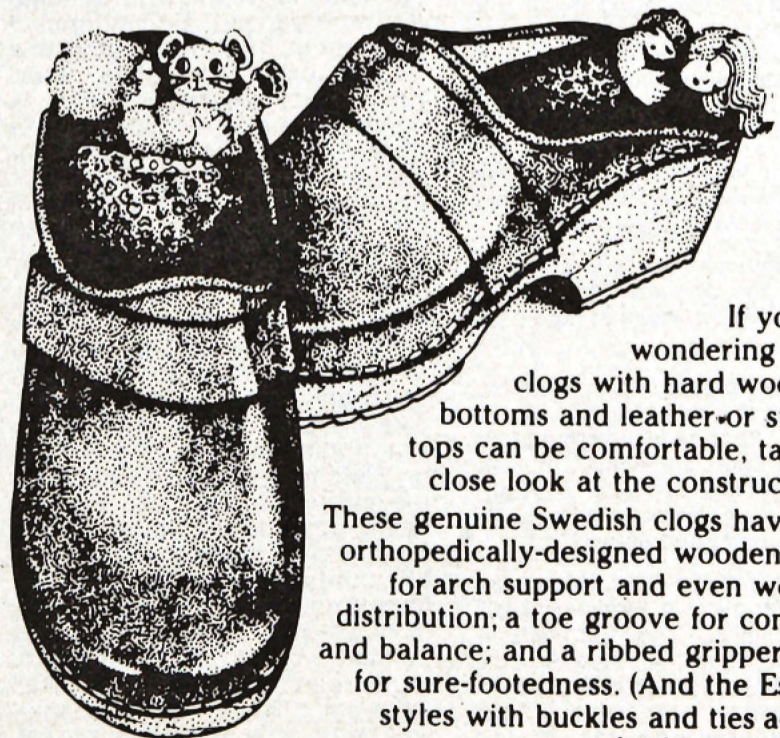
The next scheduled game is on Sunday, October 21, at 1 p.m. on the Spartan soccer field, against the Kixx. A victory over the Kixx could place UT high in the league standings.

Everyone is welcome to attend Sunday's game.



New white tennis shoes will stay new-looking longer if you spray them heavily with starch.

JUST A COUPLE OF SOFTIES



If you're wondering how clogs with hard wooden bottoms and leather or suede tops can be comfortable, take a close look at the construction. These genuine Swedish clogs have an orthopedically-designed wooden sole for arch support and even weight distribution; a toe groove for comfort and balance; and a ribbed gripper pad for sure-footedness. (And the Eskil's styles with buckles and ties adjust for high insteps.)

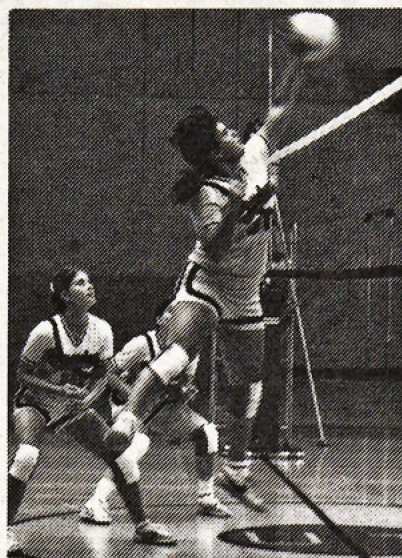
All this adds up to the most comfortable shoes you'll probably ever wear.

ESKIL'S
CLOG SHOPS



(Left) The Lady Spartan benches look on anxiously as (center) Terrell Italiano spikes a point home. Afterwards (right) Coach Anne Strusz had plenty to smile about.

Minaret photos by Joe Wolf



Lady Spartans Sweep

by Tony DeSormier, Minaret Sports Editor

She walked around nervously, chattering to anyone who would listen.

Coach Anne Strusz told her, "Just have a little confidence." She nodded and walked away.

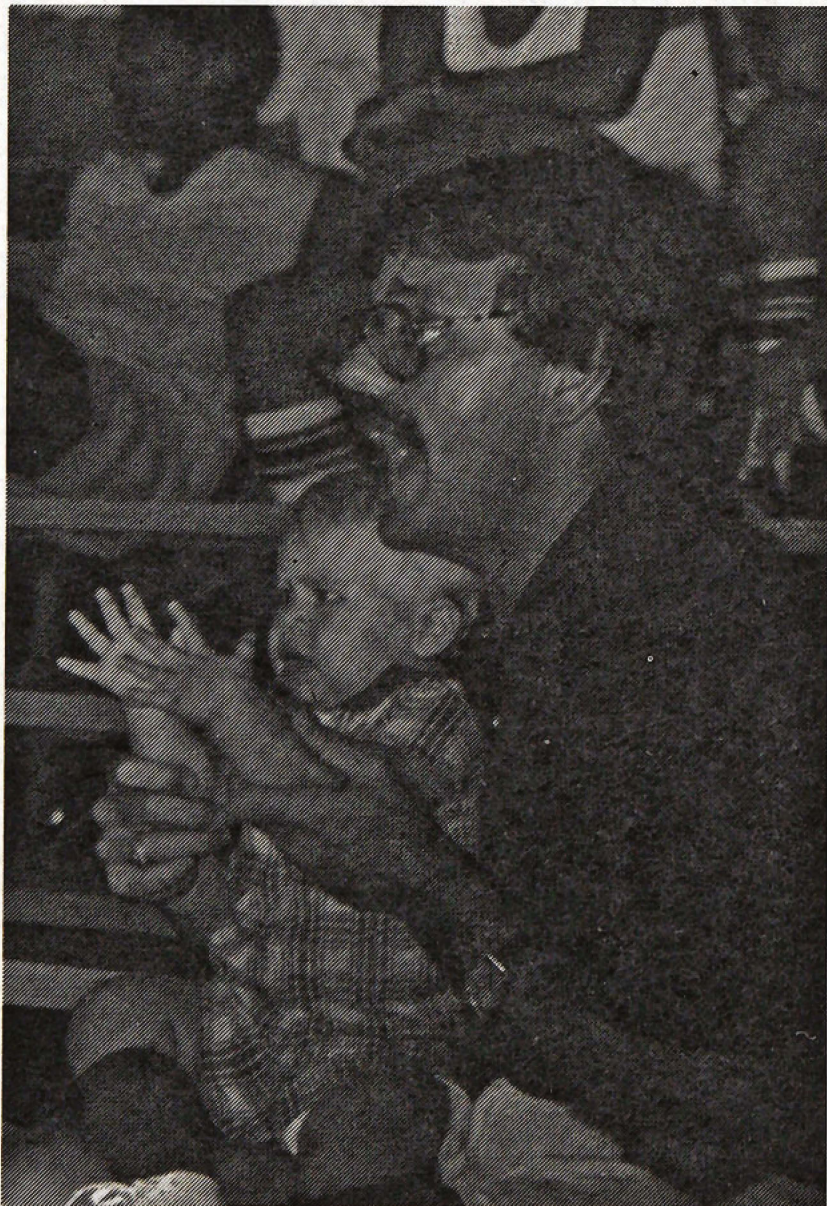
This "little phrase" is one of the oldest in sports rhetoric. And, like most "little phrases" in sports, it may backfire. Thankfully, this time it didn't. Terrell Italiano took Coach Strusz's advice and proceeded to play a strong game to help the Lady Spartans sweep last Tuesday's match against St. Leo College and Polk Community College.

The Lady Spartans started off the

night by taking on St. Leo's in the first match. Led by Italiano's floor play and Jane Castor's spiking, the Spartans tallied two victories, 15-7, 15-6. Shelly Ireland served the last five points in the second victory.

Polk Community College and St. Leo battled fiercely in the second match as the St. Leo Monarchs dished out some of the punishment that they had just received at the hands of the Lady Spartans, 15-8, 15-12.

The Lady Spartans ended the evening by taking Polk Community College in two games, coming from behind in the second, 15-10, 15-13.



Matt Birrenkott leads UT fans in cheering on the Lady Spartans along with the unidentified man in glasses.

Minaret photo by Joe Wolf

ENTRY BLANK 1st Annual Homecoming Run 5,000 Meters

Name _____

M or F

UT Box Number _____

Bring entry blank and \$1.00
to UT Athletic Dept., UU6

Starting time for the Homecoming Run is noon, Saturday, October 20. All runners should report to the fountain at 11:30 a.m.



STEAMED...



STEWED...



NUDE...

DJ's OYSTER BAR
SEAFOOD RESTAURANT

October is
University of Tampa
month at
D J's Oyster Bar

All UT students
receive 1st draft beer
free with I.D.

Corner of Gandy Boulevard
and S. Dale Mabry

Tel. 837-6252

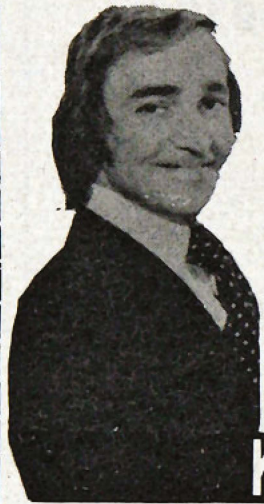
FALL CELEBRATION 79

KELLY MONTEITH

with Jack & Sally Jenkins

"...a super talent...without doubt the most personable and professional entertainer we have ever worked with."
Univ. of Southern Mississippi

"...packed 'em in and knocked 'em dead. His monologue is...tailored to a campus audience."
Wisconsin State Univ.



KELLY MONTEITH was born in St. Louis. Perhaps that's why the best way to describe KELLY's humor is: very similar to George Carlin, but with a midwestern slant. He started doing standup routines in high school and, upon graduation, he moved west to attend the famed Pasadena Playhouse College of Theatre Arts. His education there has helped KELLY in using movement and articulation that lends a great deal of professionalism to his act. After two years of school he started appearing at small clubs around Los Angeles and writing comedy. Soon he had moved to Las Vegas and was writing material for other comics (his first sale was to Phyllis Diller).

KELLY is now broadening his career doing colleges and universities across the country. 10-minute standing ovations, packed auditoriums and college students rolling in the aisles with laughter greet KELLY at campuses everywhere. His professional manner gained from years of "paying dues" and major club appearances, mixed with a different brand of humor than that used in Las Vegas, has resulted in unprecedented success on campus. KELLY loves the challenge of making the best-educated and hippest people in the world laugh at themselves through his words.

KELLY MONTEITH has appeared on the *Mike Douglas*, *Merv Griffin* and *Tonight* shows frequently. Johnny Carson thinks KELLY is the best young comic in the business. That's why he's on the Carson show more than any other comedian in recent memory. He also starred in his own CBS summer TV show a couple of seasons back. But KELLY's talent is just starting to mature and get recognized. Since KELLY is one of the nicest people you'll ever meet, people frequently recognize him — and he loves to talk. That's where he gets much of his material: watching people watch themselves.

KELLY MONTEITH has a face that is hard to forget and a sense of humor to match. That combination is making KELLY the brightest, funniest young star on the comedy horizon.

KELLY MONTEITH

JACK AND SALLY JENKINS ARE 1962 GRADUATES OF THE UNIVERSITY OF TAMPA. THEY HAVE BEEN PERFORMING PROFESSIONALLY FOR THE PAST 18 YEARS IN CLUBS, THEATRES, AND ON COLLEGE CAMPUSES. UT IS PROUD TO HAVE THEM RETURN AND PERFORM DURING FALL CELEBRATION.

TICKETS ARE ON SALE AT THE CHECK CASHING WINDOW IN THE UNION AND AT THE DOOR THE EVENING OF THE PERFORMANCE. STUDENT ID. REQUIRED.

Friday, Oct. 19 8:30
\$2.50 with UT ID.
McKay Aud.

SCHEDULE OF EVENTS

Friday, October 19

- 9 a.m. - 4 p.m. "Friends of the Library Booksale" Plant Hall
- 10 a.m. - Noon Students/Parents appointments with Faculty
- 3 p.m. Soccer - UT vs Alabama A & M - Plant Field
- 5:30 p.m. Happy Hour - Rathskeller
- 8:00 Tampa Ballet - Fall Performance - Falk
- 8:30 KELLY MONTEITH IN CONCERT with UT's own Jack and Sally Jenkins. McKay Auditorium. Student price is \$2.50 with I.D. Tickets can be purchased at the Check Cashing window or the night of the concert at the door.

Saturday, October 20

- 10:30 a.m. "The Future Twenty Years Ago" - Hilton Ballrooms A & B, An enlightening exchange about today as seen in 1959, with Professors, Alumni & Distinguished Guests.
- Noon 1st Annual UT Homecoming Run - 5,000 meters \$1.00 Entry fee to be paid in Athletic Office by October 17. Start and finish at the Soccer Field.
- Noon - 5 p.m. Parent/Student Crew Race - Boathouse
- OKTOBERFEST in Plant Park
- \$3.50 - with A & B meal plan → food, drink, mug, frisbee, fun.
- \$6.00 - without meal plan
- No charge - on meal plan and don't wish to participate.
- \$2.50 - food only - (without meal plan)
- \$3.50 - no meal → just to party
- food will be served from Noon - 2 p.m. Music by the Juggernaut Jug Band.

- 9 p.m. FALL CELEBRATION DANCE - Champagne for Everyone. Music in the Lobby of Plant Hall. Dancing on the Verandas. Dress is semi-formal. No admission charge.

Sunday, October 21

- 9:30 Catholic Mass, Room #3, University Union
- 10:30 Brunch - no charge with A or B meal plan.
- 11:30 a.m. Bus to Tampa Stadium - Pro-Football Action - Tampa Bay Buccaneers vs Green Bay Packers. If you don't have a ticket, watch in the Rathskeller at 1:00

Contact the Student Activities Office for further information.

OKTOBERFEST

Plant Hall Dance

* 20 oz. Mug

* Frisbee

* Food

* Fun

* IFC Auction

* Soda, Beer

Jug Huggers
Of The World Unite
and . . .
Hug A Jug With
The Juggernaut Jug Band



Noon to
5 p.m.

Food Will
Be Served
Noon to
2 p.m.

* Dance On The
Veranda

* Champagne In The
Ballroom

* Dress Is Semi-Formal

* No Admission Charge

\$3.50 With A or B Meal Plan

Saturday, 9:00 p.m.